

ELECTRICAL GROUP @ GMRT

Click to edit Master subtitle style

STEPS TAKEN FOR RFI MITIGATION

2/21/12

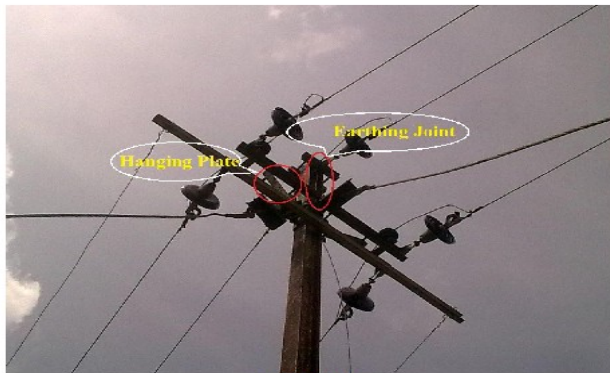


Fig.1:- RFI Source

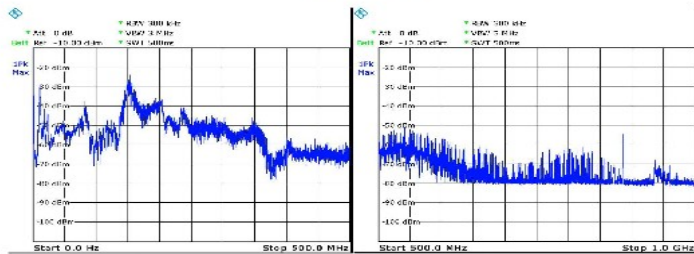
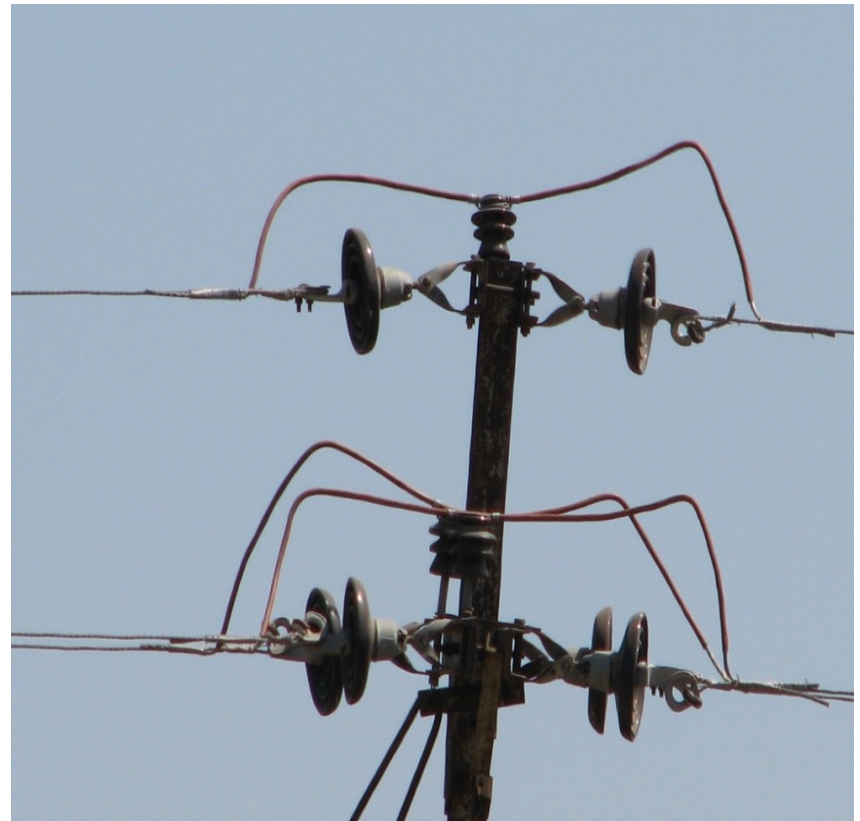


Fig.2:- 0-500MHz

Fig.3:- 500-1000MHz



BEFORE

AFTER

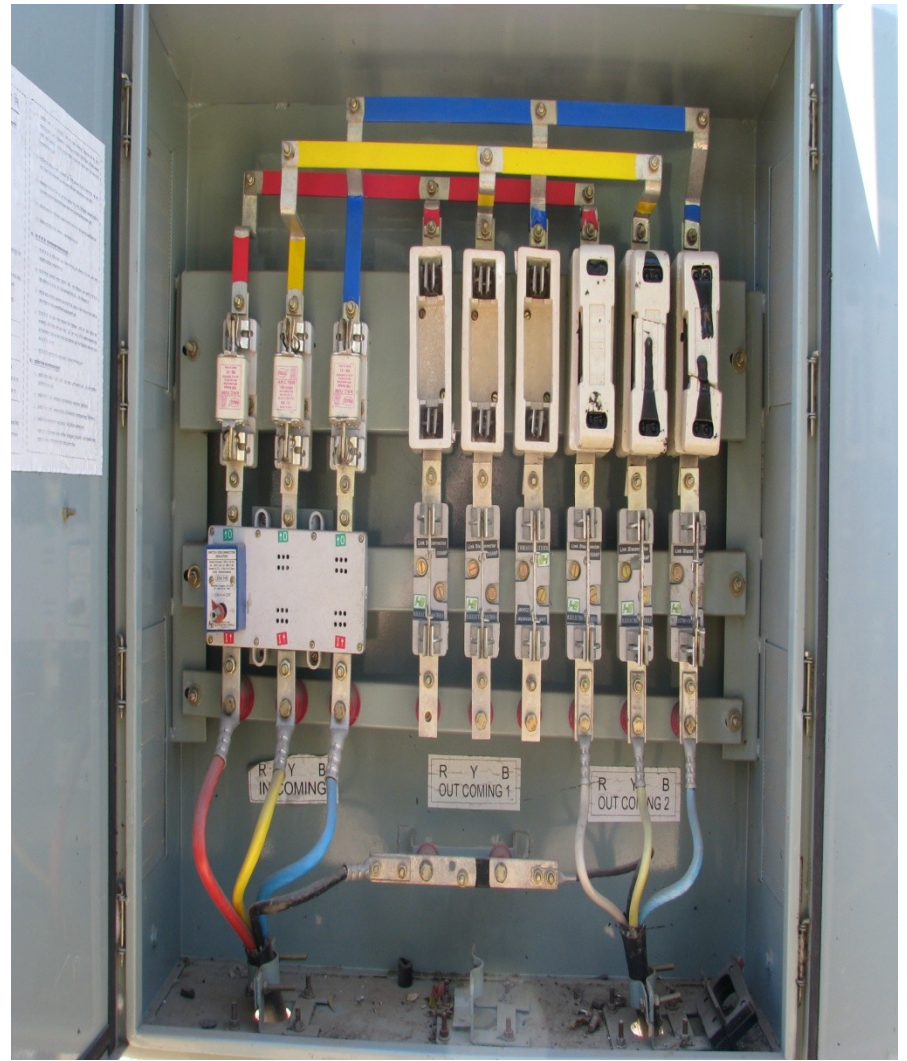
REPLACED BAD 11KV CONDUCTOR WITH SLEEVE. ALSO REPLACED WEAK PIN INSULATOR

2/21/12



BEFORE

BAD DB & MAINS CABLE REPLACED WITH CRIMPED LUGS NEAR
GMRT C SQ.AREA
2/21/12



AFTER

AT 13 LOCATIONS



BEFORE



AFTER

AROUND GMRT C SQ. AREA REMOVED GADAKH FUSES & PUT INSULATED JUMPS WITH CRIMPED LUGS & SLEEVED DO FUSES AT 10 LOCATIONS.
2/21/12



BEFORE



AFTER

NEAR KHODAD TEMPLE: GADAKH FUSES REMOVED ,IMPROVED
CONDUCTOR BINDINGS & PUT INSULATED & CRIMPED LUG JUMPS

2/21/12

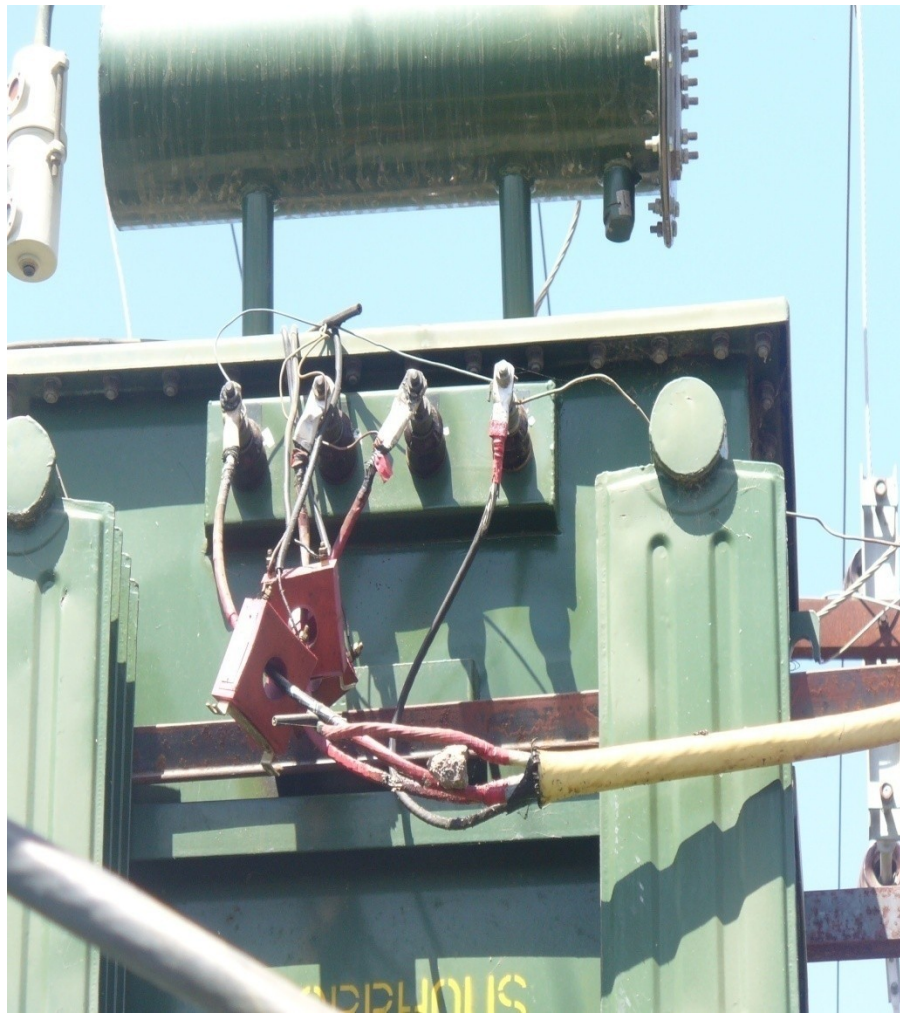


BEFO
RE



AFTE
R

PUT INSULATED & CRIMPED LUG JUMPS AT DP_s AROUND GMRT
10 LOCATION
2/21/12



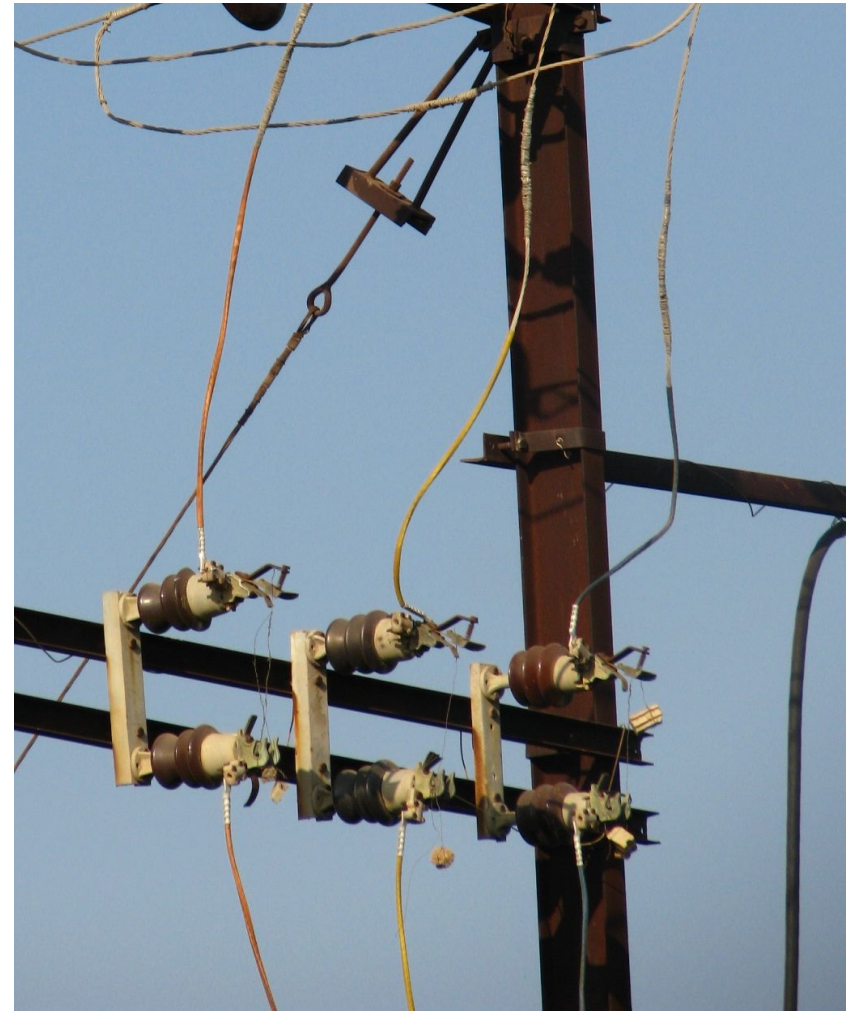
BEFORE



AFTER

REPLACED BAD DB & MAINS LT CABLE AT 13 LOCATIONS AROUND GMRT

2/21/12



BEFO
RE

AFTE
R

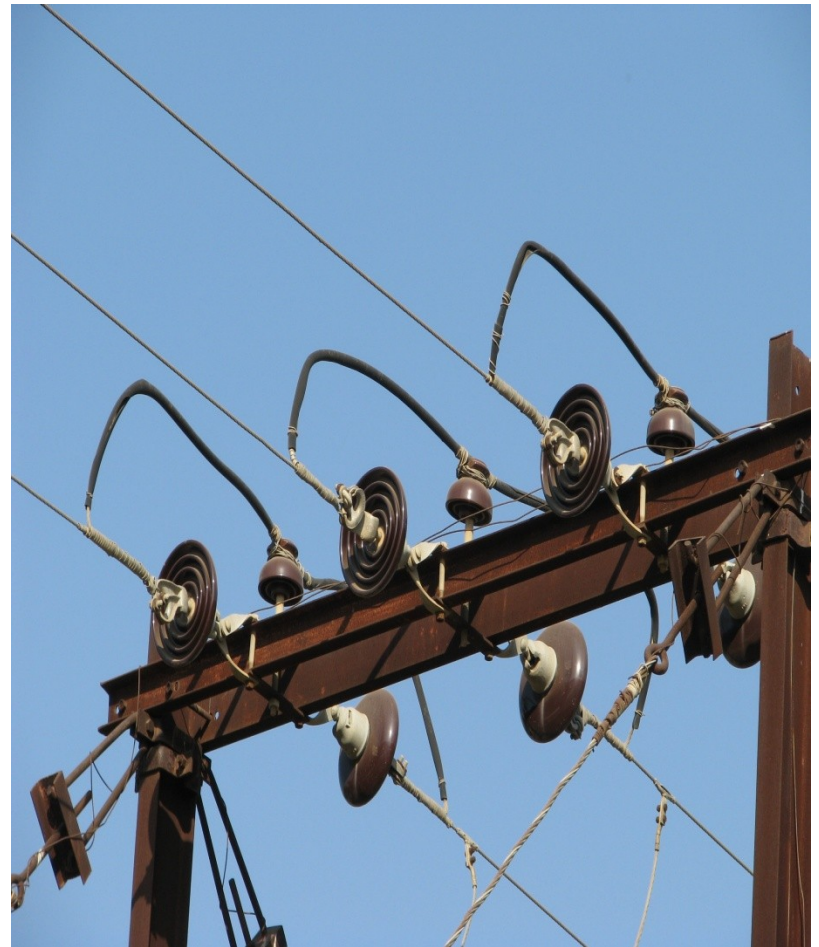
BAD CONDUCTOR BINDINGS ON DO FUSE INSULATOR
REPLACED WITH

2/21/12

INSULATED JUMPS WITH CRIMPED LUGS AT 10
LOCATION



BEFORE



AFTER

BAD JUMPS ON CUT POINT REPLACED WITH SLEEVED JUMPS
AT 11KV WEST FEEDER

2/21/12



REPLACED BAD JUMPS, DB & 70 SQ.MM LT CABLE WITH INSULATED
CRIMPED LUGS JUMPS AT THORAT MALA DP NO 1 NEAR GMRT CSQ. AREA
2/21/12