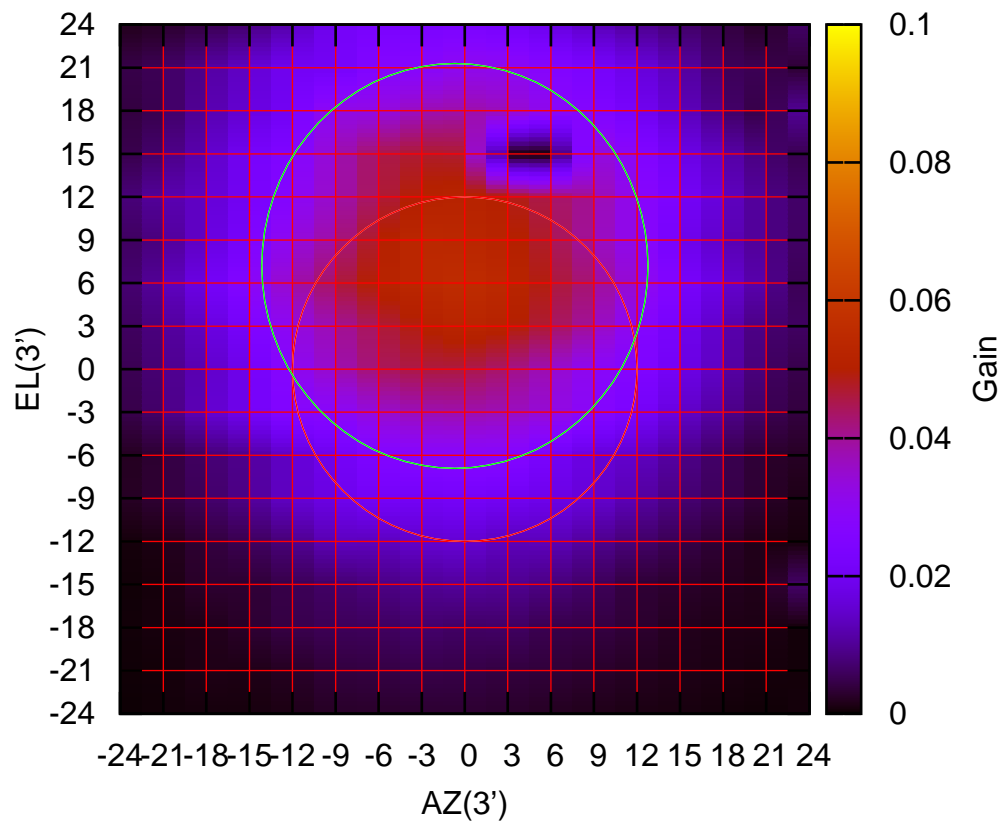


C00-130 AZOFF= -0.7' AZBEAM= 26.9'

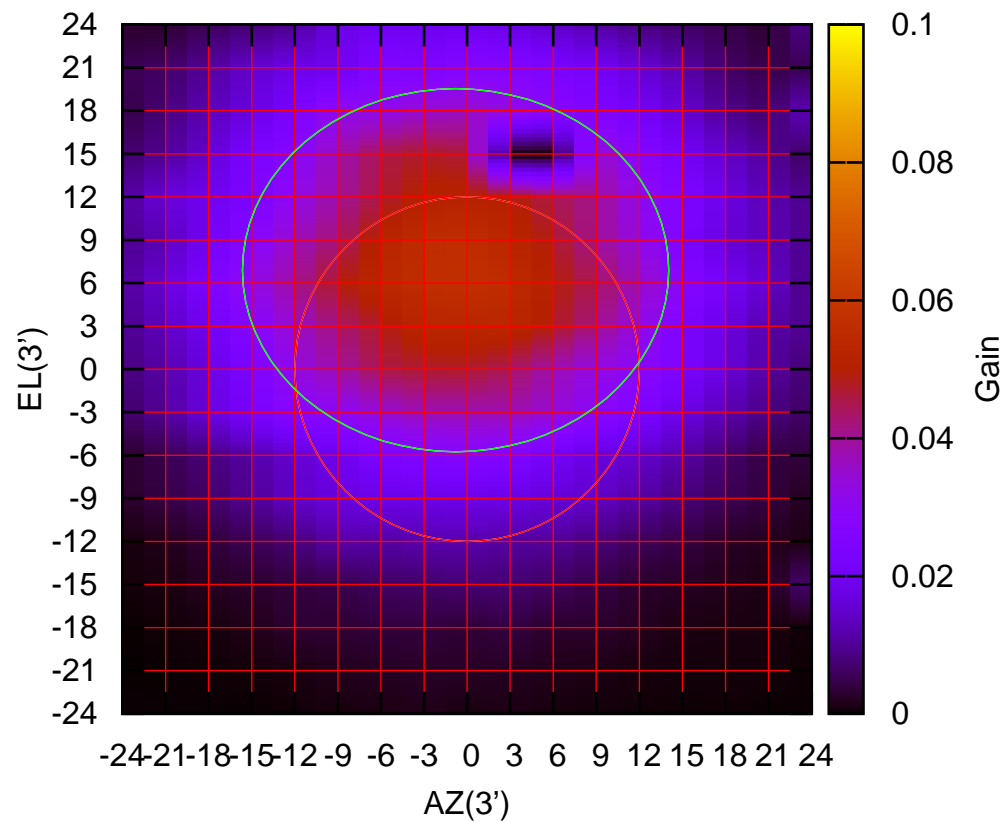
1170 MHz.



C00-130 ELOFF= 7.2' ELBEAM= 28.2'

C00-175 AZOFF= -0.8' AZBEAM= 29.7'

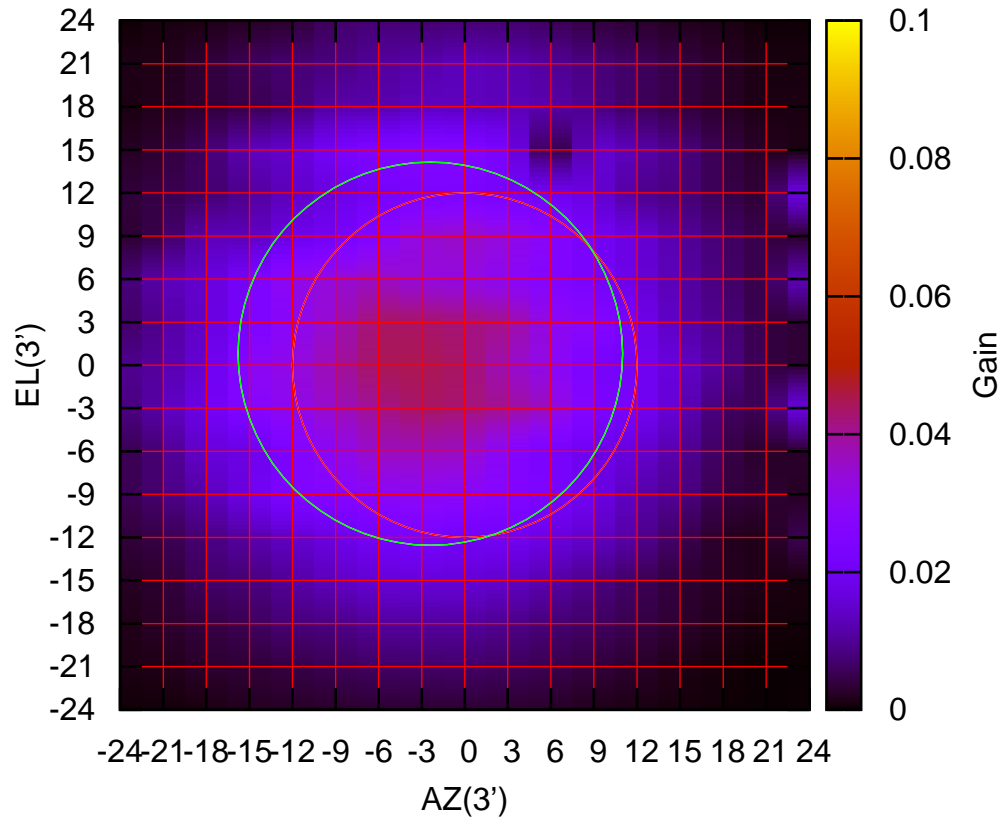
1170 MHz.



C00-175 ELOFF= 6.9' ELBEAM= 25.3'

C01-130 AZOFF= -2.4' AZBEAM= 26.8'

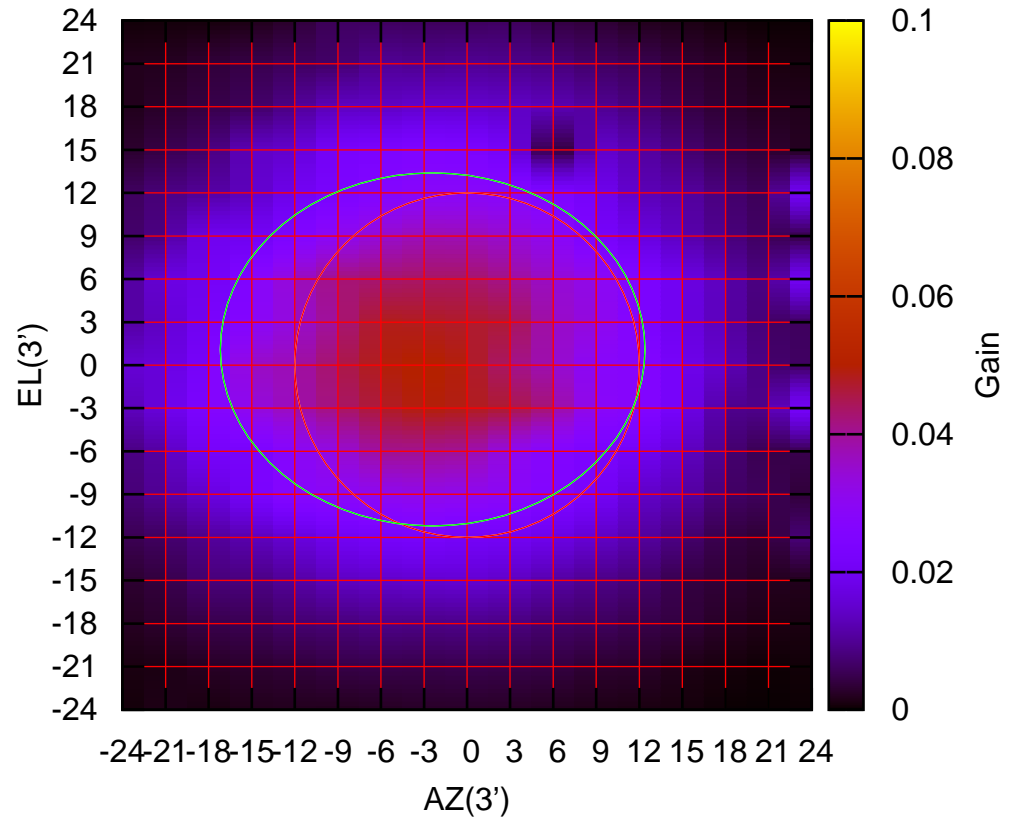
1170 MHz.



C01-130 ELOFF= 0.8' ELBEAM= 26.7'

C01-175 AZOFF= -2.4' AZBEAM= 29.6'

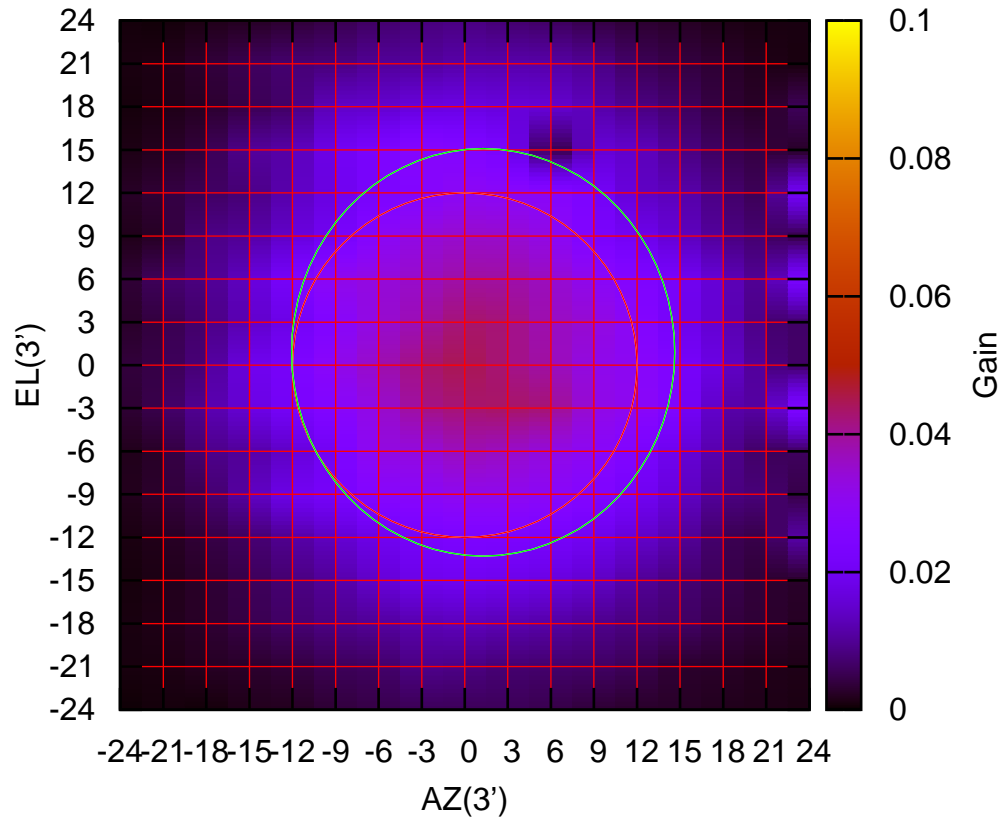
1170 MHz.



C01-175 ELOFF= 1.1' ELBEAM= 24.6'

C02-130 AZOFF= 1.3' AZBEAM= 26.7'

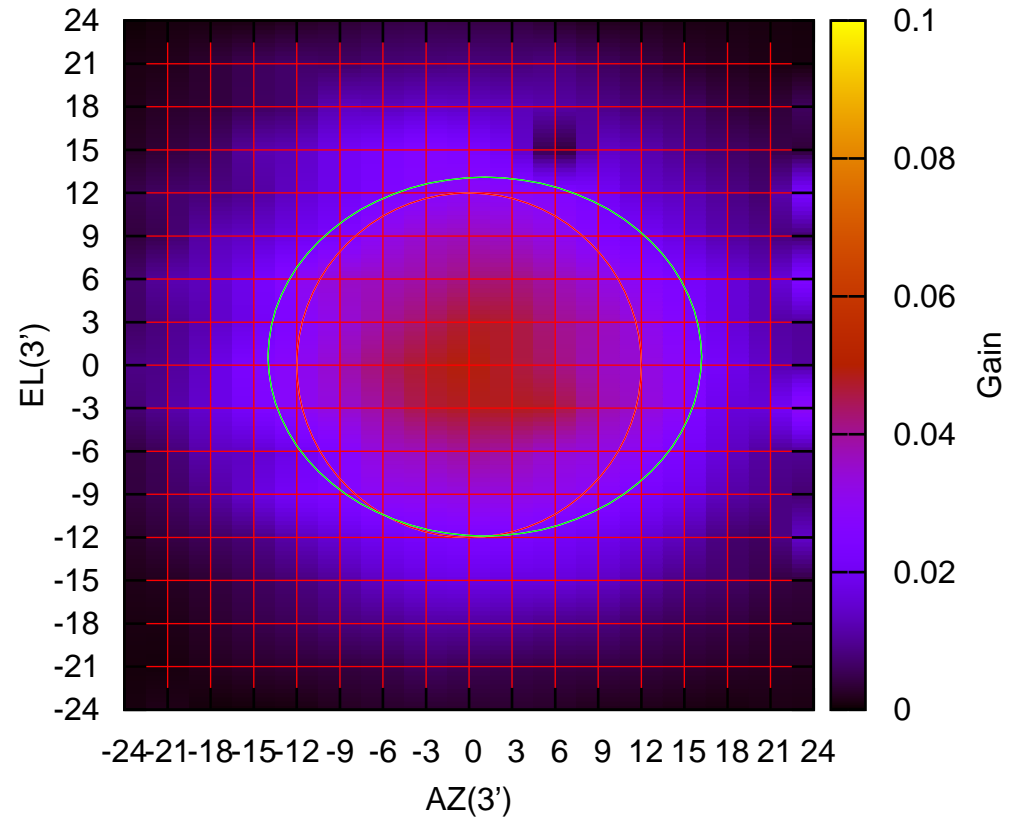
1170 MHz.



C02-130 ELOFF= 0.9' ELBEAM= 28.4'

C02-175 AZOFF= 1.1' AZBEAM= 30.2'

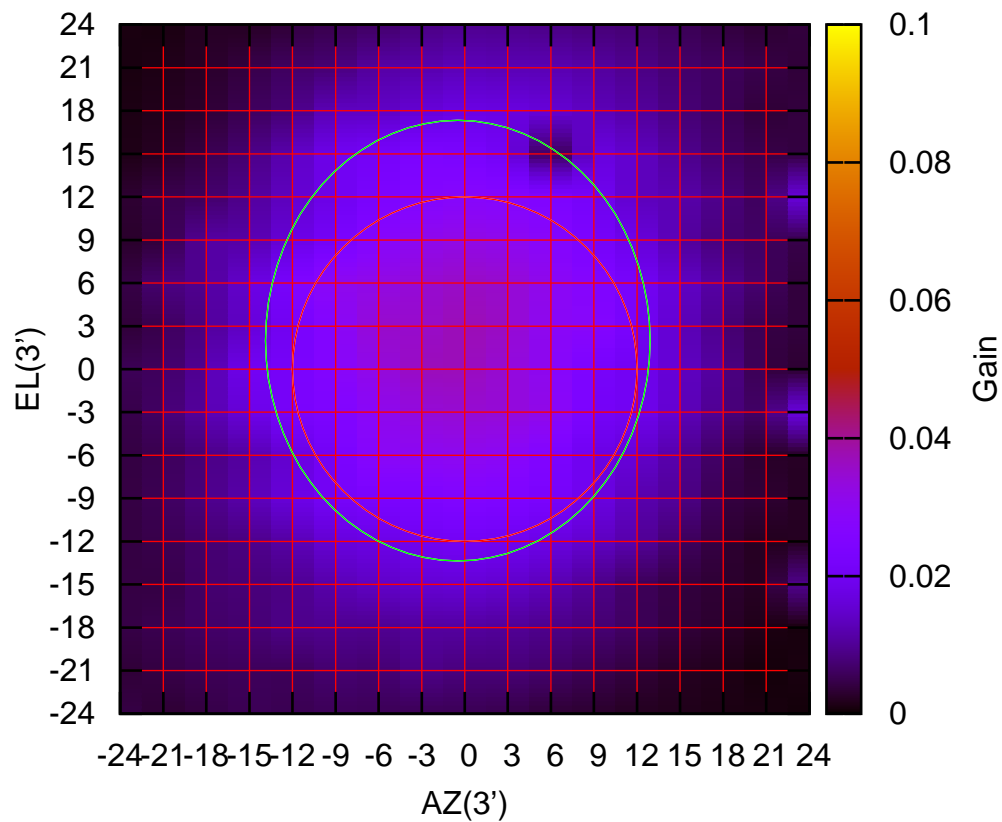
1170 MHz.



C02-175 ELOFF= 0.6' ELBEAM= 25.0'

C03-130 AZOFF= -0.5' AZBEAM= 26.8'

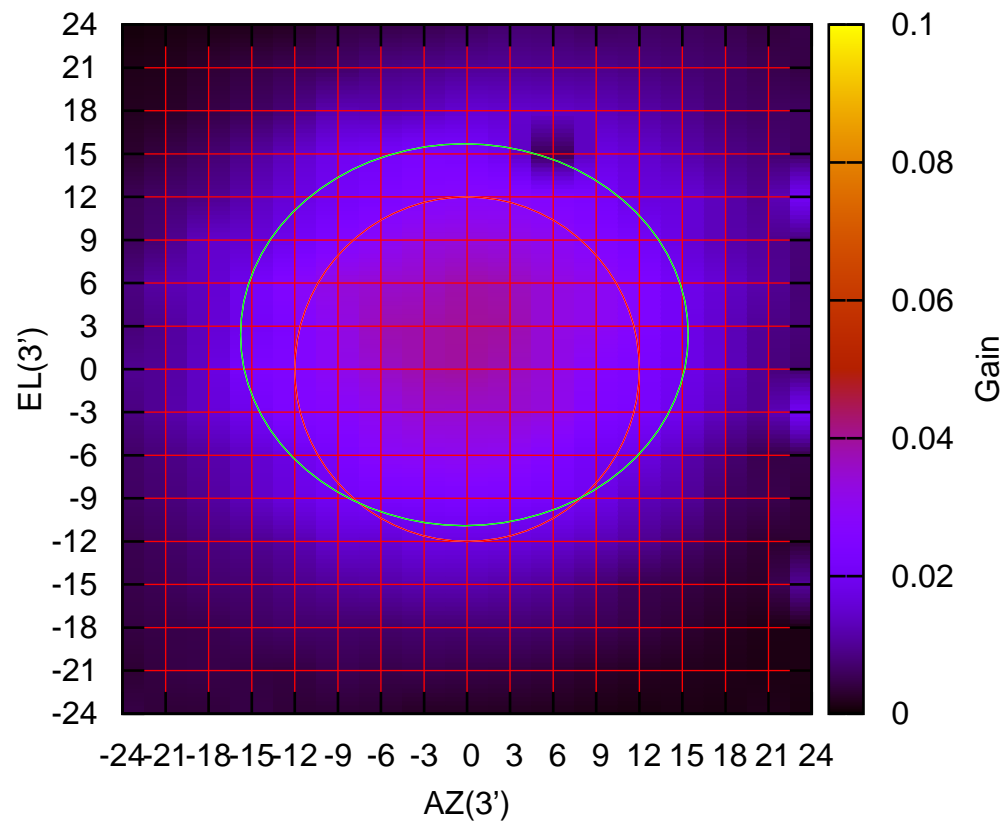
1170 MHz.



C03-130 ELOFF= 2.0' ELBEAM= 30.7'

C03-175 AZOFF= -0.2' AZBEAM= 31.2'

1170 MHz.

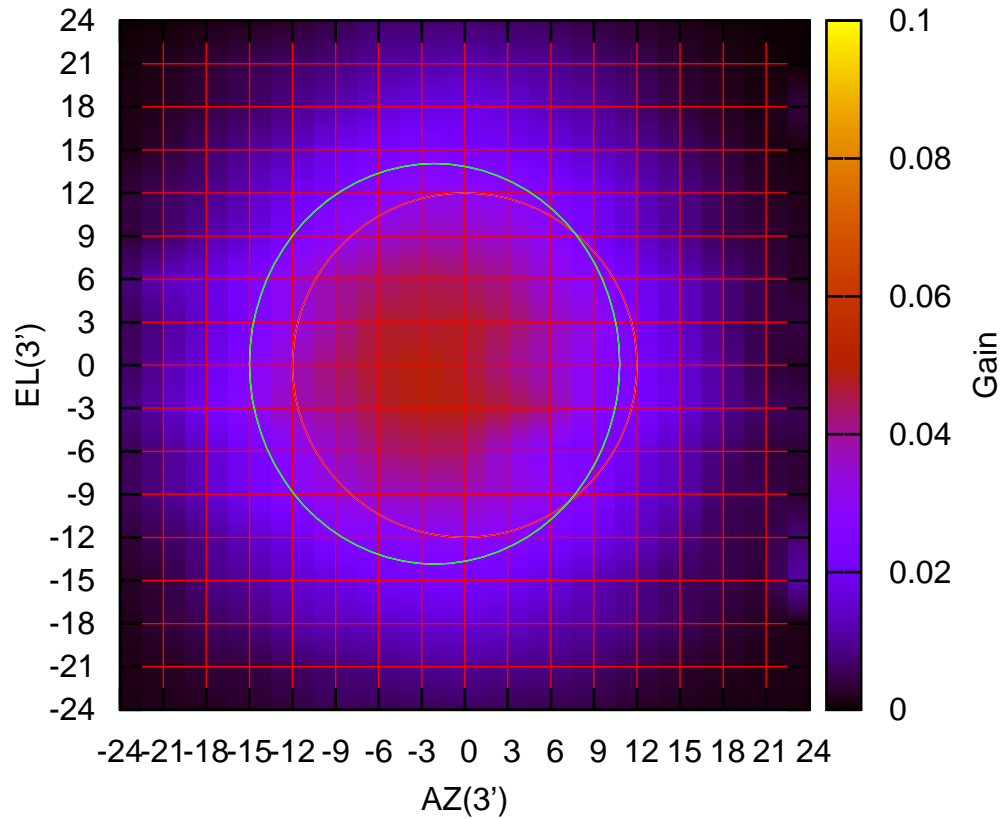


C03-175 ELOFF= 2.4' ELBEAM= 26.6'



C04-130 AZOFF= -2.1' AZBEAM= 25.8'

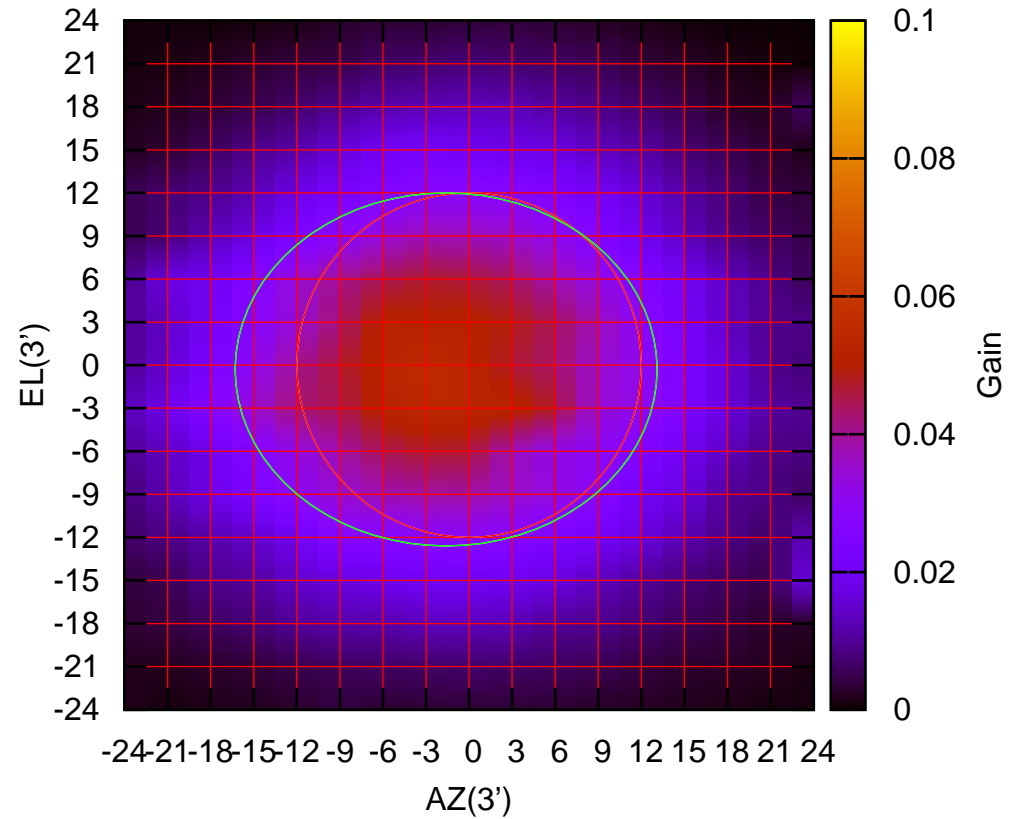
1170 MHz.



C04-130 ELOFF= 0.1' ELBEAM= 27.9'

C04-175 AZOFF= -1.6' AZBEAM= 29.4'

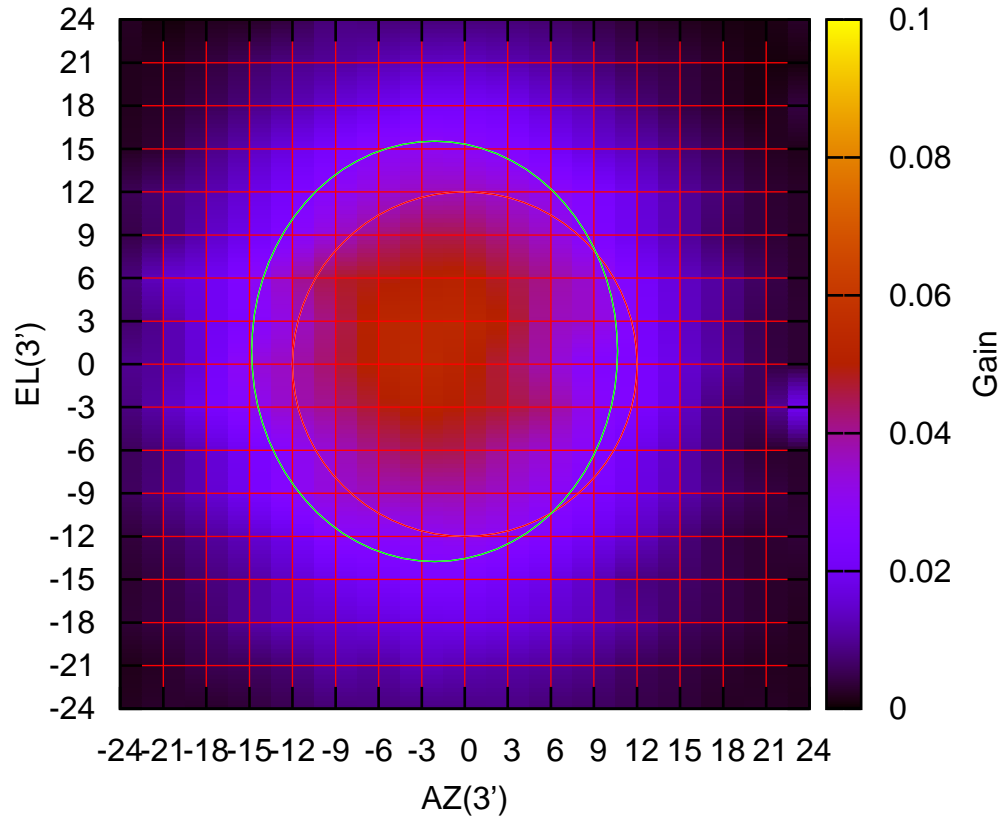
1170 MHz.



C04-175 ELOFF= -0.3' ELBEAM= 24.6'

C05-130 AZOFF= -2.1' AZBEAM= 25.5'

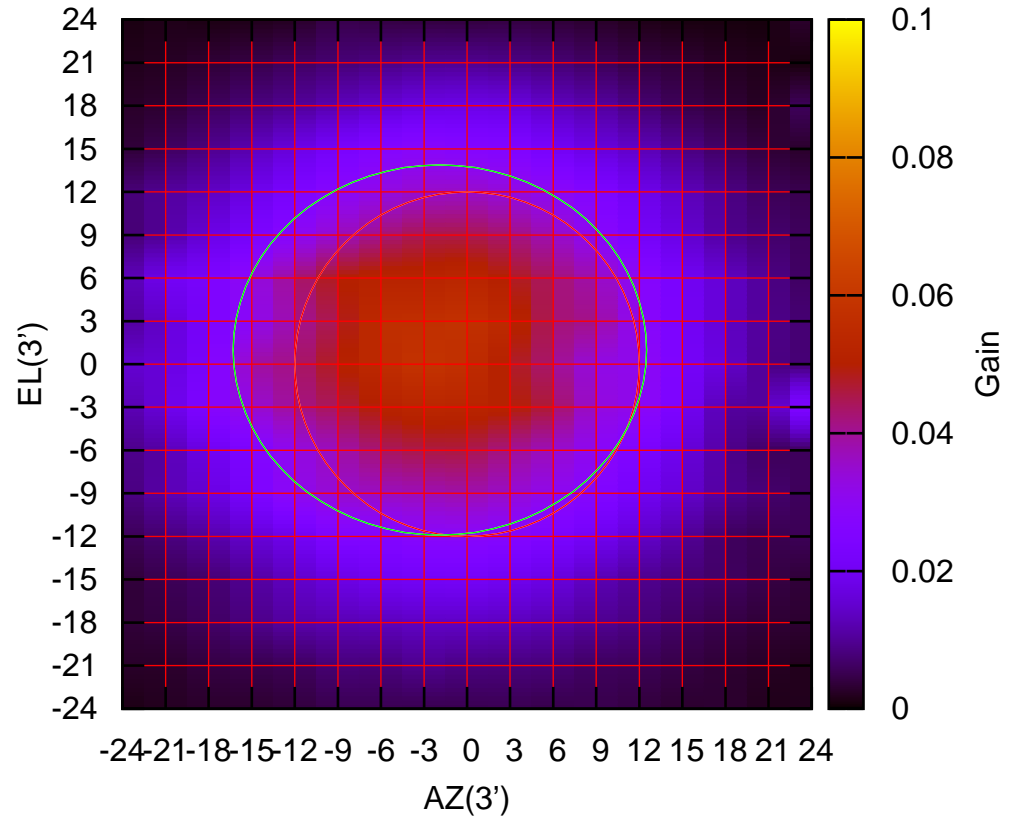
1170 MHz.



C05-130 ELOFF= 0.9' ELBEAM= 29.3'

C05-175 AZOFF= -1.9' AZBEAM= 28.8'

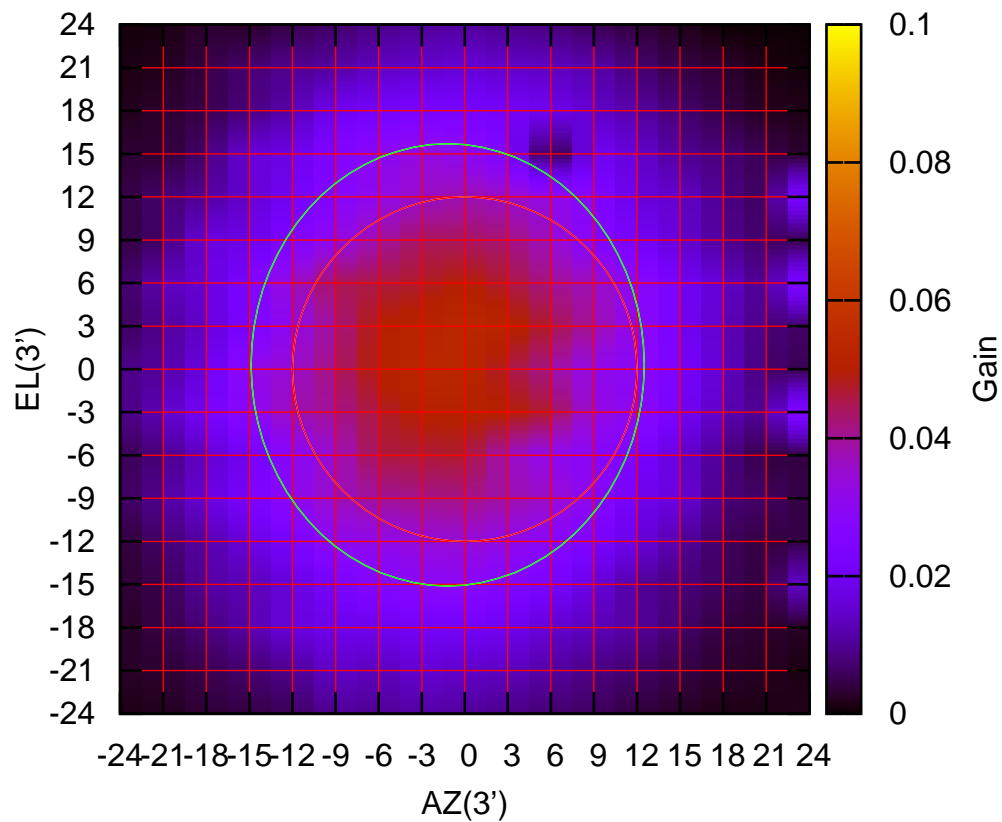
1170 MHz.



C05-175 ELOFF= 1.0' ELBEAM= 25.8'

C06-130 AZOFF= -1.2' AZBEAM= 27.4'

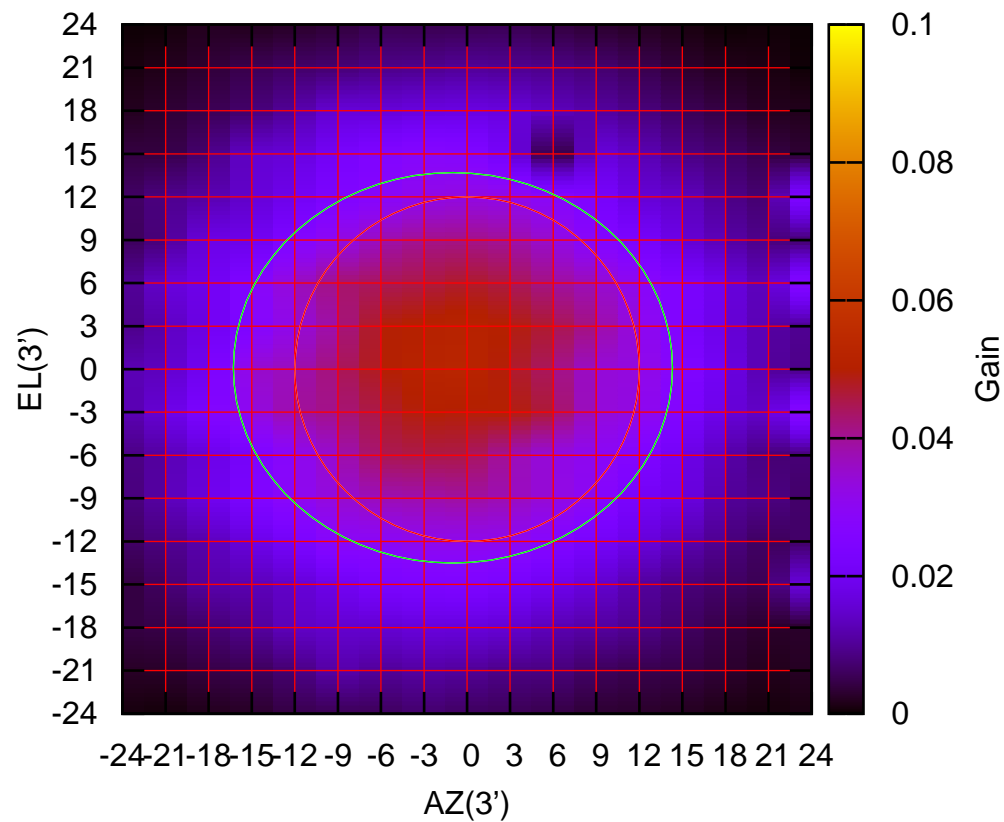
1170 MHz.



C06-130 ELOFF= 0.3' ELBEAM= 30.8'

C06-175 AZOFF= -1.0' AZBEAM= 30.6'

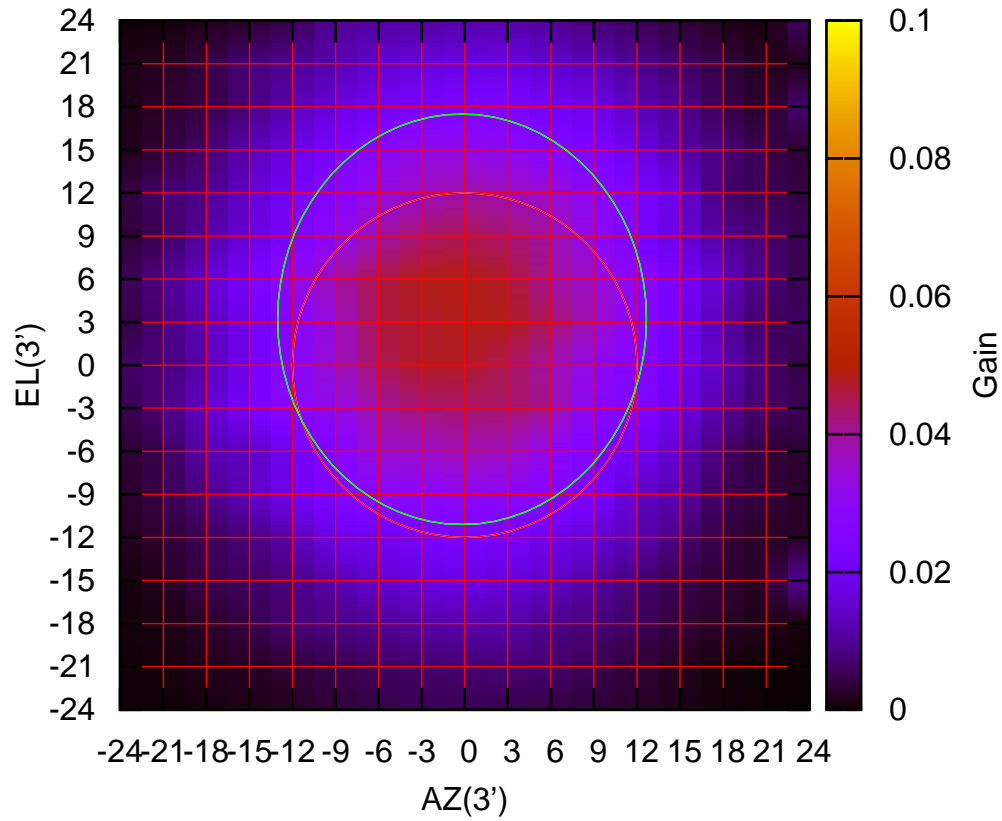
1170 MHz.



C06-175 ELOFF= 0.1' ELBEAM= 27.2'

C08-130 AZOFF= -0.2' AZBEAM= 25.7'

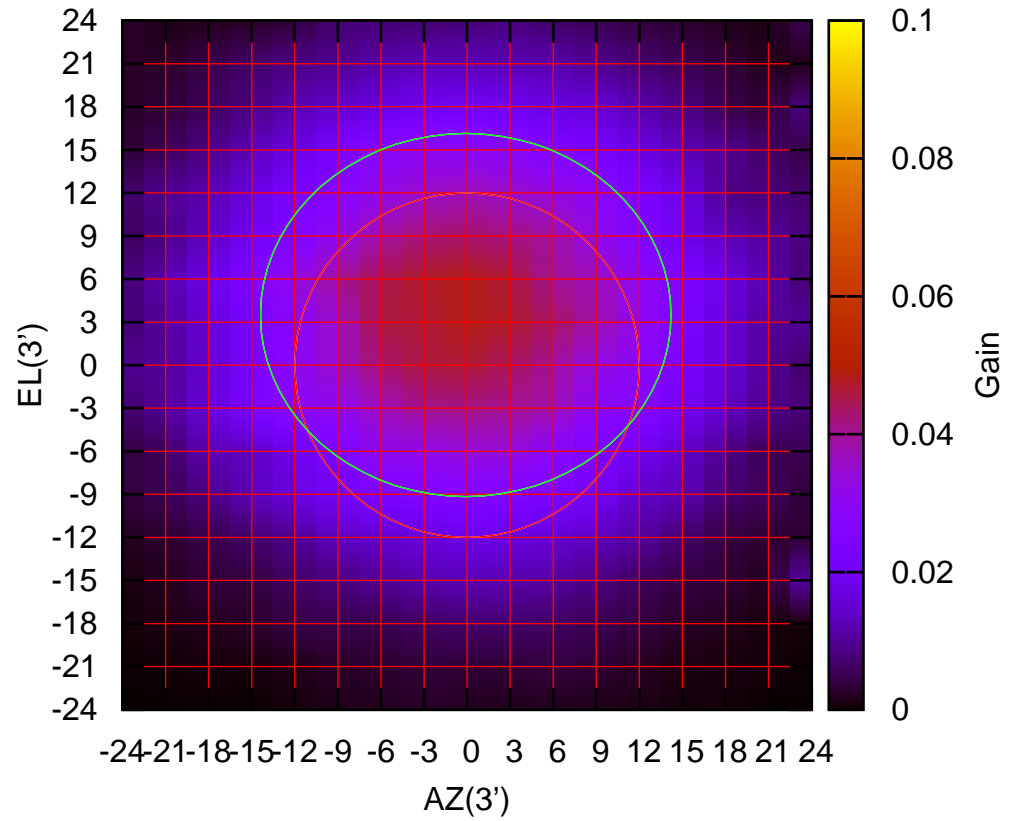
1170 MHz.



C08-130 ELOFF= 3.2' ELBEAM= 28.6'

C08-175 AZOFF= -0.1' AZBEAM= 28.6'

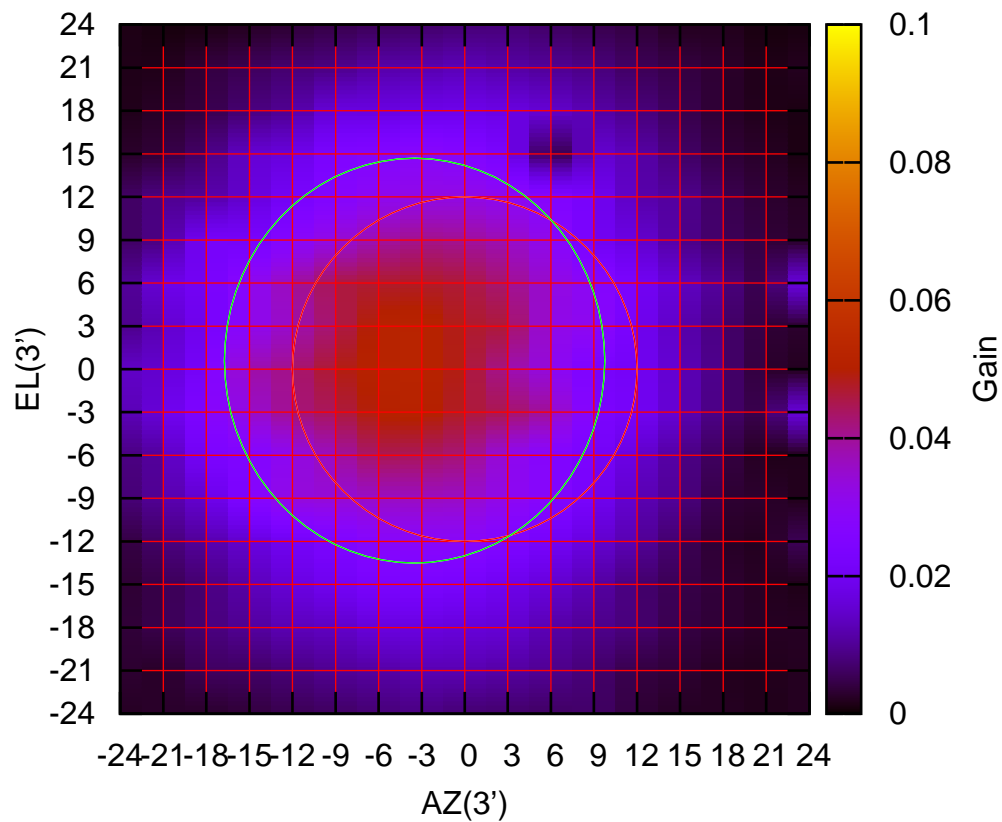
1170 MHz.



C08-175 ELOFF= 3.5' ELBEAM= 25.3'

C09-130 AZOFF= -3.5' AZBEAM= 26.5'

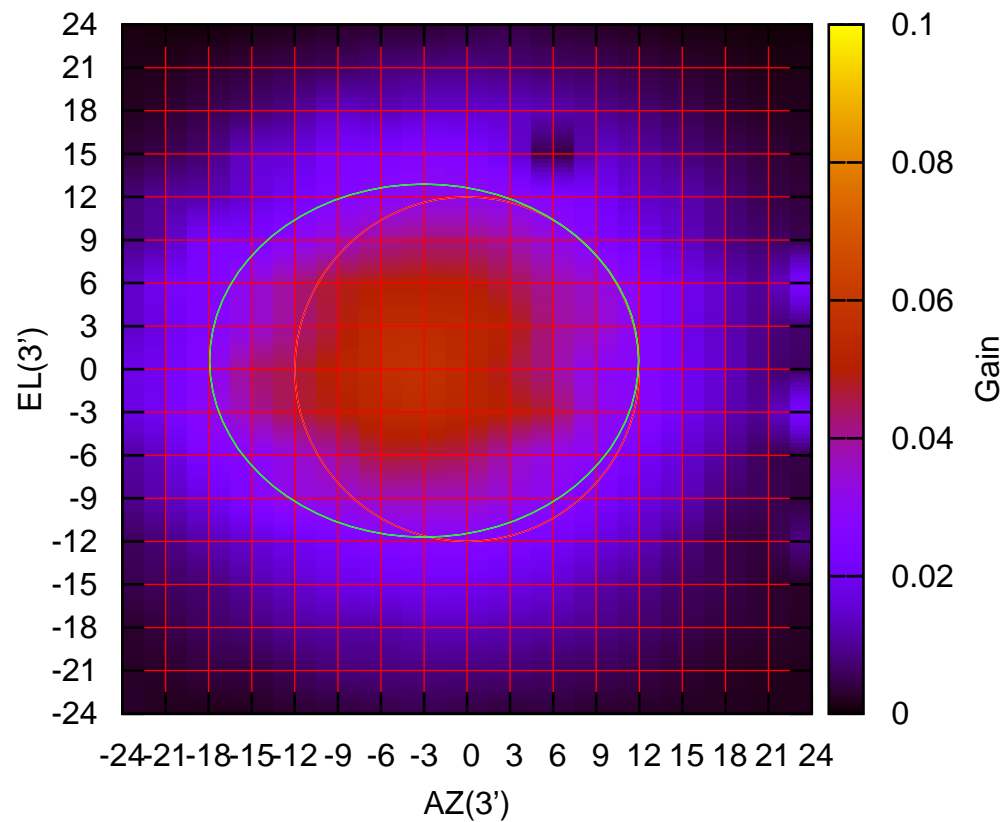
1170 MHz.



C09-130 ELOFF= 0.6' ELBEAM= 28.2'

C09-175 AZOFF= -3.0' AZBEAM= 29.9'

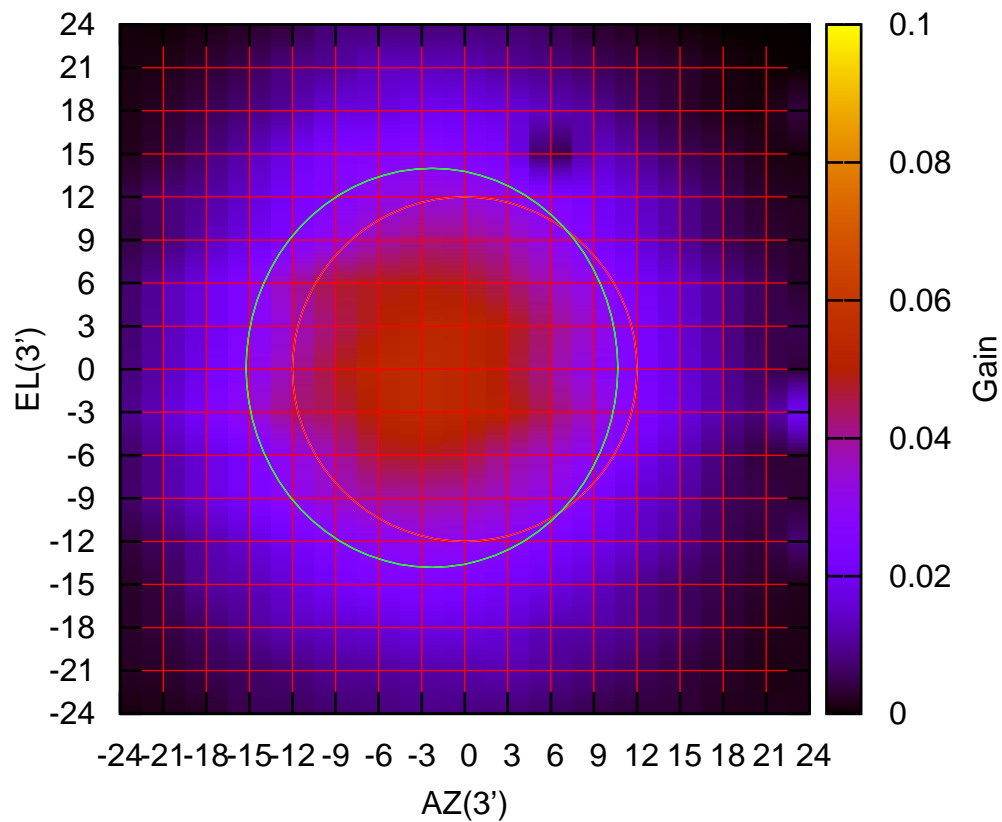
1170 MHz.



C09-175 ELOFF= 0.6' ELBEAM= 24.6'

C10-130 AZOFF= -2.3' AZBEAM= 25.9'

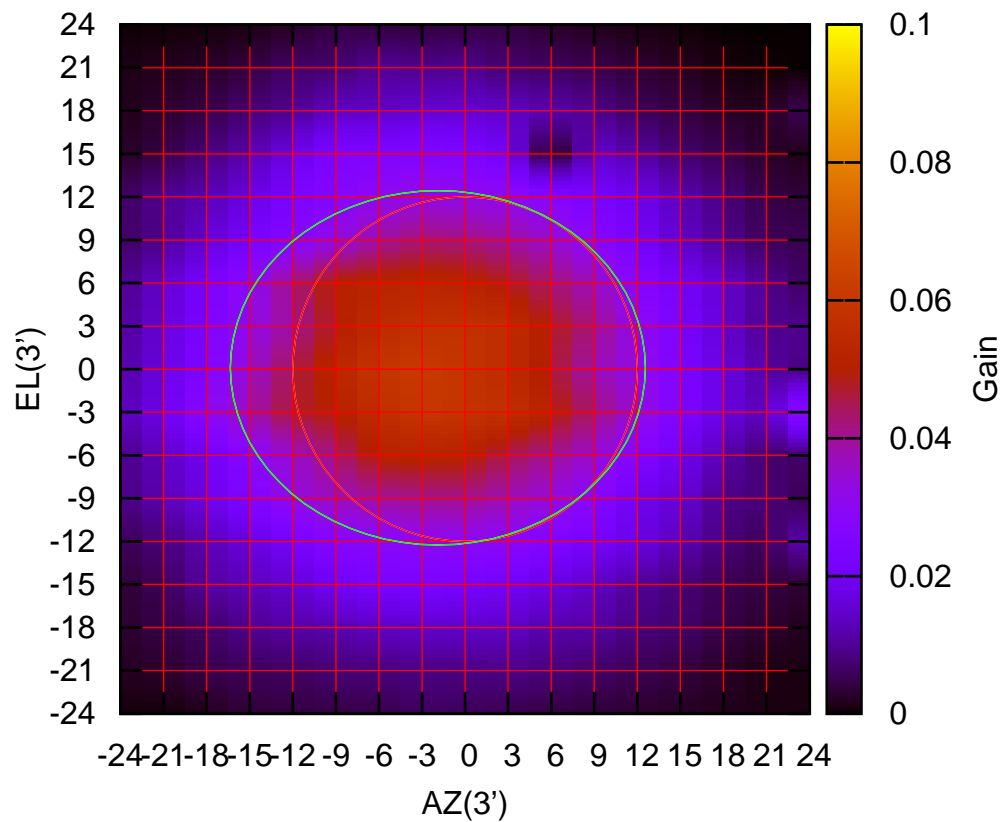
1170 MHz.



C10-130 ELOFF= 0.1' ELBEAM= 27.8'

C10-175 AZOFF= -1.9' AZBEAM= 28.9'

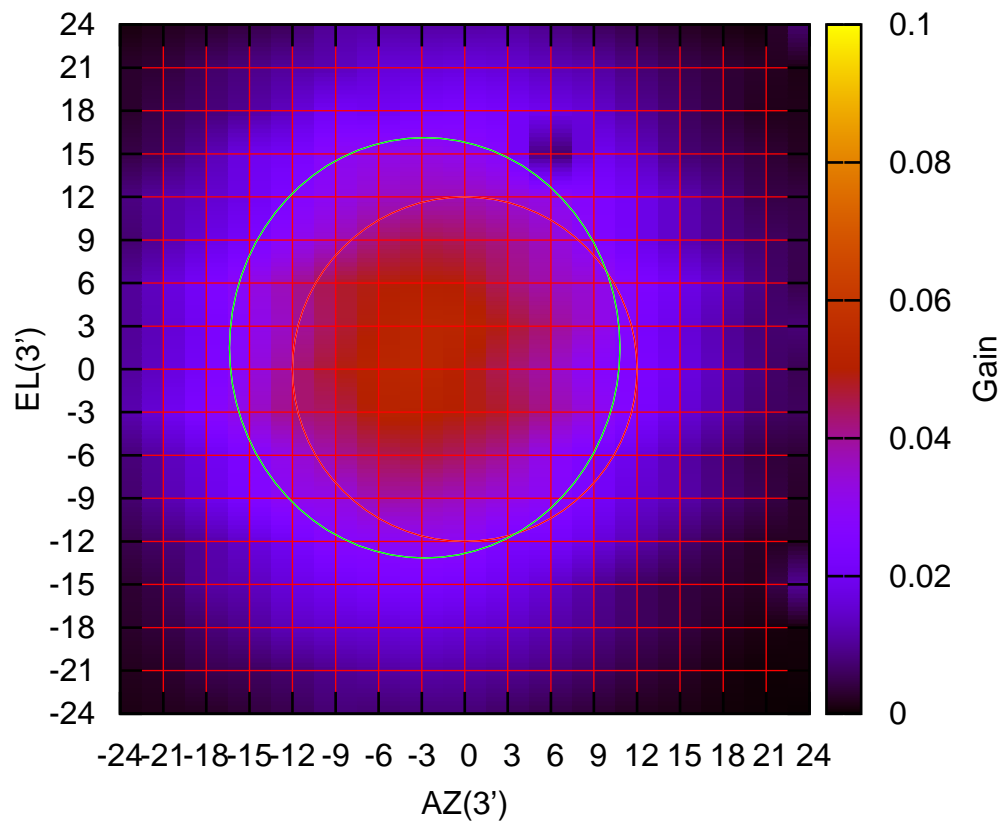
1170 MHz.



C10-175 ELOFF= 0.1' ELBEAM= 24.7'

C11-130 AZOFF= -2.8' AZBEAM= 27.2'

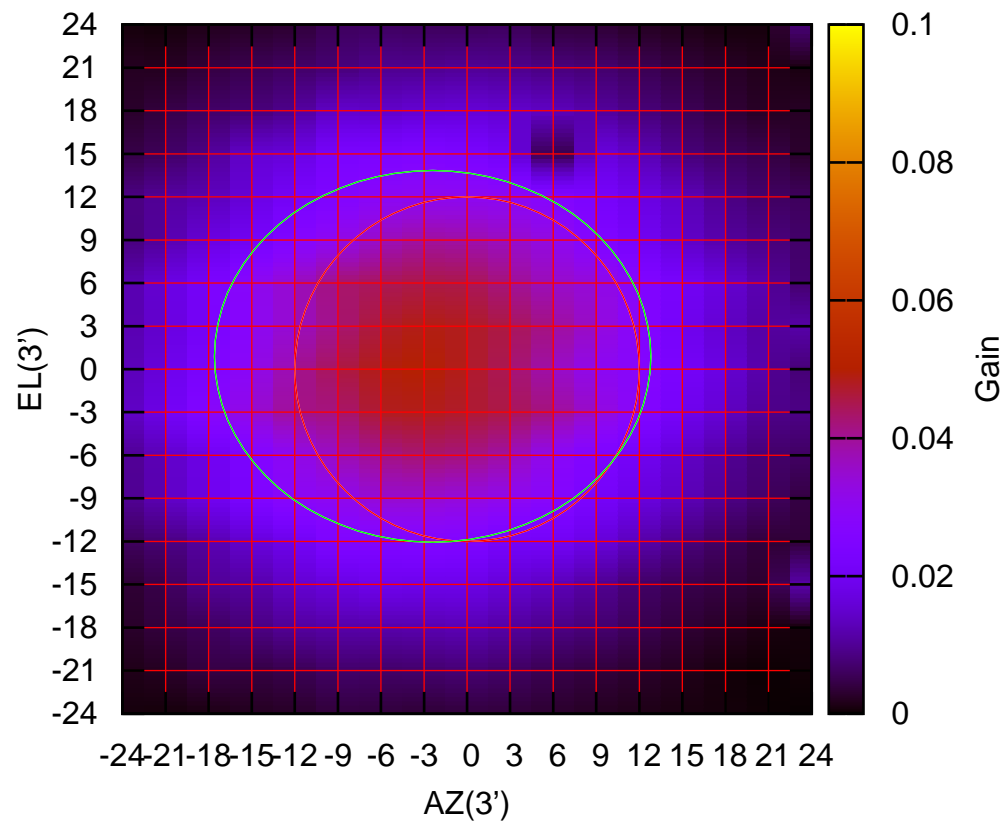
1170 MHz.



C11-130 ELOFF= 1.5' ELBEAM= 29.3'

C11-175 AZOFF= -2.4' AZBEAM= 30.4'

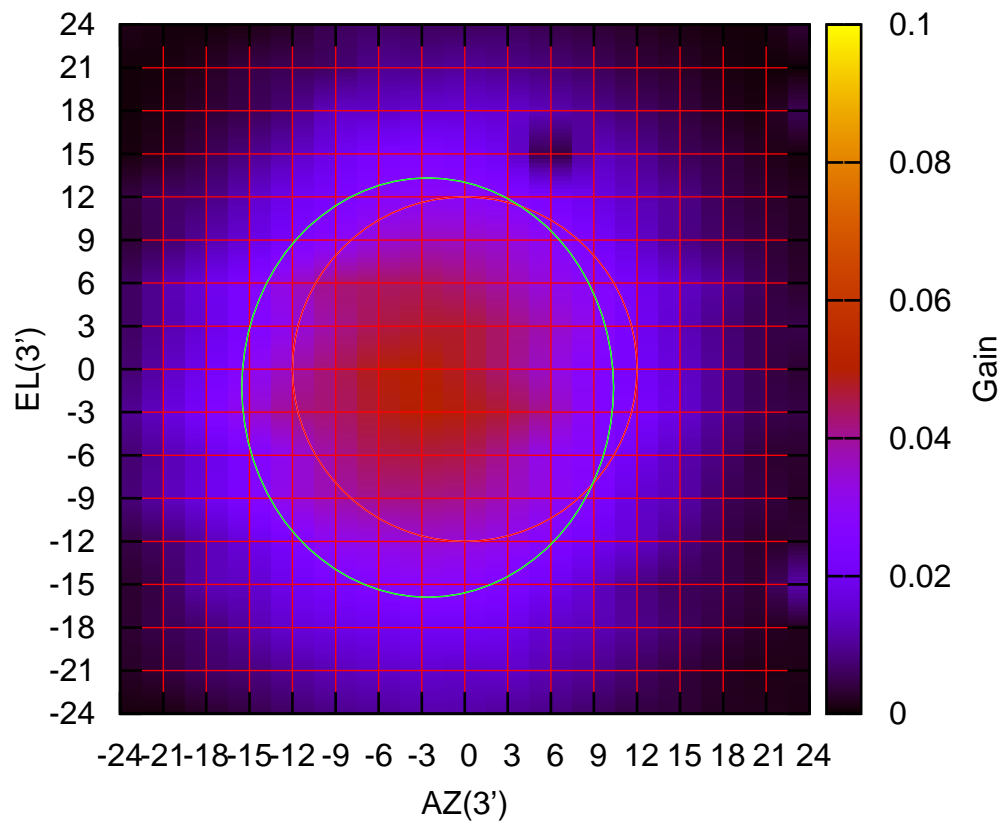
1170 MHz.



C11-175 ELOFF= 0.9' ELBEAM= 25.9'

C12-130 AZOFF= -2.6' AZBEAM= 25.9'

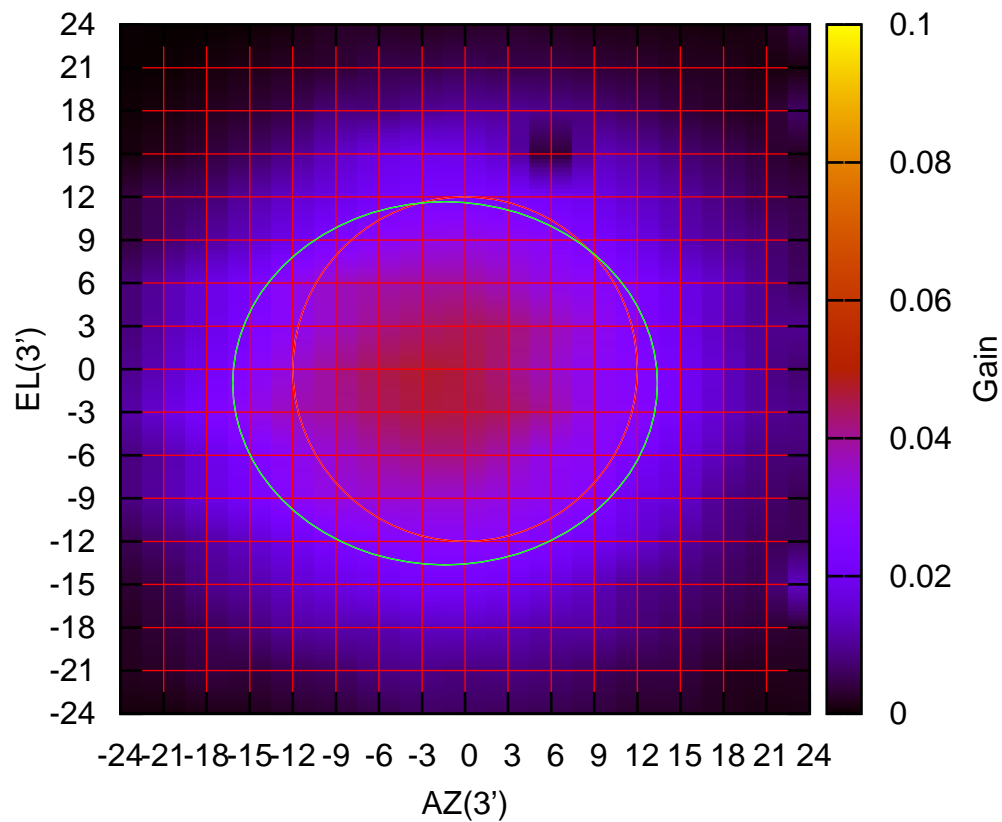
1170 MHz.



C12-130 ELOFF= -1.3' ELBEAM= 29.2'

C12-175 AZOFF= -1.4' AZBEAM= 29.6'

1170 MHz.

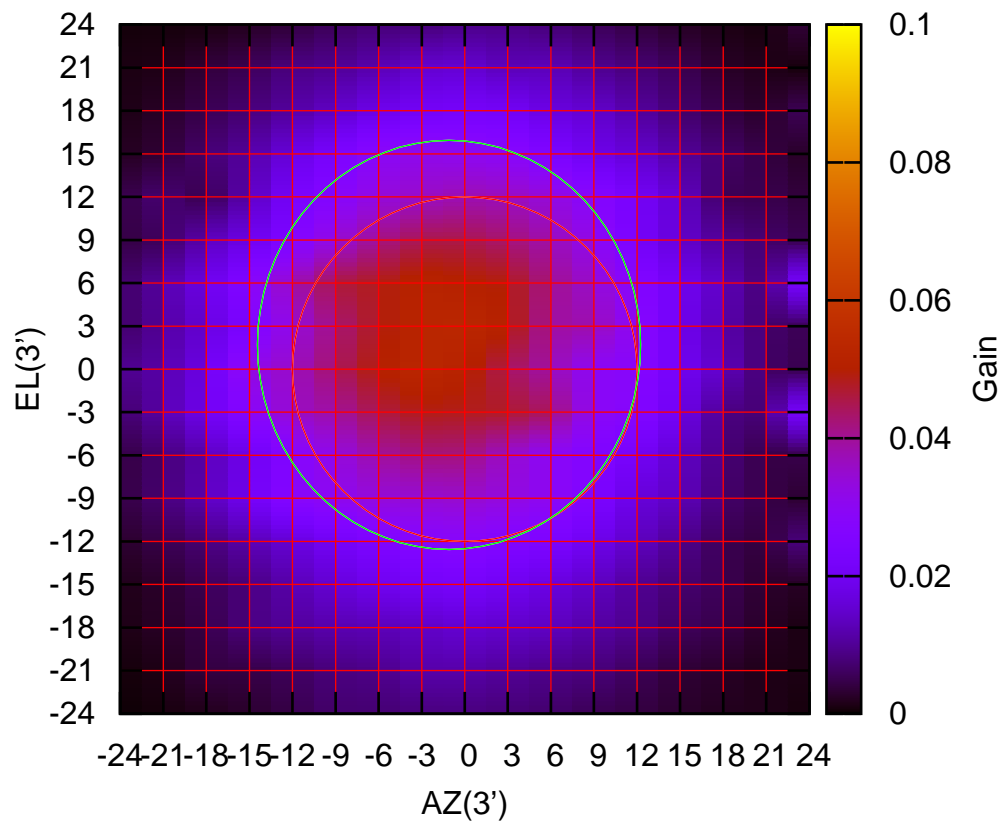


C12-175 ELOFF= -1.0' ELBEAM= 25.3'



C13-130 AZOFF= -1.1' AZBEAM= 26.7'

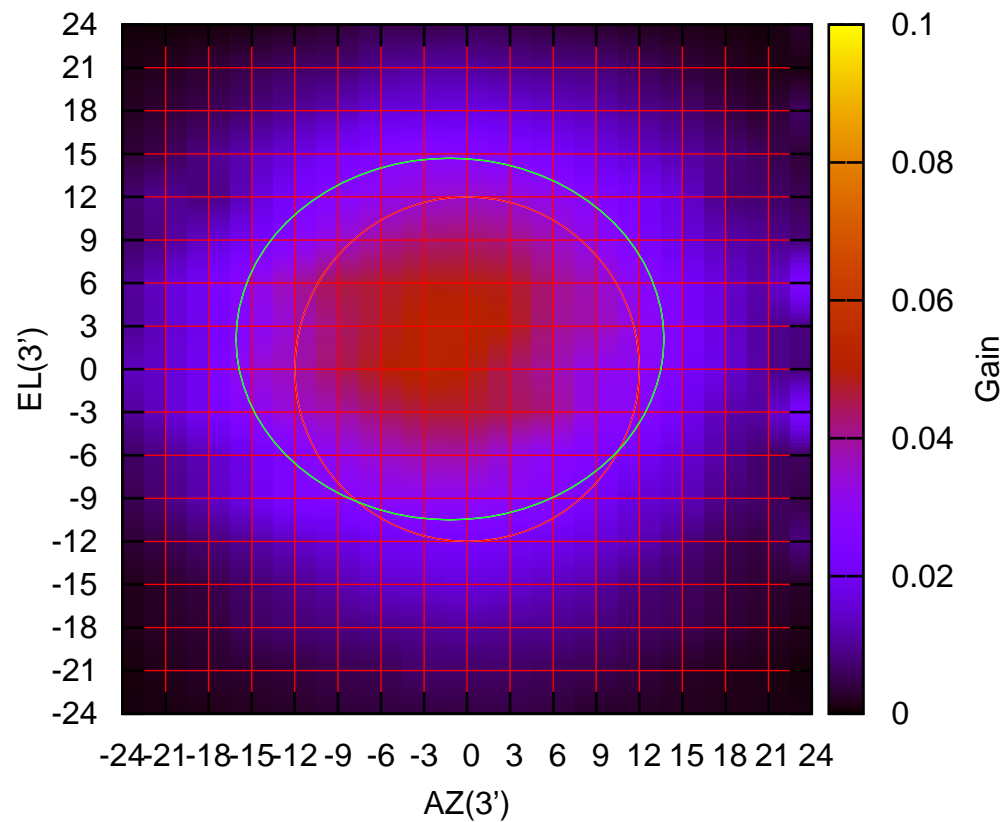
1170 MHz.



C13-130 ELOFF= 1.7' ELBEAM= 28.5'

C13-175 AZOFF= -1.2' AZBEAM= 29.8'

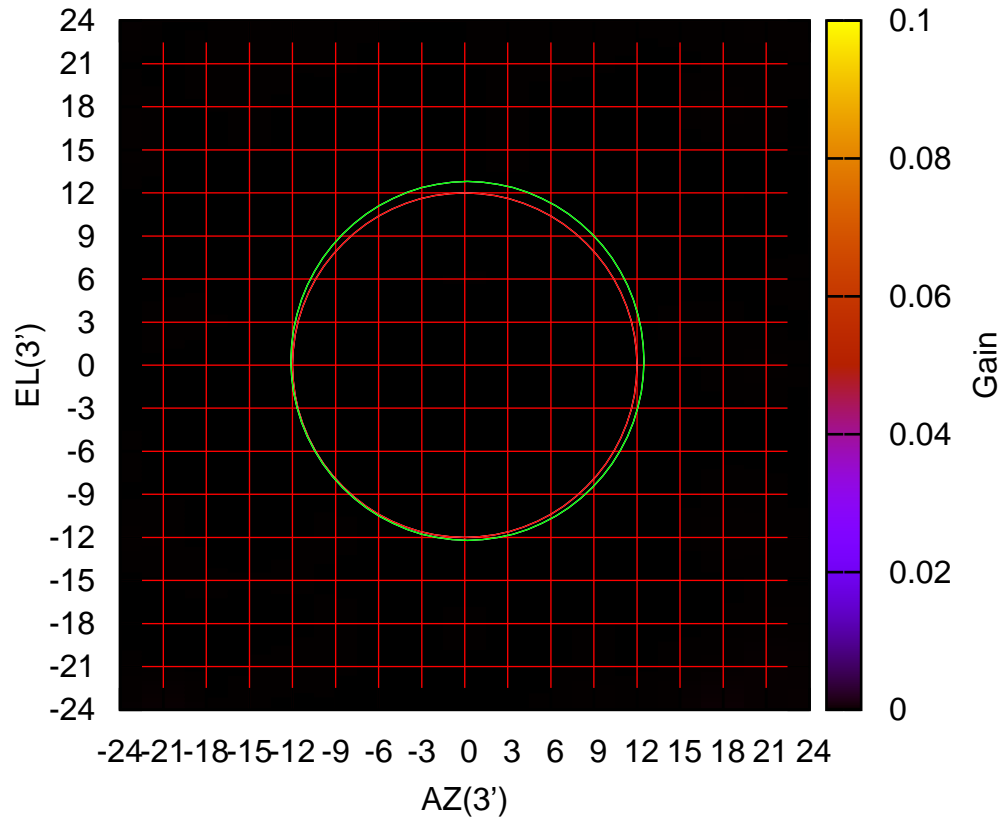
1170 MHz.



C13-175 ELOFF= 2.1' ELBEAM= 25.2'

C14-130 AZOFF= 0.2' AZBEAM= 24.6'

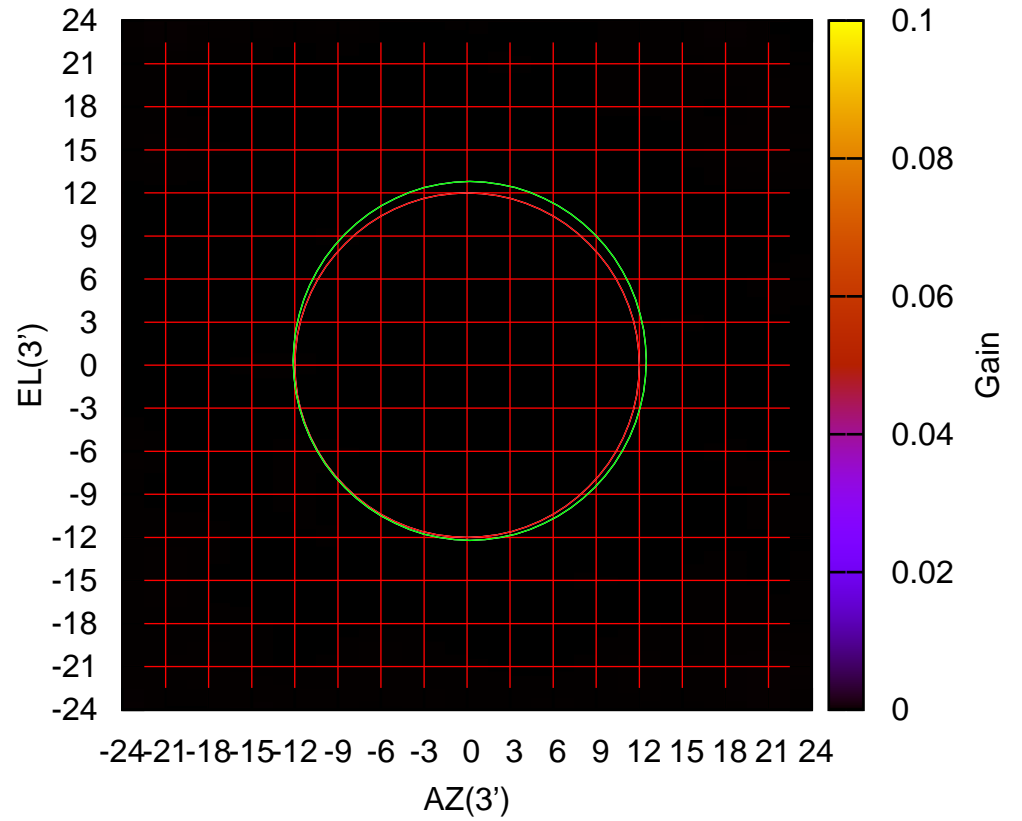
1170 MHz.



C14-130 ELOFF= 0.3' ELBEAM= 25.0'

C14-175 AZOFF= 0.2' AZBEAM= 24.6'

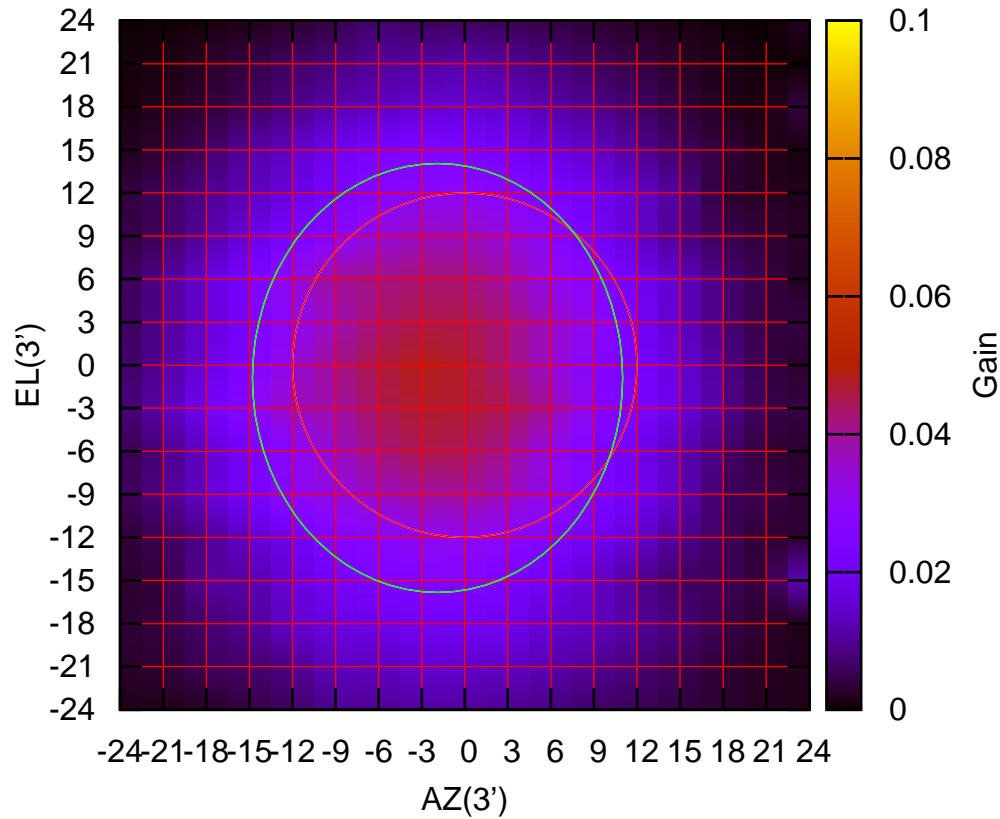
1170 MHz.



C14-175 ELOFF= 0.3' ELBEAM= 25.0'

W01-130 AZOFF= -1.9' AZBEAM= 25.8'

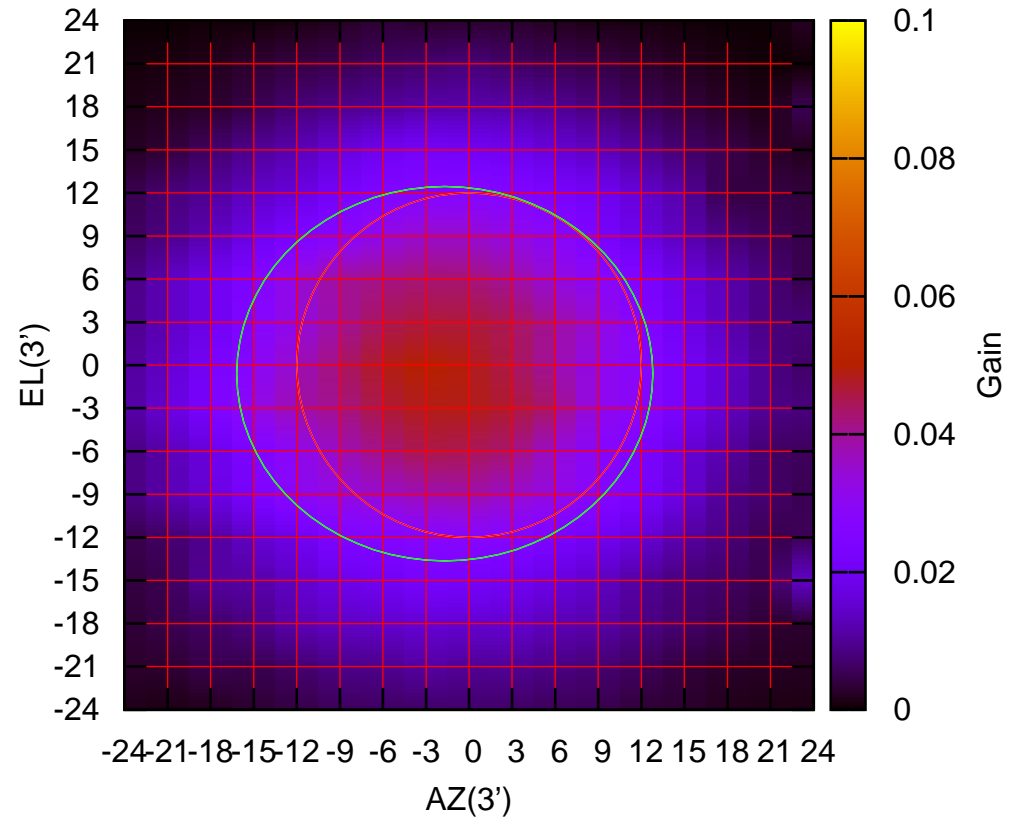
1170 MHz.



W01-130 ELOFF= -0.9' ELBEAM= 29.9'

W01-175 AZOFF= -1.7' AZBEAM= 29.0'

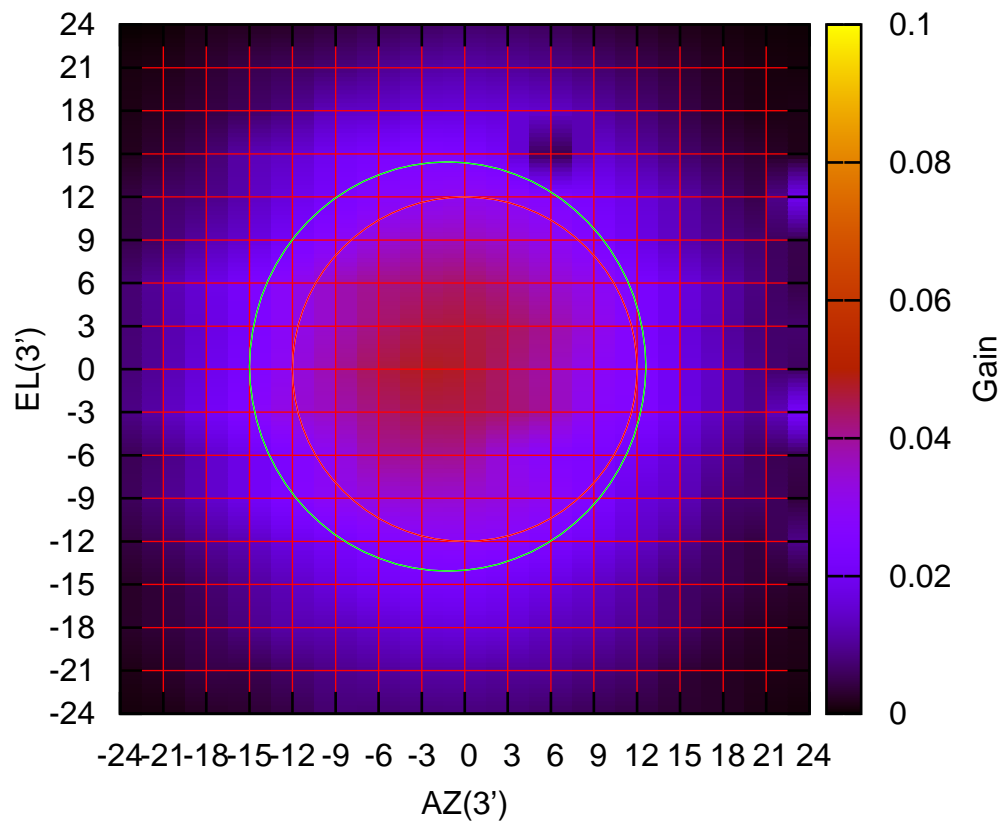
1170 MHz.



W01-175 ELOFF= -0.6' ELBEAM= 26.1'

W02-130 AZOFF= -1.2' AZBEAM= 27.6'

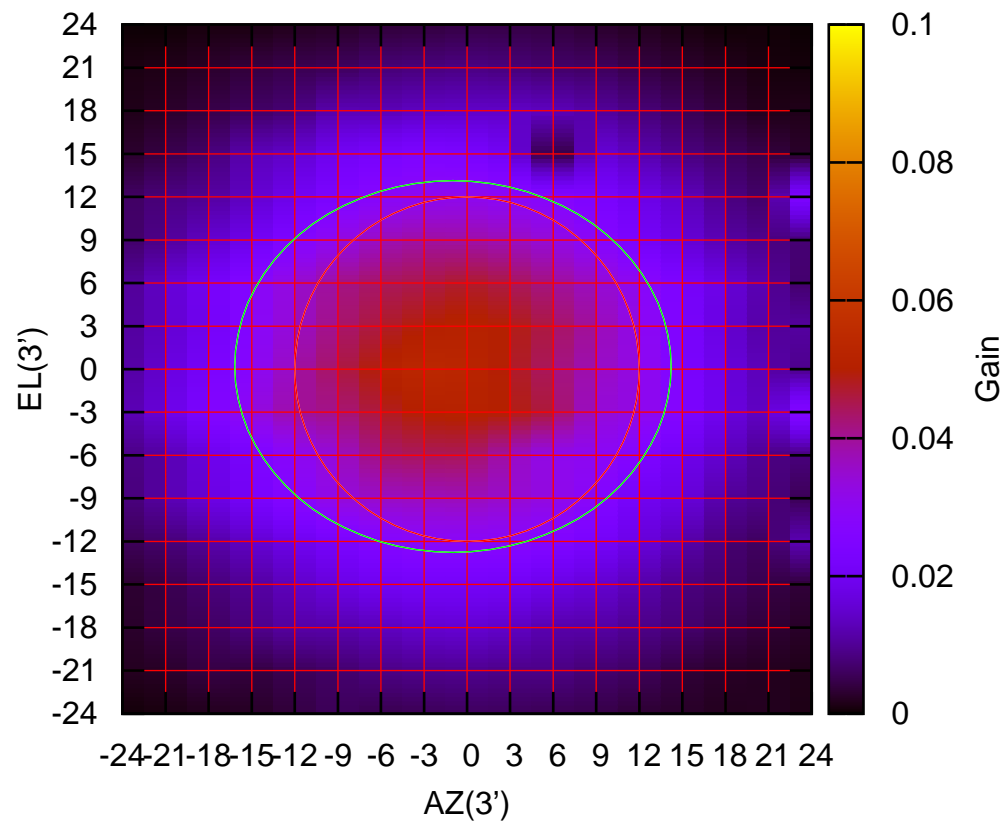
1170 MHz.



W02-130 ELOFF= 0.2' ELBEAM= 28.5'

W02-175 AZOFF= -1.0' AZBEAM= 30.4'

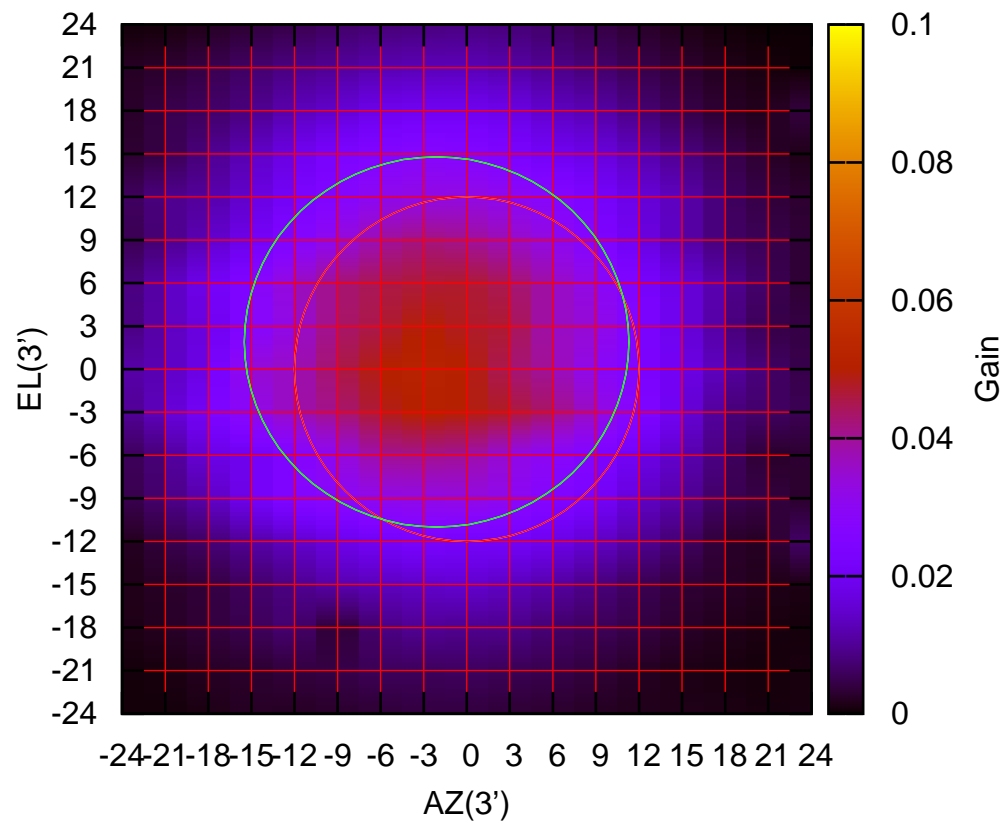
1170 MHz.



W02-175 ELOFF= 0.2' ELBEAM= 25.9'

W03-130 AZOFF= -2.1' AZBEAM= 26.8'

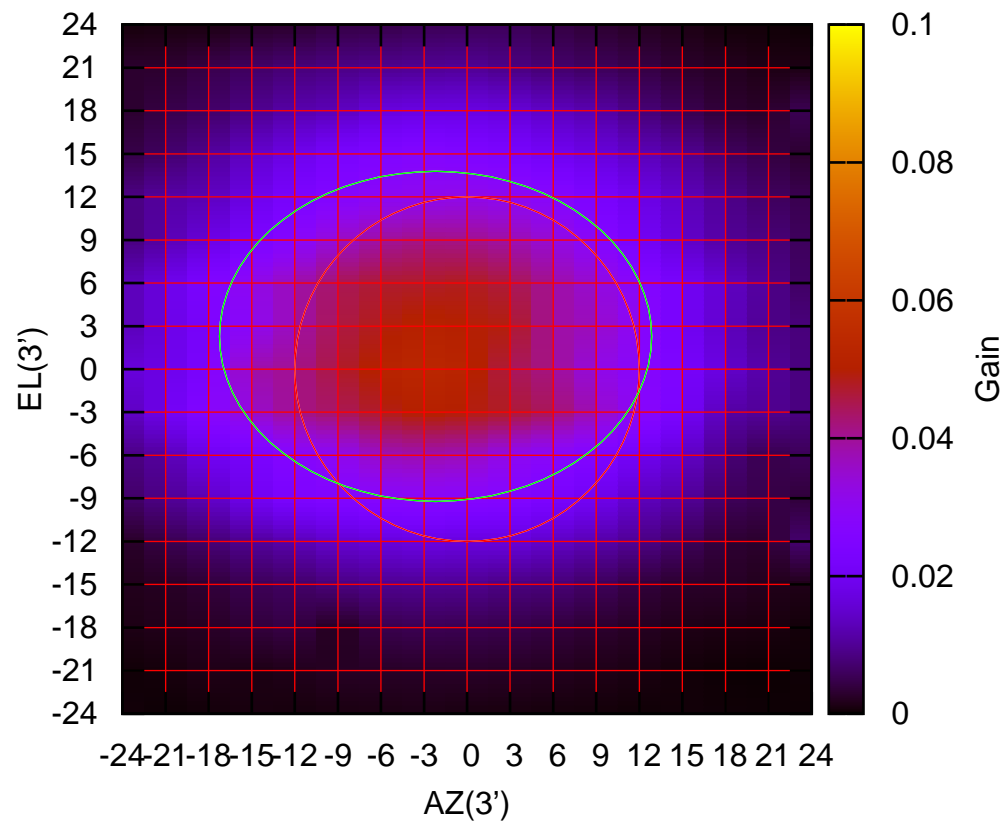
1170 MHz.



W03-130 ELOFF= 1.9' ELBEAM= 25.8'

W03-175 AZOFF= -2.2' AZBEAM= 30.1'

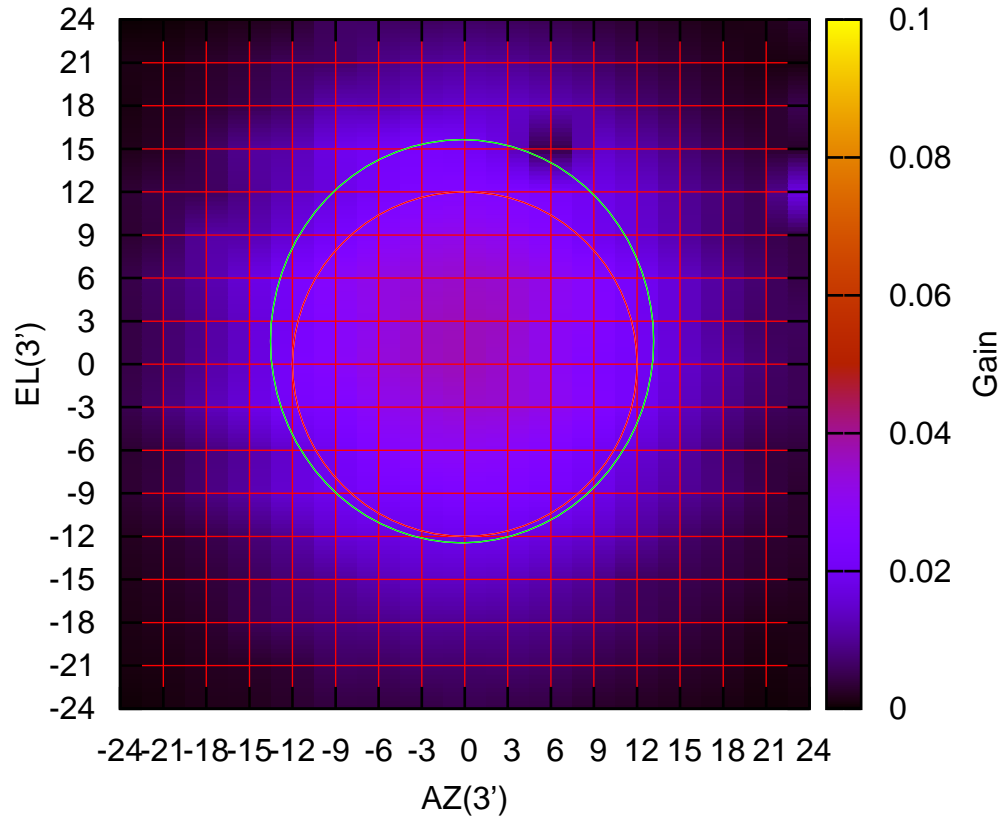
1170 MHz.



W03-175 ELOFF= 2.3' ELBEAM= 23.0'

W04-130 AZOFF= -0.2' AZBEAM= 26.7'

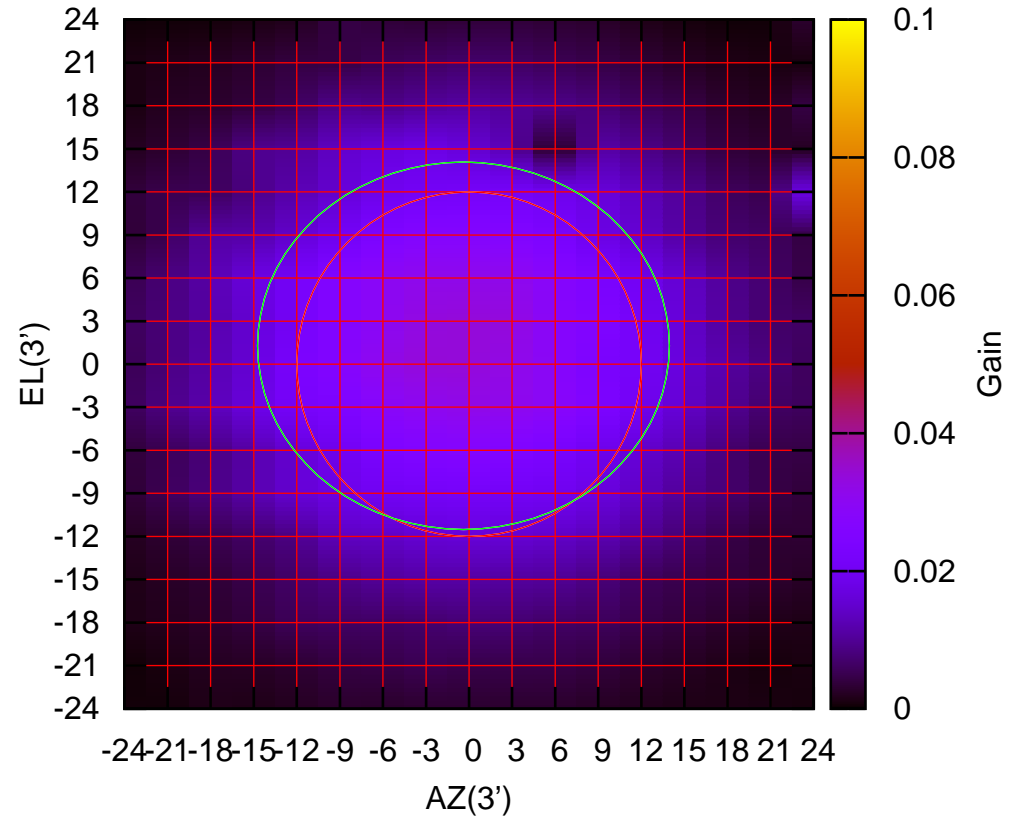
1170 MHz.



W04-130 ELOFF= 1.6' ELBEAM= 28.1'

W04-175 AZOFF= -0.4' AZBEAM= 28.7'

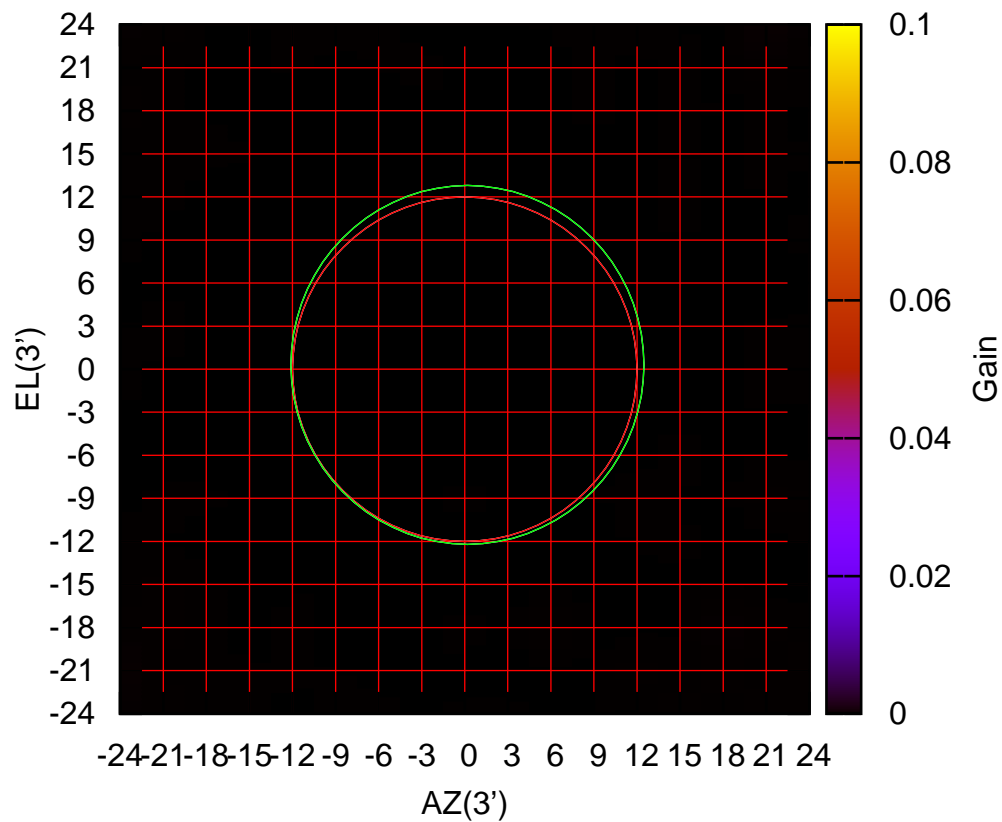
1170 MHz.



W04-175 ELOFF= 1.3' ELBEAM= 25.6'

W05-130 AZOFF= 0.2' AZBEAM= 24.6'

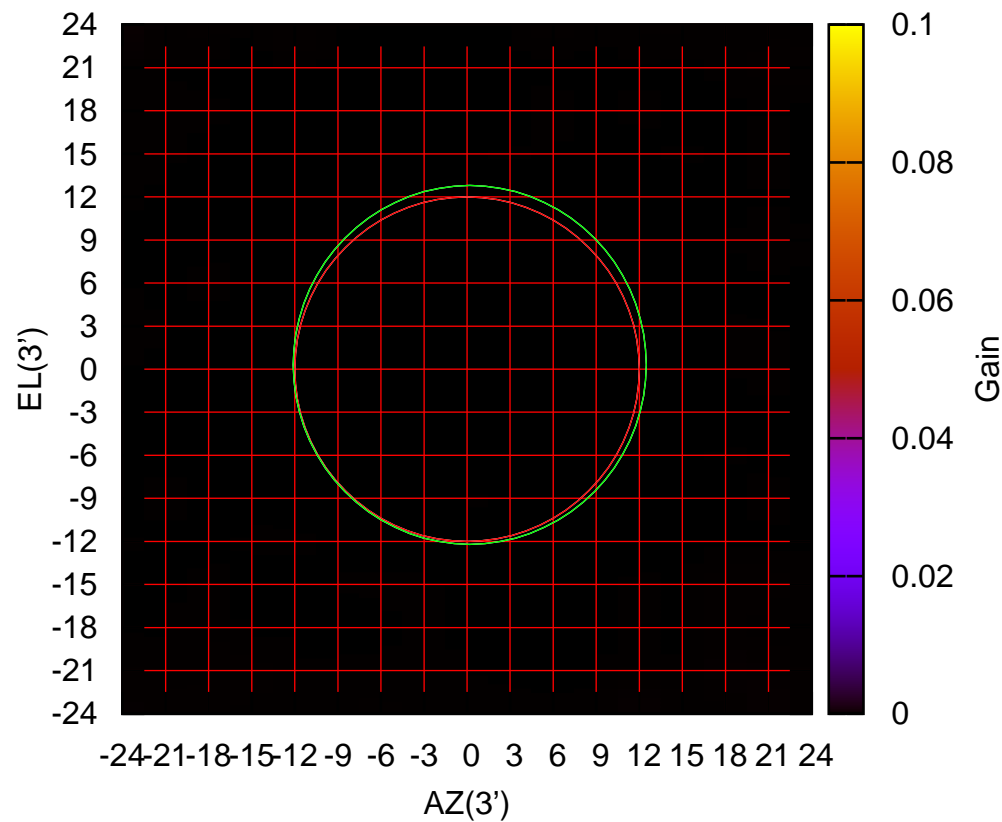
1170 MHz.



W05-130 ELOFF= 0.3' ELBEAM= 25.0'

W05-175 AZOFF= 0.2' AZBEAM= 24.6'

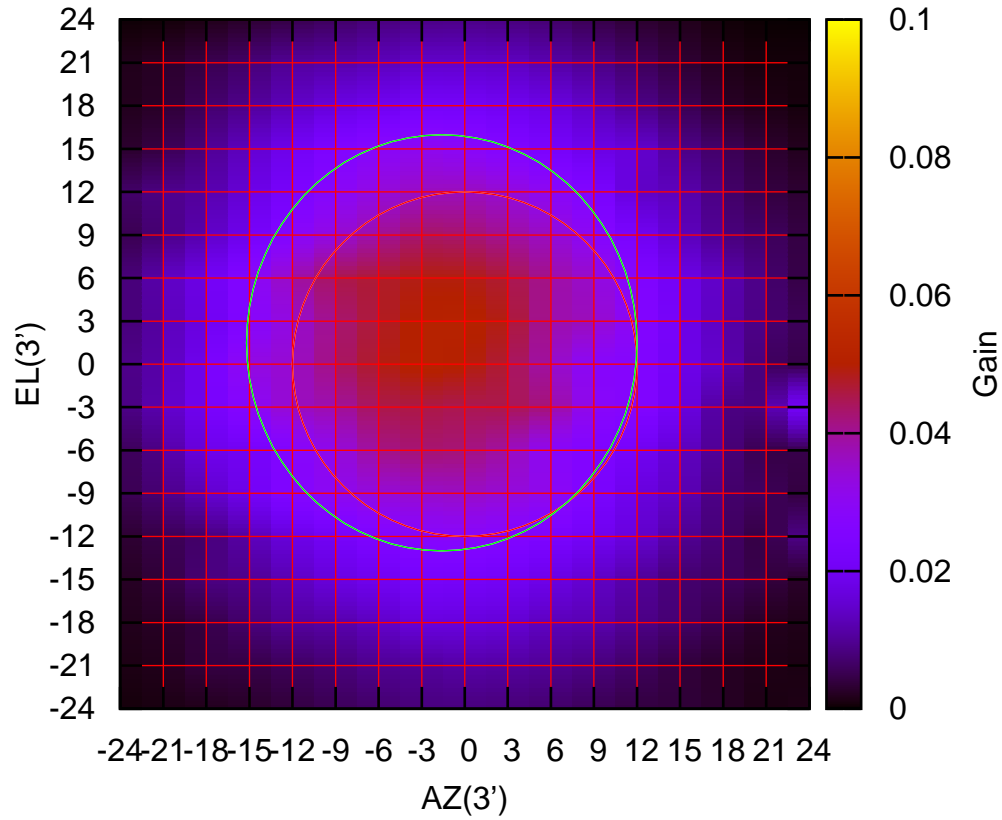
1170 MHz.



W05-175 ELOFF= 0.3' ELBEAM= 25.0'

W06-130 AZOFF= -1.6' AZBEAM= 27.2'

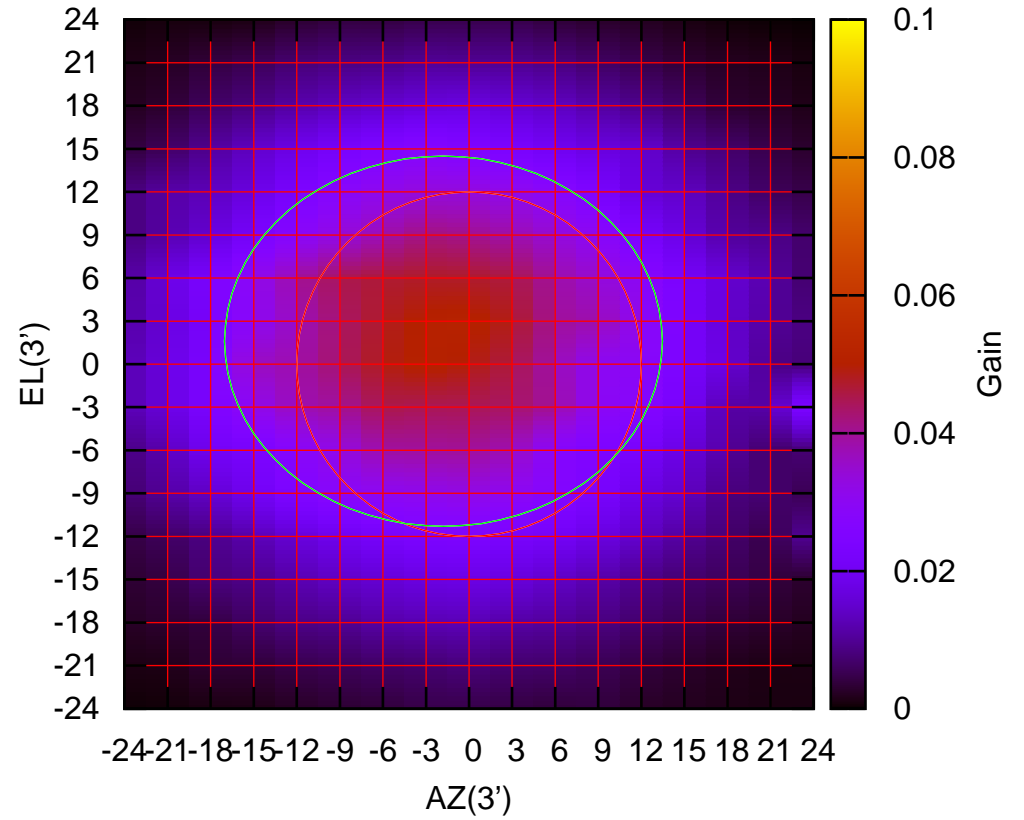
1170 MHz.



W06-130 ELOFF= 1.5' ELBEAM= 29.0'

W06-175 AZOFF= -1.8' AZBEAM= 30.5'

1170 MHz.

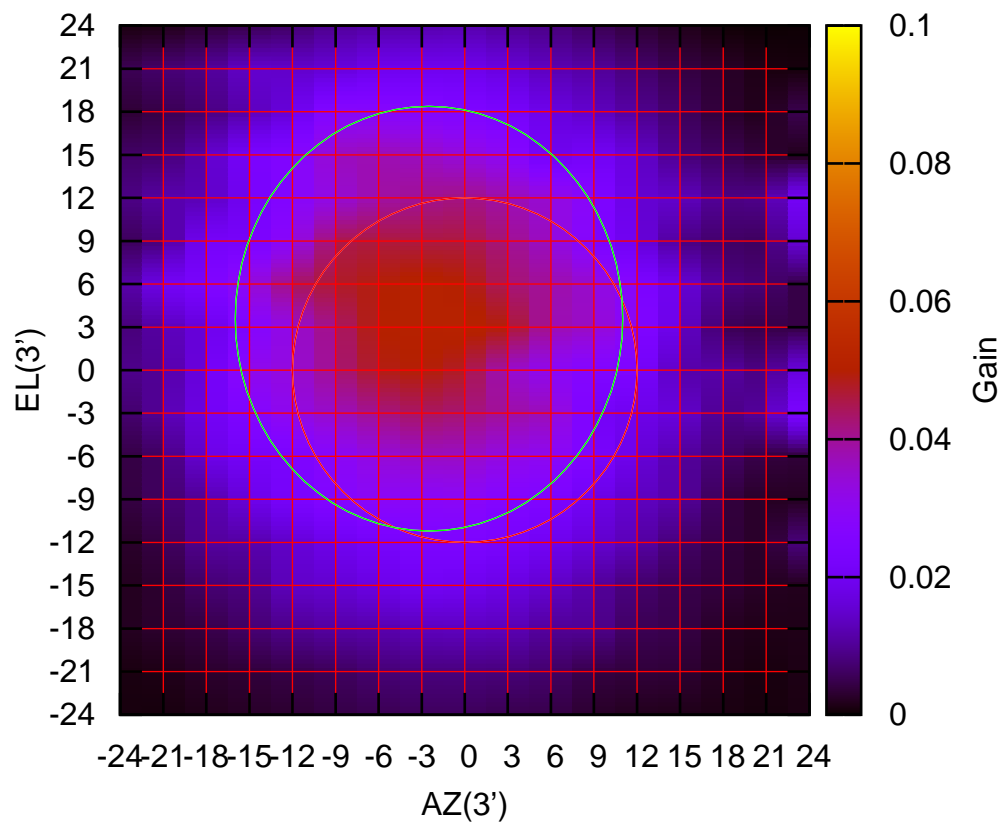


W06-175 ELOFF= 1.6' ELBEAM= 25.8'



E02-130 AZOFF= -2.5' AZBEAM= 27.0'

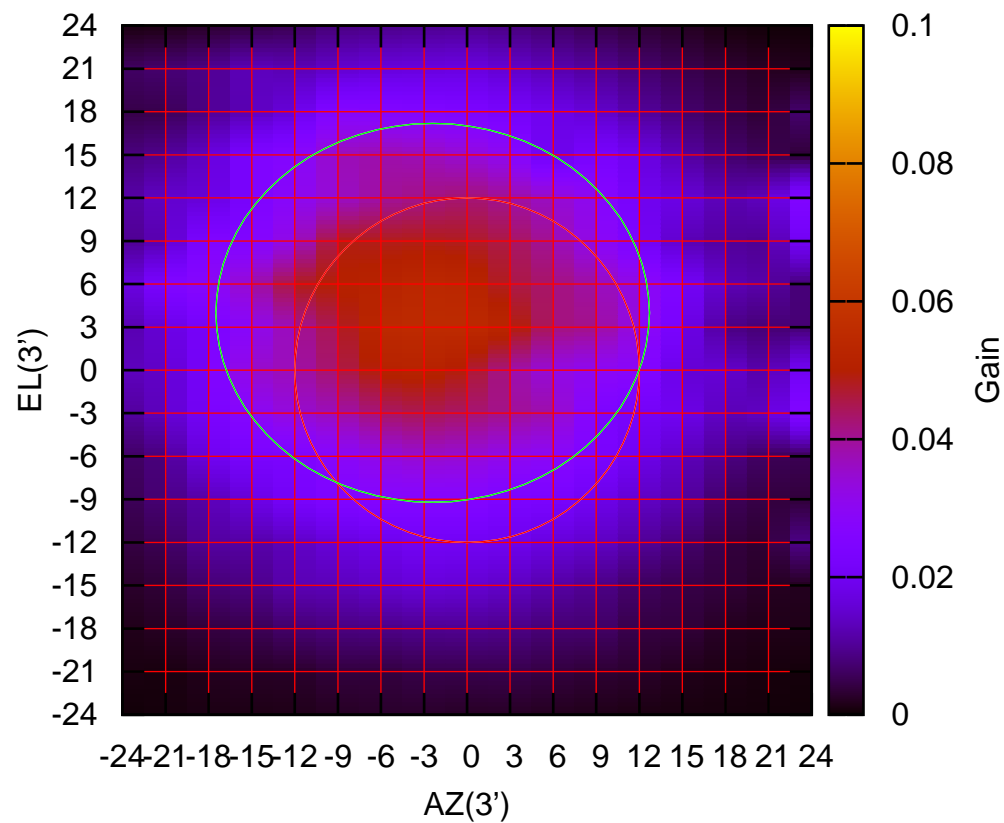
1170 MHz.



E02-130 ELOFF= 3.6' ELBEAM= 29.6'

E02-175 AZOFF= -2.4' AZBEAM= 30.2'

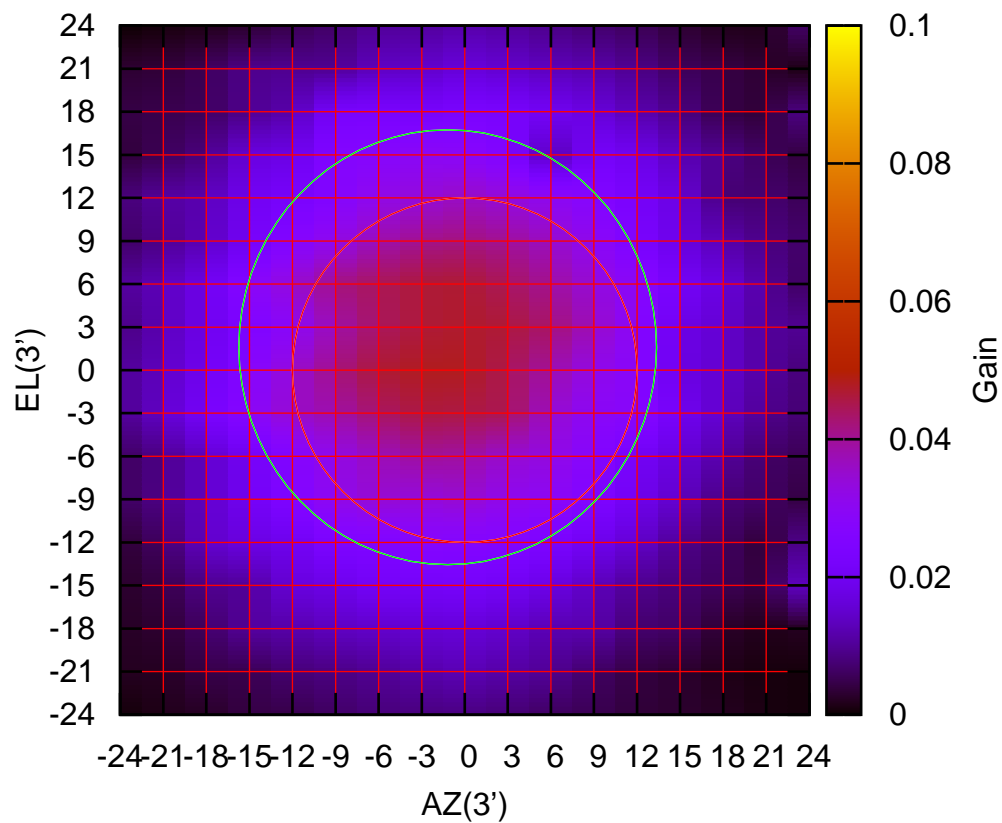
1170 MHz.



E02-175 ELOFF= 4.0' ELBEAM= 26.4'

E03-130 AZOFF= -1.2' AZBEAM= 29.1'

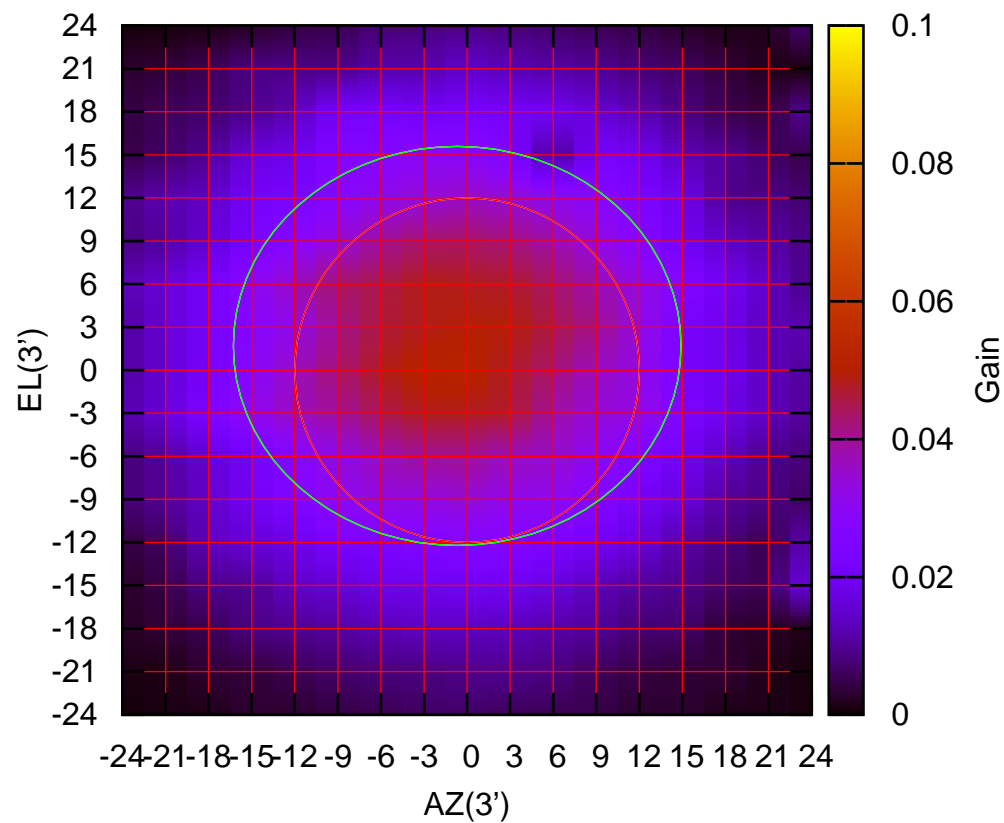
1170 MHz.



E03-130 ELOFF= 1.6' ELBEAM= 30.3'

E03-175 AZOFF= -0.7' AZBEAM= 31.2'

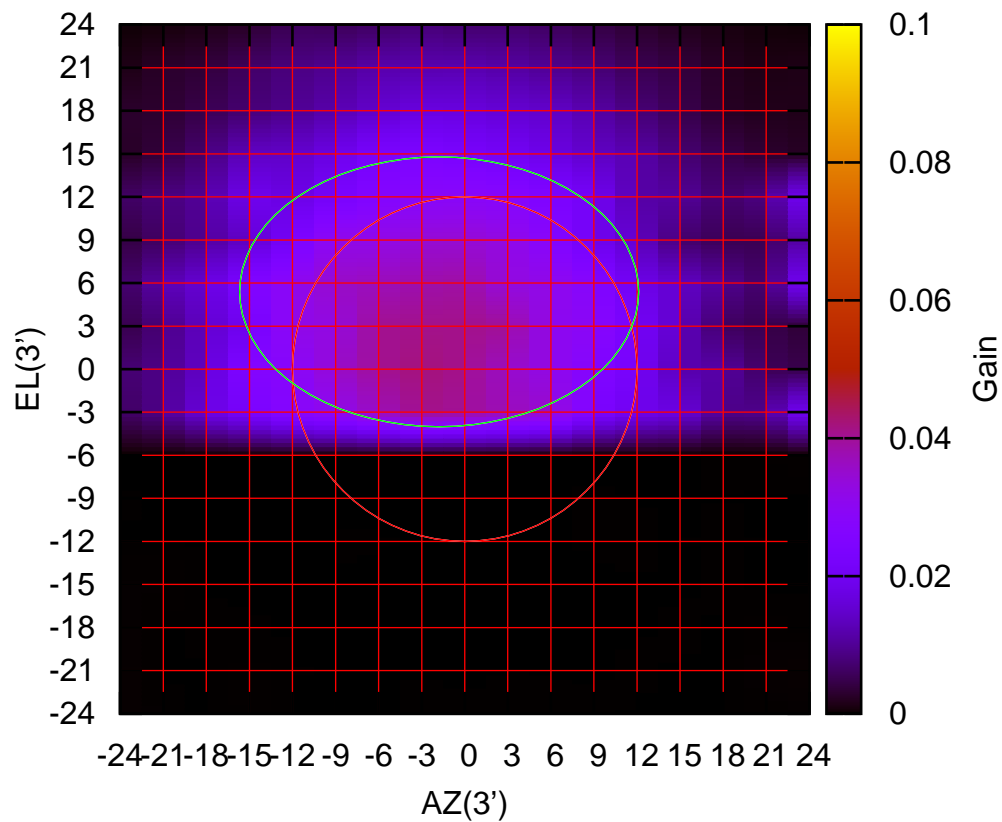
1170 MHz.



E03-175 ELOFF= 1.7' ELBEAM= 27.8'

E04-130 AZOFF= -1.8' AZBEAM= 27.8'

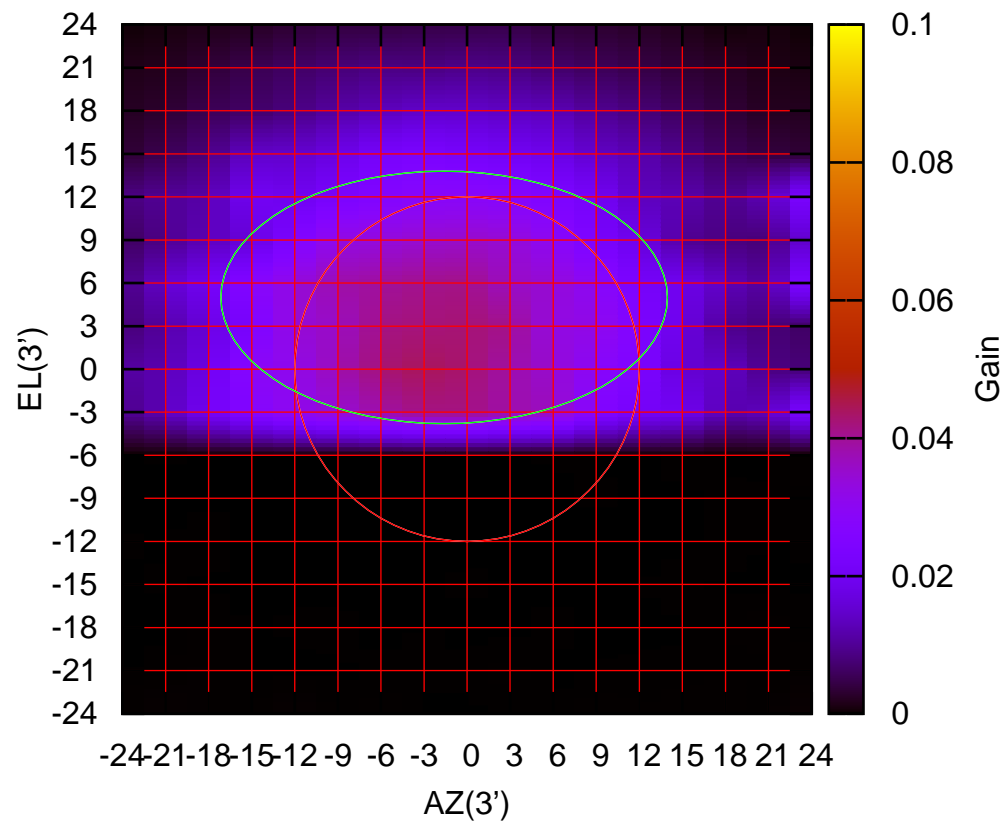
1170 MHz.



E04-130 ELOFF= 5.4' ELBEAM= 18.8'

E04-175 AZOFF= -1.6' AZBEAM= 31.1'

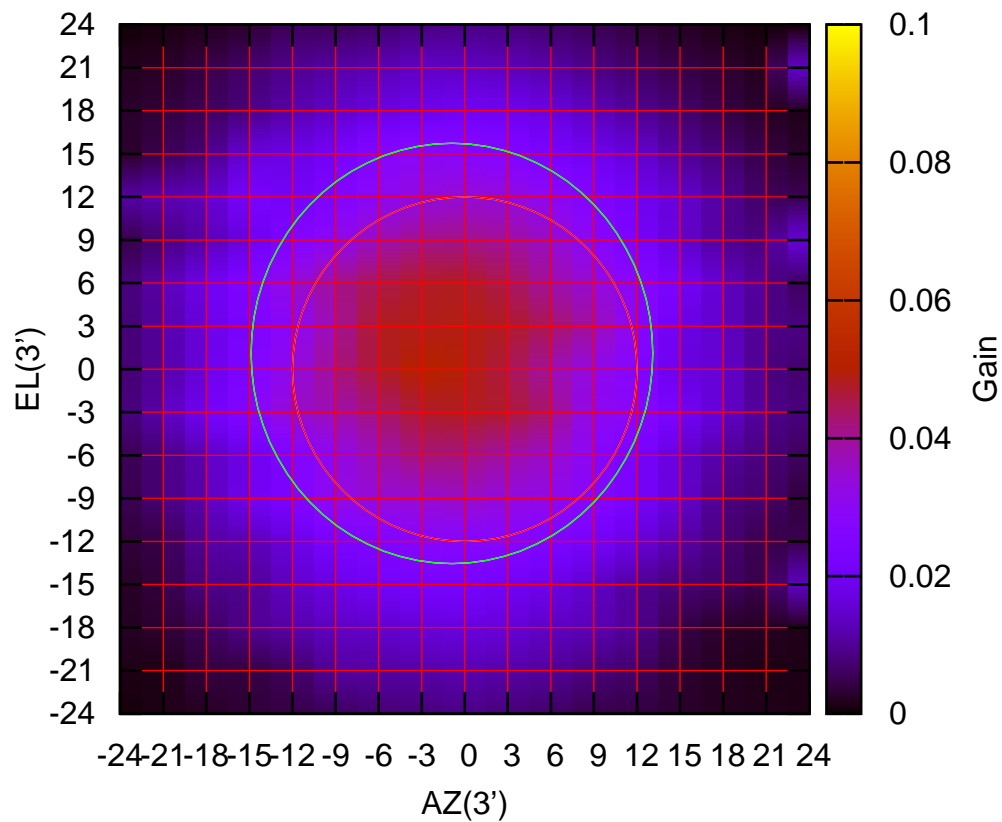
1170 MHz.



E04-175 ELOFF= 5.0' ELBEAM= 17.6'

E05-130 AZOFF= -0.9' AZBEAM= 28.0'

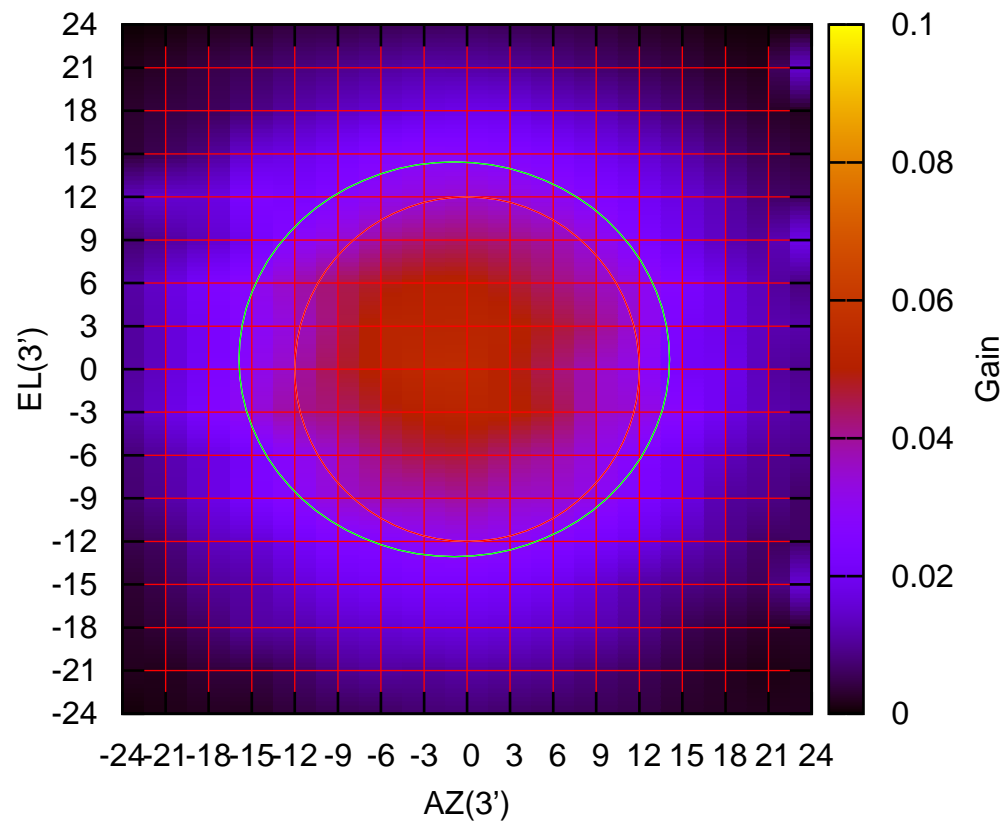
1170 MHz.



E05-130 ELOFF= 1.1' ELBEAM= 29.3'

E05-175 AZOFF= -0.9' AZBEAM= 30.0'

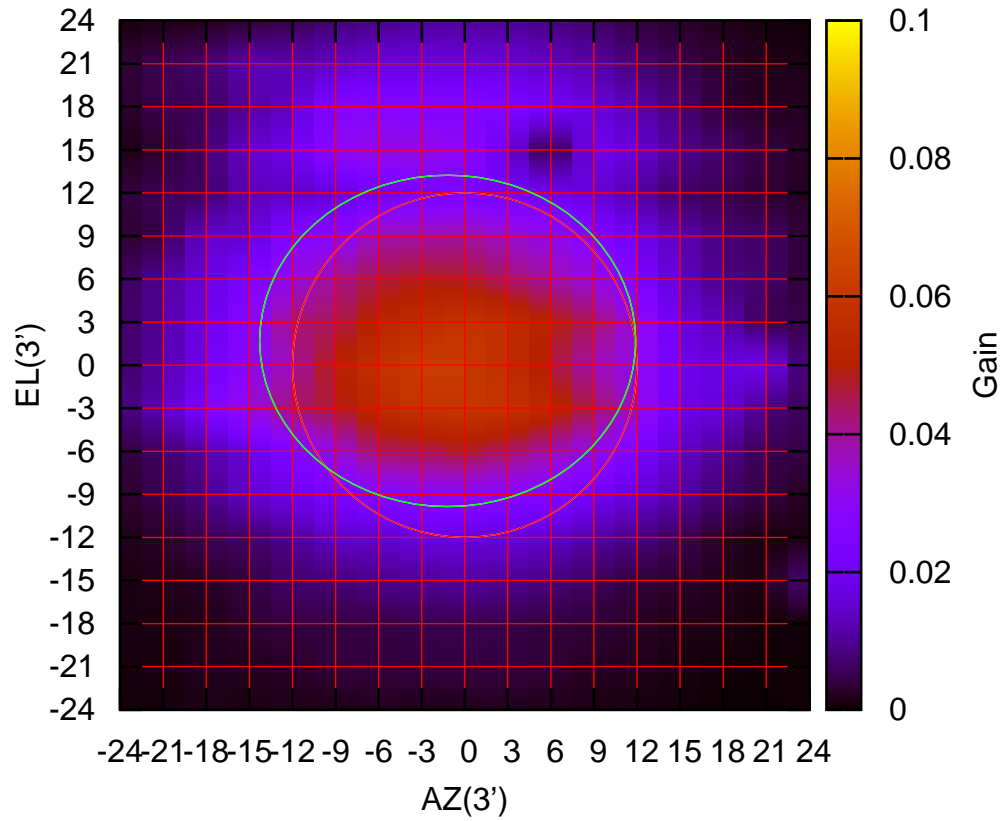
1170 MHz.



E05-175 ELOFF= 0.7' ELBEAM= 27.5'

E06-130 AZOFF= -1.2' AZBEAM= 26.2'

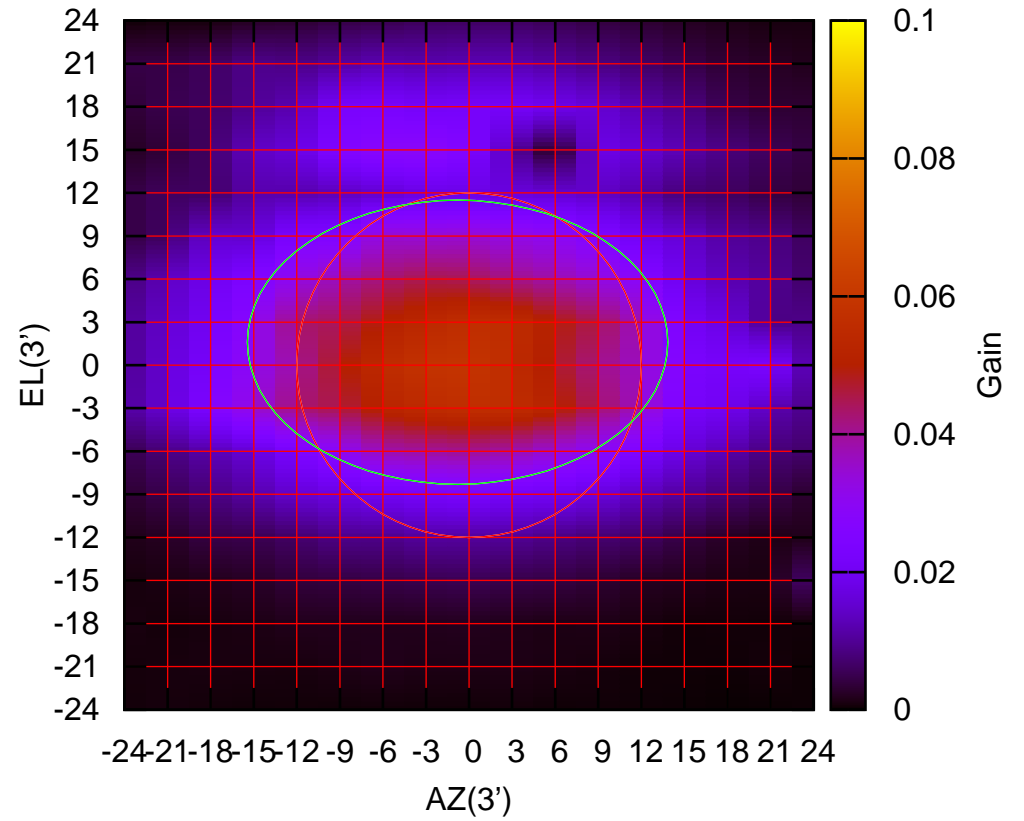
1170 MHz.



E06-130 ELOFF= 1.7' ELBEAM= 23.1'

E06-175 AZOFF= -0.8' AZBEAM= 29.3'

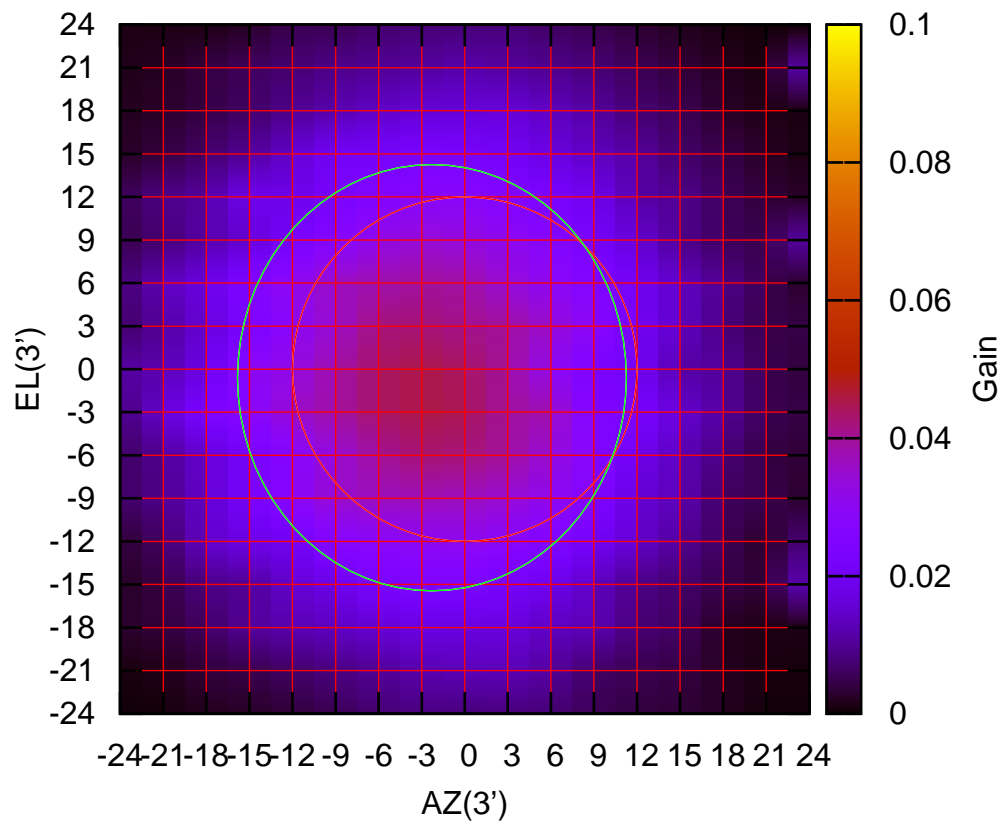
1170 MHz.



E06-175 ELOFF= 1.6' ELBEAM= 19.8'

S01-130 AZOFF= -2.3' AZBEAM= 27.1'

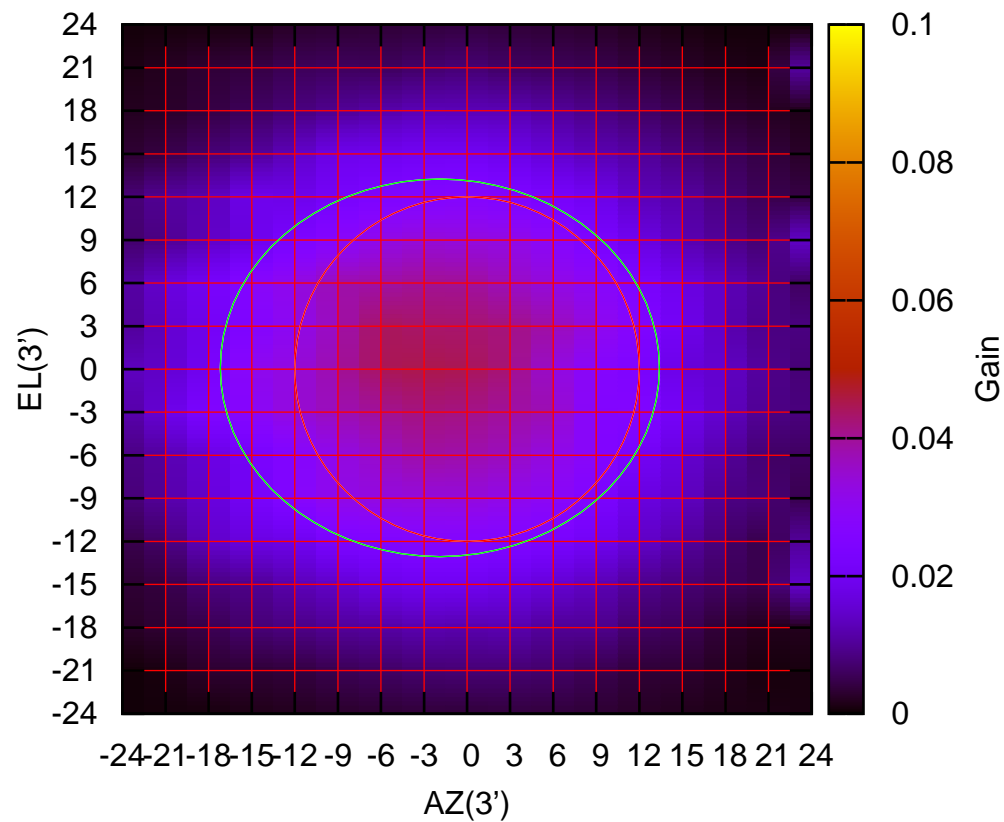
1170 MHz.



S01-130 ELOFF= -0.6' ELBEAM= 29.7'

S01-175 AZOFF= -1.9' AZBEAM= 30.6'

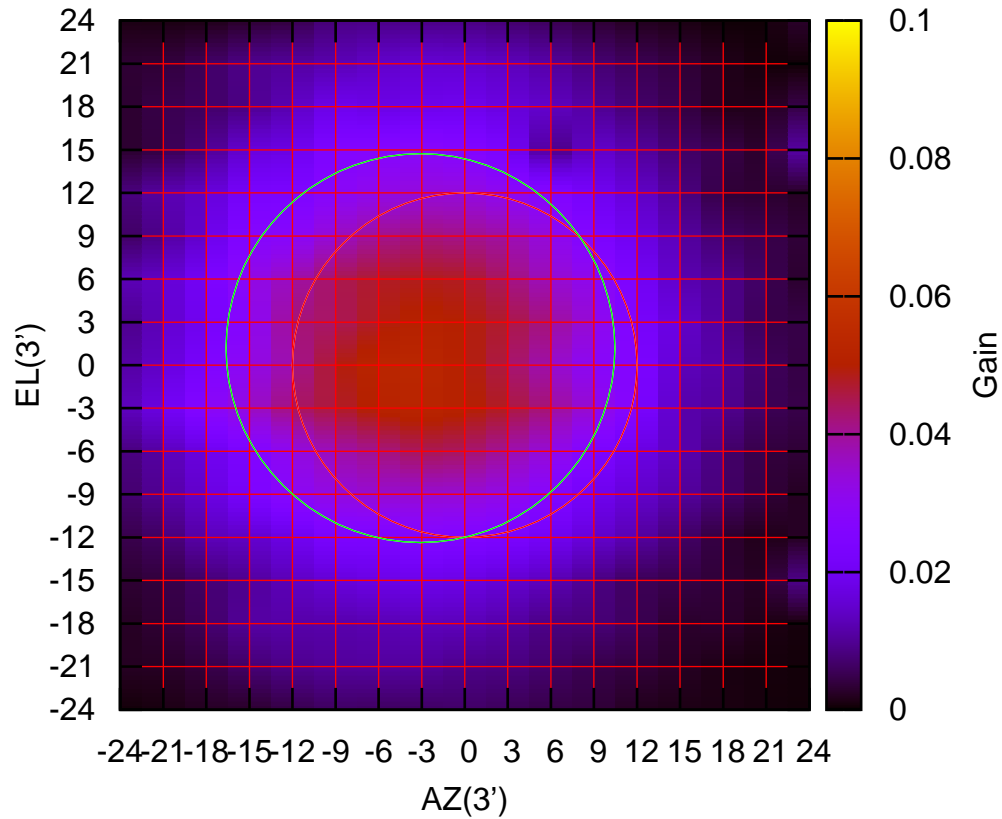
1170 MHz.



S01-175 ELOFF= 0.1' ELBEAM= 26.3'

S02-130 AZOFF= -3.1' AZBEAM= 27.1'

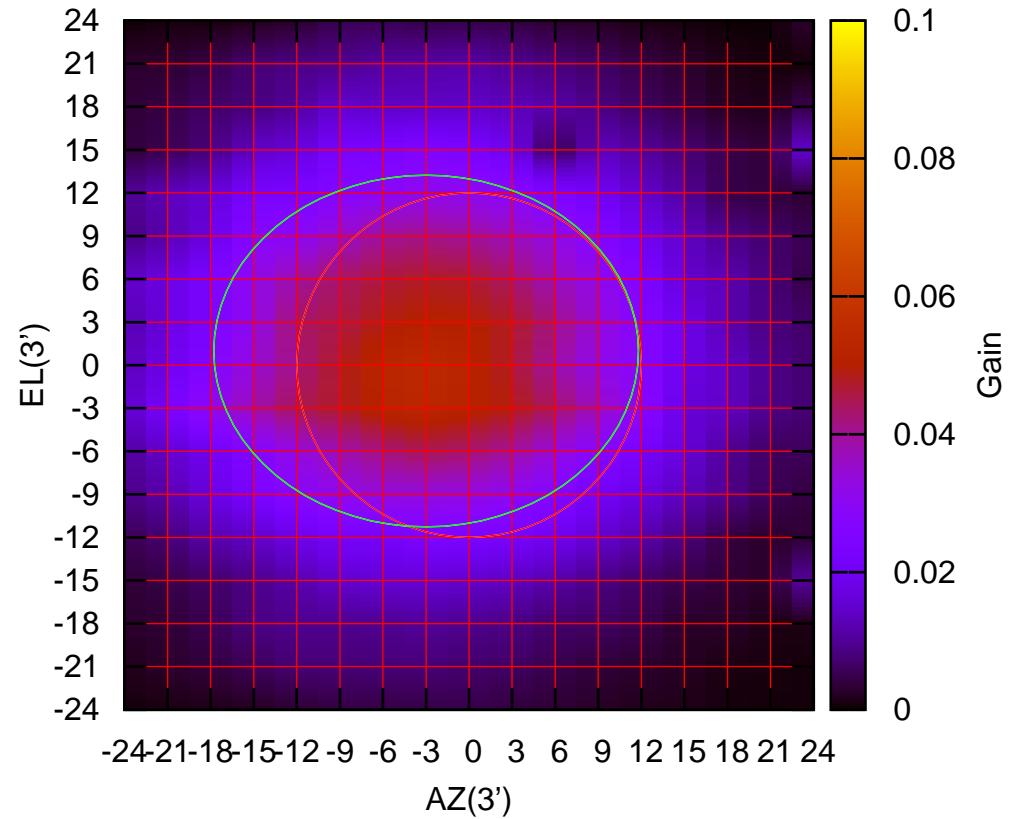
1170 MHz.



S02-130 ELOFF= 1.2' ELBEAM= 27.1'

S02-175 AZOFF= -3.0' AZBEAM= 29.6'

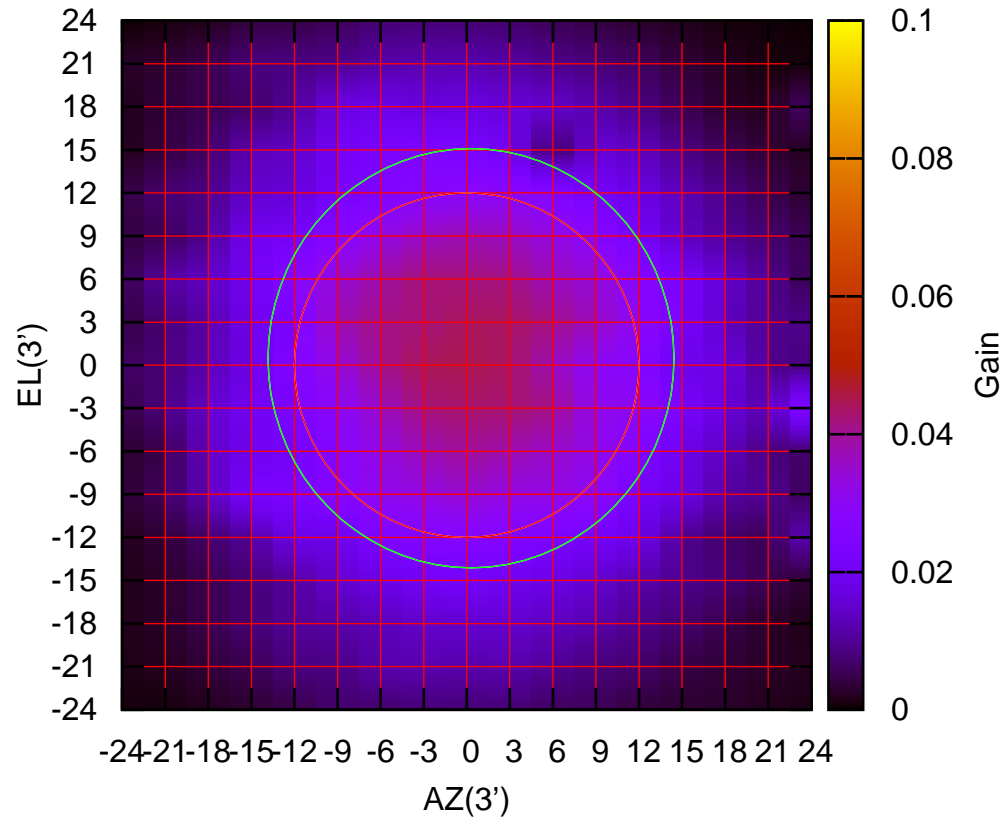
1170 MHz.



S02-175 ELOFF= 1.0' ELBEAM= 24.5'

S03-130 AZOFF= 0.3' AZBEAM= 28.3'

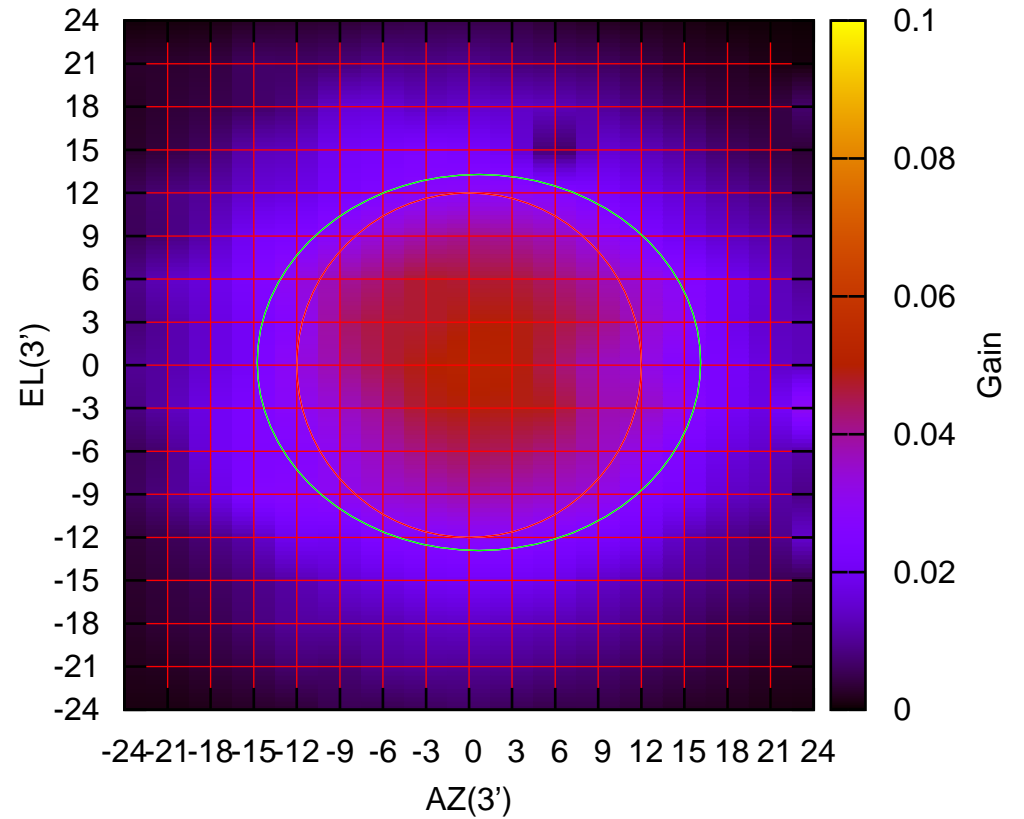
1170 MHz.



S03-130 ELOFF= 0.5' ELBEAM= 29.2'

S03-175 AZOFF= 0.7' AZBEAM= 30.9'

1170 MHz.

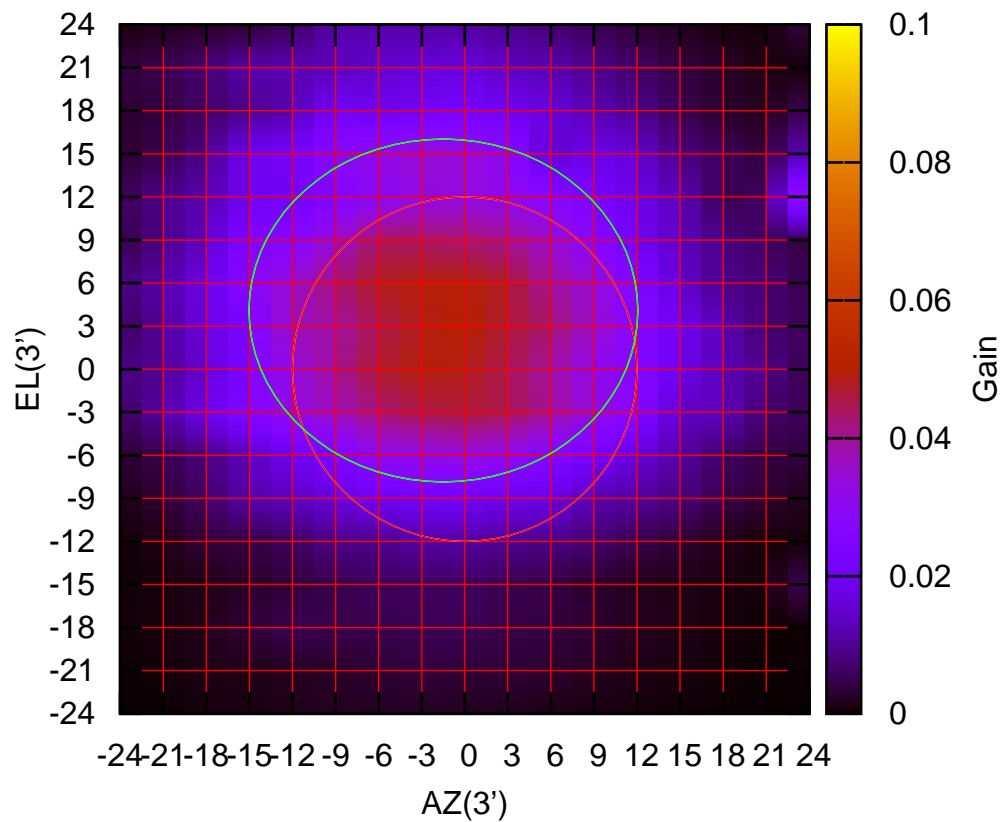


S03-175 ELOFF= 0.2' ELBEAM= 26.2'



S04-130 AZOFF= -1.5' AZBEAM= 27.1'

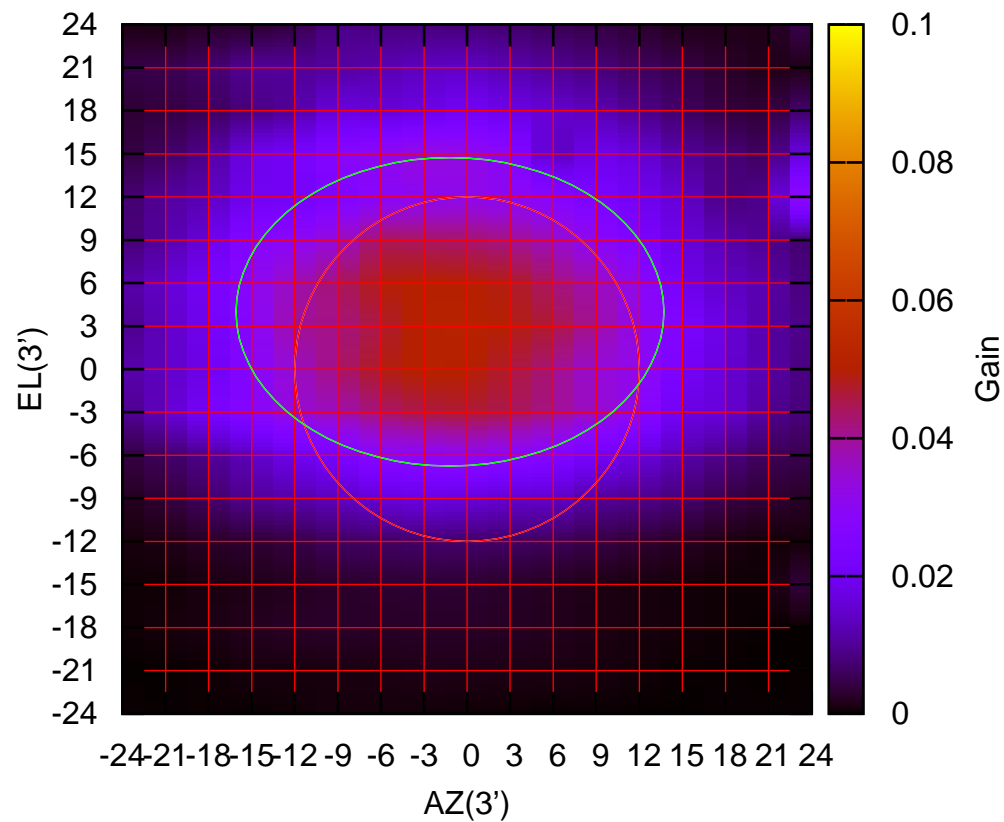
1170 MHz.



S04-130 ELOFF= 4.1' ELBEAM= 23.9'

S04-175 AZOFF= -1.2' AZBEAM= 29.8'

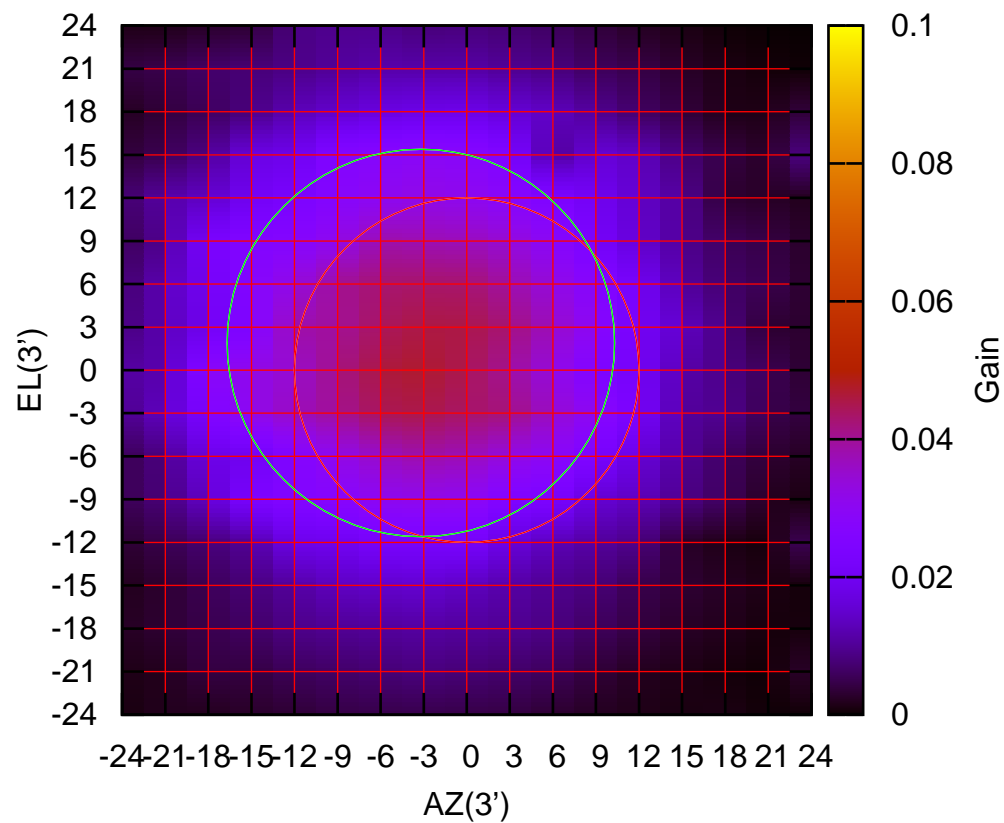
1170 MHz.



S04-175 ELOFF= 4.0' ELBEAM= 21.5'

S06-130 AZOFF= -3.2' AZBEAM= 27.0'

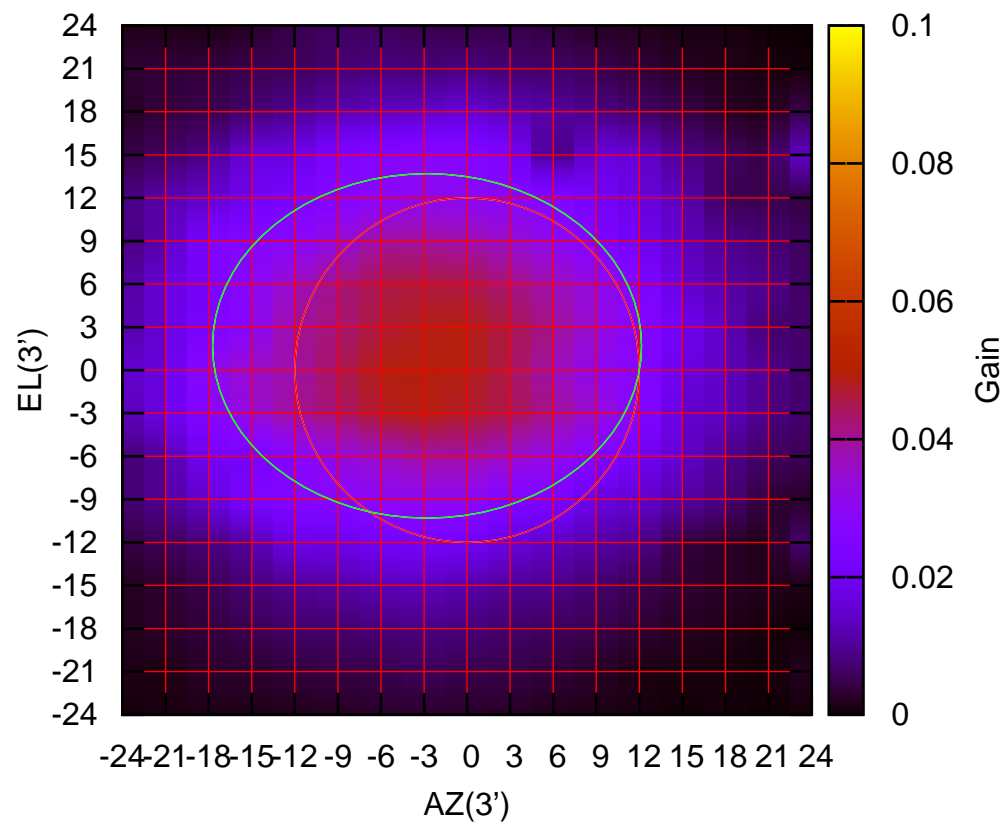
1170 MHz.



S06-130 ELOFF= 1.9' ELBEAM= 27.0'

S06-175 AZOFF= -2.8' AZBEAM= 29.9'

1170 MHz.



S06-175 ELOFF= 1.7' ELBEAM= 24.0'