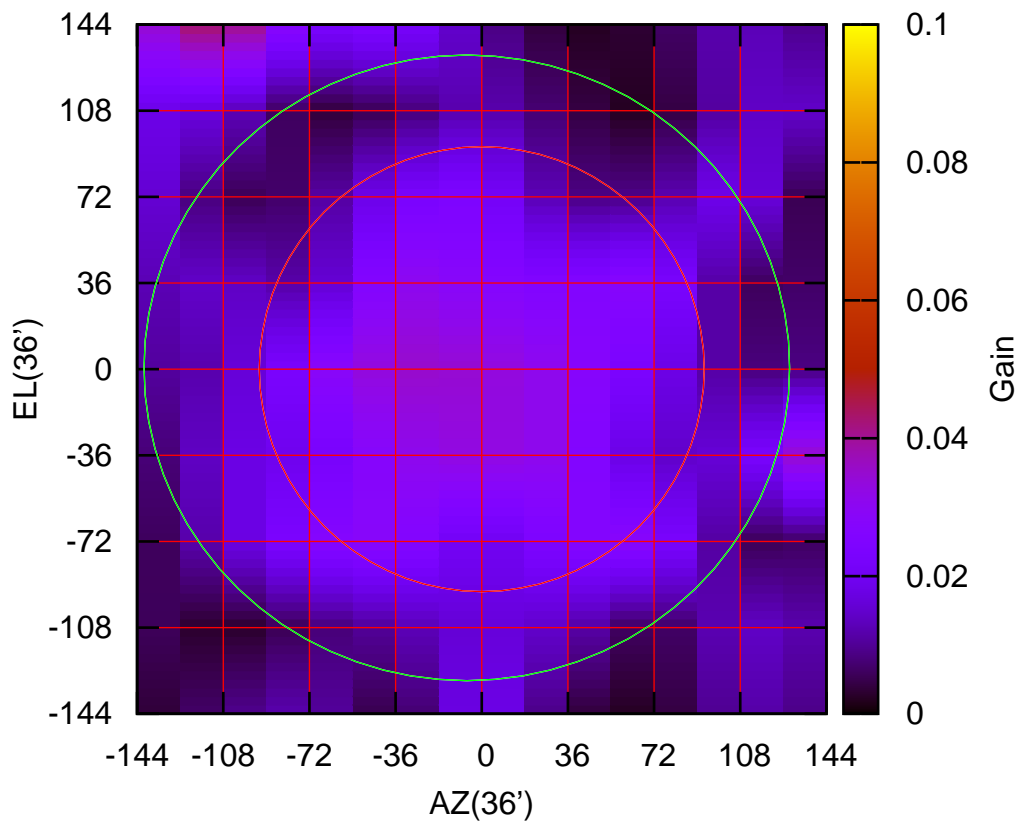


C00-130 AZOFF= -6.3' AZBEAM=269.9'

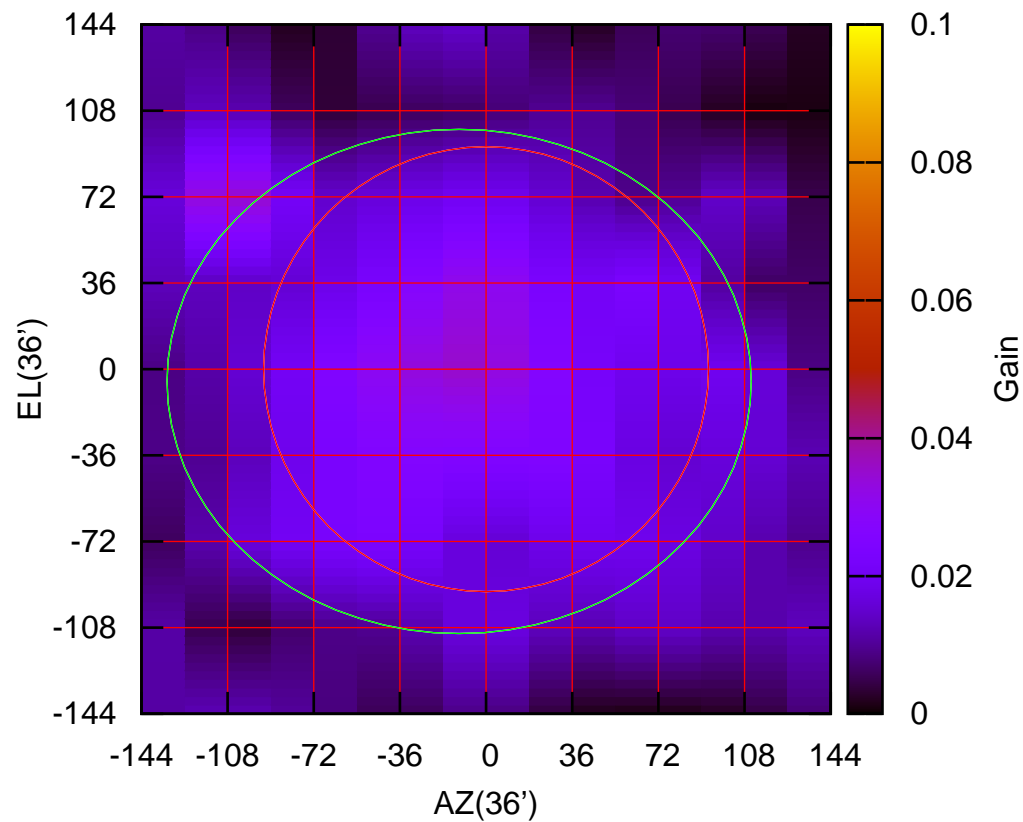
150 MHz.



C00-130 ELOFF= 0.6' ELBEAM=261.5'

C00-175 AZOFF=-11.3' AZBEAM=244.1'

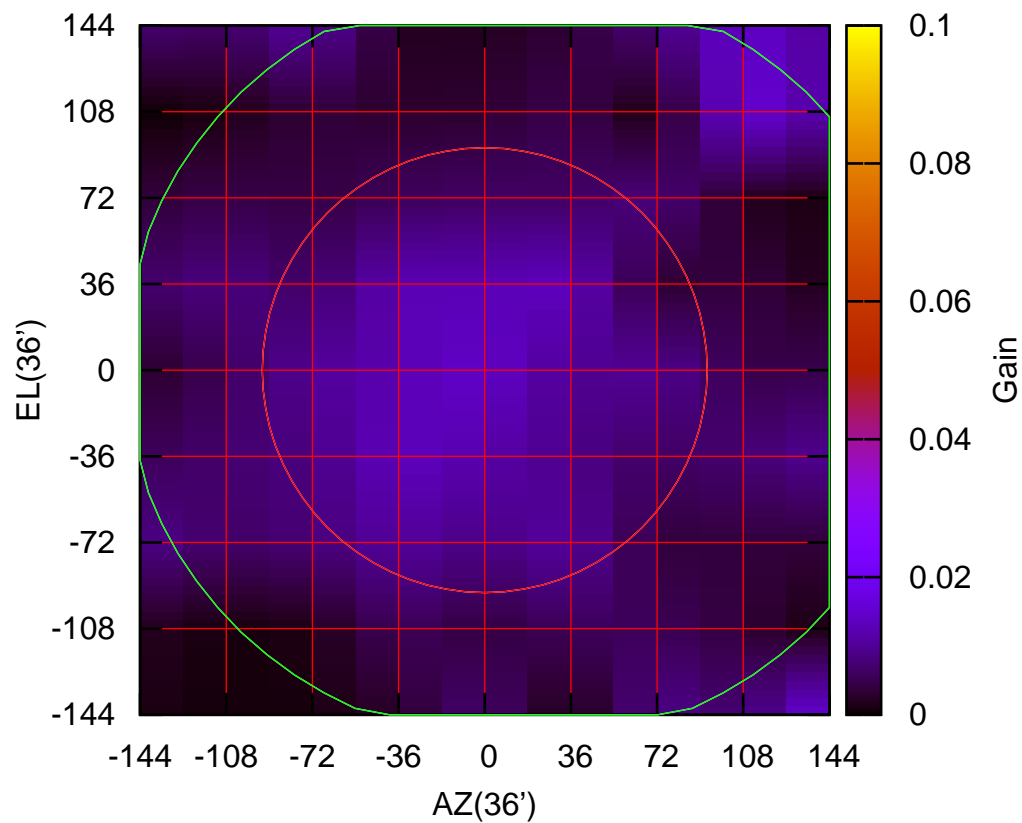
150 MHz.



C00-175 ELOFF= -5.2' ELBEAM=210.8'

C01-130 AZOFF= 16.3' AZBEAM=333.8'

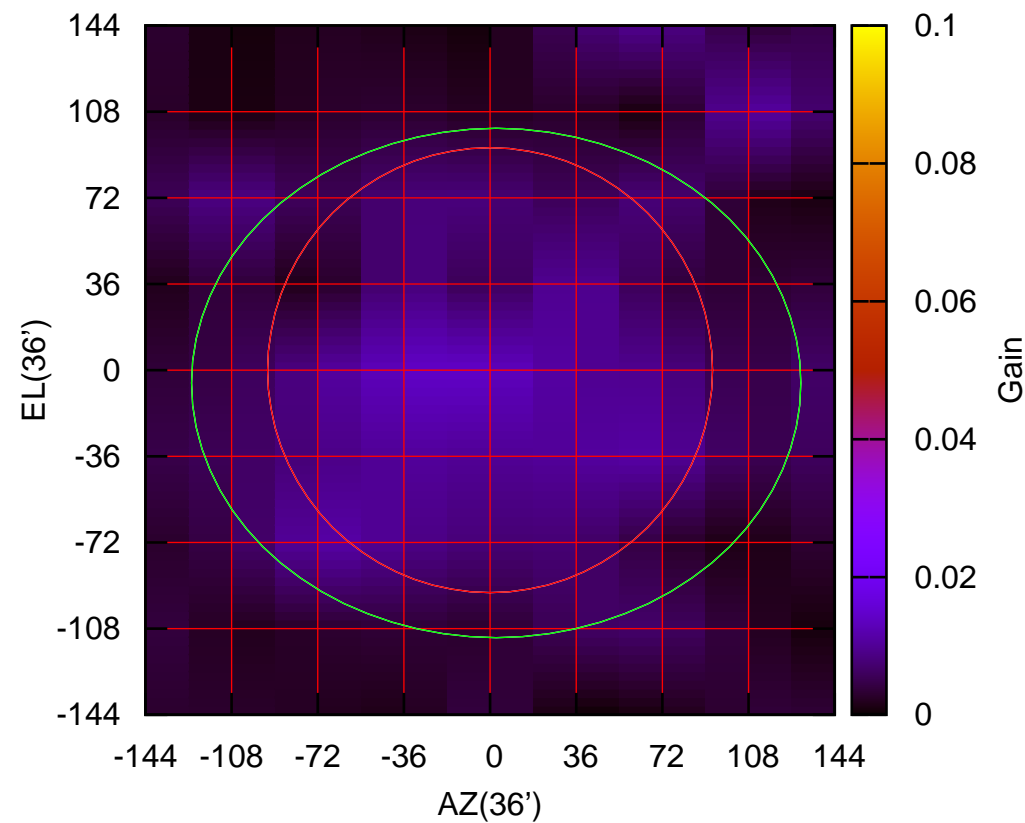
150 MHz.



C01-130 ELOFF= 3.4' ELBEAM=319.3'

C01-175 AZOFF= 2.6' AZBEAM=254.7'

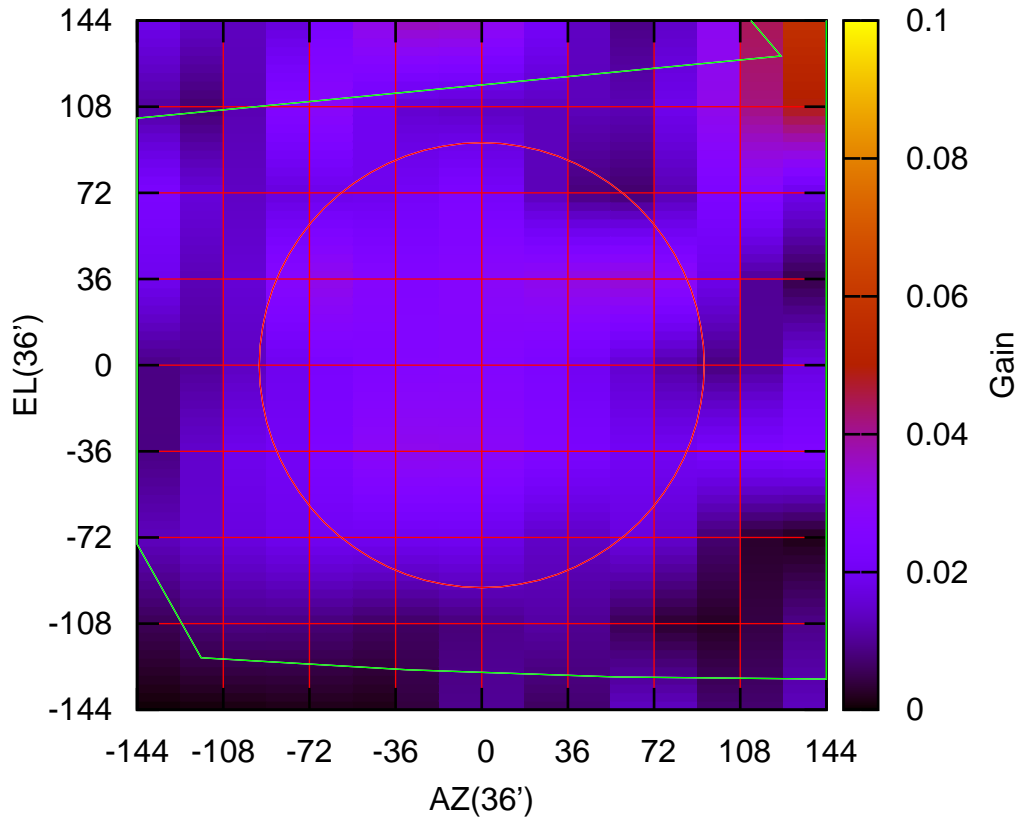
150 MHz.



C01-175 ELOFF= -5.4' ELBEAM=212.9'

C02-130 AZOFF=1099.9' AZBEAM=2018.6'

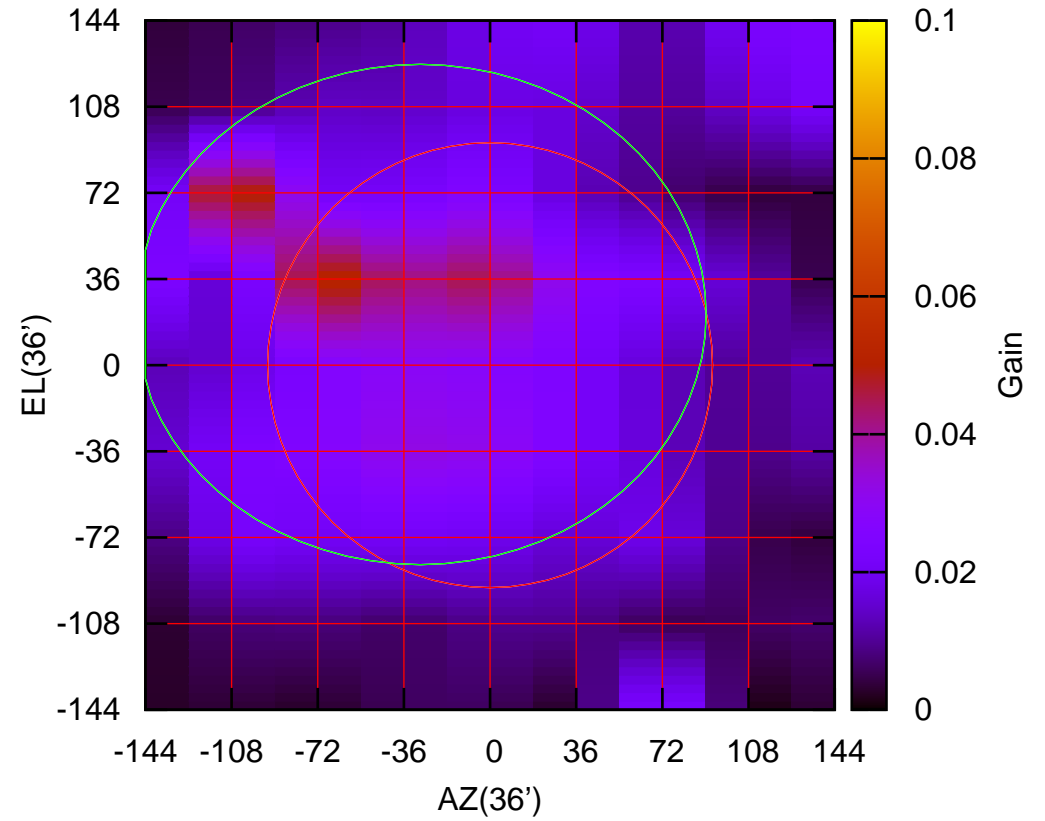
150 MHz.



C02-130 ELOFF=196.9' ELBEAM=523.3'

C02-175 AZOFF=-29.2' AZBEAM=239.0'

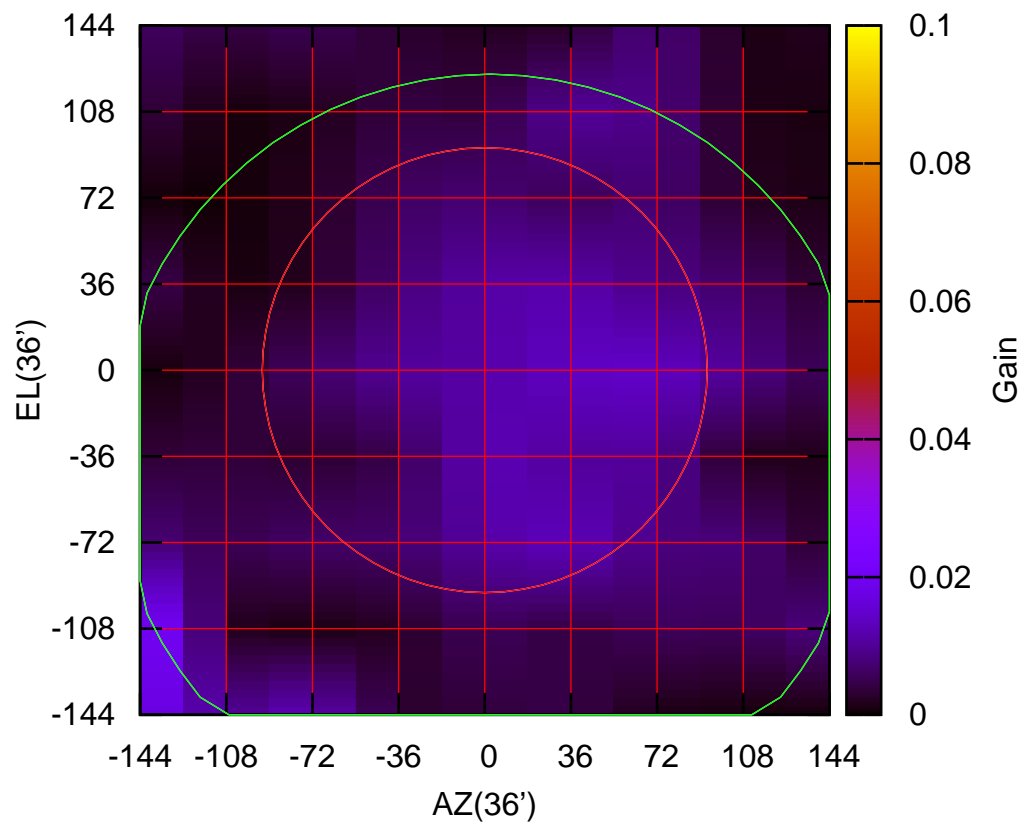
150 MHz.



C02-175 ELOFF= 21.2' ELBEAM=209.1'

C03-130 AZOFF= 2.4' AZBEAM=316.7'

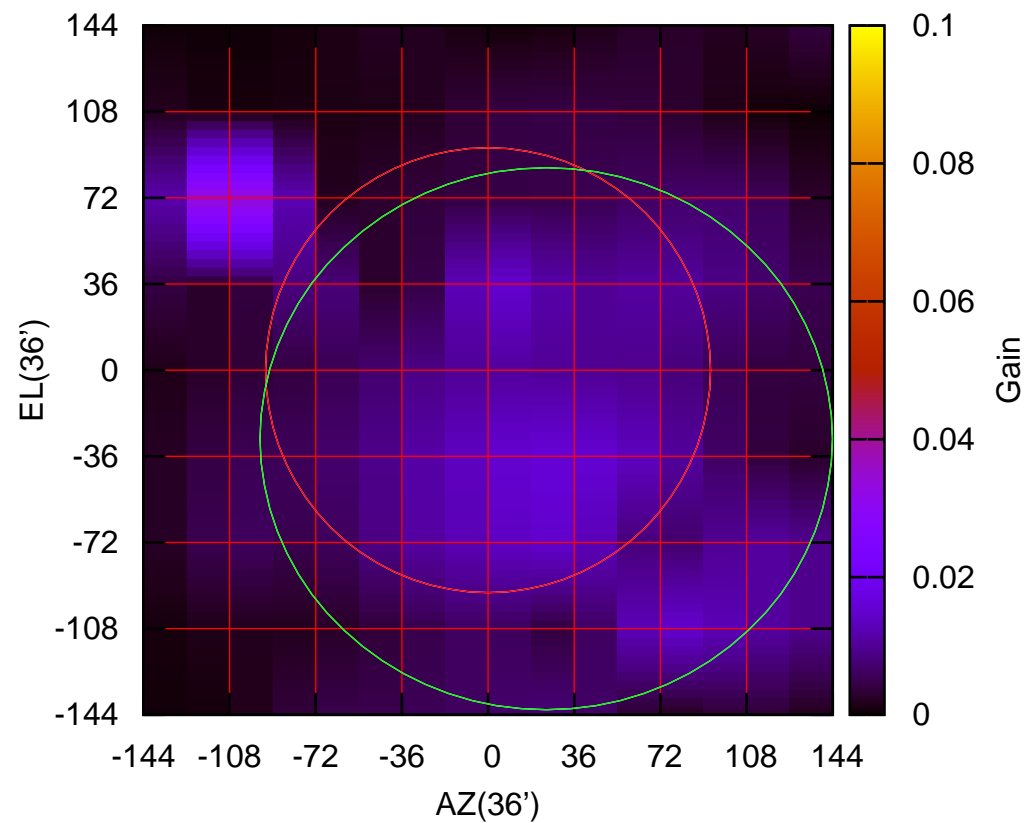
150 MHz.



C03-130 ELOFF=-34.8' ELBEAM=317.0'

C03-175 AZOFF= 24.3' AZBEAM=239.2'

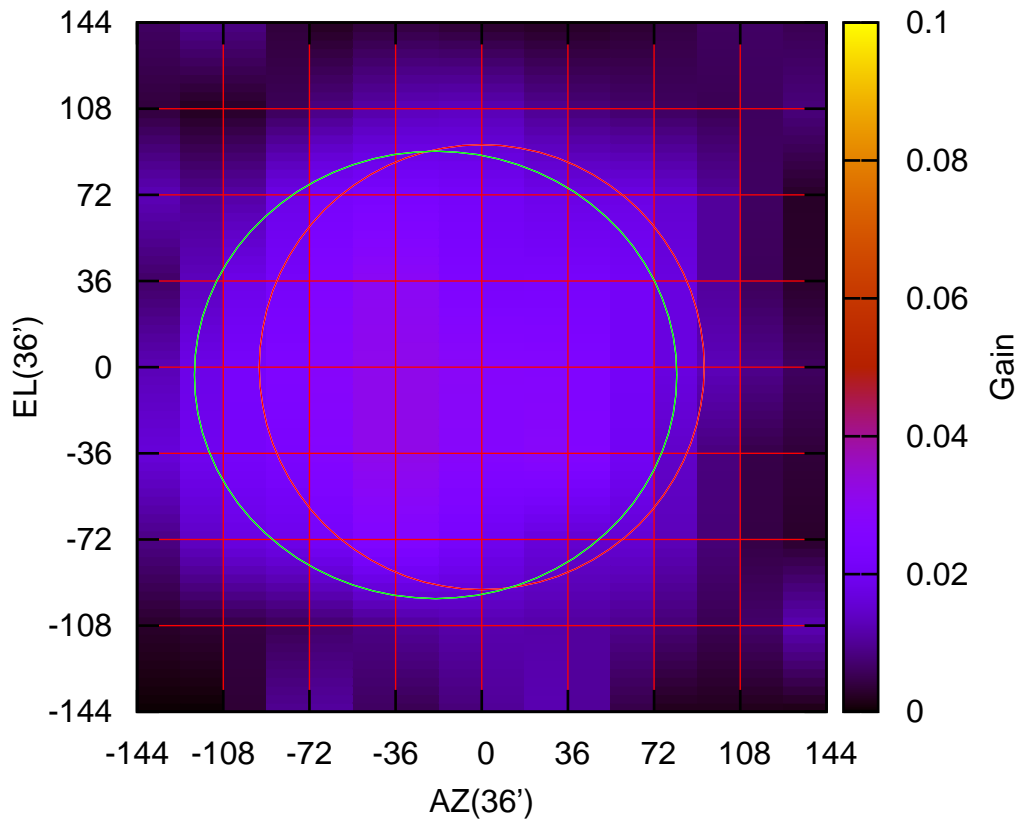
150 MHz.



C03-175 ELOFF=-28.7' ELBEAM=226.6'

C04-130 AZOFF=-19.3' AZBEAM=201.7'

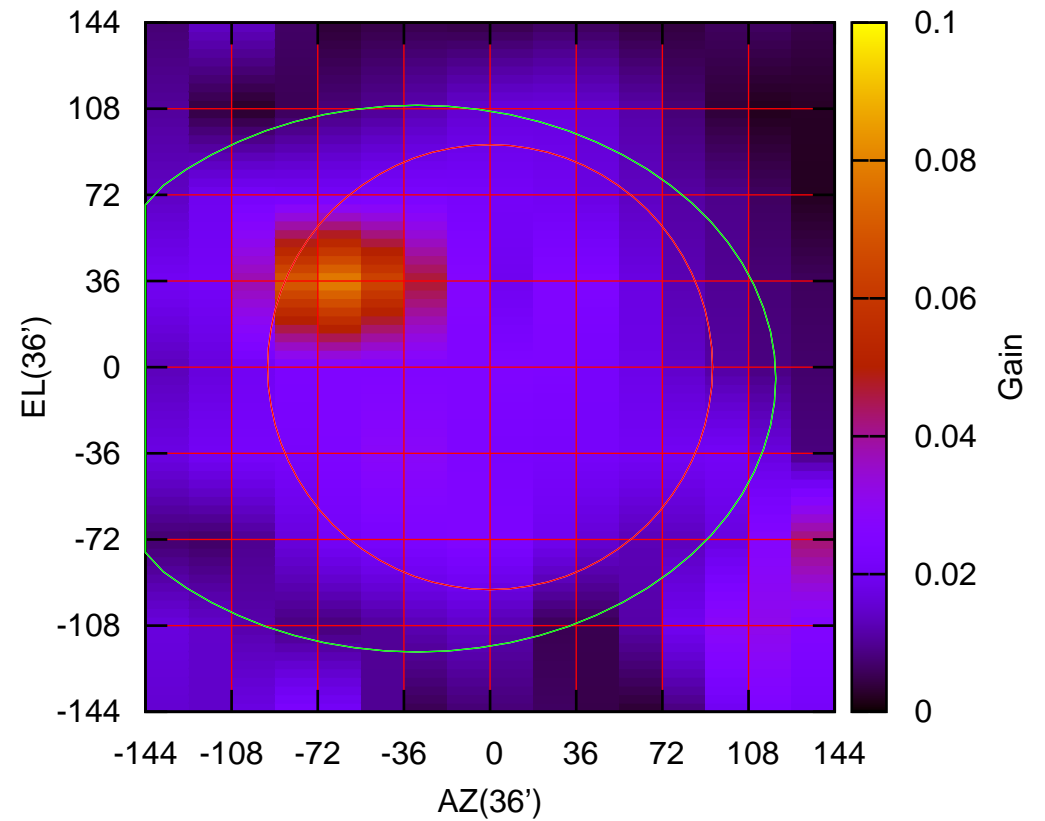
150 MHz.



C04-130 ELOFF= -3.3' ELBEAM=187.0'

C04-175 AZOFF=-30.6' AZBEAM=299.9'

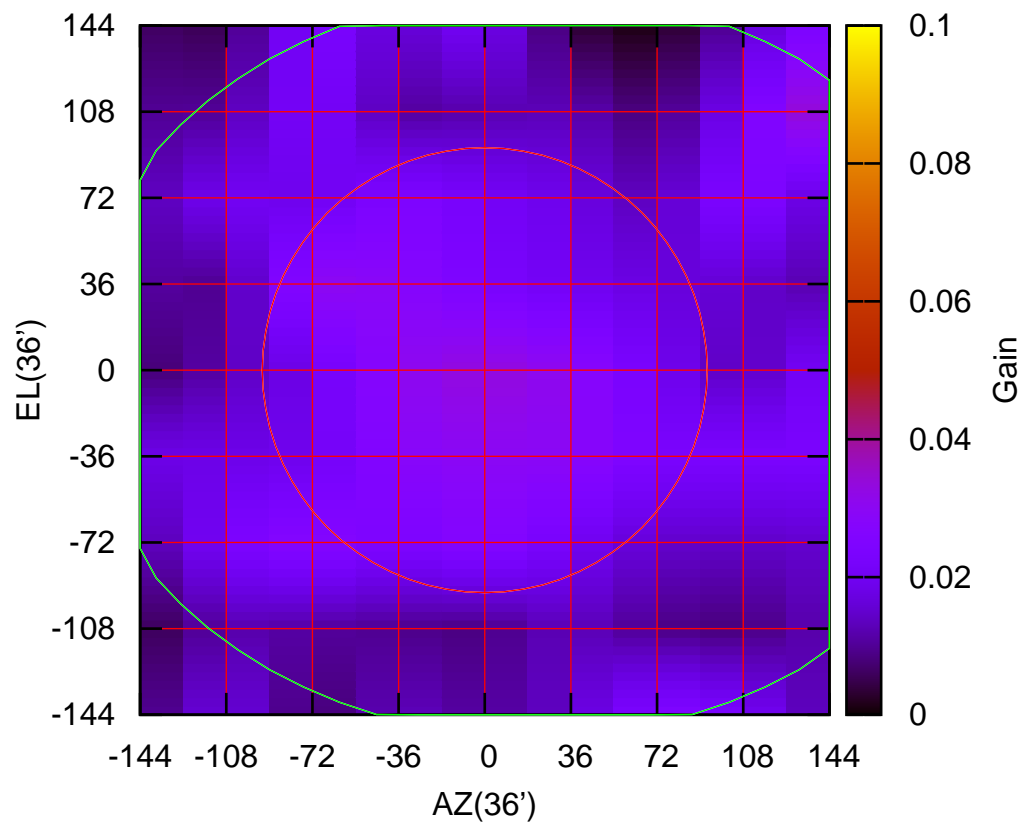
150 MHz.



C04-175 ELOFF= -4.9' ELBEAM=228.5'

C05-130 AZOFF= 20.8' AZBEAM=385.9'

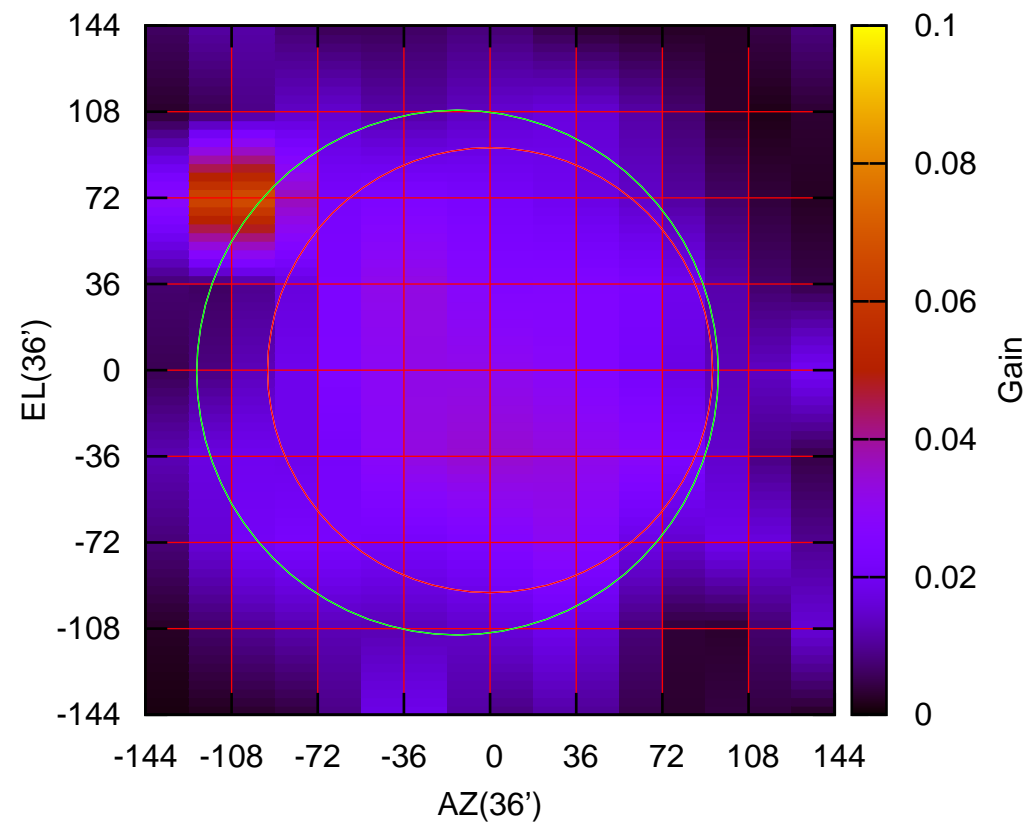
150 MHz.



C05-130 ELOFF= 2.5' ELBEAM=311.6'

C05-175 AZOFF=-13.7' AZBEAM=218.1'

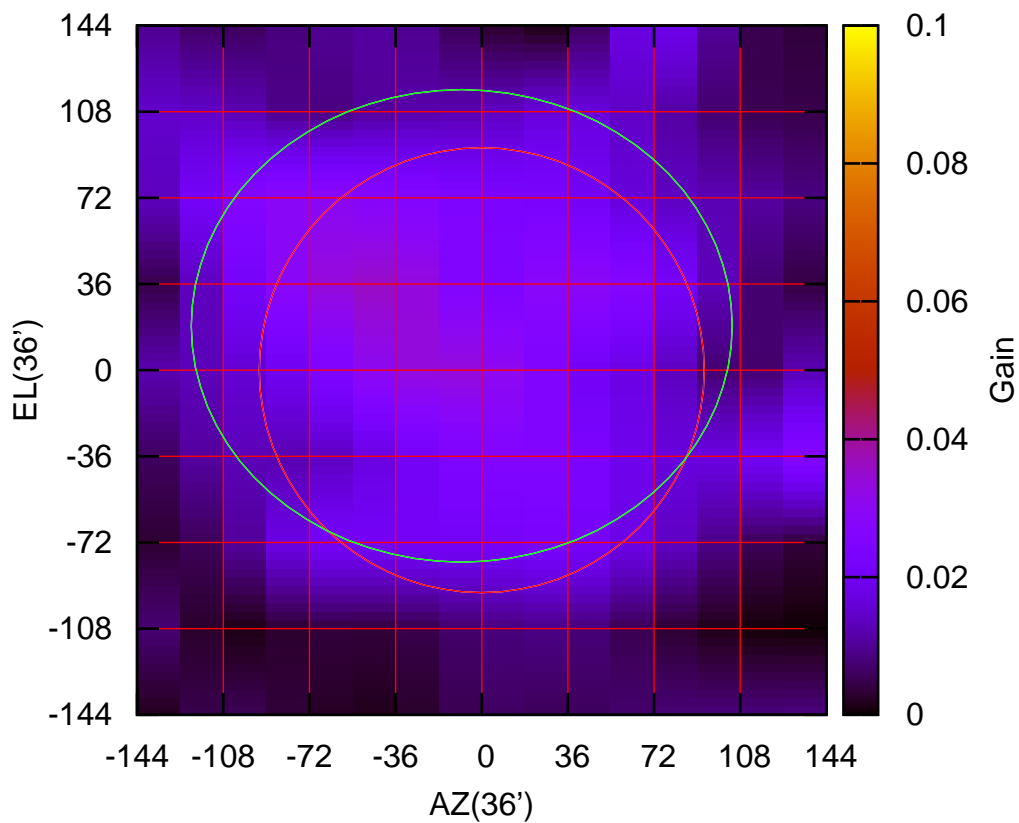
150 MHz.



C05-175 ELOFF= -1.1' ELBEAM=219.4'

C06-130 AZOFF= -8.4' AZBEAM=226.1'

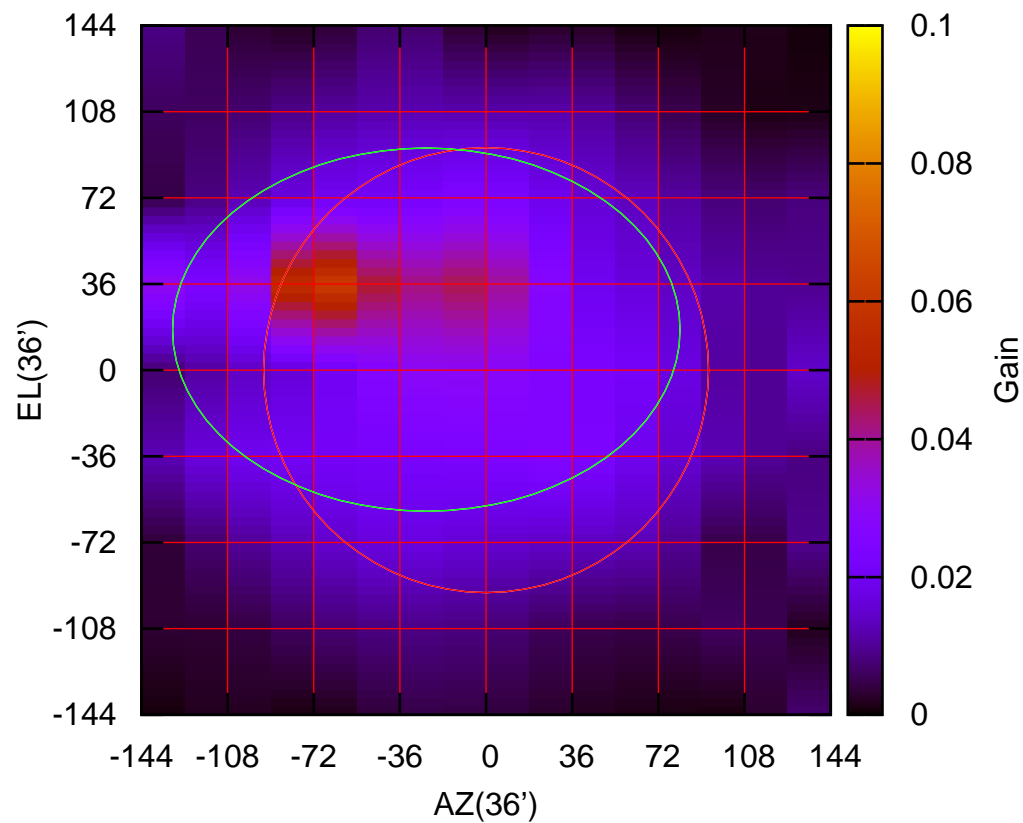
150 MHz.



C06-130 ELOFF= 18.6' ELBEAM=197.5'

C06-175 AZOFF=-25.0' AZBEAM=212.1'

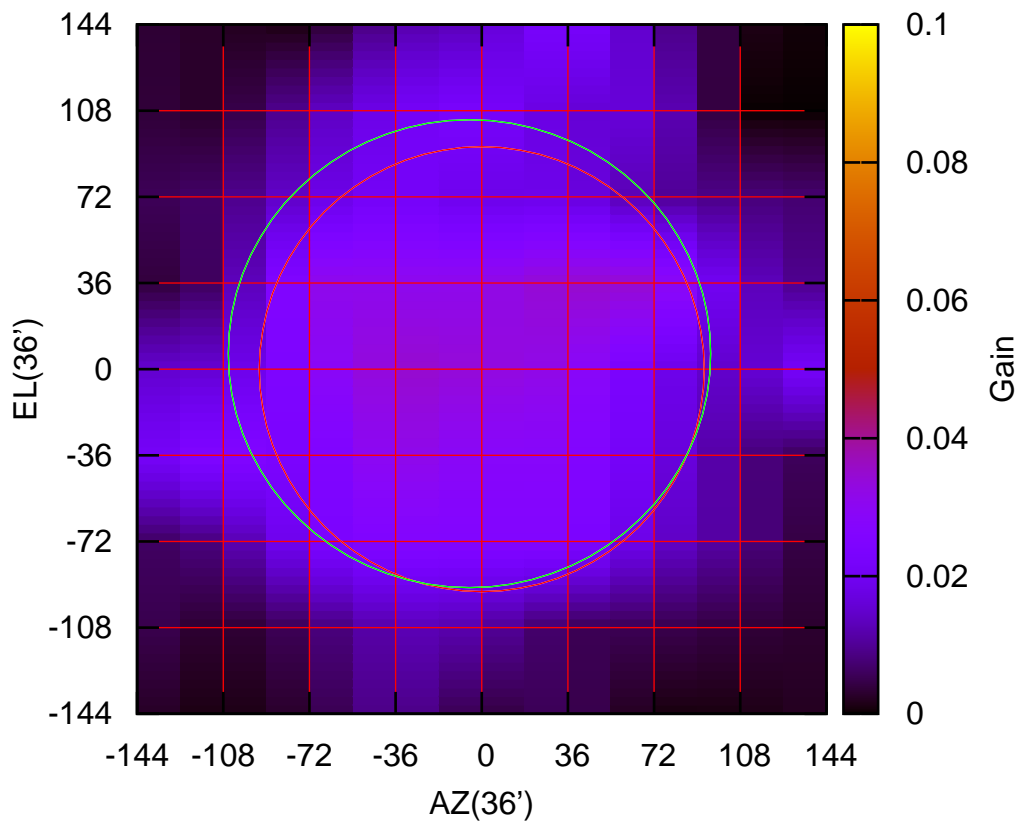
150 MHz.



C06-175 ELOFF= 17.0' ELBEAM=151.8'

C08-130 AZOFF= -5.2' AZBEAM=201.7'

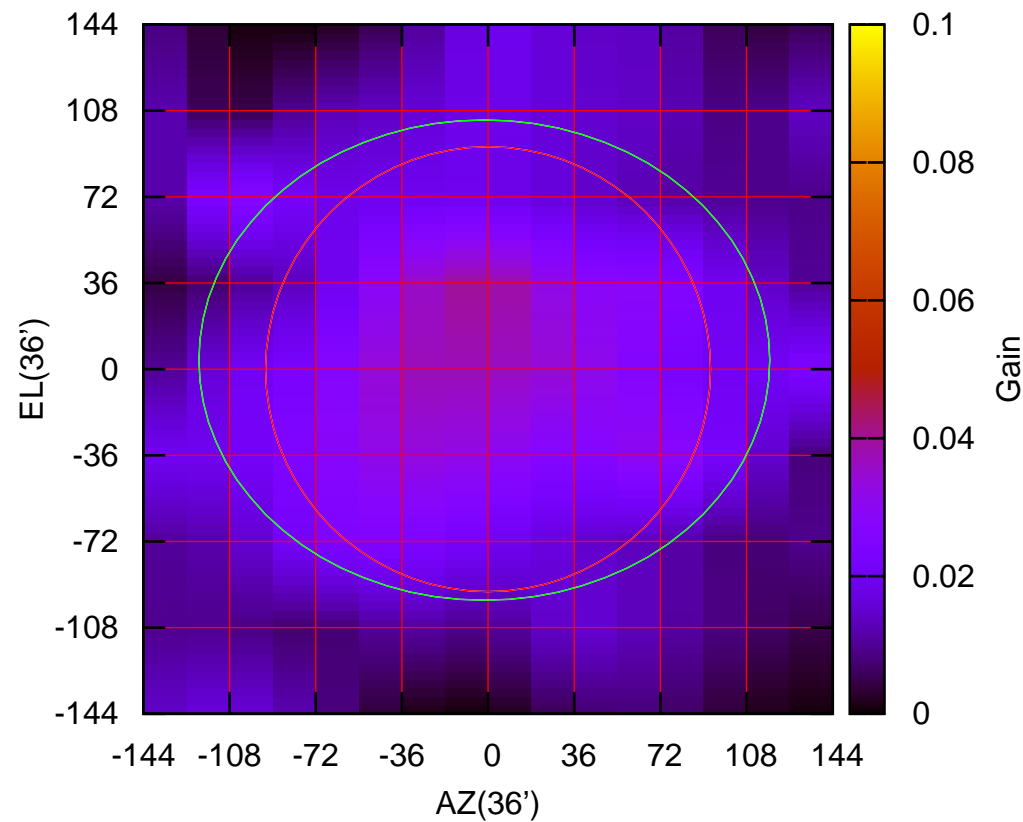
150 MHz.



C08-130 ELOFF= 6.5' ELBEAM=195.6'

C08-175 AZOFF= -1.6' AZBEAM=238.6'

150 MHz.

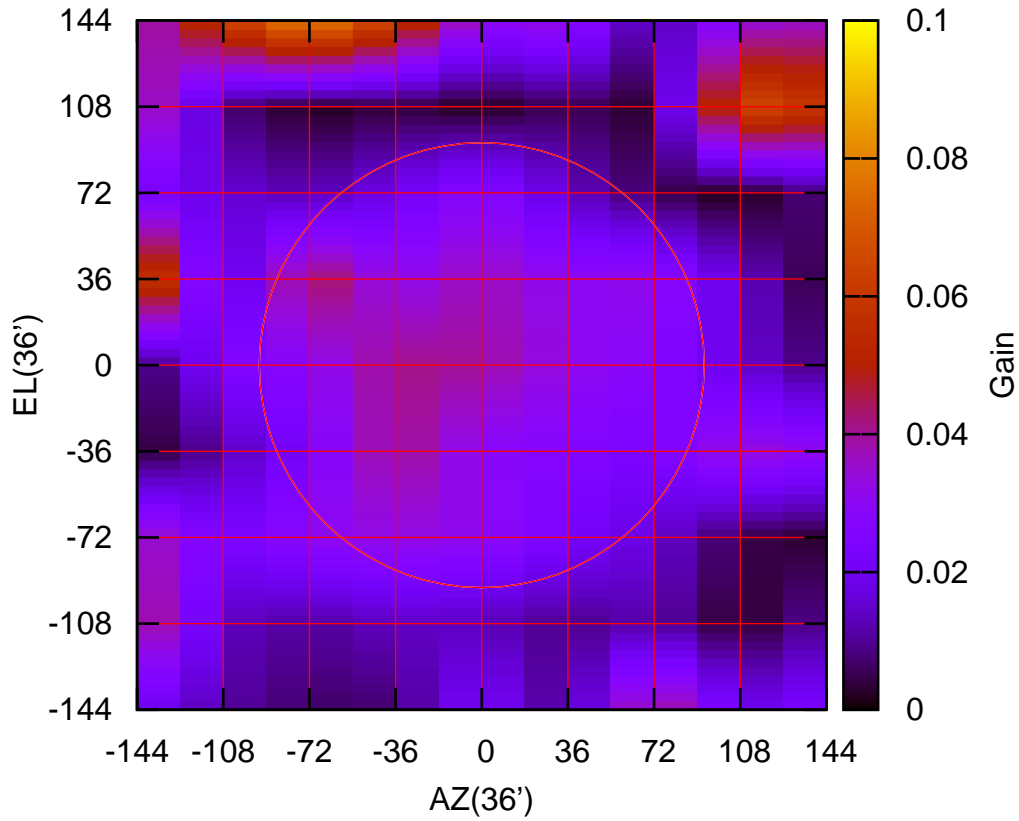


C08-175 ELOFF= 3.9' ELBEAM=200.8'



C09-130 AZOFF=-1312.1' AZBEAM=2343.5'

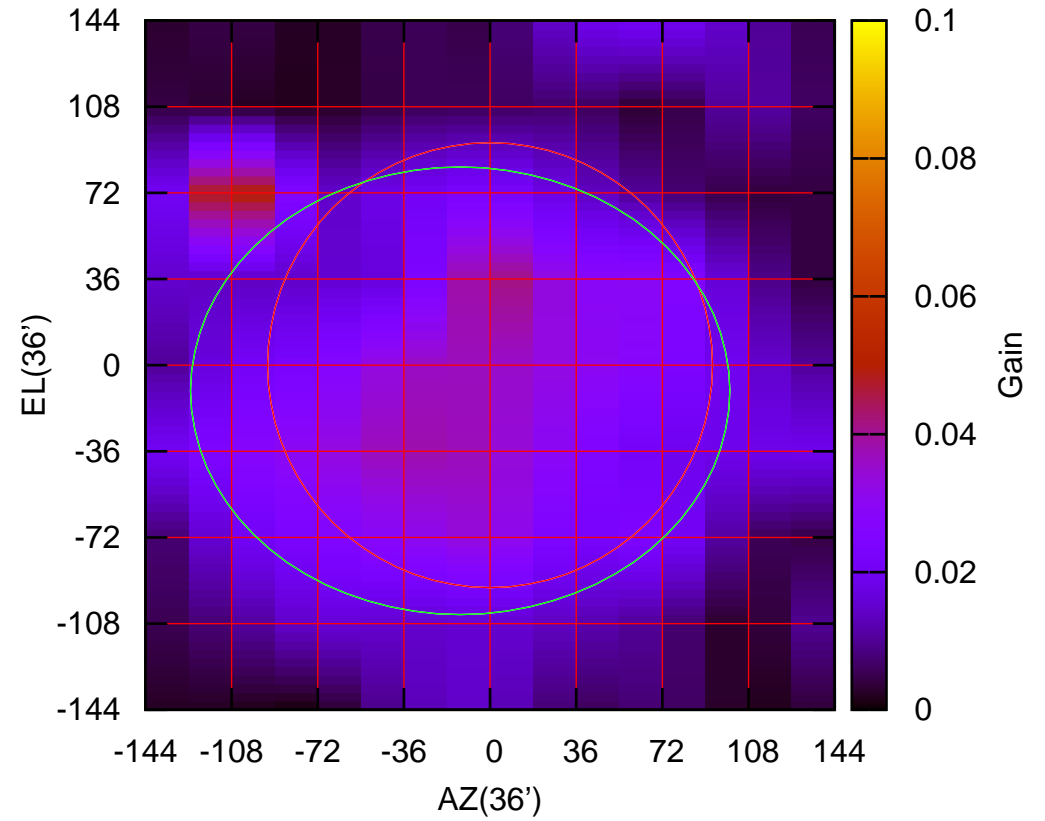
150 MHz.



C09-130 ELOFF=2366.7' ELBEAM=2461.7'

C09-175 AZOFF=-12.5' AZBEAM=225.4'

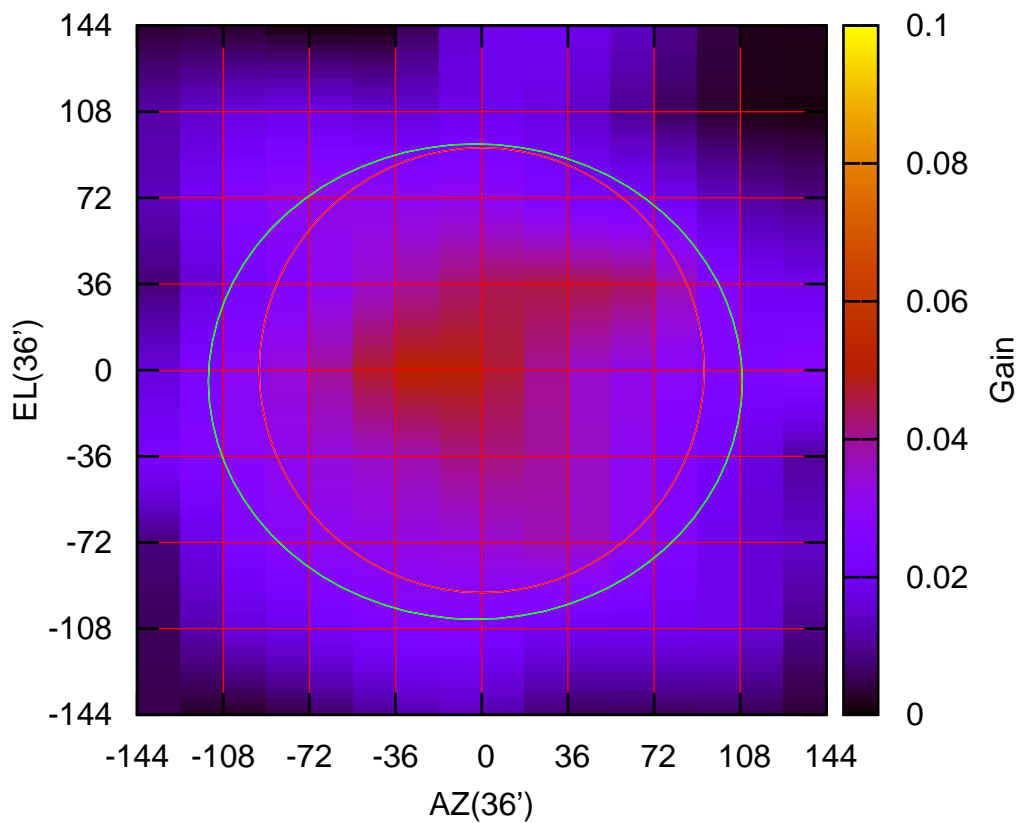
150 MHz.



C09-175 ELOFF=-10.8' ELBEAM=187.1'

C10-130 AZOFF= -2.7' AZBEAM=223.1'

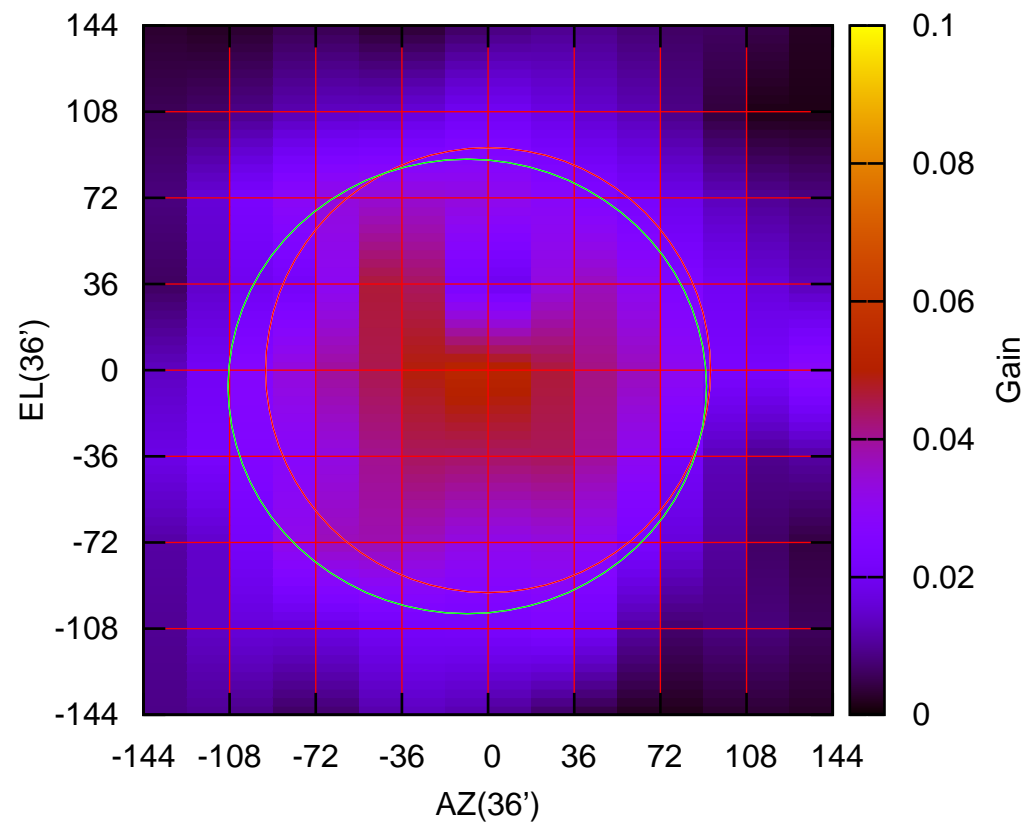
150 MHz.



C10-130 ELOFF= -4.8' ELBEAM=198.7'

C10-175 AZOFF= -8.7' AZBEAM=200.0'

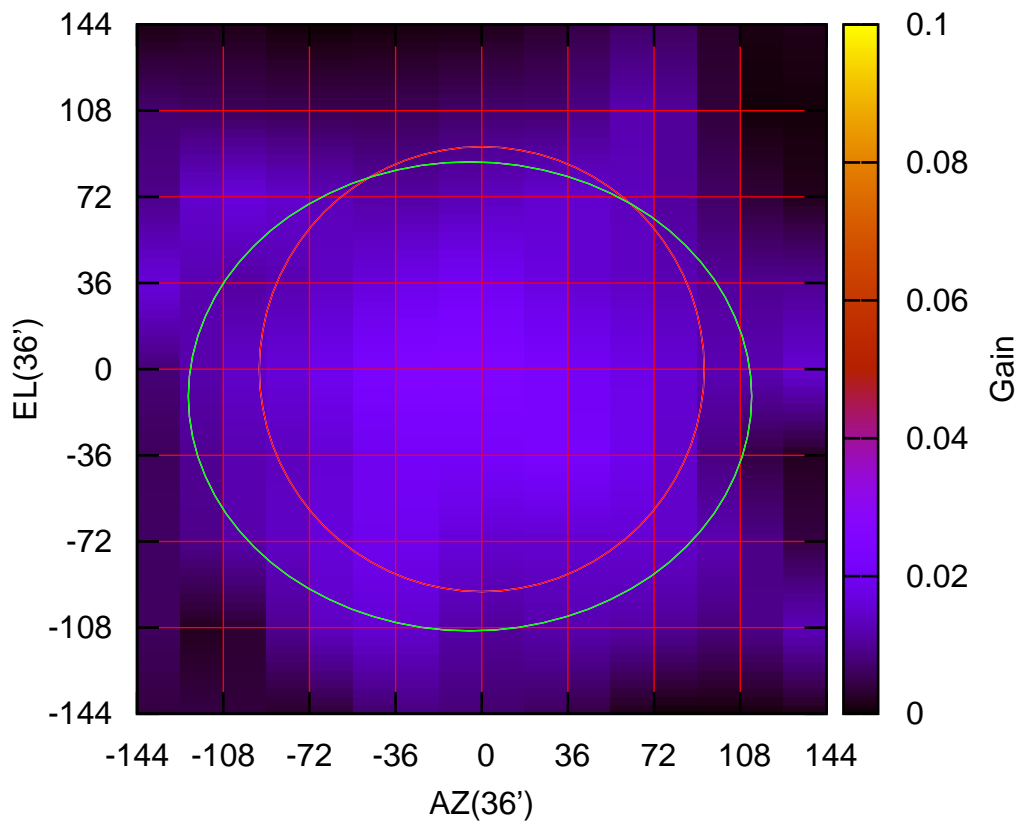
150 MHz.



C10-175 ELOFF= -6.8' ELBEAM=190.1'

C11-130 AZOFF= -5.0' AZBEAM=235.5'

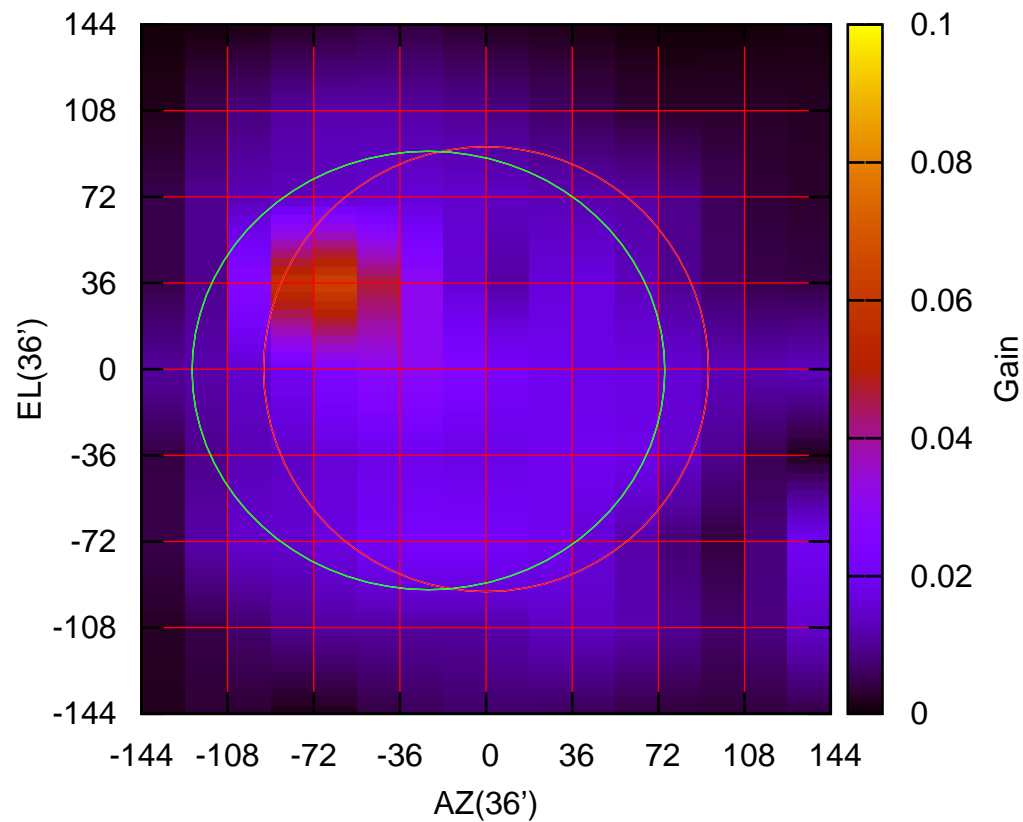
150 MHz.



C11-130 ELOFF=-11.4' ELBEAM=196.1'

C11-175 AZOFF=-24.1' AZBEAM=197.6'

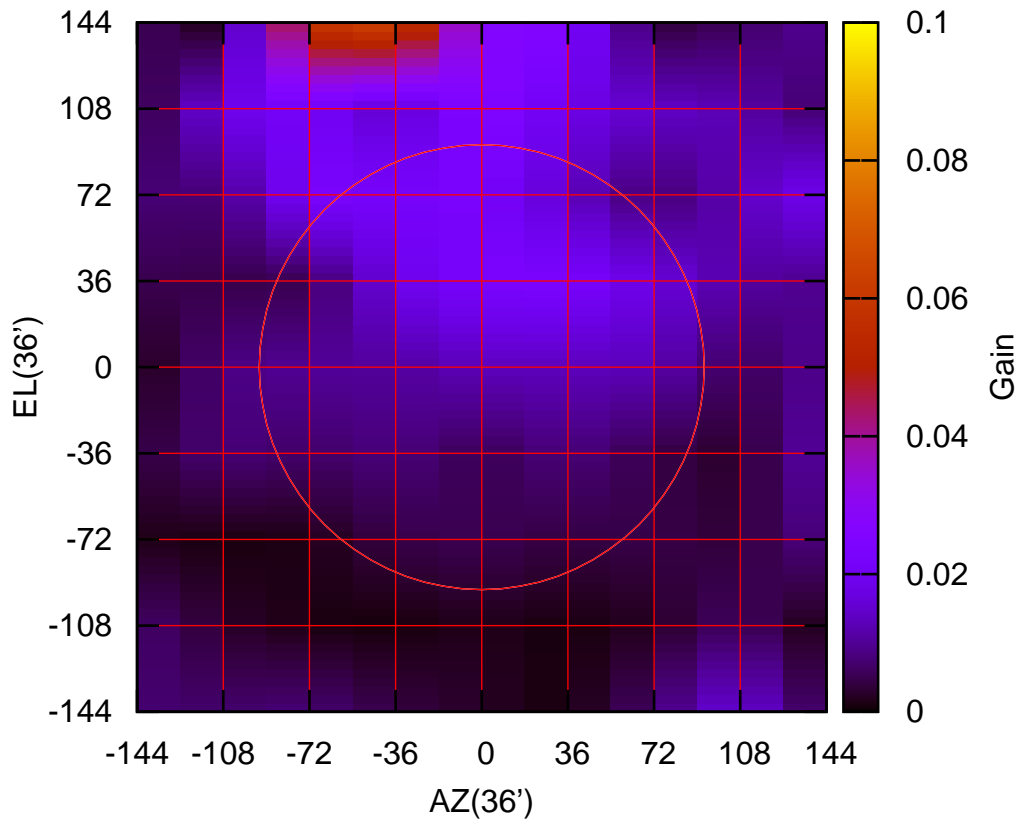
150 MHz.



C11-175 ELOFF= -0.6' ELBEAM=183.3'

C12-130 AZOFF=-21.4' AZBEAM=175.2'

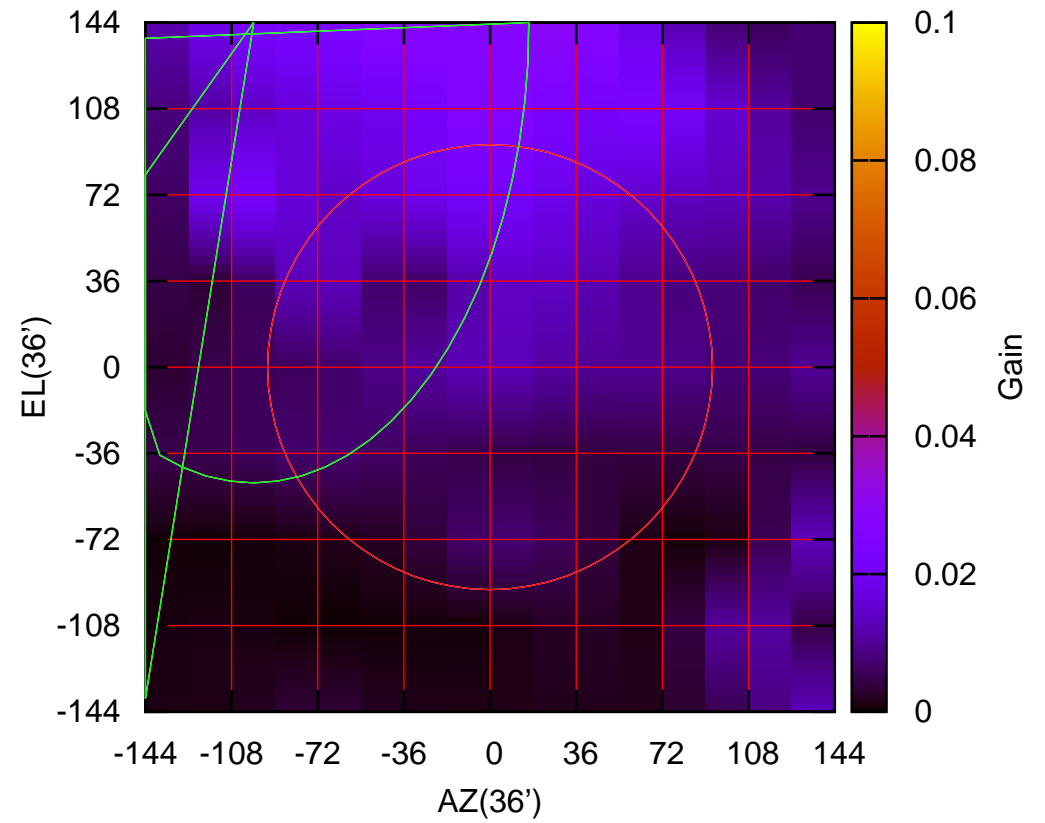
150 MHz.



C12-130 ELOFF=718.5' ELBEAM=673.4'

C12-175 AZOFF= -5.1' AZBEAM=230.0'

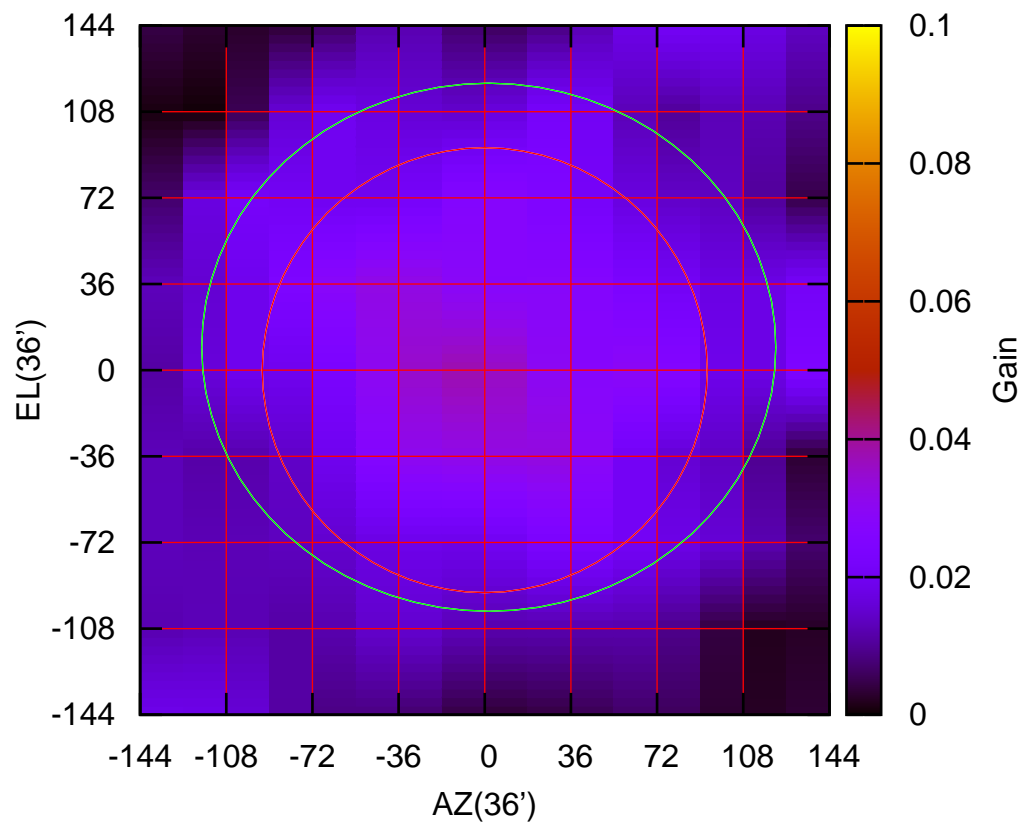
150 MHz.



C12-175 ELOFF=253.8' ELBEAM=384.8'

C13-130 AZOFF= 1.7' AZBEAM=239.9'

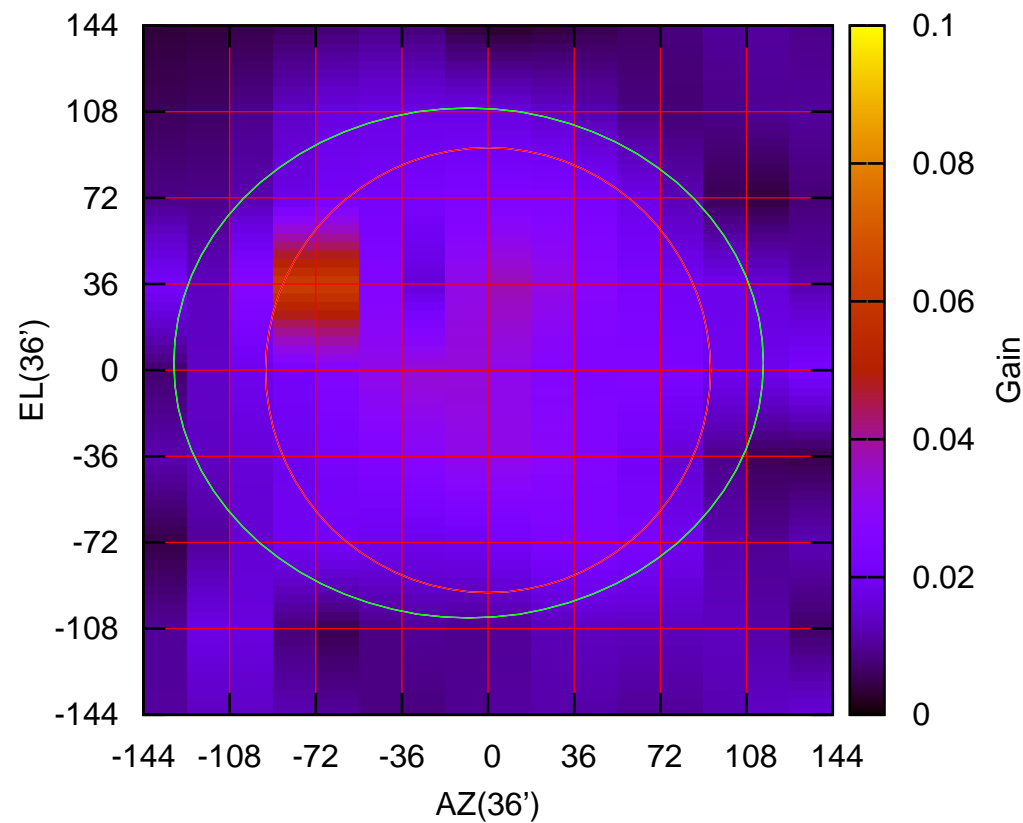
150 MHz.



C13-130 ELOFF= 9.6' ELBEAM=220.8'

C13-175 AZOFF= -8.2' AZBEAM=246.5'

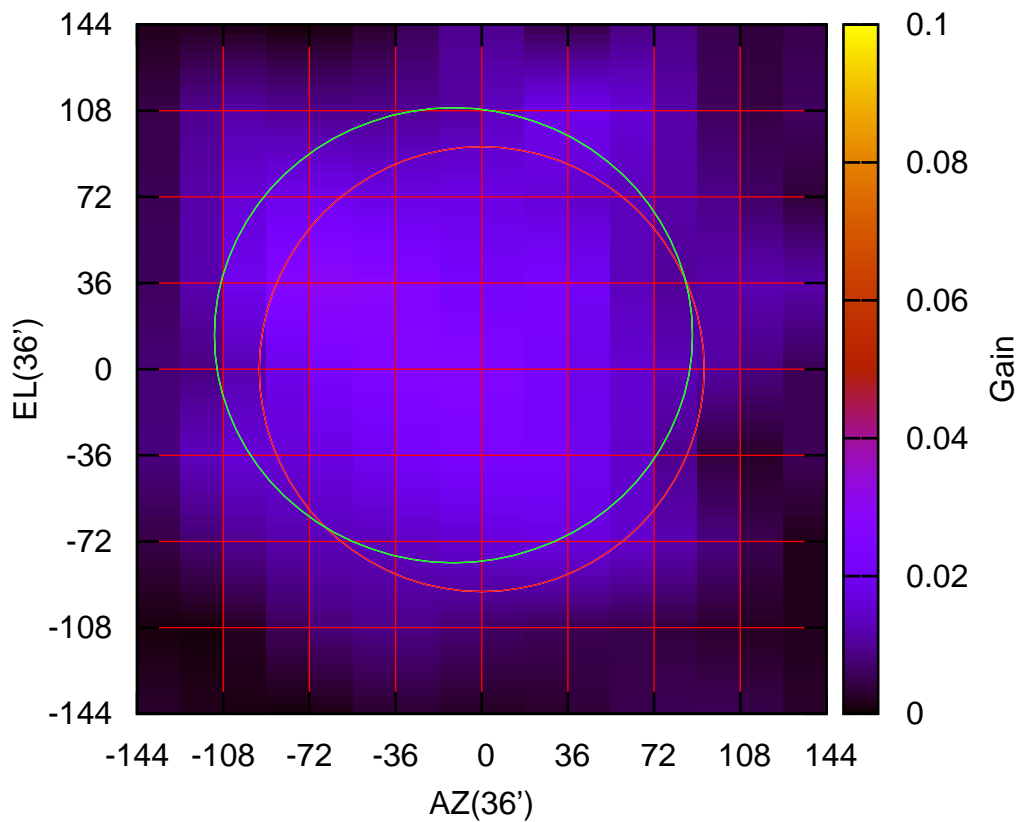
150 MHz.



C13-175 ELOFF= 3.1' ELBEAM=213.2'

C14-130 AZOFF=-11.9' AZBEAM=199.9'

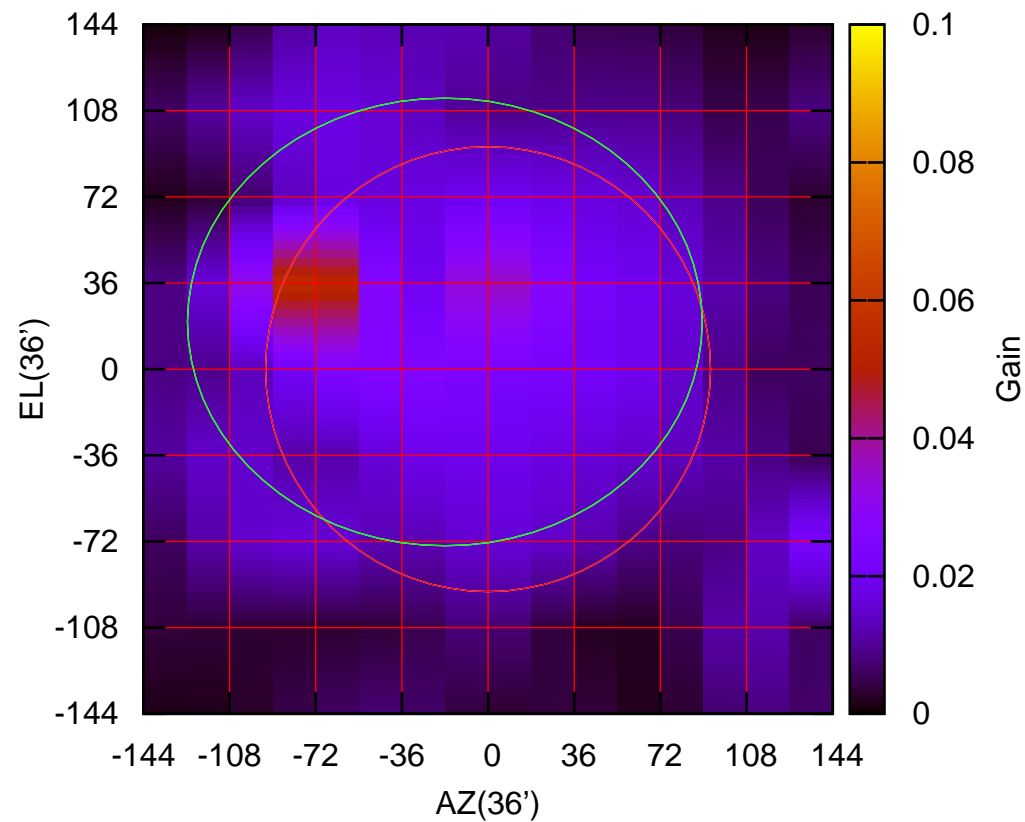
150 MHz.



C14-130 ELOFF= 14.2' ELBEAM=190.2'

C14-175 AZOFF=-18.1' AZBEAM=215.2'

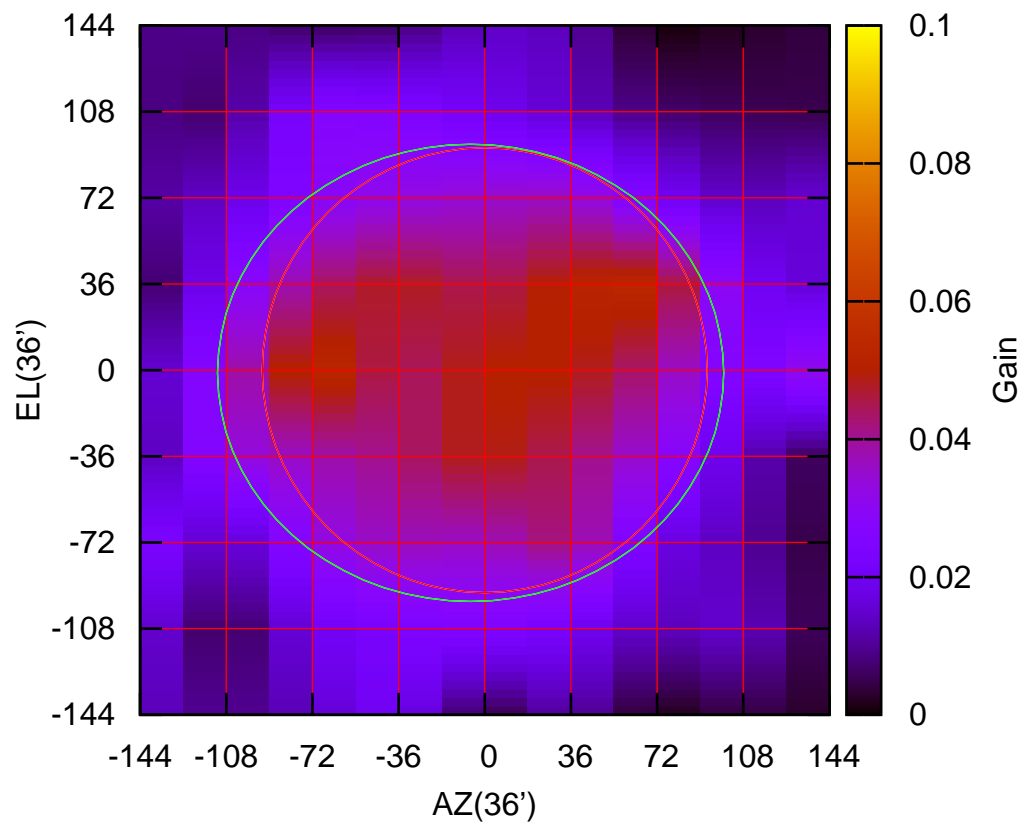
150 MHz.



C14-175 ELOFF= 19.8' ELBEAM=187.2'

W01-130 AZOFF= -6.0' AZBEAM=211.6'

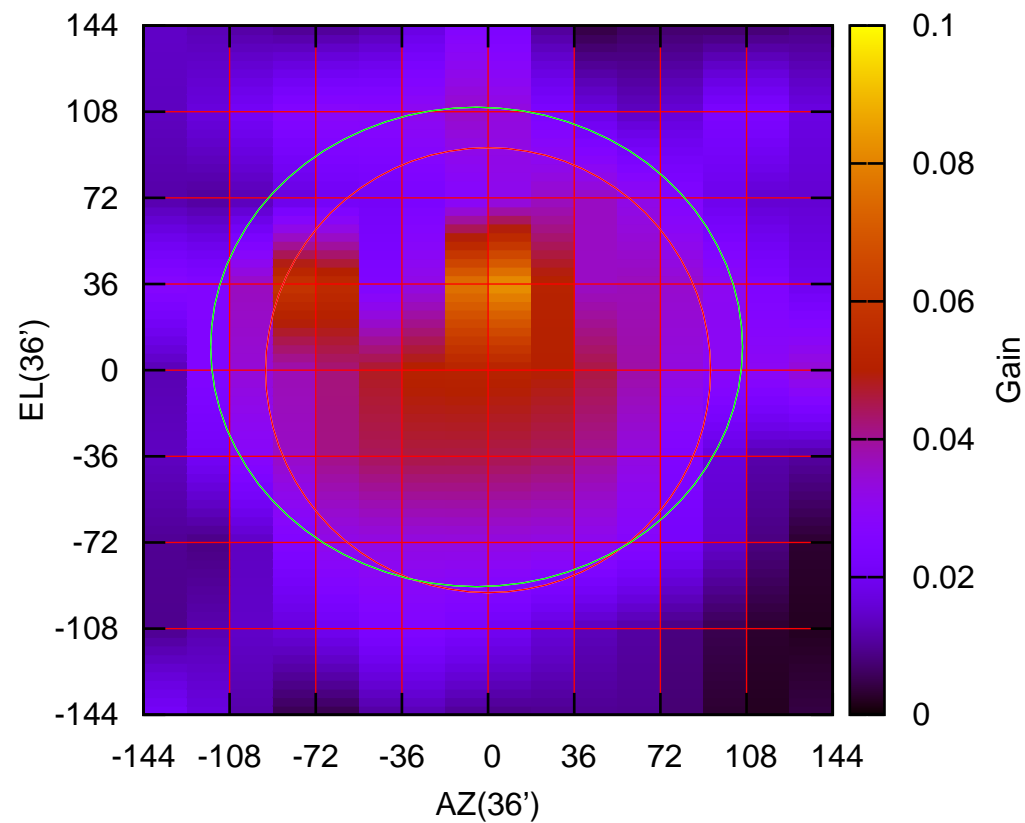
150 MHz.



W01-130 ELOFF= -1.2' ELBEAM=191.2'

W01-175 AZOFF= -4.8' AZBEAM=222.3'

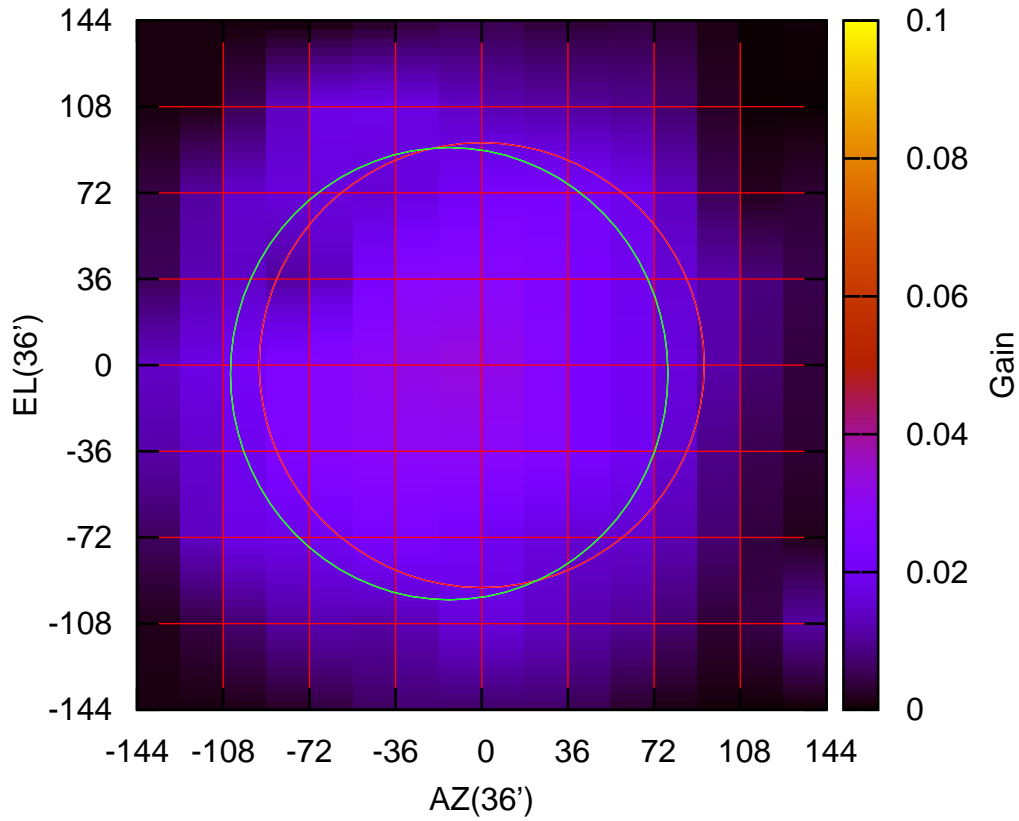
150 MHz.



W01-175 ELOFF= 9.8' ELBEAM=200.4'

W02-130 AZOFF=-13.6' AZBEAM=182.9'

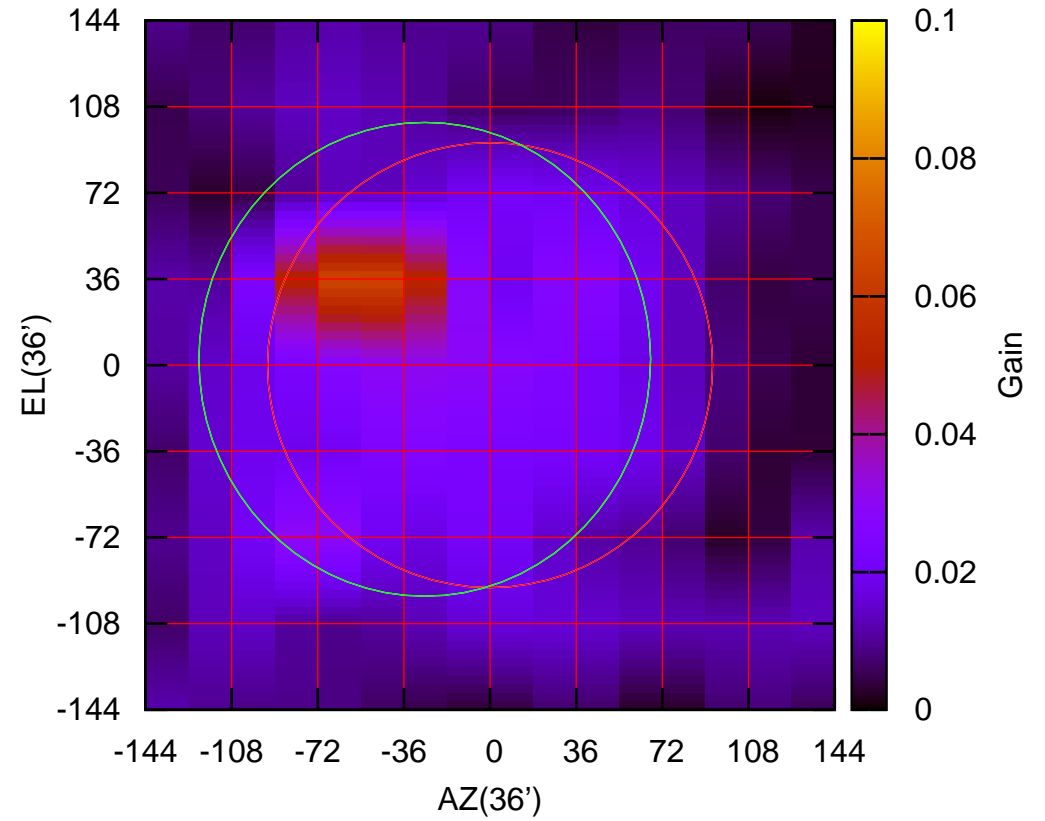
150 MHz.



W02-130 ELOFF= -3.6' ELBEAM=189.0'

W02-175 AZOFF=-27.4' AZBEAM=188.8'

150 MHz.

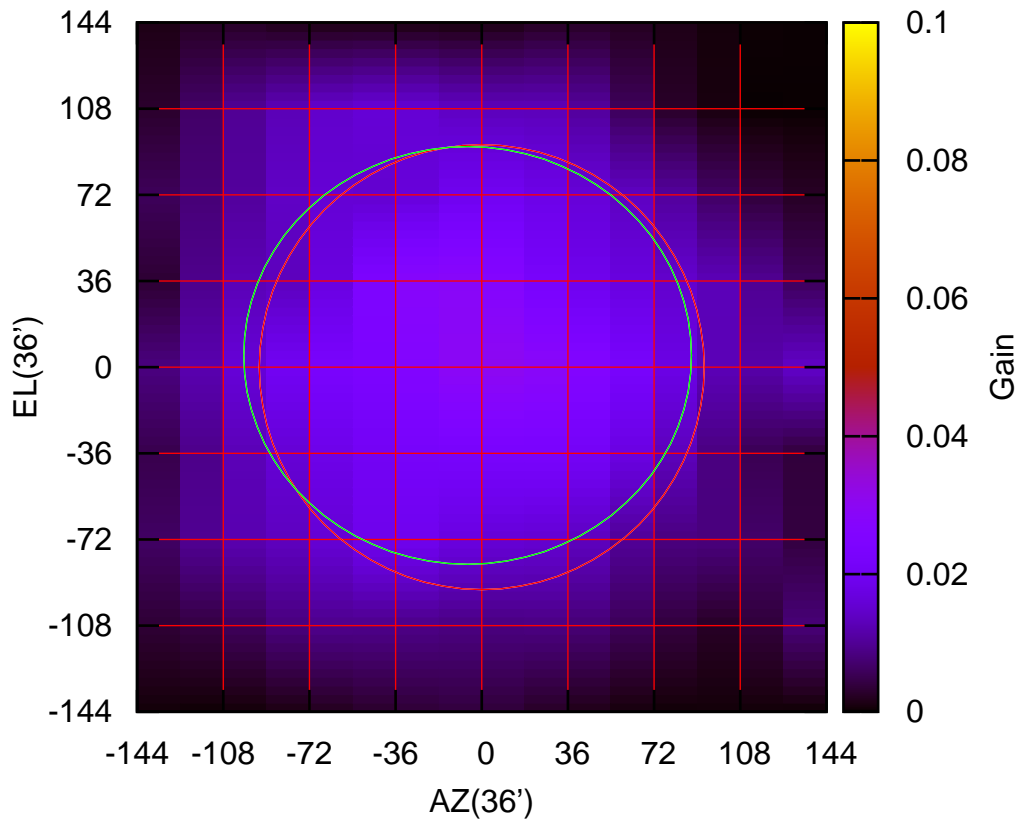


W02-175 ELOFF= 2.5' ELBEAM=198.1'



W03-130 AZOFF= -6.0' AZBEAM=187.2'

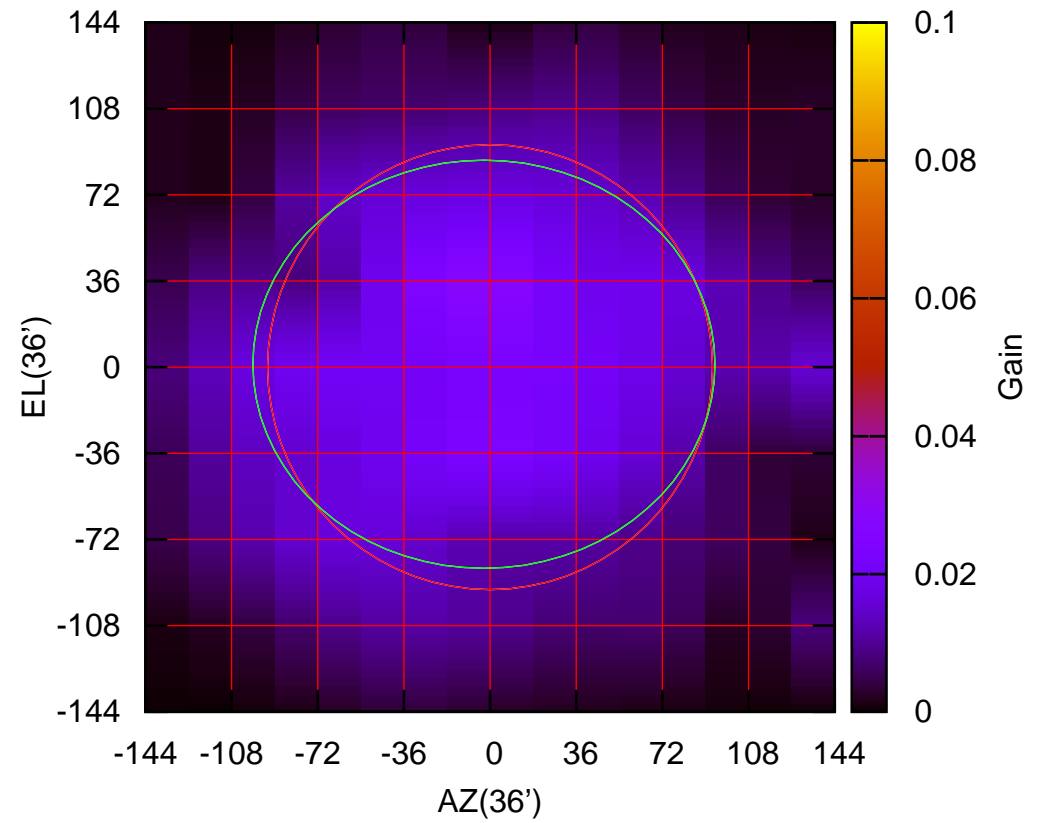
150 MHz.



W03-130 ELOFF= 5.0' ELBEAM=174.6'

W03-175 AZOFF= -2.6' AZBEAM=193.2'

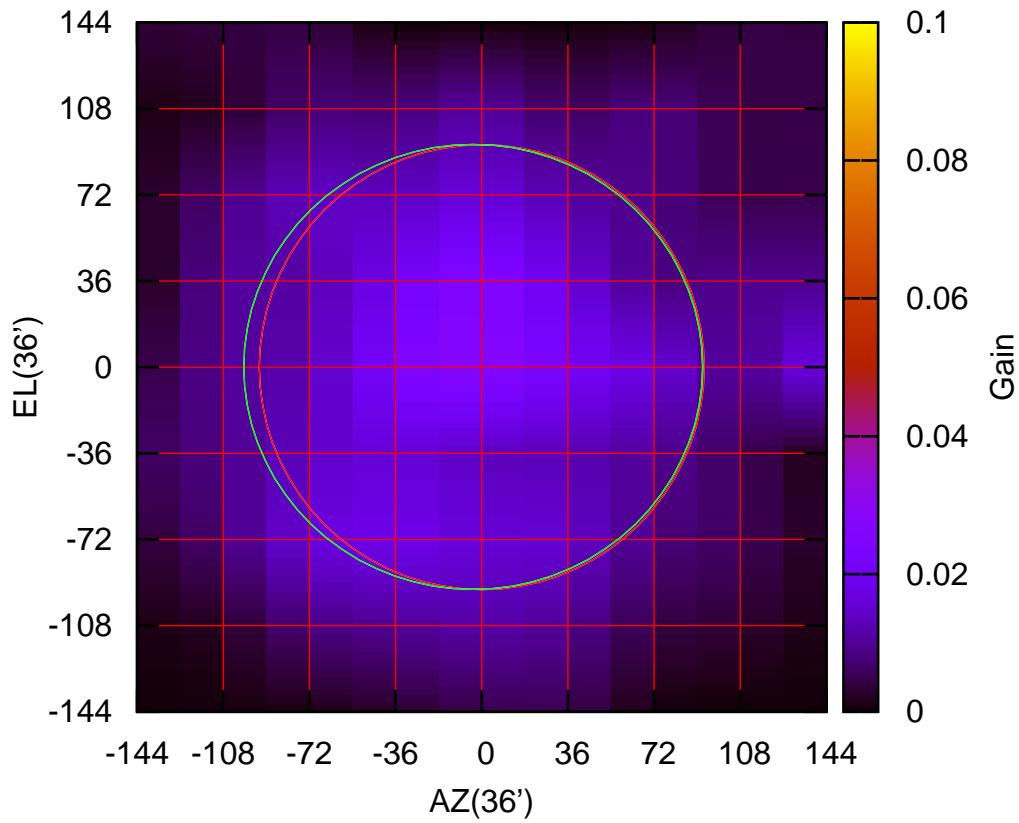
150 MHz.



W03-175 ELOFF= 1.3' ELBEAM=170.7'

W04-130 AZOFF= -3.6' AZBEAM=191.8'

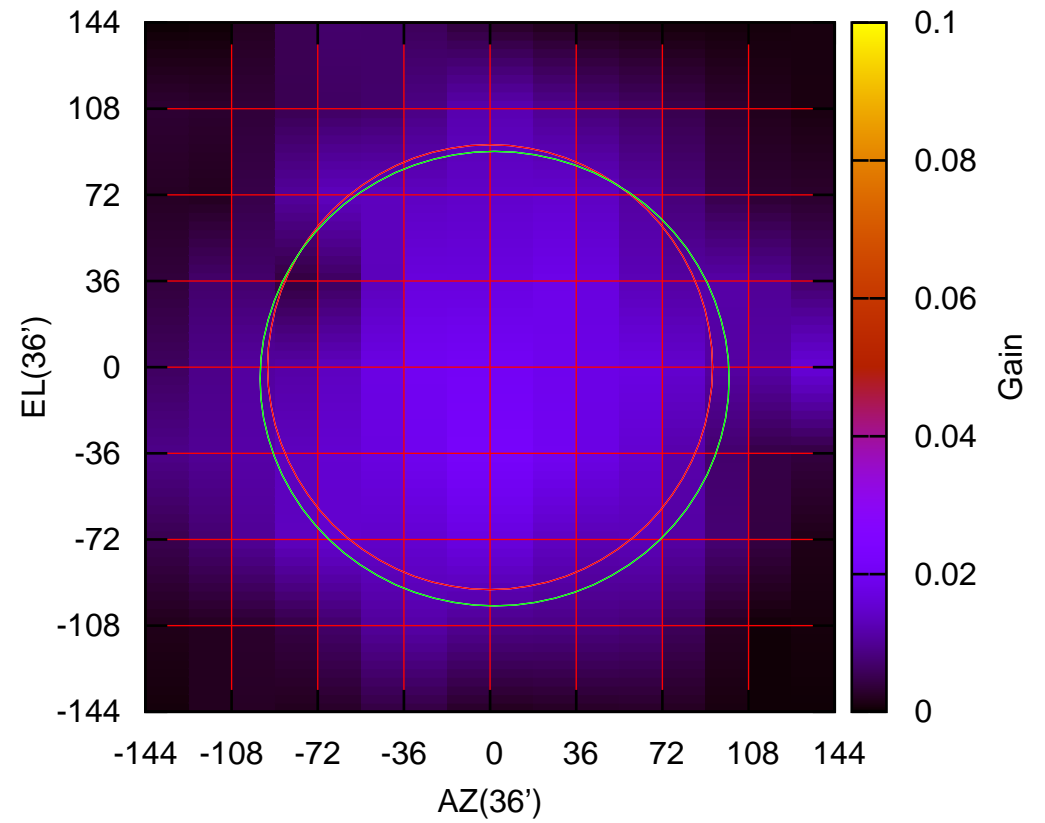
150 MHz.



W04-130 ELOFF= 0.2' ELBEAM=186.1'

W04-175 AZOFF= 2.0' AZBEAM=196.0'

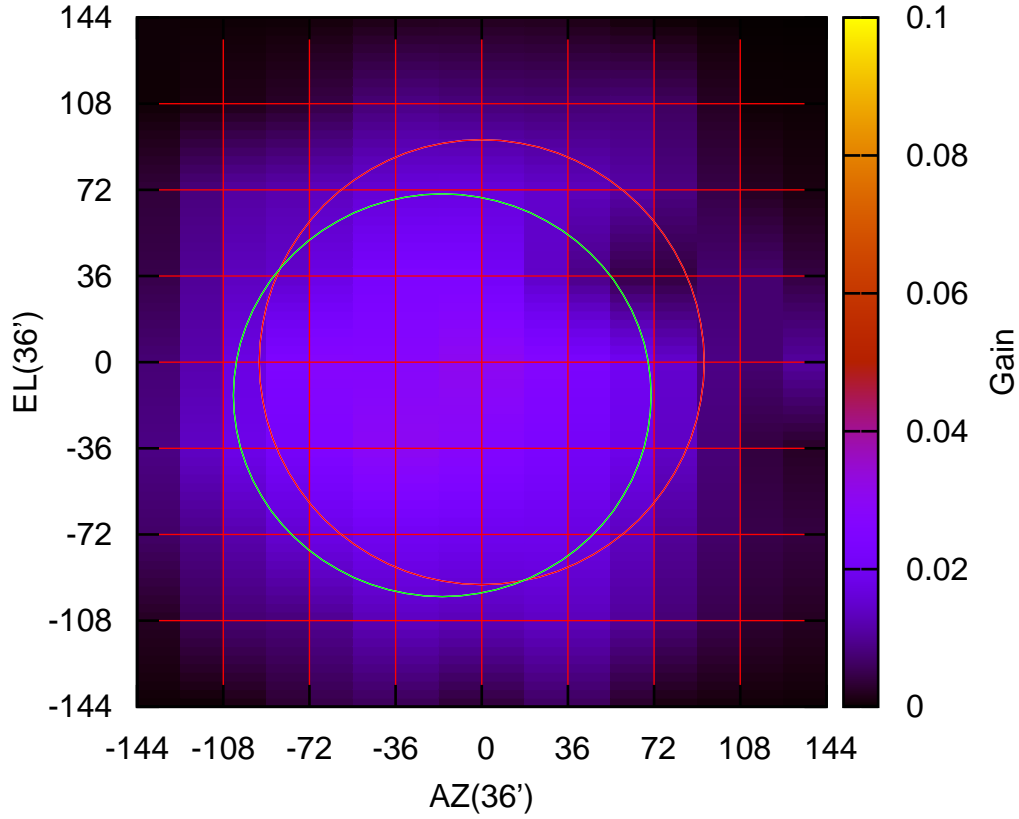
150 MHz.



W04-175 ELOFF= -4.8' ELBEAM=190.1'

W05-130 AZOFF=-16.5' AZBEAM=174.7'

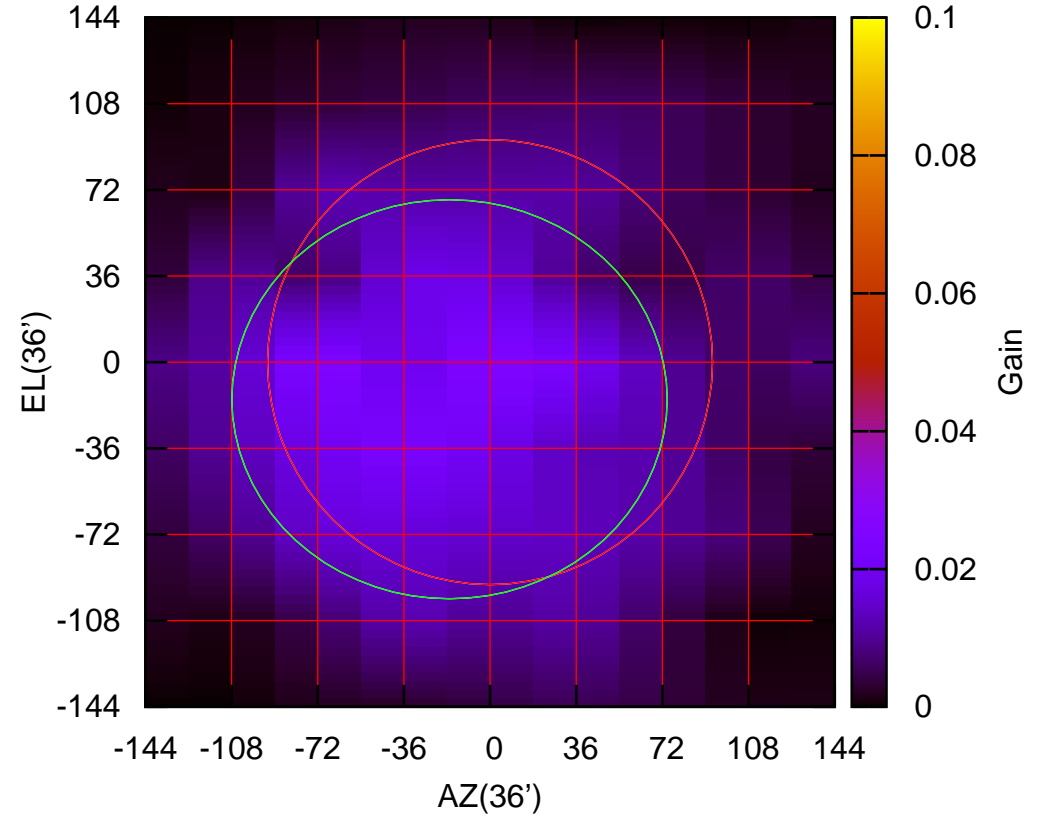
150 MHz.



W05-130 ELOFF=-13.9' ELBEAM=168.3'

W05-175 AZOFF=-17.0' AZBEAM=181.9'

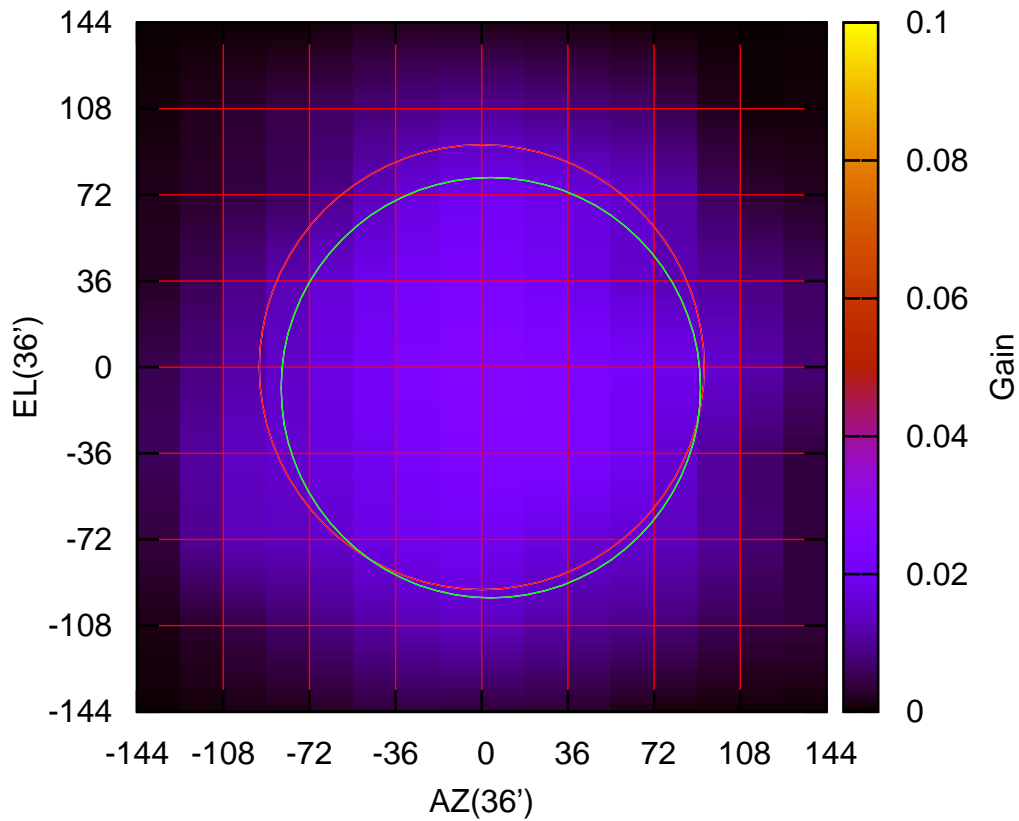
150 MHz.



W05-175 ELOFF=-15.5' ELBEAM=166.9'

W06-130 AZOFF= 3.9' AZBEAM=175.4'

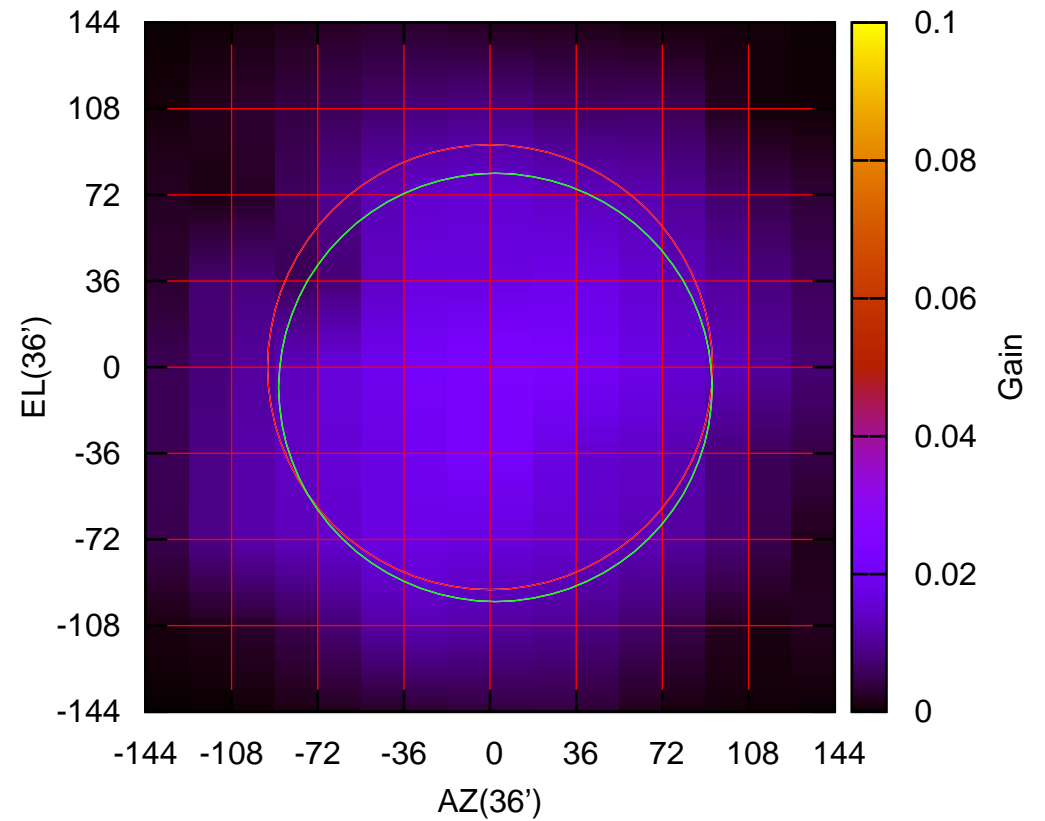
150 MHz.



W06-130 ELOFF= -8.6' ELBEAM=175.8'

W06-175 AZOFF= 2.3' AZBEAM=181.2'

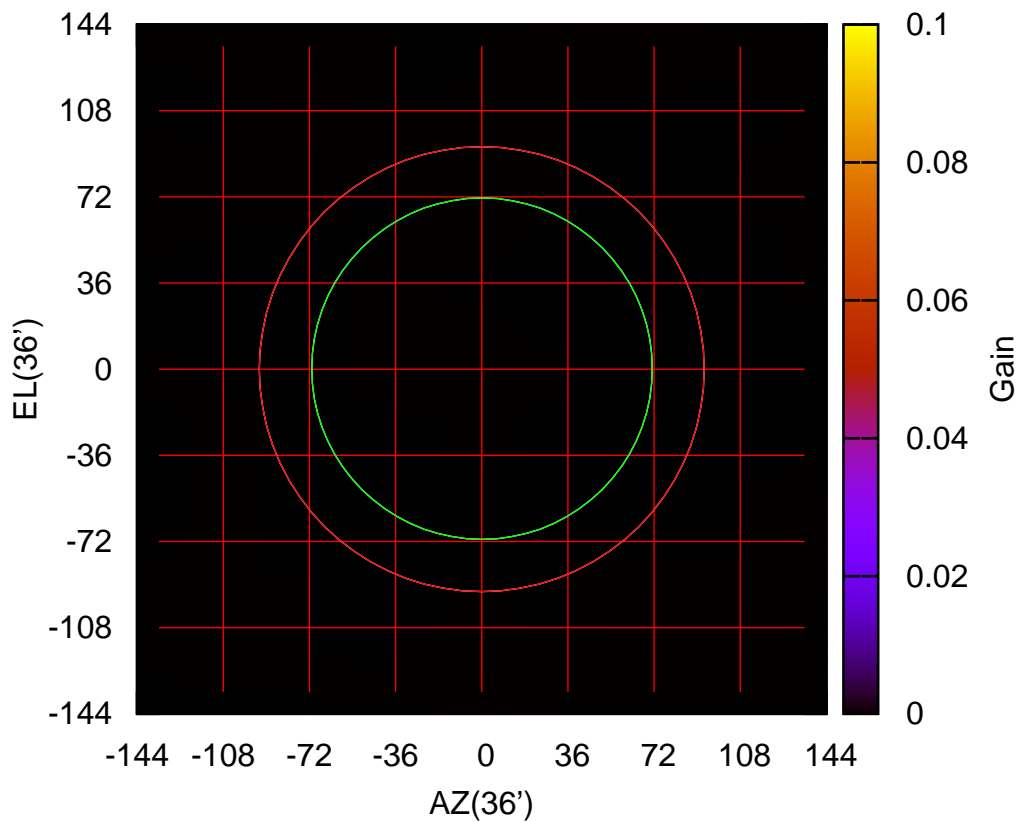
150 MHz.



W06-175 ELOFF= -8.5' ELBEAM=179.0'

E02-130 AZOFF= 0.2' AZBEAM=142.4'

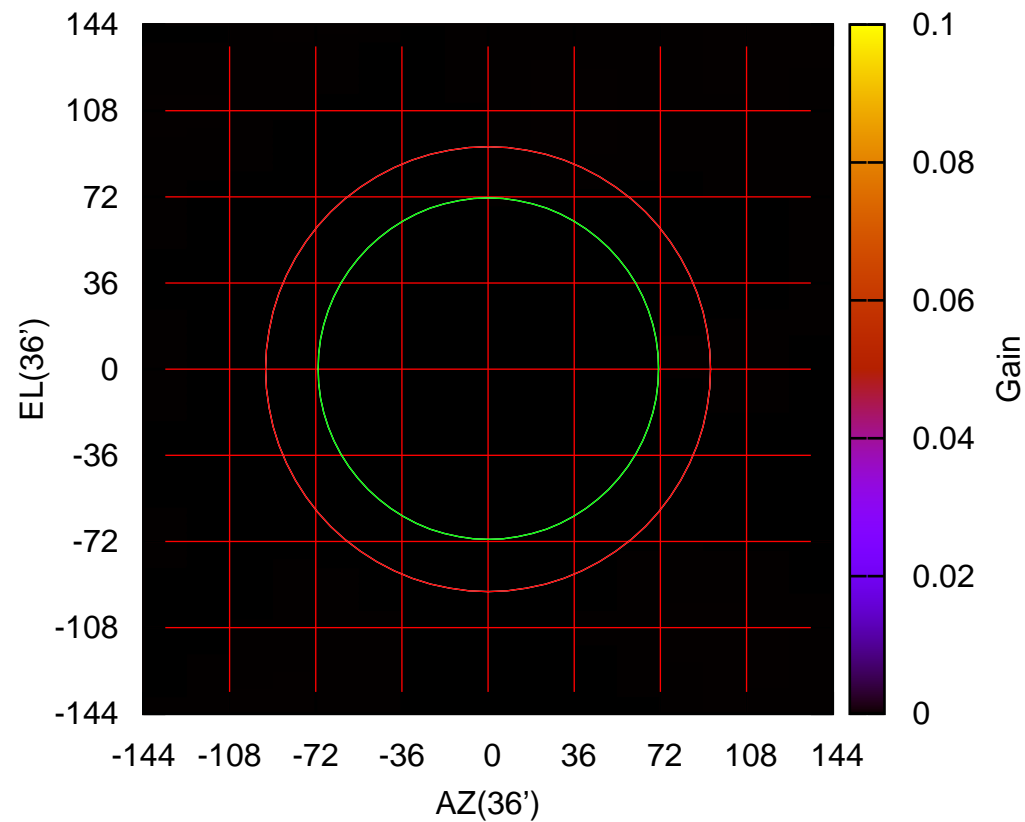
150 MHz.



E02-130 ELOFF= 0.3' ELBEAM=142.8'

E02-175 AZOFF= 0.2' AZBEAM=142.4'

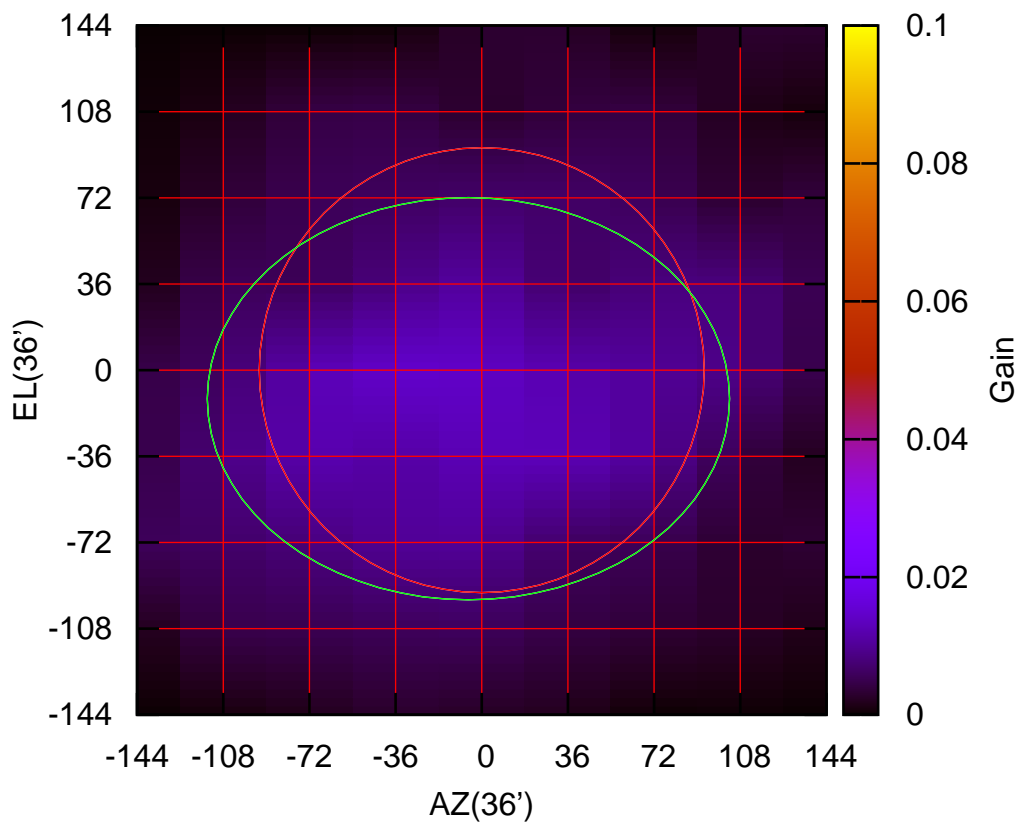
150 MHz.



E02-175 ELOFF= 0.3' ELBEAM=142.8'

E03-130 AZOFF= -5.6' AZBEAM=218.3'

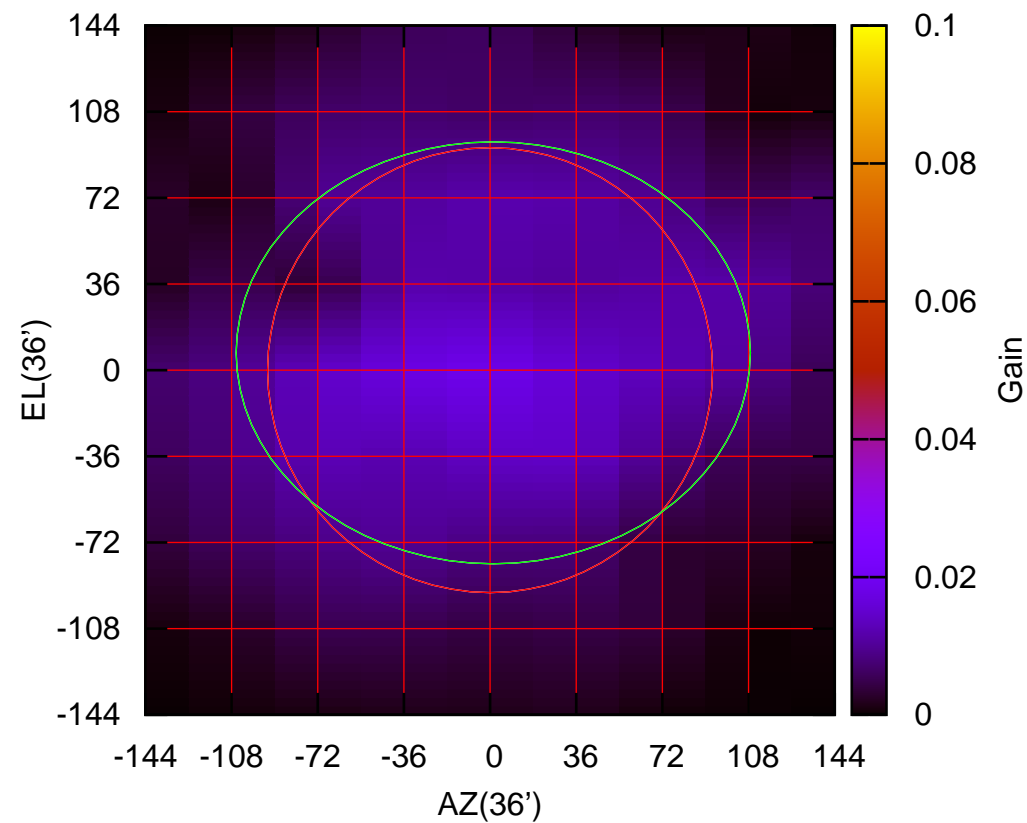
150 MHz.



E03-130 ELOFF=-12.0' ELBEAM=168.2'

E03-175 AZOFF= 1.4' AZBEAM=214.9'

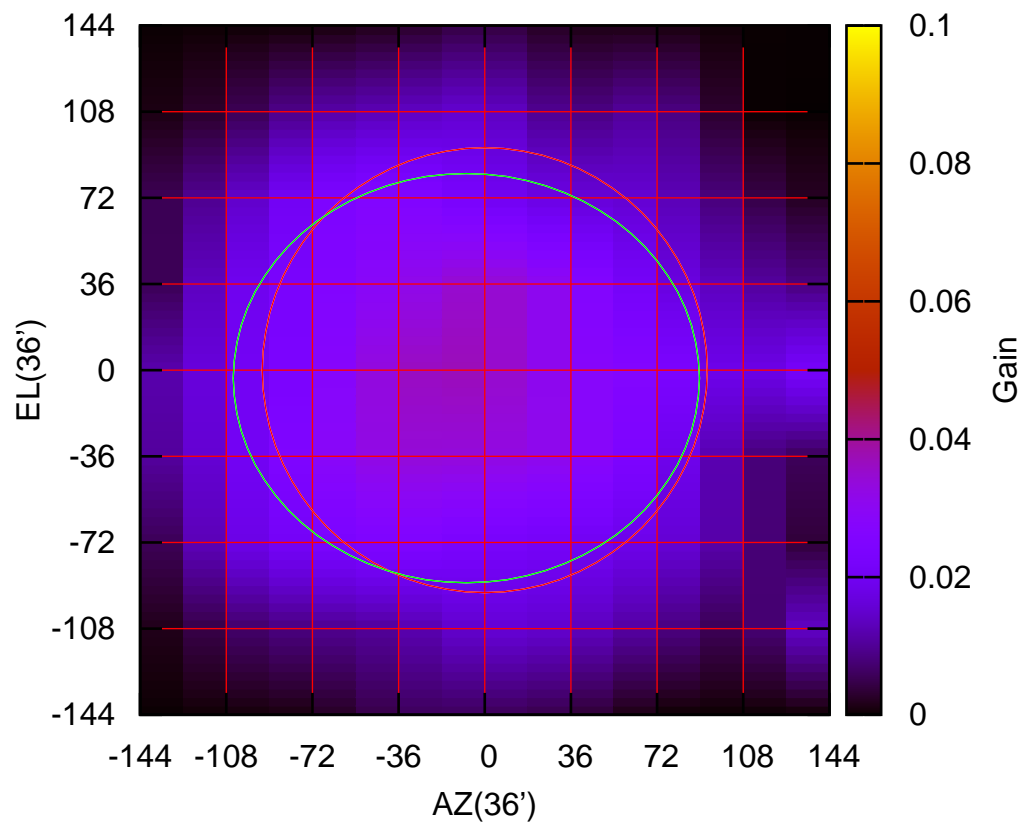
150 MHz.



E03-175 ELOFF= 7.3' ELBEAM=176.4'

E04-130 AZOFF= -7.7' AZBEAM=194.8'

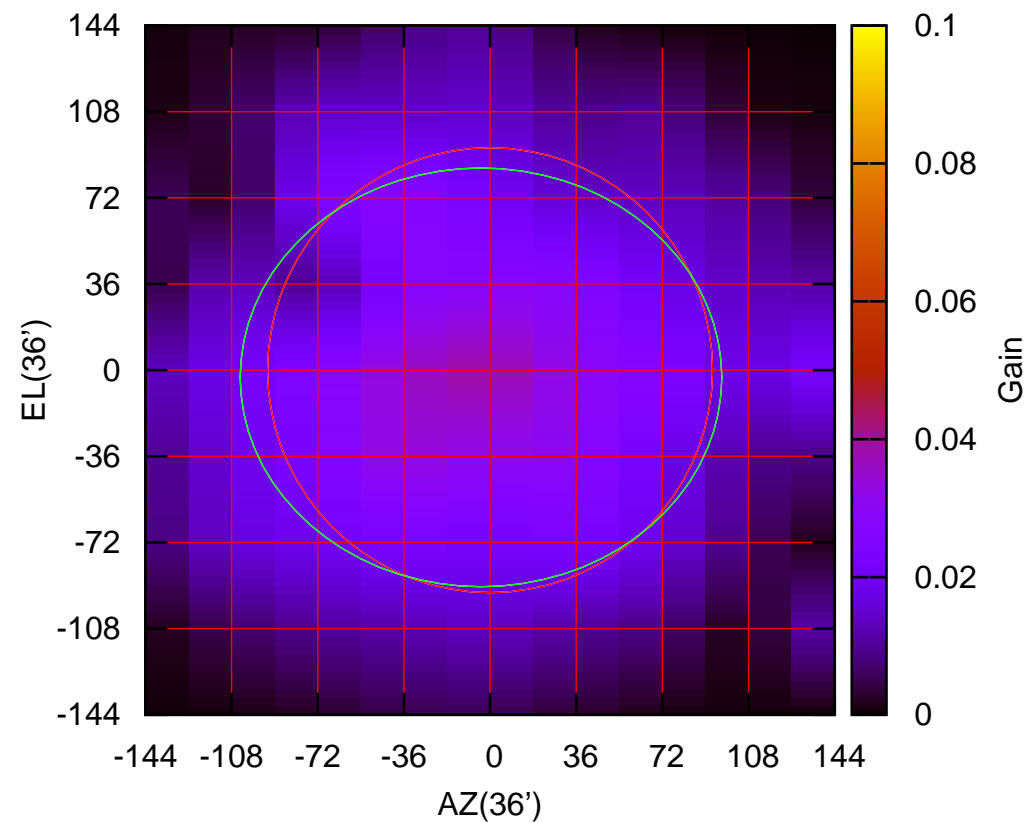
150 MHz.



E04-130 ELOFF= -3.4' ELBEAM=171.1'

E04-175 AZOFF= -3.9' AZBEAM=201.3'

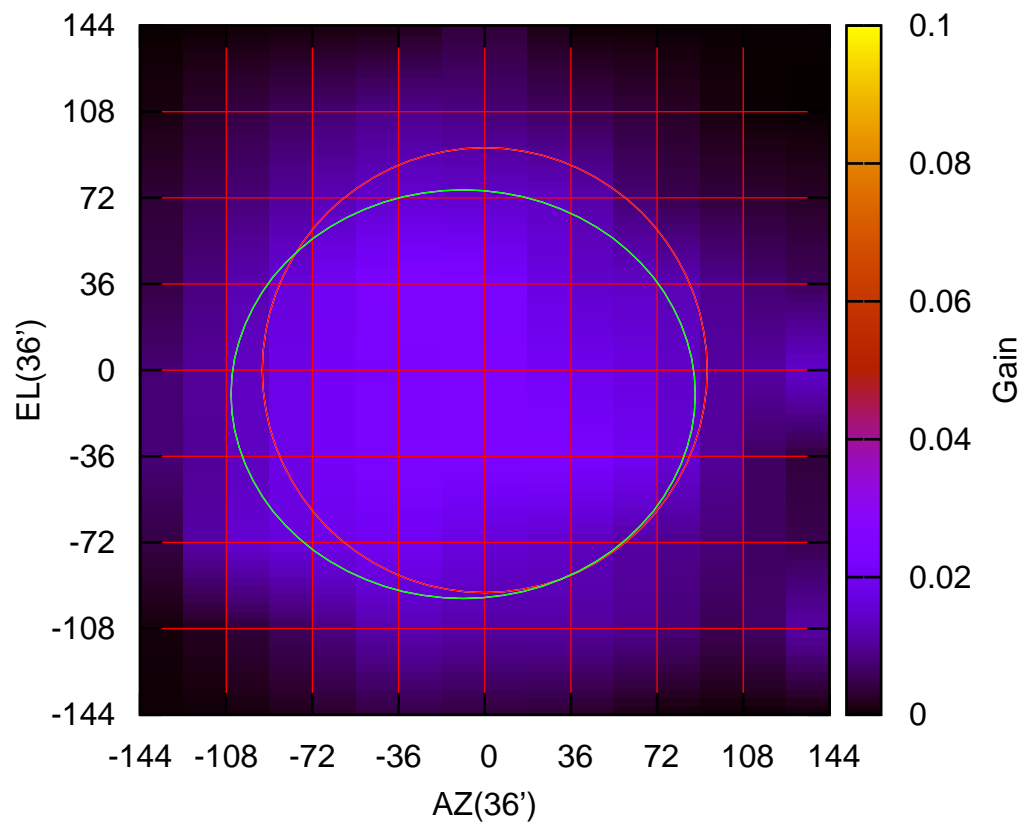
150 MHz.



E04-175 ELOFF= -3.1' ELBEAM=175.1'

E05-130 AZOFF= -9.1' AZBEAM=194.0'

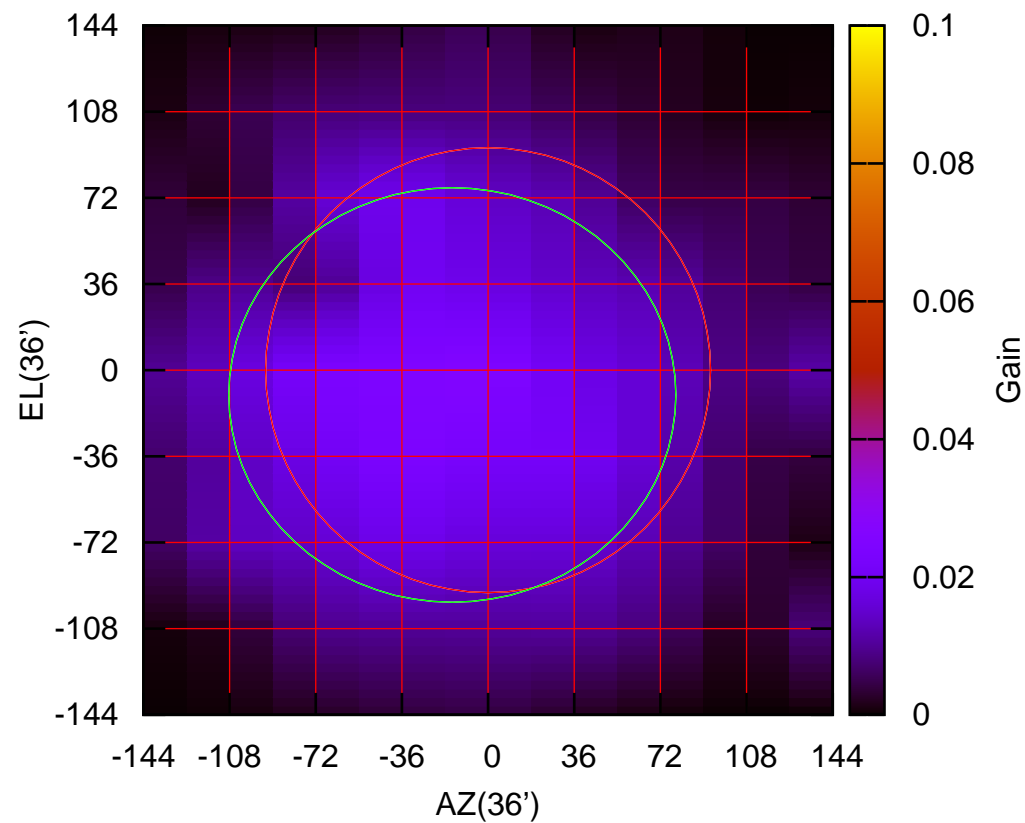
150 MHz.



E05-130 ELOFF=-10.1' ELBEAM=170.8'

E05-175 AZOFF=-15.0' AZBEAM=186.9'

150 MHz.

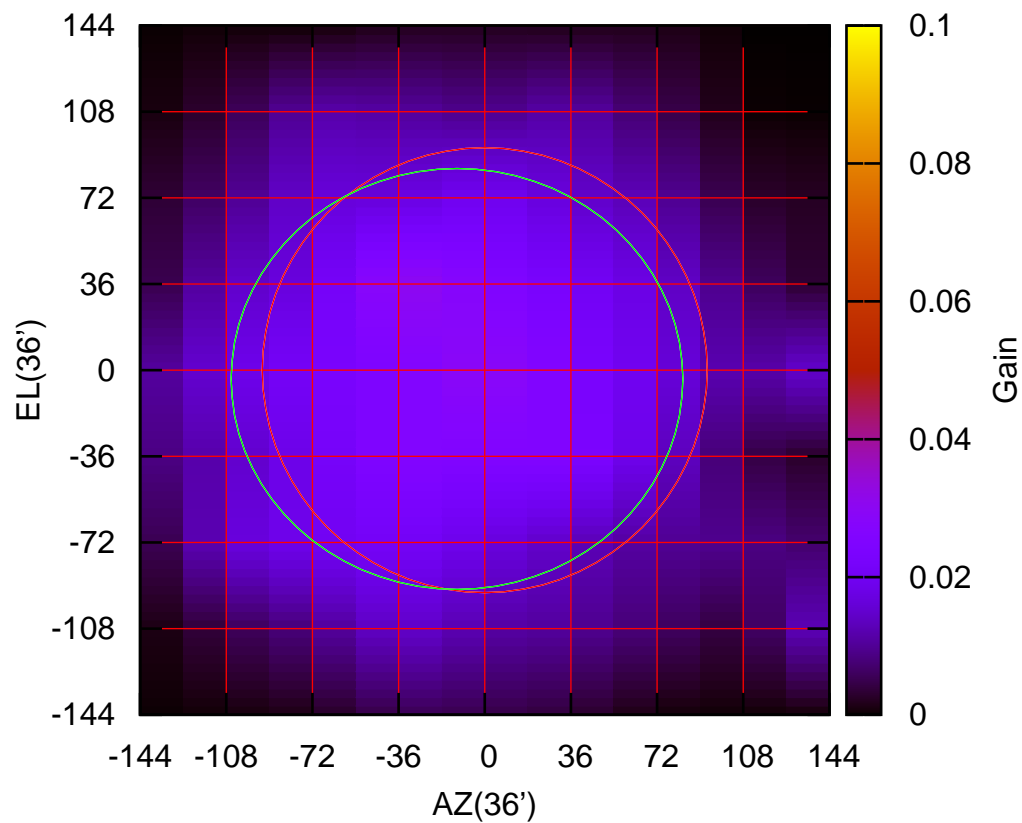


E05-175 ELOFF=-10.4' ELBEAM=173.3'



E06-130 AZOFF=-11.7' AZBEAM=188.8'

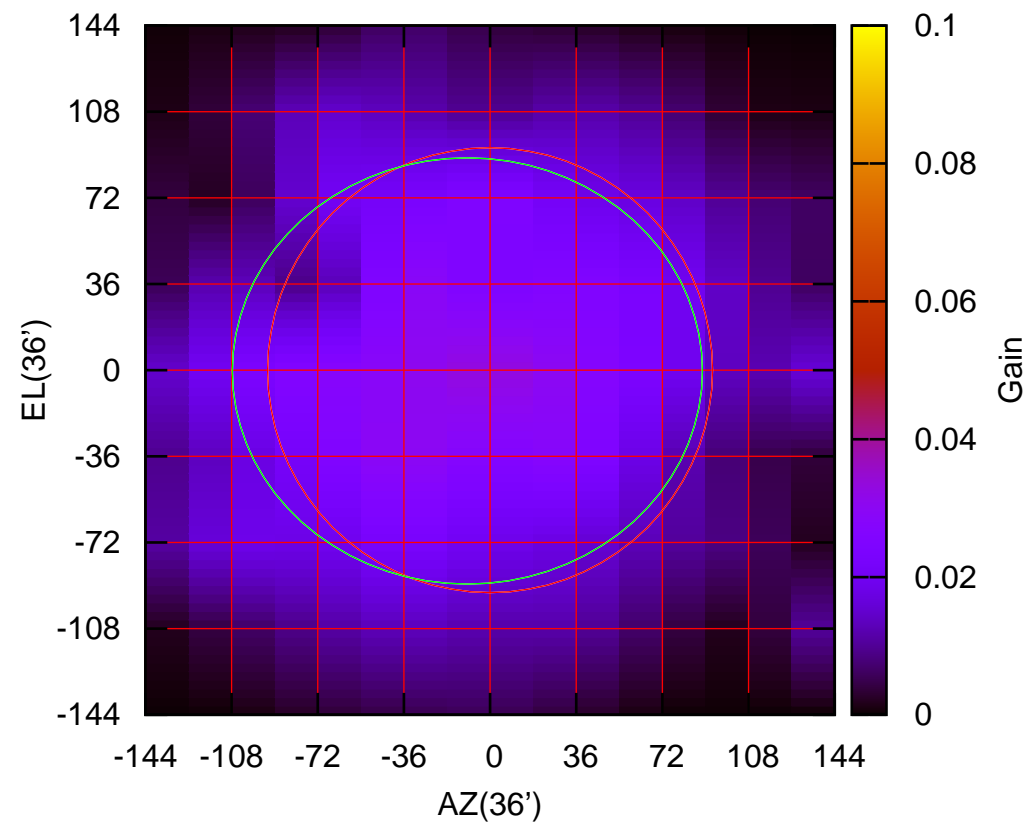
150 MHz.



E06-130 ELOFF= -3.7' ELBEAM=175.9'

E06-175 AZOFF= -9.5' AZBEAM=196.5'

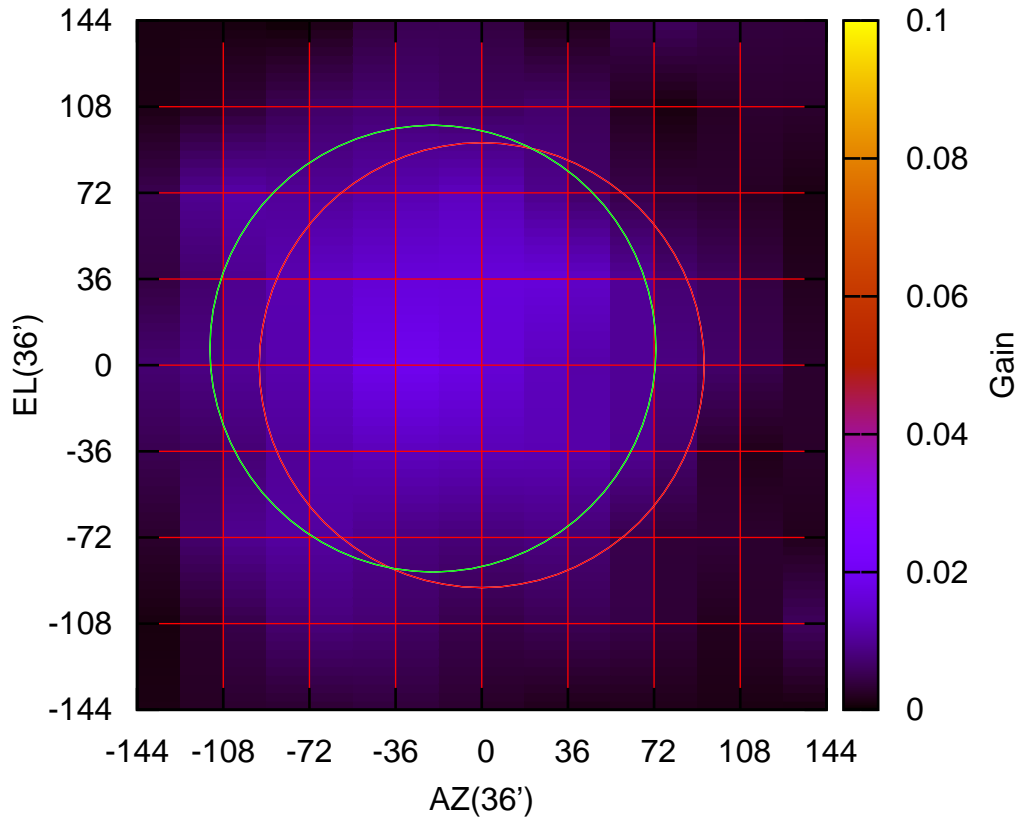
150 MHz.



E06-175 ELOFF= -0.4' ELBEAM=178.2'

S01-130 AZOFF=-20.5' AZBEAM=186.5'

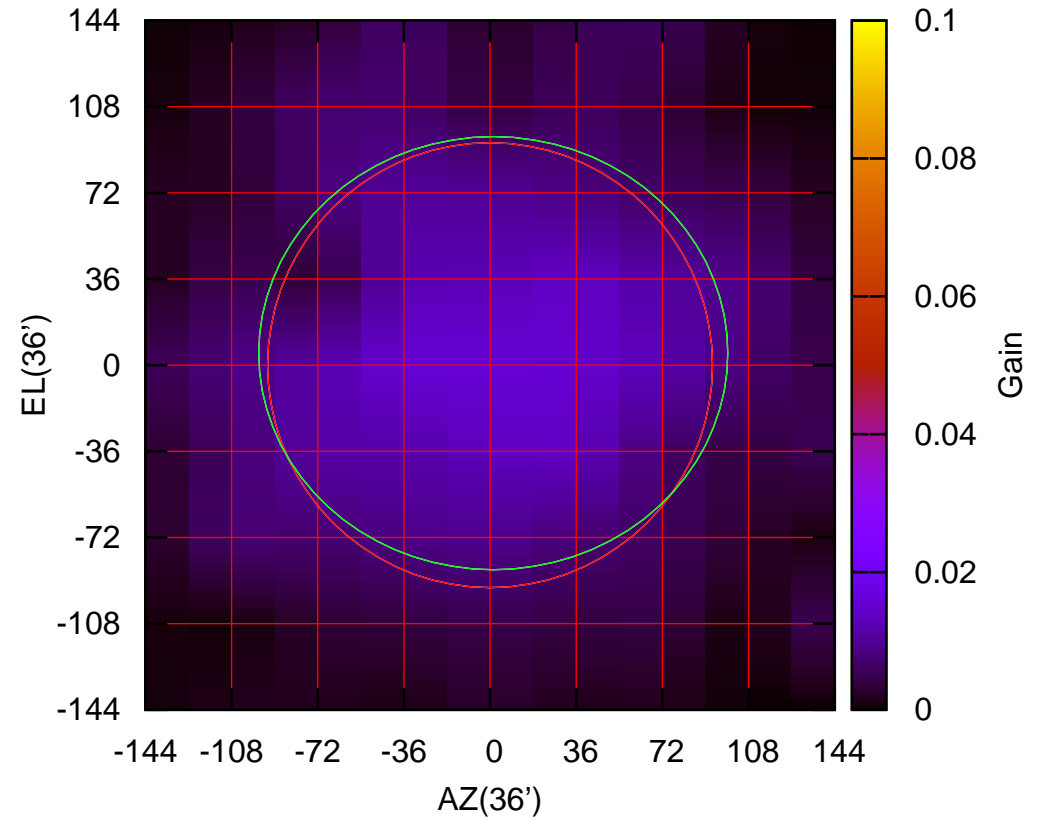
150 MHz.



S01-130 ELOFF= 7.0' ELBEAM=186.8'

S01-175 AZOFF= 1.4' AZBEAM=196.0'

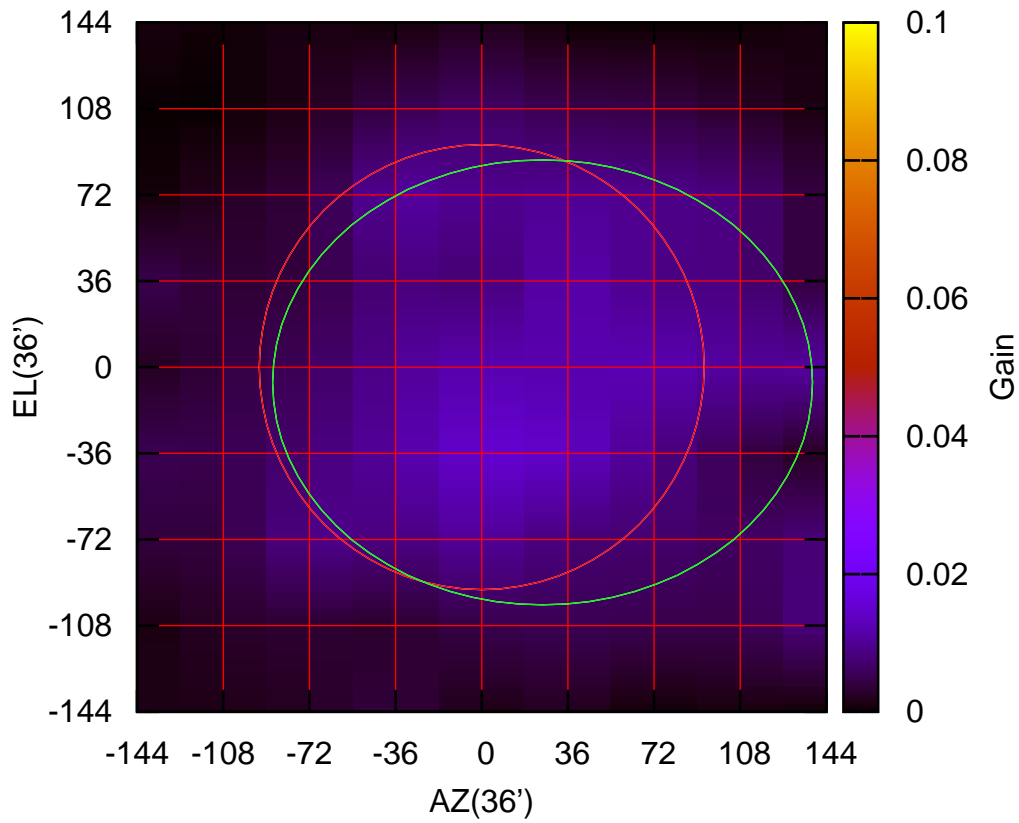
150 MHz.



S01-175 ELOFF= 5.1' ELBEAM=181.0'

S02-130 AZOFF= 25.5' AZBEAM=225.7'

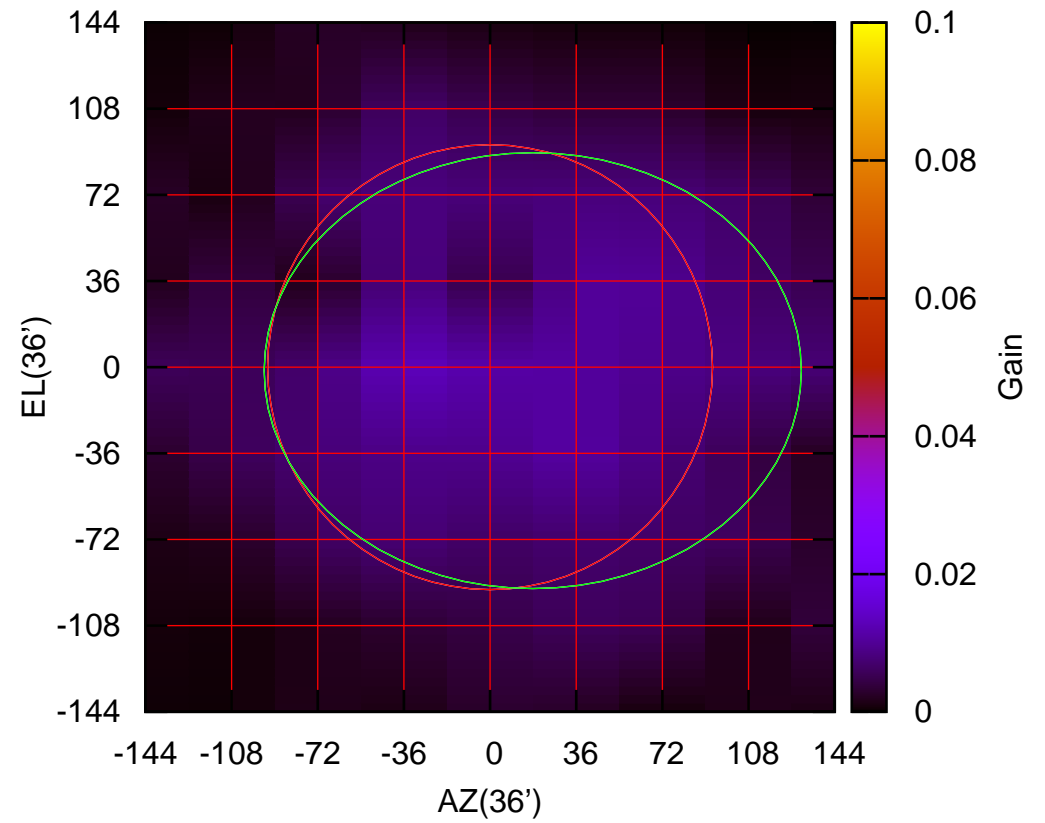
150 MHz.



S02-130 ELOFF= -6.4' ELBEAM=186.1'

S02-175 AZOFF= 17.9' AZBEAM=224.6'

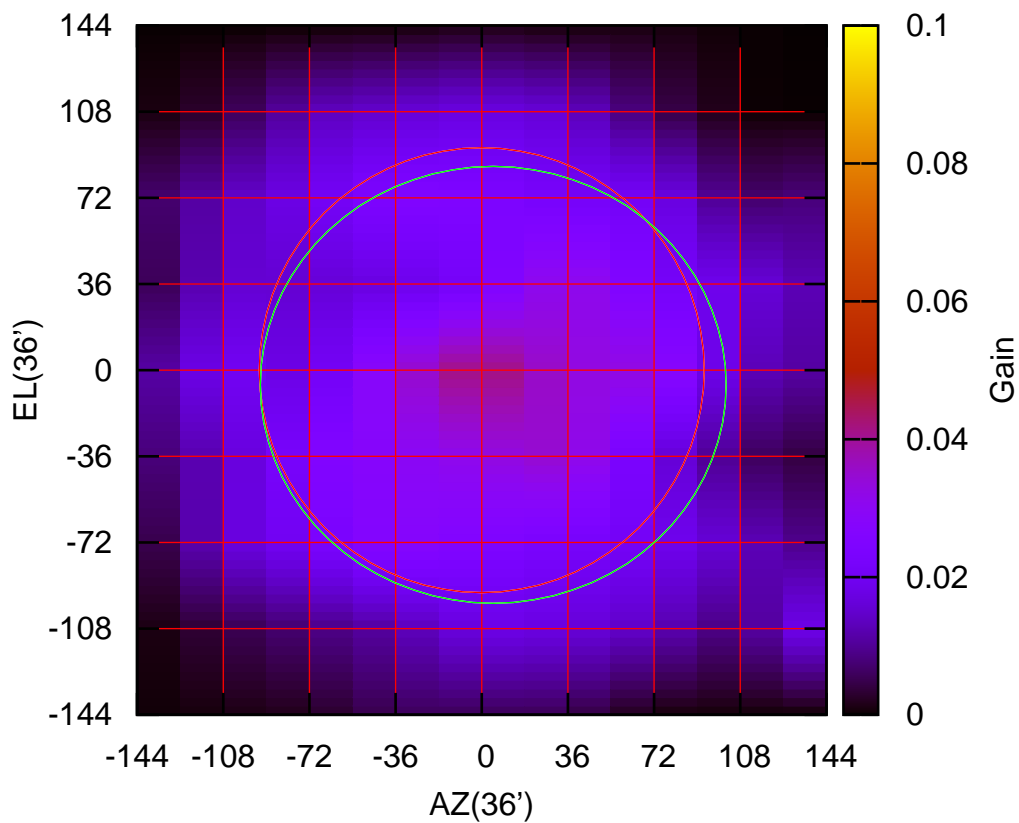
150 MHz.



S02-175 ELOFF= -1.5' ELBEAM=182.3'

S03-130 AZOFF= 4.8' AZBEAM=194.7'

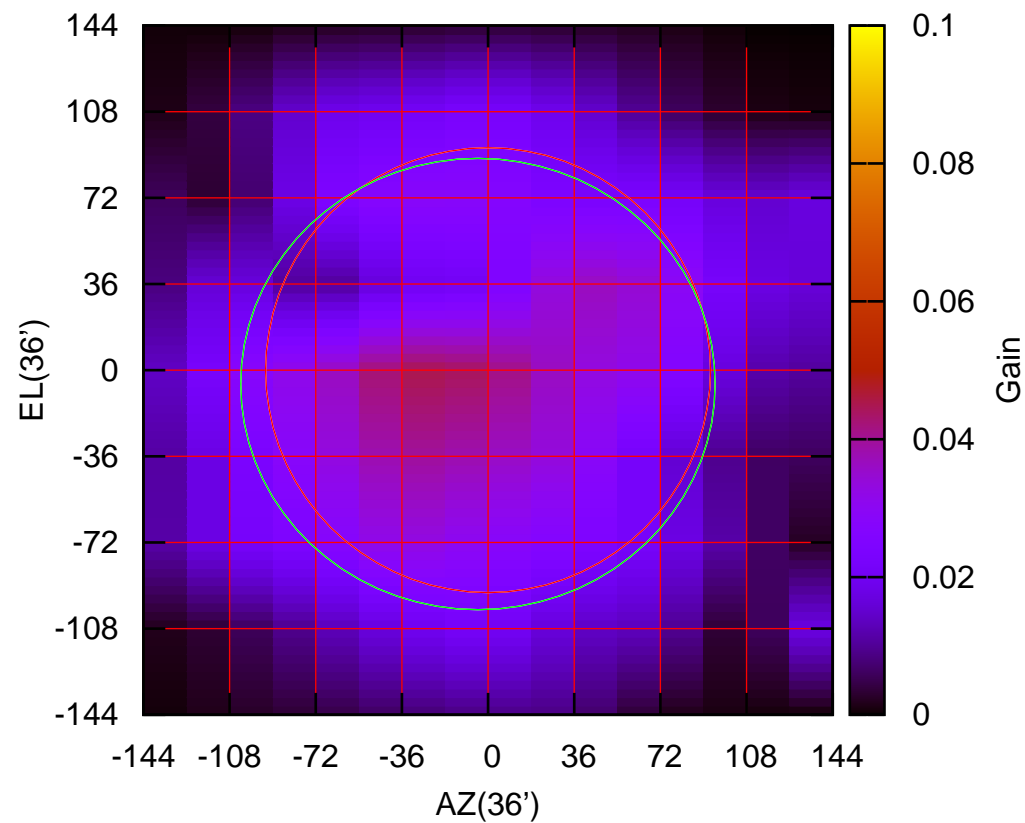
150 MHz.



S03-130 ELOFF= -6.2' ELBEAM=182.6'

S03-175 AZOFF= -4.3' AZBEAM=198.3'

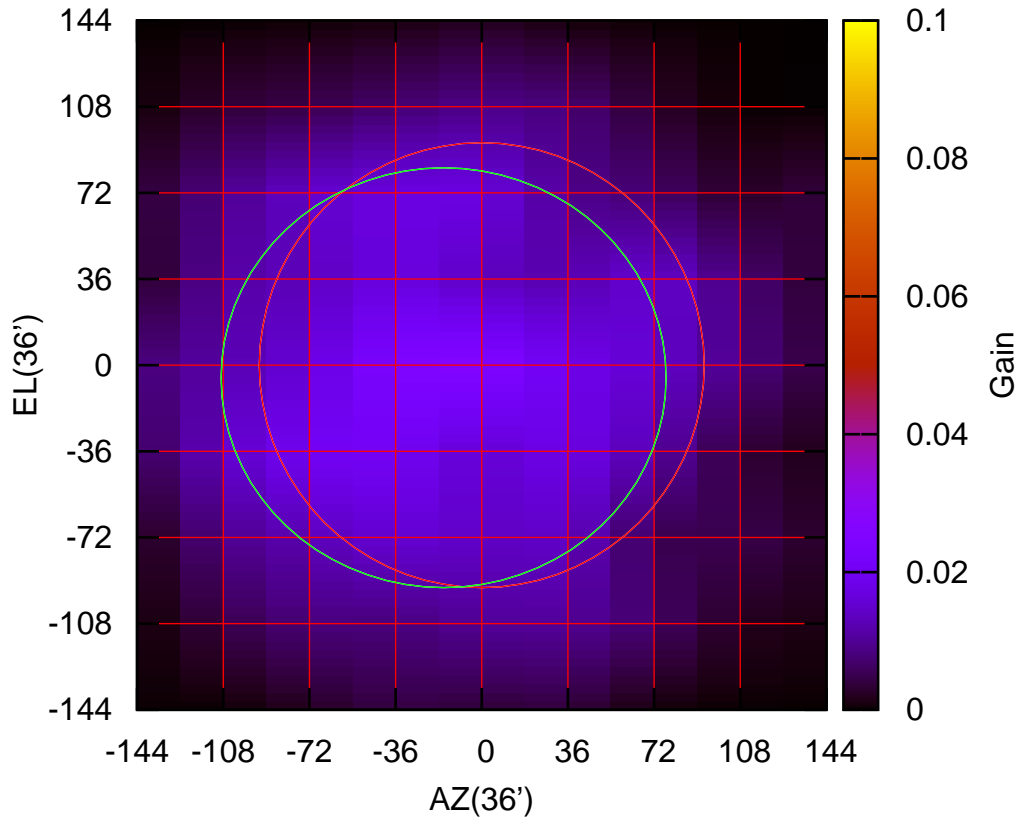
150 MHz.



S03-175 ELOFF= -5.9' ELBEAM=188.7'

S04-130 AZOFF=-16.0' AZBEAM=186.1'

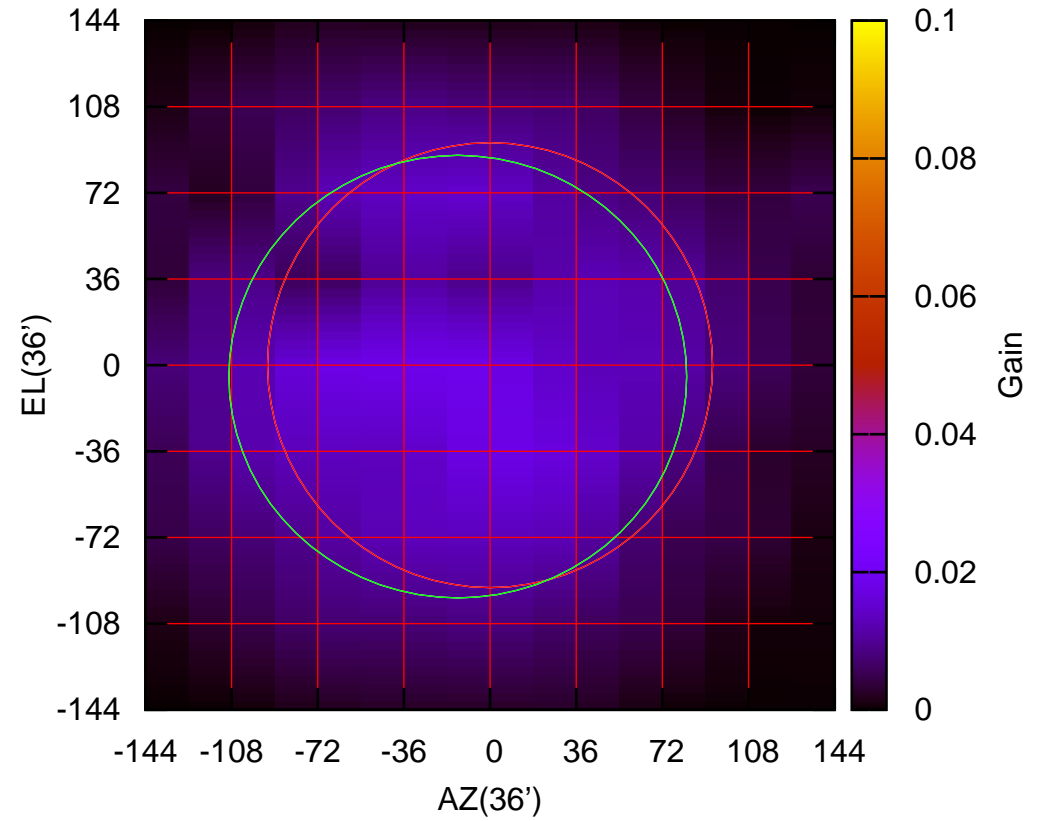
150 MHz.



S04-130 ELOFF= -5.3' ELBEAM=175.5'

S04-175 AZOFF=-13.5' AZBEAM=191.4'

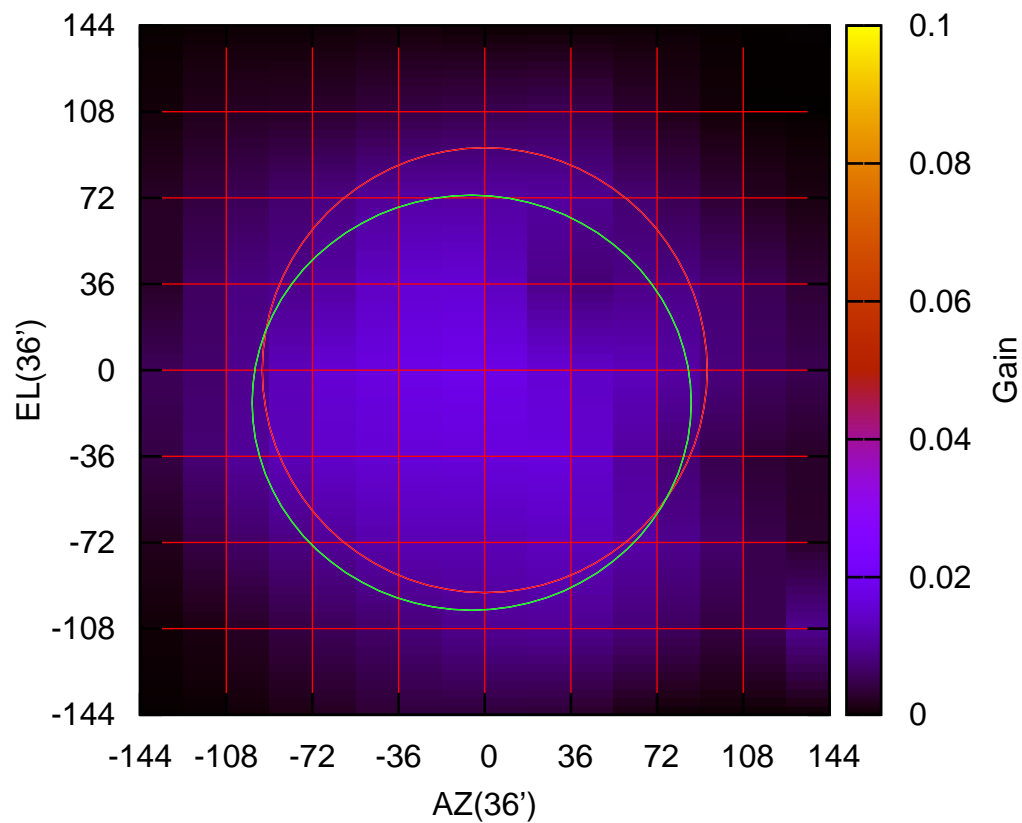
150 MHz.



S04-175 ELOFF= -4.9' ELBEAM=185.0'

S06-130 AZOFF= -5.5' AZBEAM=183.6'

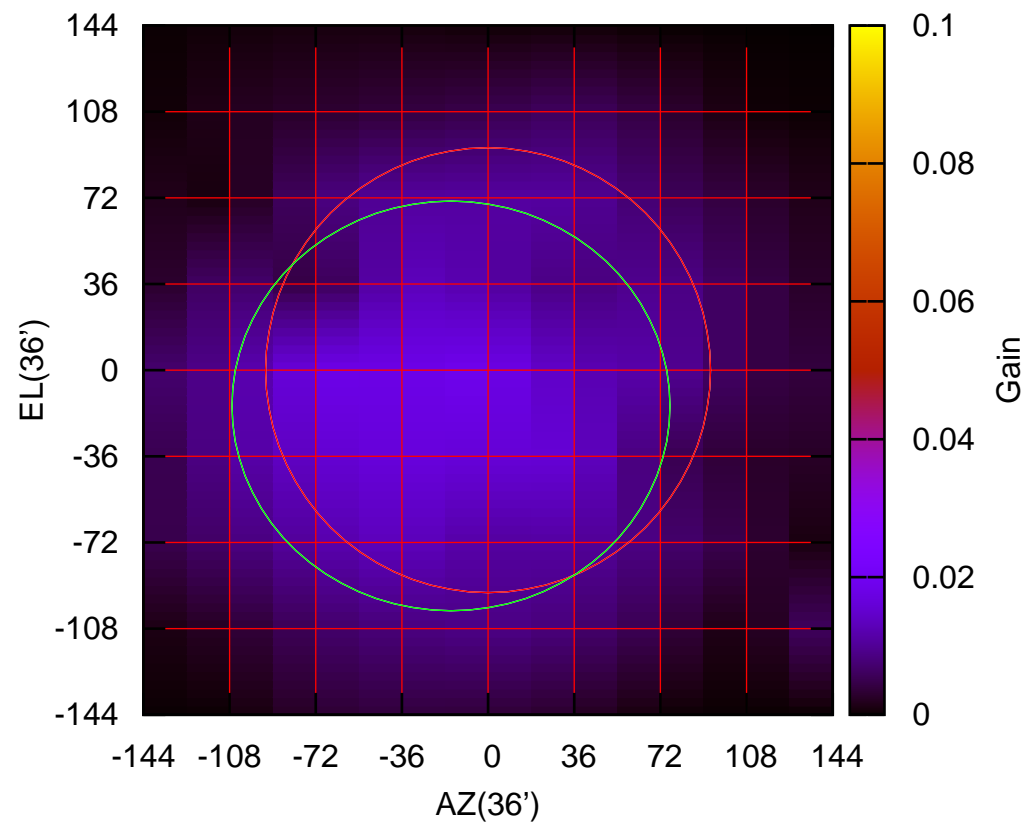
150 MHz.



S06-130 ELOFF=-13.6' ELBEAM=173.4'

S06-175 AZOFF=-15.6' AZBEAM=183.2'

150 MHz.



S06-175 ELOFF=-15.0' ELBEAM=171.3'