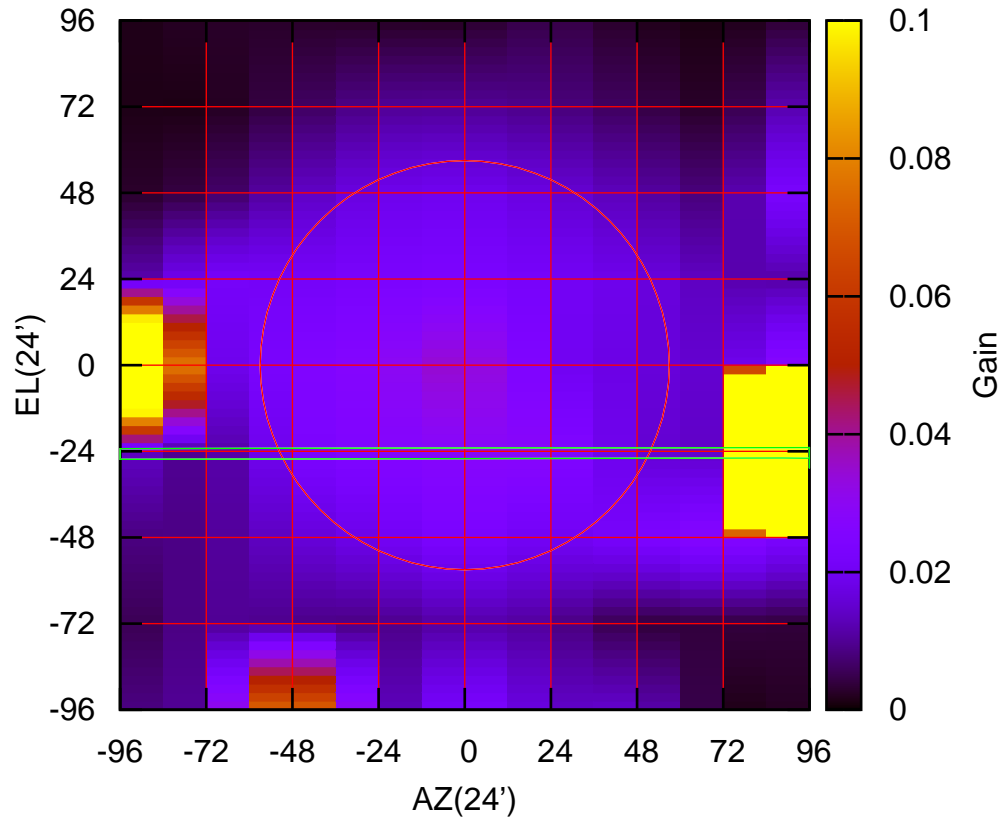


C00-130 AZOFF=526.5' AZBEAM=932.0'

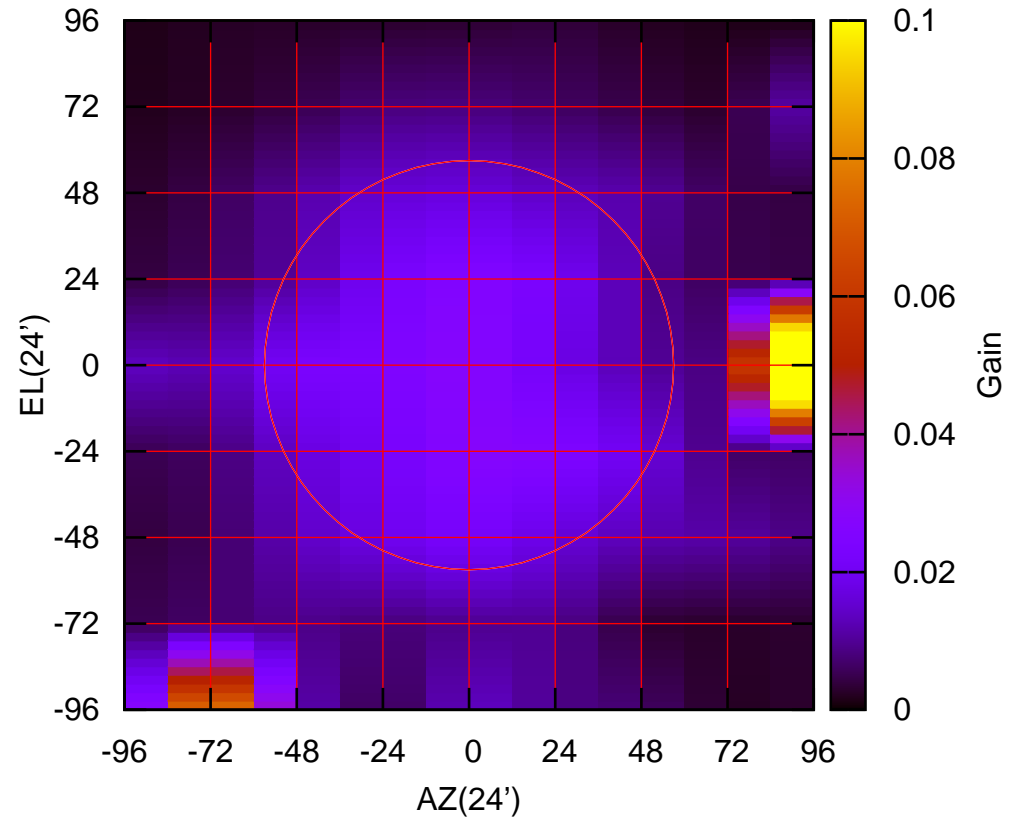
235 MHz.



C00-130 ELOFF=-24.9' ELBEAM= -5.8'

C00-175 AZOFF=220.3' AZBEAM= 75.2'

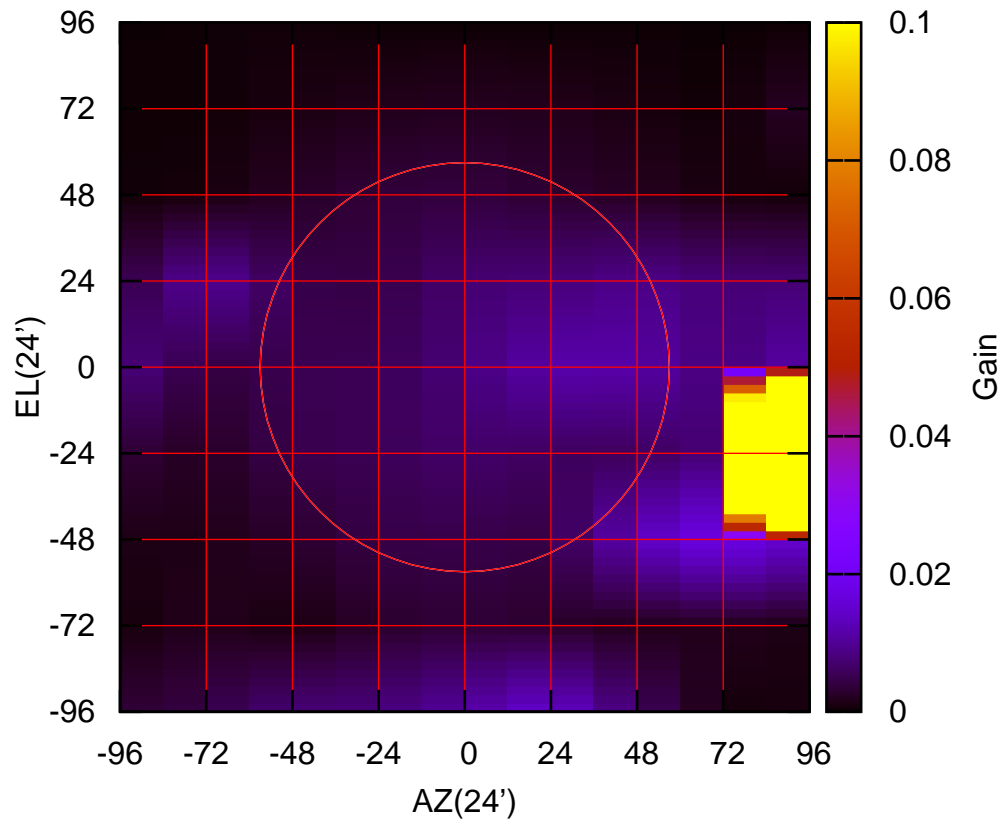
235 MHz.



C00-175 ELOFF= -0.6' ELBEAM= 20.8'

C01-130 AZOFF=170.0' AZBEAM=-48.7'

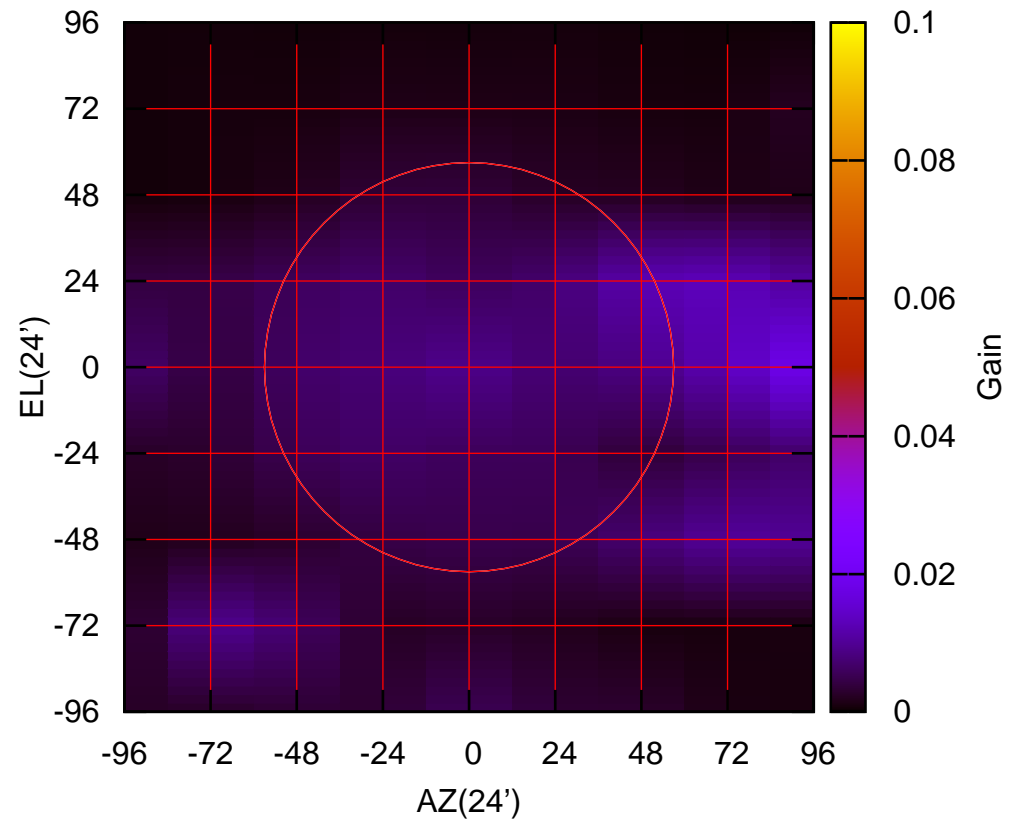
235 MHz.



C01-130 ELOFF=-24.2' ELBEAM=-19.1'

C01-175 AZOFF=789.3' AZBEAM=904.2'

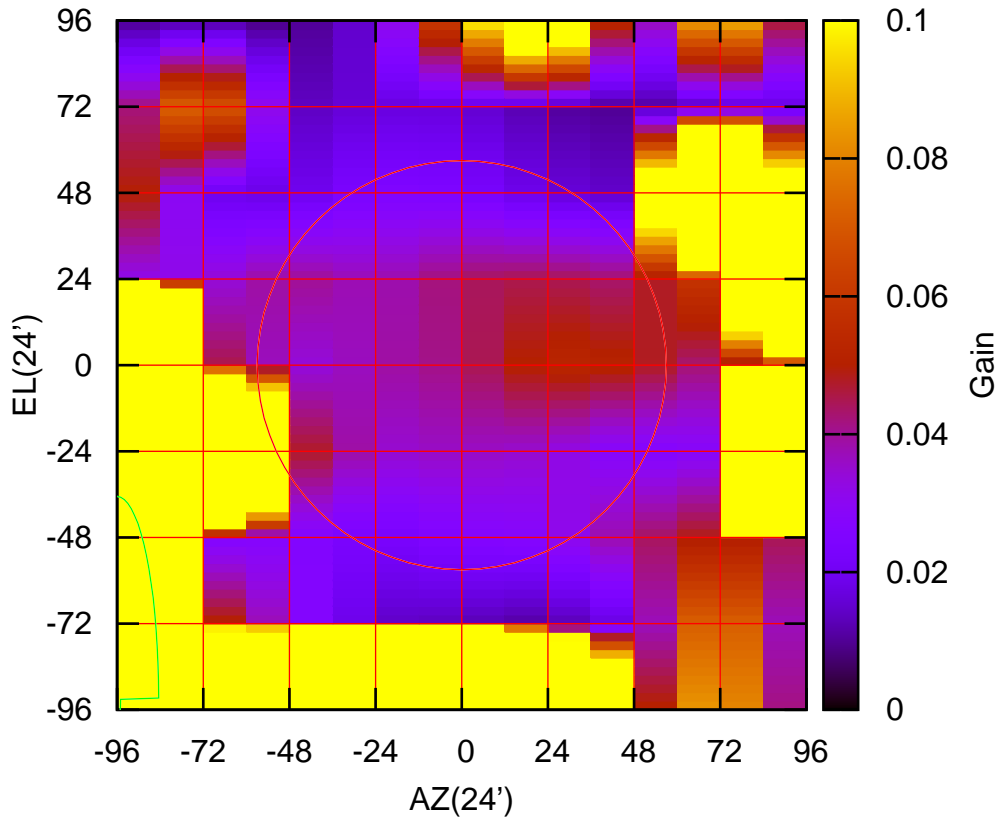
235 MHz.



C01-175 ELOFF= -4.9' ELBEAM= 97.0'

C02-130 AZOFF=-106.6' AZBEAM= 23.2'

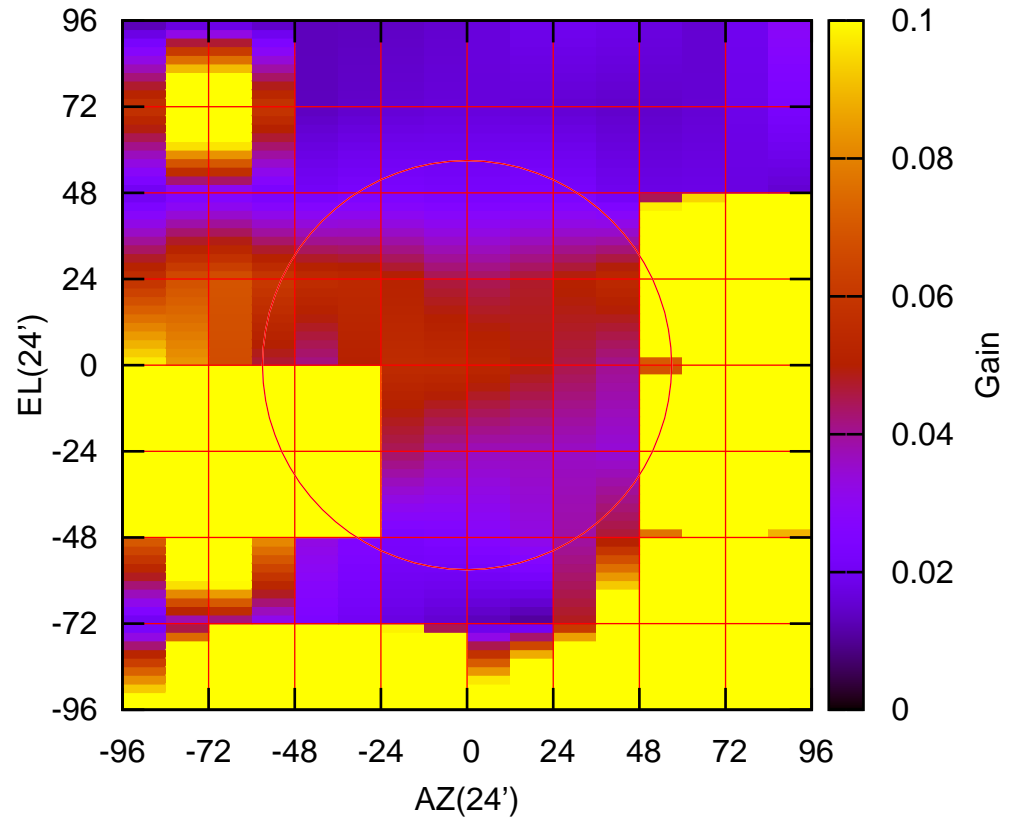
235 MHz.



C02-130 ELOFF=-88.3' ELBEAM=112.4'

C02-175 AZOFF=-45.1' AZBEAM= 22.0'

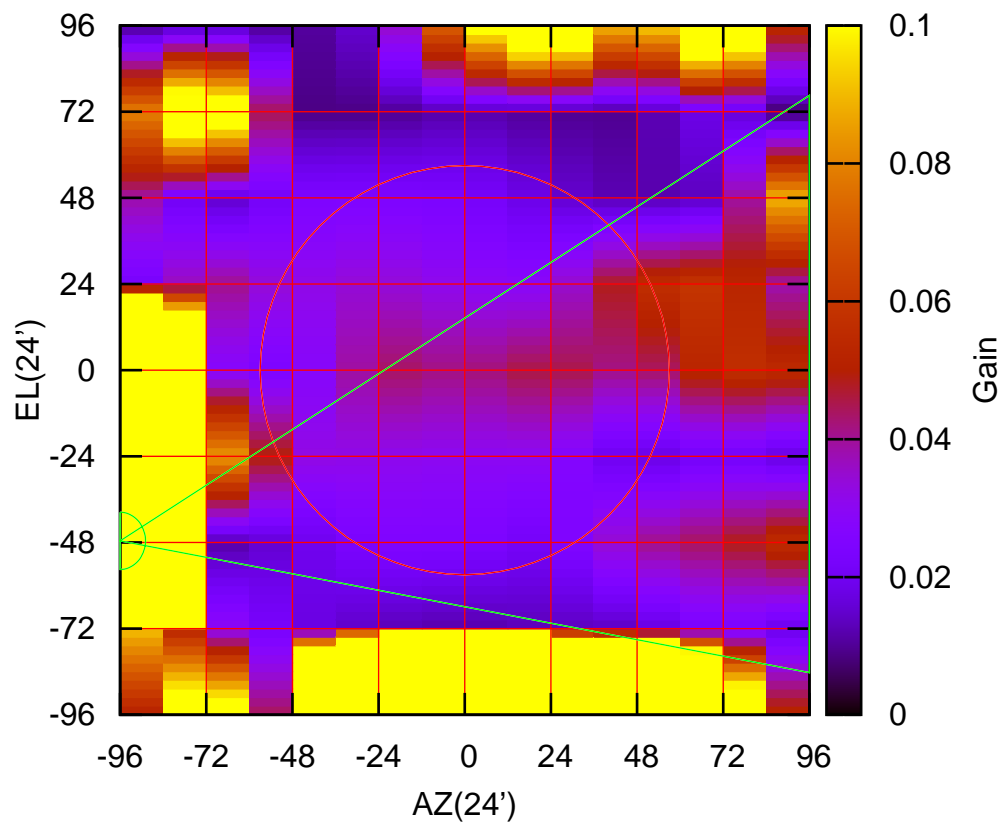
235 MHz.



C02-175 ELOFF=-112.1' ELBEAM= 23.8'

C03-130 AZOFF=-96.0' AZBEAM= 14.2'

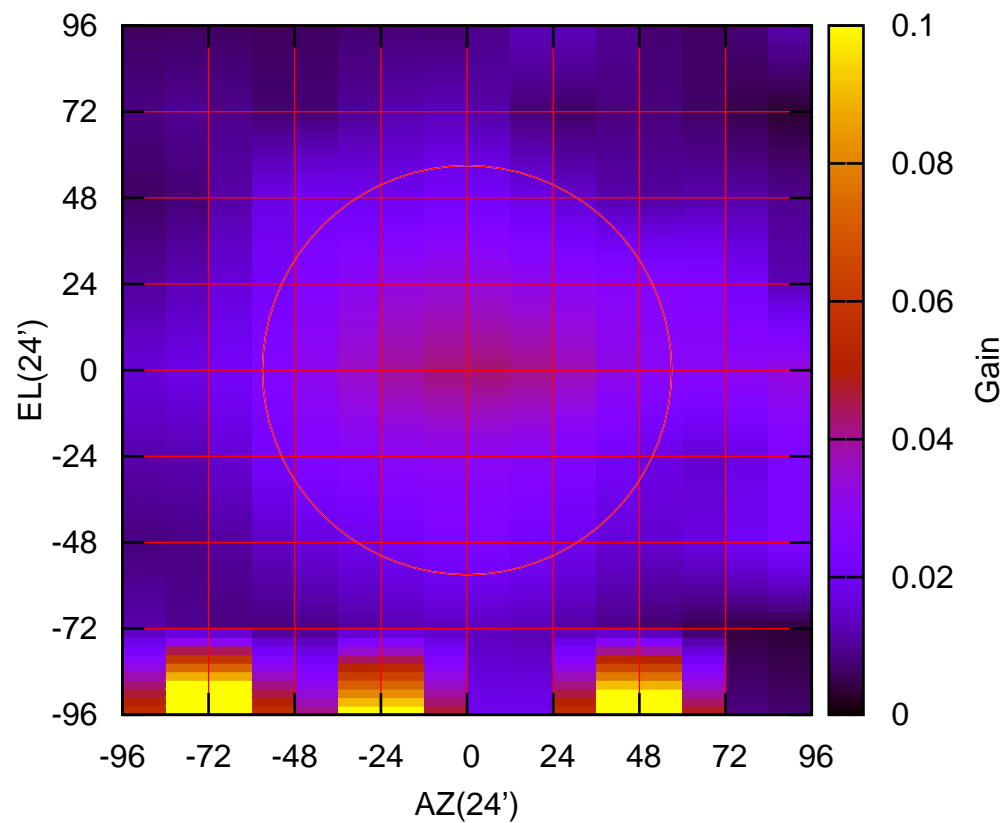
235 MHz.



C03-130 ELOFF=-47.6' ELBEAM= 16.0'

C03-175 AZOFF=-15.4' AZBEAM=211.9'

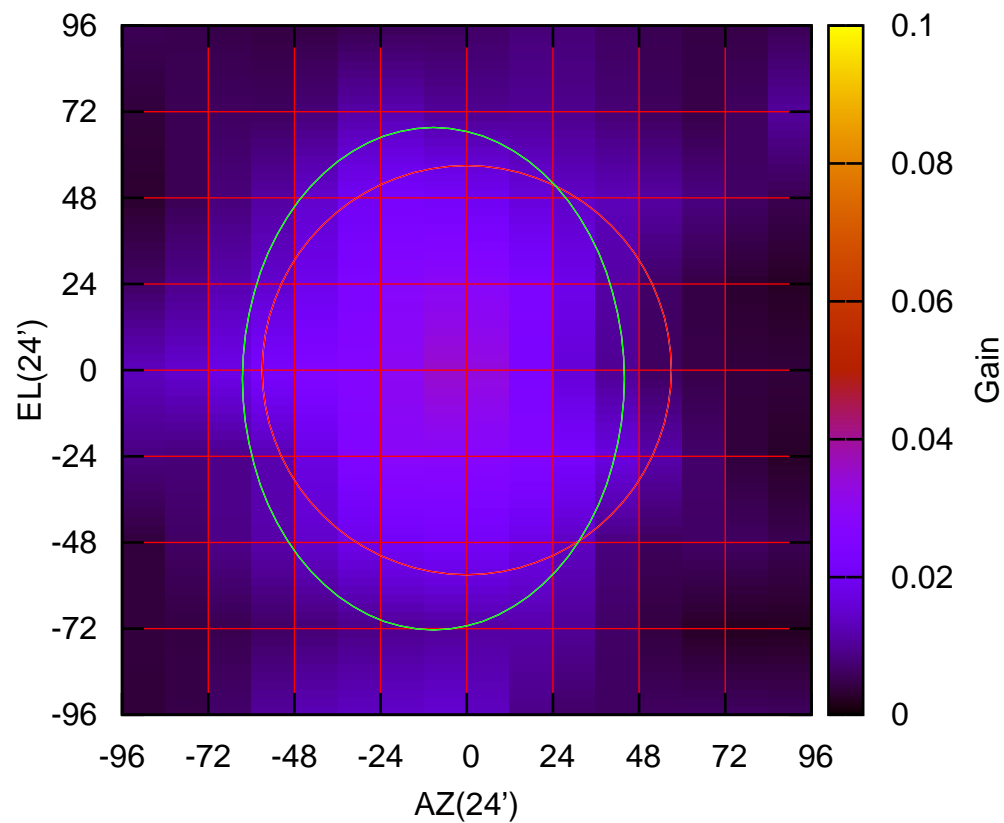
235 MHz.



C03-175 ELOFF=-1188.4' ELBEAM=826.7'

C04-130 AZOFF= -9.3' AZBEAM=106.4'

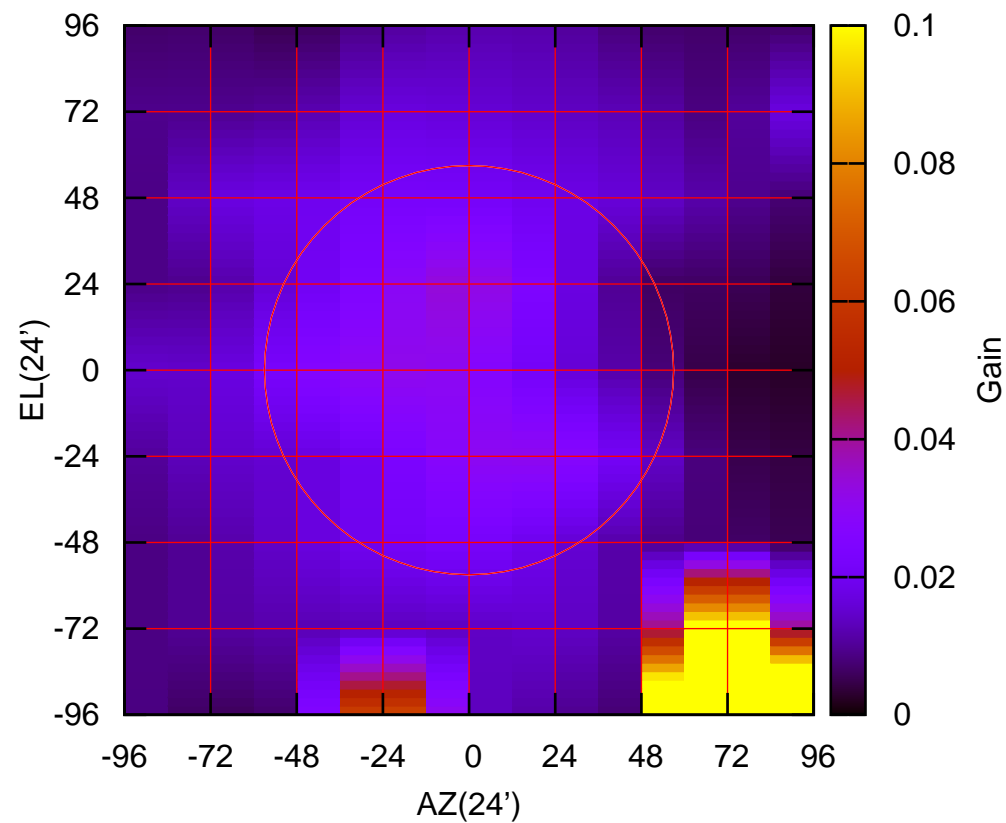
235 MHz.



C04-130 ELOFF= -2.4' ELBEAM=140.0'

C04-175 AZOFF= 86.6' AZBEAM=186.5'

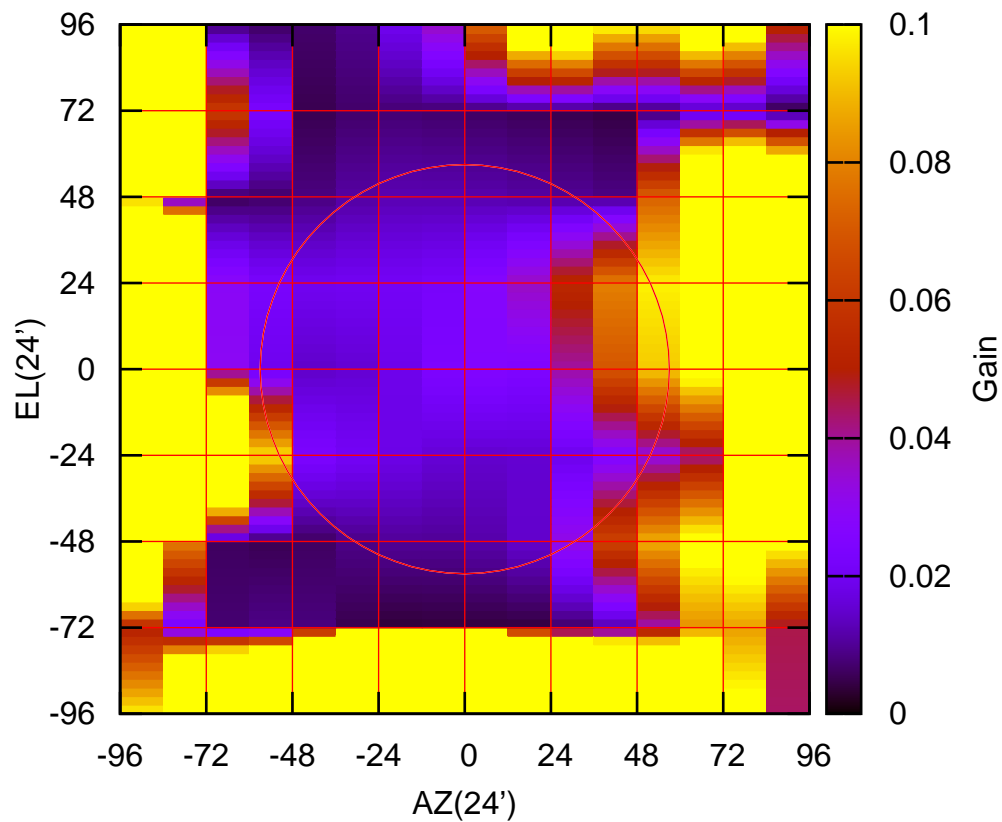
235 MHz.



C04-175 ELOFF=-3239.7' ELBEAM=1766.2'

C05-130 AZOFF=-116.5' AZBEAM= 27.3'

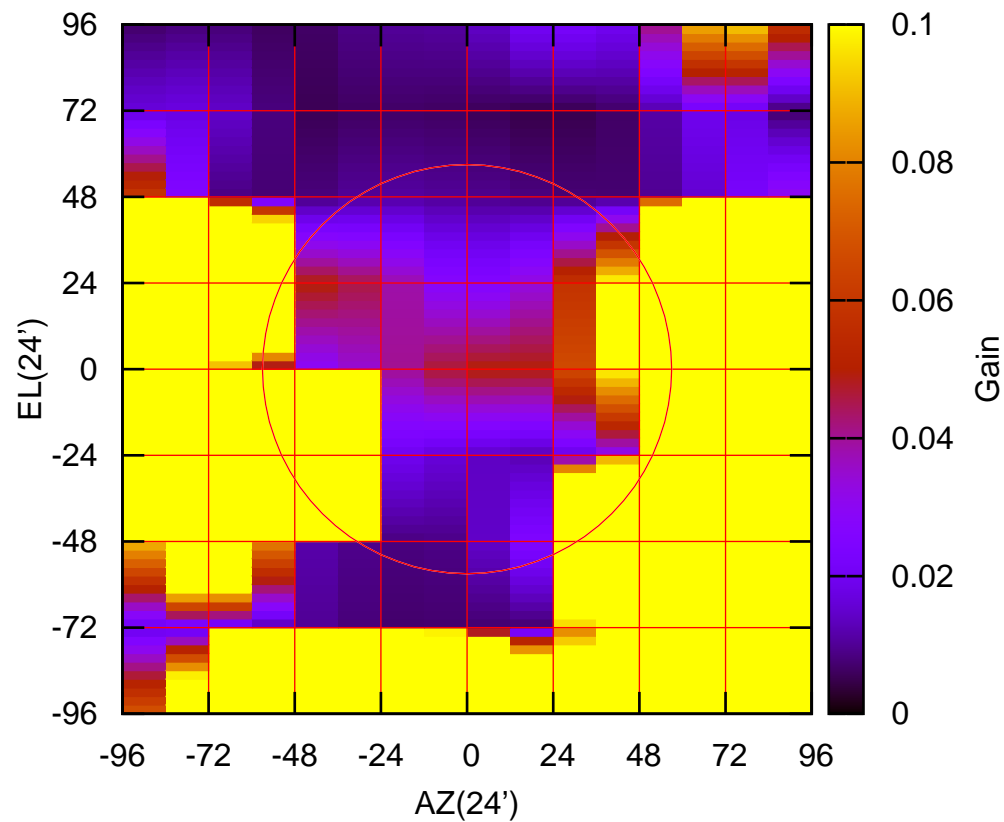
235 MHz.



C05-130 ELOFF= 71.8' ELBEAM= 11.8'

C05-175 AZOFF=-42.2' AZBEAM= 23.1'

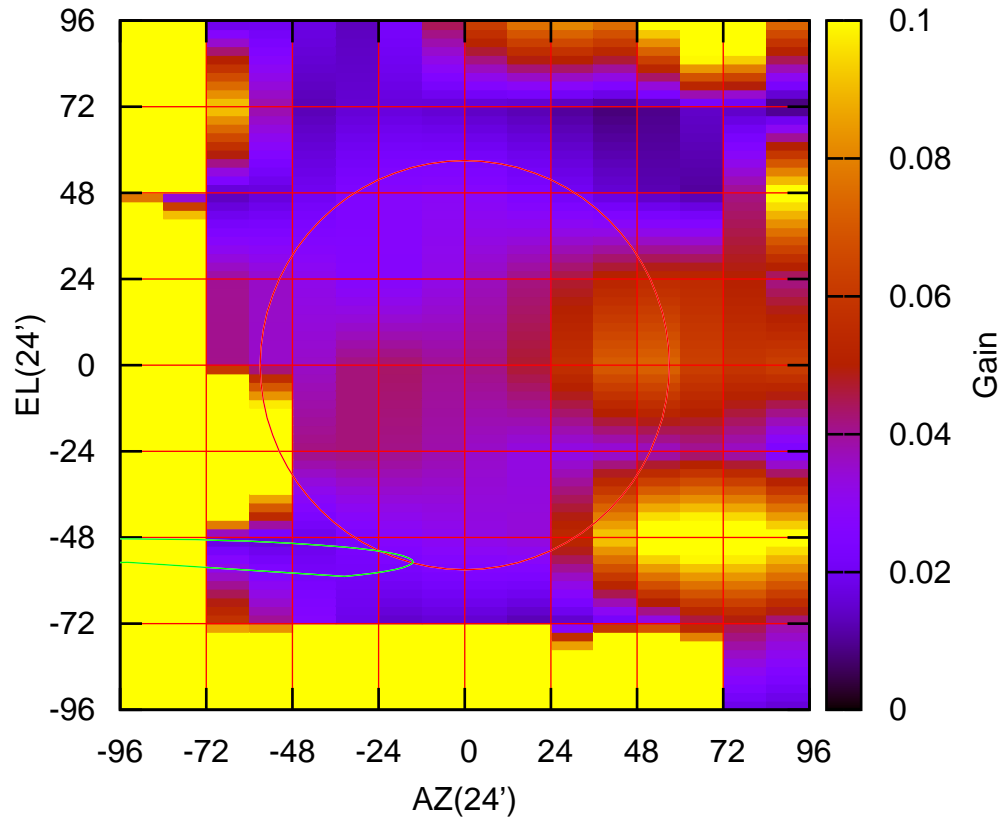
235 MHz.



C05-175 ELOFF=-123.6' ELBEAM= 27.4'

C06-130 AZOFF=-151.7' AZBEAM=163.2'

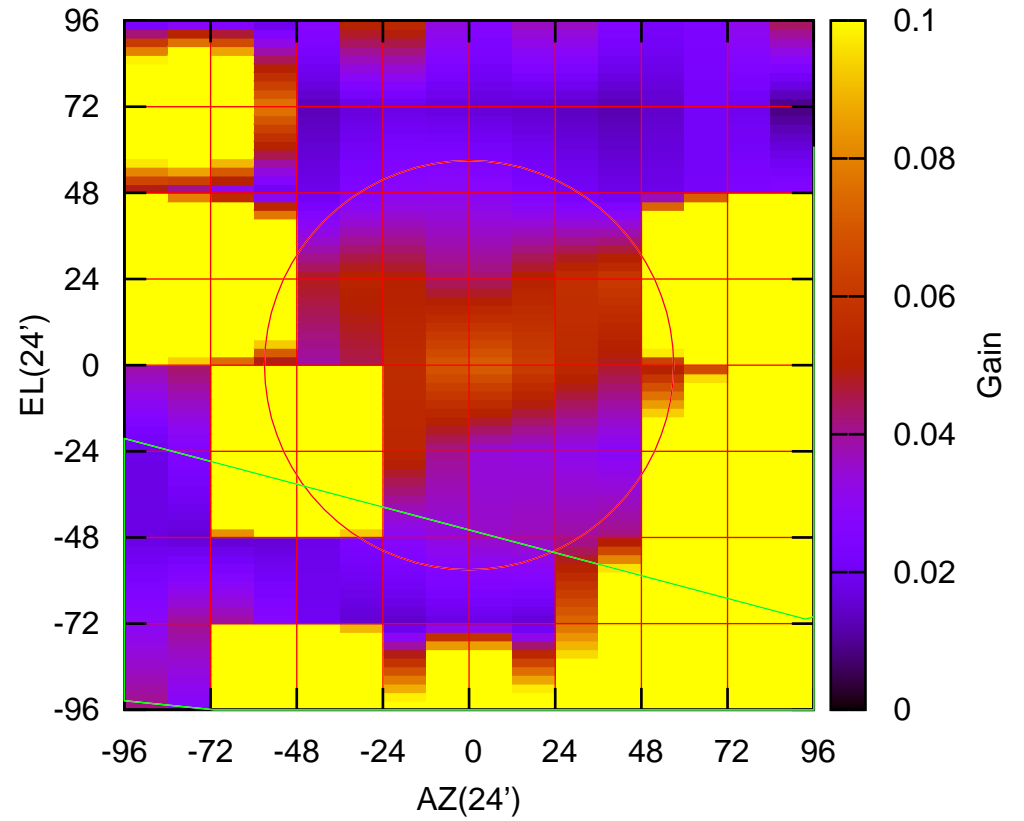
235 MHz.



C06-130 ELOFF=-50.5' ELBEAM= 12.8'

C06-175 AZOFF=389.6' AZBEAM=837.0'

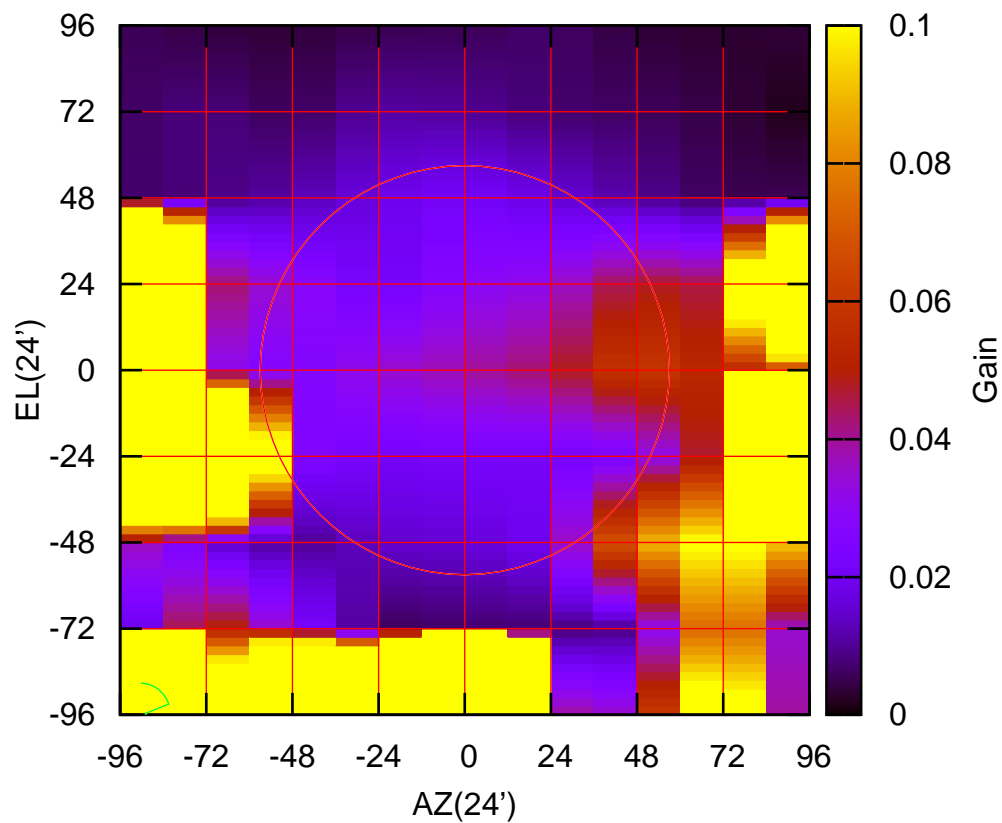
235 MHz.



C06-175 ELOFF=-164.2' ELBEAM=264.5'

C08-130 AZOFF=-96.9' AZBEAM= 16.6'

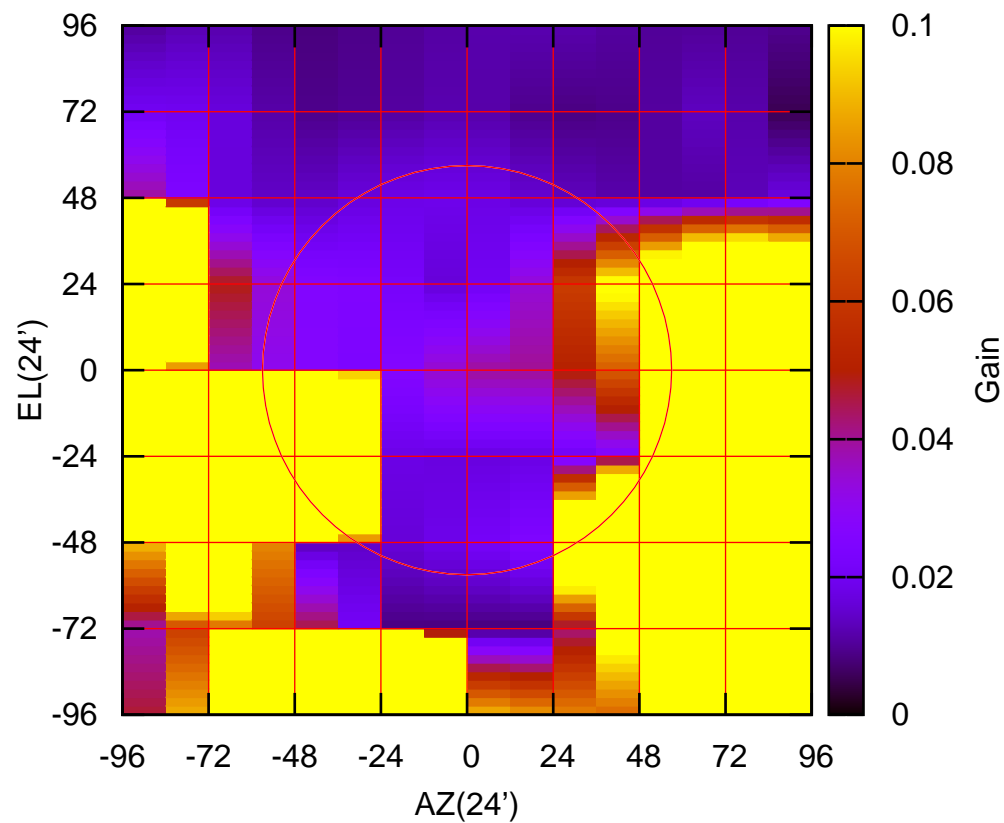
235 MHz.



C08-130 ELOFF=-97.9' ELBEAM= 17.6'

C08-175 AZOFF=-40.2' AZBEAM= 25.2'

235 MHz.

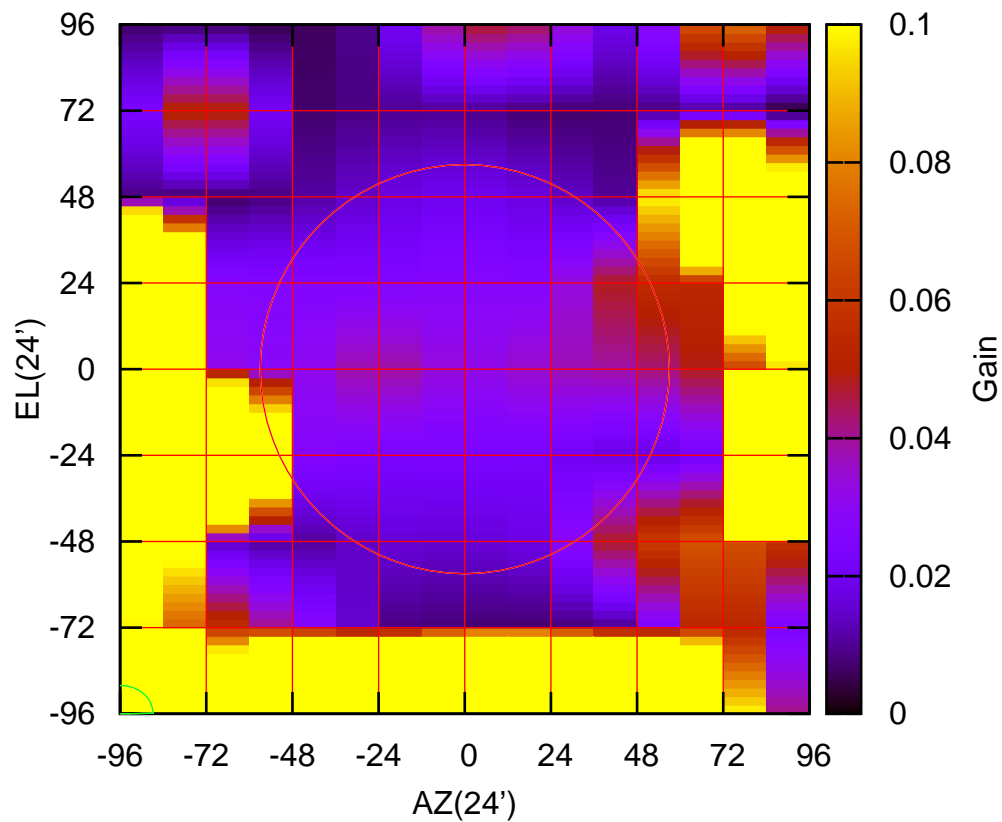


C08-175 ELOFF=-133.0' ELBEAM= 36.4'



C09-130 AZOFF=-97.2' AZBEAM= 18.4'

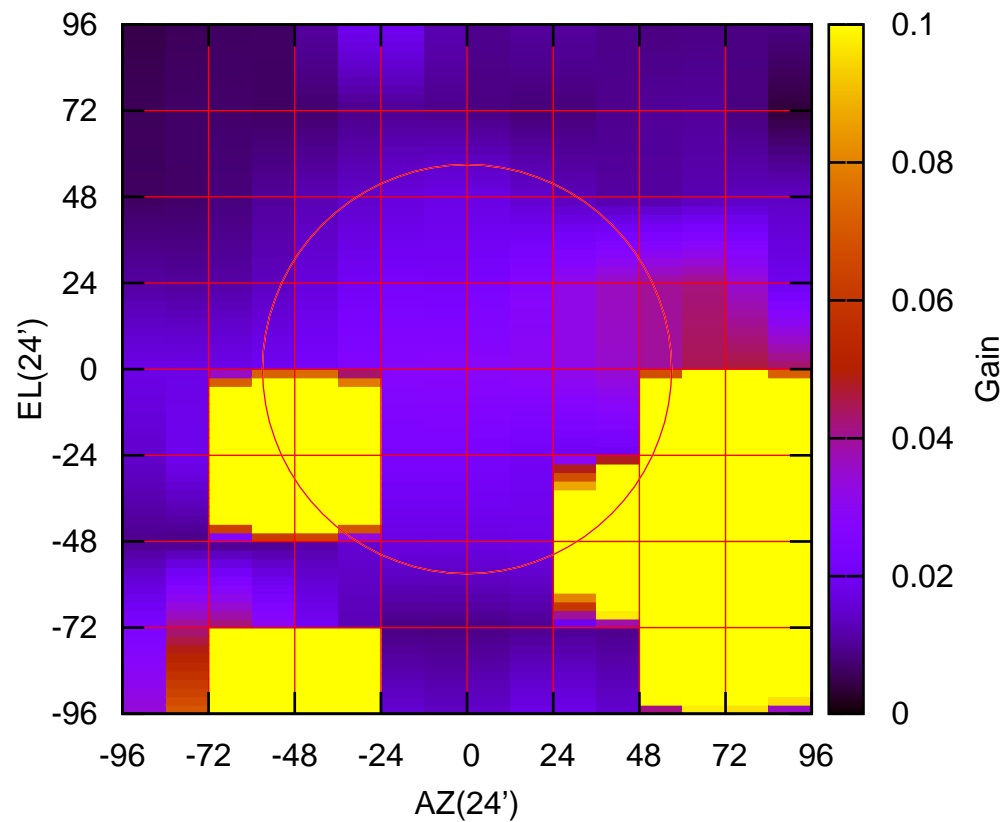
235 MHz.



C09-130 ELOFF=-94.4' ELBEAM= 15.6'

C09-175 AZOFF=-49.9' AZBEAM= 17.2'

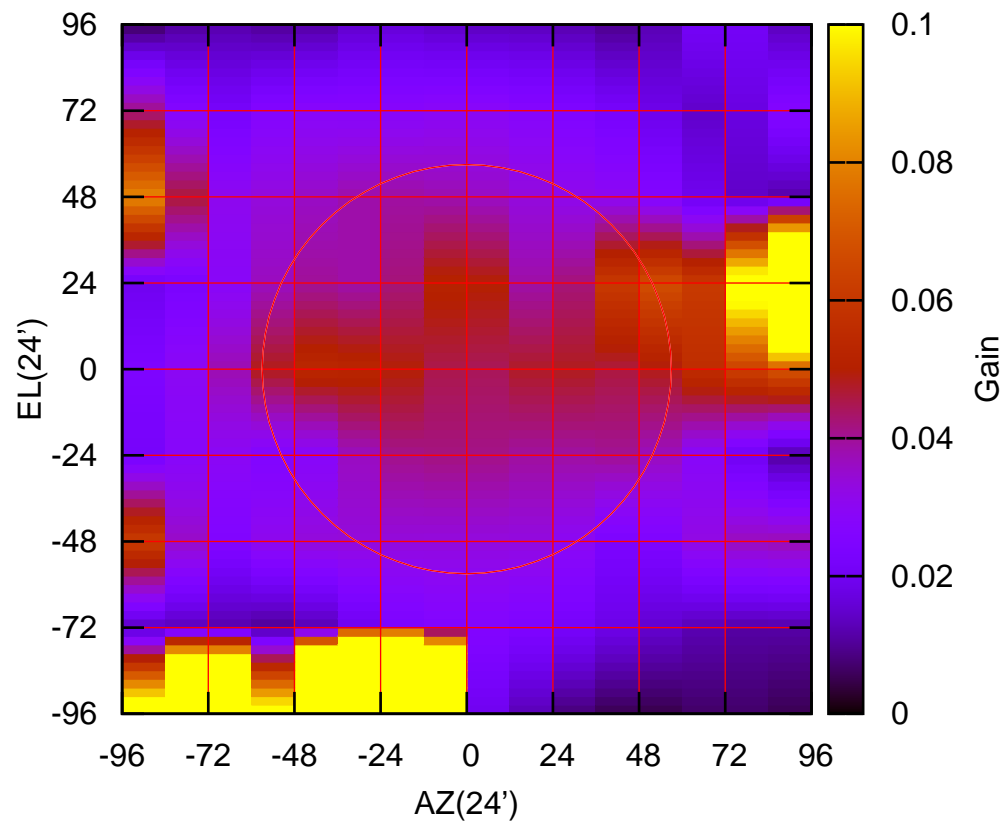
235 MHz.



C09-175 ELOFF=-132.5' ELBEAM= 33.2'

C10-130 AZOFF=-23.9' AZBEAM= 19.5'

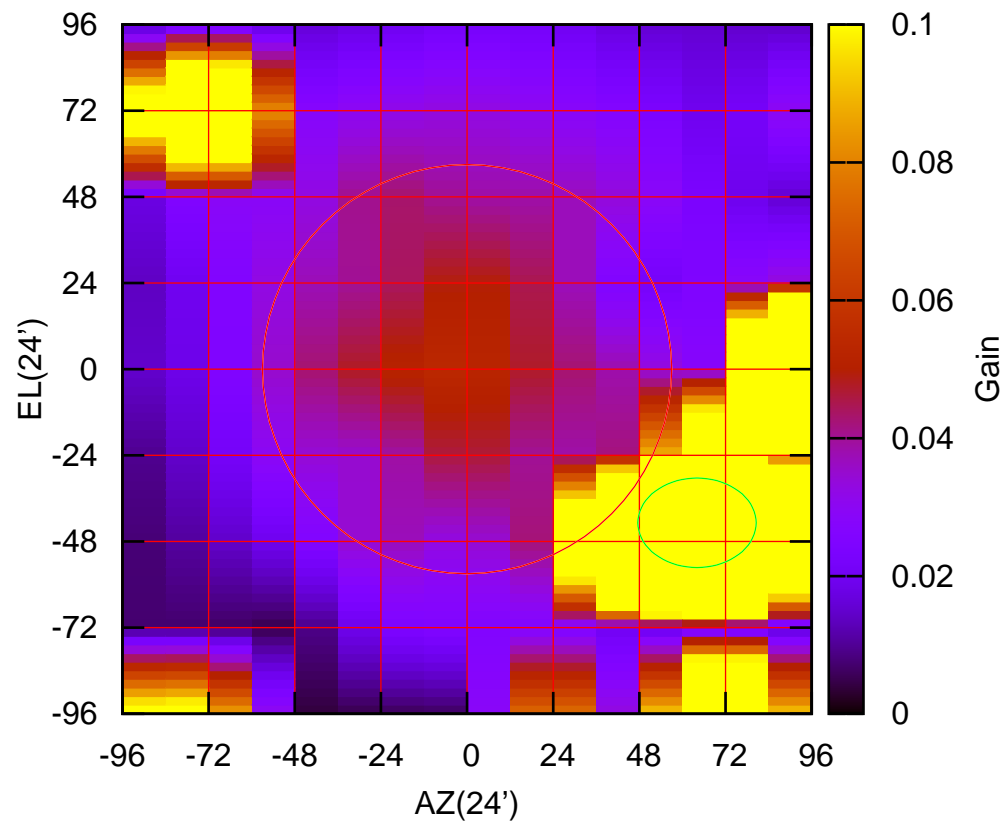
235 MHz.



C10-130 ELOFF=-148.3' ELBEAM= 45.3'

C10-175 AZOFF= 64.1' AZBEAM= 33.0'

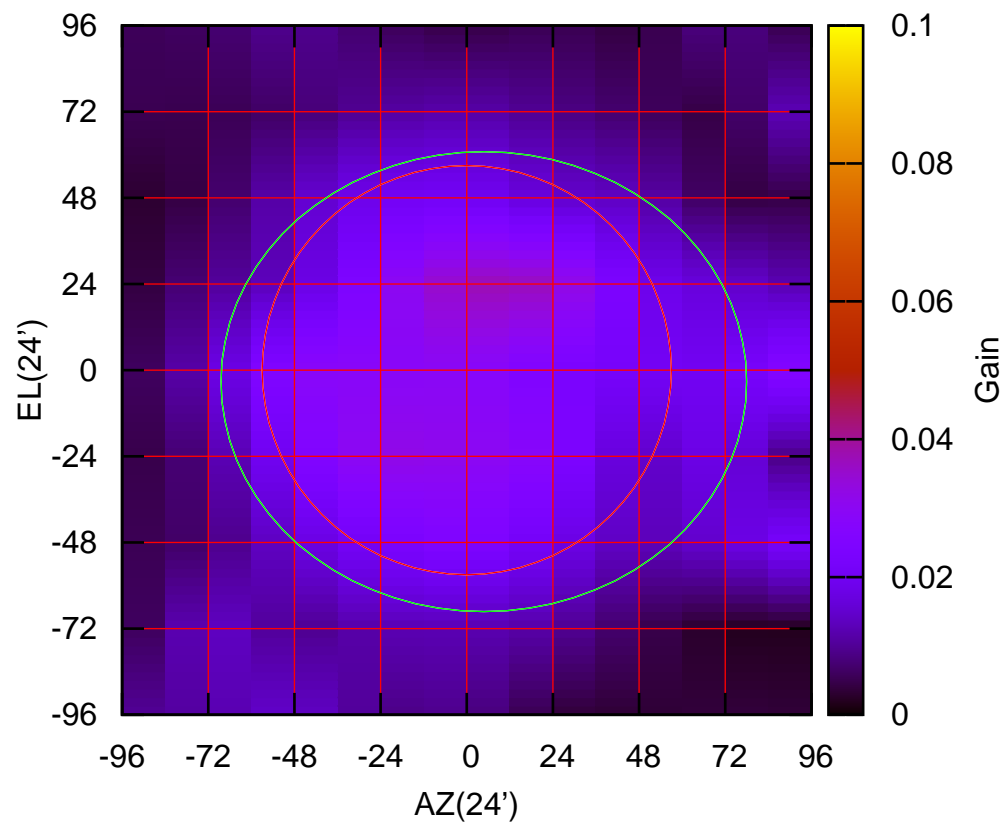
235 MHz.



C10-175 ELOFF=-42.8' ELBEAM= 25.0'

C11-130 AZOFF= 4.8' AZBEAM=146.5'

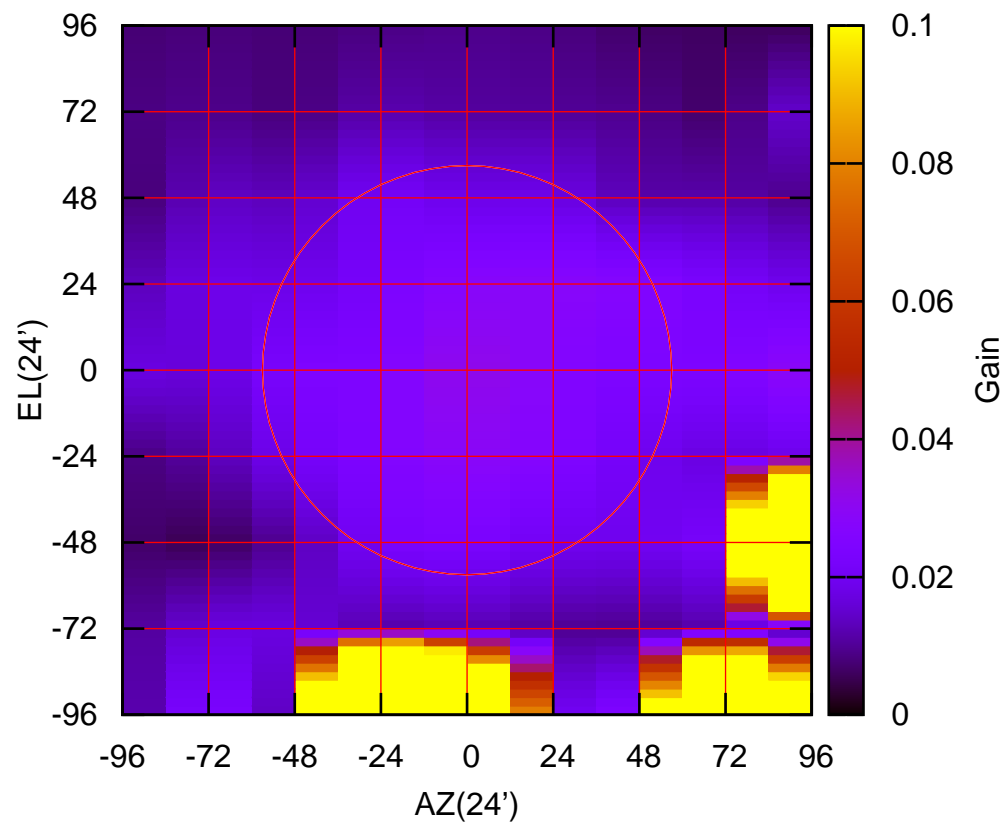
235 MHz.



C11-130 ELOFF= -3.2' ELBEAM=128.2'

C11-175 AZOFF= 7.1' AZBEAM=143.9'

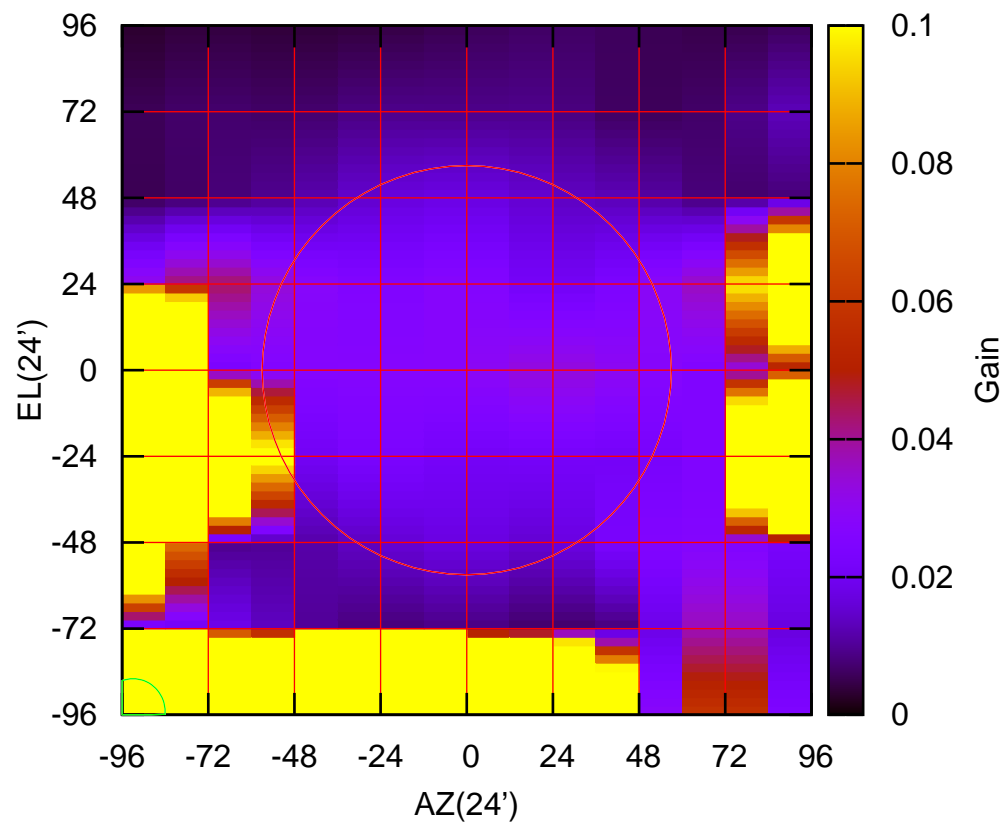
235 MHz.



C11-175 ELOFF=-291.4' ELBEAM=115.0'

C12-130 AZOFF=-93.0' AZBEAM= 17.9'

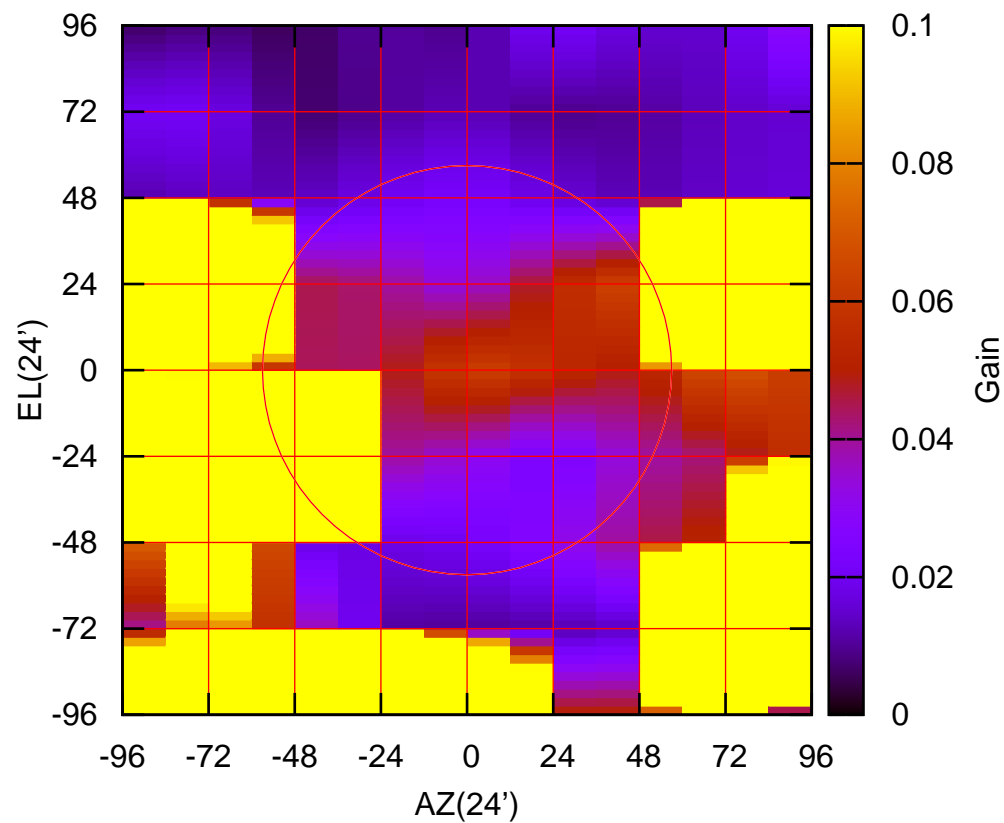
235 MHz.



C12-130 ELOFF=-95.1' ELBEAM= 18.4'

C12-175 AZOFF=-45.9' AZBEAM= 21.4'

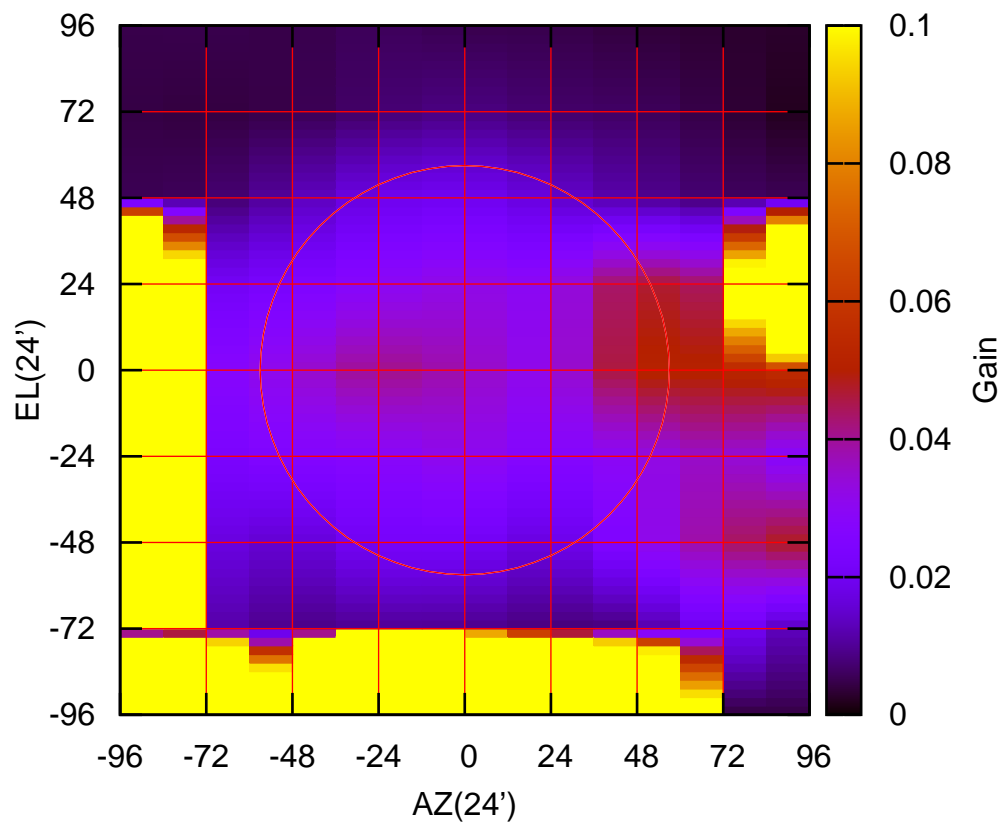
235 MHz.



C12-175 ELOFF=-115.6' ELBEAM= 24.8'

C13-130 AZOFF=-113.5' AZBEAM= 22.8'

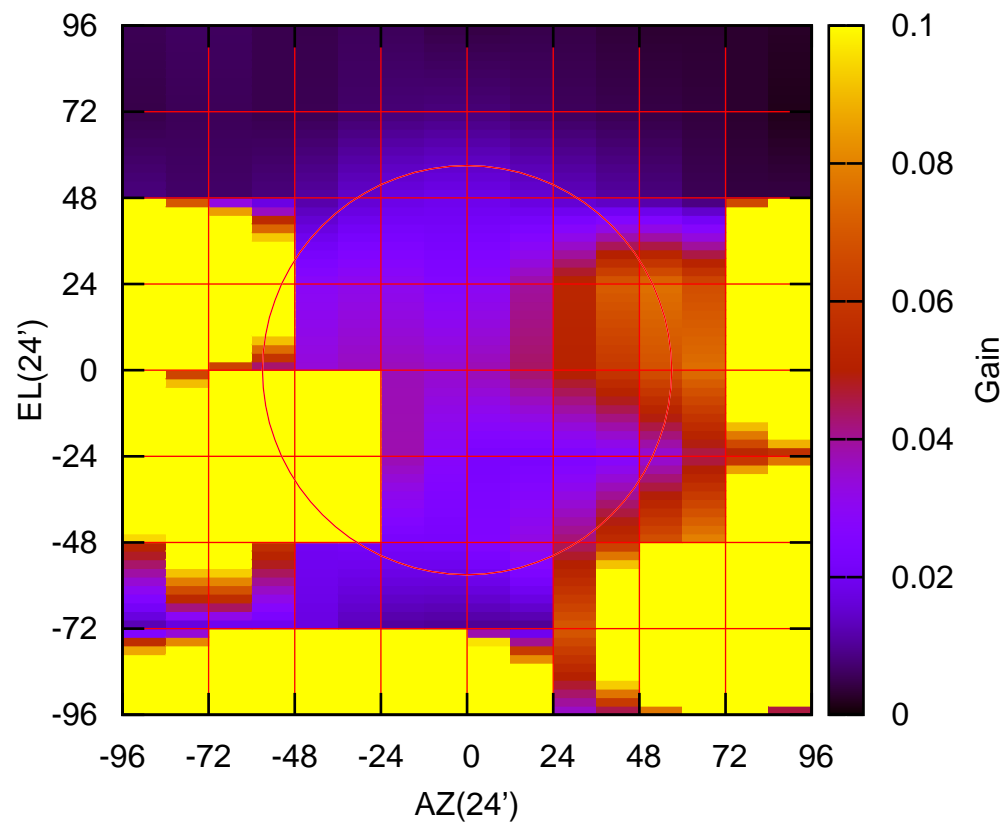
235 MHz.



C13-130 ELOFF=-44.6' ELBEAM= 15.5'

C13-175 AZOFF=-41.8' AZBEAM= 26.7'

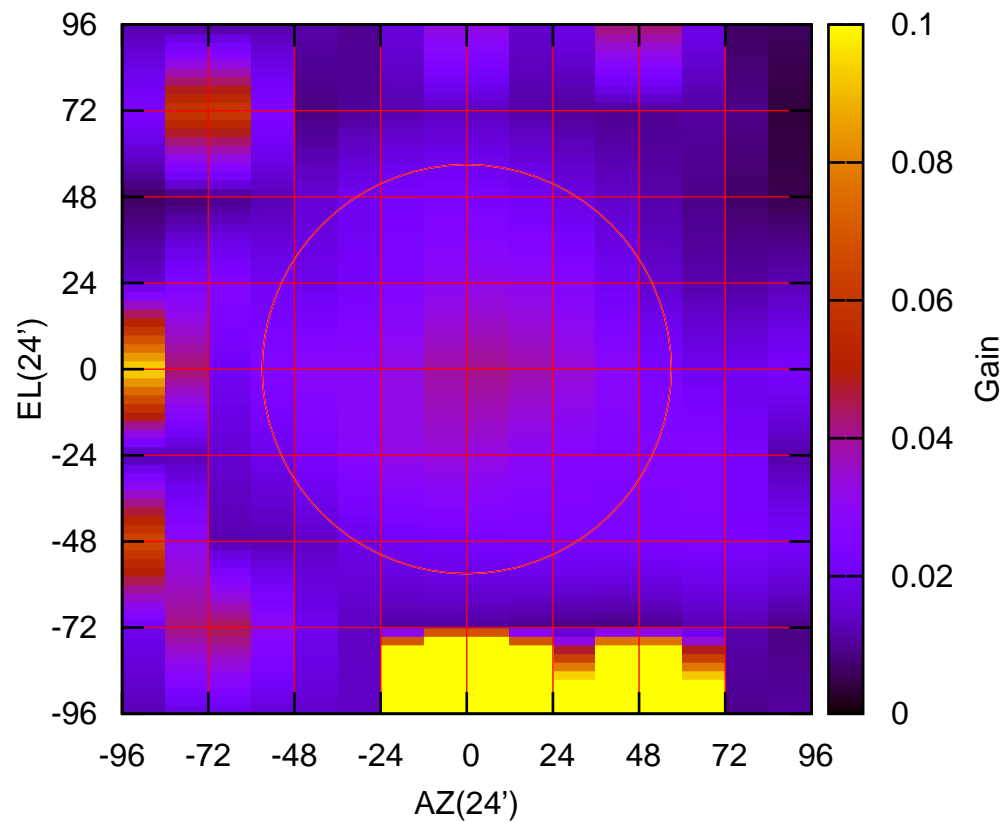
235 MHz.



C13-175 ELOFF=-115.6' ELBEAM= 25.0'

C14-130 AZOFF= 0.2' AZBEAM= 18.5'

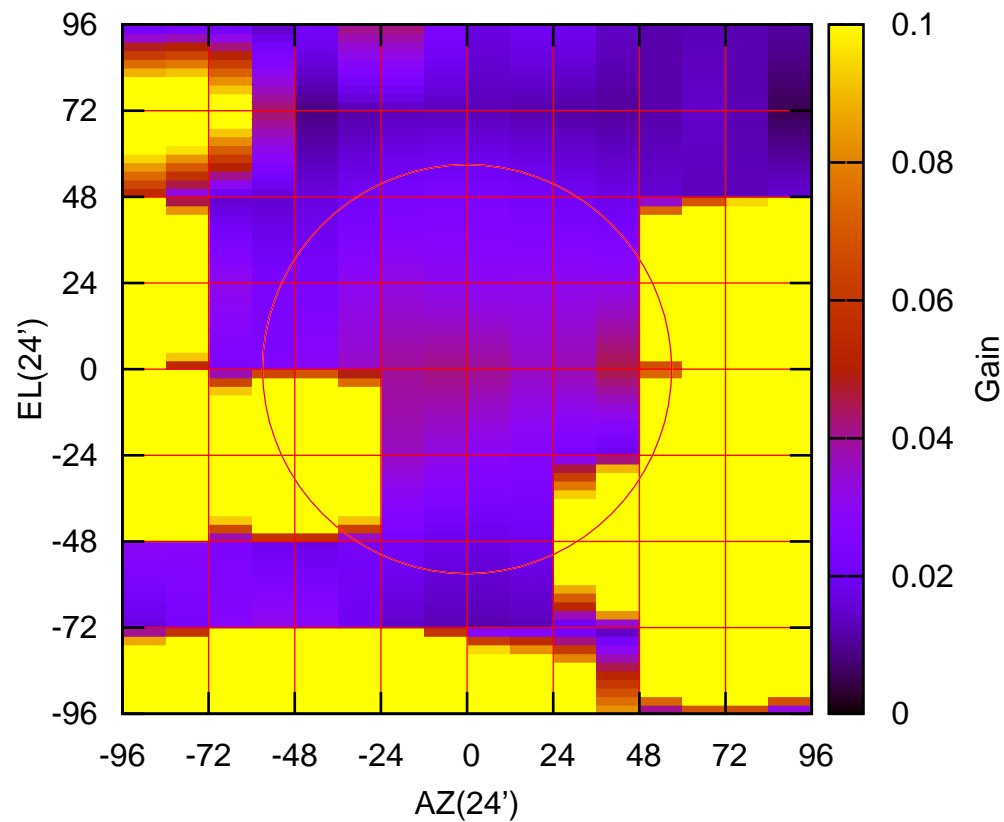
235 MHz.



C14-130 ELOFF=-143.9' ELBEAM= 40.1'

C14-175 AZOFF=-46.1' AZBEAM= 22.3'

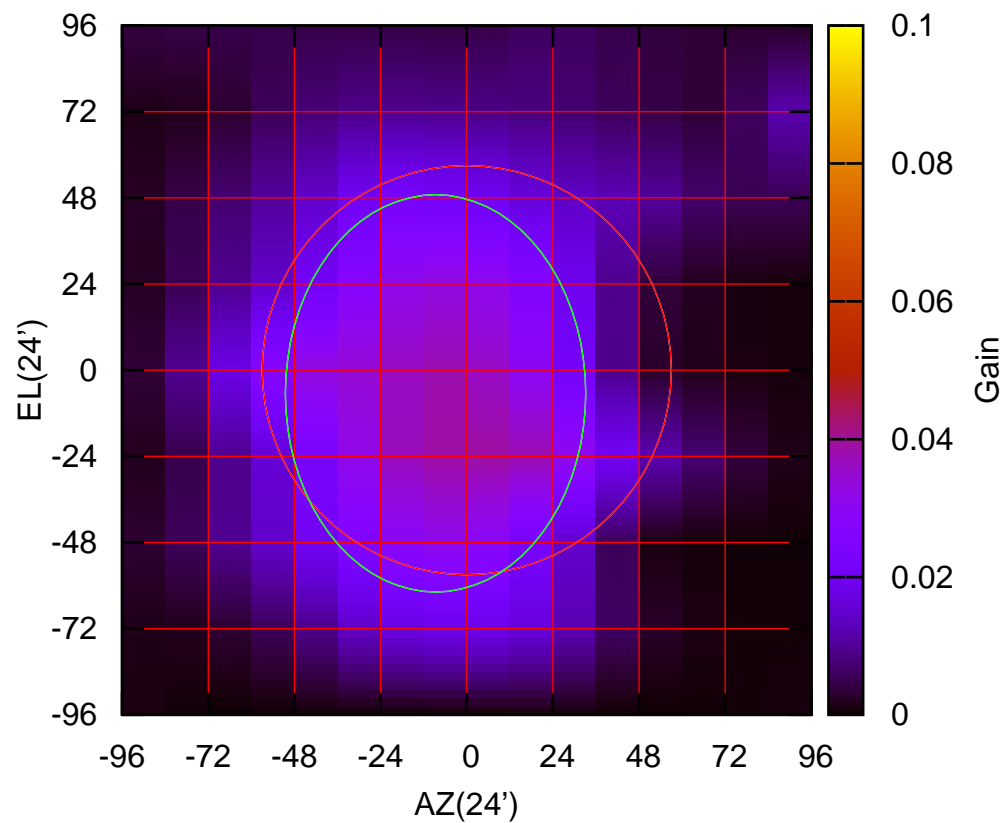
235 MHz.



C14-175 ELOFF=-108.9' ELBEAM= 16.1'

W01-130 AZOFF= -8.7' AZBEAM= 83.7'

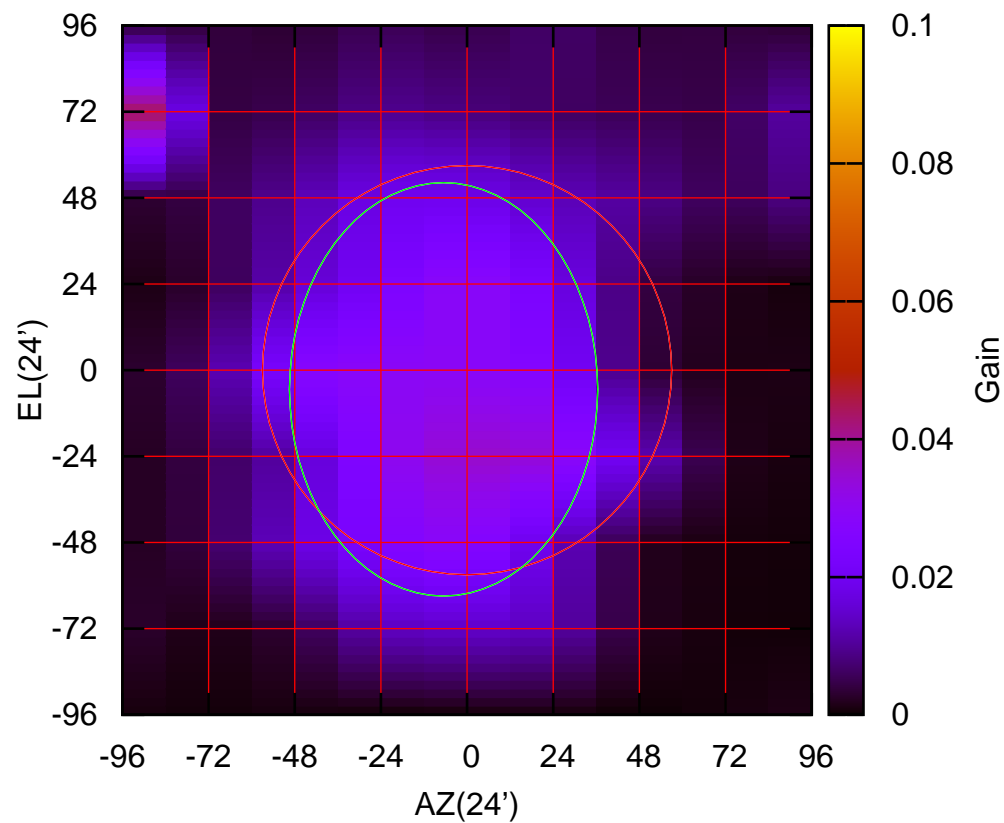
235 MHz.



W01-130 ELOFF= -6.5' ELBEAM=110.7'

W01-175 AZOFF= -6.6' AZBEAM= 85.9'

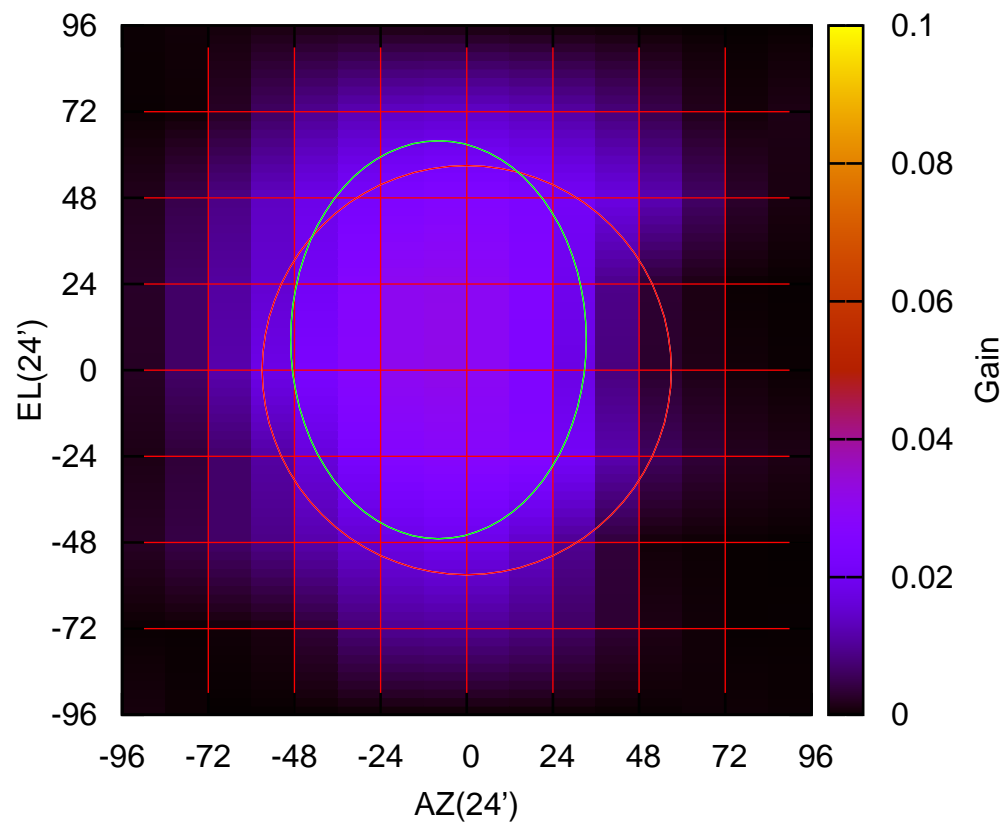
235 MHz.



W01-175 ELOFF= -5.4' ELBEAM=115.2'

W02-130 AZOFF= -7.9' AZBEAM= 82.4'

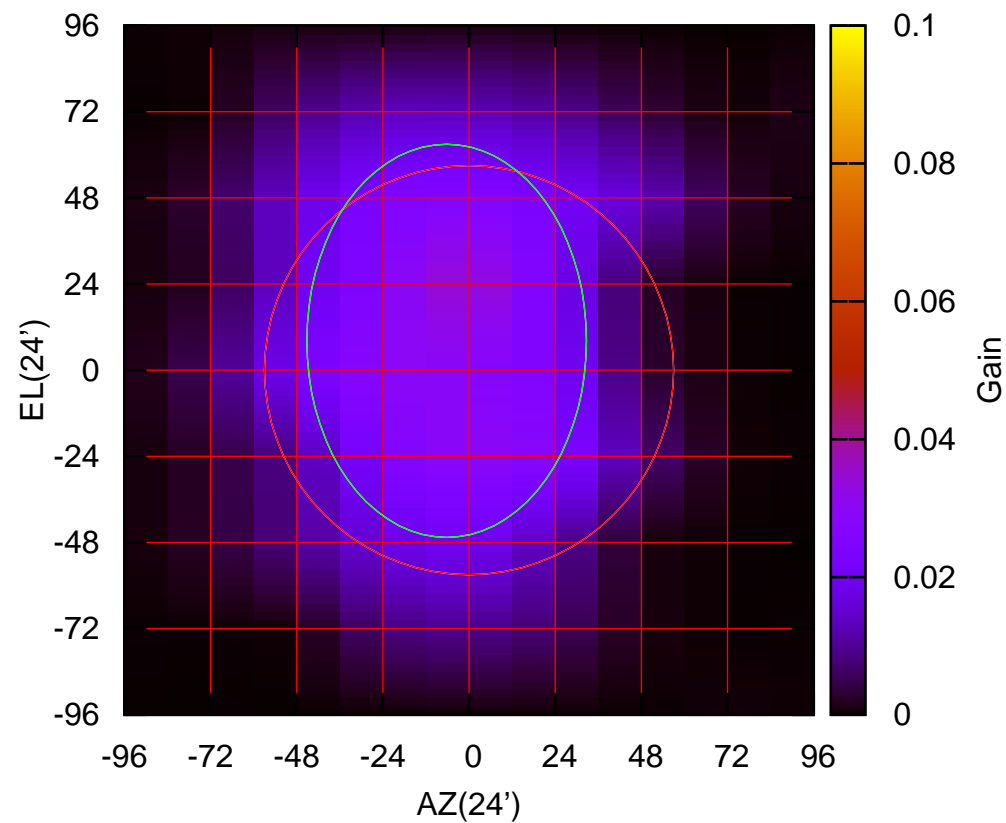
235 MHz.



W02-130 ELOFF= 8.5' ELBEAM=110.9'

W02-175 AZOFF= -6.3' AZBEAM= 78.0'

235 MHz.

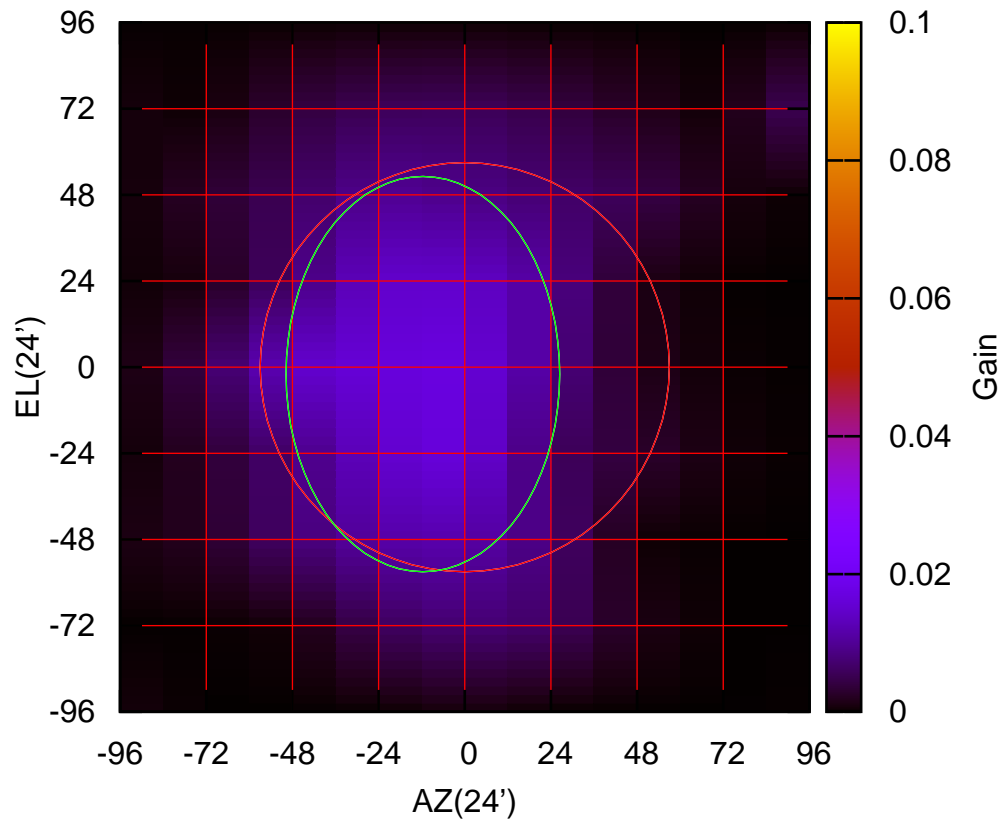


W02-175 ELOFF= 8.2' ELBEAM=109.6'



W03-130 AZOFF=-11.7' AZBEAM= 76.3'

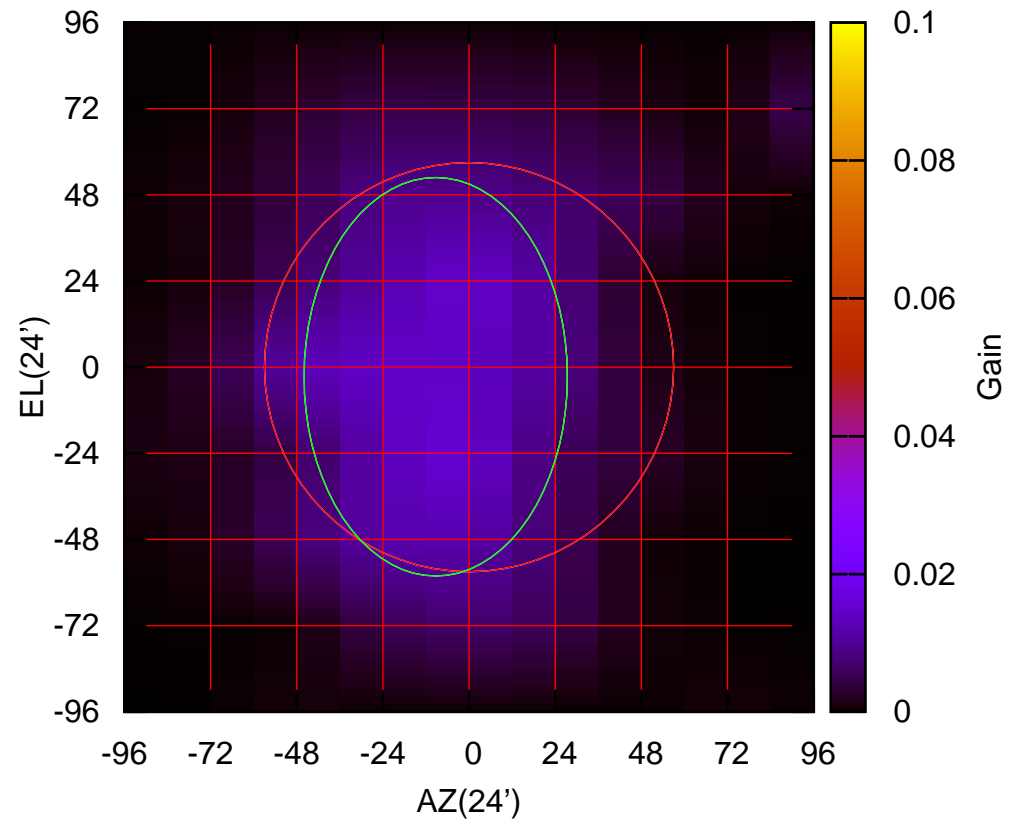
235 MHz.



W03-130 ELOFF= -2.0' ELBEAM=110.2'

W03-175 AZOFF= -9.3' AZBEAM= 73.4'

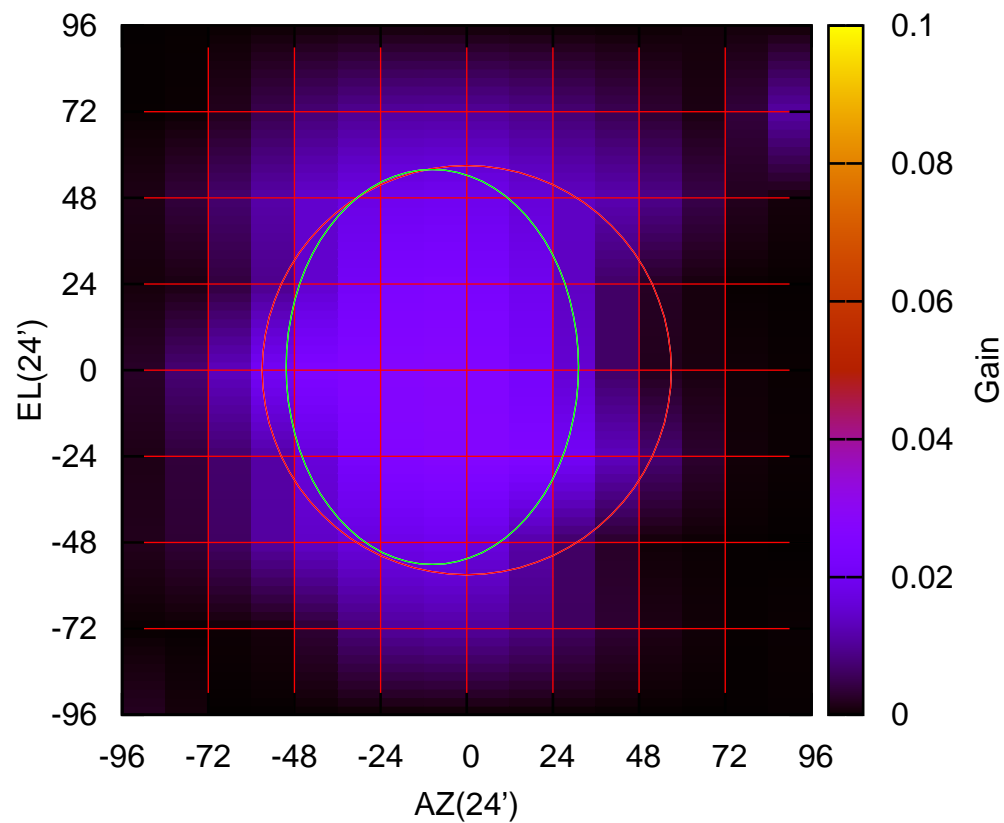
235 MHz.



W03-175 ELOFF= -2.7' ELBEAM=111.1'

W04-130 AZOFF= -9.6' AZBEAM= 81.5'

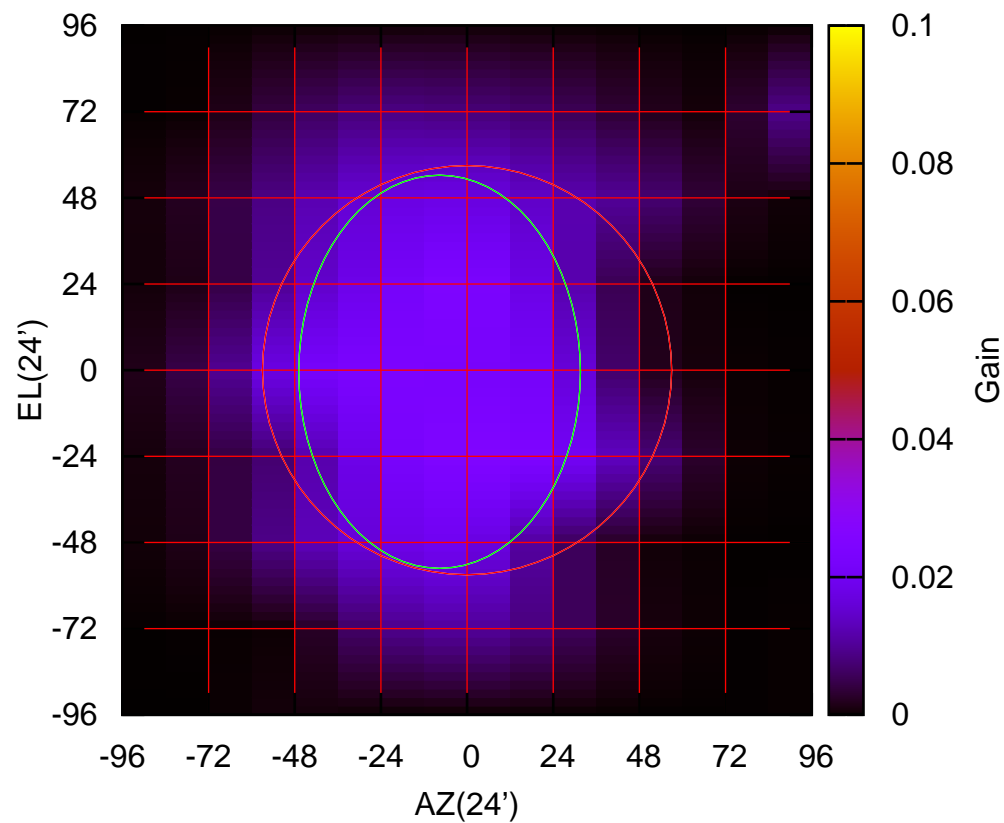
235 MHz.



W04-130 ELOFF= 0.9' ELBEAM=110.1'

W04-175 AZOFF= -7.7' AZBEAM= 78.5'

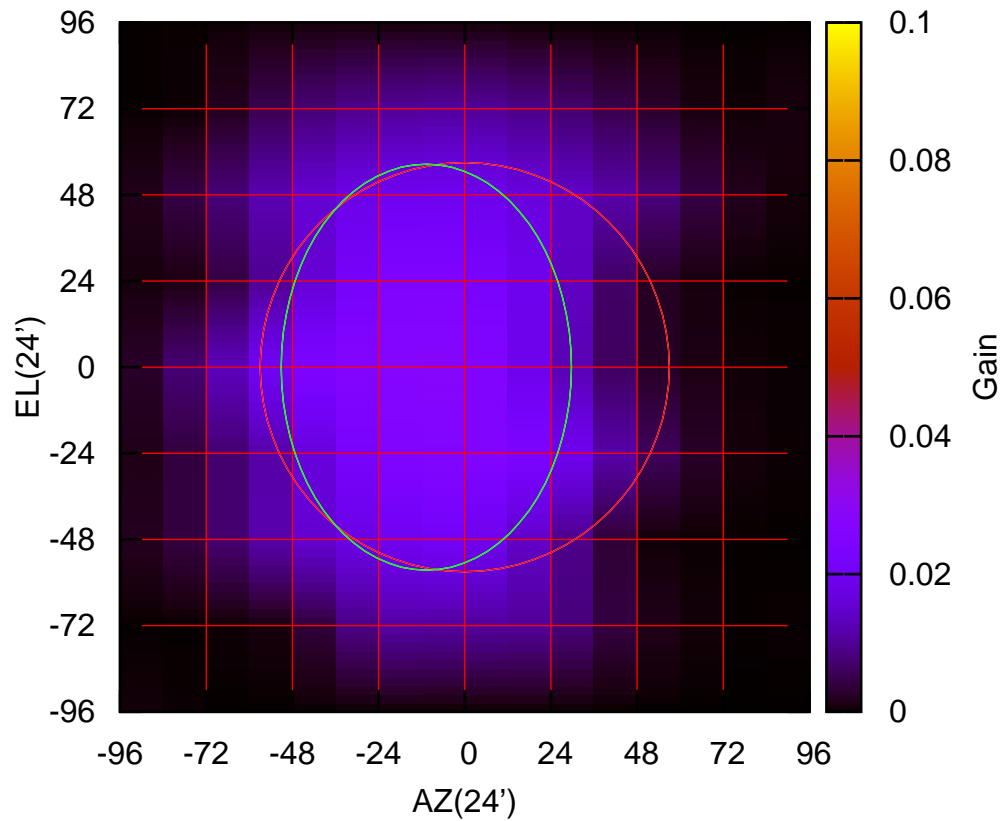
235 MHz.



W04-175 ELOFF= -0.5' ELBEAM=109.6'

W05-130 AZOFF=-10.7' AZBEAM= 80.9'

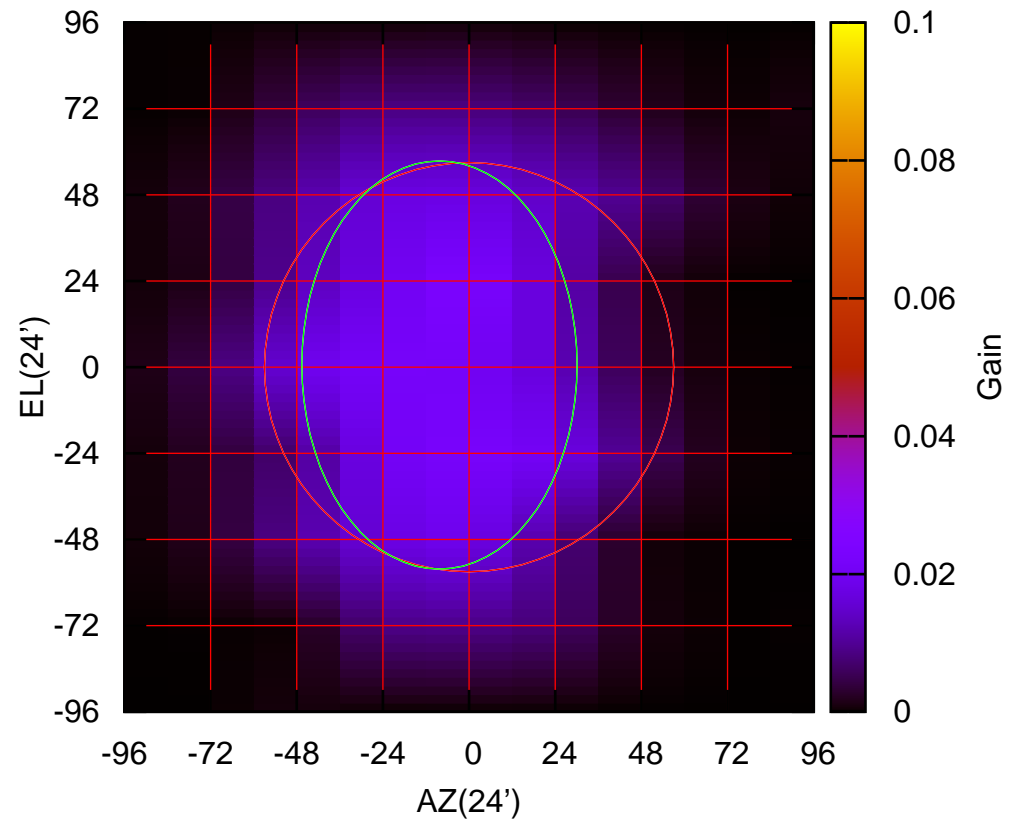
235 MHz.



W05-130 ELOFF= 0.0' ELBEAM=113.2'

W05-175 AZOFF= -8.3' AZBEAM= 76.7'

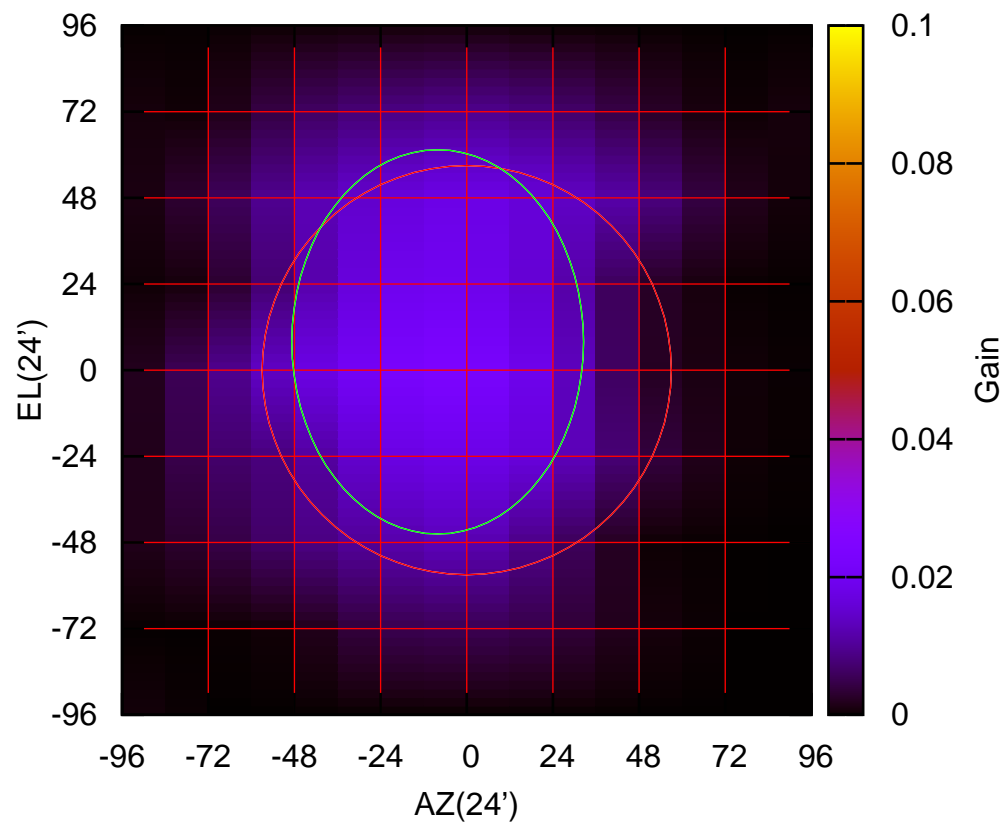
235 MHz.



W05-175 ELOFF= 0.6' ELBEAM=113.8'

W06-130 AZOFF= -8.1' AZBEAM= 81.3'

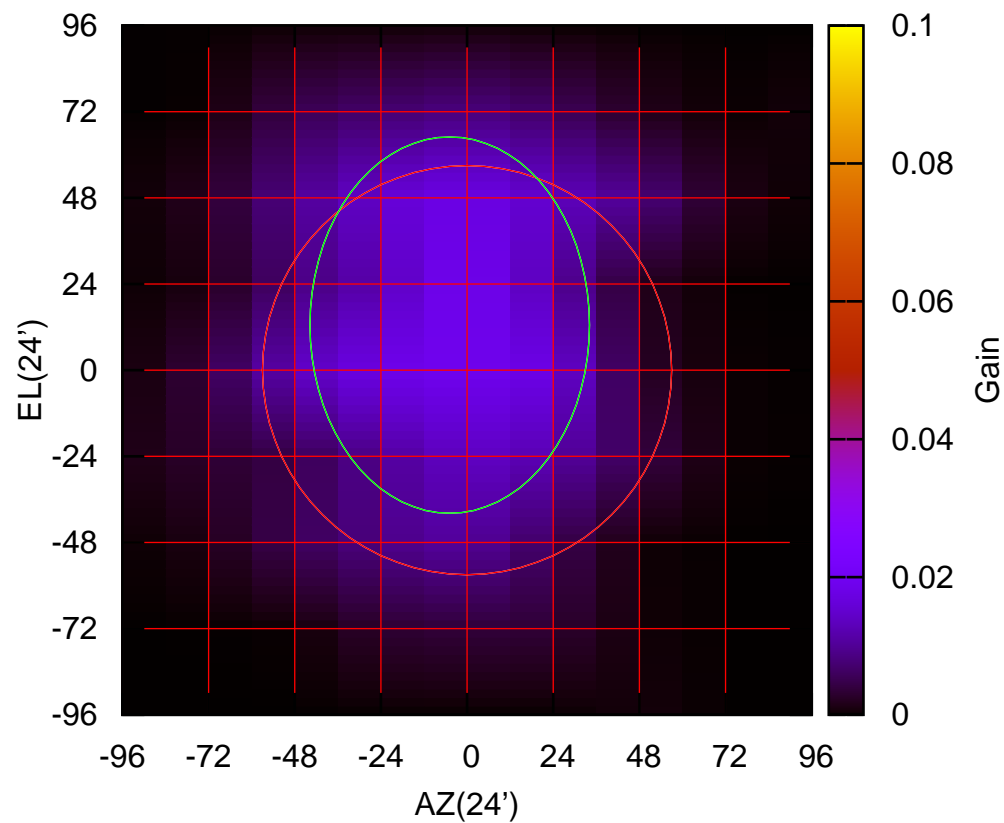
235 MHz.



W06-130 ELOFF= 7.9' ELBEAM=107.1'

W06-175 AZOFF= -4.9' AZBEAM= 77.9'

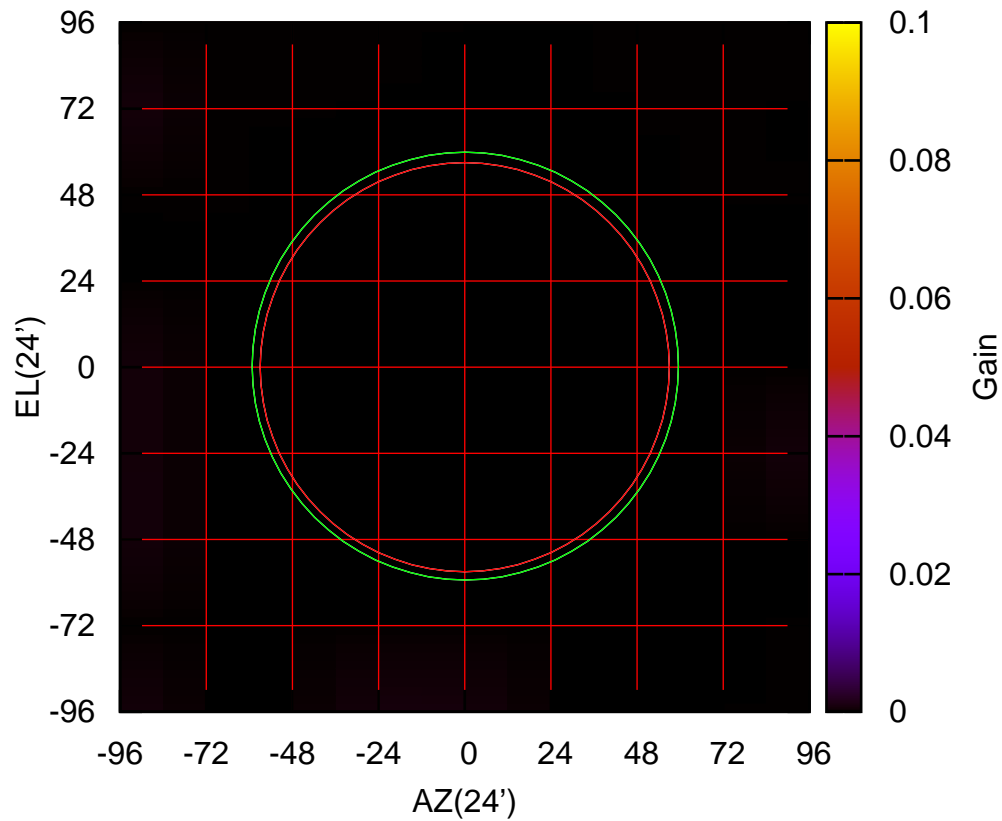
235 MHz.



W06-175 ELOFF= 12.6' ELBEAM=104.9'

E02-130 AZOFF= 0.2' AZBEAM=118.8'

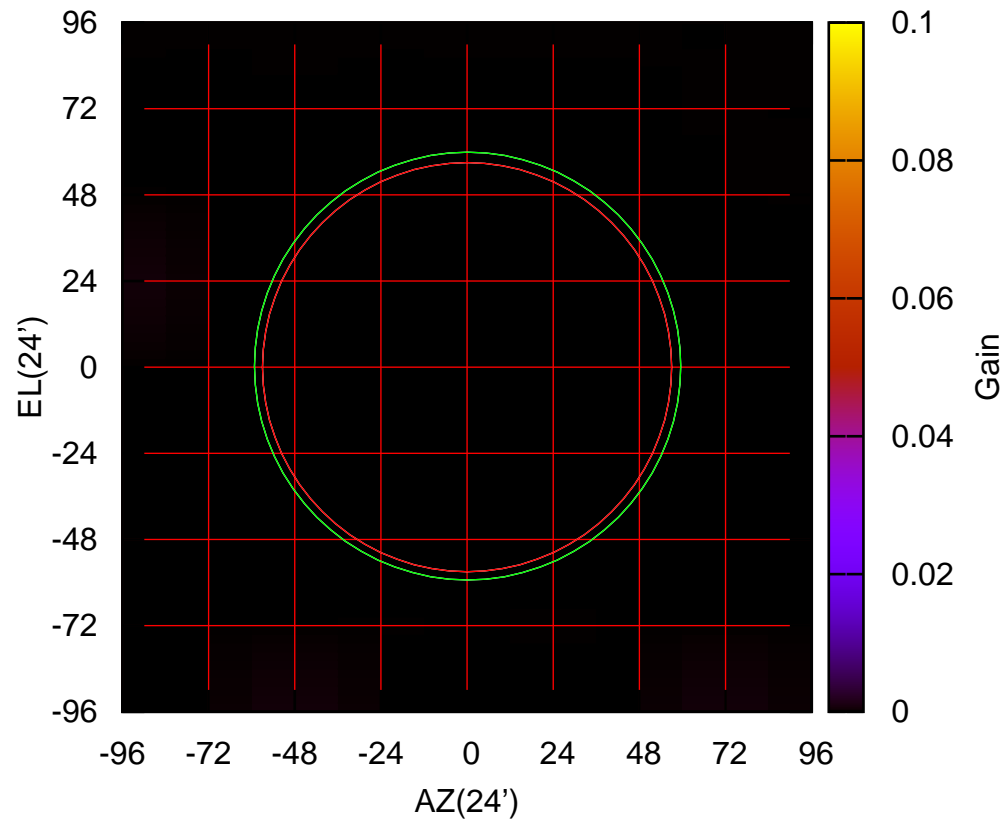
235 MHz.



E02-130 ELOFF= 0.3' ELBEAM=119.2'

E02-175 AZOFF= 0.2' AZBEAM=118.8'

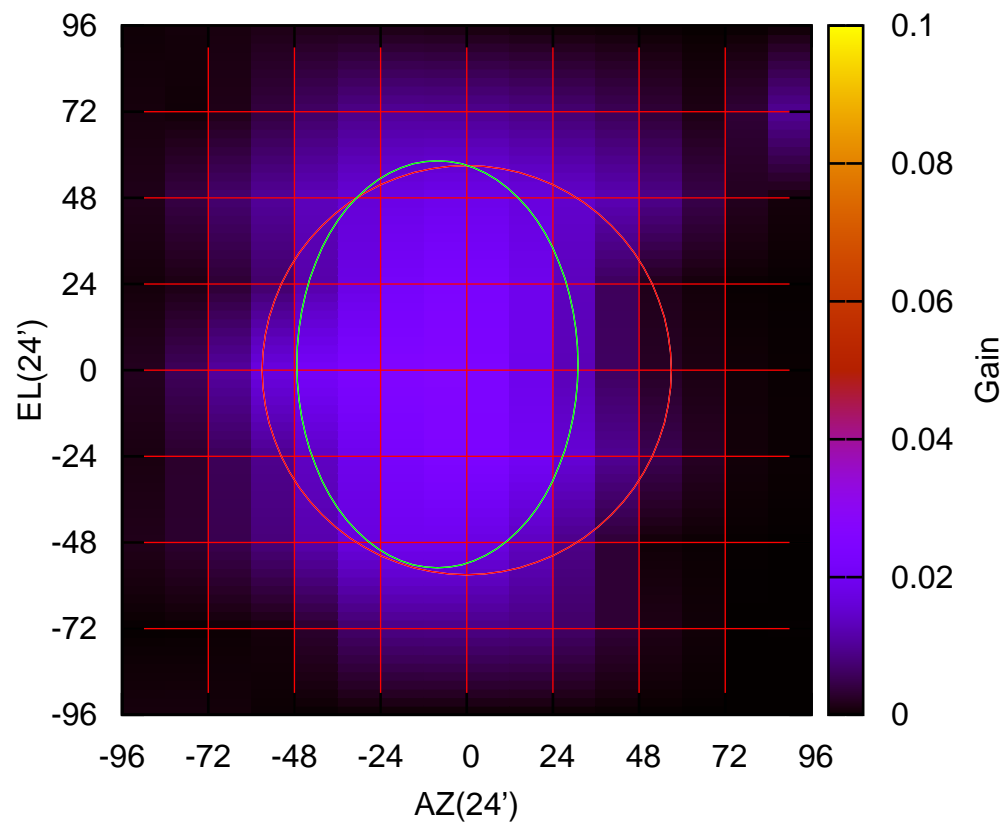
235 MHz.



E02-175 ELOFF= 0.3' ELBEAM=119.2'

E03-130 AZOFF= -8.2' AZBEAM= 78.4'

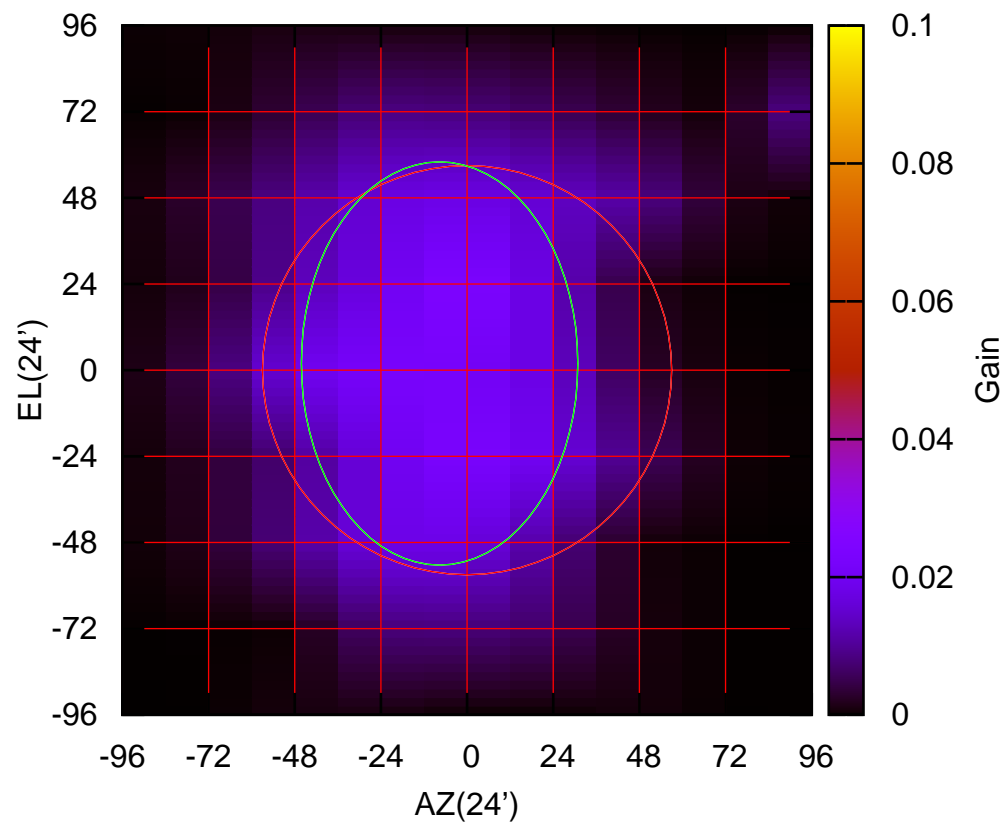
235 MHz.



E03-130 ELOFF= 1.7' ELBEAM=113.5'

E03-175 AZOFF= -7.7' AZBEAM= 77.1'

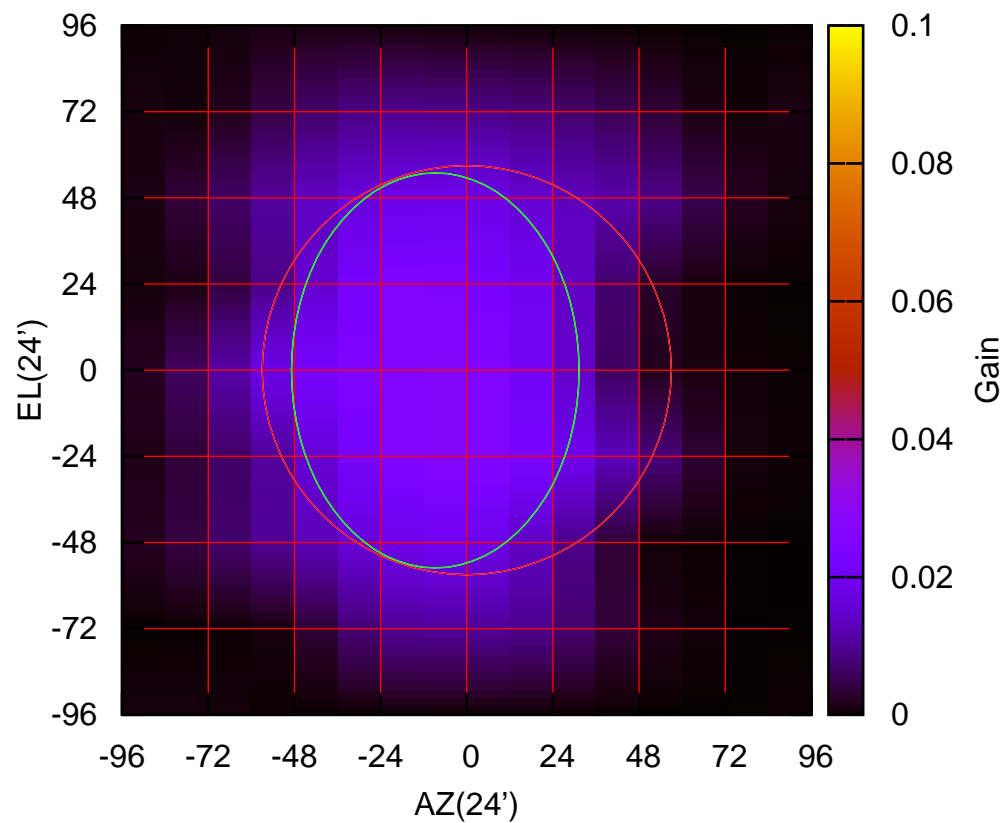
235 MHz.



E03-175 ELOFF= 1.9' ELBEAM=112.4'

E04-130 AZOFF= -8.8' AZBEAM= 80.2'

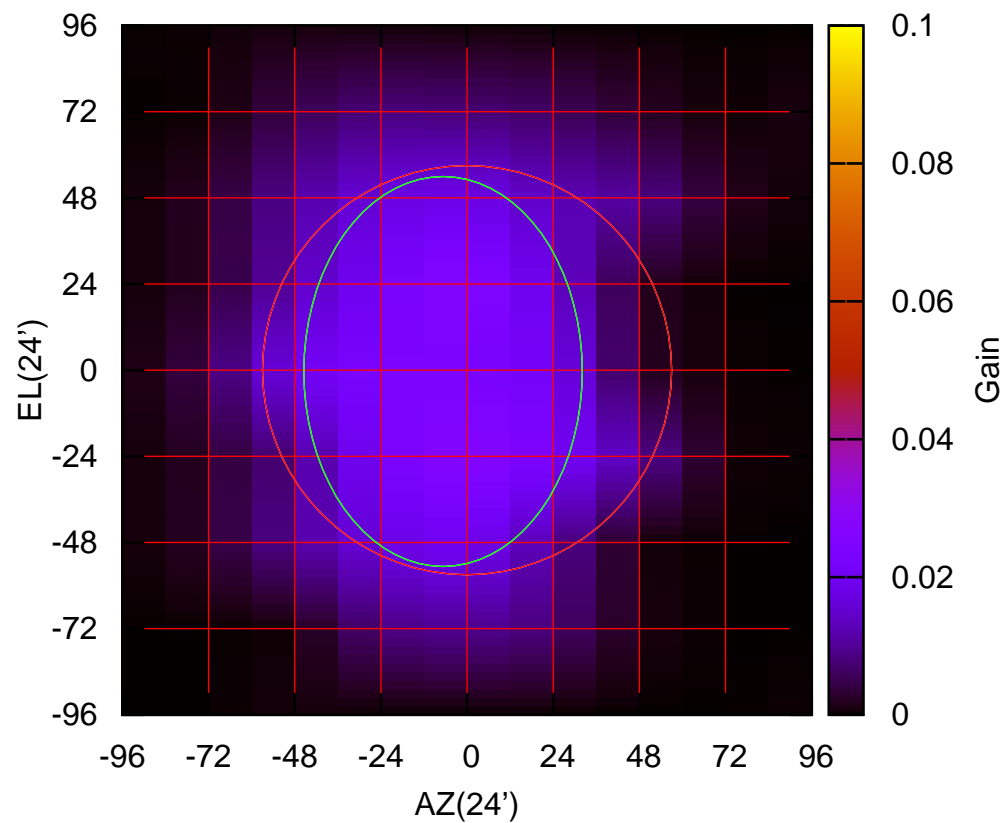
235 MHz.



E04-130 ELOFF= -0.1' ELBEAM=110.1'

E04-175 AZOFF= -6.7' AZBEAM= 77.6'

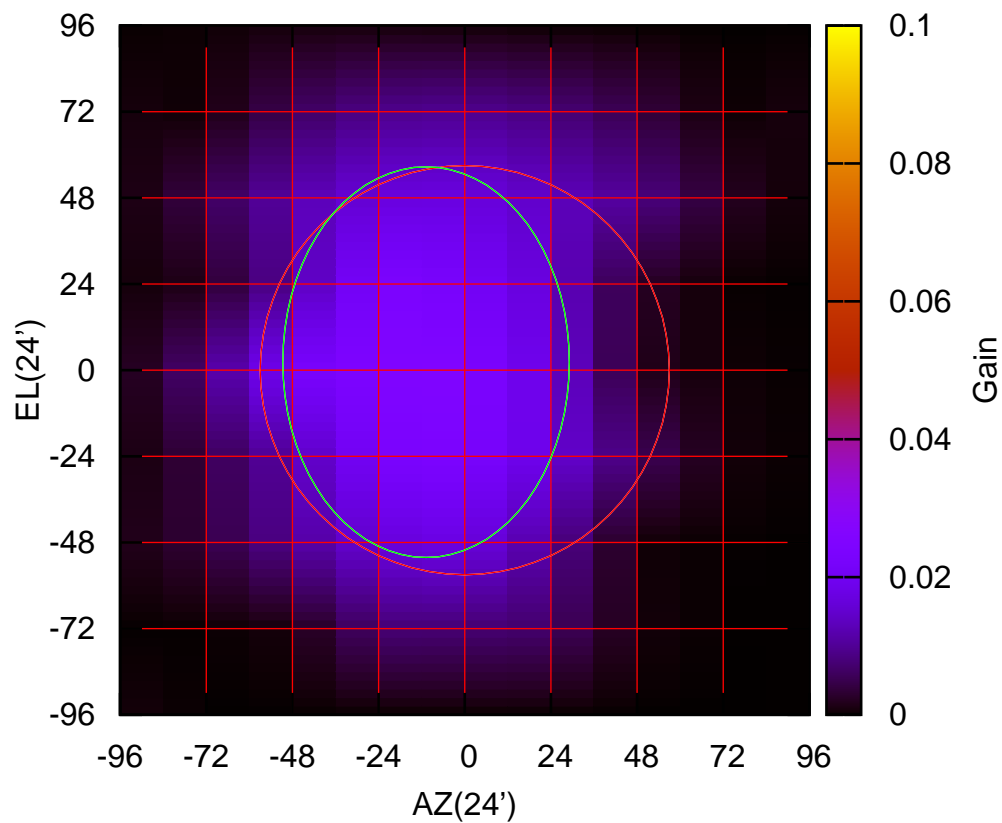
235 MHz.



E04-175 ELOFF= -0.4' ELBEAM=108.7'

E05-130 AZOFF=-10.8' AZBEAM= 79.9'

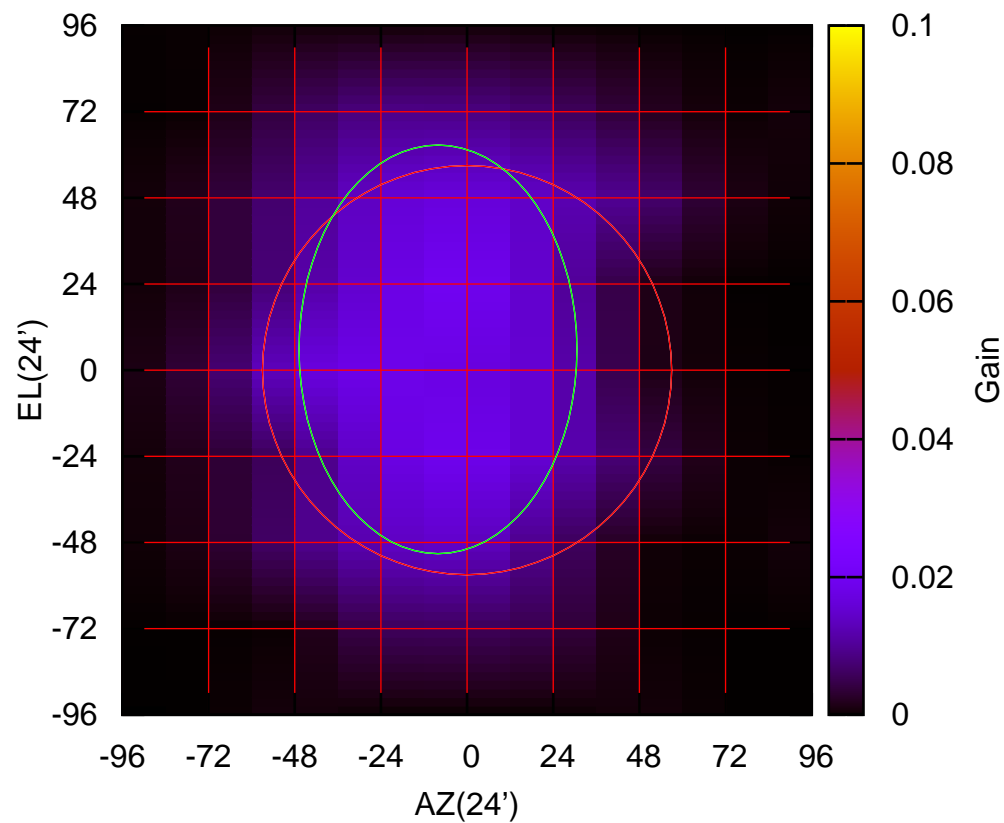
235 MHz.



E05-130 ELOFF= 2.3' ELBEAM=108.9'

E05-175 AZOFF= -8.1' AZBEAM= 77.5'

235 MHz.

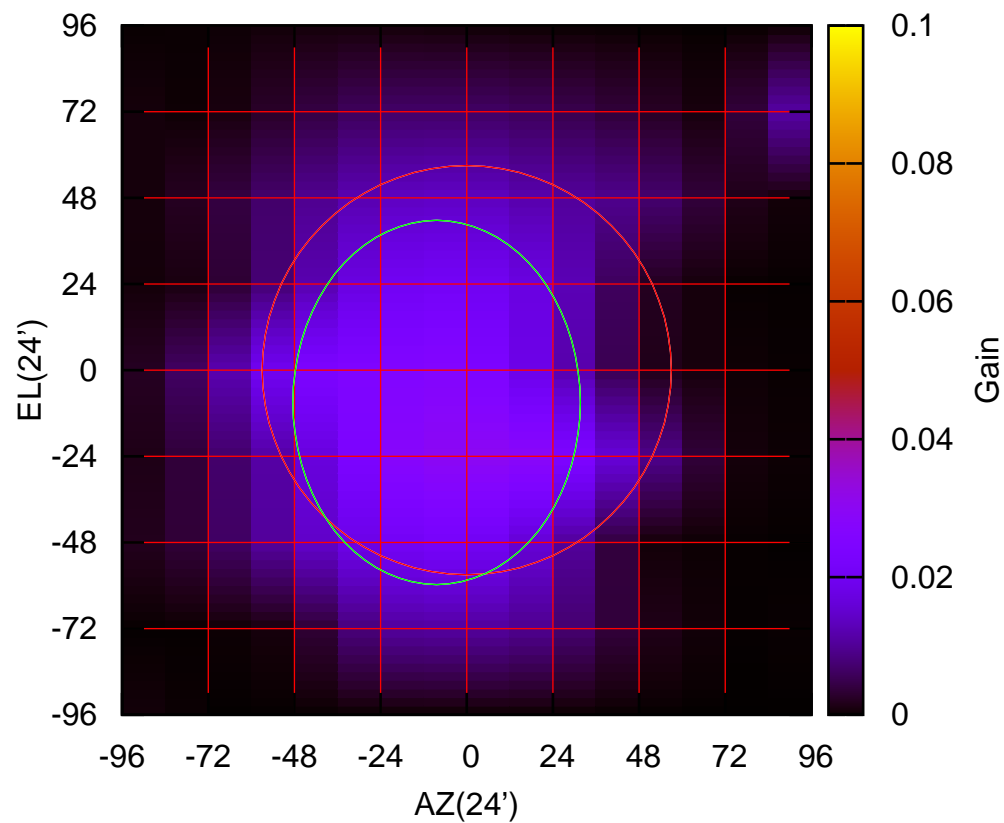


E05-175 ELOFF= 5.8' ELBEAM=113.9'



E06-130 AZOFF= -8.4' AZBEAM= 80.1'

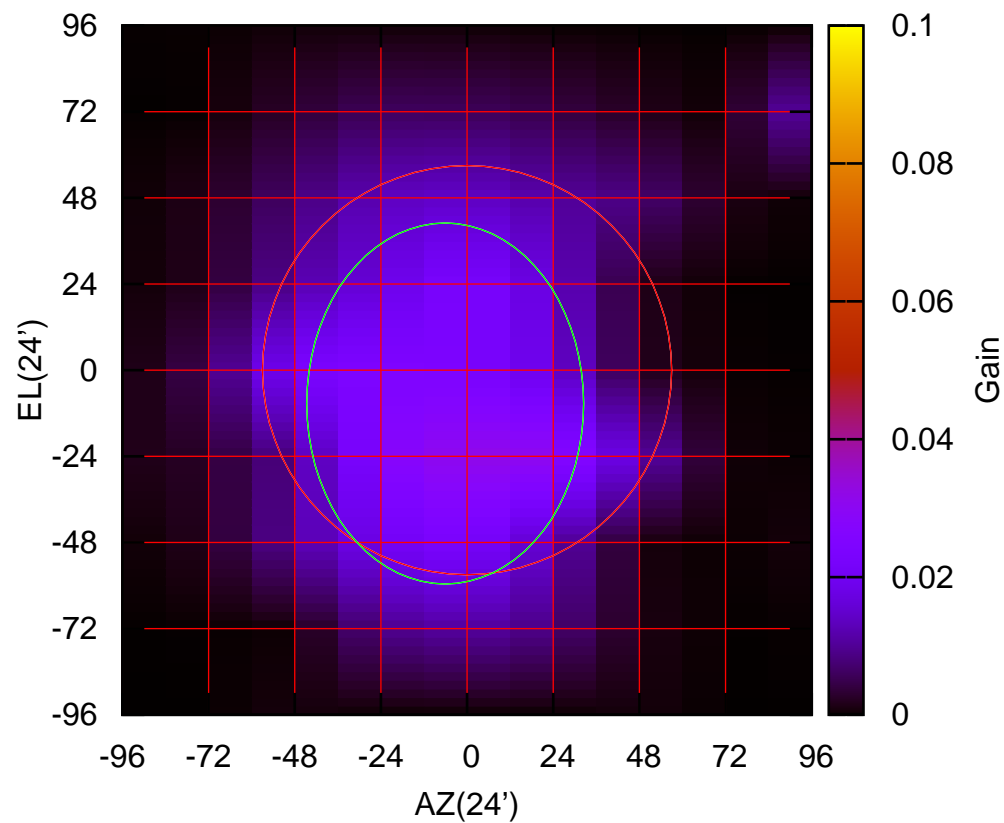
235 MHz.



E06-130 ELOFF= -9.0' ELBEAM=101.5'

E06-175 AZOFF= -6.1' AZBEAM= 77.2'

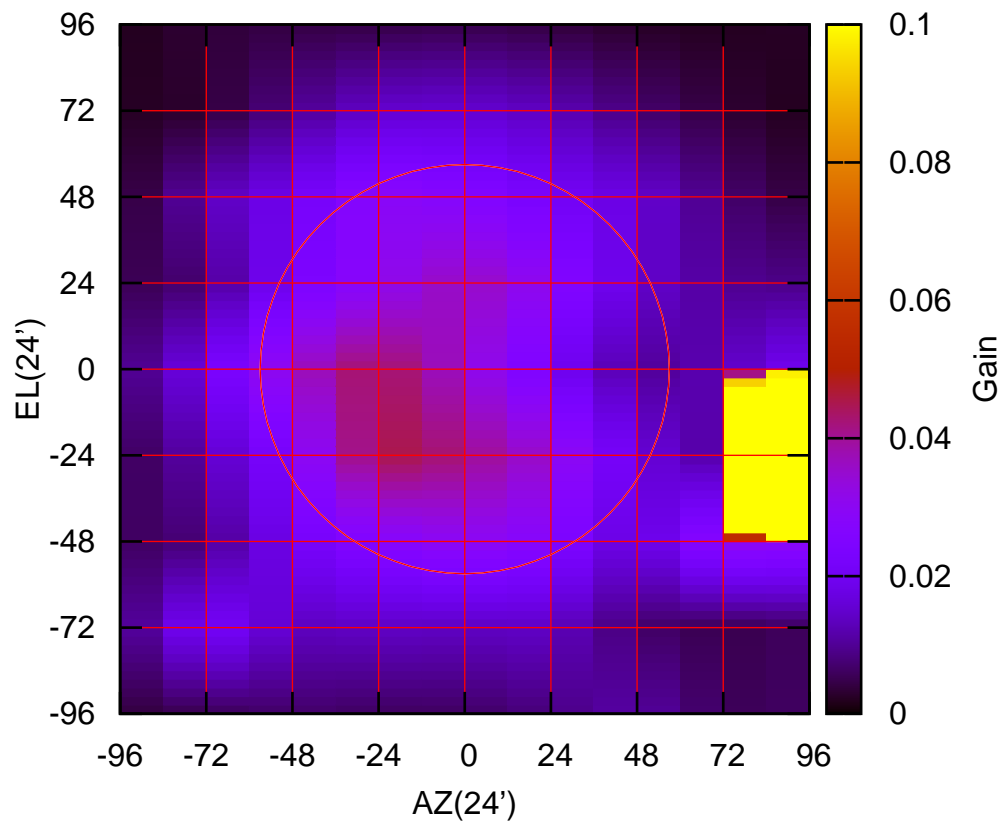
235 MHz.



E06-175 ELOFF= -9.3' ELBEAM=100.6'

S01-130 AZOFF=132.5' AZBEAM= 34.8'

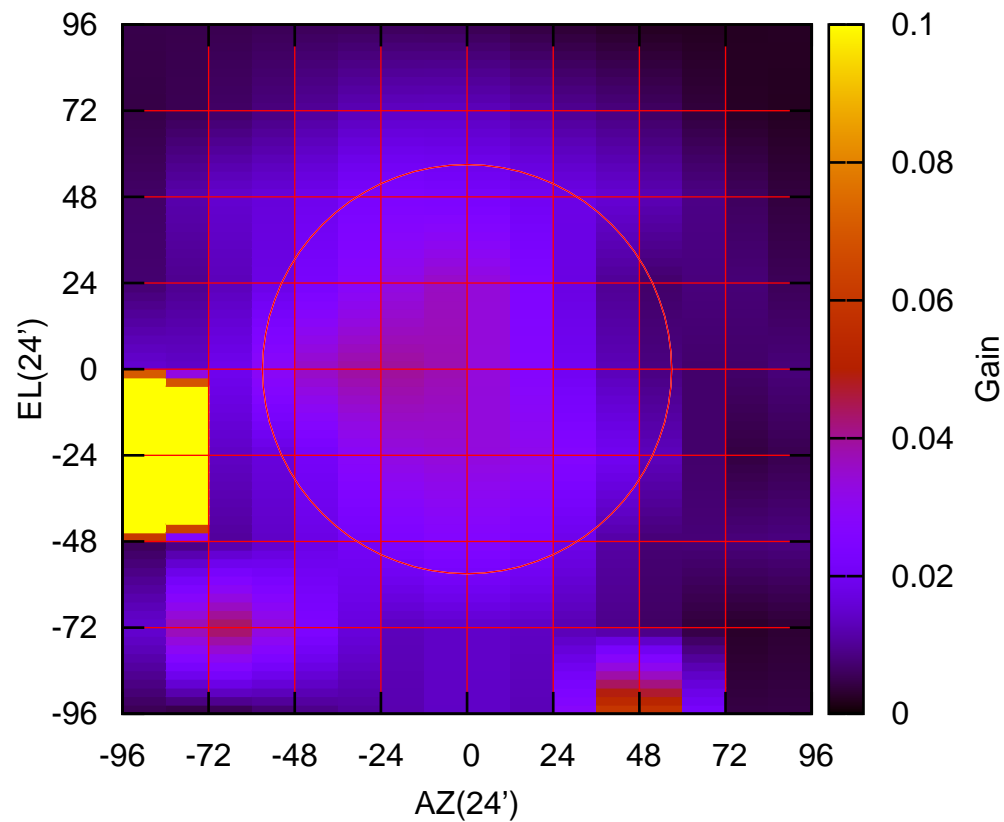
235 MHz.



S01-130 ELOFF=-24.4' ELBEAM=-18.9'

S01-175 AZOFF=-172.6' AZBEAM= 49.8'

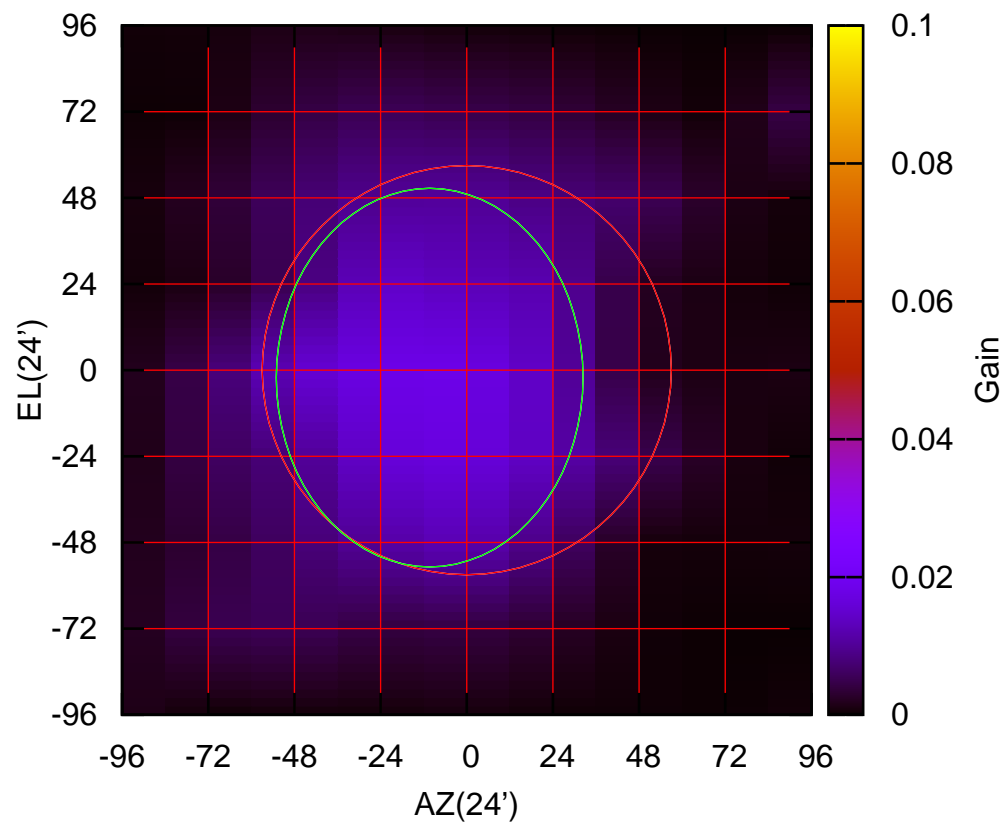
235 MHz.



S01-175 ELOFF=-22.5' ELBEAM=-17.6'

S02-130 AZOFF=-10.4' AZBEAM= 85.5'

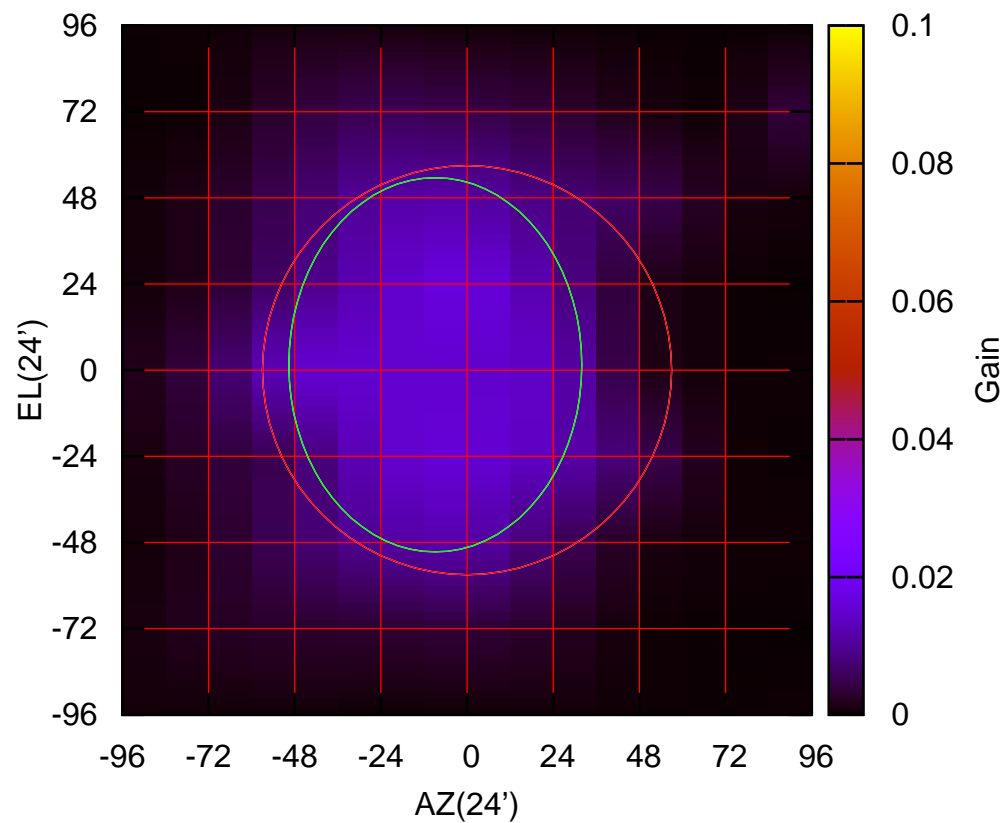
235 MHz.



S02-130 ELOFF= -2.1' ELBEAM=105.5'

S02-175 AZOFF= -8.9' AZBEAM= 81.7'

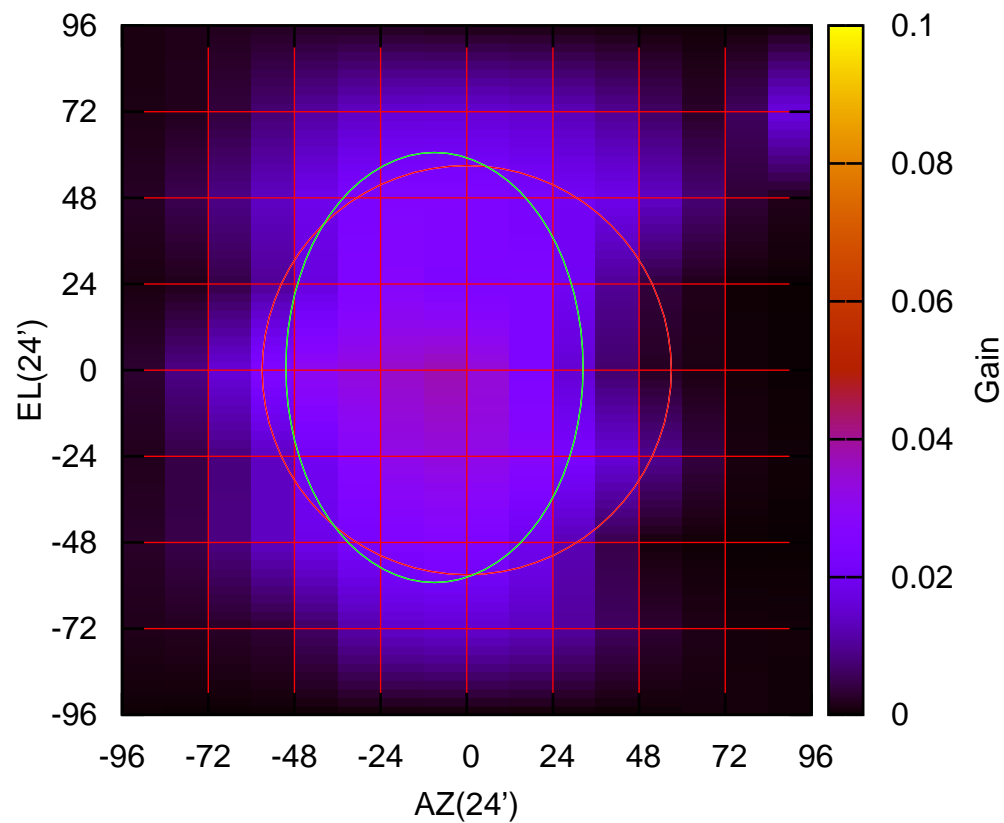
235 MHz.



S02-175 ELOFF= 1.5' ELBEAM=104.3'

S03-130 AZOFF= -9.0' AZBEAM= 82.9'

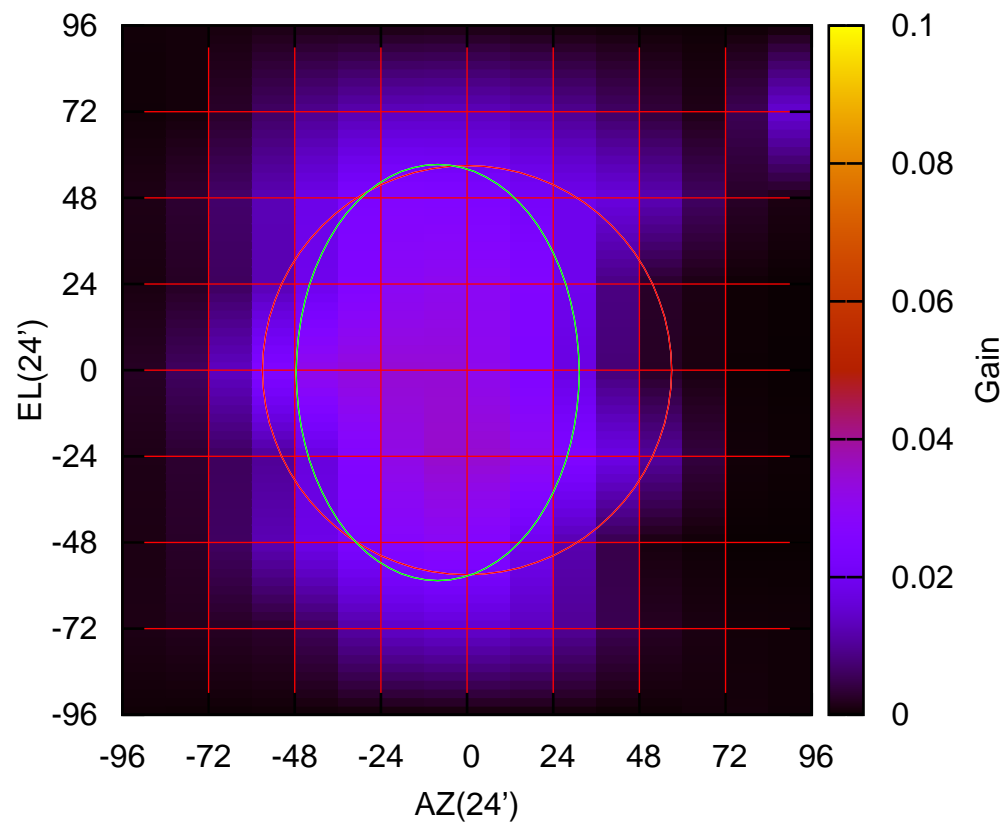
235 MHz.



S03-130 ELOFF= 0.8' ELBEAM=119.8'

S03-175 AZOFF= -8.2' AZBEAM= 78.9'

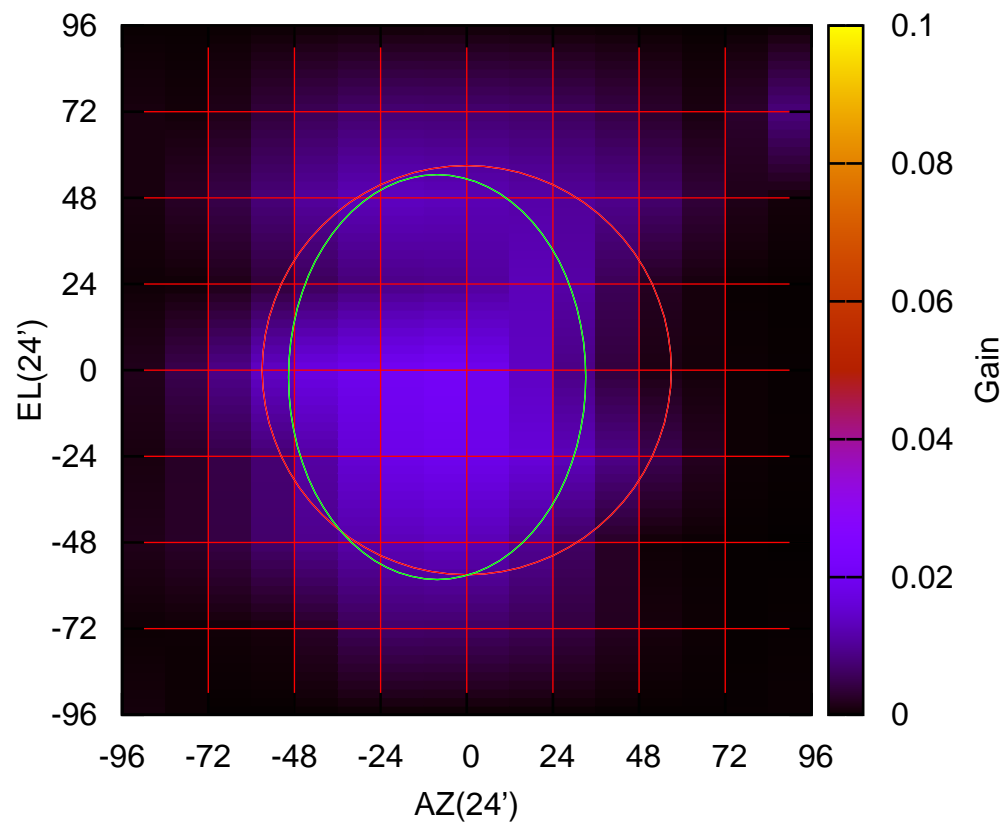
235 MHz.



S03-175 ELOFF= -0.7' ELBEAM=116.0'

S04-130 AZOFF= -8.3' AZBEAM= 82.9'

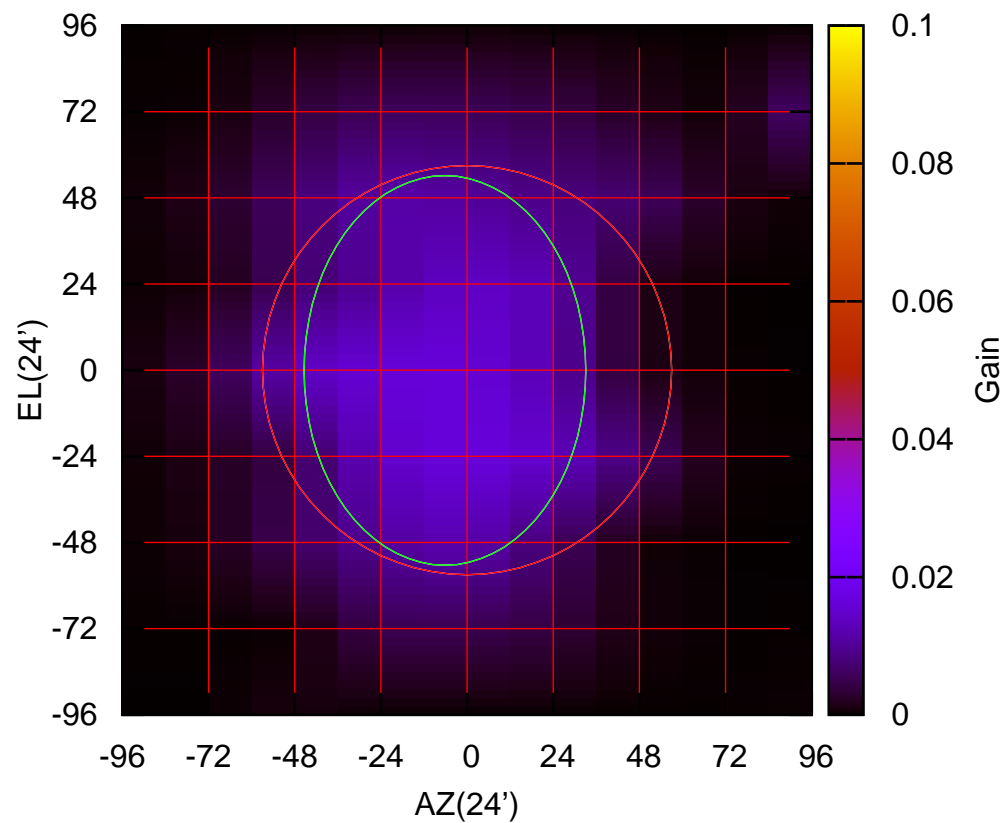
235 MHz.



S04-130 ELOFF= -2.0' ELBEAM=112.8'

S04-175 AZOFF= -6.2' AZBEAM= 78.6'

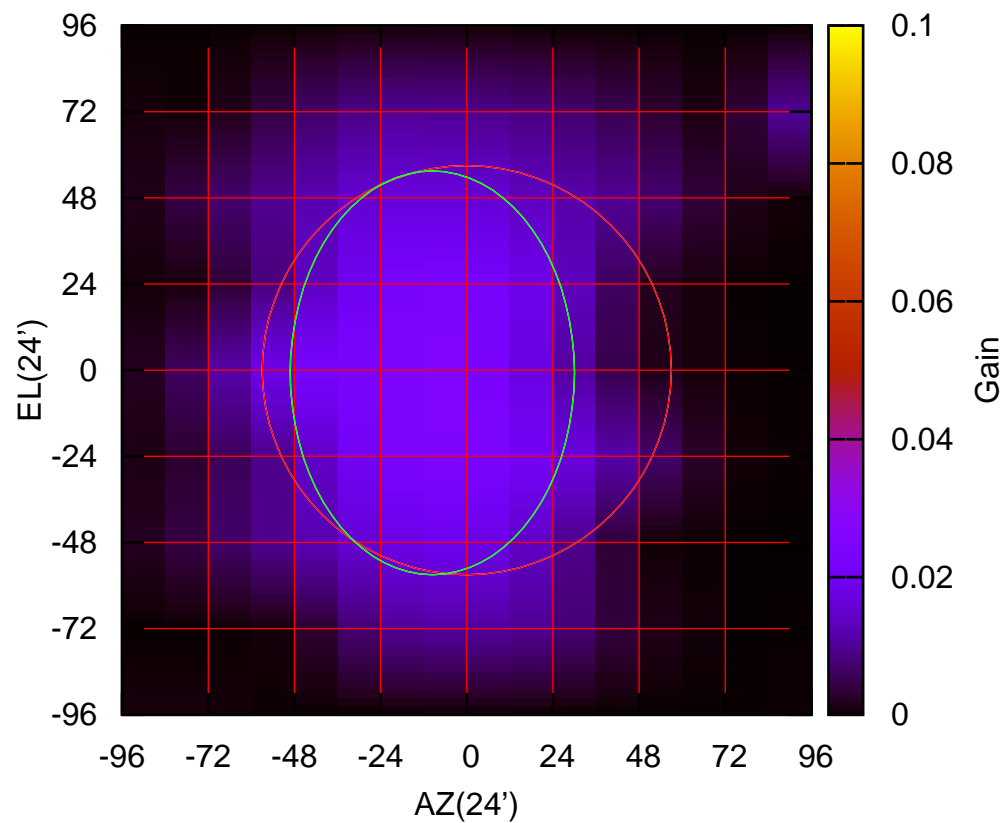
235 MHz.



S04-175 ELOFF= -0.1' ELBEAM=108.6'

S06-130 AZOFF= -9.6' AZBEAM= 79.2'

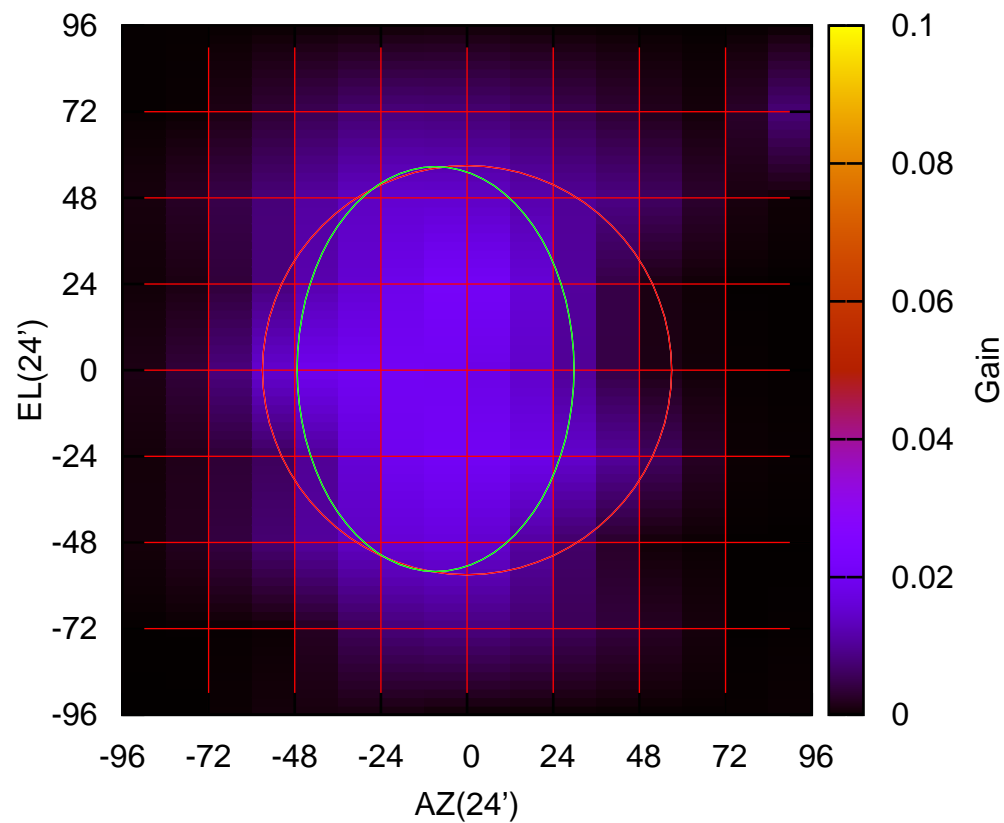
235 MHz.



S06-130 ELOFF= -0.8' ELBEAM=112.5'

S06-175 AZOFF= -8.8' AZBEAM= 77.2'

235 MHz.



S06-175 ELOFF= 0.3' ELBEAM=112.8'