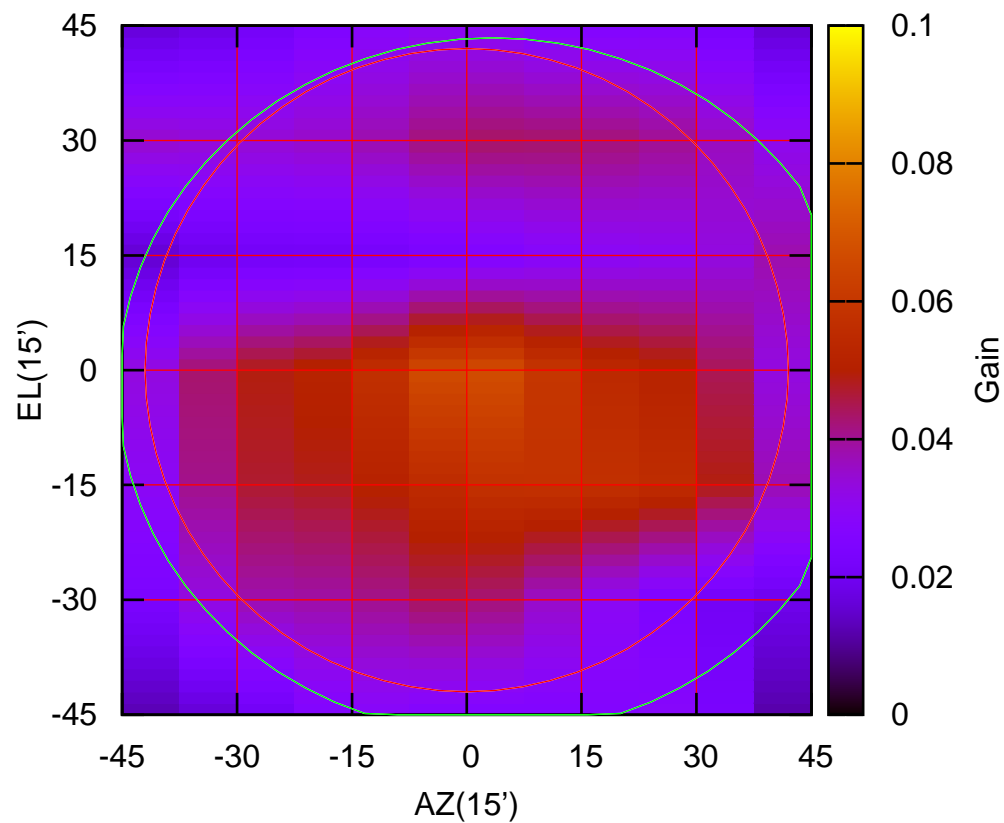


C00-130 AZOFF= 3.4' AZBEAM= 97.9'

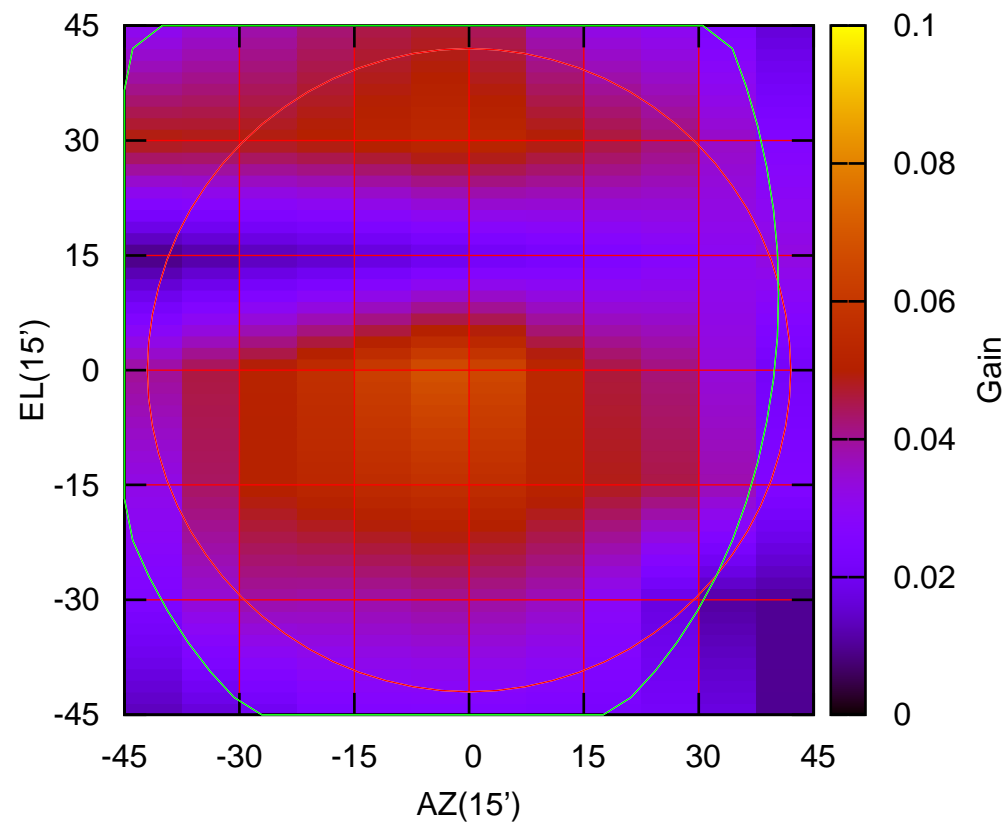
325 MHz.



C00-130 ELOFF= -2.1' ELBEAM= 91.0'

C00-175 AZOFF= -4.8' AZBEAM= 90.4'

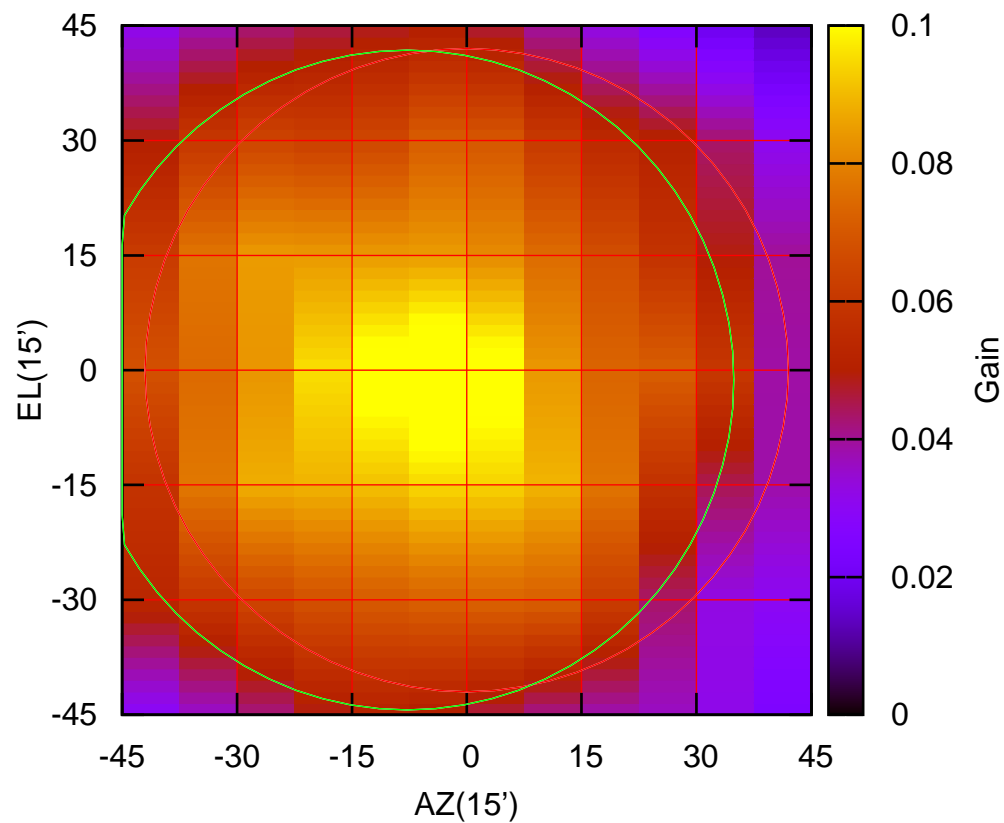
325 MHz.



C00-175 ELOFF= 9.9' ELBEAM=128.5'

C01-130 AZOFF= -7.8' AZBEAM= 85.3'

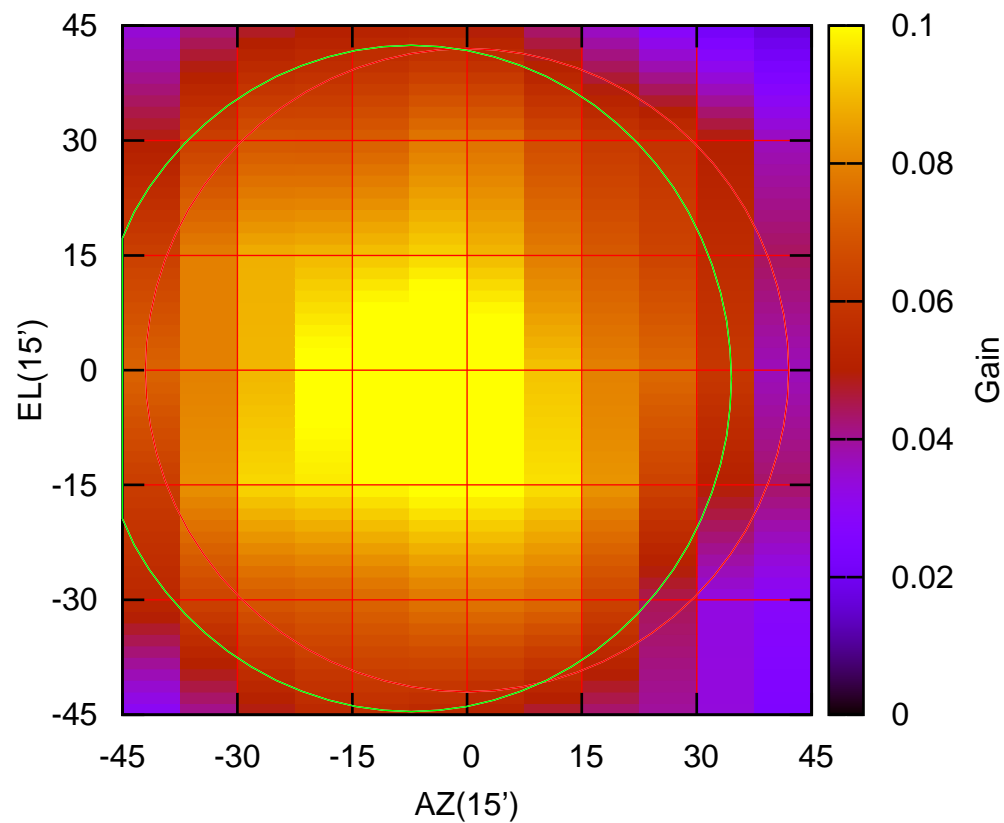
325 MHz.



C01-130 ELOFF= -1.3' ELBEAM= 86.2'

C01-175 AZOFF= -7.3' AZBEAM= 83.6'

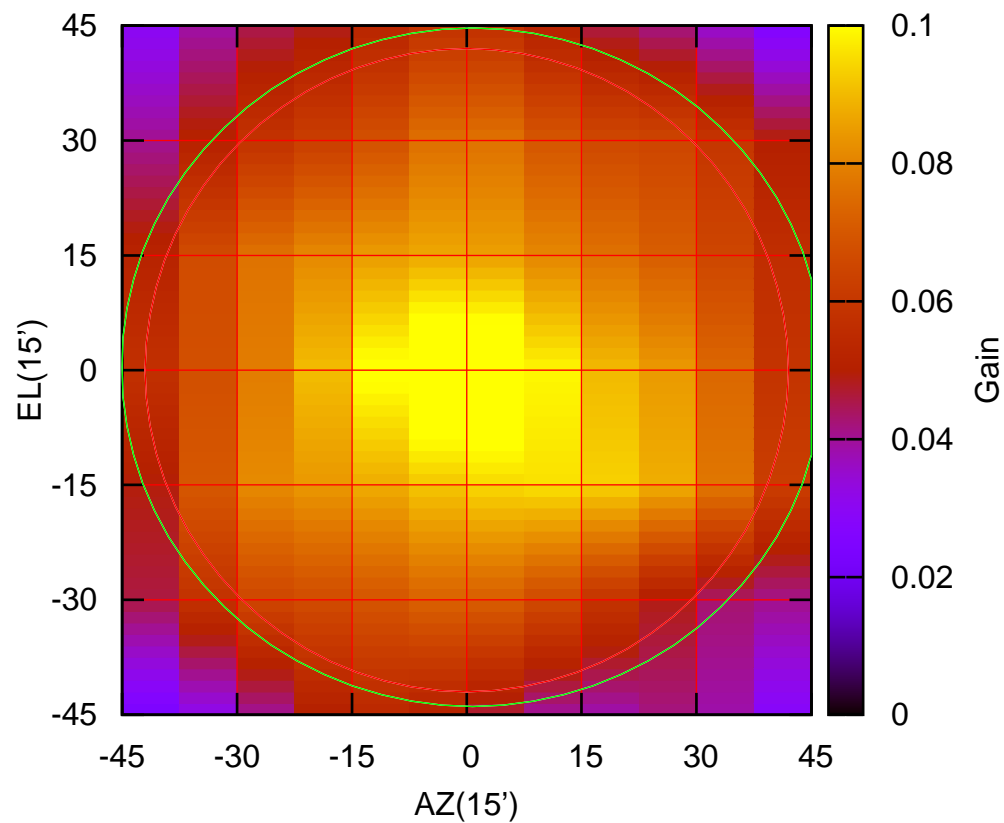
325 MHz.



C01-175 ELOFF= -1.1' ELBEAM= 87.0'

C02-130 AZOFF= 0.8' AZBEAM= 91.7'

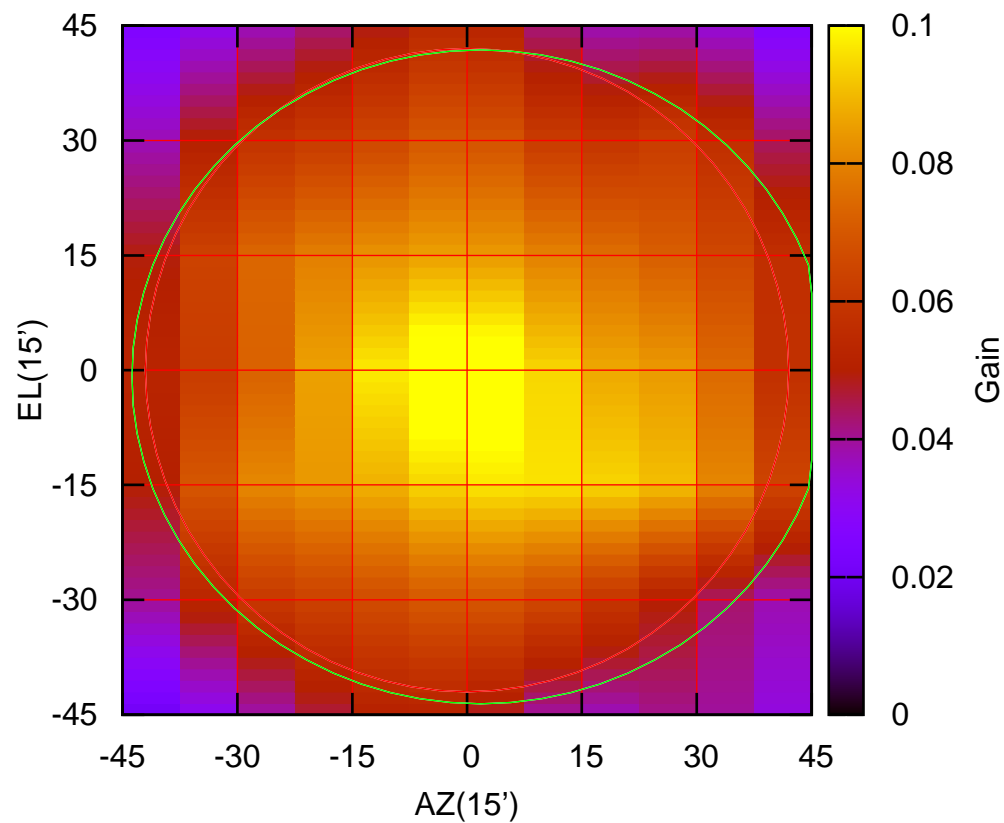
325 MHz.



C02-130 ELOFF= 0.4' ELBEAM= 88.6'

C02-175 AZOFF= 1.8' AZBEAM= 91.1'

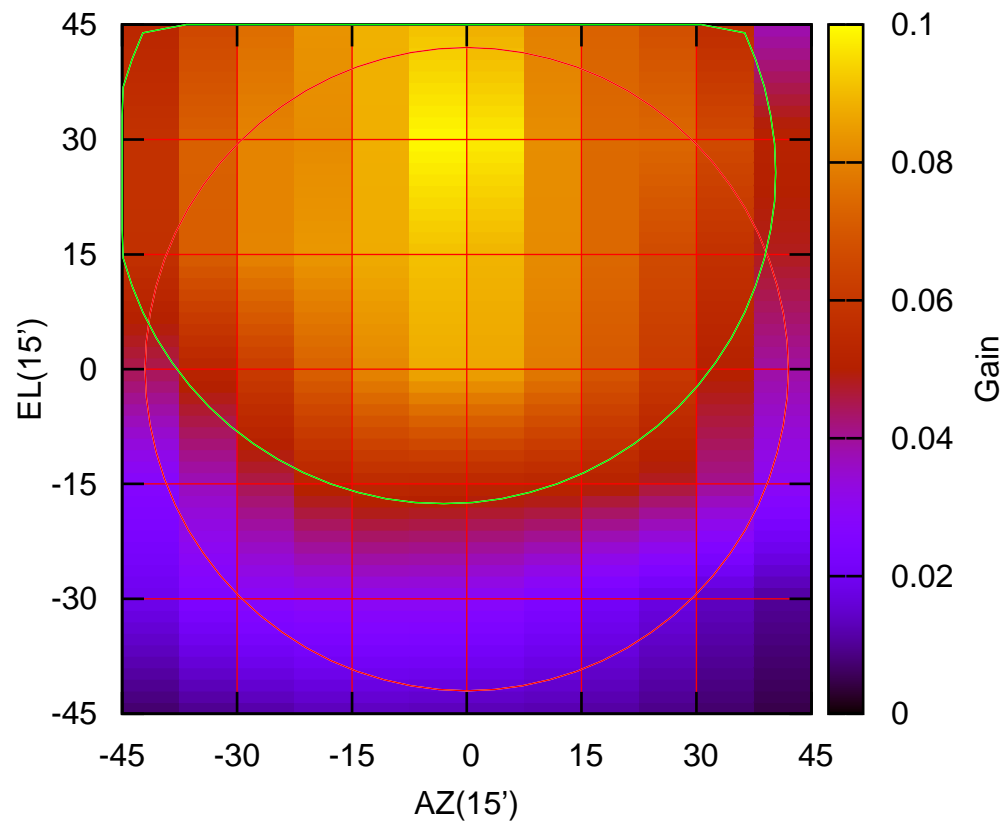
325 MHz.



C02-175 ELOFF= -0.9' ELBEAM= 85.4'

C03-130 AZOFF= -3.0' AZBEAM= 86.7'

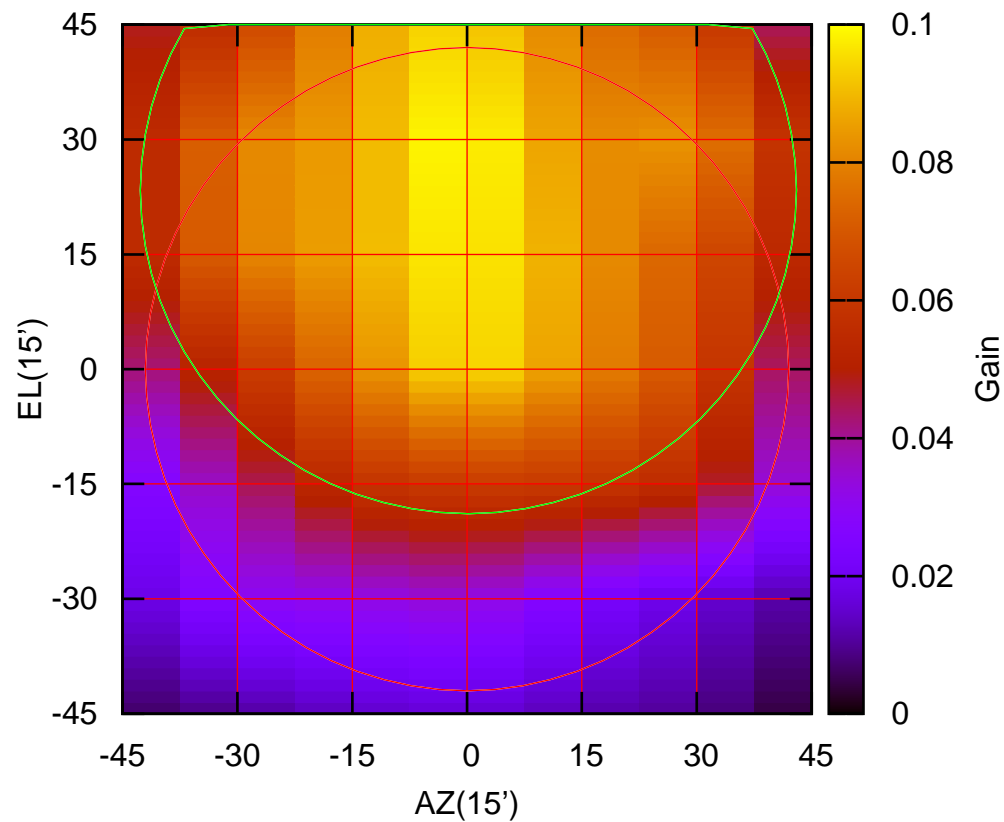
325 MHz.



C03-130 ELOFF= 25.7' ELBEAM= 86.5'

C03-175 AZOFF= 0.2' AZBEAM= 85.7'

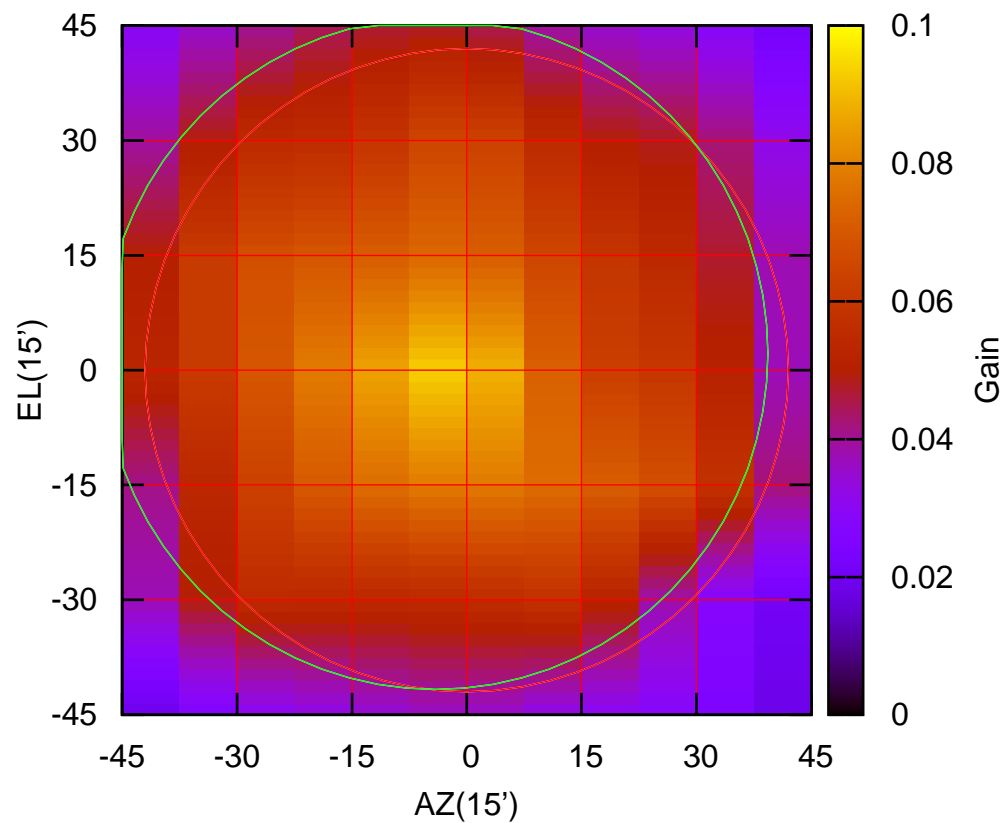
325 MHz.



C03-175 ELOFF= 23.4' ELBEAM= 84.5'

C04-130 AZOFF= -4.1' AZBEAM= 86.8'

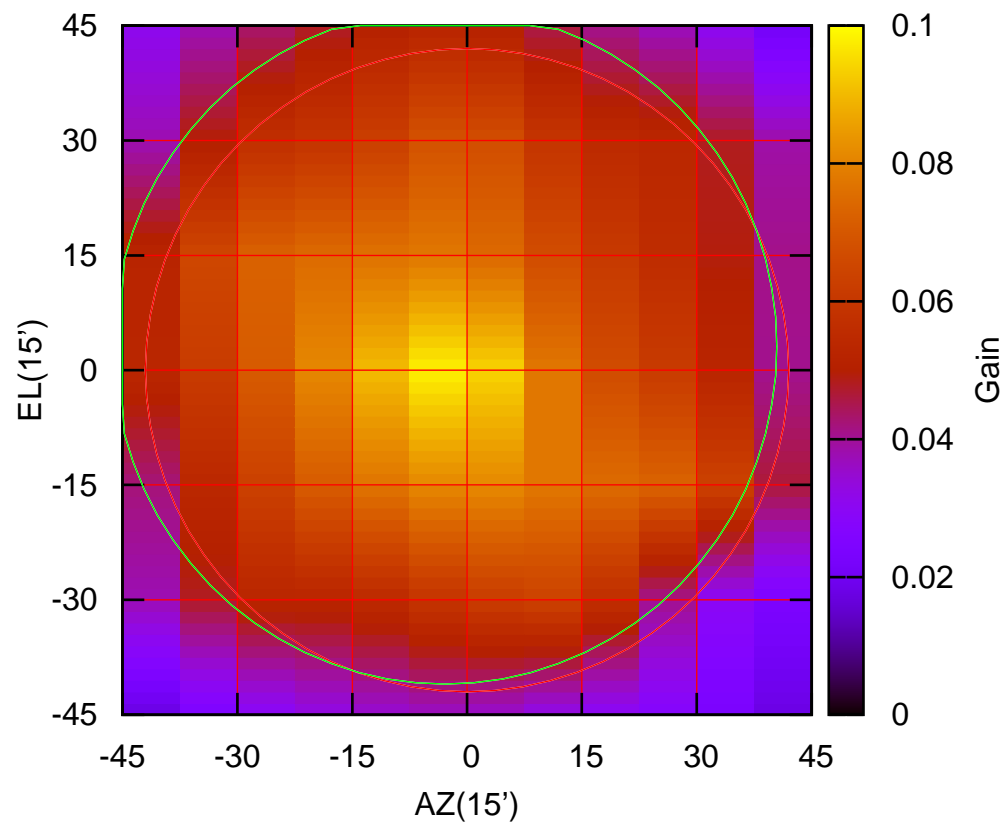
325 MHz.



C04-130 ELOFF= 2.2' ELBEAM= 87.8'

C04-175 AZOFF= -2.9' AZBEAM= 86.7'

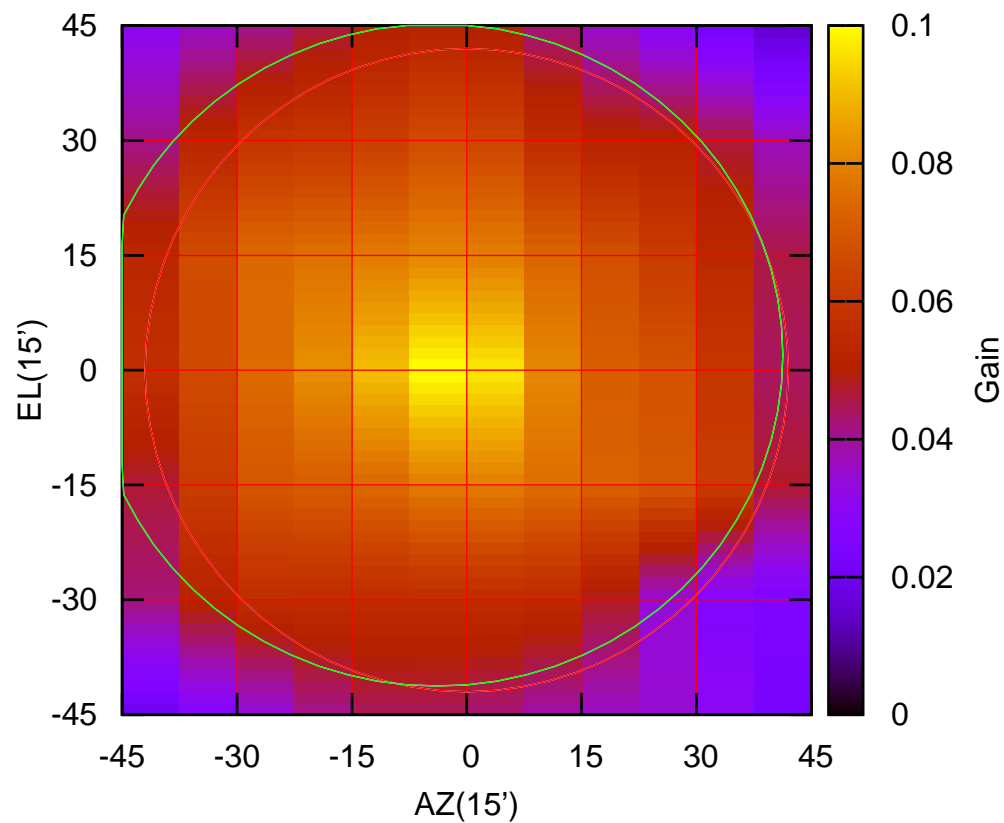
325 MHz.



C04-175 ELOFF= 3.1' ELBEAM= 88.2'

C05-130 AZOFF= -3.9' AZBEAM= 90.3'

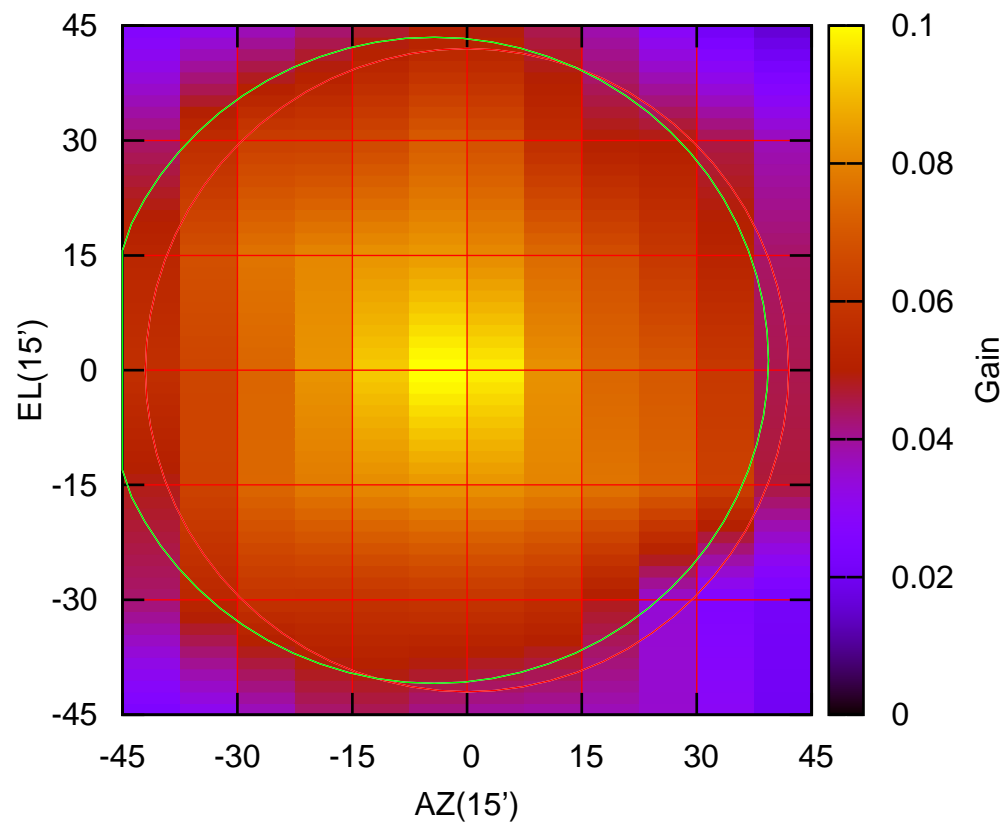
325 MHz.



C05-130 ELOFF= 2.0' ELBEAM= 86.5'

C05-175 AZOFF= -4.3' AZBEAM= 87.3'

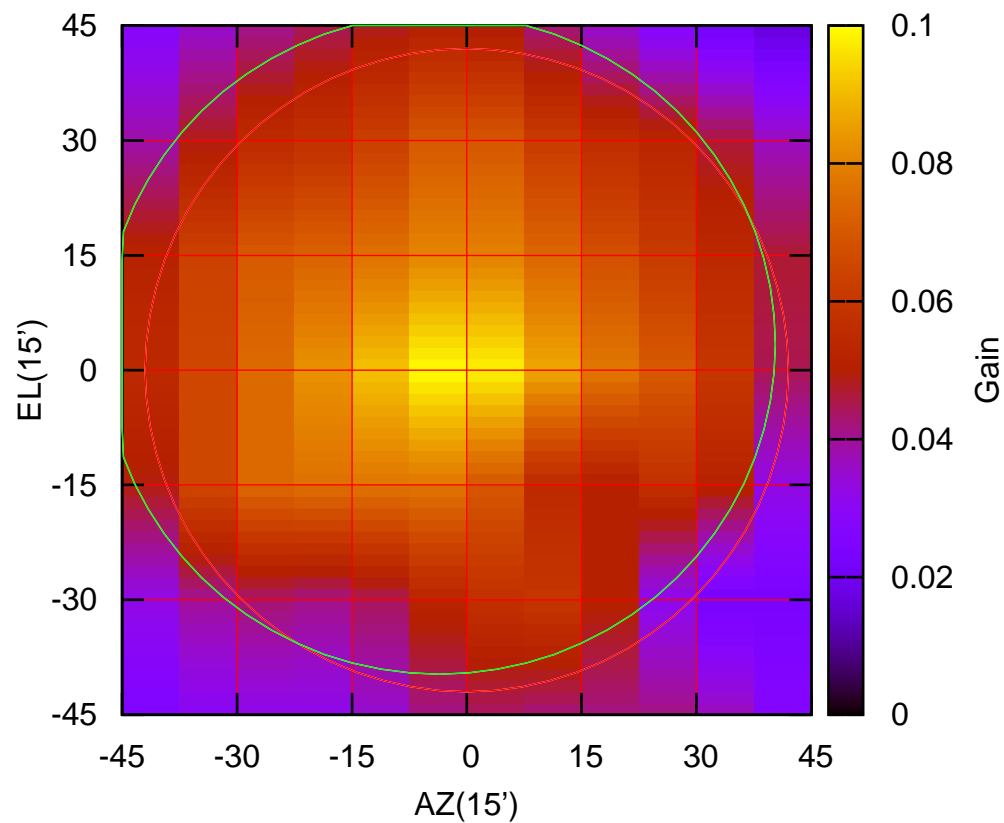
325 MHz.



C05-175 ELOFF= 1.3' ELBEAM= 84.4'

C06-130 AZOFF= -3.6' AZBEAM= 87.8'

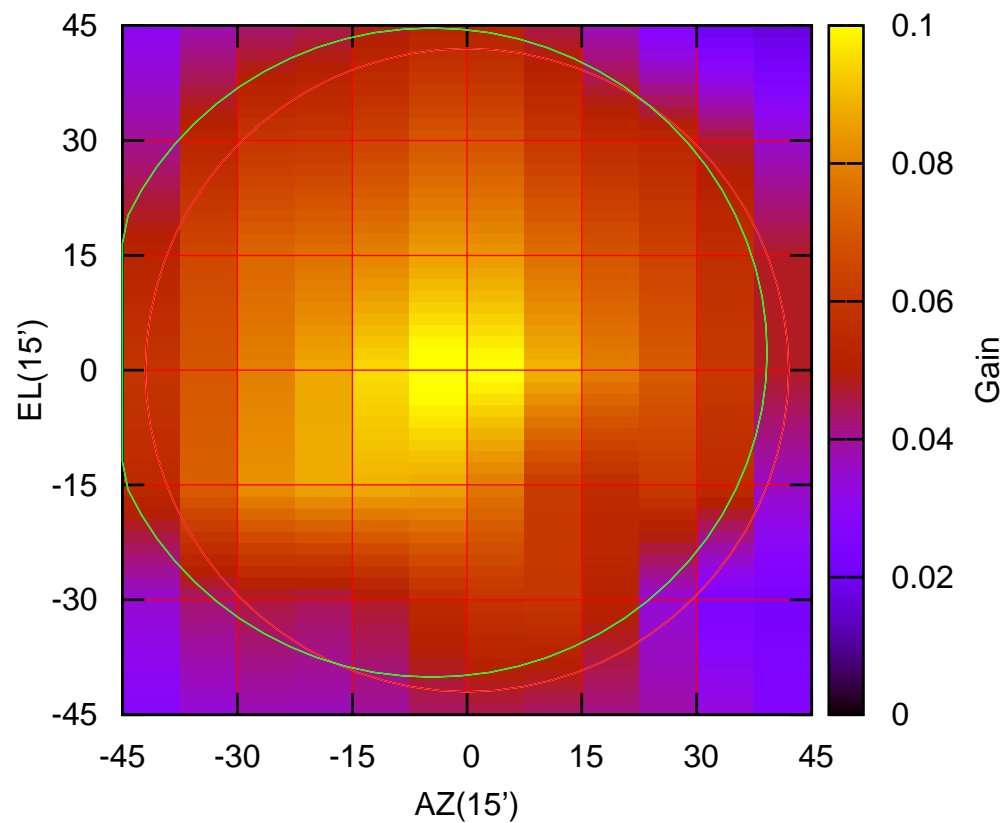
325 MHz.



C06-130 ELOFF= 3.4' ELBEAM= 86.2'

C06-175 AZOFF= -4.6' AZBEAM= 87.6'

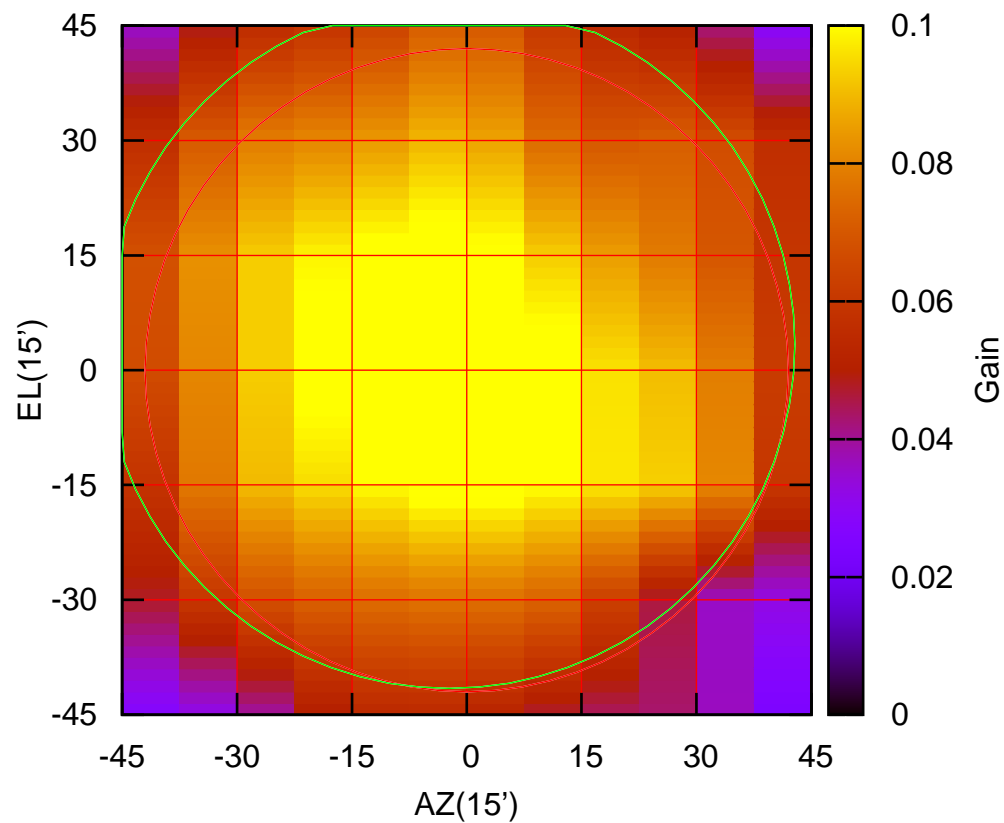
325 MHz.



C06-175 ELOFF= 2.3' ELBEAM= 84.8'

C08-130 AZOFF= -2.3' AZBEAM= 90.3'

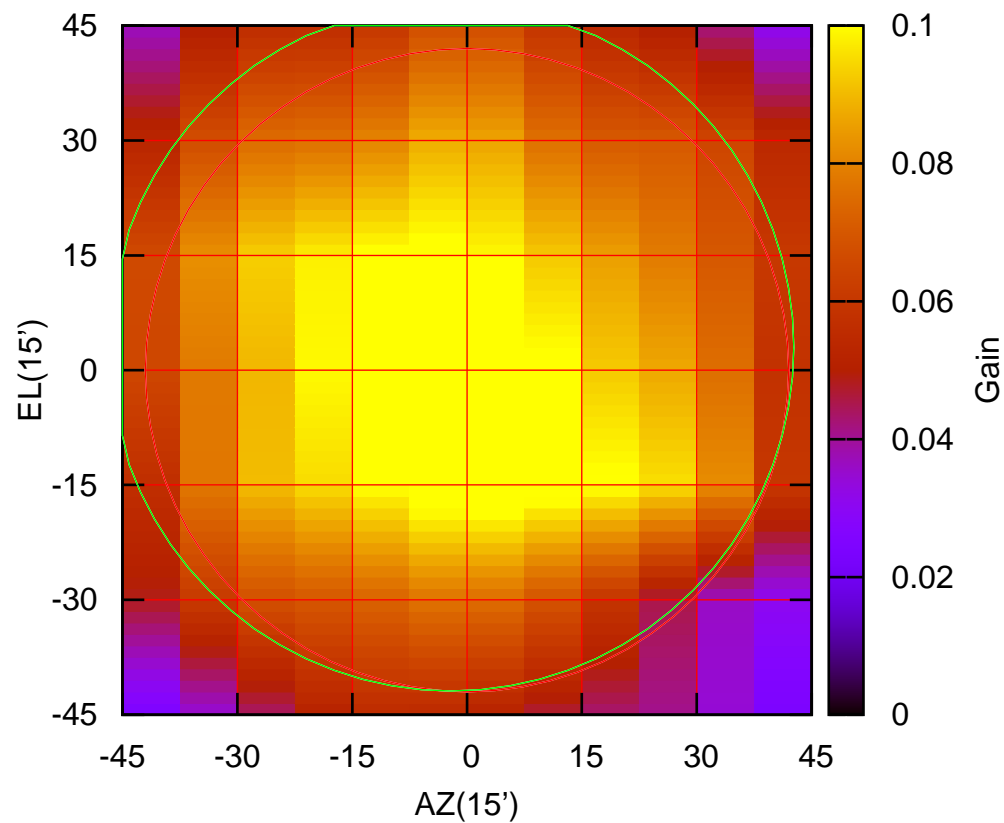
325 MHz.



C08-130 ELOFF= 3.4' ELBEAM= 89.9'

C08-175 AZOFF= -2.1' AZBEAM= 89.5'

325 MHz.

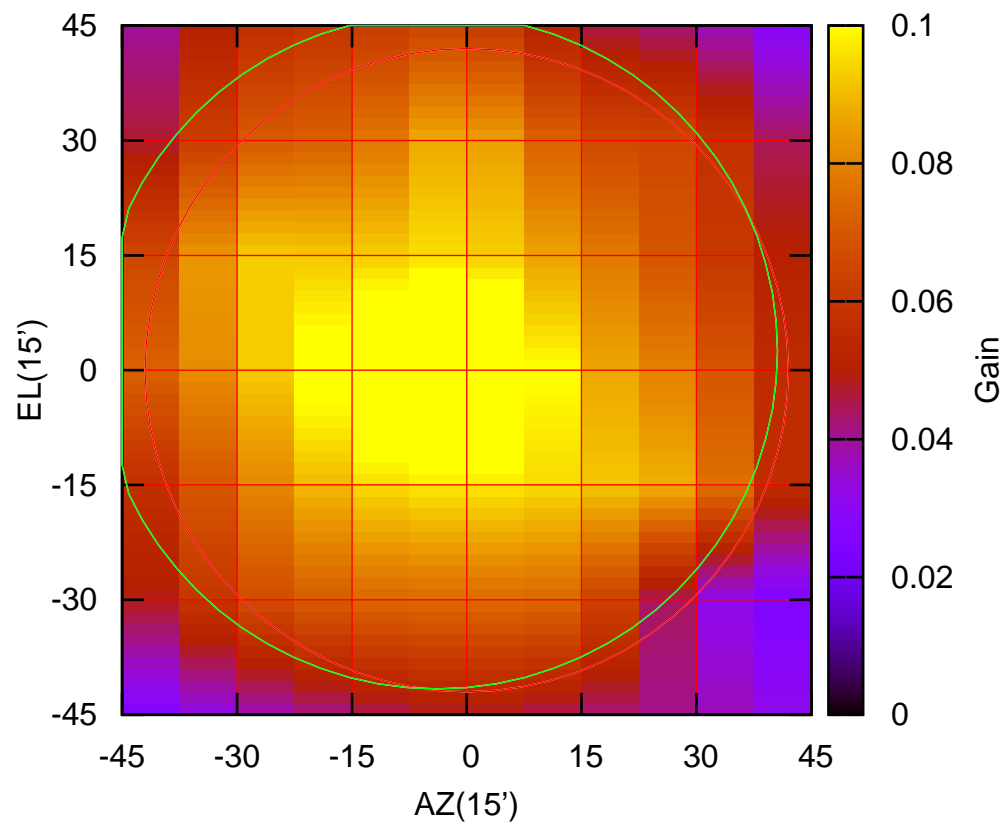


C08-175 ELOFF= 3.0' ELBEAM= 89.8'



C09-130 AZOFF= -3.9' AZBEAM= 88.9'

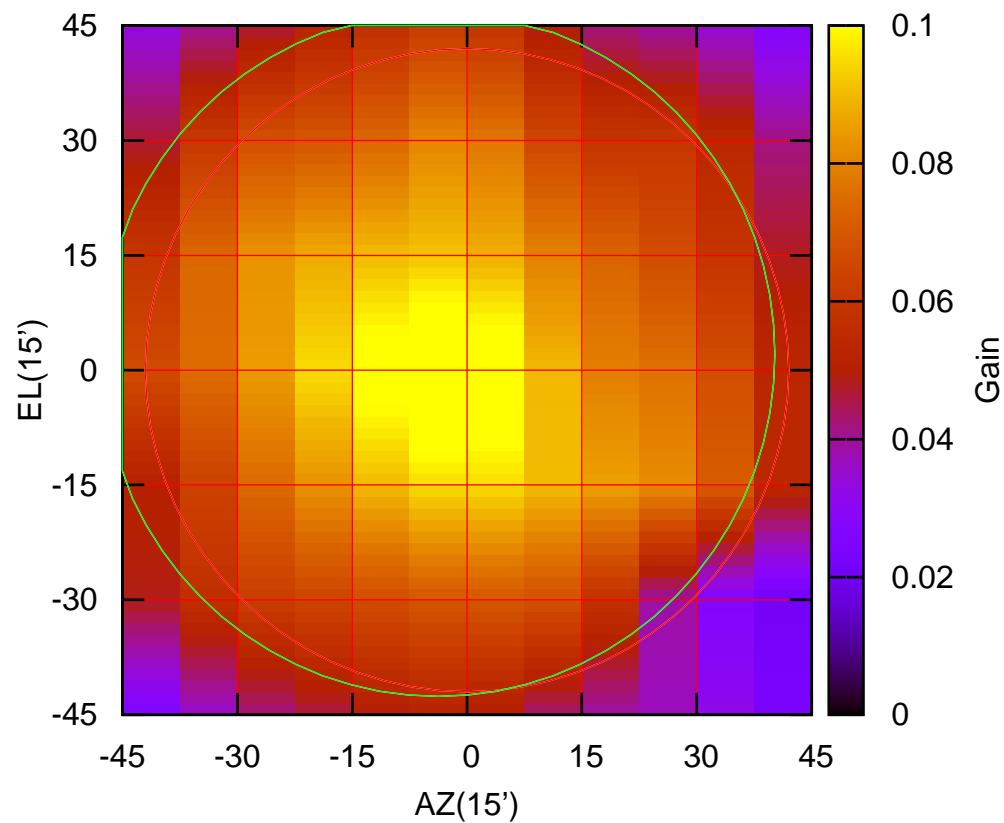
325 MHz.



C09-130 ELOFF= 2.5' ELBEAM= 88.2'

C09-175 AZOFF= -3.8' AZBEAM= 88.0'

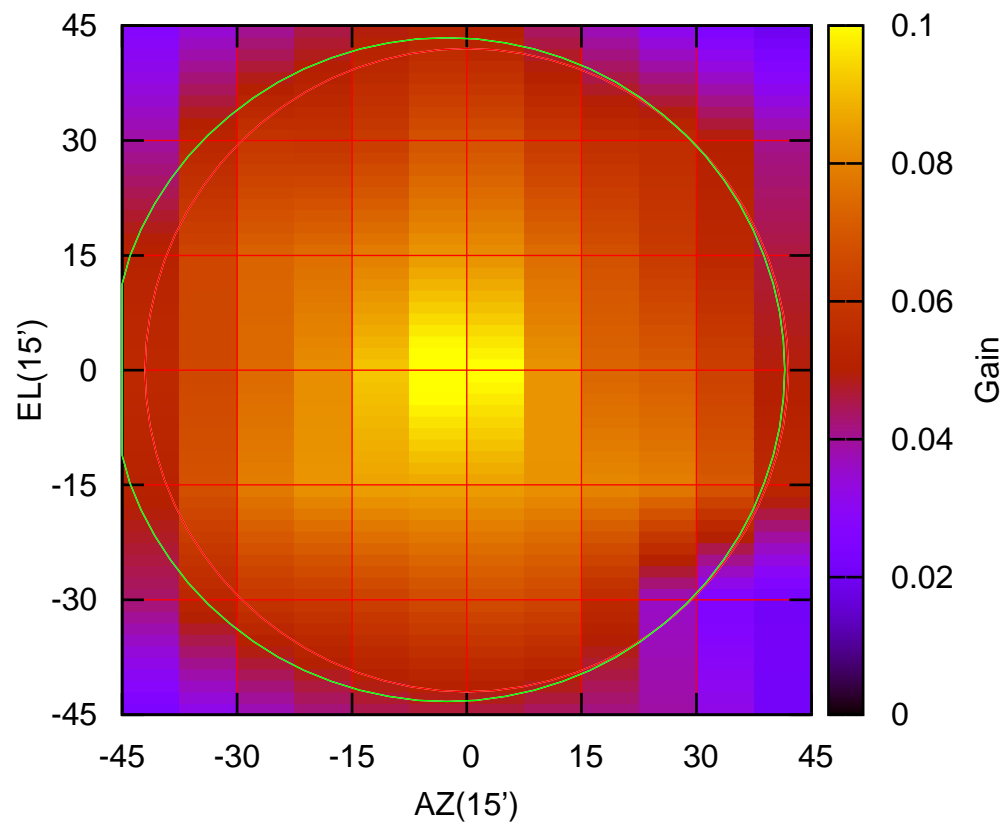
325 MHz.



C09-175 ELOFF= 2.1' ELBEAM= 89.4'

C10-130 AZOFF= -2.6' AZBEAM= 88.2'

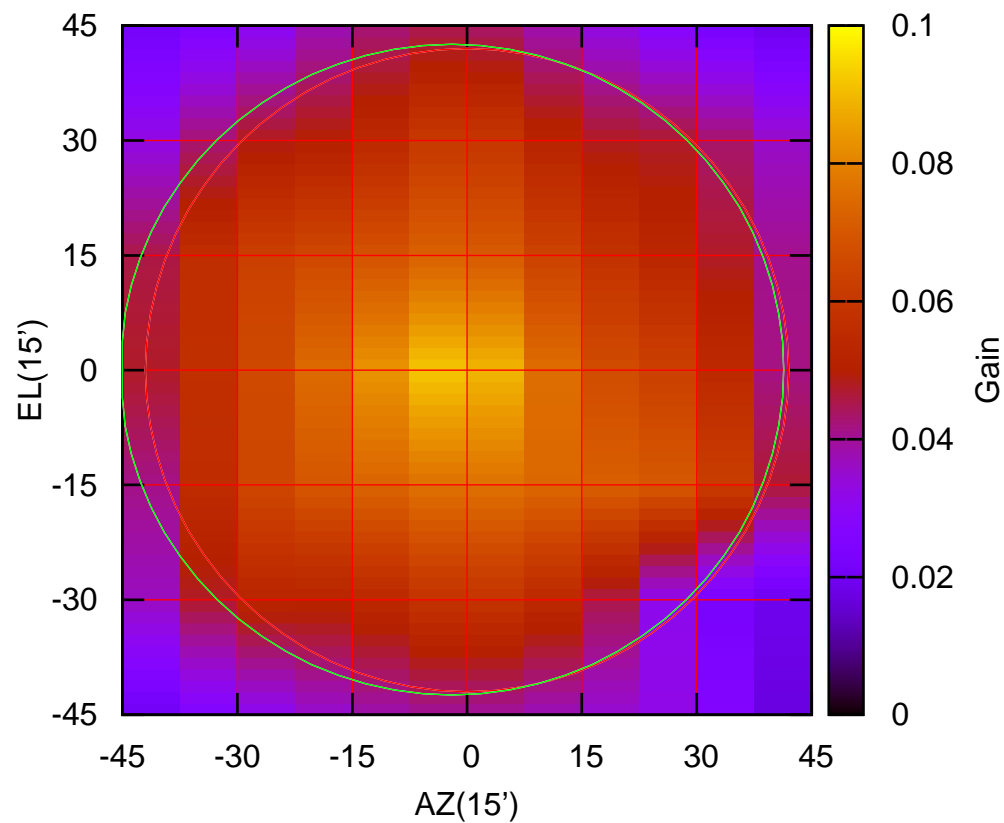
325 MHz.



C10-130 ELOFF= 0.1' ELBEAM= 86.7'

C10-175 AZOFF= -2.0' AZBEAM= 86.7'

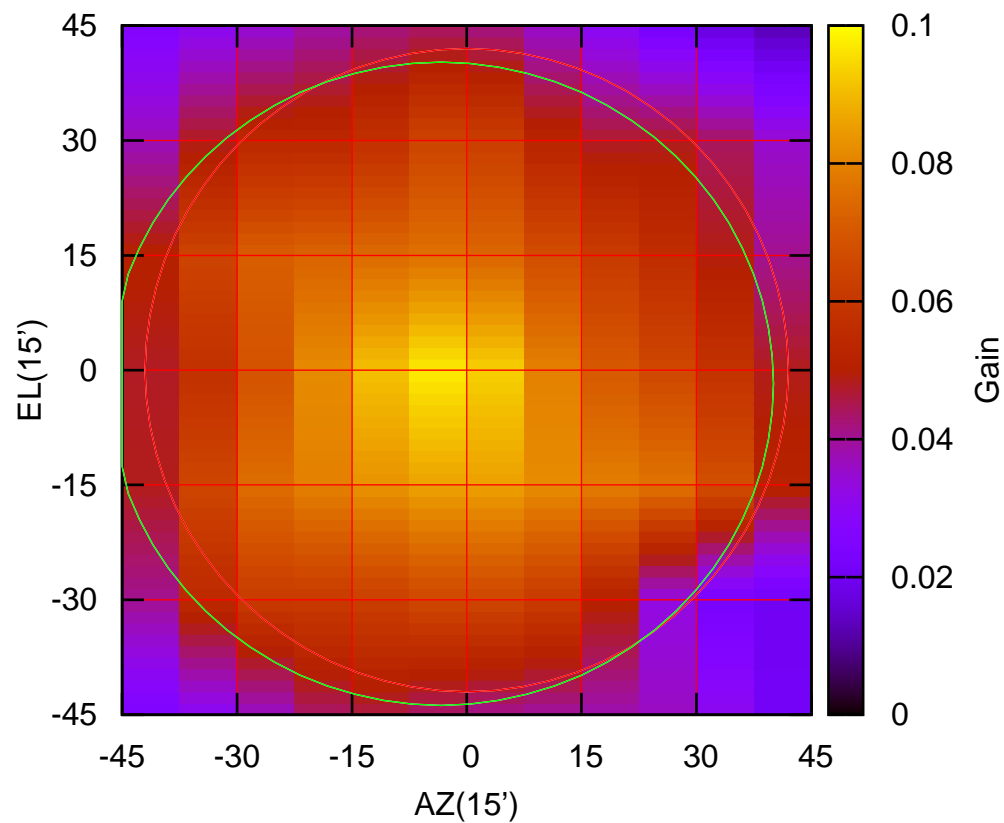
325 MHz.



C10-175 ELOFF= 0.1' ELBEAM= 85.0'

C11-130 AZOFF= -3.4' AZBEAM= 86.9'

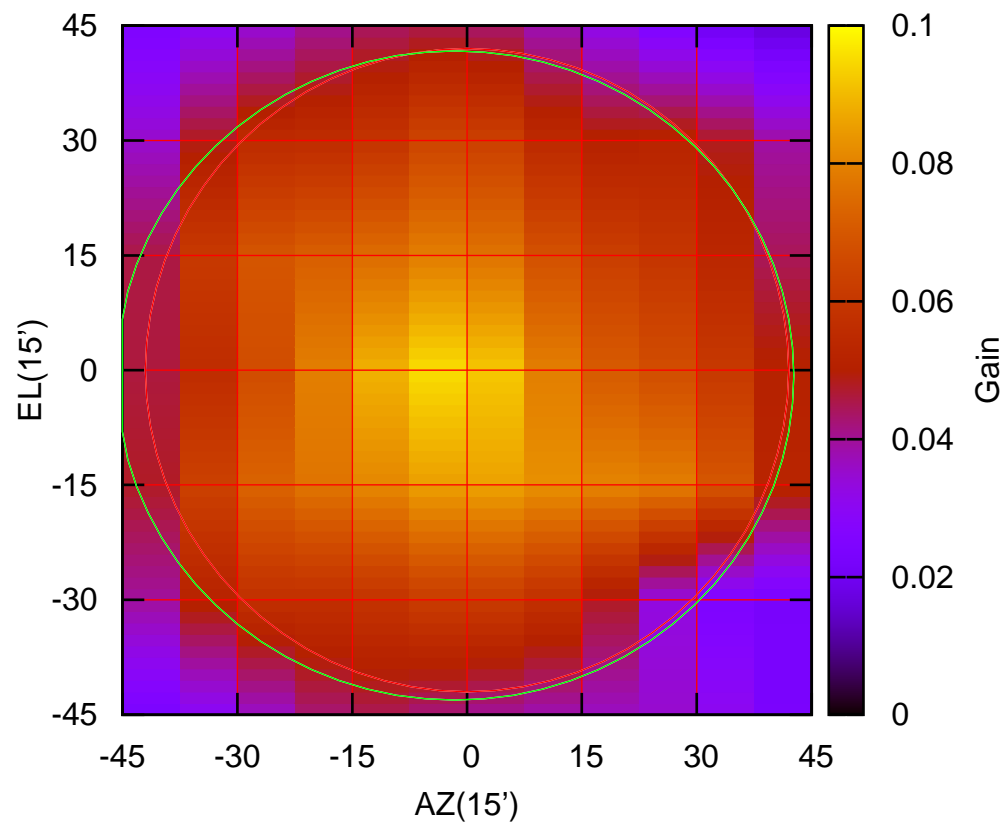
325 MHz.



C11-130 ELOFF= -1.8' ELBEAM= 84.0'

C11-175 AZOFF= -1.6' AZBEAM= 88.5'

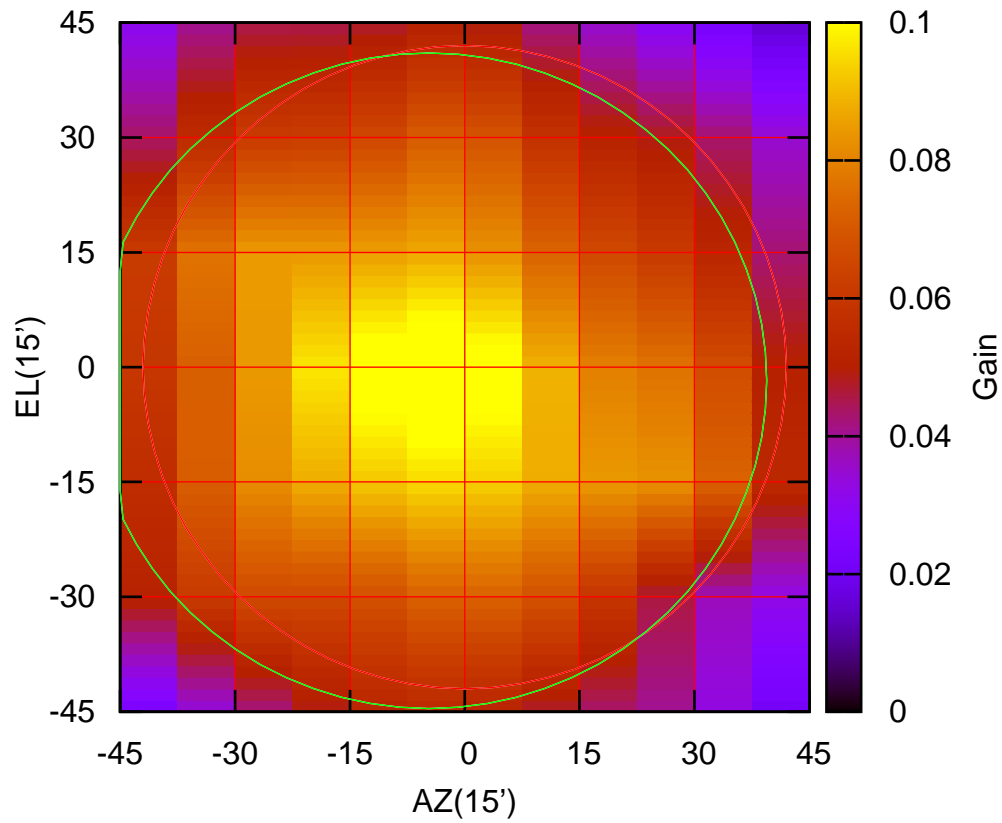
325 MHz.



C11-175 ELOFF= -0.7' ELBEAM= 84.8'

C12-130 AZOFF= -4.7' AZBEAM= 88.2'

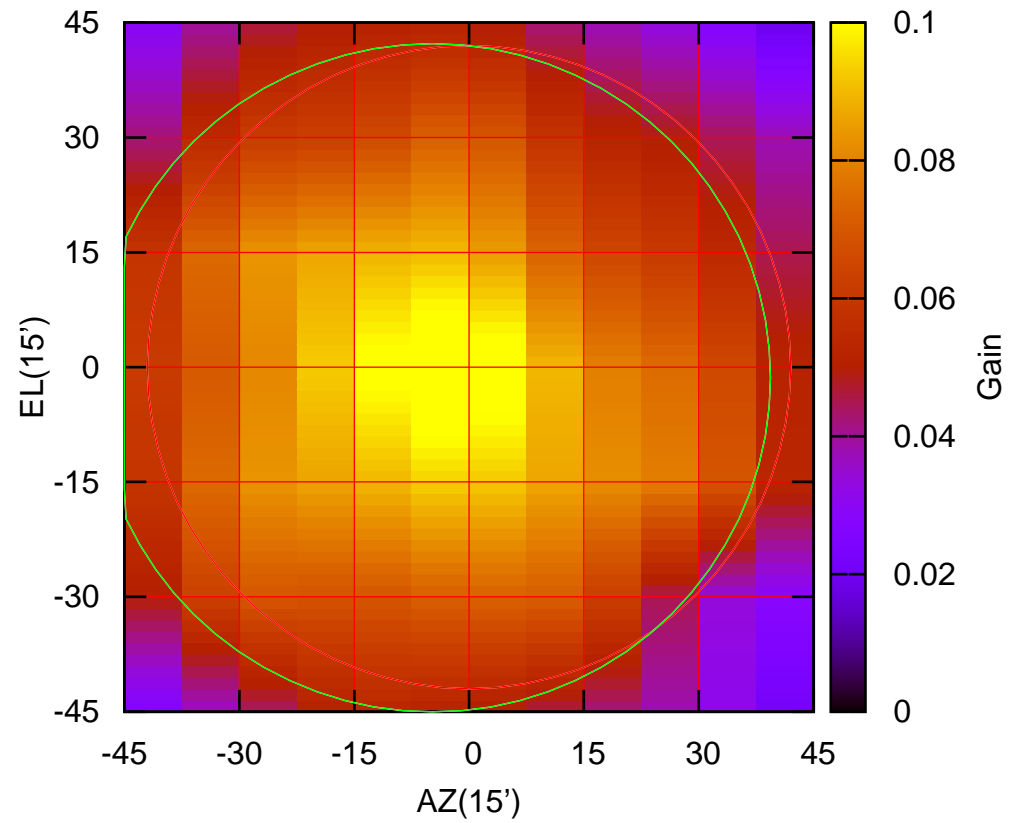
325 MHz.



C12-130 ELOFF= -1.8' ELBEAM= 85.6'

C12-175 AZOFF= -4.8' AZBEAM= 88.3'

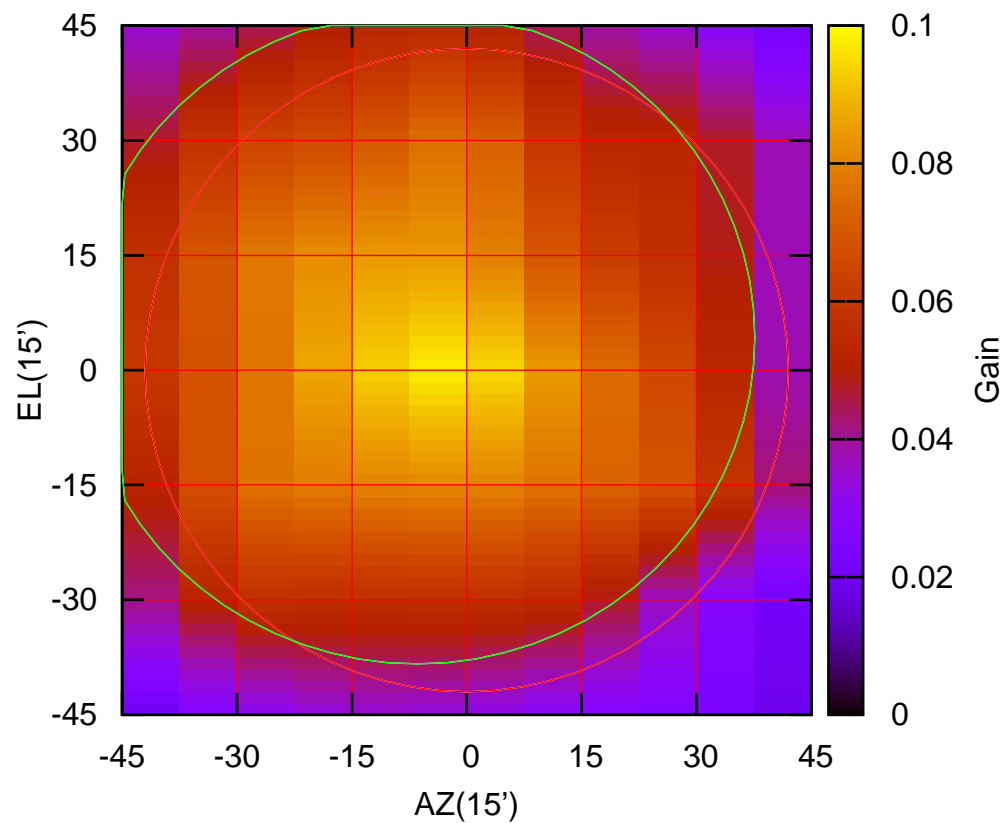
325 MHz.



C12-175 ELOFF= -1.4' ELBEAM= 87.3'

C13-130 AZOFF= -6.5' AZBEAM= 88.2'

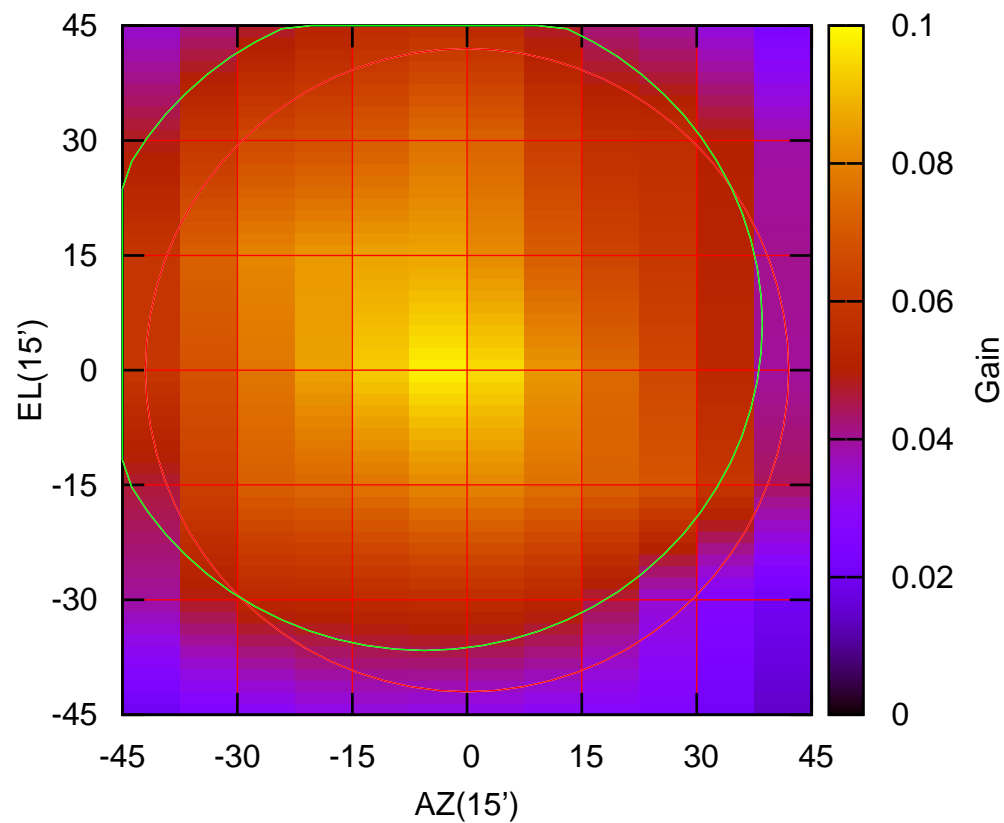
325 MHz.



C13-130 ELOFF= 4.3' ELBEAM= 85.3'

C13-175 AZOFF= -5.6' AZBEAM= 88.3'

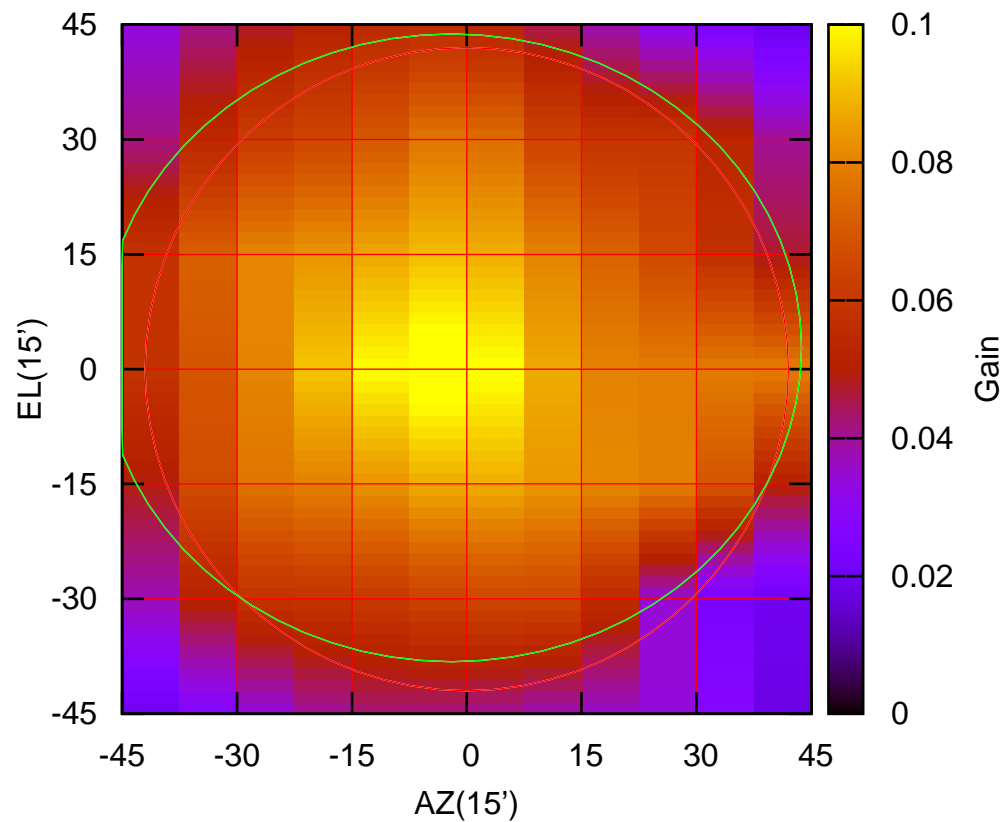
325 MHz.



C13-175 ELOFF= 6.0' ELBEAM= 85.2'

C14-130 AZOFF= -2.0' AZBEAM= 91.4'

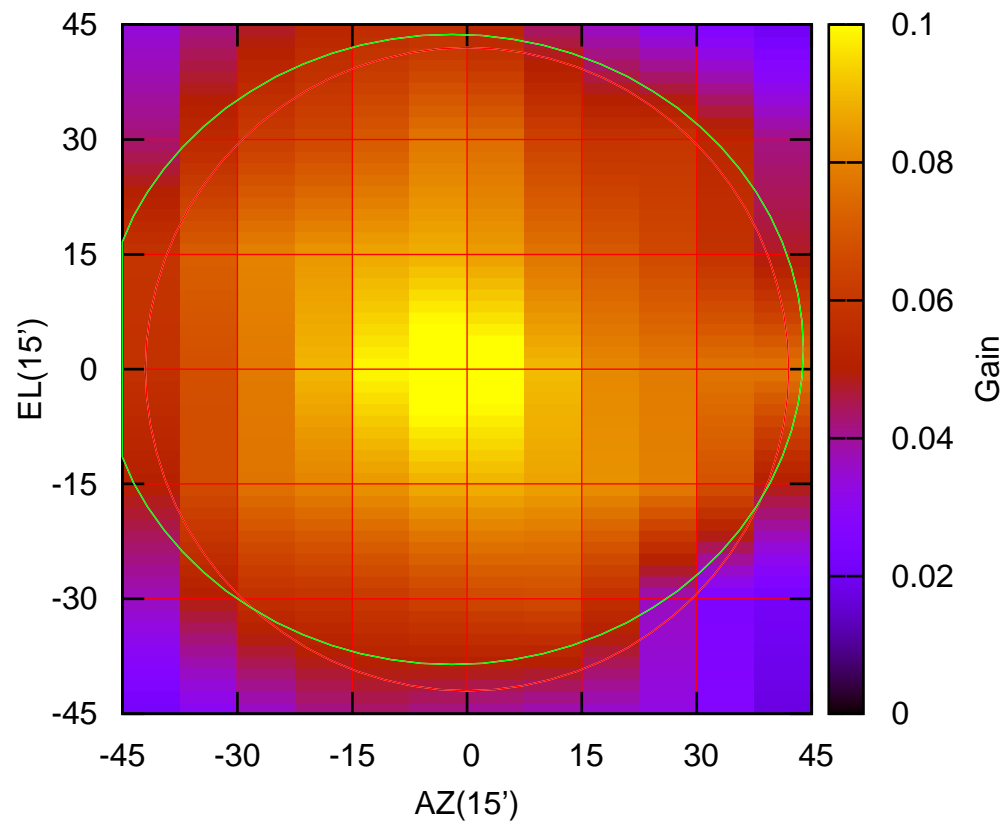
325 MHz.



C14-130 ELOFF= 2.8' ELBEAM= 82.0'

C14-175 AZOFF= -2.0' AZBEAM= 91.8'

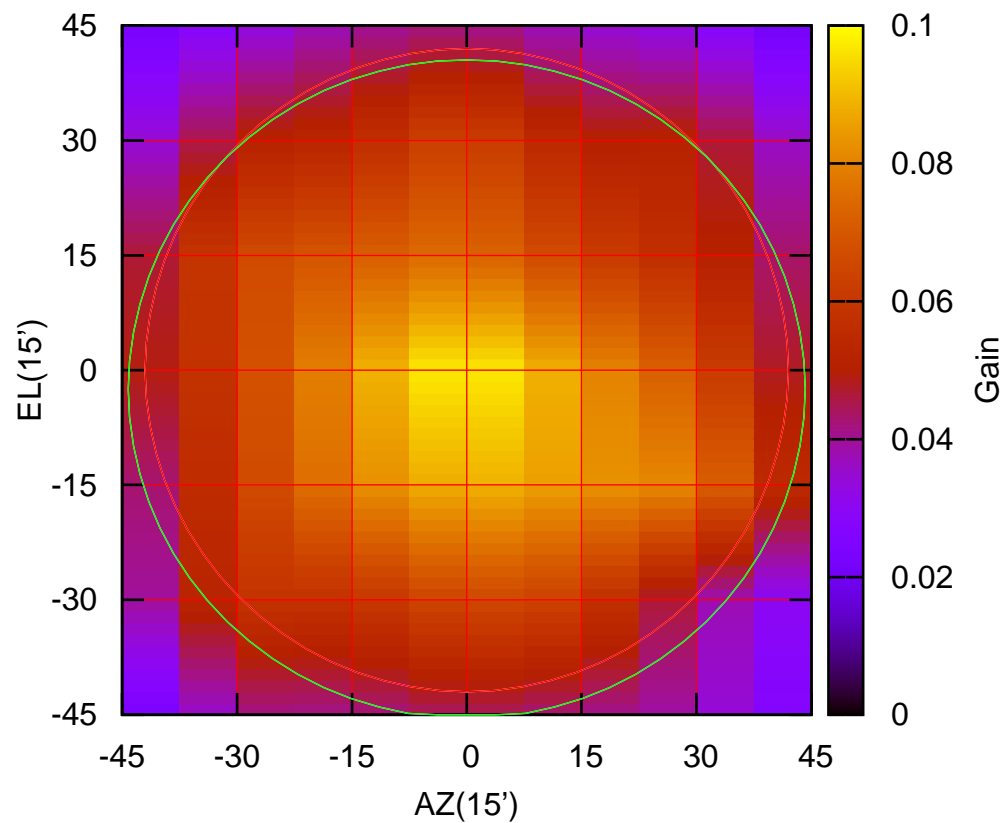
325 MHz.



C14-175 ELOFF= 2.6' ELBEAM= 82.3'

W01-130 AZOFF= 0.0' AZBEAM= 88.4'

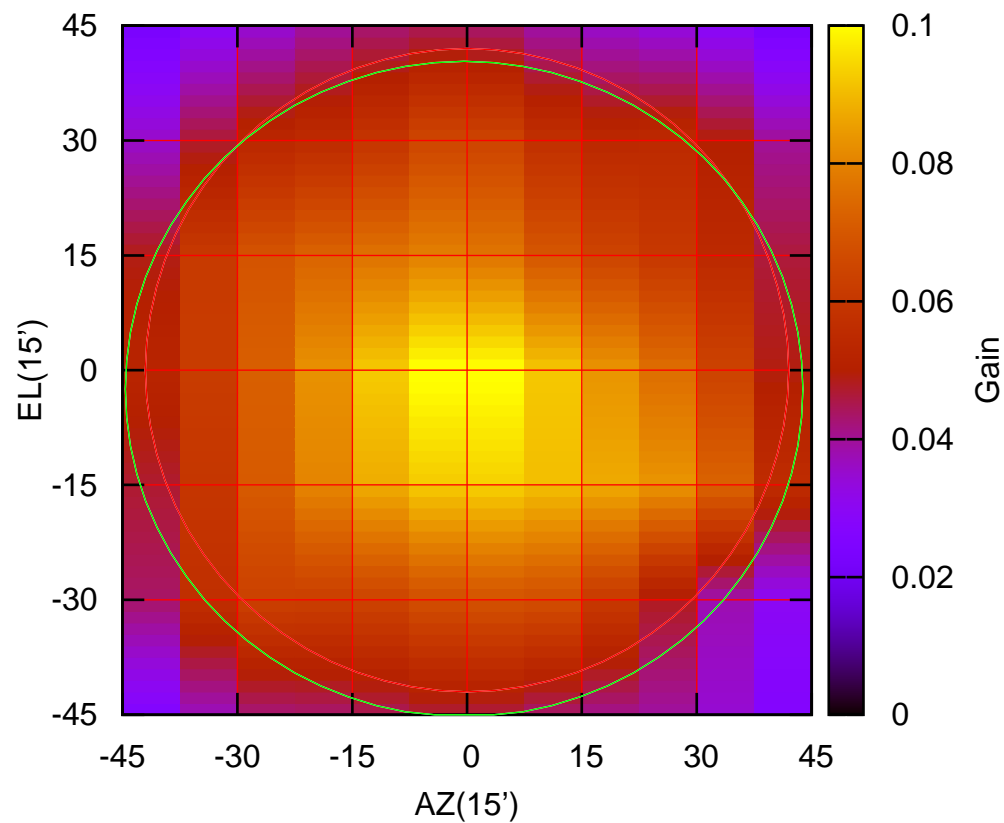
325 MHz.



W01-130 ELOFF= -2.5' ELBEAM= 86.0'

W01-175 AZOFF= -0.4' AZBEAM= 88.5'

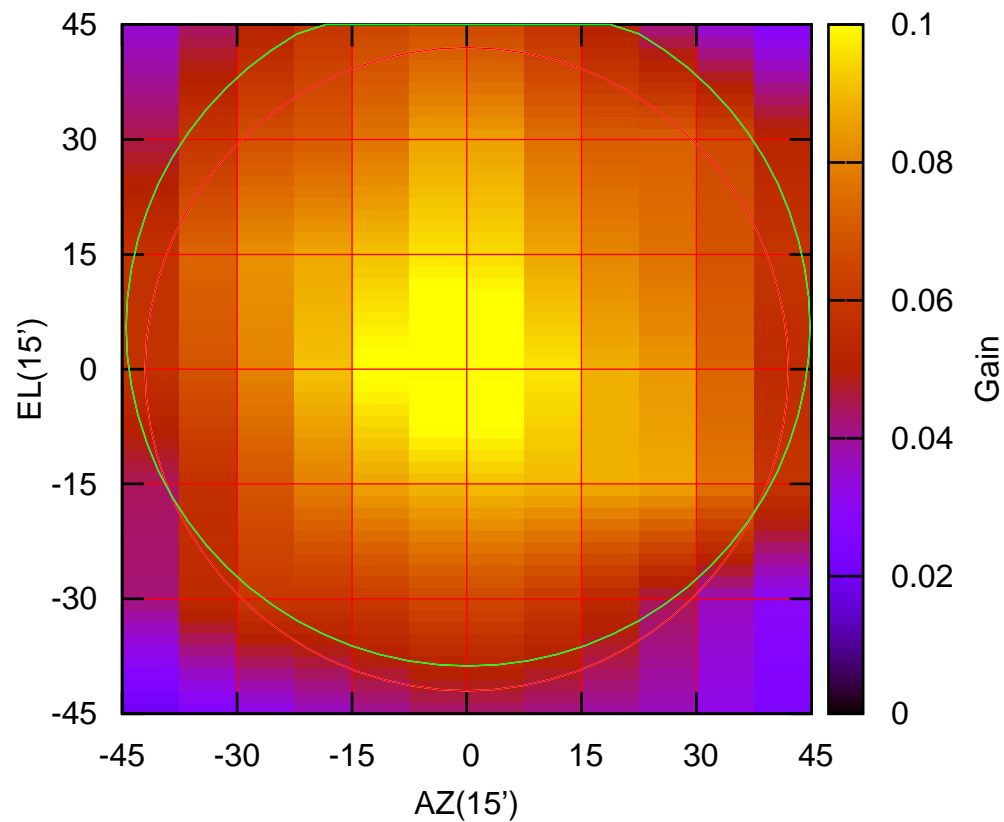
325 MHz.



W01-175 ELOFF= -2.5' ELBEAM= 85.6'

W02-130 AZOFF= 0.2' AZBEAM= 89.3'

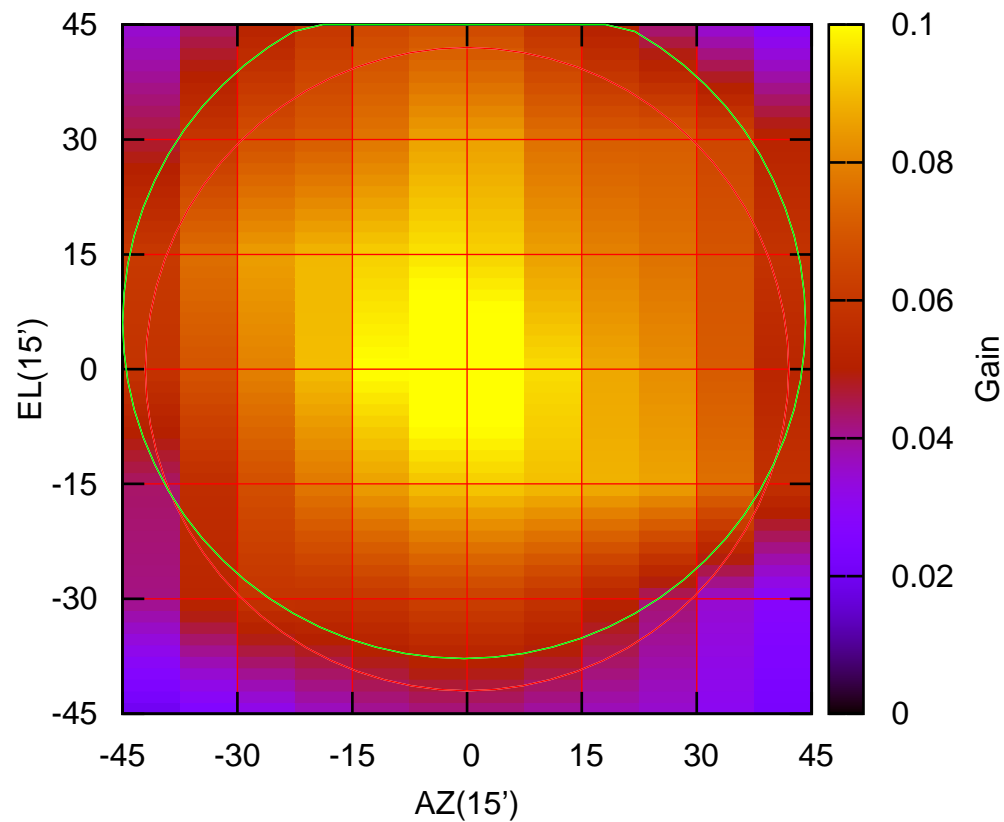
325 MHz.



W02-130 ELOFF= 5.5' ELBEAM= 88.5'

W02-175 AZOFF= -0.4' AZBEAM= 89.2'

325 MHz.

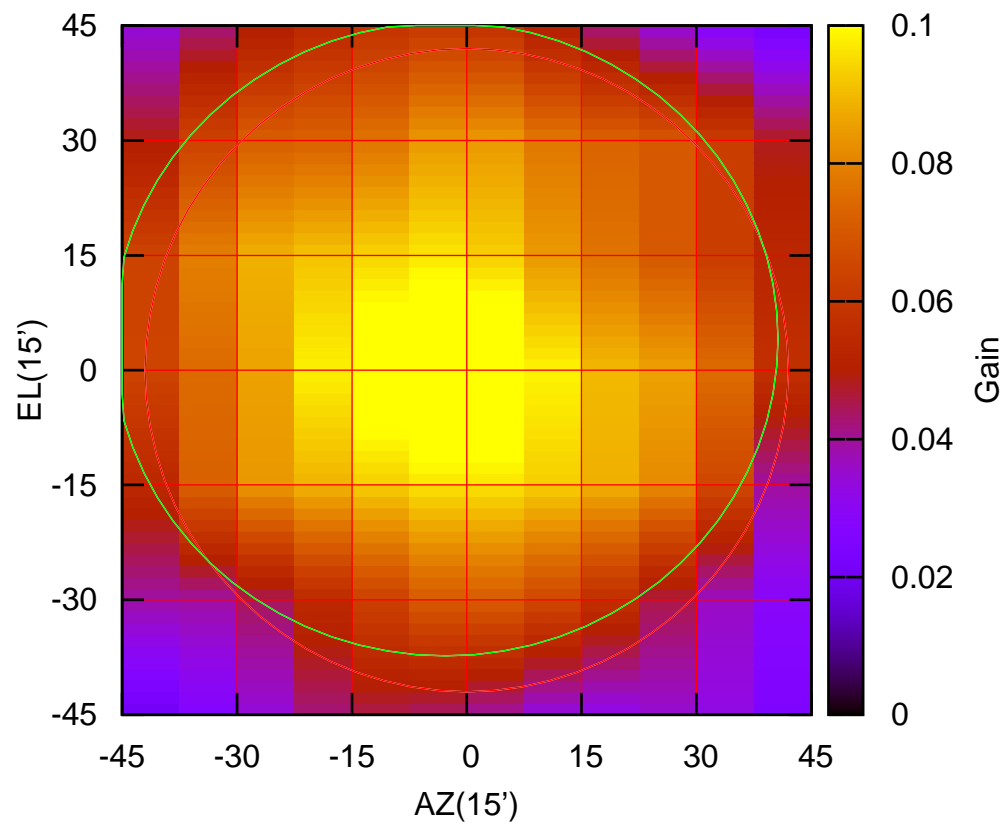


W02-175 ELOFF= 6.1' ELBEAM= 87.8'



W03-130 AZOFF= -2.8' AZBEAM= 86.9'

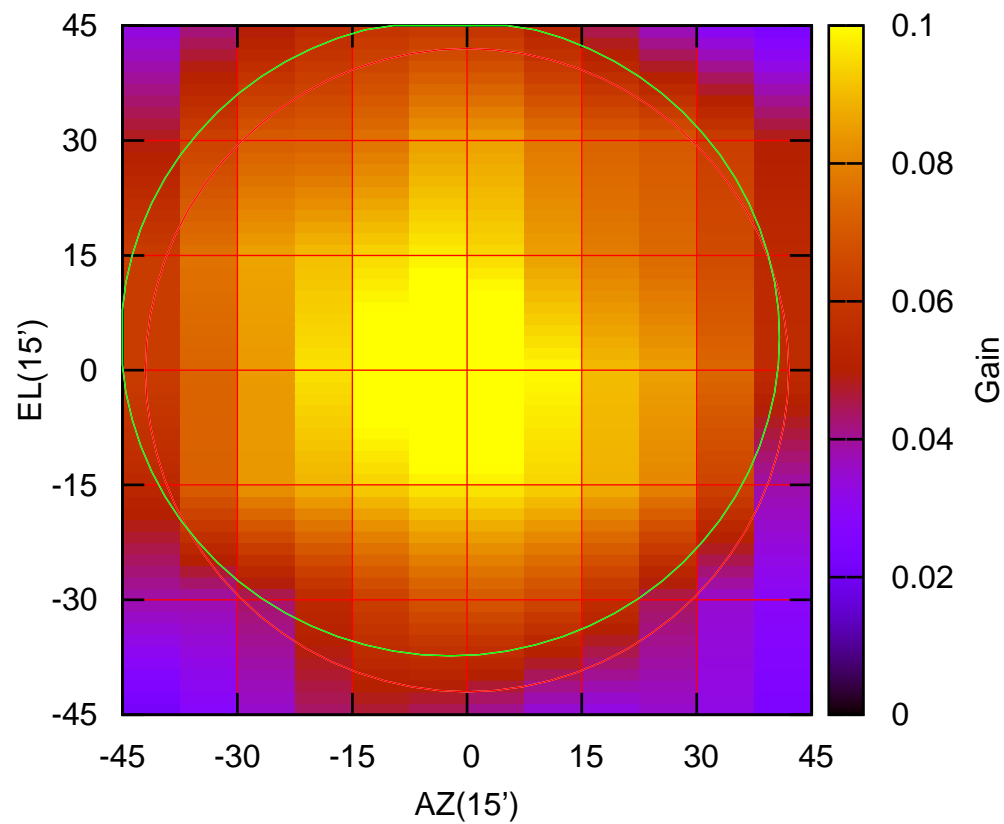
325 MHz.



W03-130 ELOFF= 4.1' ELBEAM= 82.8'

W03-175 AZOFF= -2.2' AZBEAM= 86.0'

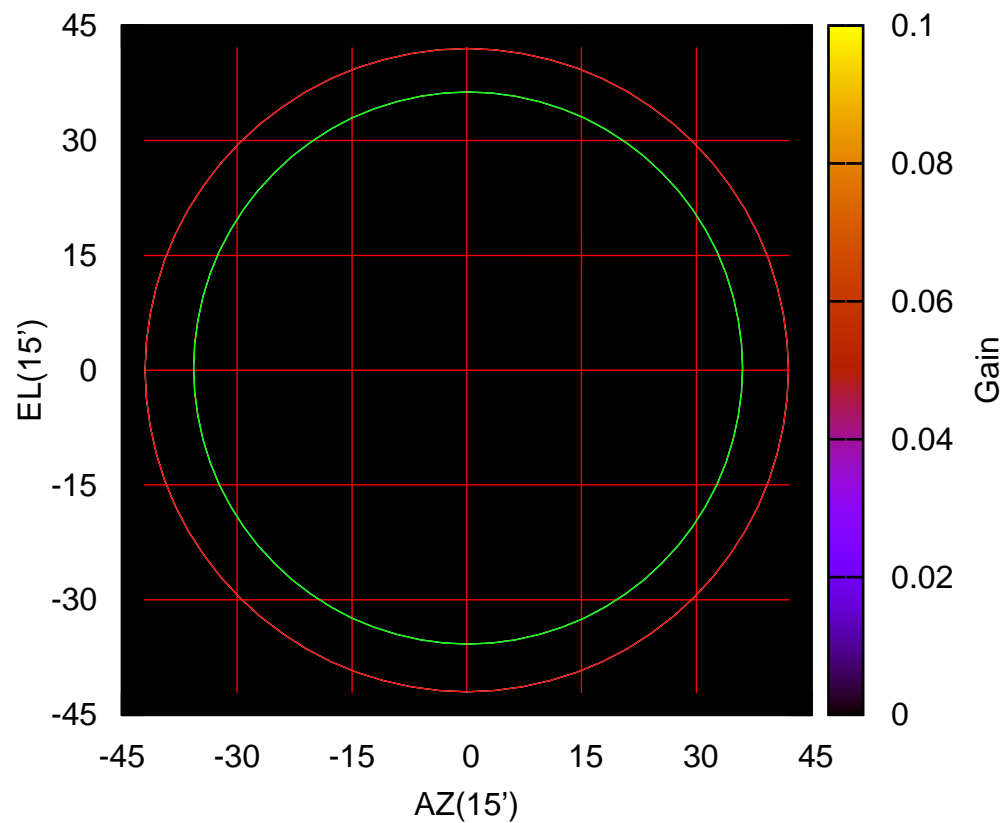
325 MHz.



W03-175 ELOFF= 4.3' ELBEAM= 83.2'

W04-130 AZOFF= 0.2' AZBEAM= 71.7'

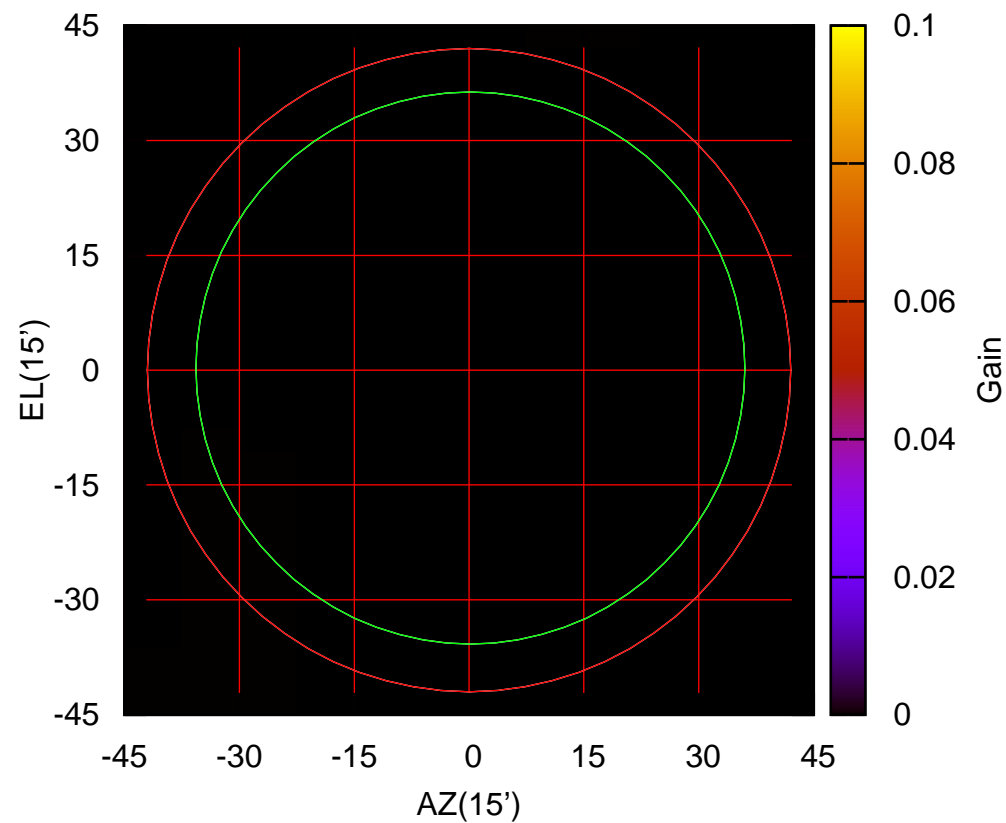
325 MHz.



W04-130 ELOFF= 0.3' ELBEAM= 72.1'

W04-175 AZOFF= 0.2' AZBEAM= 71.7'

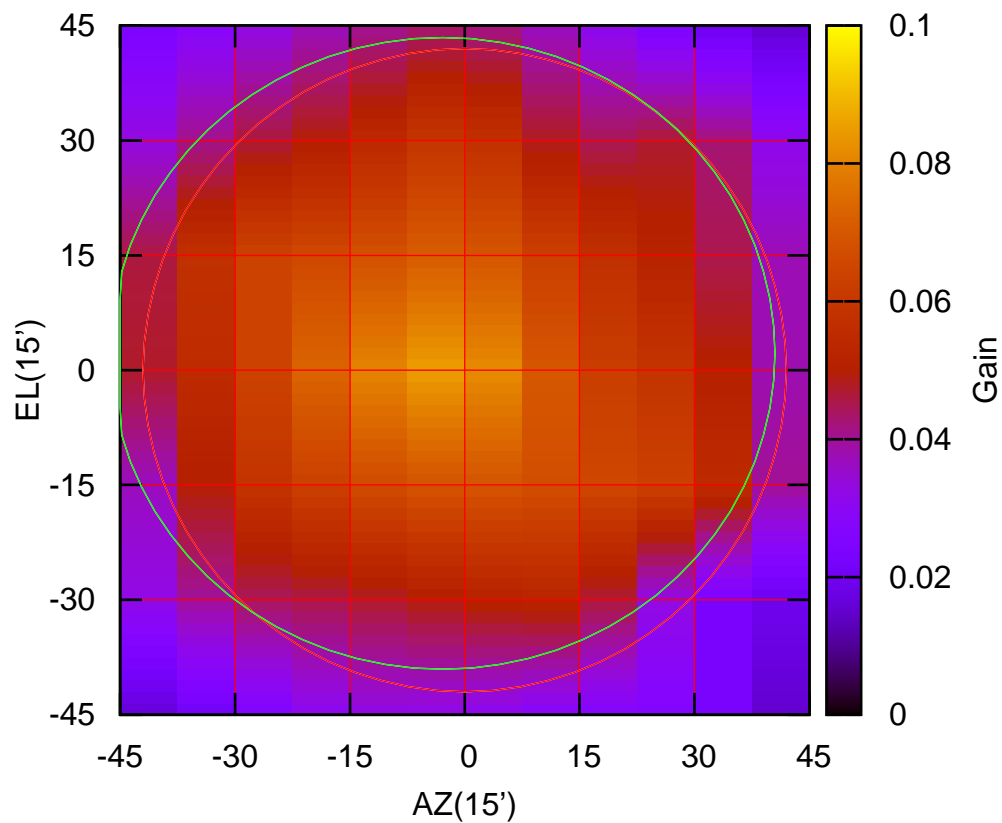
325 MHz.



W04-175 ELOFF= 0.3' ELBEAM= 72.1'

W05-130 AZOFF= -2.9' AZBEAM= 86.8'

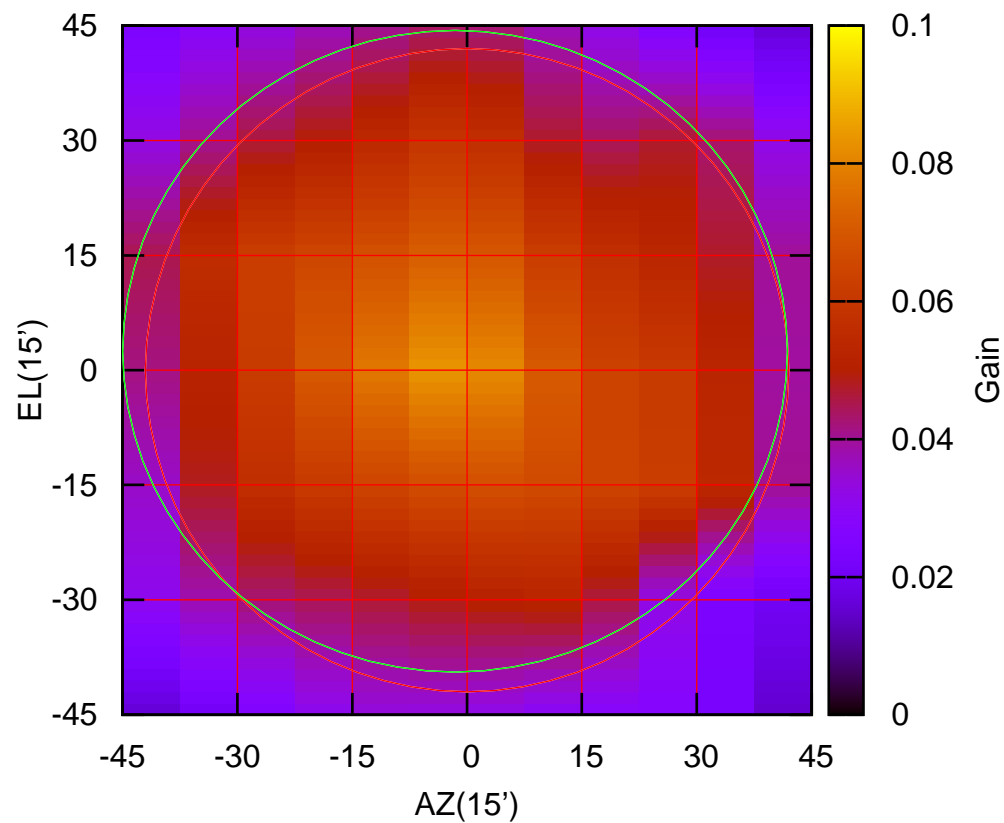
325 MHz.



W05-130 ELOFF= 2.2' ELBEAM= 82.5'

W05-175 AZOFF= -1.6' AZBEAM= 86.8'

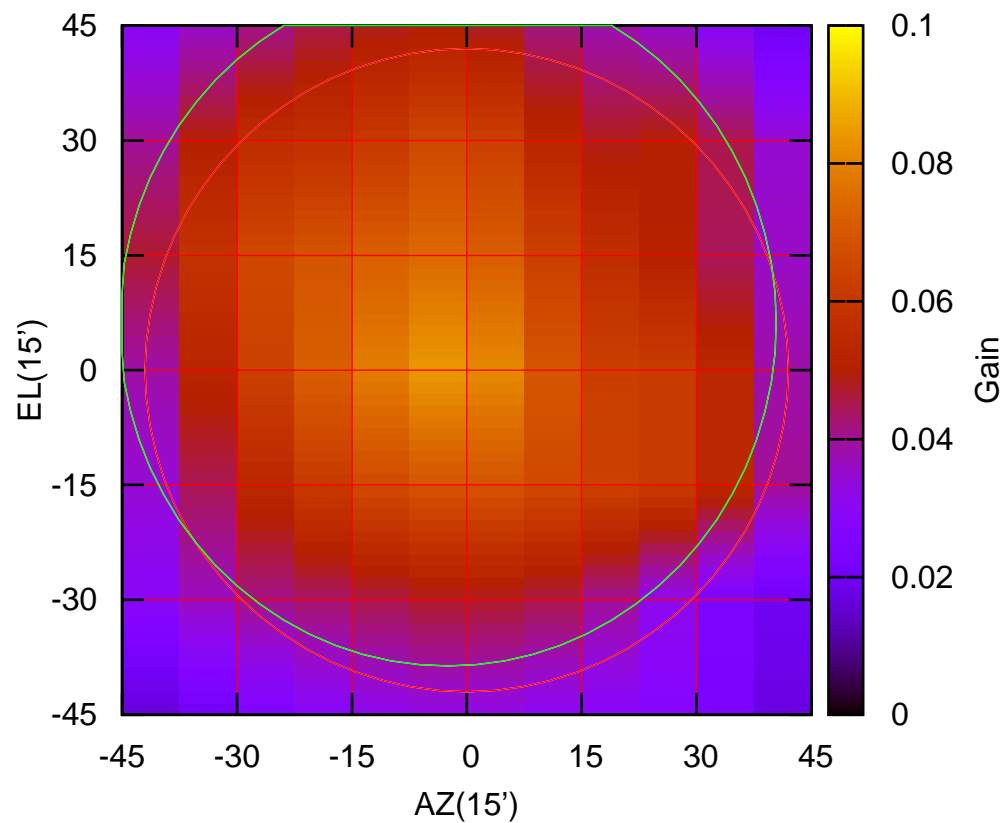
325 MHz.



W05-175 ELOFF= 2.5' ELBEAM= 83.8'

W06-130 AZOFF= -2.5' AZBEAM= 85.8'

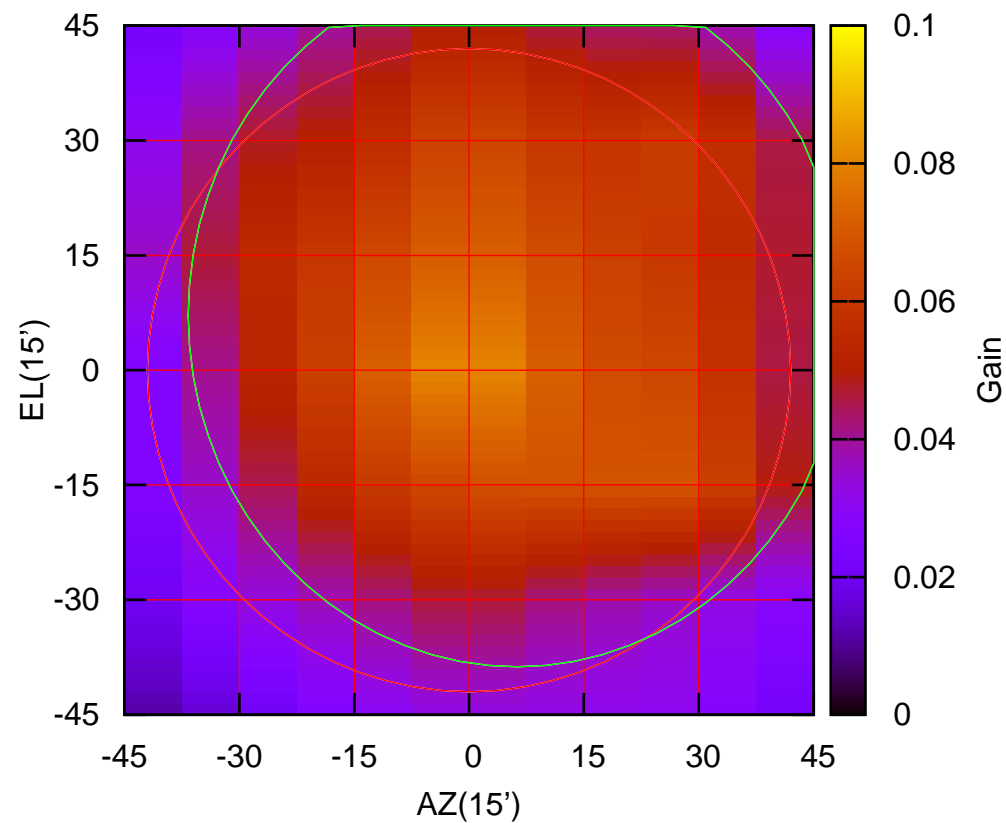
325 MHz.



W06-130 ELOFF= 6.2' ELBEAM= 89.7'

W06-175 AZOFF= 6.3' AZBEAM= 85.9'

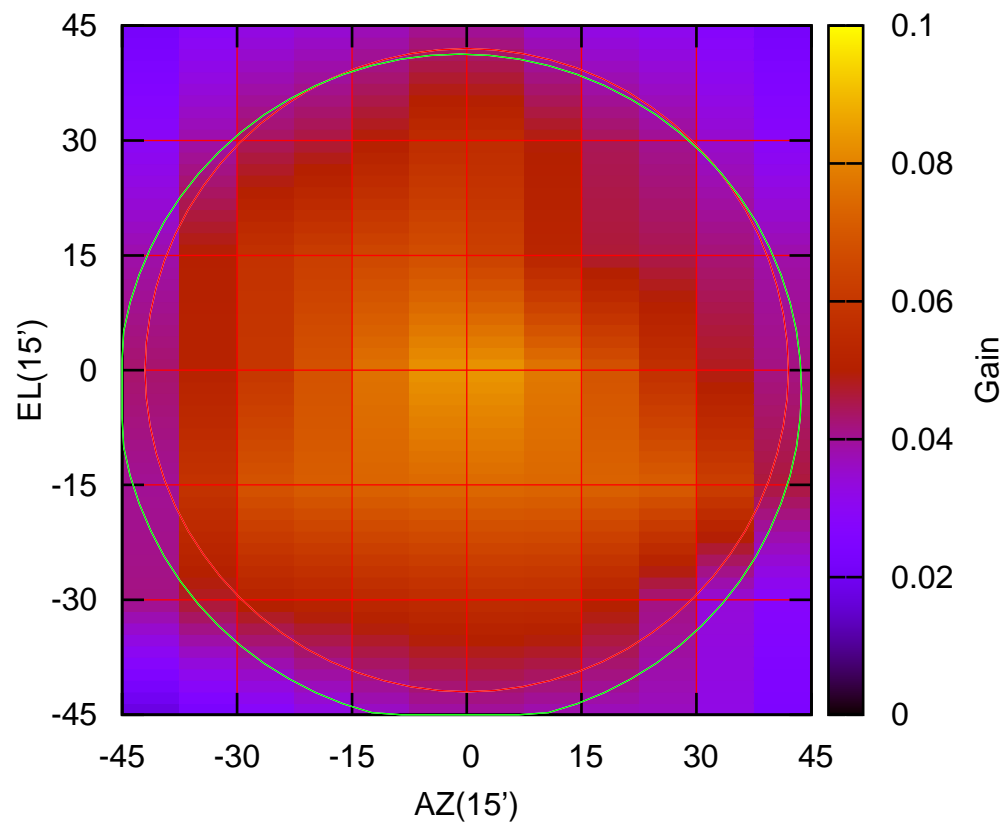
325 MHz.



W06-175 ELOFF= 7.2' ELBEAM= 91.8'

E02-130 AZOFF= -0.9' AZBEAM= 89.2'

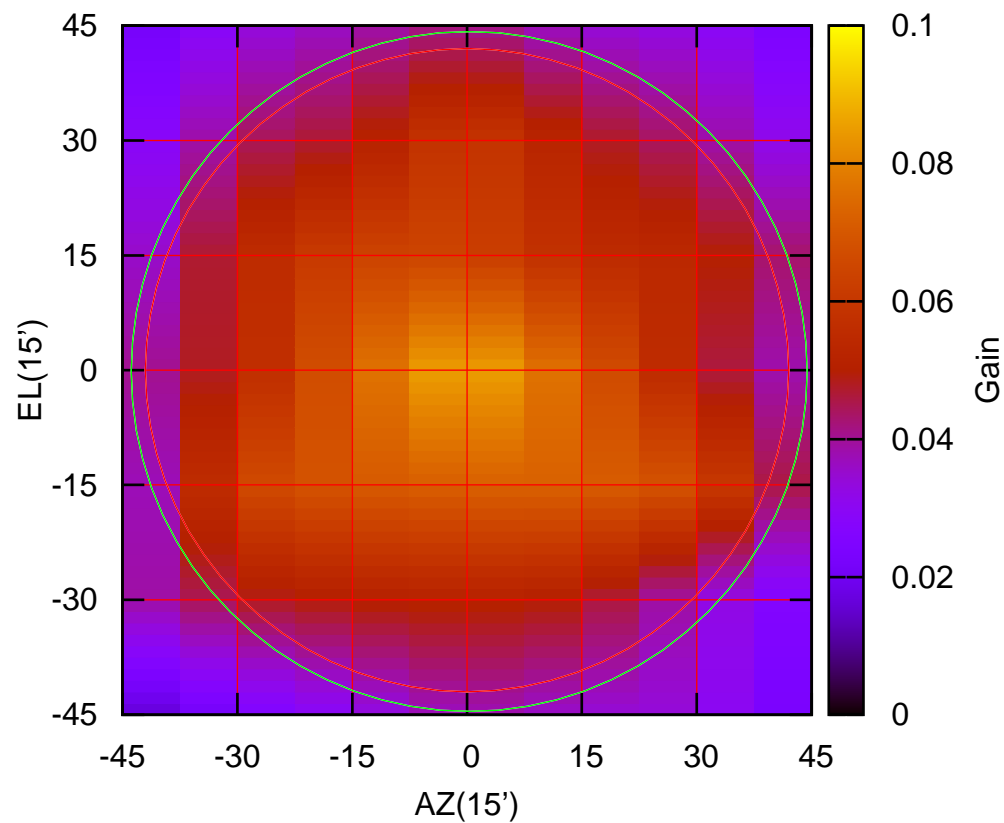
325 MHz.



E02-130 ELOFF= -2.5' ELBEAM= 87.5'

E02-175 AZOFF= 0.3' AZBEAM= 88.3'

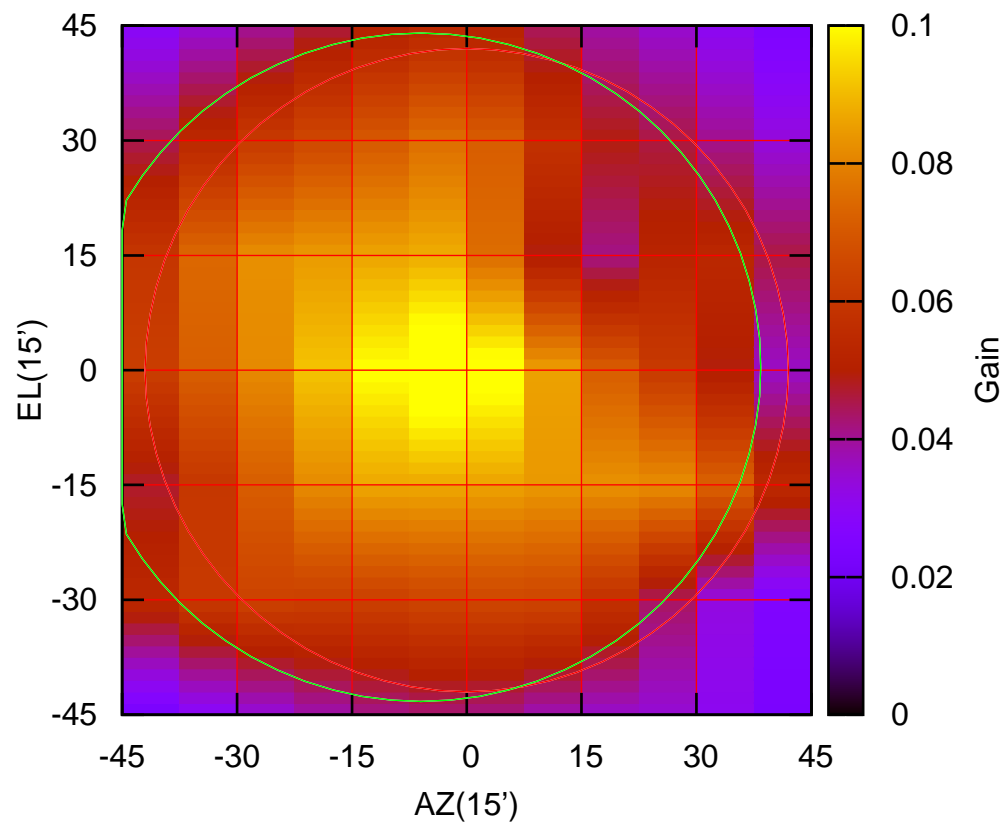
325 MHz.



E02-175 ELOFF= -0.2' ELBEAM= 88.8'

E03-130 AZOFF= -6.0' AZBEAM= 88.8'

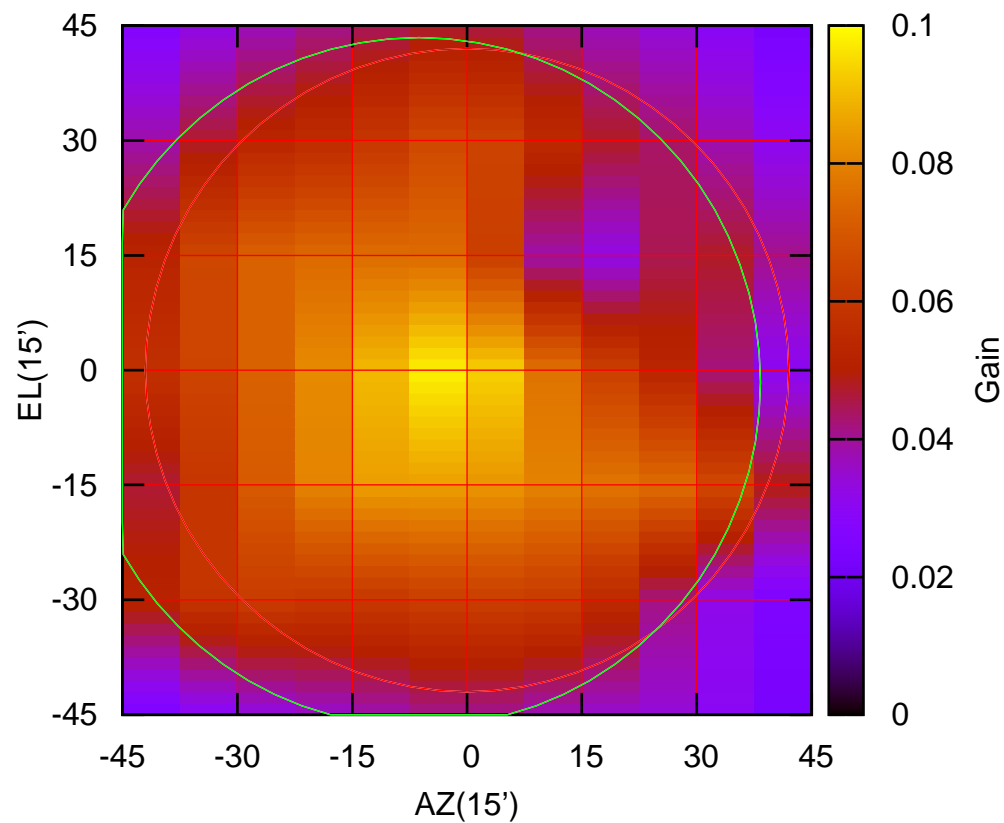
325 MHz.



E03-130 ELOFF= 0.4' ELBEAM= 87.3'

E03-175 AZOFF= -6.3' AZBEAM= 89.2'

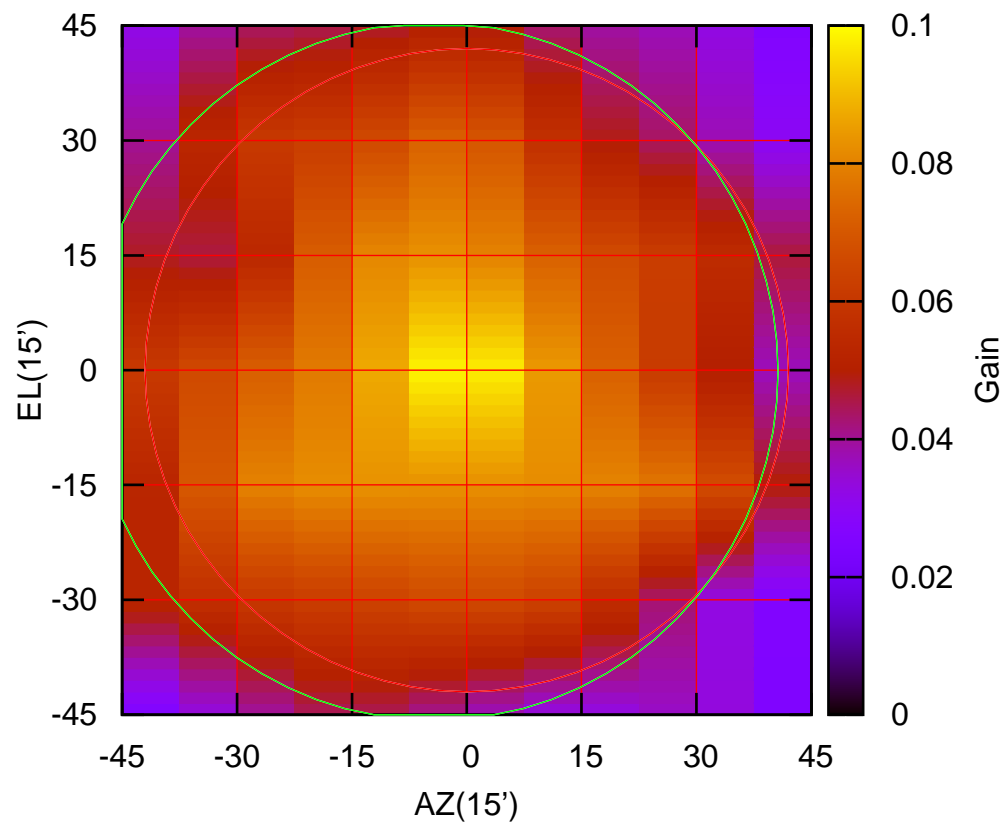
325 MHz.



E03-175 ELOFF= -1.6' ELBEAM= 90.0'

E04-130 AZOFF= -4.3' AZBEAM= 89.9'

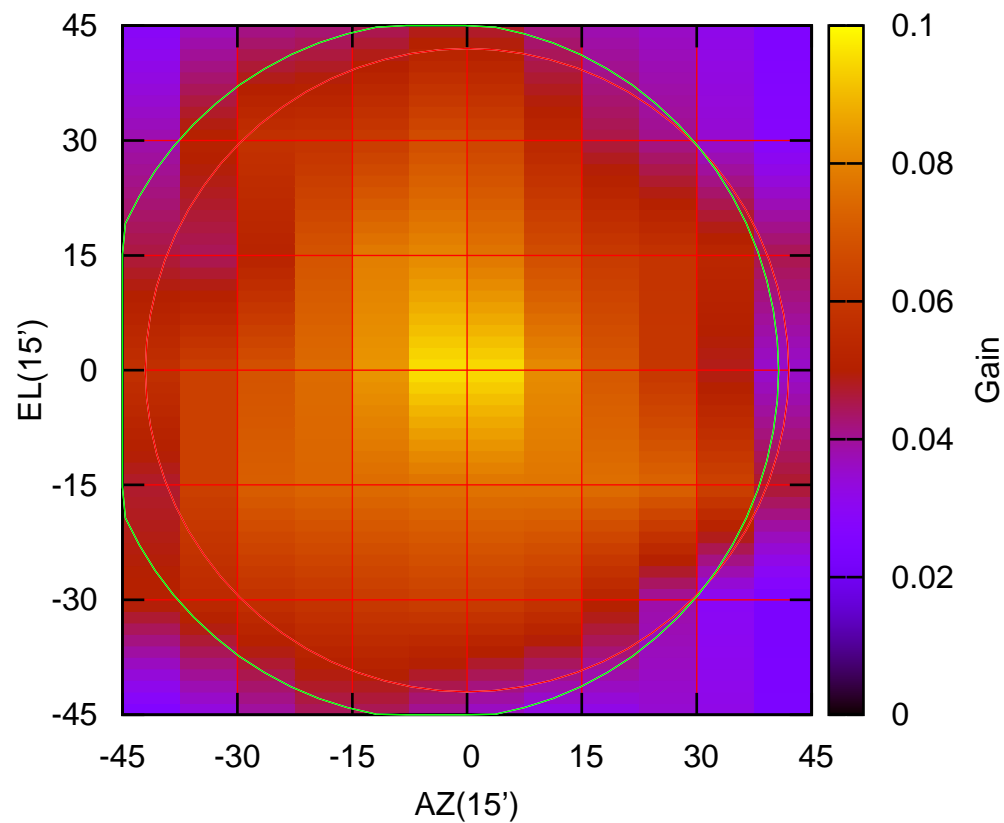
325 MHz.



E04-130 ELOFF= -0.2' ELBEAM= 91.2'

E04-175 AZOFF= -4.1' AZBEAM= 89.5'

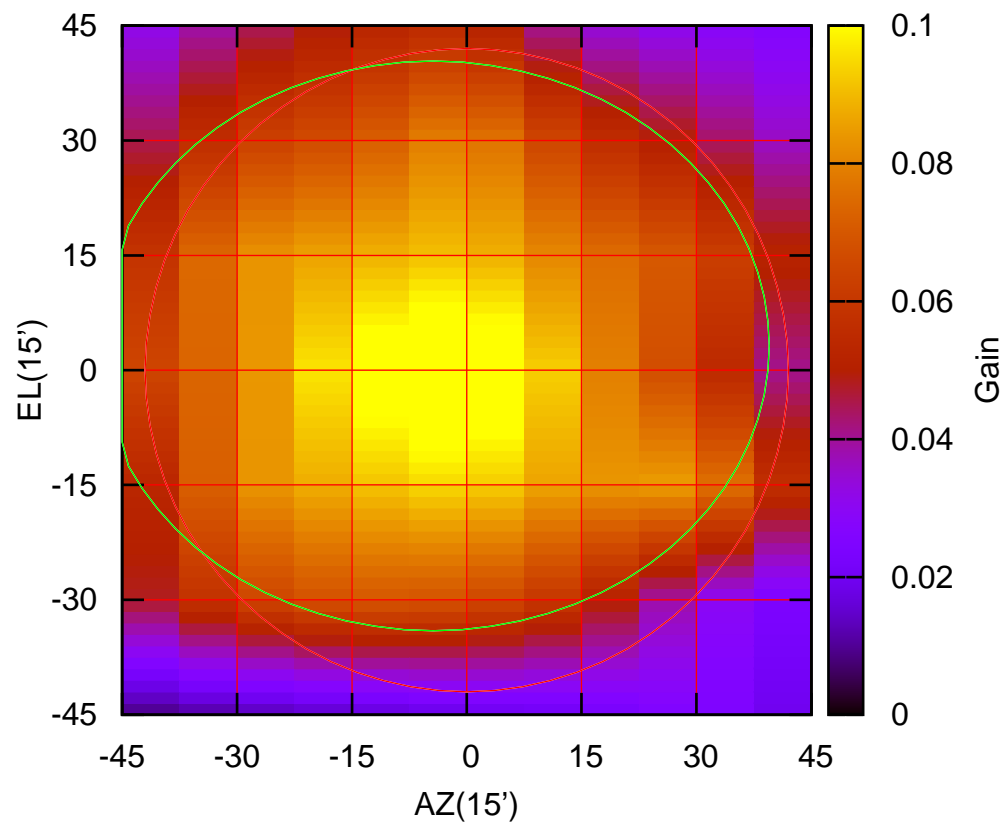
325 MHz.



E04-175 ELOFF= -0.1' ELBEAM= 91.1'

E05-130 AZOFF= -4.4' AZBEAM= 87.8'

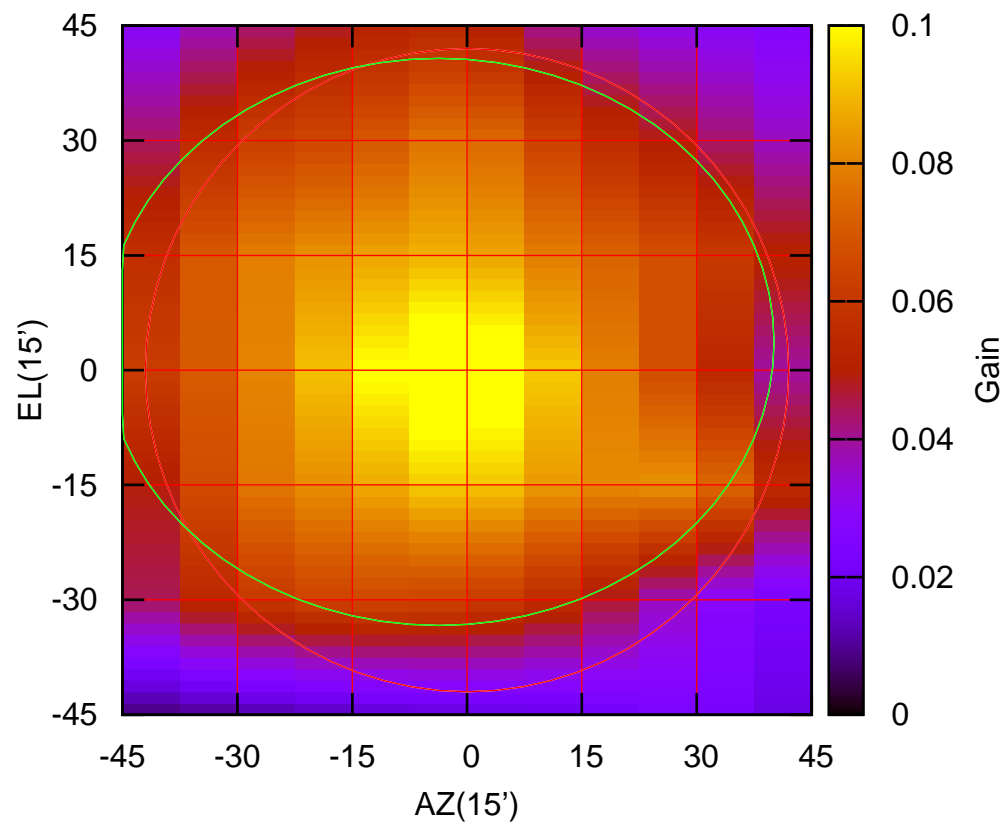
325 MHz.



E05-130 ELOFF= 3.2' ELBEAM= 74.4'

E05-175 AZOFF= -3.7' AZBEAM= 87.6'

325 MHz.

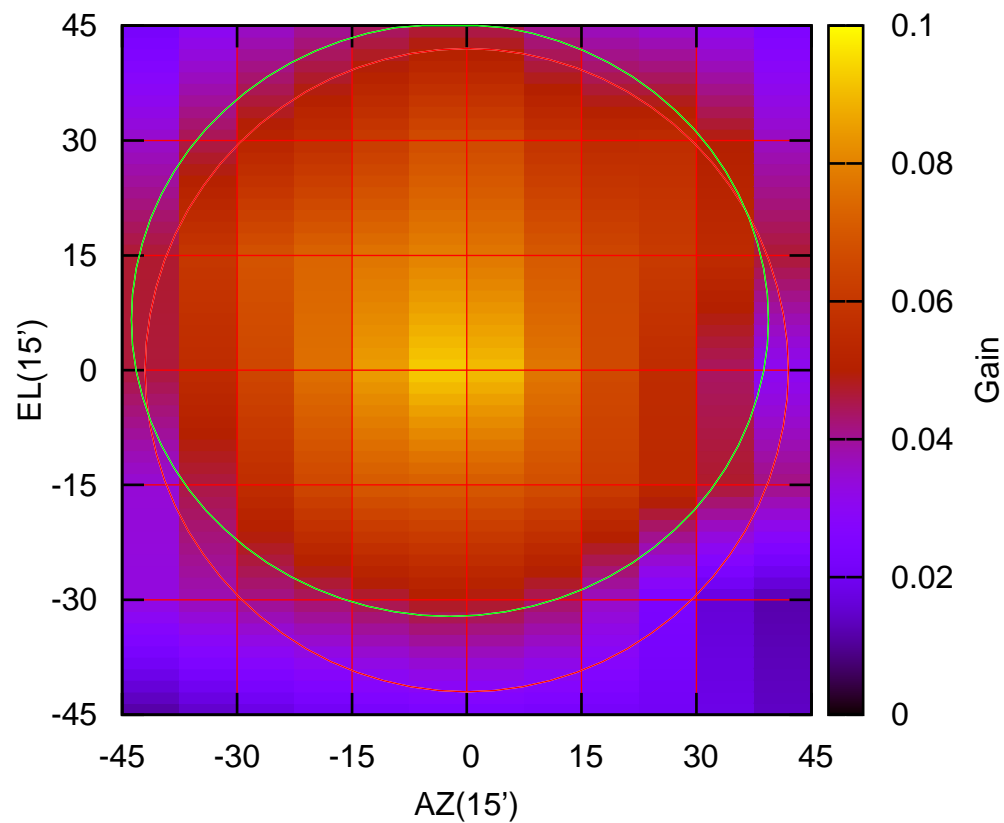


E05-175 ELOFF= 3.7' ELBEAM= 74.1'



E06-130 AZOFF= -2.2' AZBEAM= 83.2'

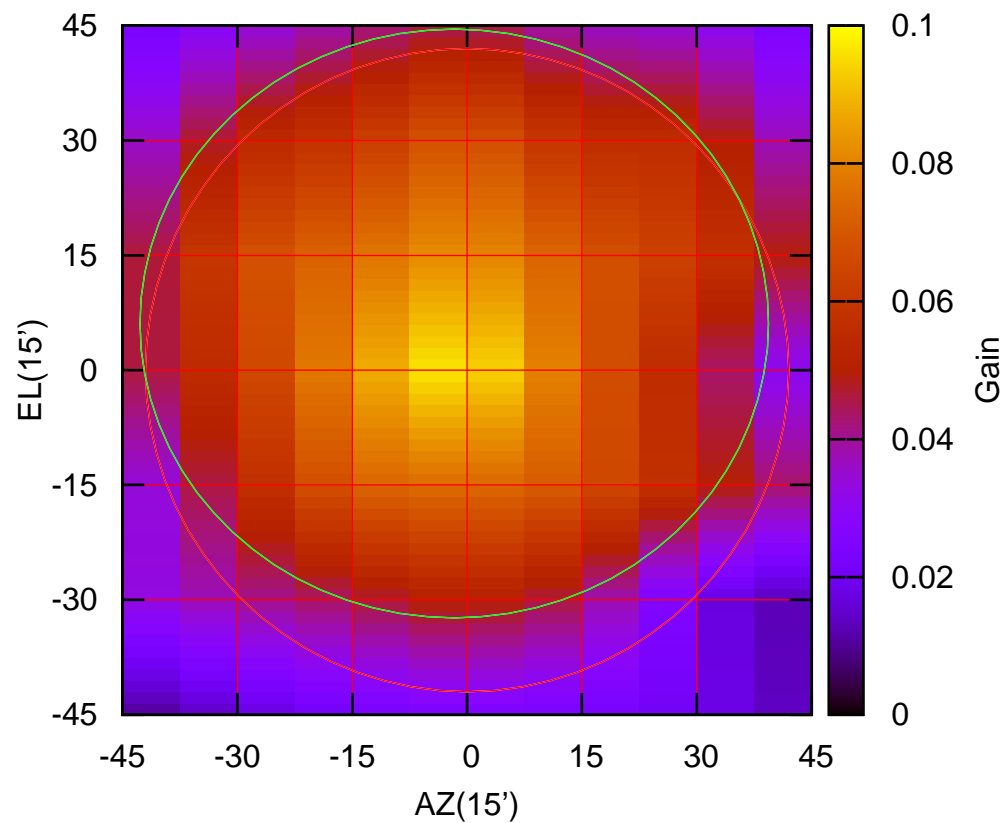
325 MHz.



E06-130 ELOFF= 6.6' ELBEAM= 77.5'

E06-175 AZOFF= -1.7' AZBEAM= 82.1'

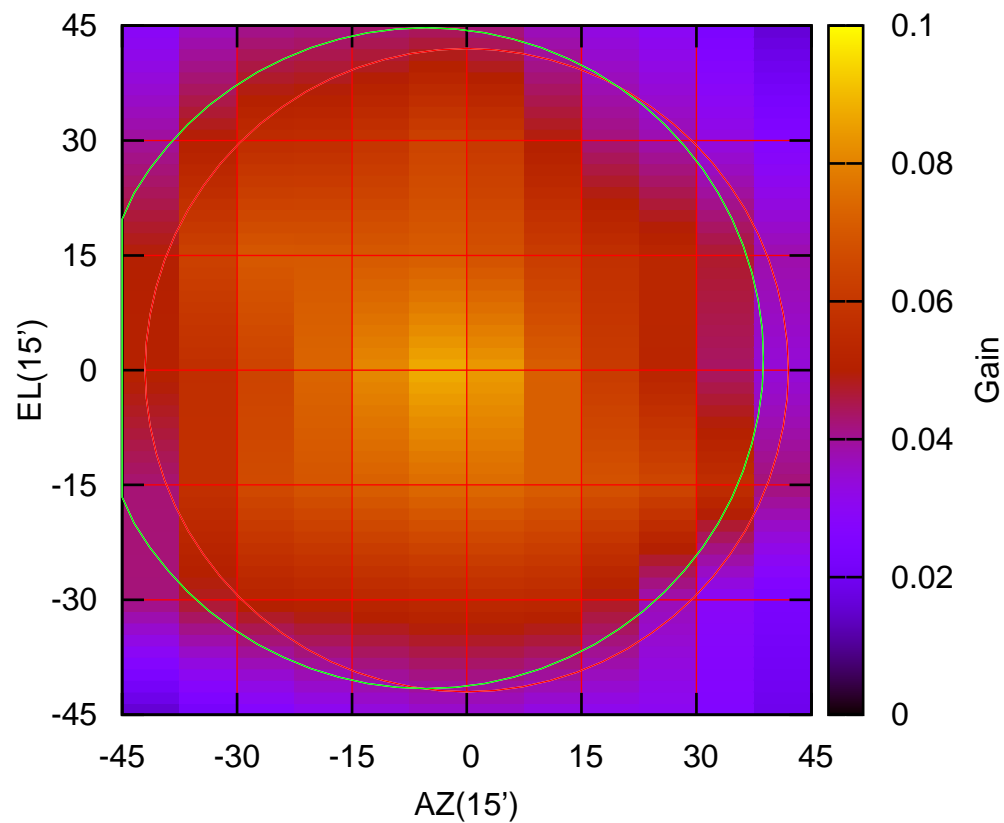
325 MHz.



E06-175 ELOFF= 6.1' ELBEAM= 76.9'

S01-130 AZOFF= -5.3' AZBEAM= 88.1'

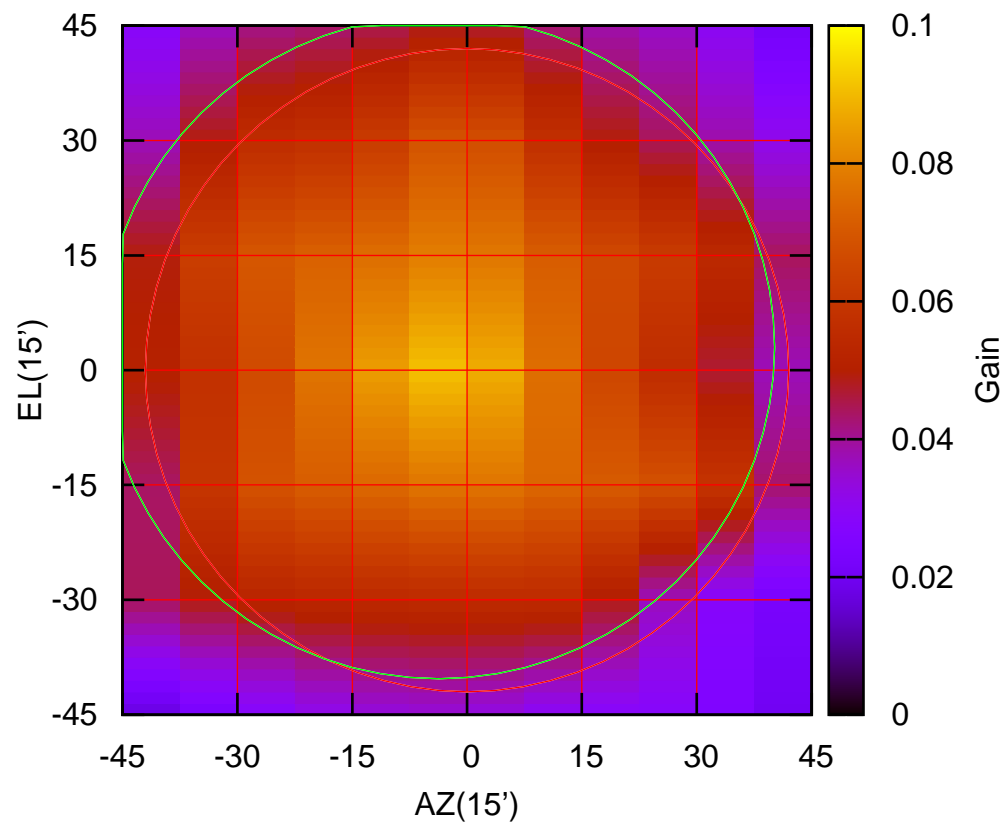
325 MHz.



S01-130 ELOFF= 1.6' ELBEAM= 86.3'

S01-175 AZOFF= -3.7' AZBEAM= 87.7'

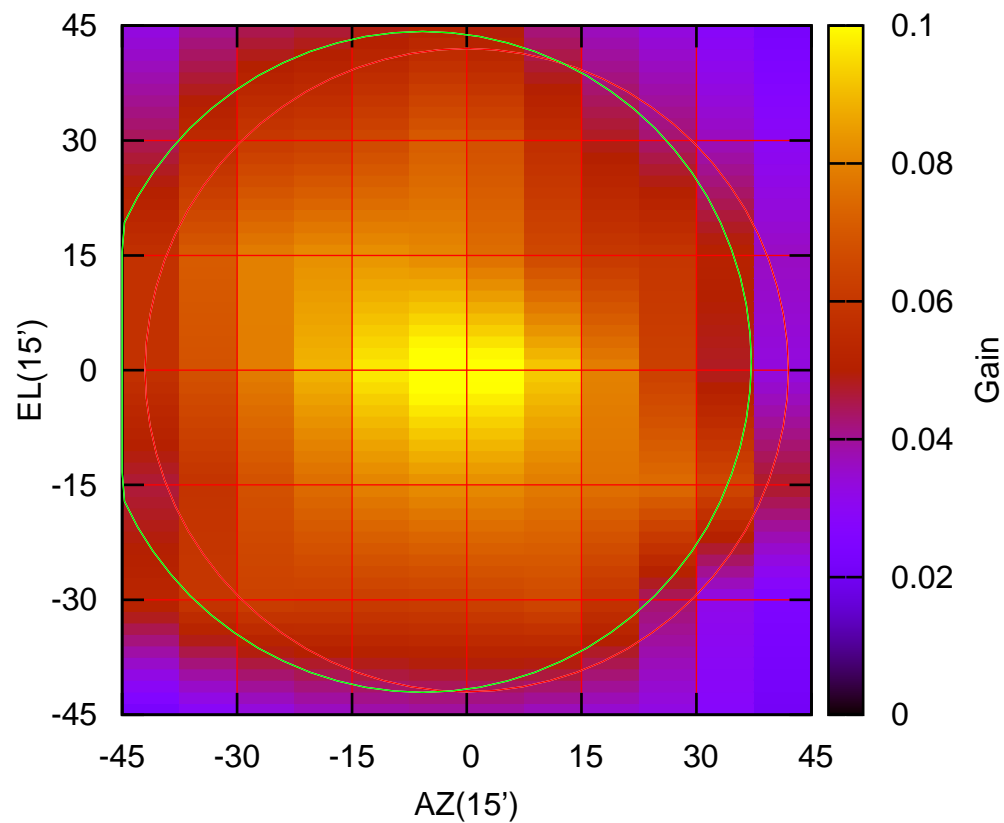
325 MHz.



S01-175 ELOFF= 3.0' ELBEAM= 86.6'

S02-130 AZOFF= -5.8' AZBEAM= 85.9'

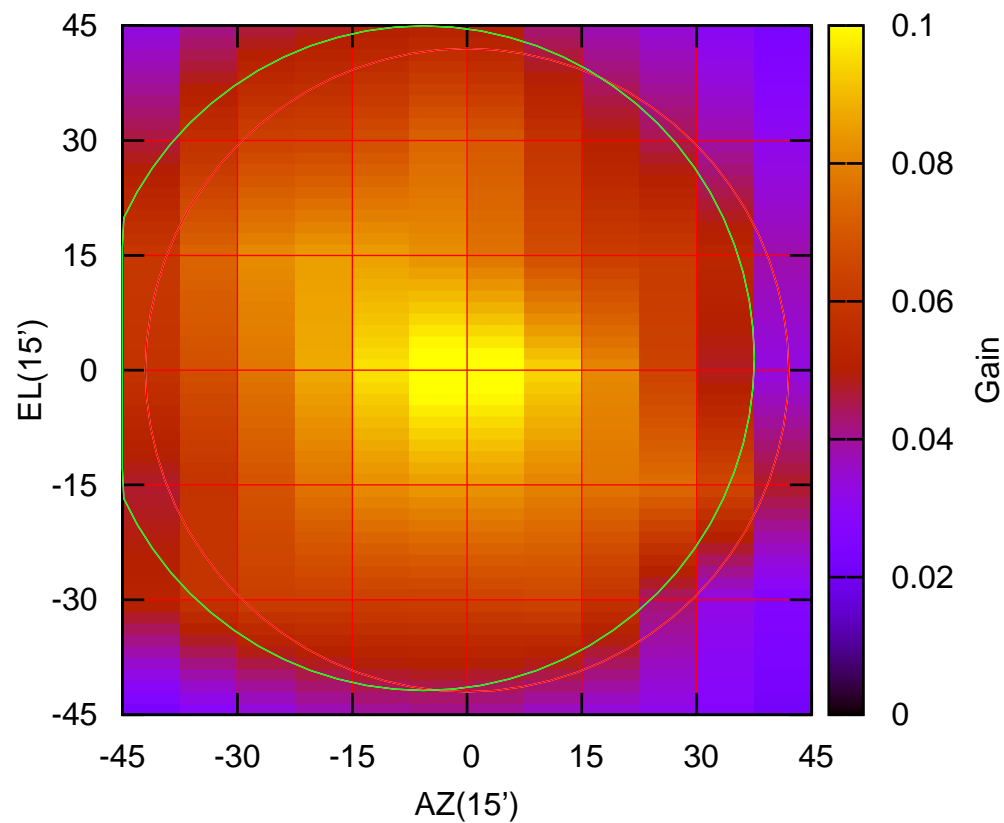
325 MHz.



S02-130 ELOFF= 1.1' ELBEAM= 86.3'

S02-175 AZOFF= -5.7' AZBEAM= 86.4'

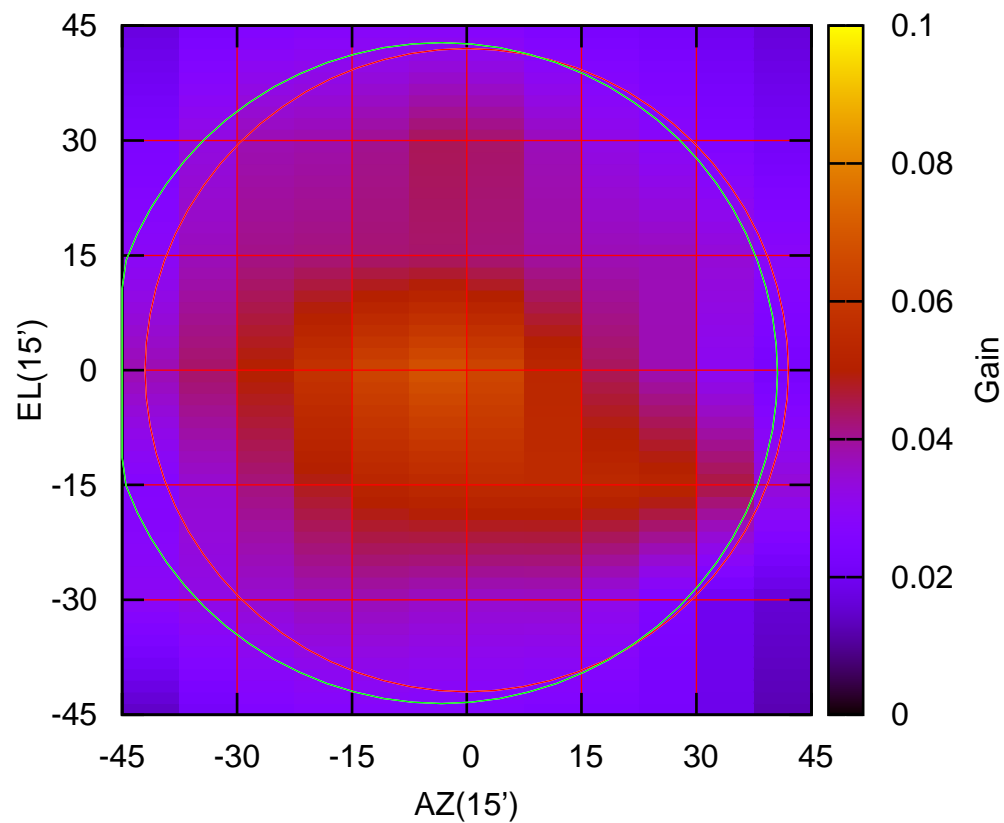
325 MHz.



S02-175 ELOFF= 1.6' ELBEAM= 86.8'

S03-130 AZOFF= -3.3' AZBEAM= 87.7'

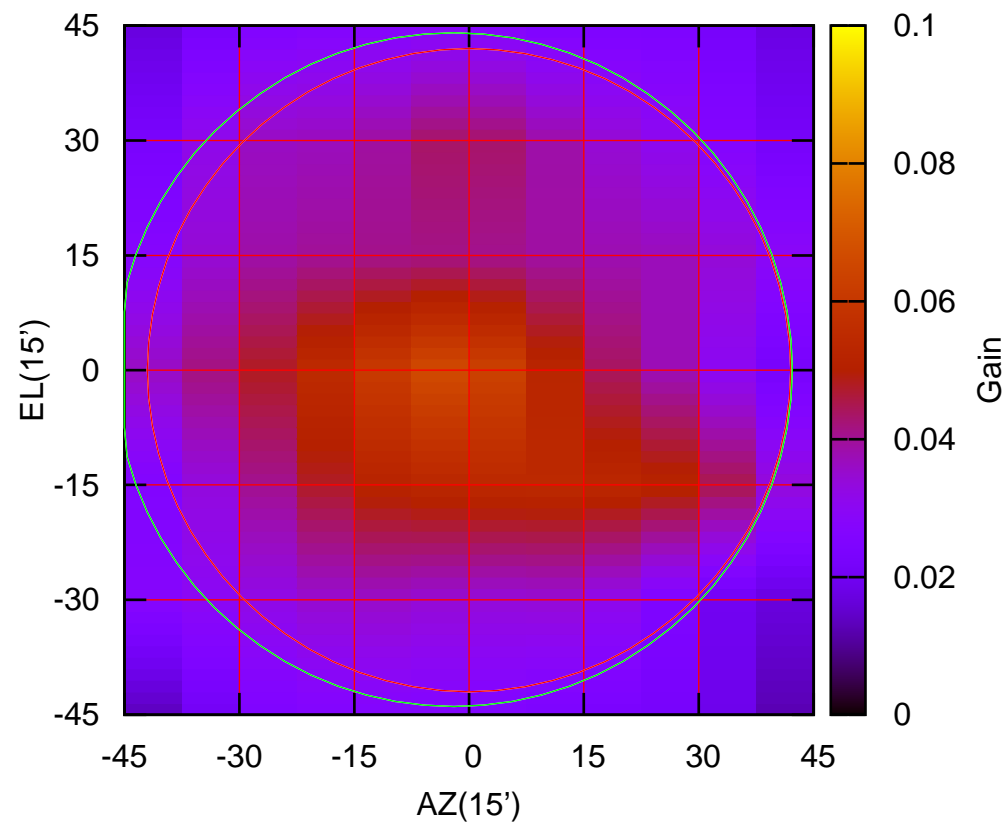
325 MHz.



S03-130 ELOFF= -0.4' ELBEAM= 86.3'

S03-175 AZOFF= -2.0' AZBEAM= 88.4'

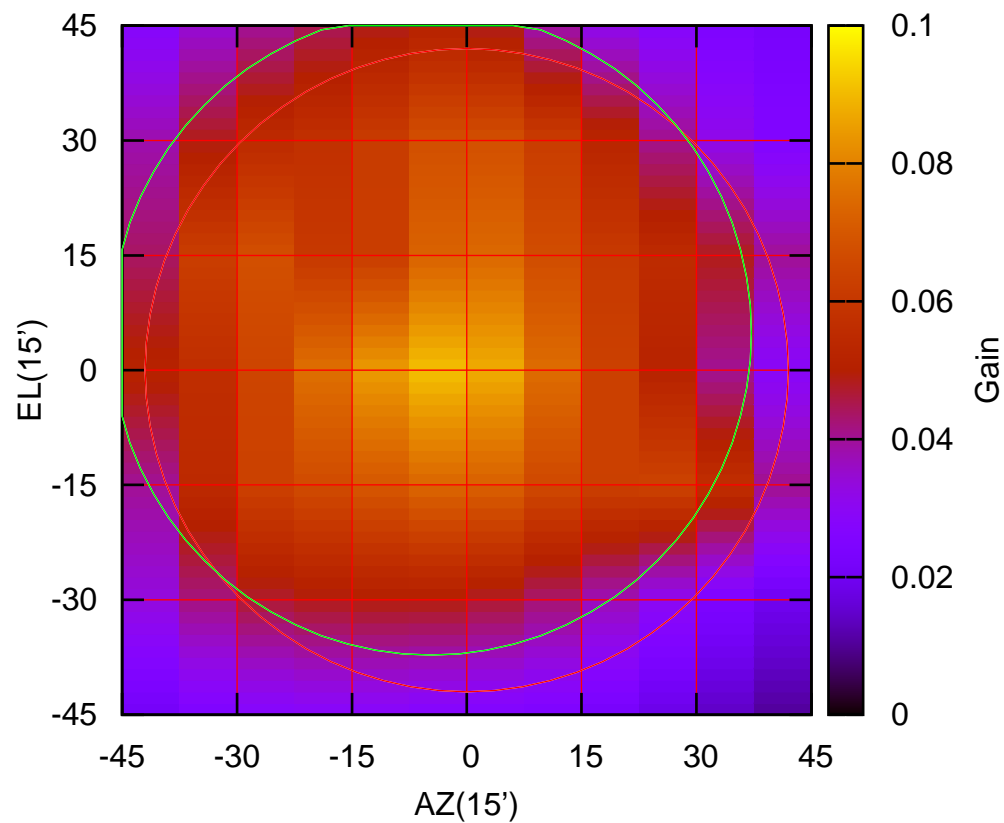
325 MHz.



S03-175 ELOFF= 0.1' ELBEAM= 88.0'

S04-130 AZOFF= -4.7' AZBEAM= 83.7'

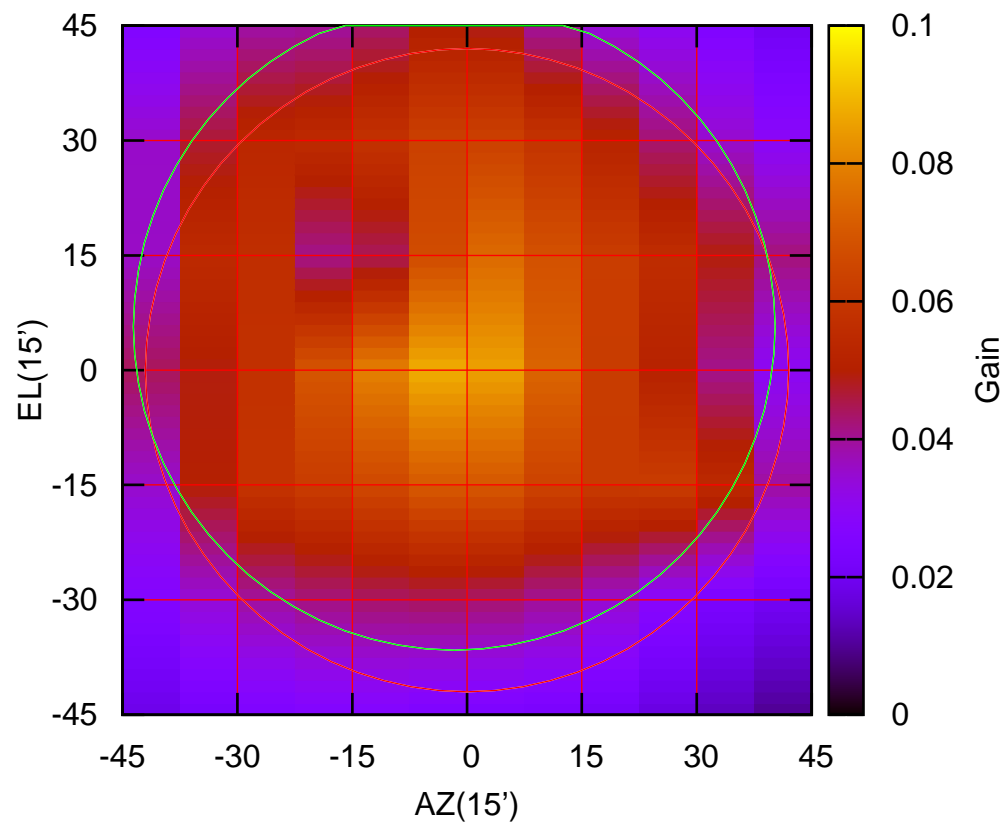
325 MHz.



S04-130 ELOFF= 4.9' ELBEAM= 84.2'

S04-175 AZOFF= -1.7' AZBEAM= 83.8'

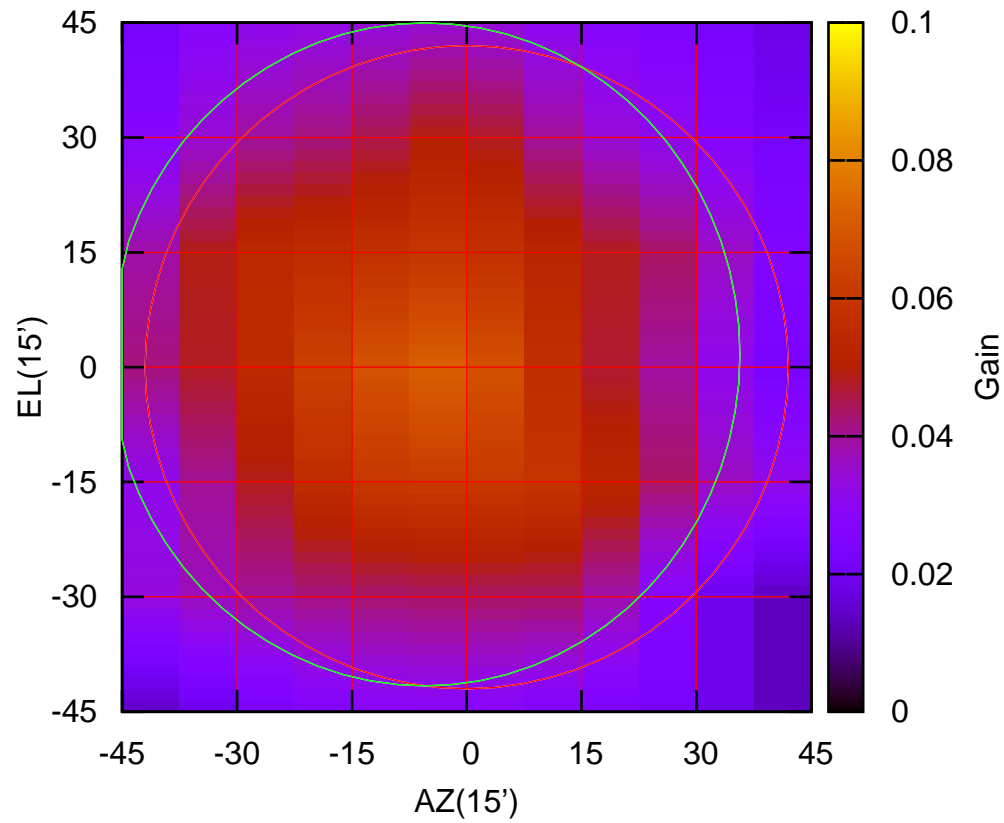
325 MHz.



S04-175 ELOFF= 5.7' ELBEAM= 84.5'

S06-130 AZOFF= -5.5' AZBEAM= 82.3'

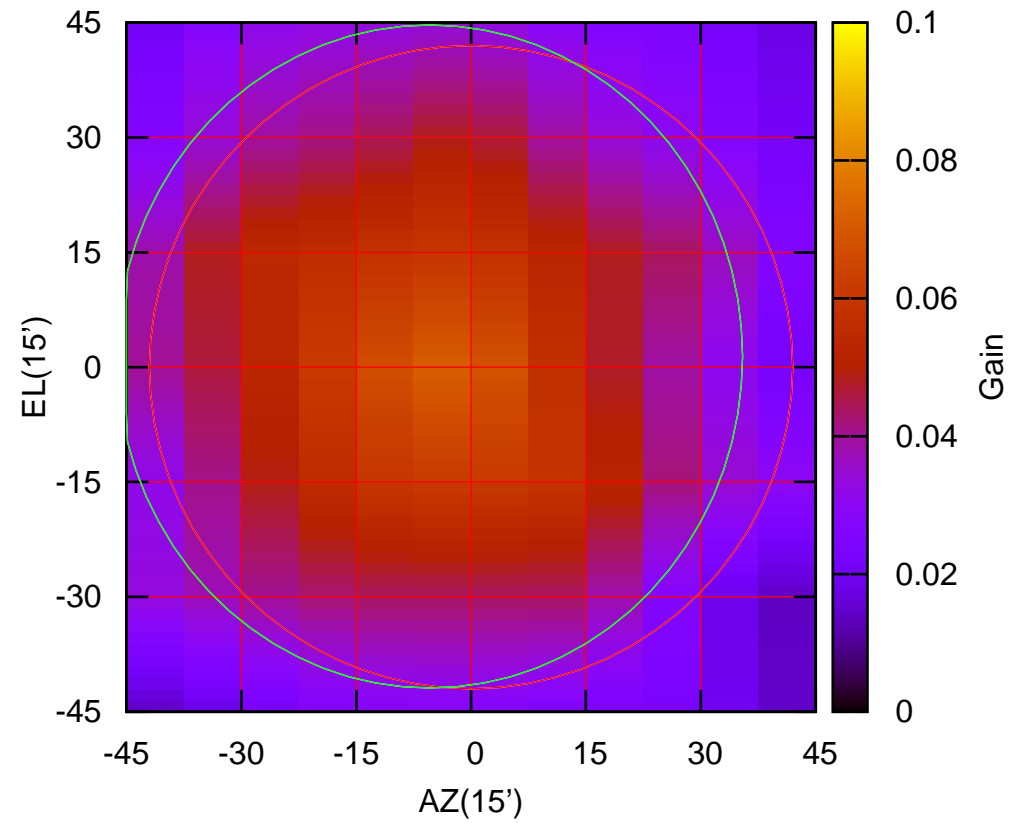
325 MHz.



S06-130 ELOFF= 1.7' ELBEAM= 86.6'

S06-175 AZOFF= -5.4' AZBEAM= 81.7'

325 MHz.



S06-175 ELOFF= 1.4' ELBEAM= 86.6'