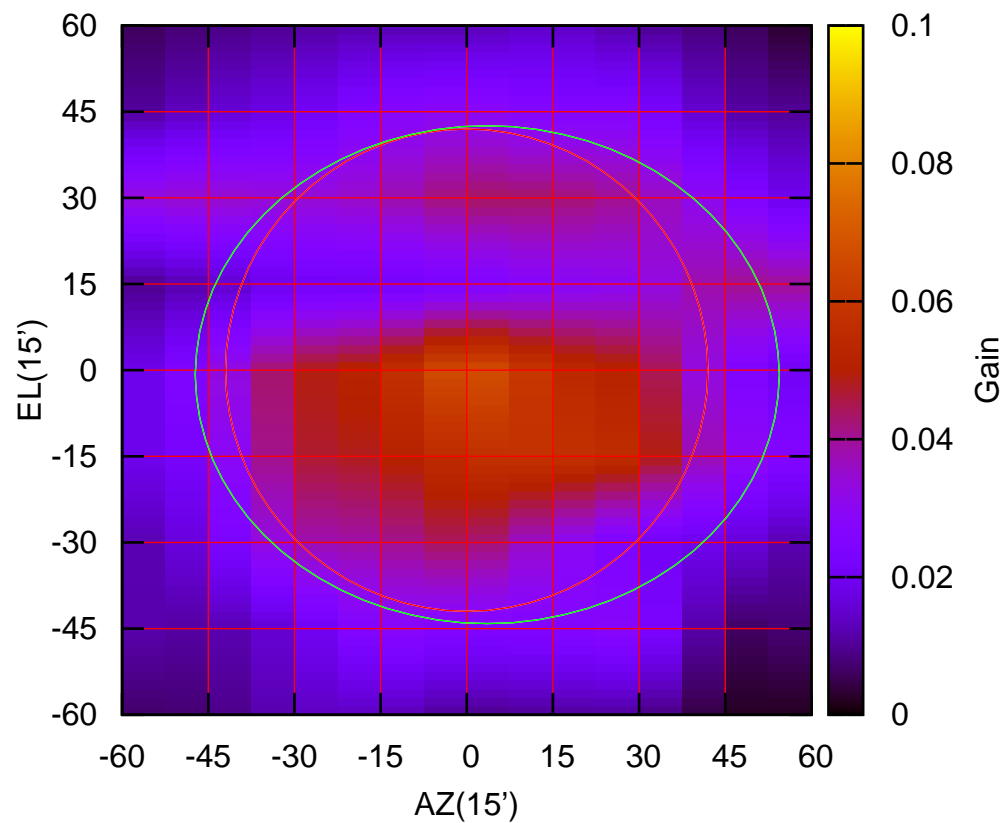


C00-130 AZOFF= 3.6' AZBEAM=101.7'

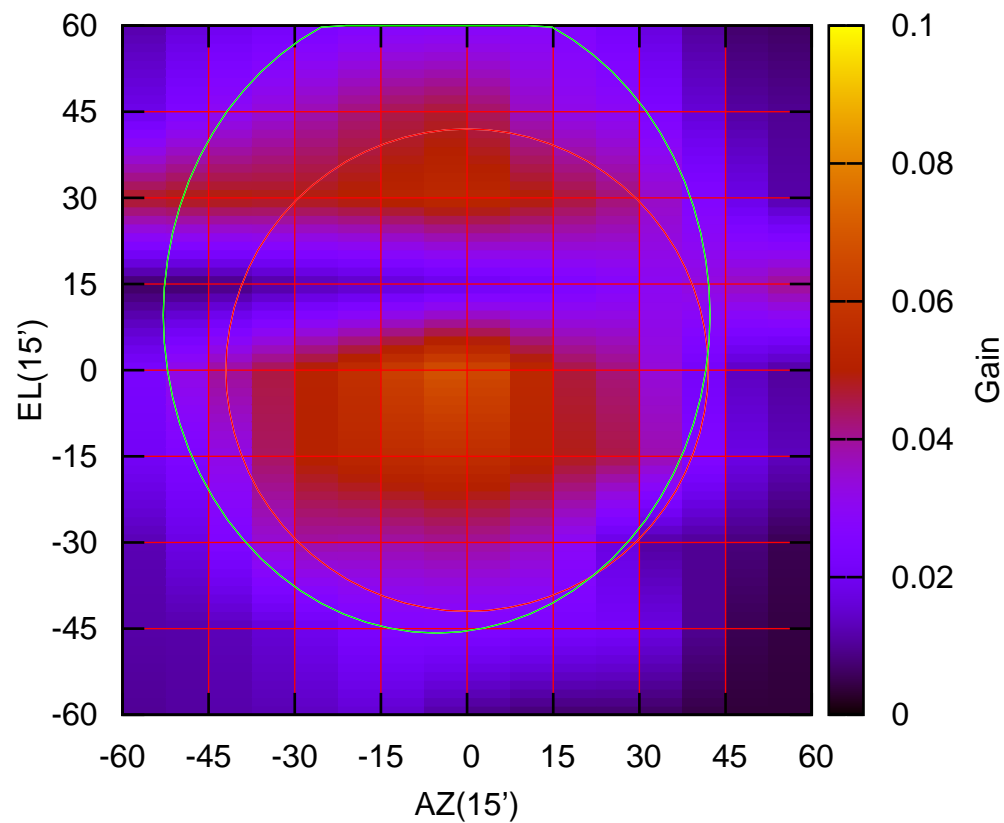
325 MHz.



C00-130 ELOFF= -0.8' ELBEAM= 86.7'

C00-175 AZOFF= -5.3' AZBEAM= 95.2'

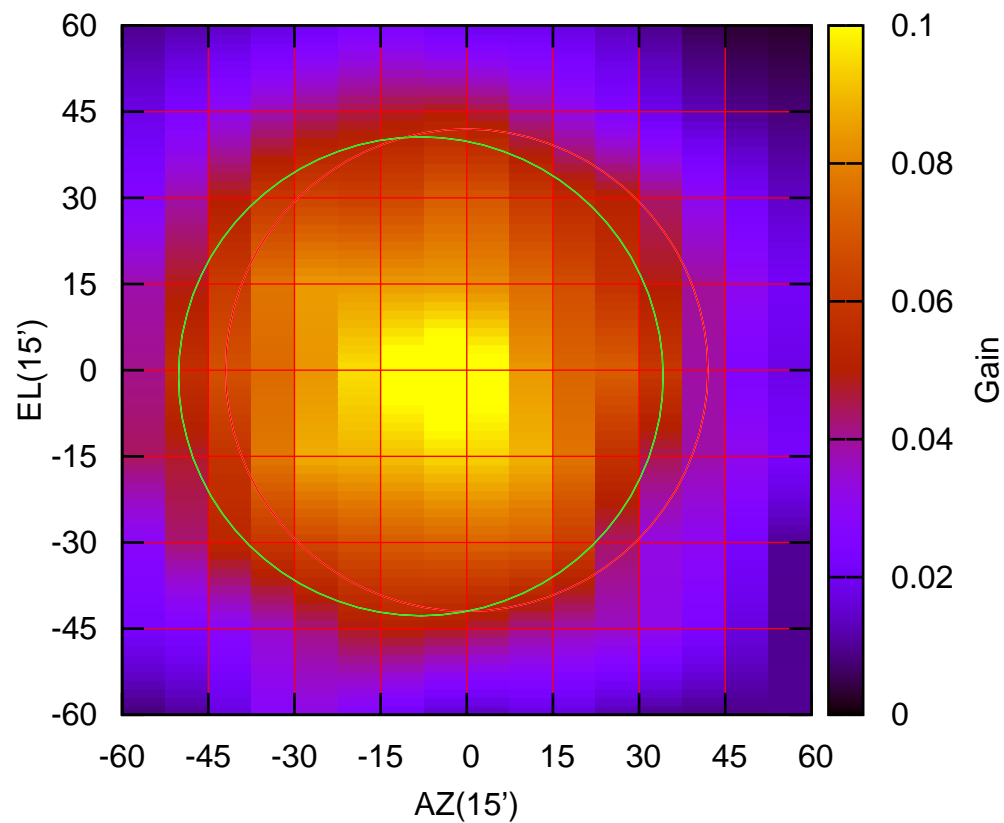
325 MHz.



C00-175 ELOFF= 9.6' ELBEAM=110.7'

C01-130 AZOFF= -8.0' AZBEAM= 84.4'

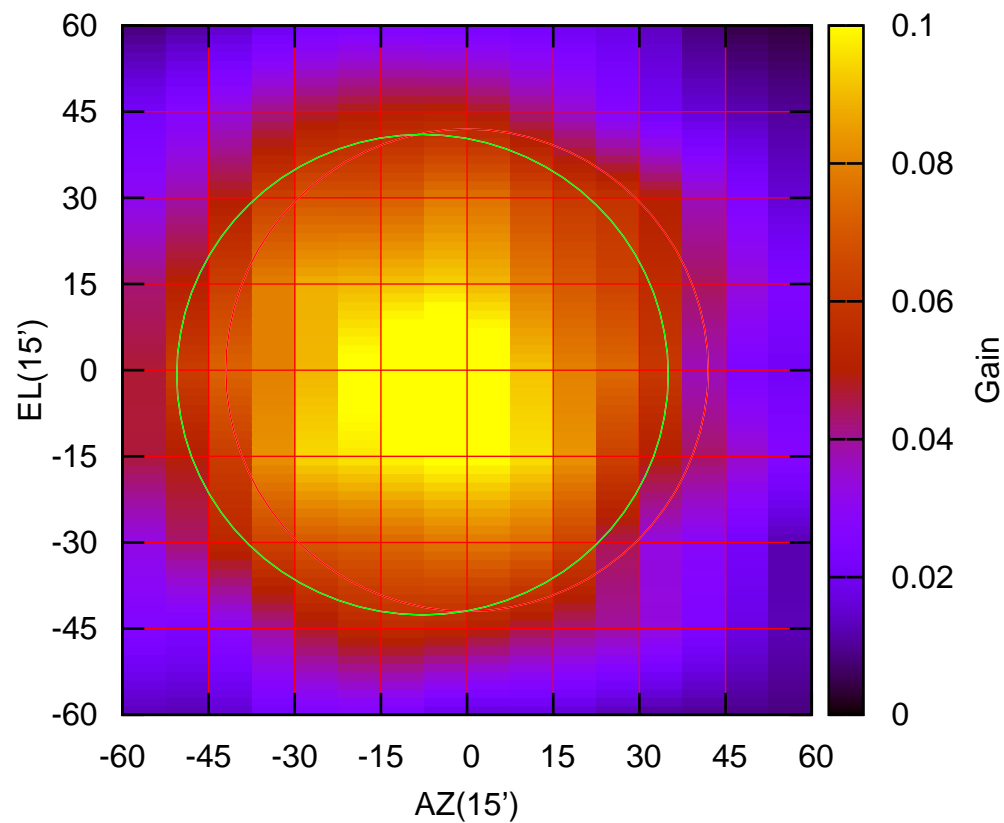
325 MHz.



C01-130 ELOFF= -1.1' ELBEAM= 83.4'

C01-175 AZOFF= -7.8' AZBEAM= 85.6'

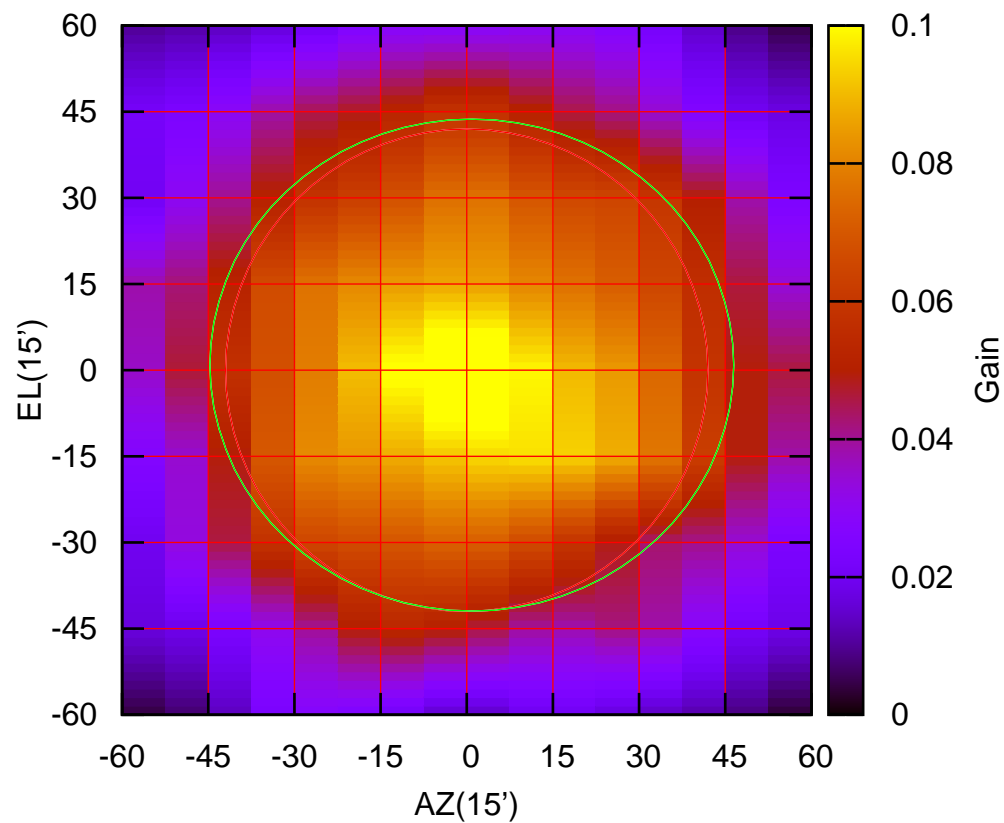
325 MHz.



C01-175 ELOFF= -0.8' ELBEAM= 83.7'

C02-130 AZOFF= 0.9' AZBEAM= 91.2'

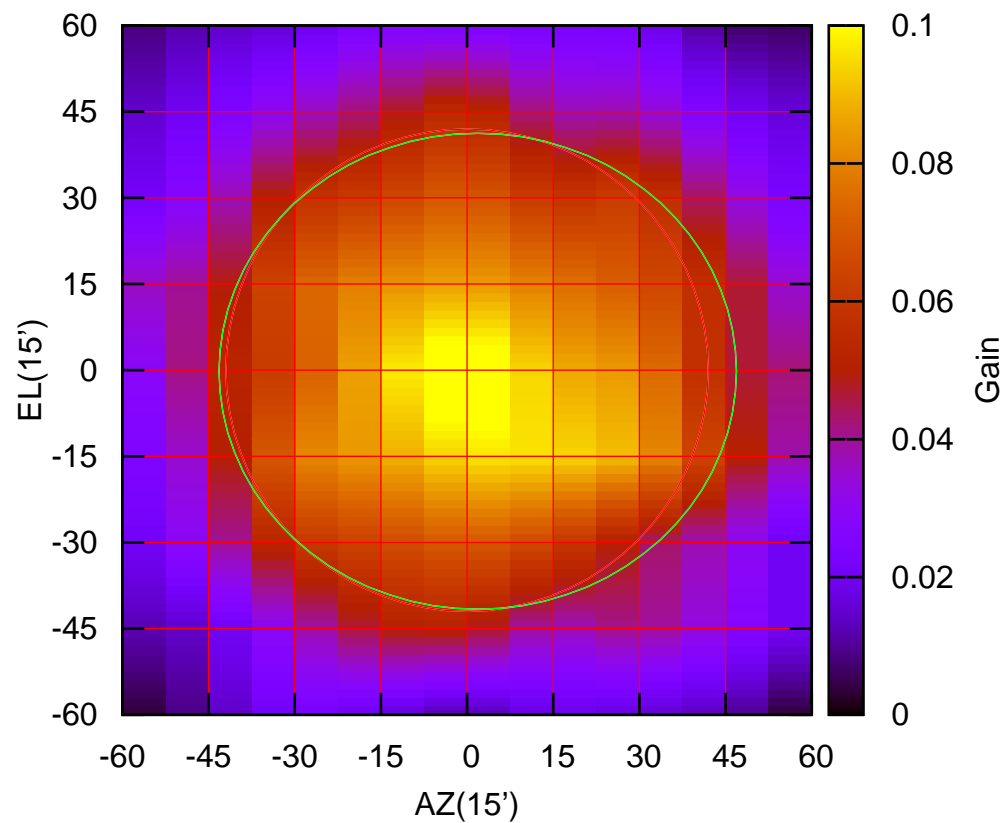
325 MHz.



C02-130 ELOFF= 0.9' ELBEAM= 85.7'

C02-175 AZOFF= 1.9' AZBEAM= 90.1'

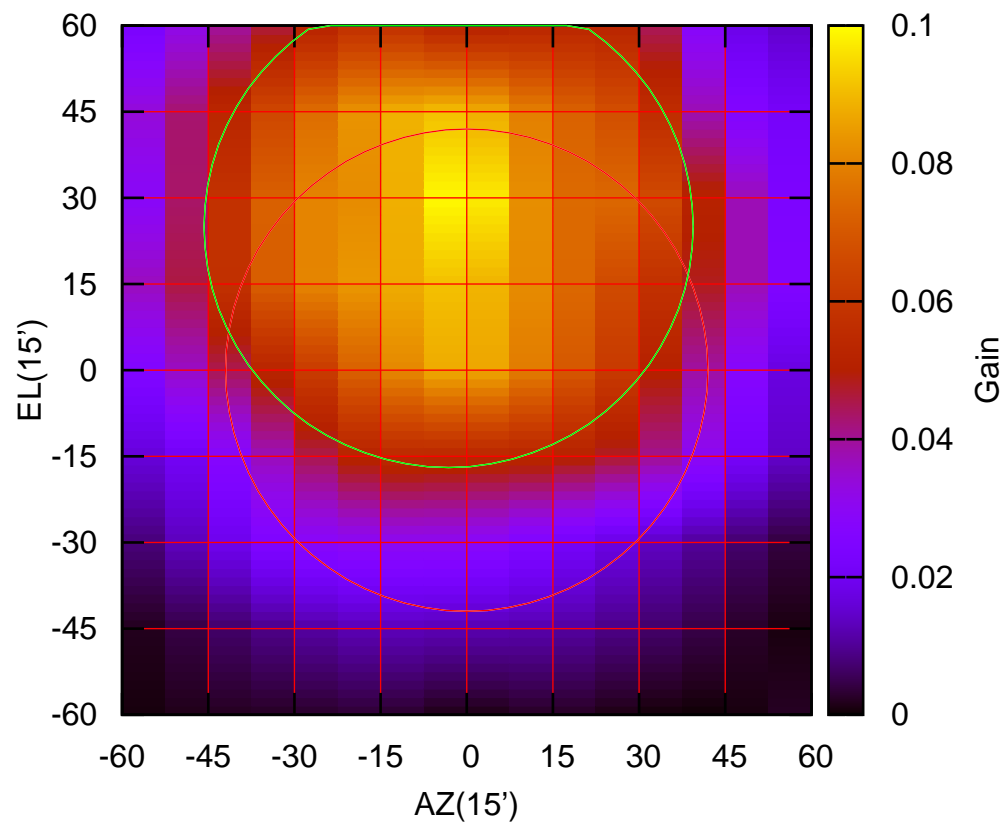
325 MHz.



C02-175 ELOFF= -0.2' ELBEAM= 82.9'

C03-130 AZOFF= -3.2' AZBEAM= 85.2'

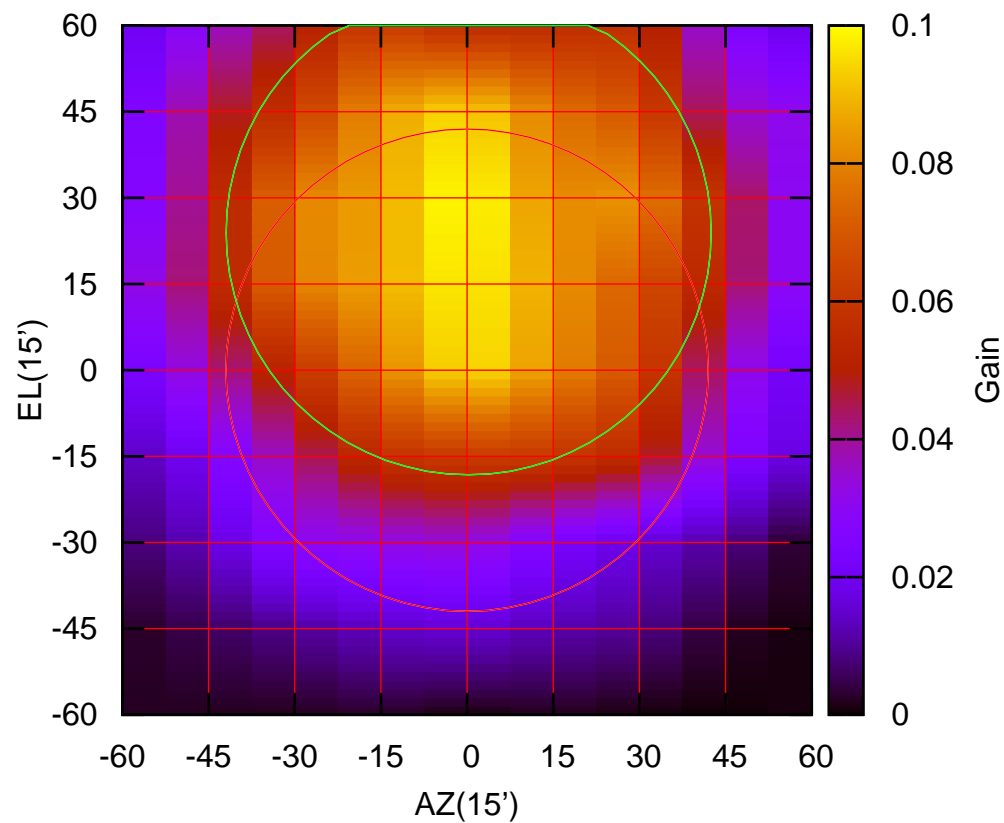
325 MHz.



C03-130 ELOFF= 25.0' ELBEAM= 83.9'

C03-175 AZOFF= 0.3' AZBEAM= 84.5'

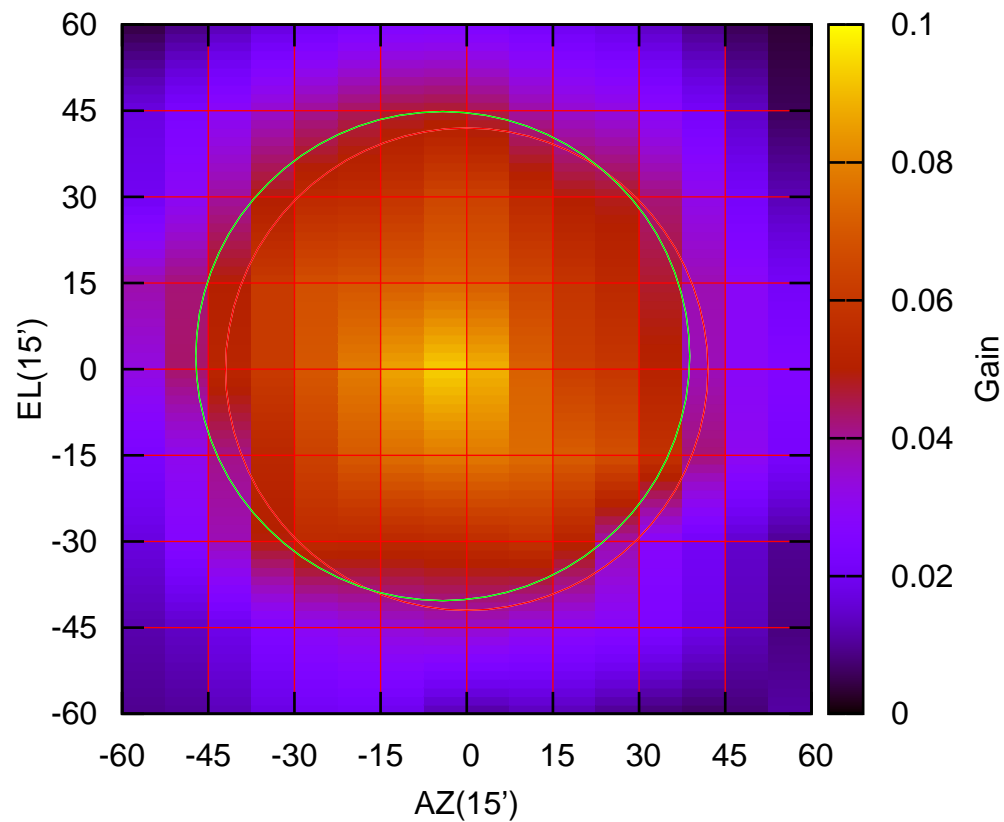
325 MHz.



C03-175 ELOFF= 24.0' ELBEAM= 84.4'

C04-130 AZOFF= -4.2' AZBEAM= 86.0'

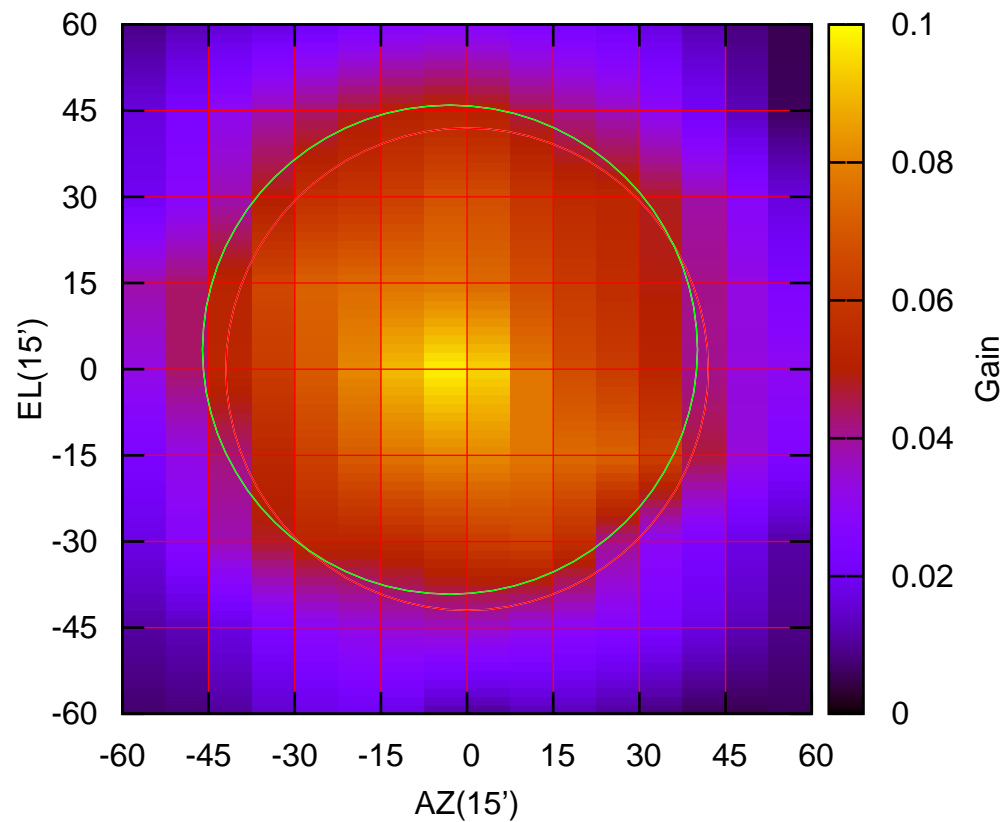
325 MHz.



C04-130 ELOFF= 2.3' ELBEAM= 85.2'

C04-175 AZOFF= -3.0' AZBEAM= 86.2'

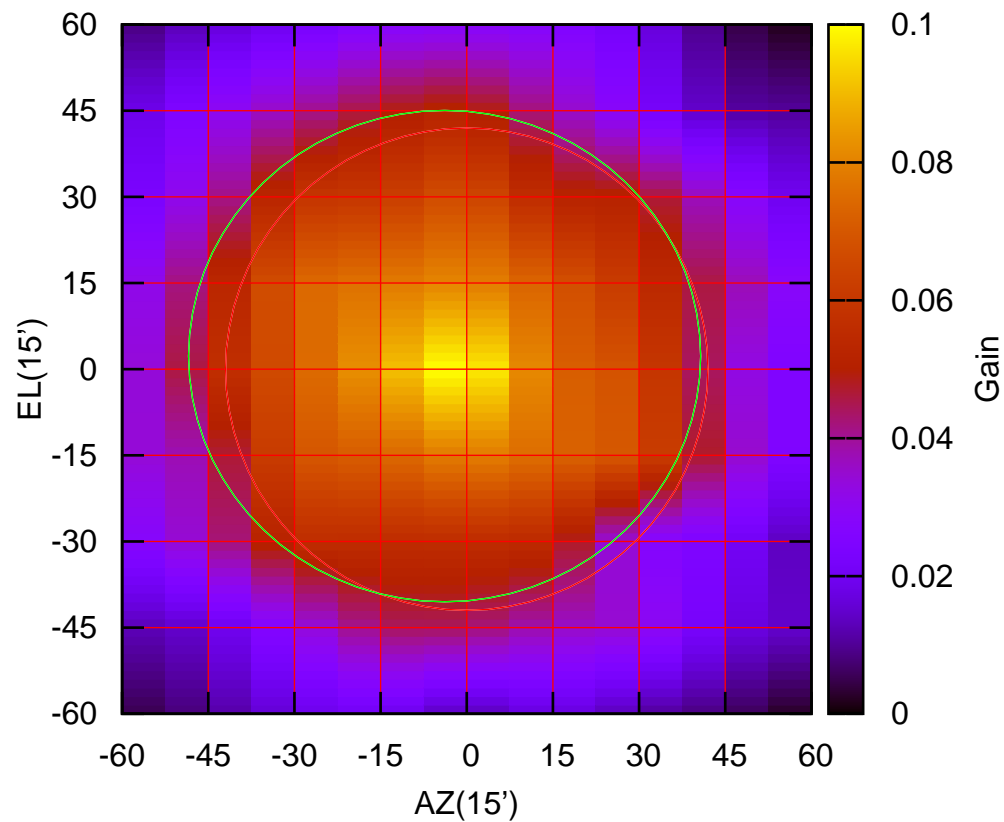
325 MHz.



C04-175 ELOFF= 3.4' ELBEAM= 85.2'

C05-130 AZOFF= -3.9' AZBEAM= 89.2'

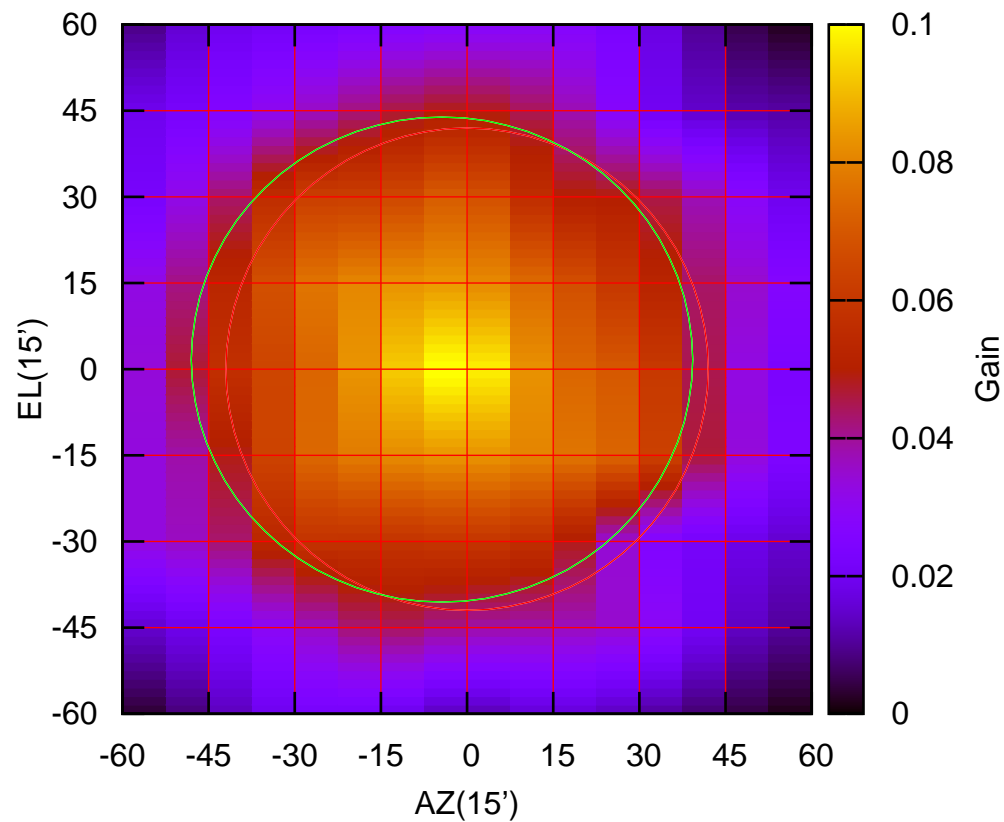
325 MHz.



C05-130 ELOFF= 2.3' ELBEAM= 85.6'

C05-175 AZOFF= -4.4' AZBEAM= 87.3'

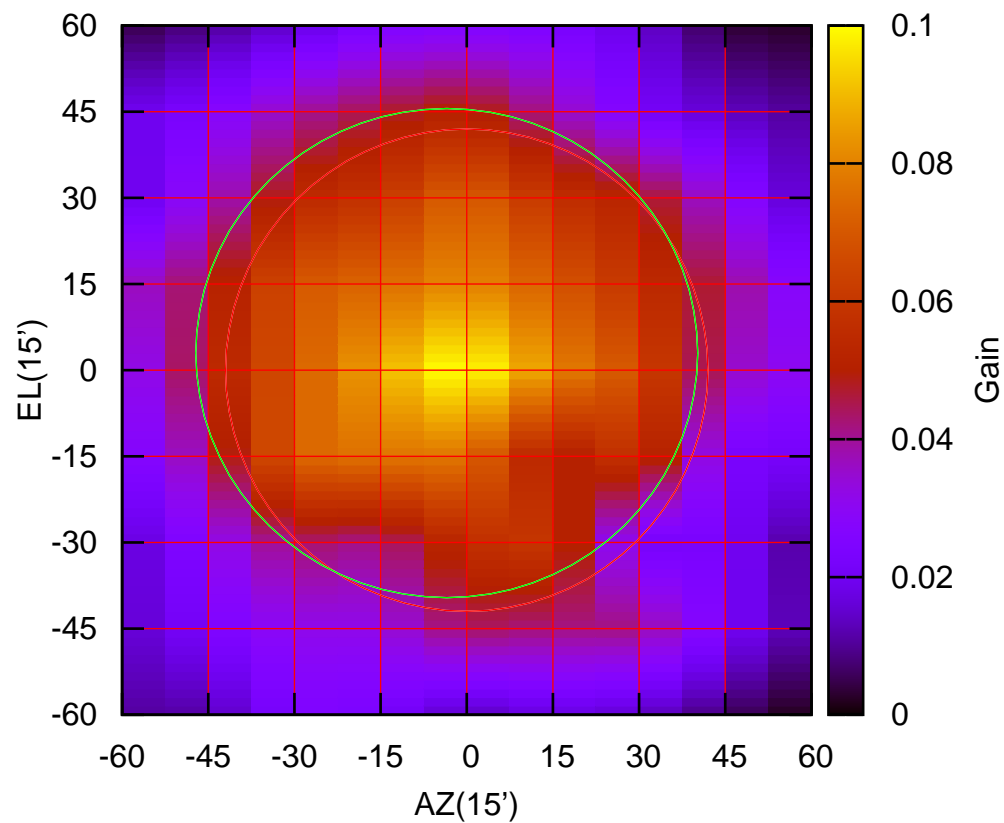
325 MHz.



C05-175 ELOFF= 1.7' ELBEAM= 84.5'

C06-130 AZOFF= -3.5' AZBEAM= 87.4'

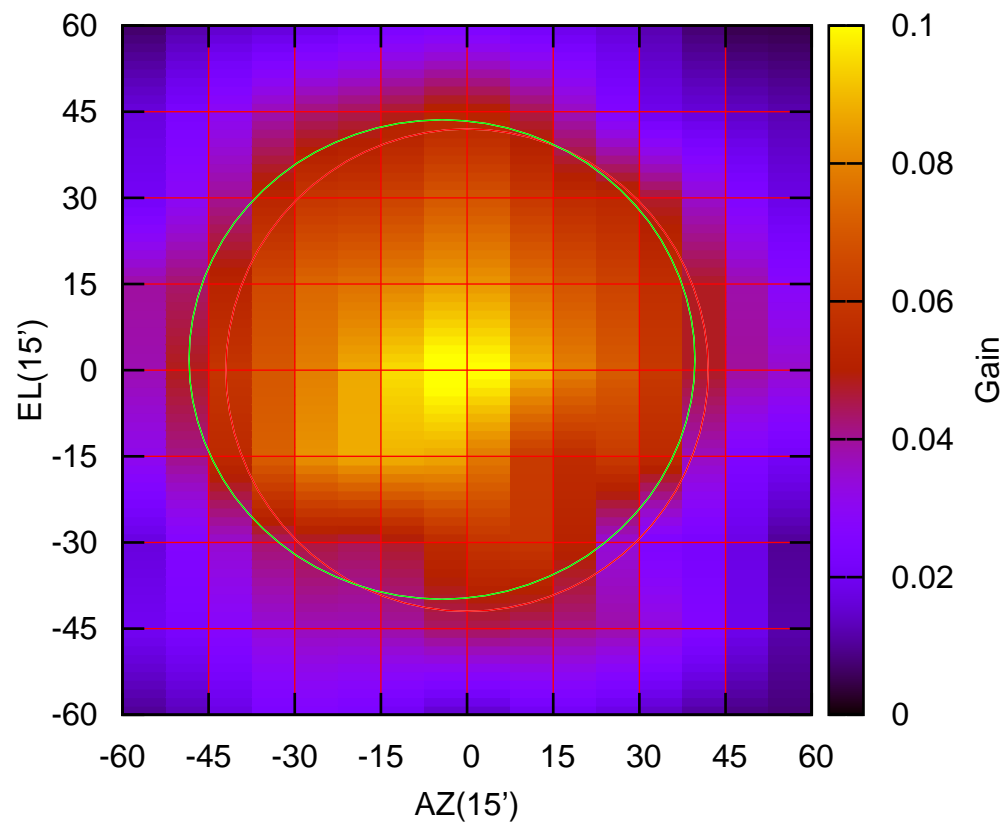
325 MHz.



C06-130 ELOFF= 3.0' ELBEAM= 85.2'

C06-175 AZOFF= -4.4' AZBEAM= 88.1'

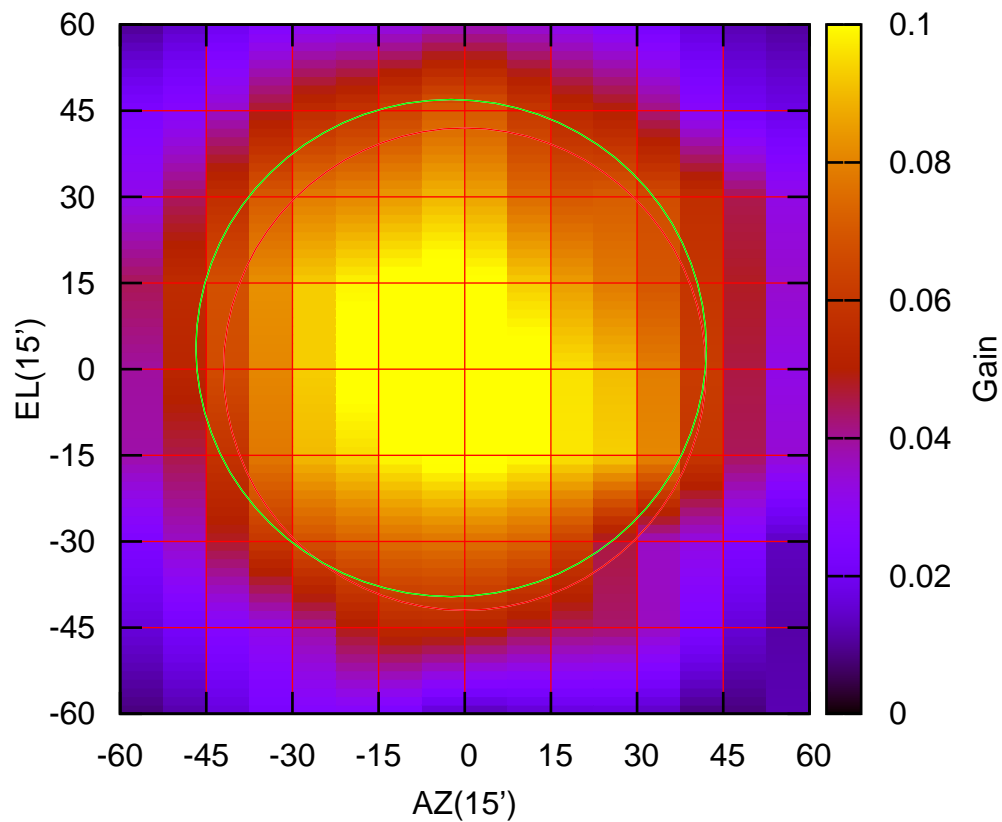
325 MHz.



C06-175 ELOFF= 1.9' ELBEAM= 83.5'

C08-130 AZOFF= -2.4' AZBEAM= 88.9'

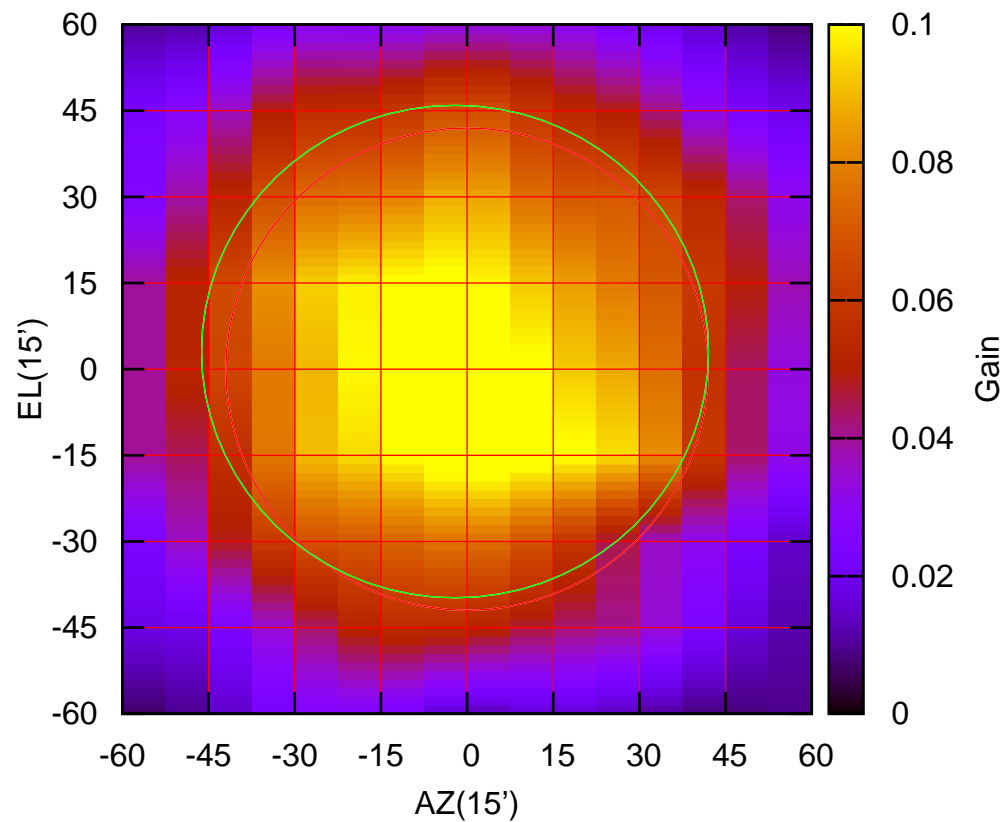
325 MHz.



C08-130 ELOFF= 3.7' ELBEAM= 86.6'

C08-175 AZOFF= -2.1' AZBEAM= 88.3'

325 MHz.

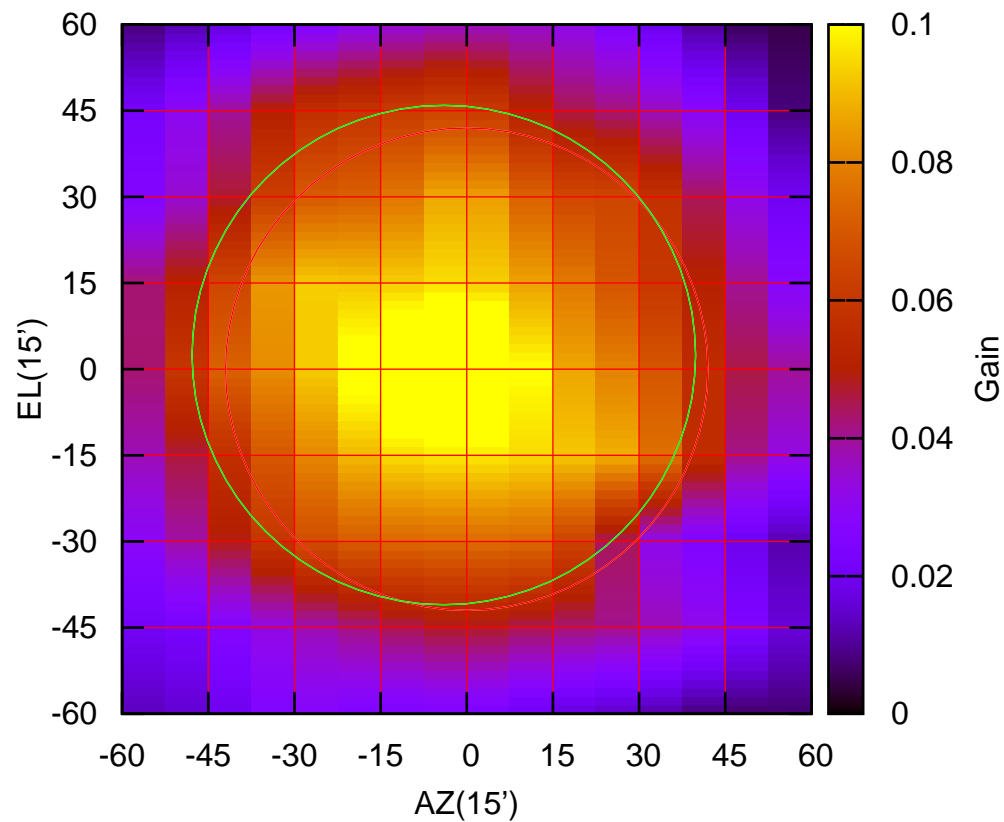


C08-175 ELOFF= 3.1' ELBEAM= 85.8'



C09-130 AZOFF= -4.0' AZBEAM= 87.7'

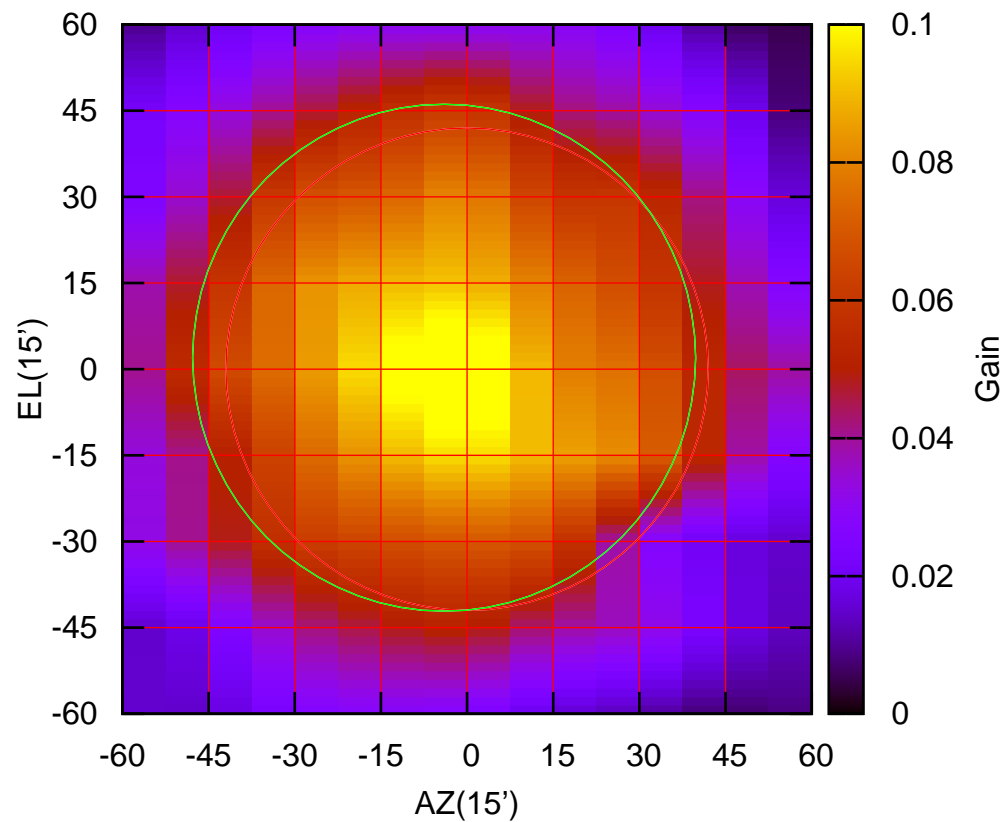
325 MHz.



C09-130 ELOFF= 2.5' ELBEAM= 87.0'

C09-175 AZOFF= -4.0' AZBEAM= 87.6'

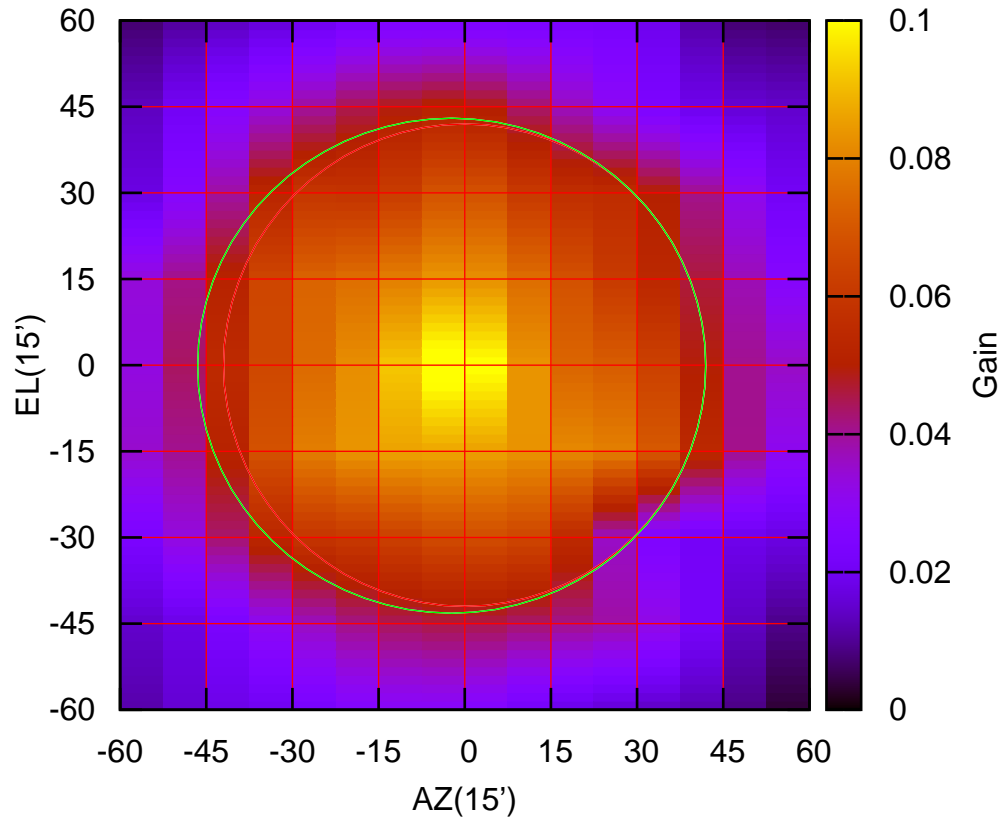
325 MHz.



C09-175 ELOFF= 2.0' ELBEAM= 88.3'

C10-130 AZOFF= -2.3' AZBEAM= 88.5'

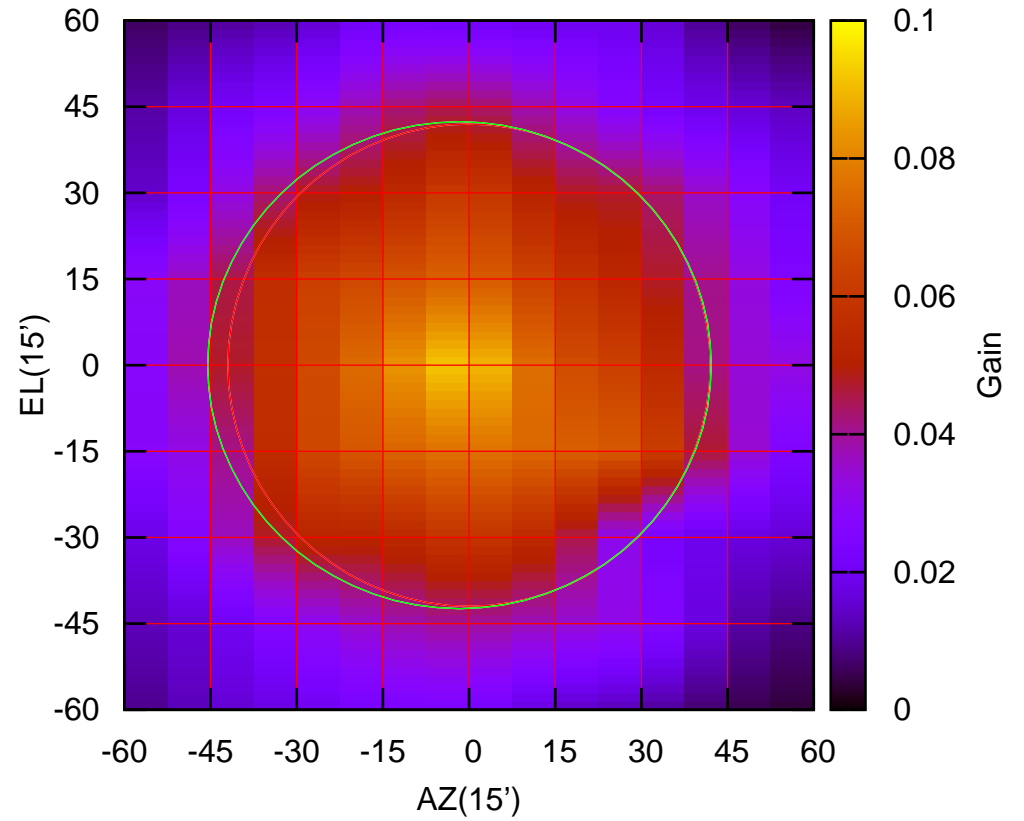
325 MHz.



C10-130 ELOFF= -0.1' ELBEAM= 86.2'

C10-175 AZOFF= -1.7' AZBEAM= 87.7'

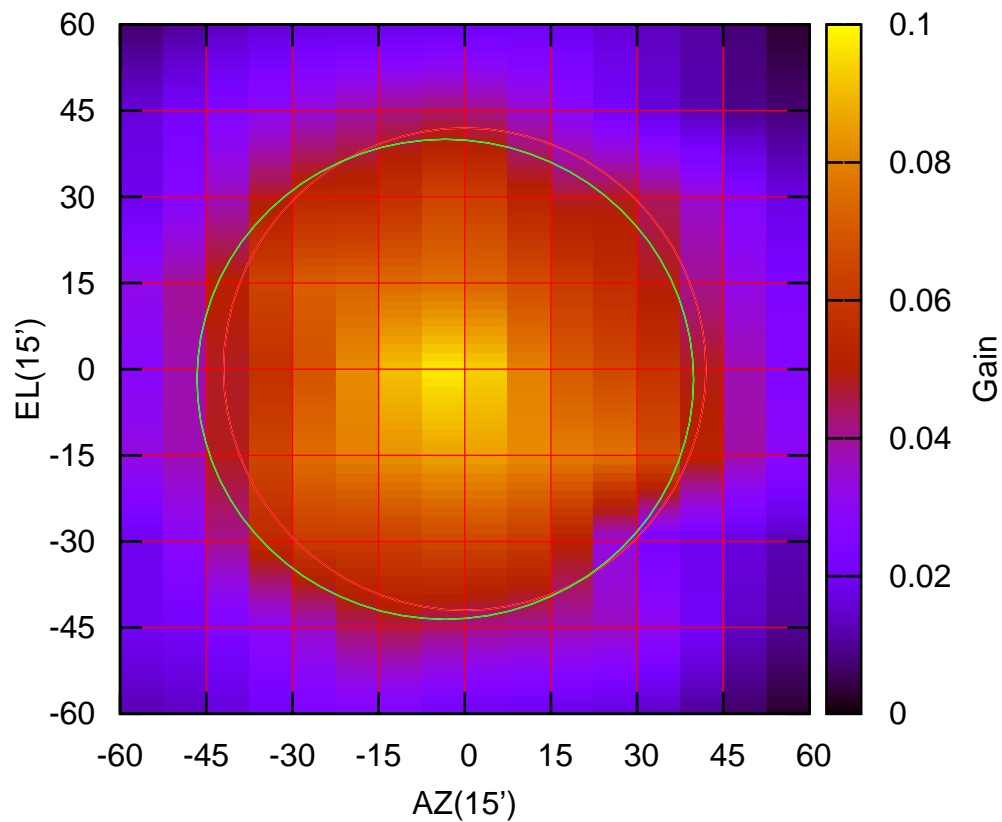
325 MHz.



C10-175 ELOFF= -0.0' ELBEAM= 84.8'

C11-130 AZOFF= -3.4' AZBEAM= 86.5'

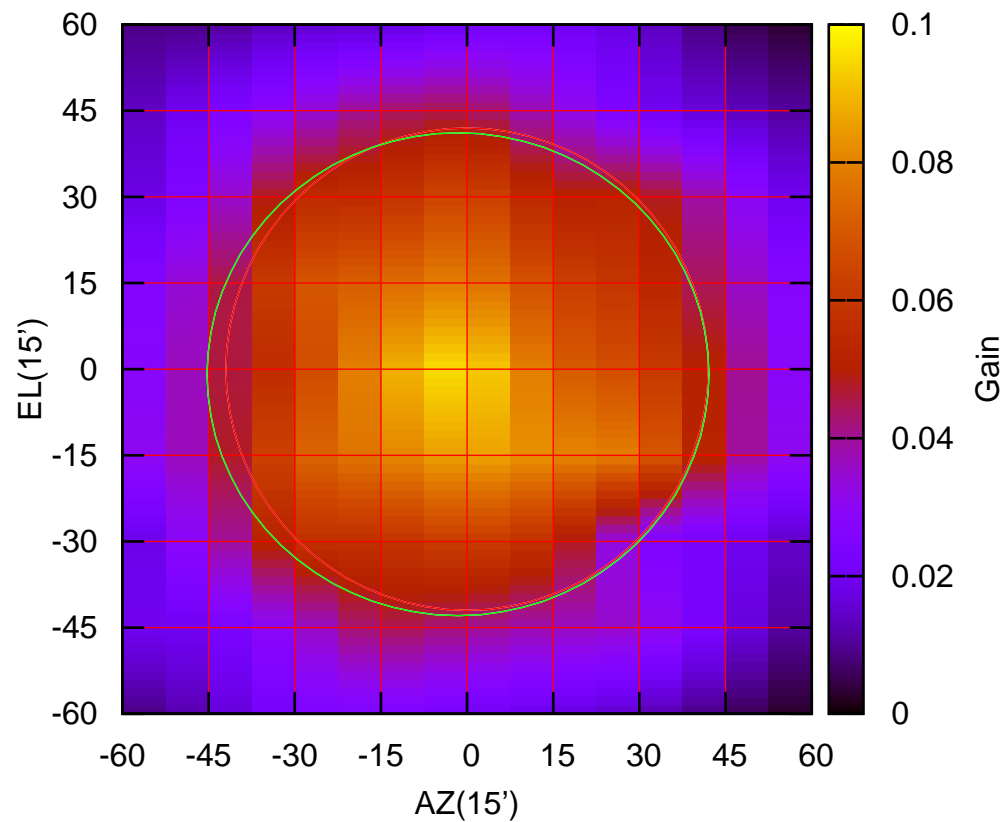
325 MHz.



C11-130 ELOFF= -1.8' ELBEAM= 83.6'

C11-175 AZOFF= -1.6' AZBEAM= 87.4'

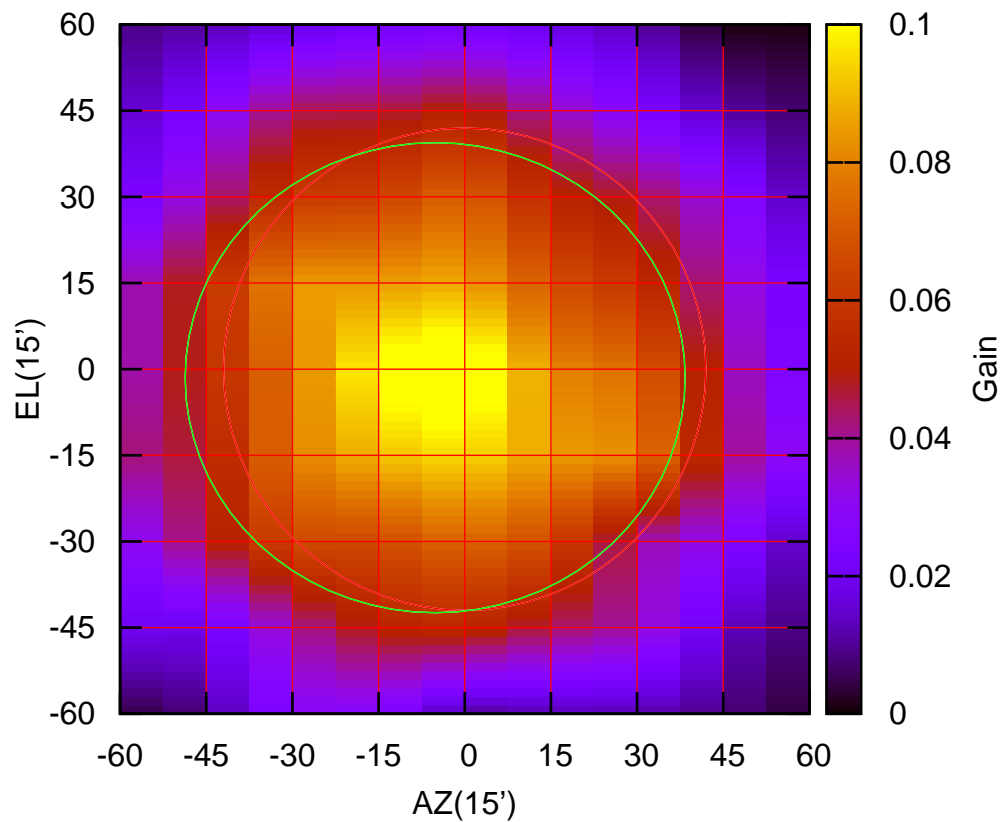
325 MHz.



C11-175 ELOFF= -0.9' ELBEAM= 84.1'

C12-130 AZOFF= -5.2' AZBEAM= 87.1'

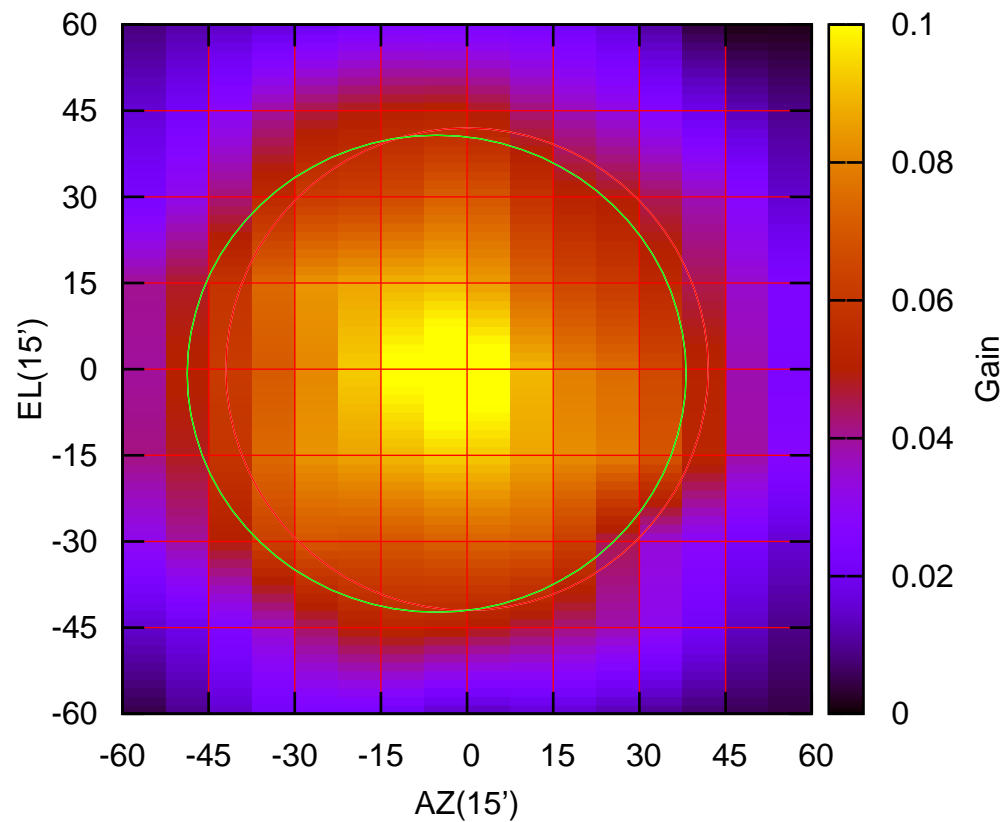
325 MHz.



C12-130 ELOFF= -1.5' ELBEAM= 81.9'

C12-175 AZOFF= -5.3' AZBEAM= 86.9'

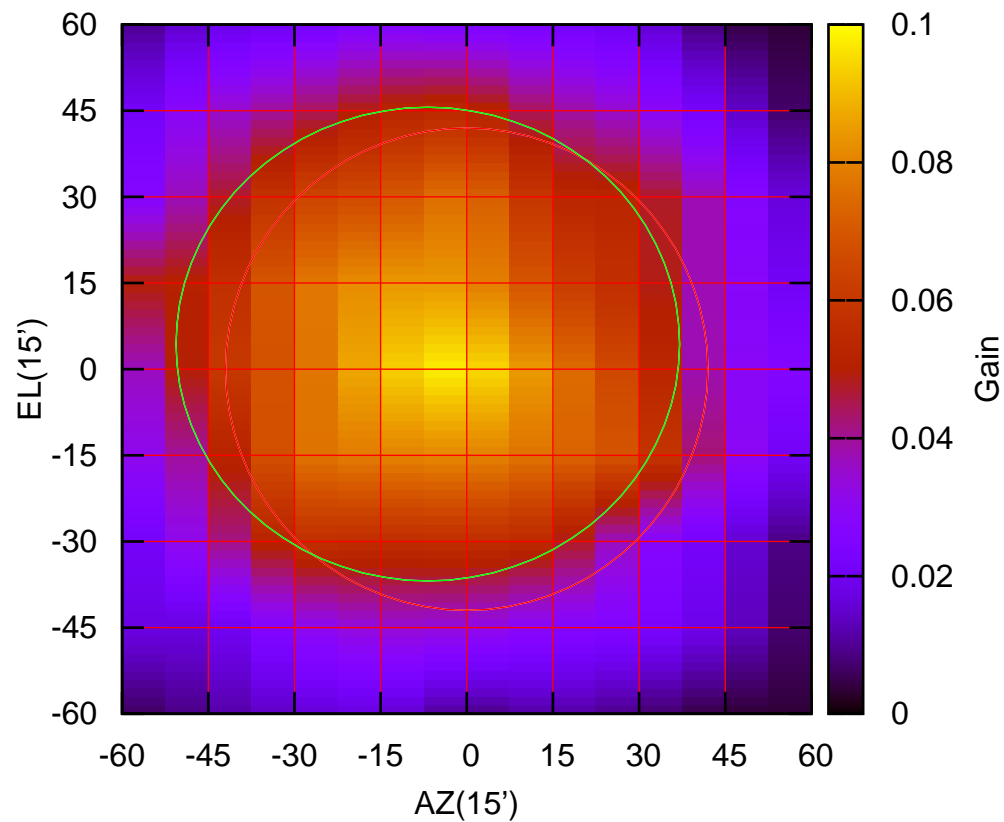
325 MHz.



C12-175 ELOFF= -0.8' ELBEAM= 83.1'

C13-130 AZOFF= -6.8' AZBEAM= 87.7'

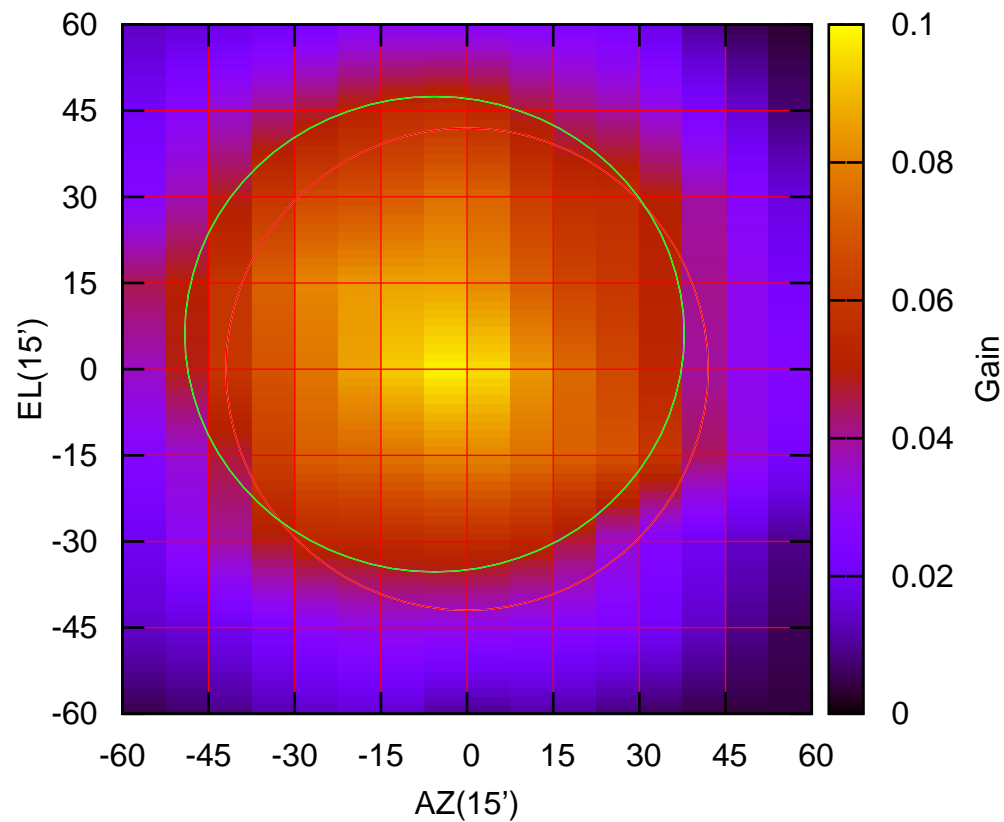
325 MHz.



C13-130 ELOFF= 4.4' ELBEAM= 82.5'

C13-175 AZOFF= -5.7' AZBEAM= 87.0'

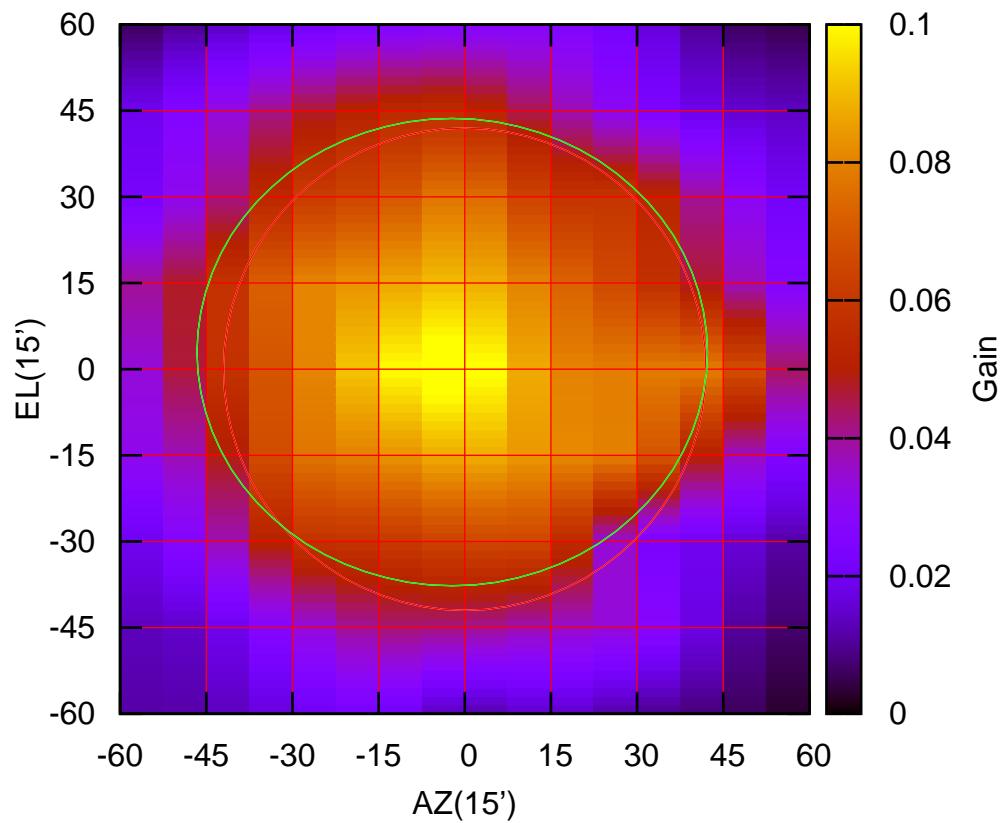
325 MHz.



C13-175 ELOFF= 6.1' ELBEAM= 82.8'

C14-130 AZOFF= -2.2' AZBEAM= 88.9'

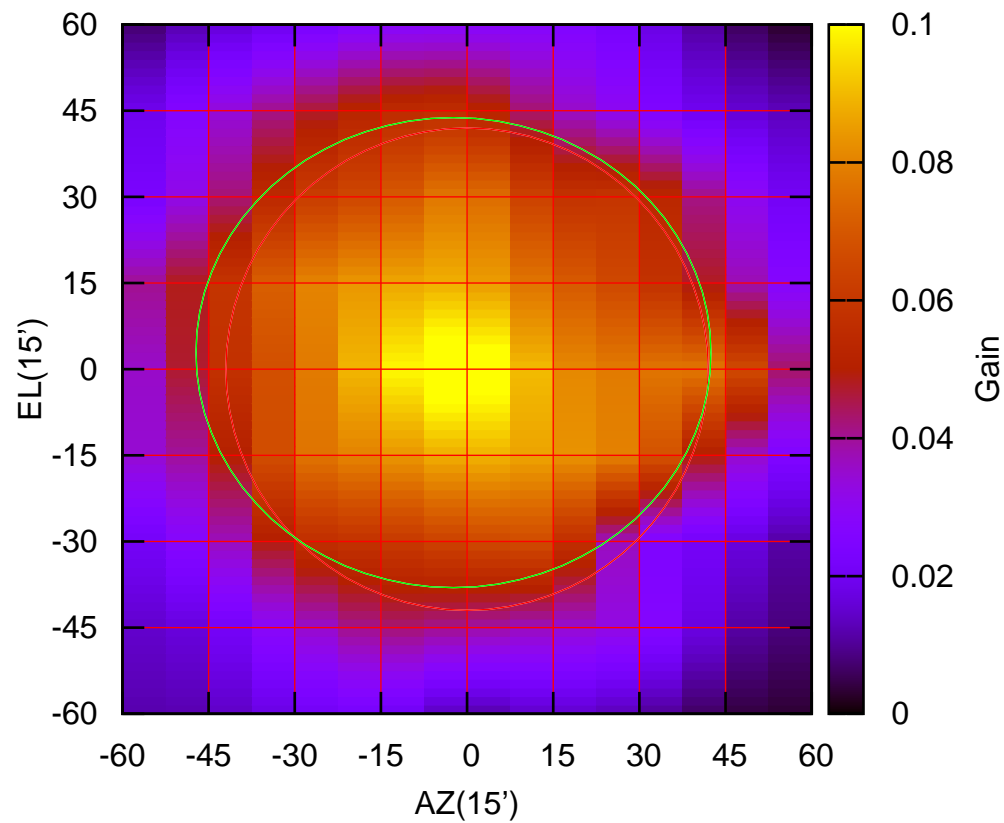
325 MHz.



C14-130 ELOFF= 3.0' ELBEAM= 81.4'

C14-175 AZOFF= -2.4' AZBEAM= 89.7'

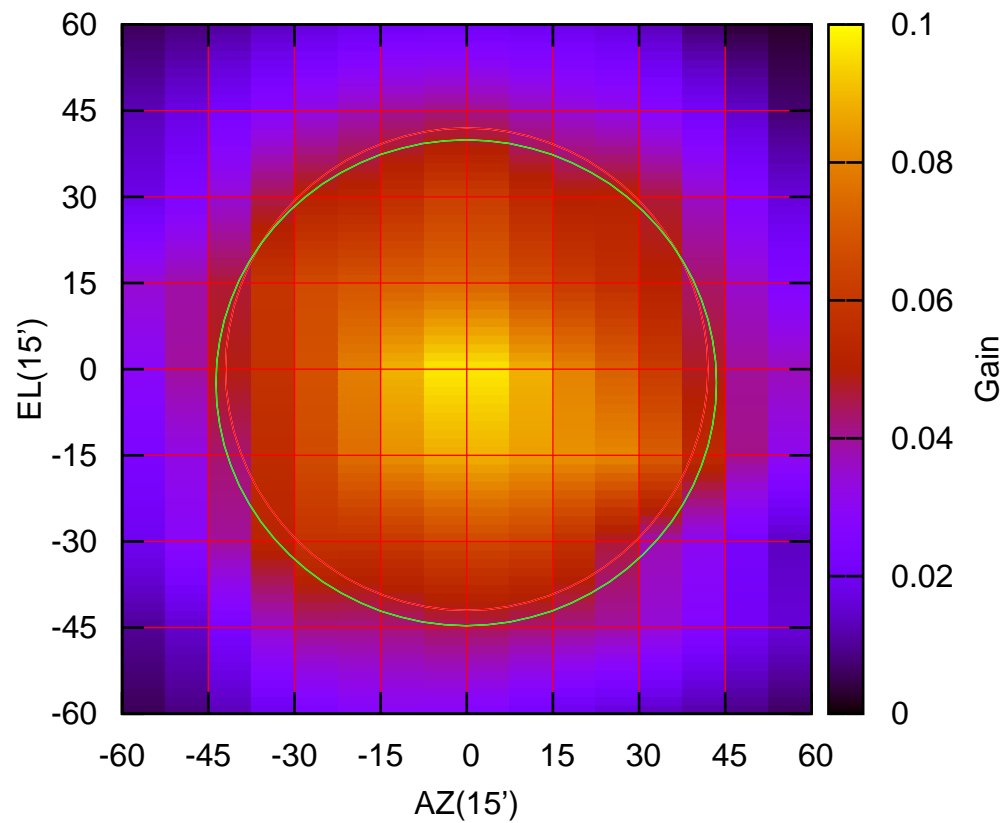
325 MHz.



C14-175 ELOFF= 2.9' ELBEAM= 81.9'

W01-130 AZOFF= -0.1' AZBEAM= 87.2'

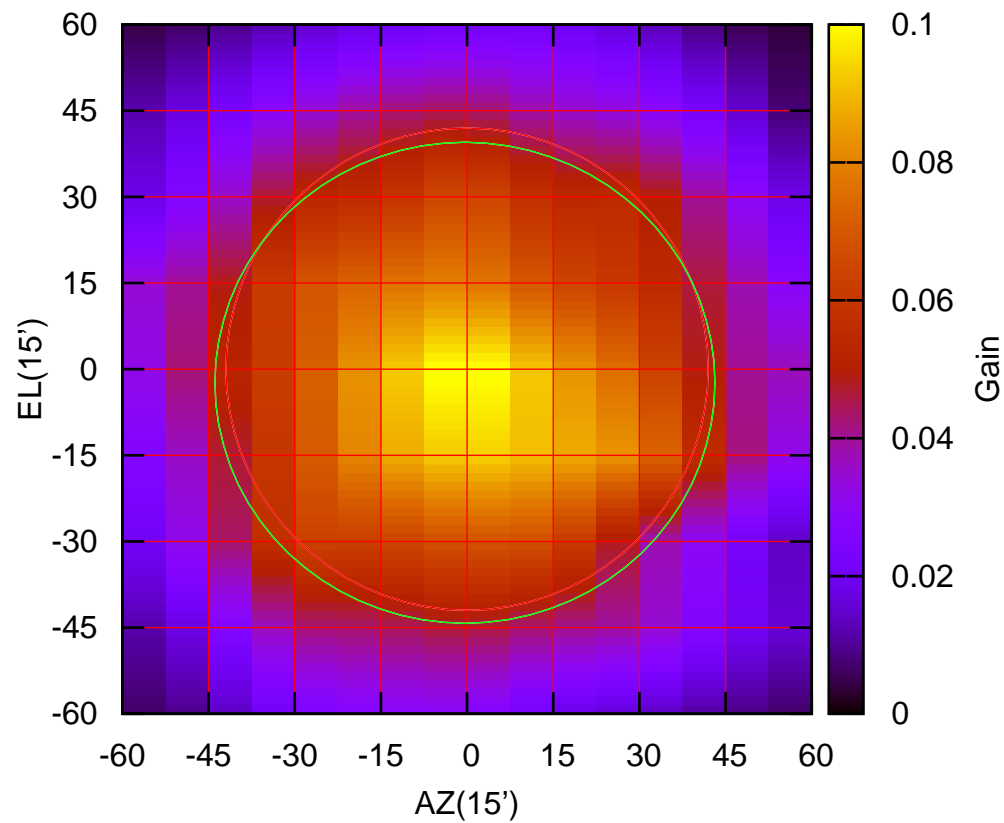
325 MHz.



W01-130 ELOFF= -2.4' ELBEAM= 84.6'

W01-175 AZOFF= -0.4' AZBEAM= 87.1'

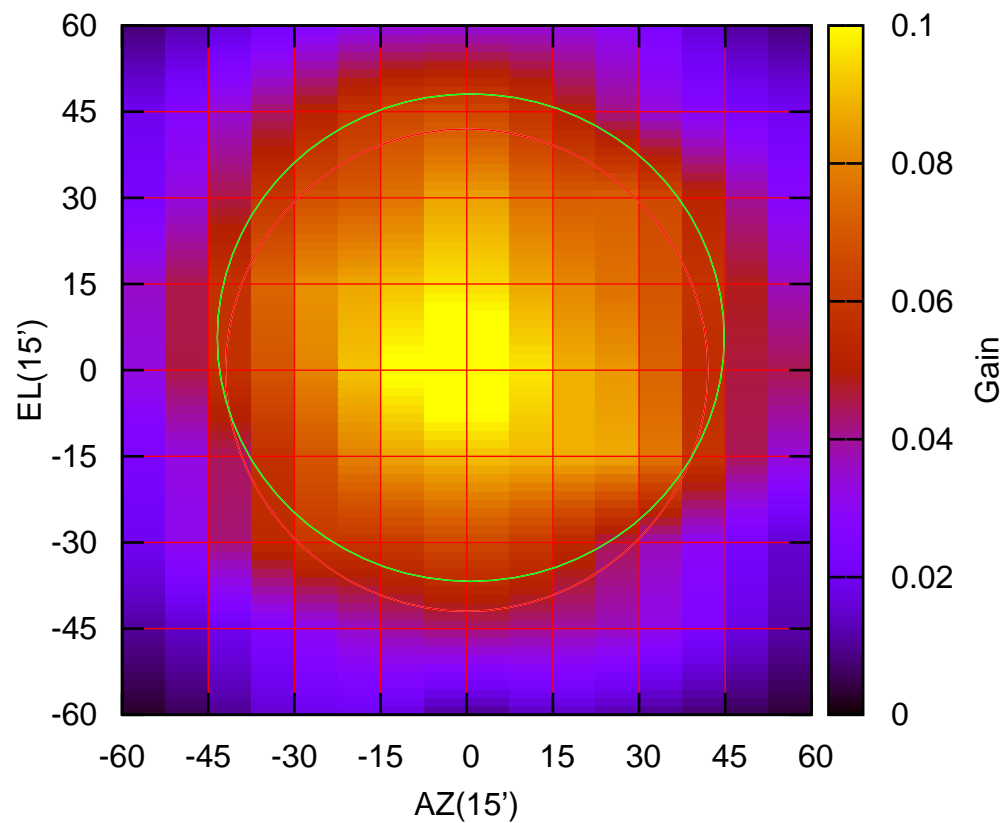
325 MHz.



W01-175 ELOFF= -2.4' ELBEAM= 83.8'

W02-130 AZOFF= 0.7' AZBEAM= 88.3'

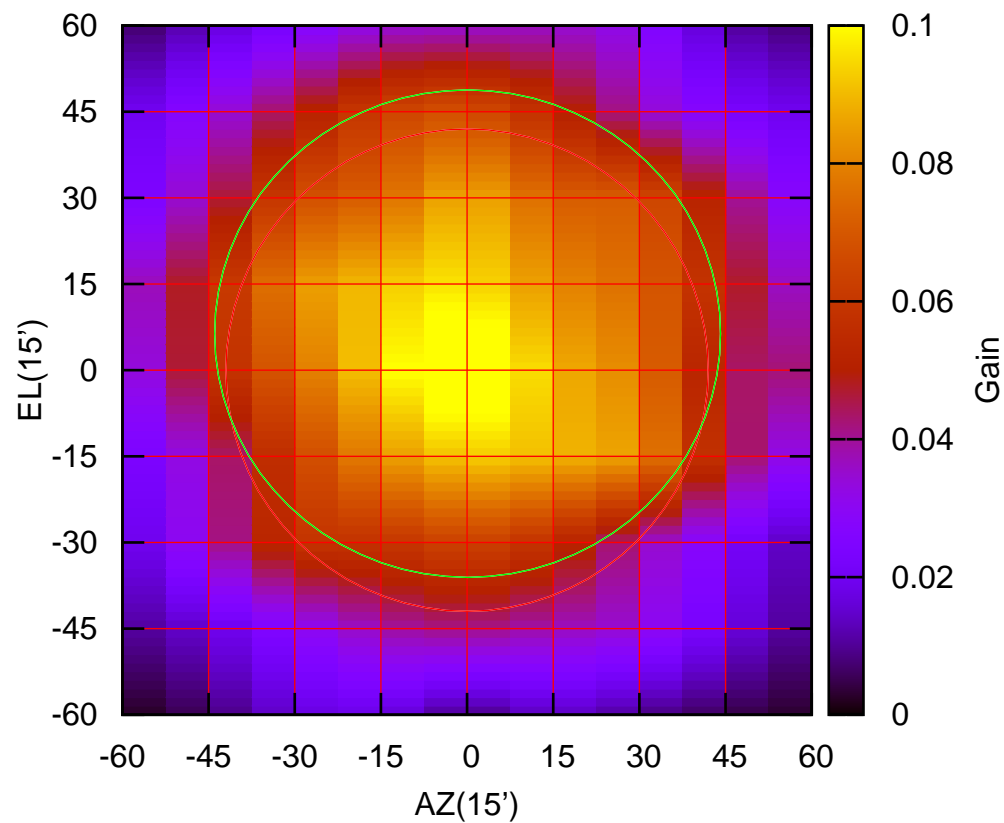
325 MHz.



W02-130 ELOFF= 5.7' ELBEAM= 84.9'

W02-175 AZOFF= 0.1' AZBEAM= 88.1'

325 MHz.

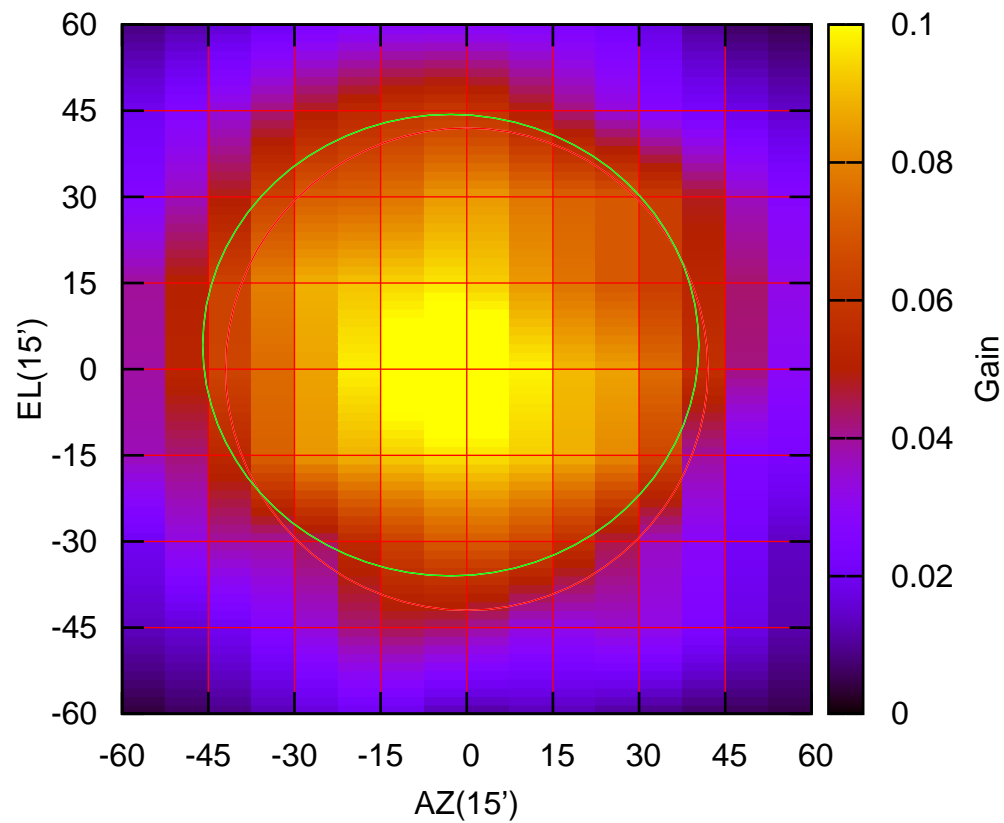


W02-175 ELOFF= 6.4' ELBEAM= 84.9'



W03-130 AZOFF= -2.8' AZBEAM= 86.4'

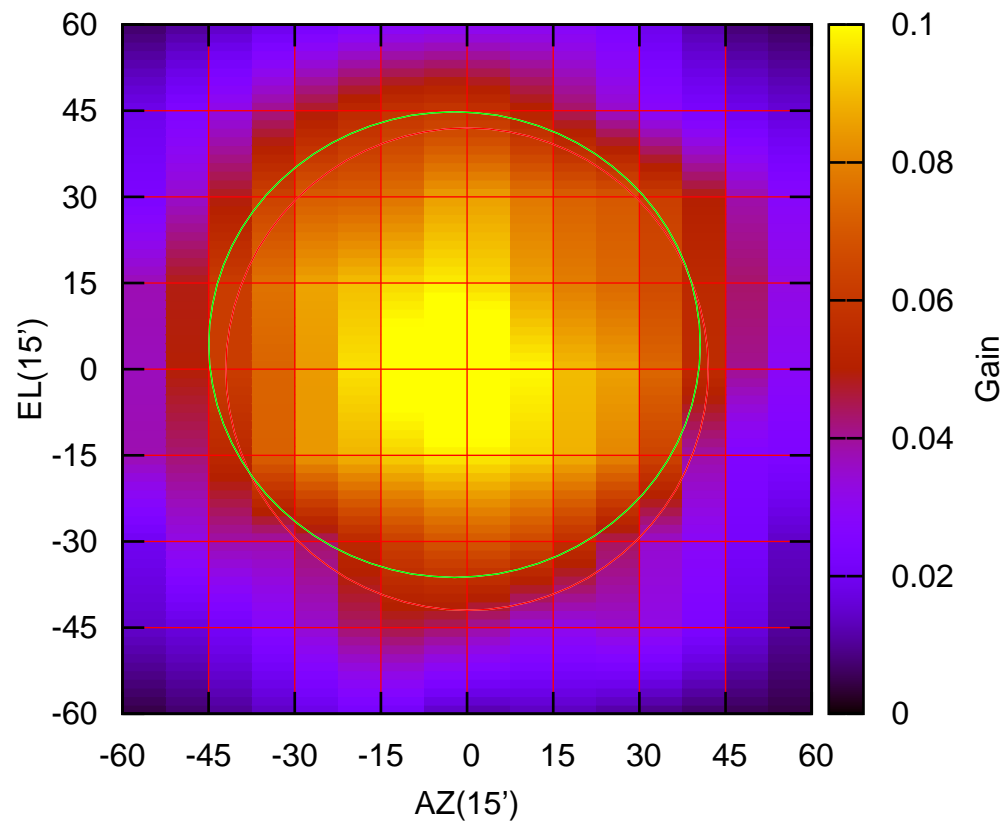
325 MHz.



W03-130 ELOFF= 4.2' ELBEAM= 80.4'

W03-175 AZOFF= -2.2' AZBEAM= 85.6'

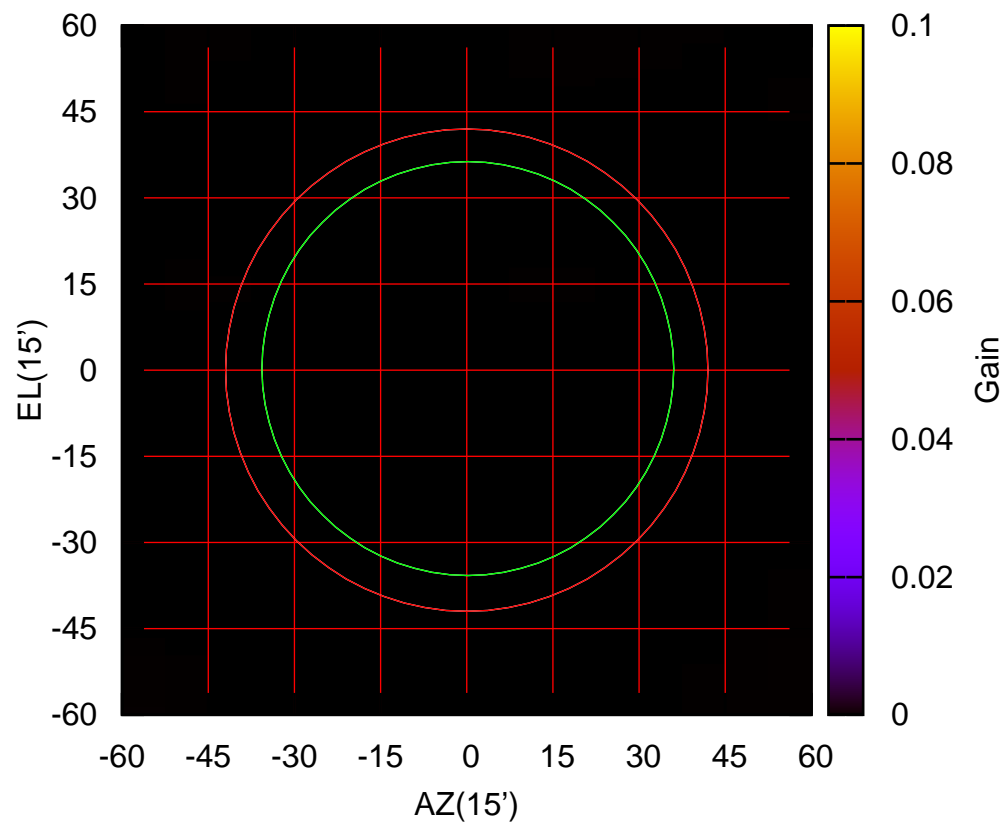
325 MHz.



W03-175 ELOFF= 4.3' ELBEAM= 81.1'

W04-130 AZOFF= 0.2' AZBEAM= 71.7'

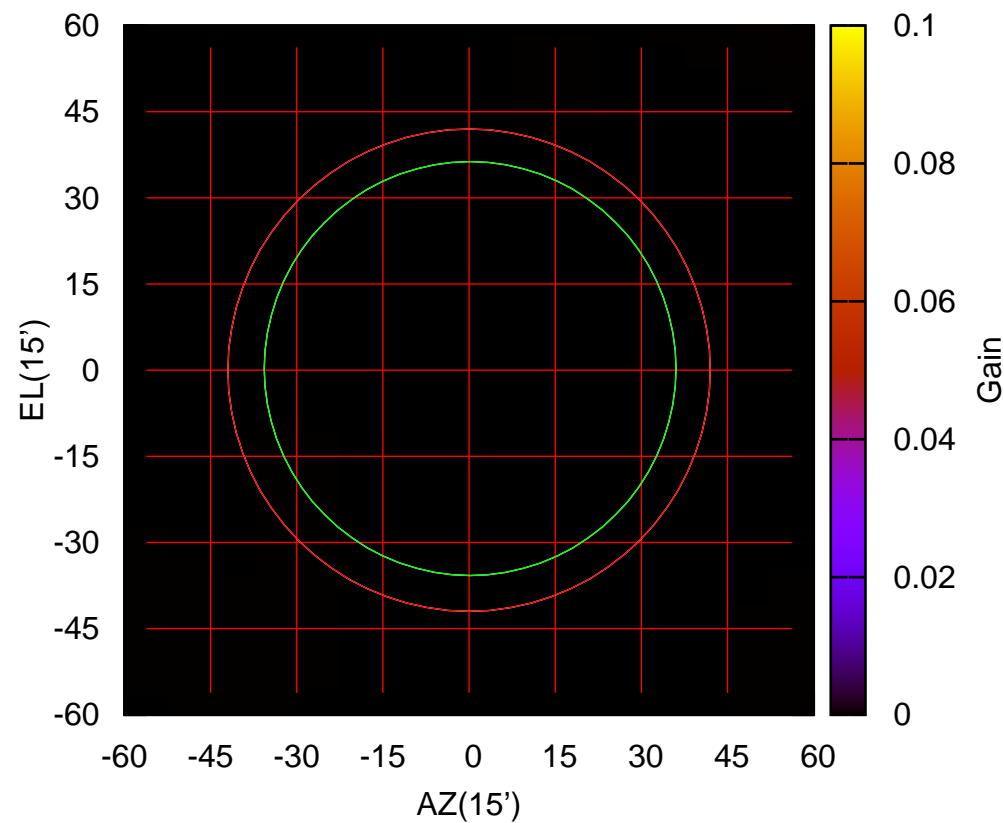
325 MHz.



W04-130 ELOFF= 0.3' ELBEAM= 72.1'

W04-175 AZOFF= 0.2' AZBEAM= 71.7'

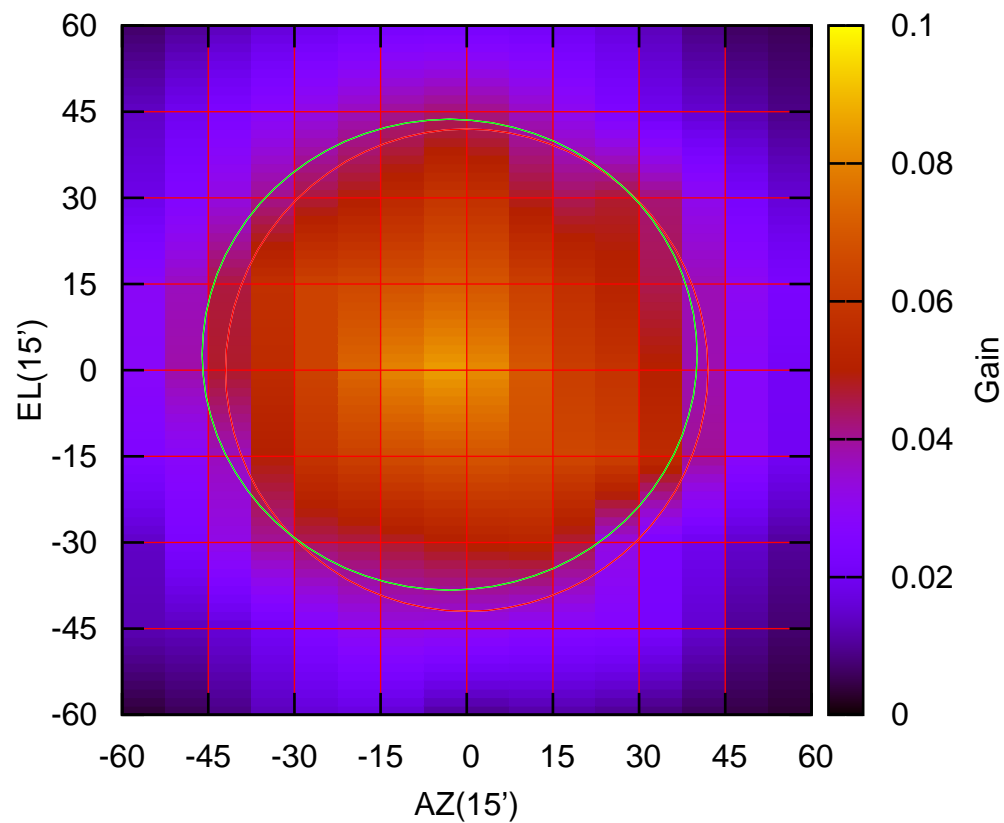
325 MHz.



W04-175 ELOFF= 0.3' ELBEAM= 72.1'

W05-130 AZOFF= -3.0' AZBEAM= 86.2'

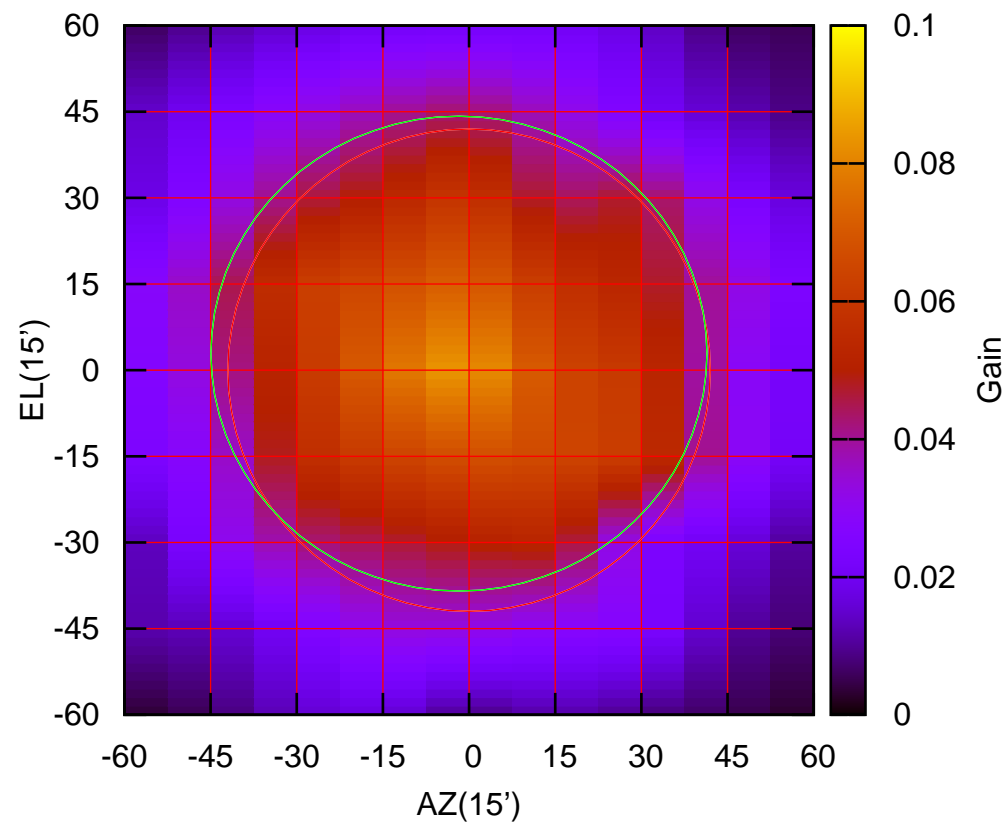
325 MHz.



W05-130 ELOFF= 2.7' ELBEAM= 82.0'

W05-175 AZOFF= -1.8' AZBEAM= 86.4'

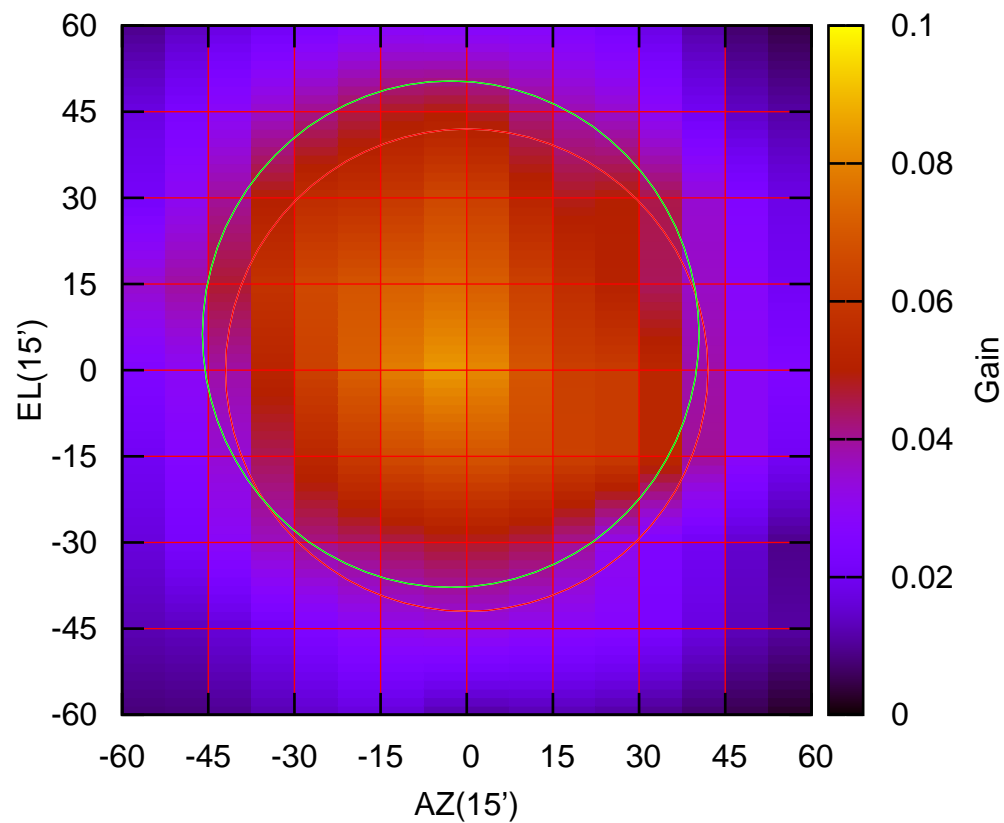
325 MHz.



W05-175 ELOFF= 2.9' ELBEAM= 82.7'

W06-130 AZOFF= -2.8' AZBEAM= 86.5'

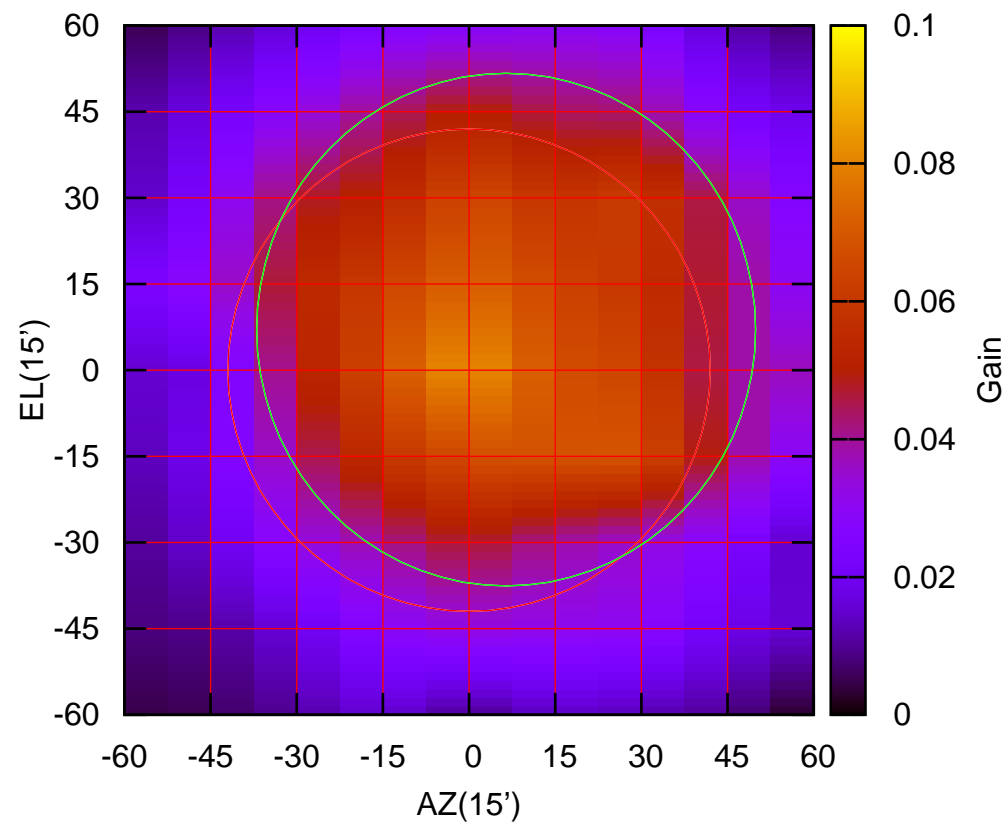
325 MHz.



W06-130 ELOFF= 6.3' ELBEAM= 88.2'

W06-175 AZOFF= 6.5' AZBEAM= 86.9'

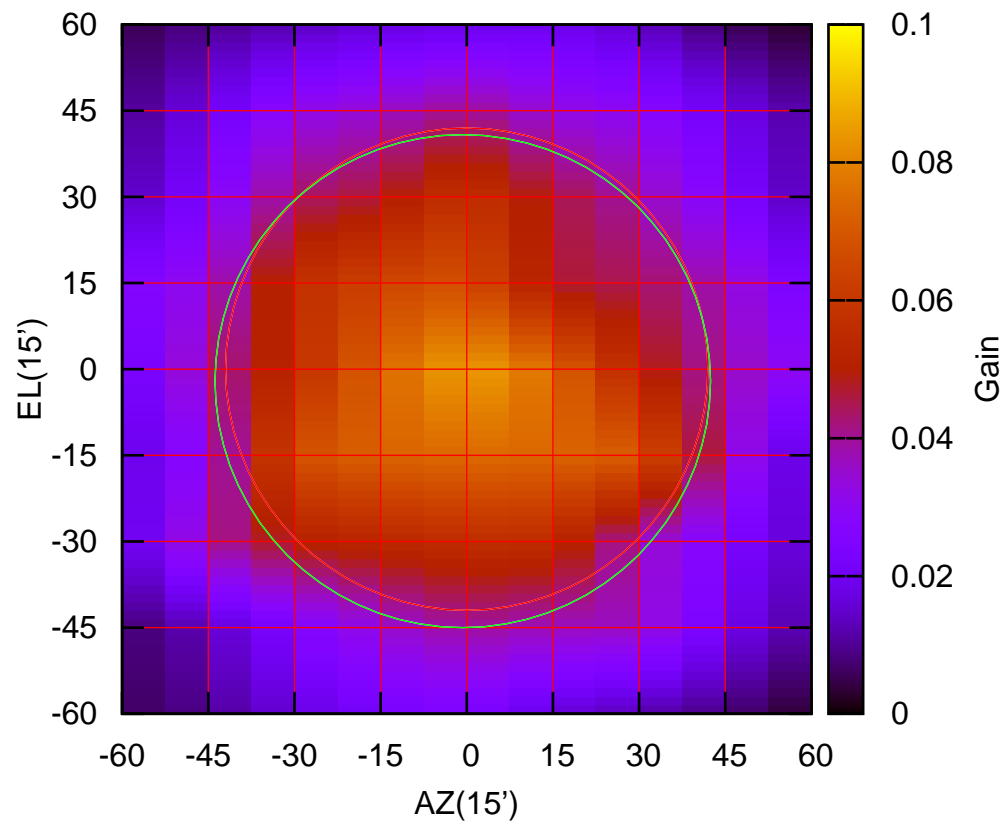
325 MHz.



W06-175 ELOFF= 7.1' ELBEAM= 89.3'

E02-130 AZOFF= -0.7' AZBEAM= 86.3'

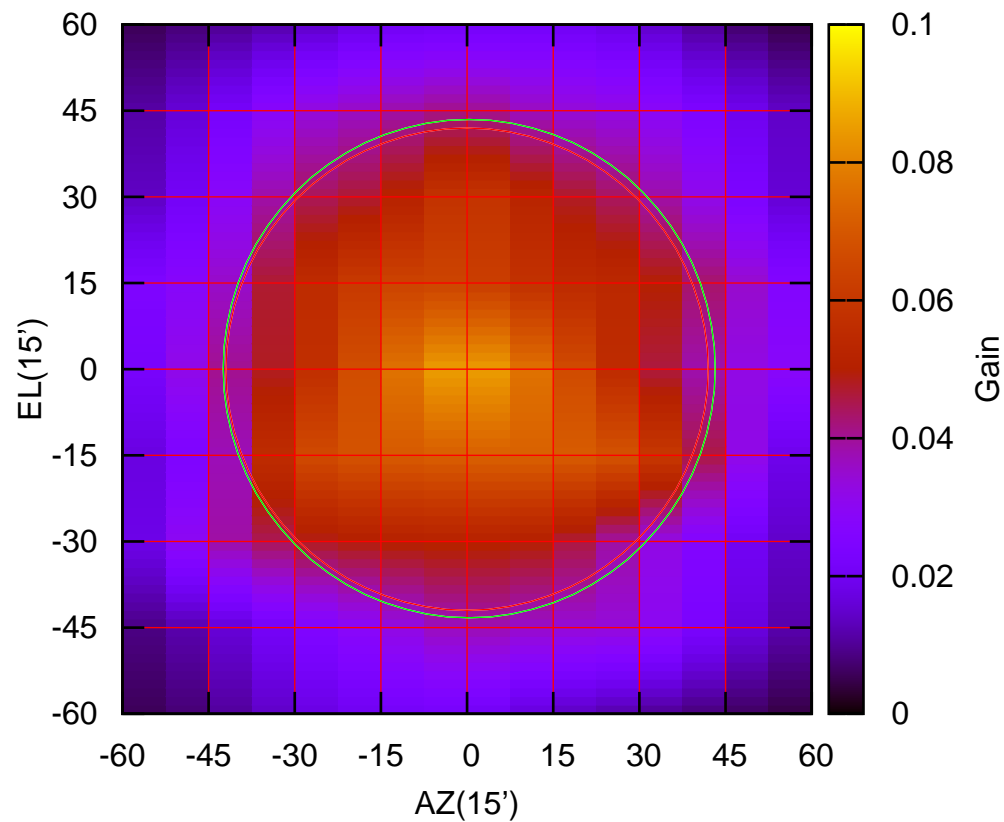
325 MHz.



E02-130 ELOFF= -2.1' ELBEAM= 85.9'

E02-175 AZOFF= 0.4' AZBEAM= 85.7'

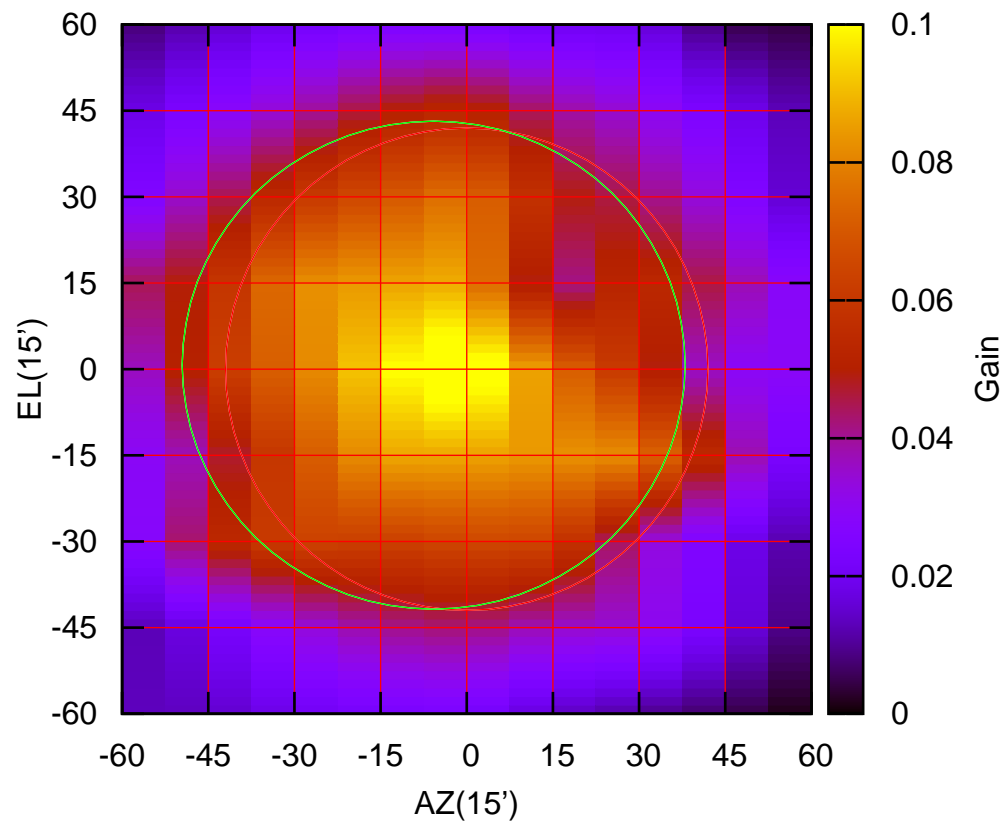
325 MHz.



E02-175 ELOFF= 0.1' ELBEAM= 86.8'

E03-130 AZOFF= -5.8' AZBEAM= 87.6'

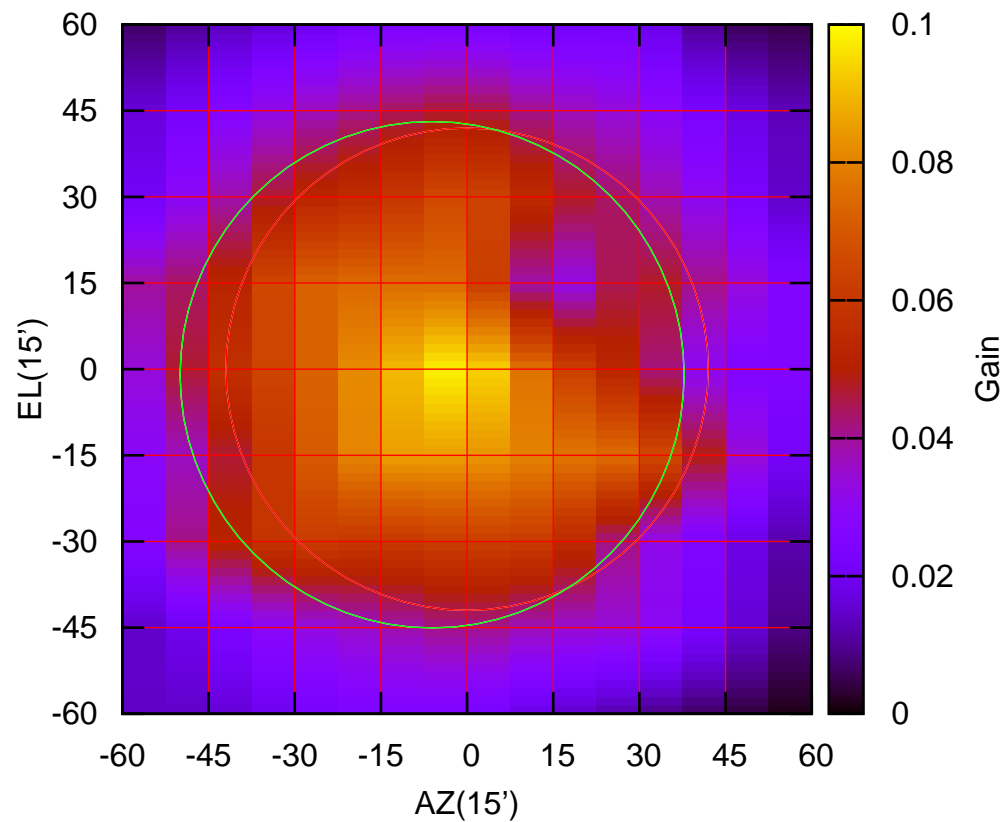
325 MHz.



E03-130 ELOFF= 0.7' ELBEAM= 85.0'

E03-175 AZOFF= -6.1' AZBEAM= 87.8'

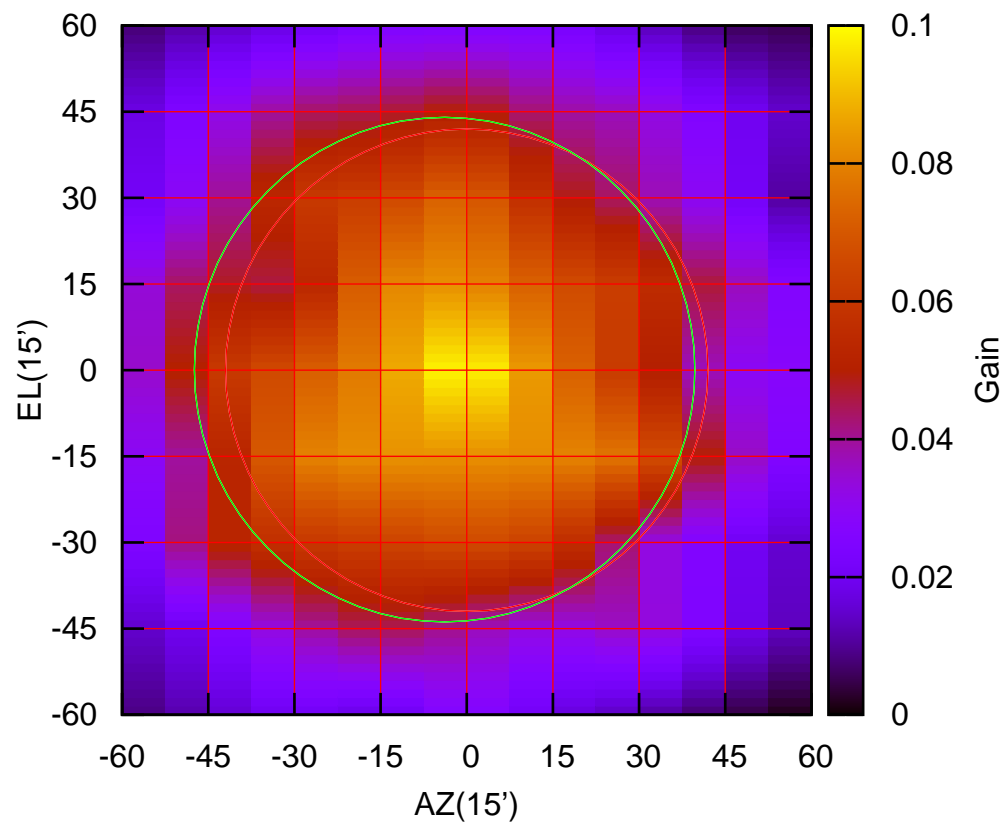
325 MHz.



E03-175 ELOFF= -1.0' ELBEAM= 88.2'

E04-130 AZOFF= -3.9' AZBEAM= 87.2'

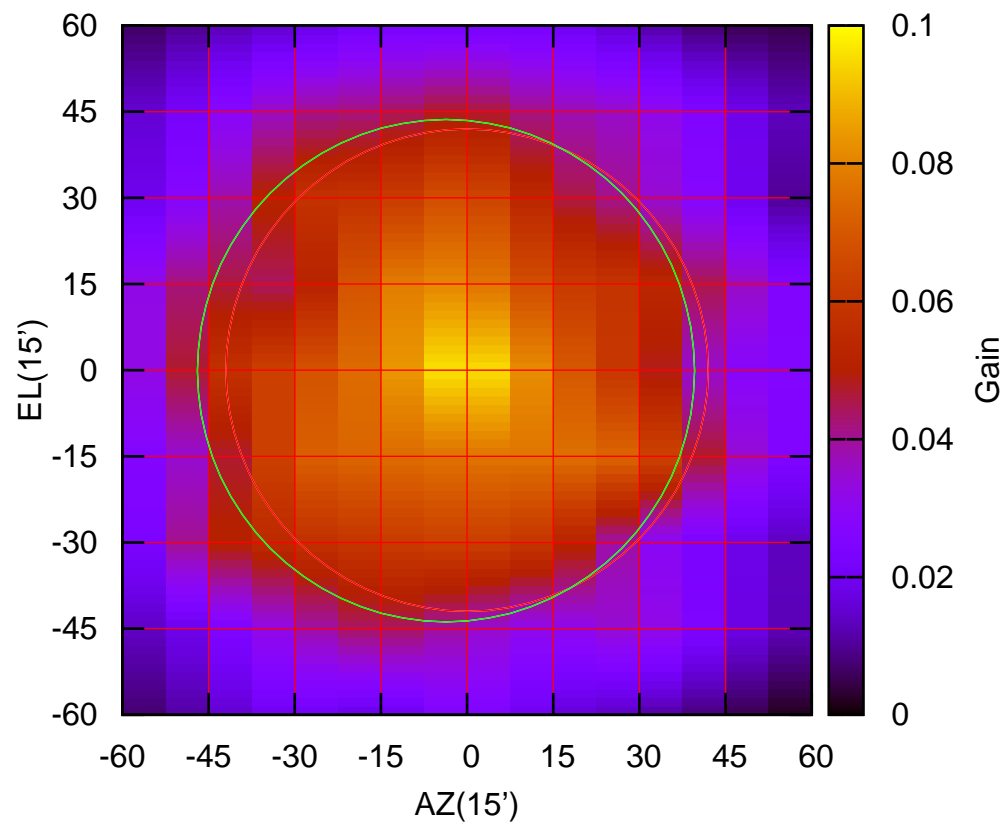
325 MHz.



E04-130 ELOFF= 0.1' ELBEAM= 87.9'

E04-175 AZOFF= -3.7' AZBEAM= 86.6'

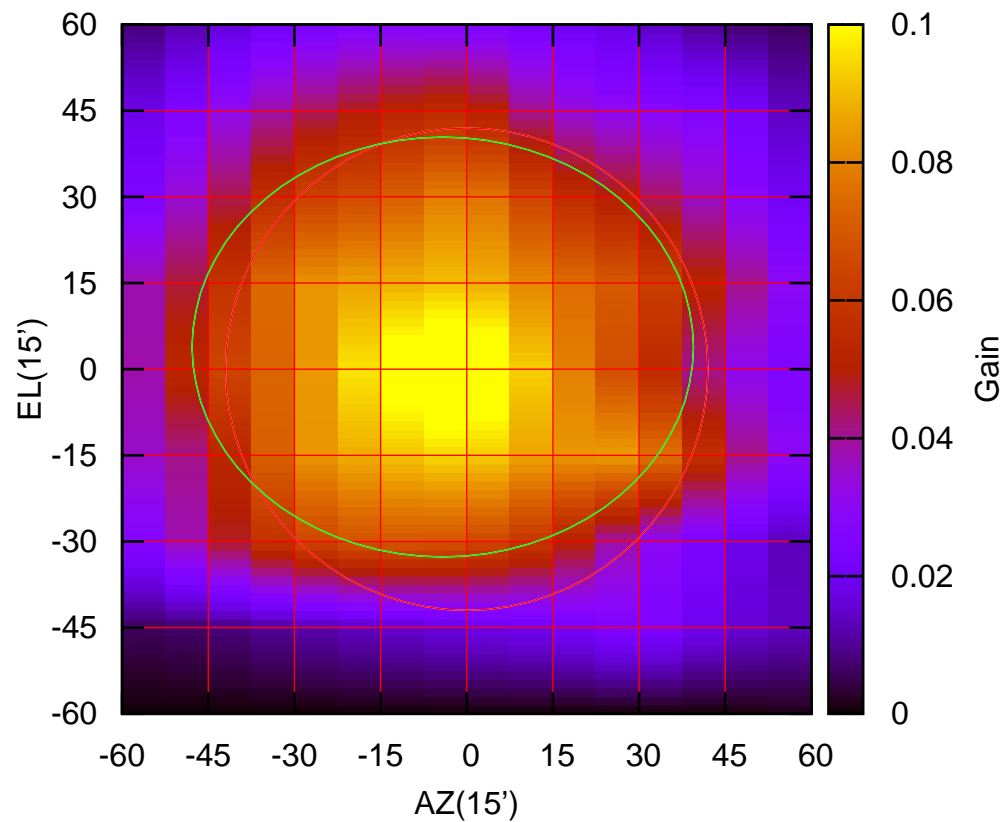
325 MHz.



E04-175 ELOFF= -0.1' ELBEAM= 87.5'

E05-130 AZOFF= -4.2' AZBEAM= 87.3'

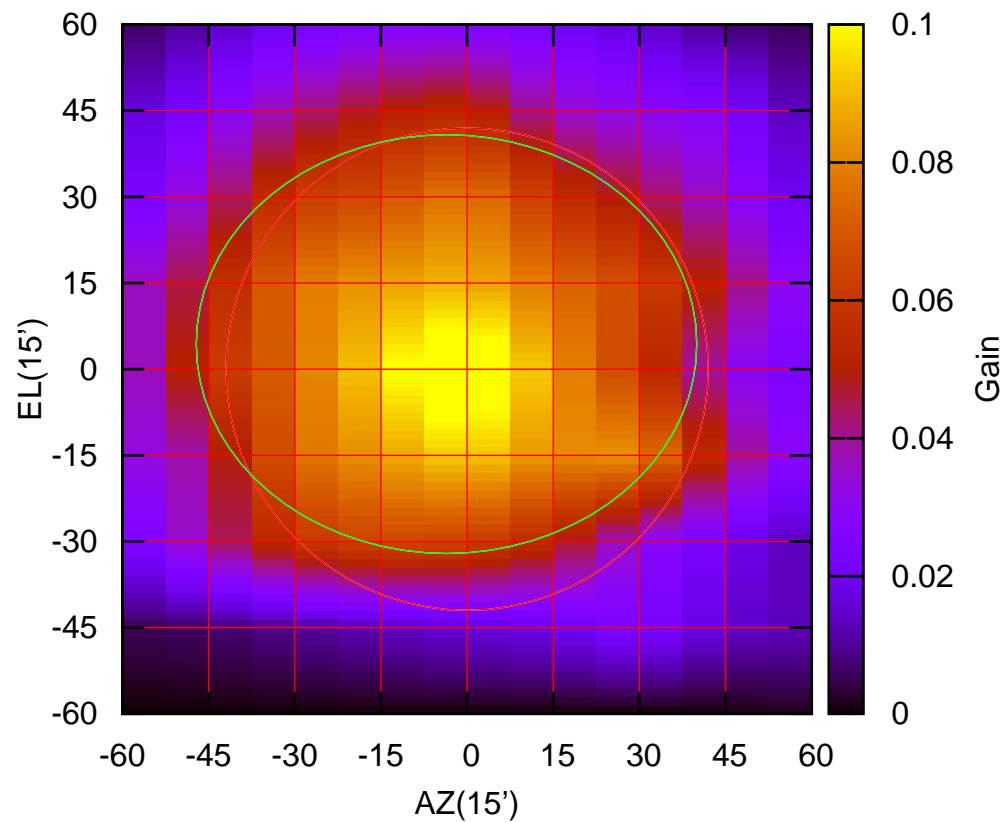
325 MHz.



E05-130 ELOFF= 3.9' ELBEAM= 73.1'

E05-175 AZOFF= -3.6' AZBEAM= 87.2'

325 MHz.

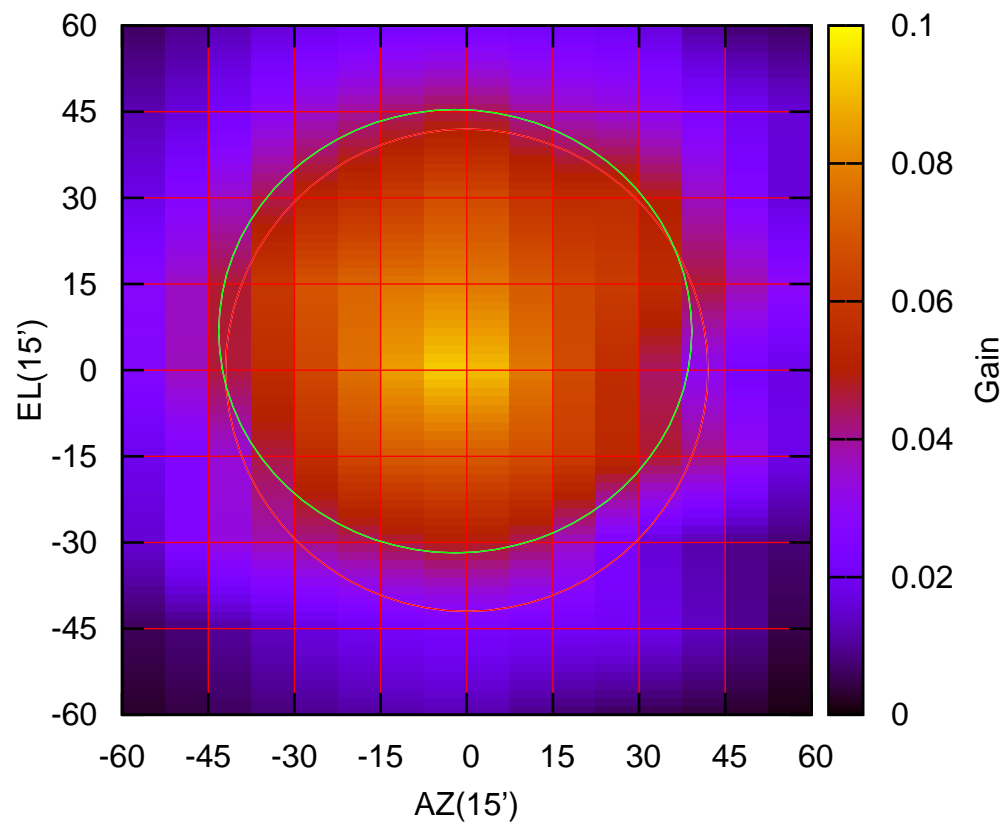


E05-175 ELOFF= 4.4' ELBEAM= 72.9'



E06-130 AZOFF= -2.0' AZBEAM= 82.4'

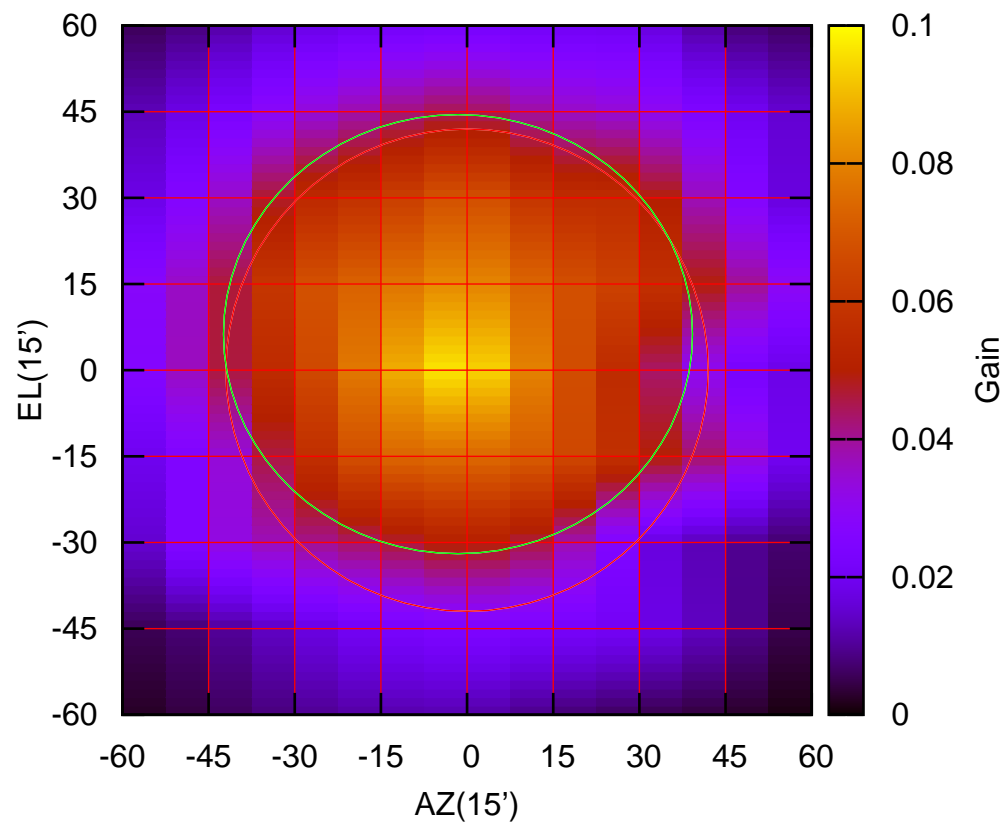
325 MHz.



E06-130 ELOFF= 6.8' ELBEAM= 77.2'

E06-175 AZOFF= -1.6' AZBEAM= 81.7'

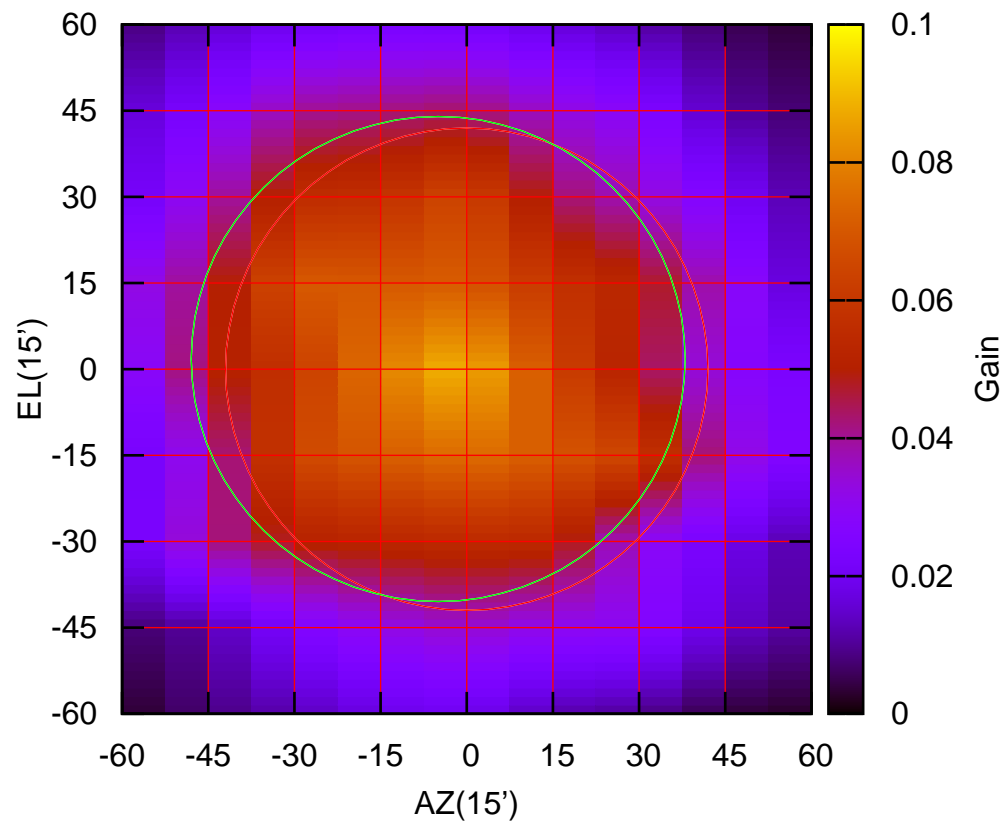
325 MHz.



E06-175 ELOFF= 6.3' ELBEAM= 76.5'

S01-130 AZOFF= -5.0' AZBEAM= 86.0'

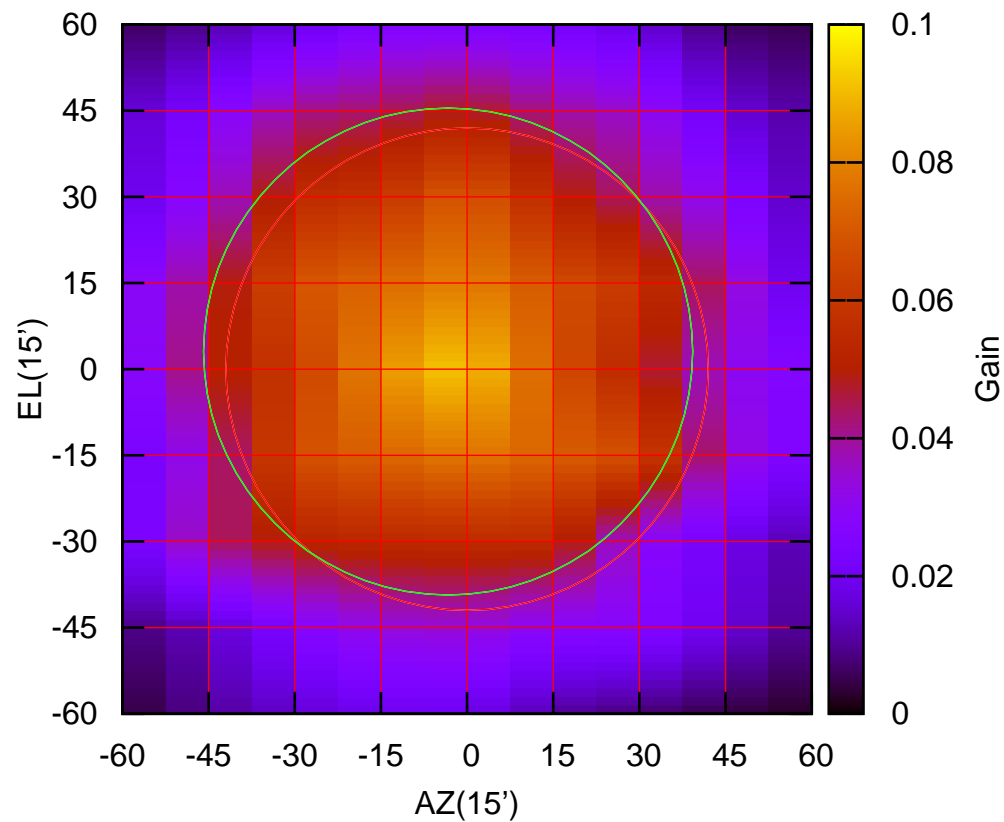
325 MHz.



S01-130 ELOFF= 1.8' ELBEAM= 84.5'

S01-175 AZOFF= -3.3' AZBEAM= 85.2'

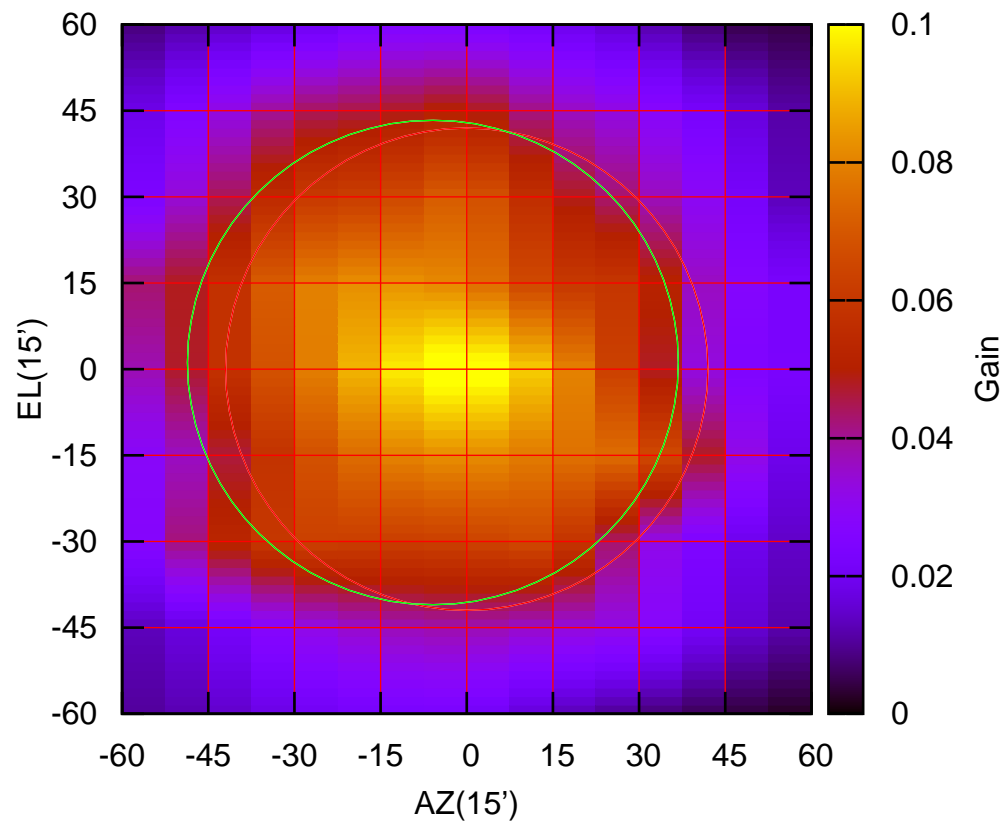
325 MHz.



S01-175 ELOFF= 3.1' ELBEAM= 84.8'

S02-130 AZOFF= -5.9' AZBEAM= 85.5'

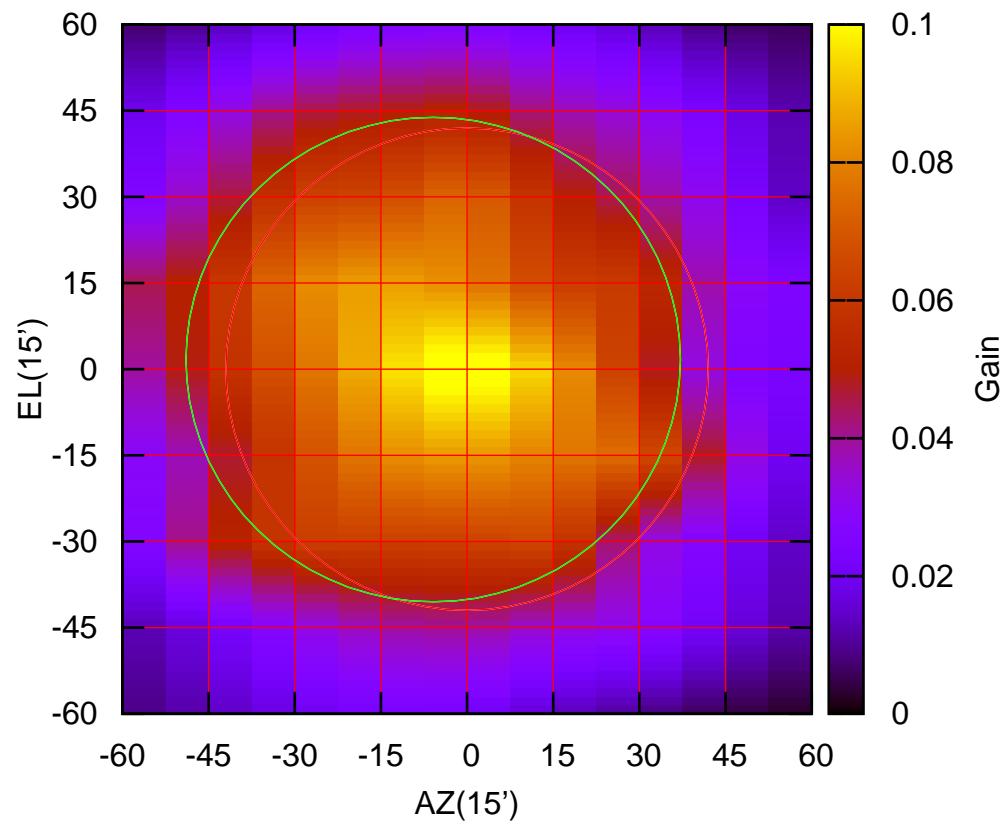
325 MHz.



S02-130 ELOFF= 1.2' ELBEAM= 84.4'

S02-175 AZOFF= -5.9' AZBEAM= 86.1'

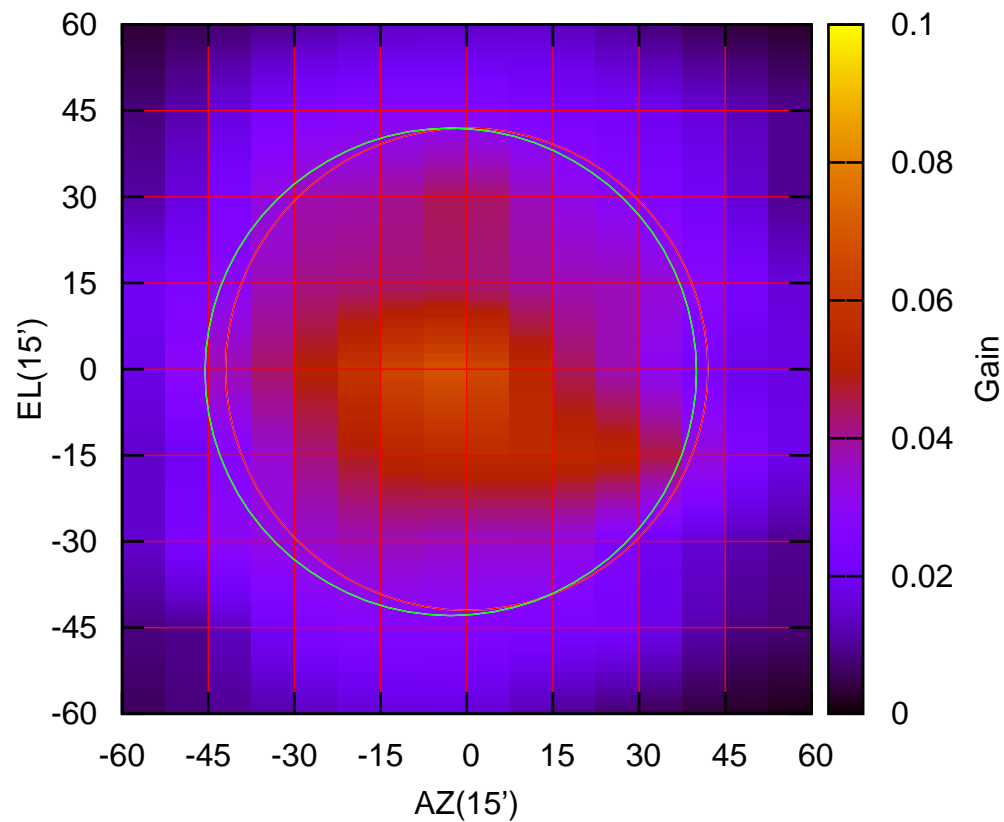
325 MHz.



S02-175 ELOFF= 1.7' ELBEAM= 84.4'

S03-130 AZOFF= -2.8' AZBEAM= 85.6'

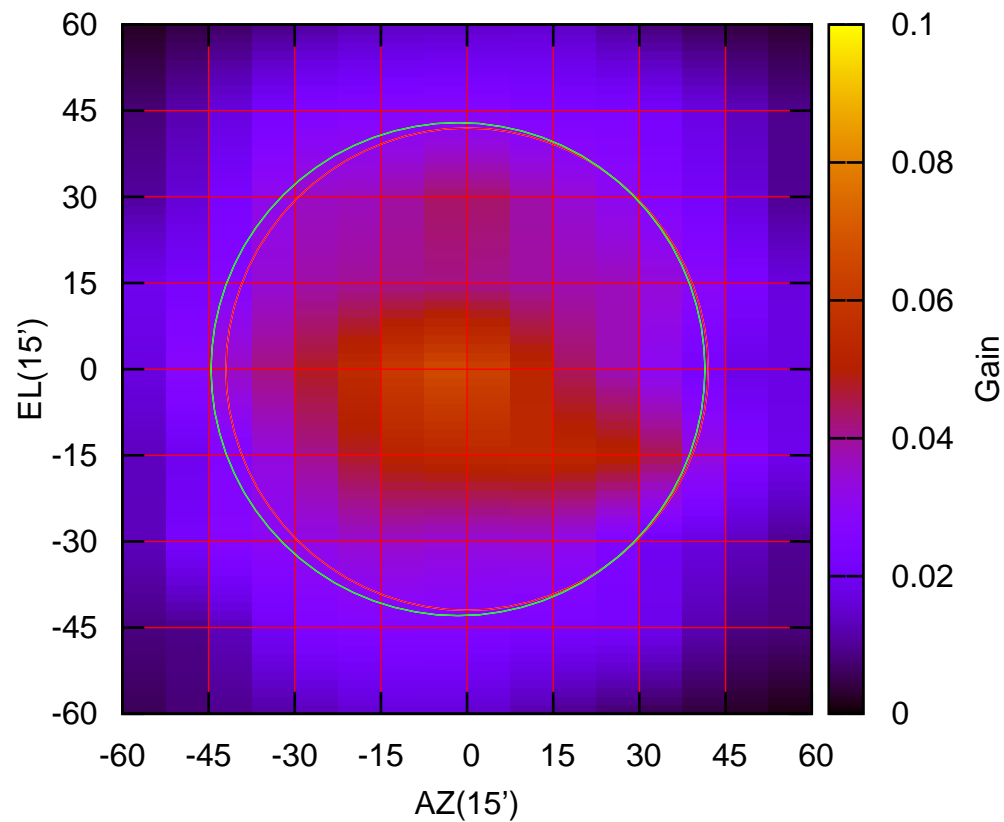
325 MHz.



S03-130 ELOFF= -0.5' ELBEAM= 84.9'

S03-175 AZOFF= -1.6' AZBEAM= 86.0'

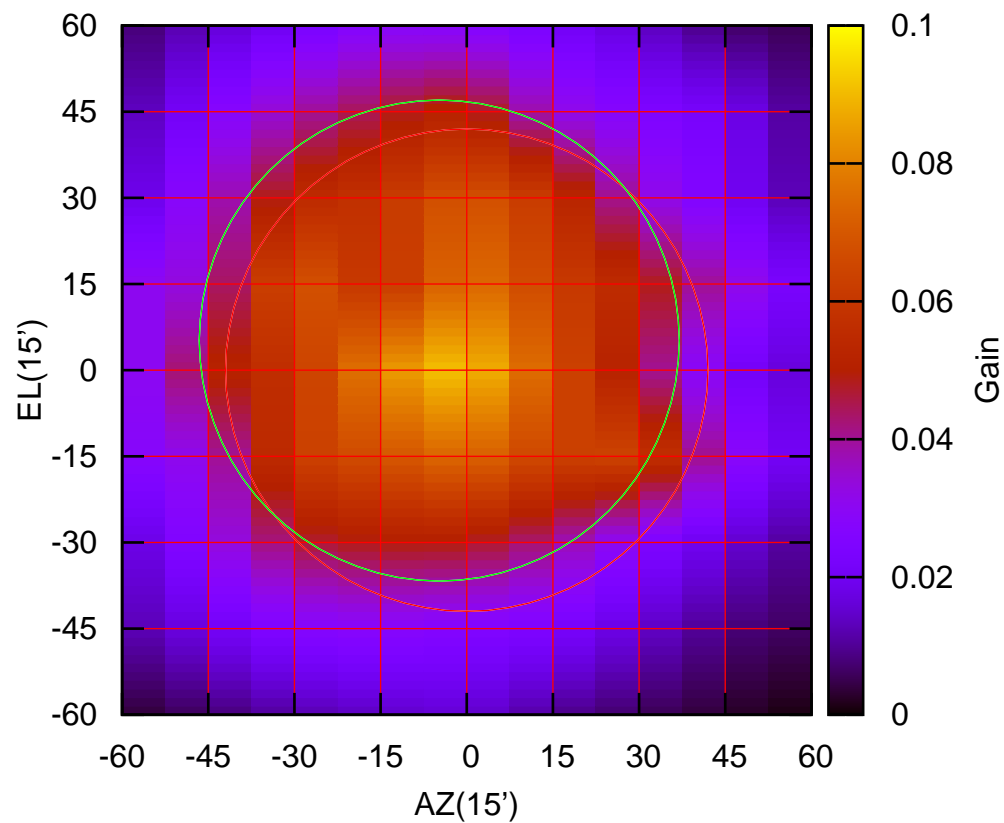
325 MHz.



S03-175 ELOFF= 0.0' ELBEAM= 85.9'

S04-130 AZOFF= -4.8' AZBEAM= 83.6'

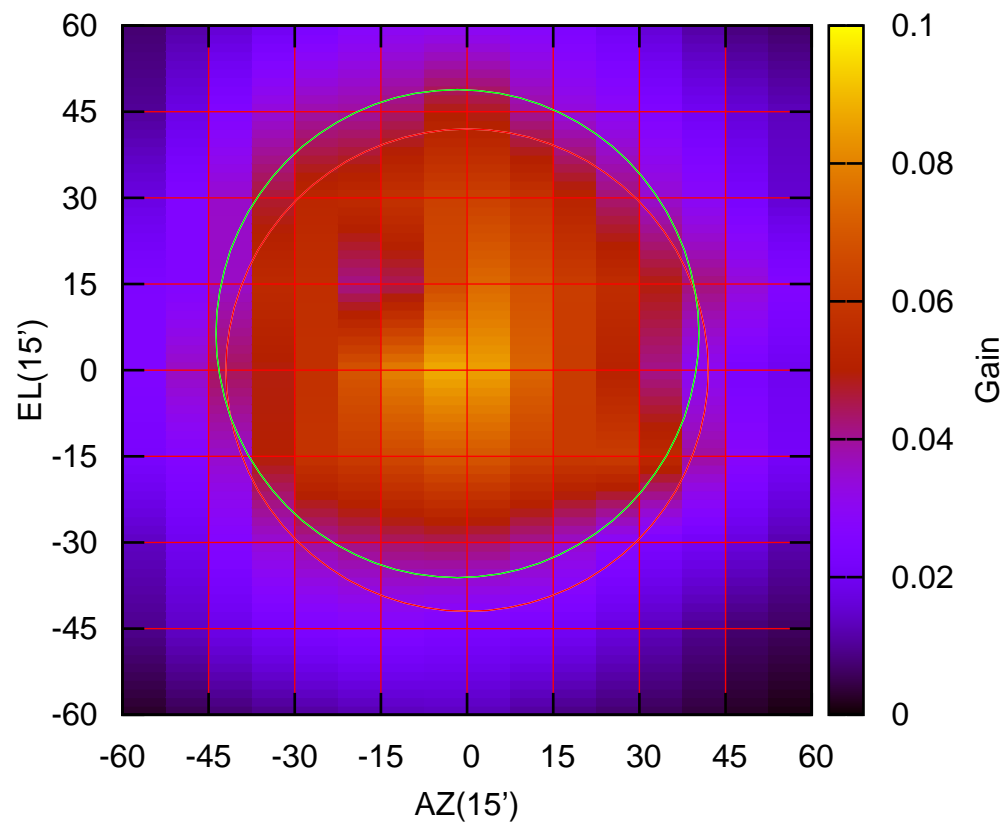
325 MHz.



S04-130 ELOFF= 5.2' ELBEAM= 83.8'

S04-175 AZOFF= -1.7' AZBEAM= 84.1'

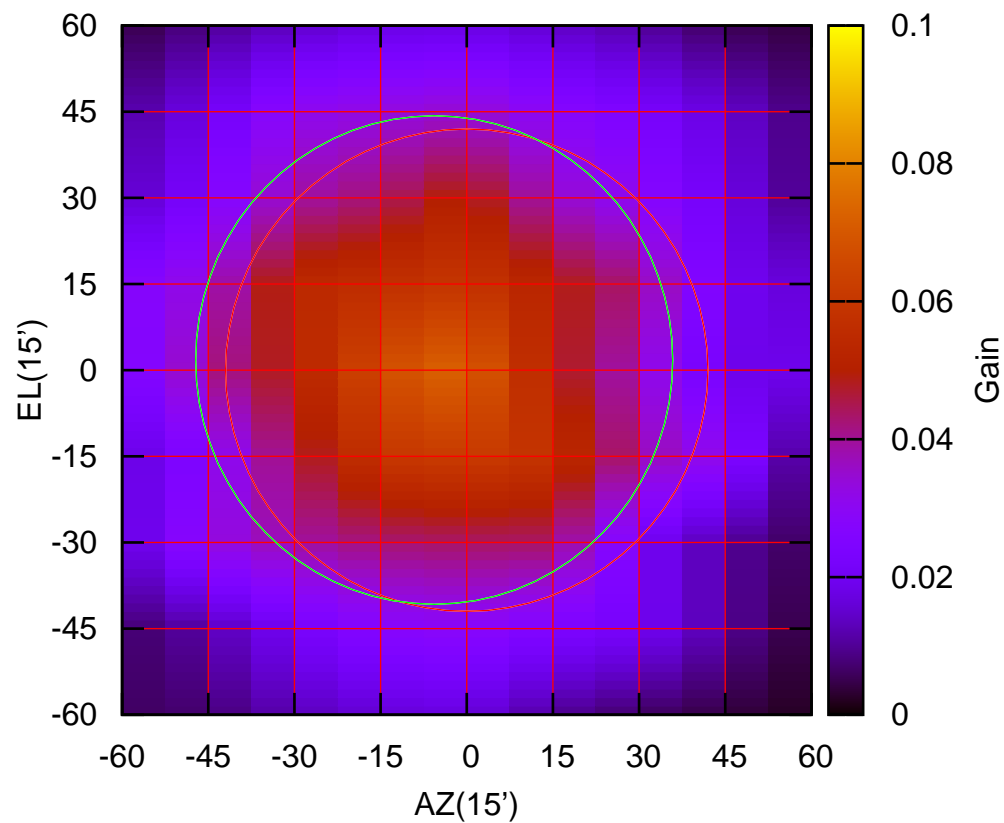
325 MHz.



S04-175 ELOFF= 6.4' ELBEAM= 85.0'

S06-130 AZOFF= -5.7' AZBEAM= 83.1'

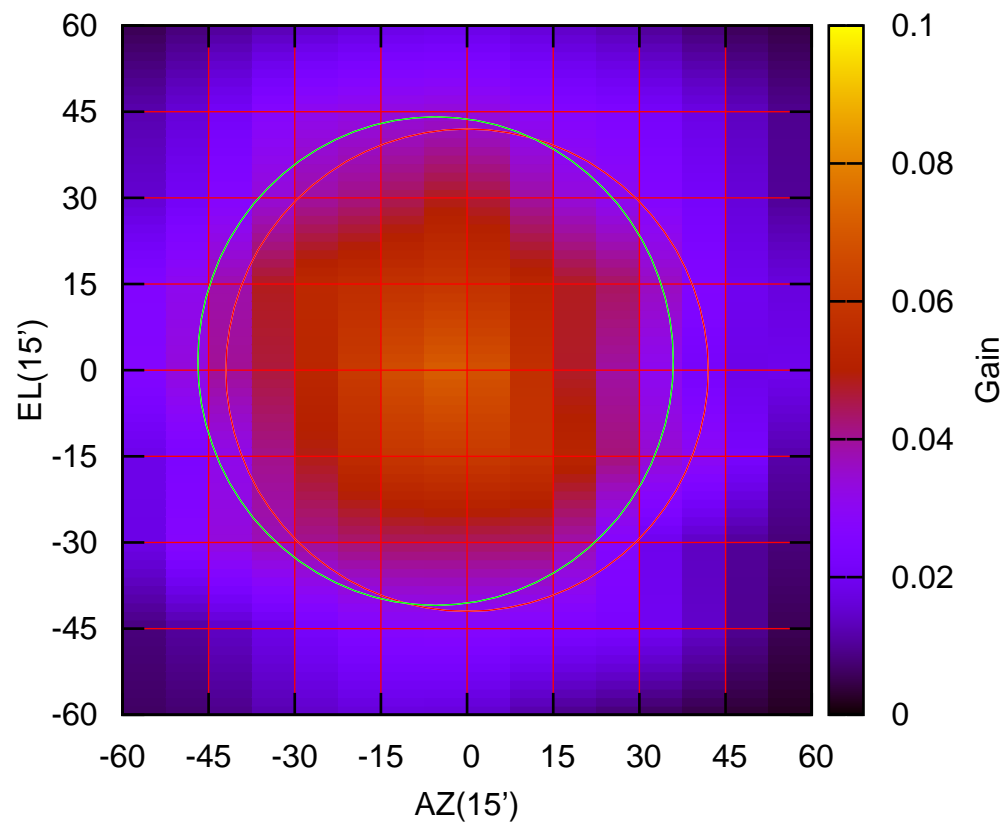
325 MHz.



S06-130 ELOFF= 1.8' ELBEAM= 85.1'

S06-175 AZOFF= -5.5' AZBEAM= 82.8'

325 MHz.



S06-175 ELOFF= 1.6' ELBEAM= 85.1'