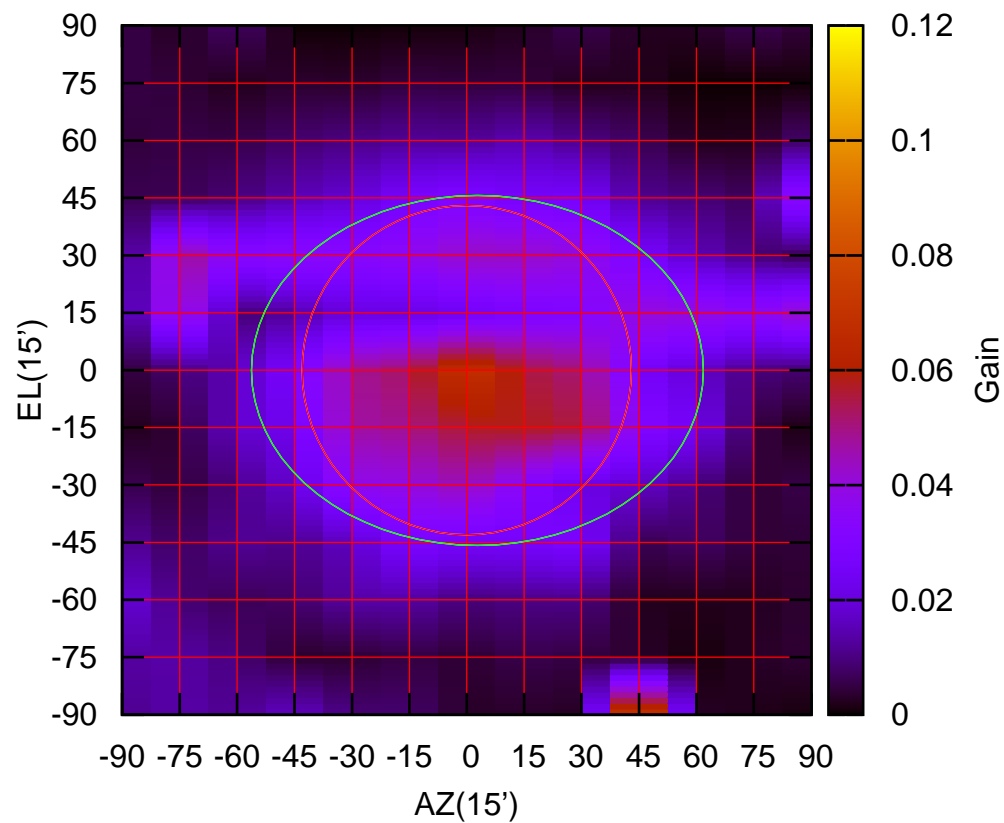


C00-130 AZOFF= 2.8' AZBEAM=118.1'

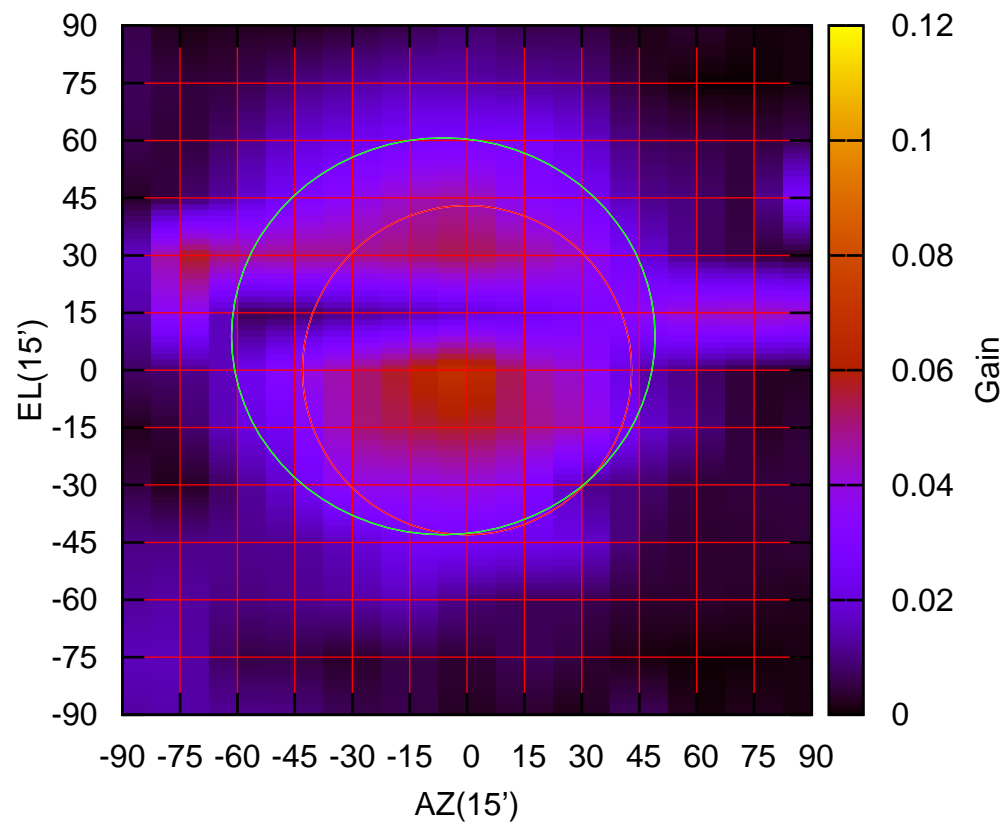
325 MHz.



C00-130 ELOFF= -0.1' ELBEAM= 91.5'

C00-175 AZOFF= -6.2' AZBEAM=110.7'

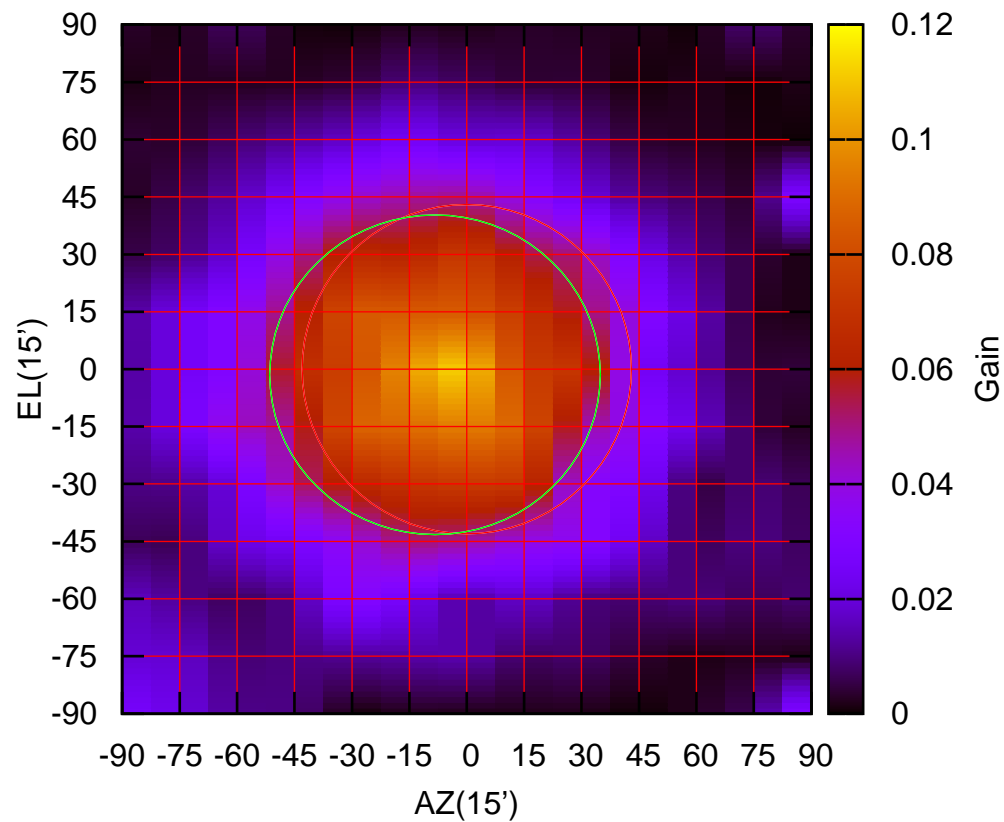
325 MHz.



C00-175 ELOFF= 8.9' ELBEAM=103.7'

C01-130 AZOFF= -8.3' AZBEAM= 86.4'

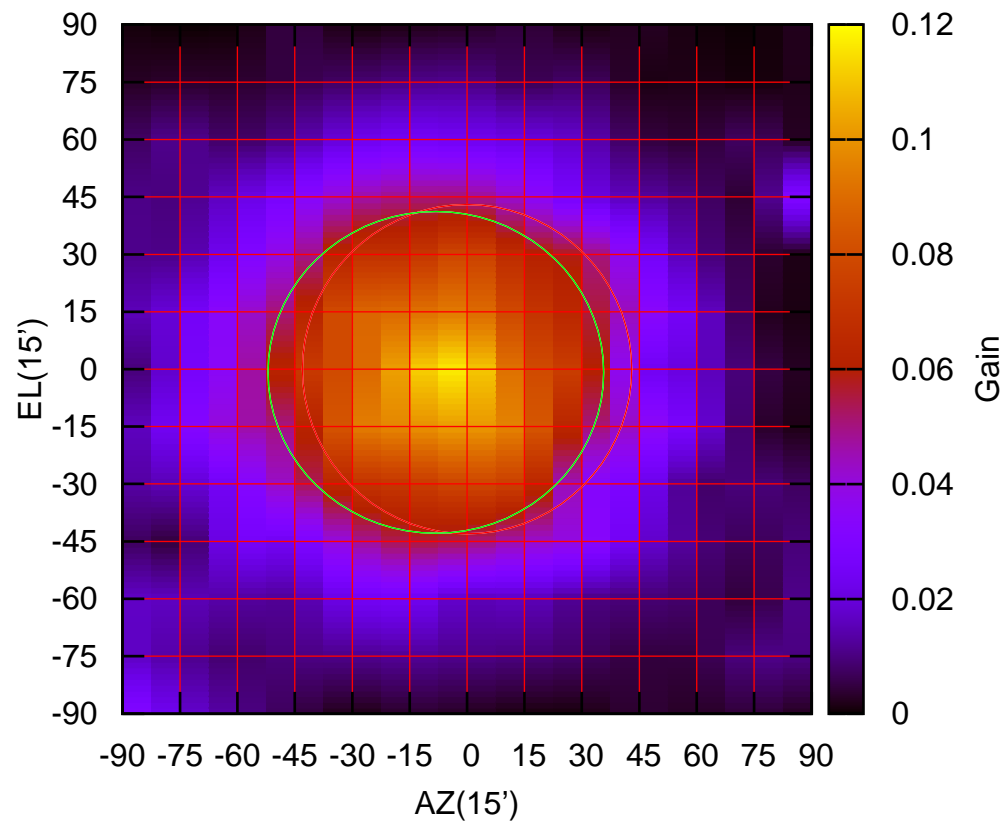
325 MHz.



C01-130 ELOFF= -1.5' ELBEAM= 83.5'

C01-175 AZOFF= -8.2' AZBEAM= 87.7'

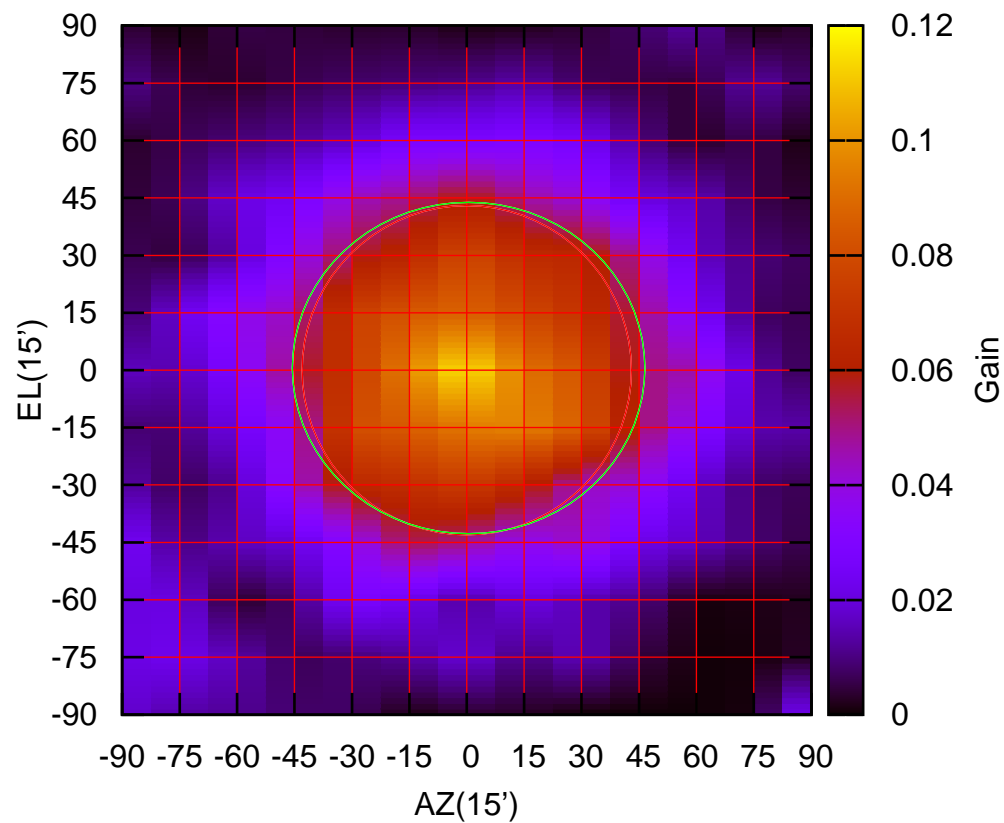
325 MHz.



C01-175 ELOFF= -0.9' ELBEAM= 84.1'

C02-130 AZOFF= 0.5' AZBEAM= 92.1'

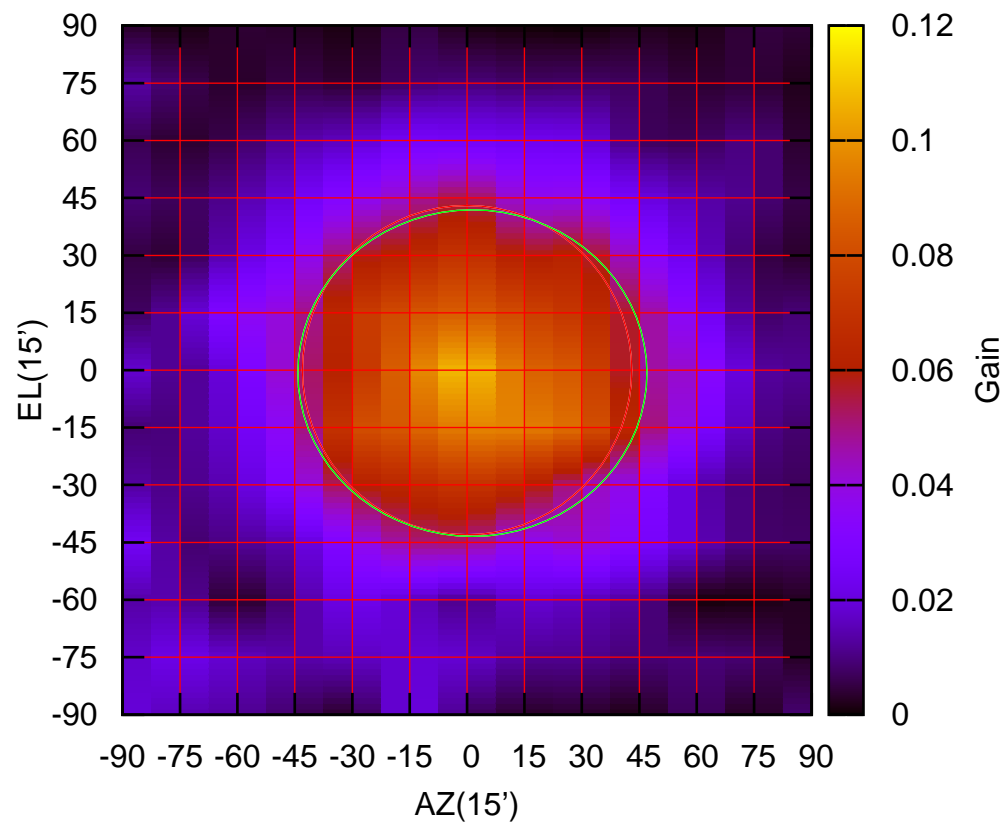
325 MHz.



C02-130 ELOFF= 0.6' ELBEAM= 86.6'

C02-175 AZOFF= 1.4' AZBEAM= 91.2'

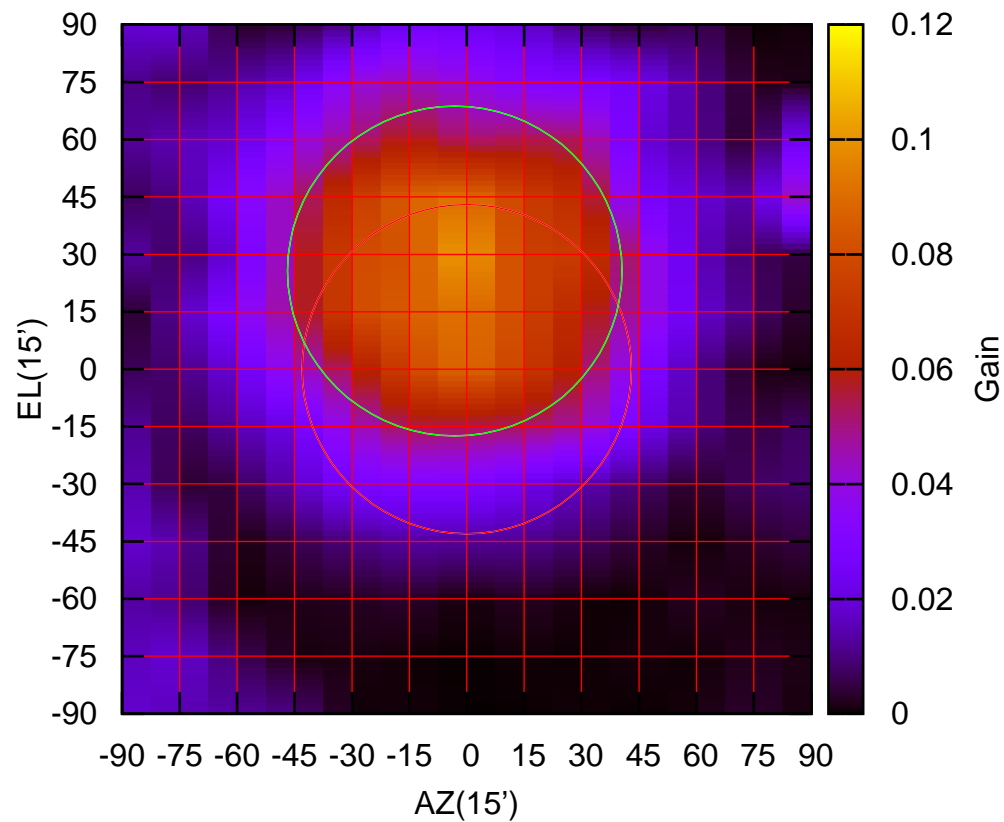
325 MHz.



C02-175 ELOFF= -0.8' ELBEAM= 85.3'

C03-130 AZOFF= -3.2' AZBEAM= 87.4'

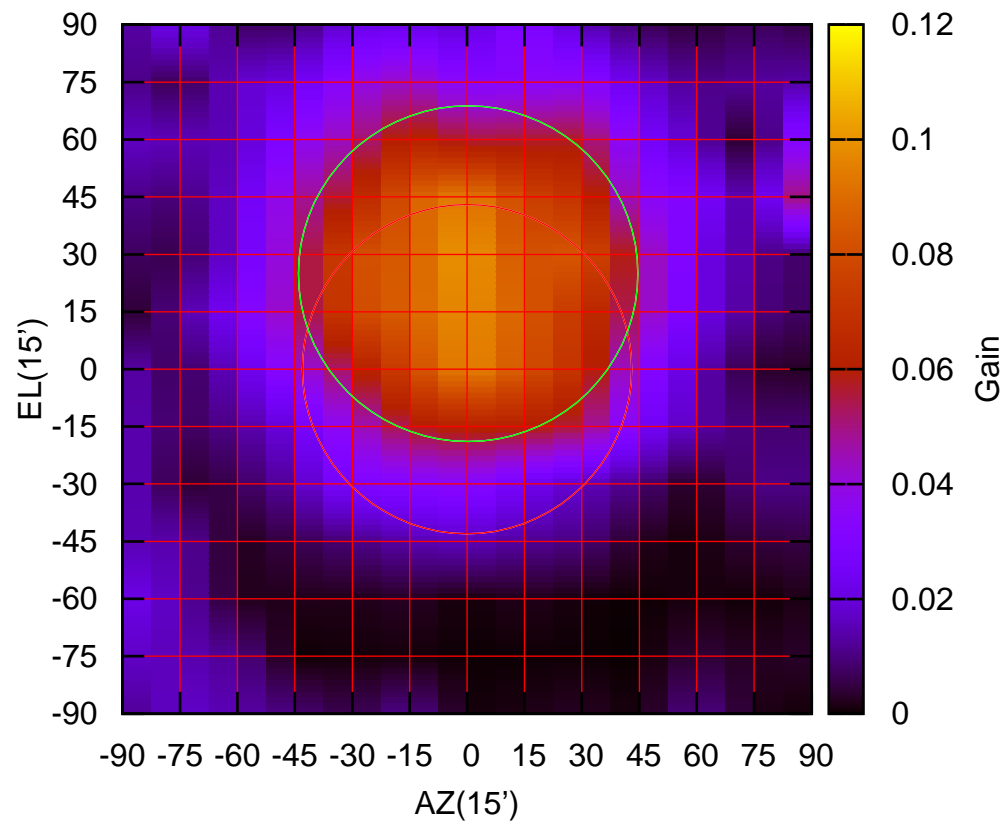
325 MHz.



C03-130 ELOFF= 25.7' ELBEAM= 86.2'

C03-175 AZOFF= 0.3' AZBEAM= 88.7'

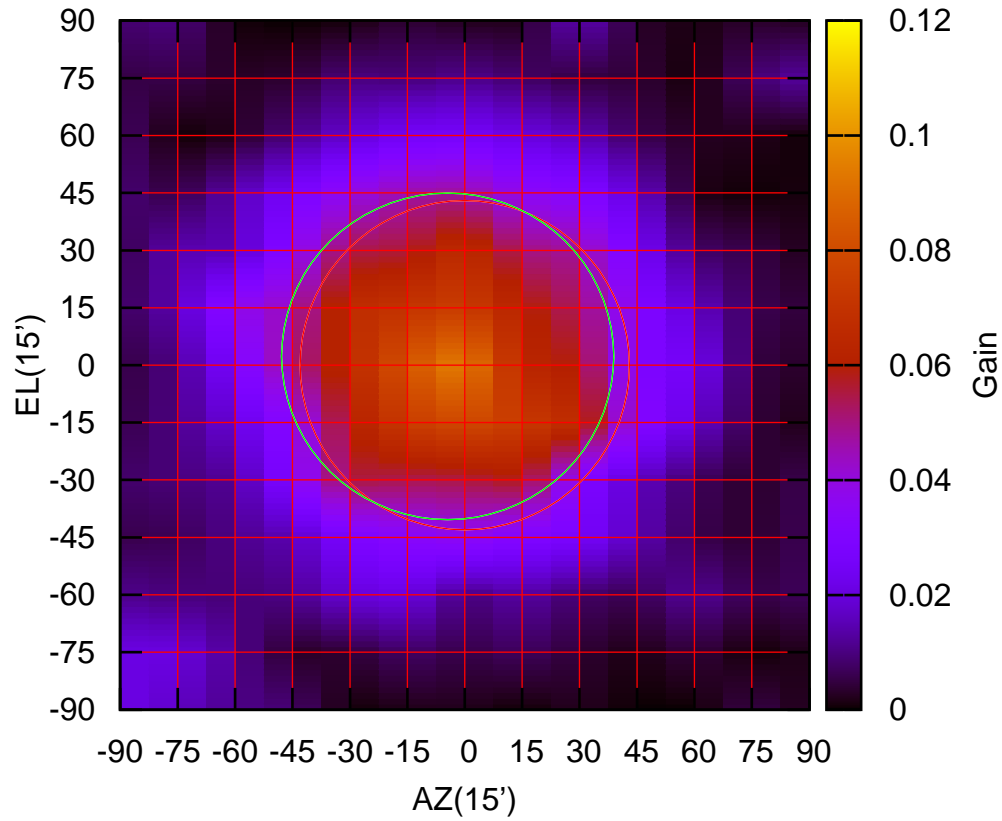
325 MHz.



C03-175 ELOFF= 25.0' ELBEAM= 87.7'

C04-130 AZOFF= -4.5' AZBEAM= 86.8'

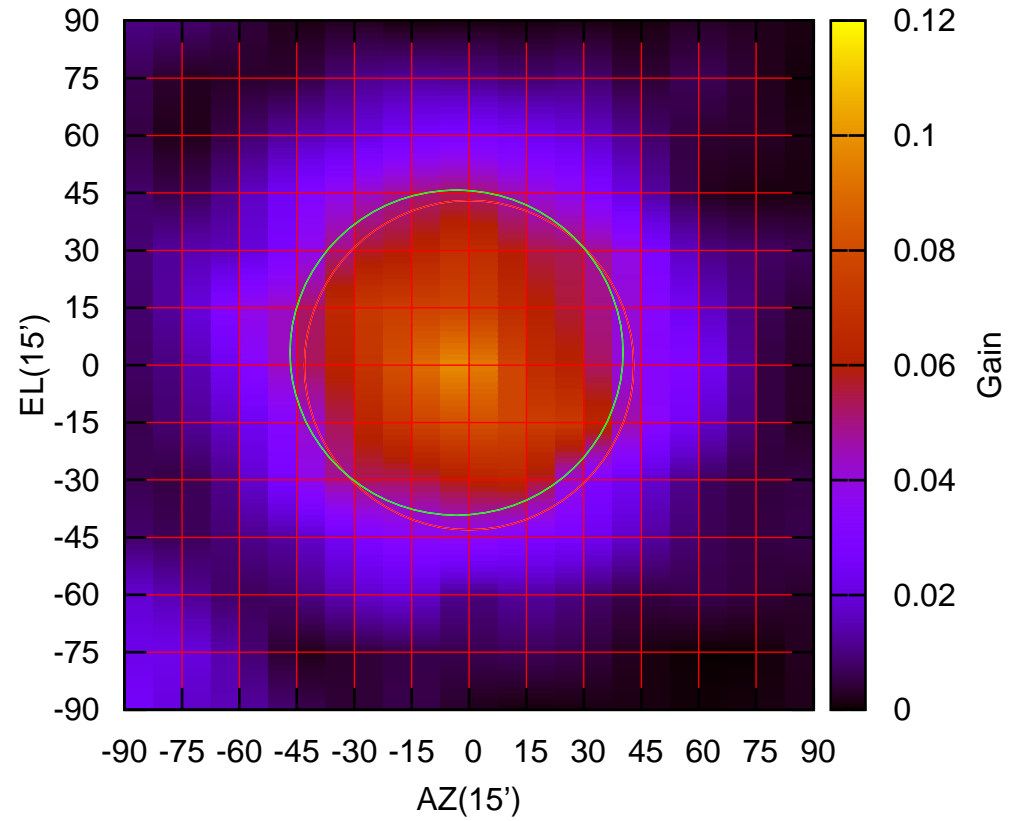
325 MHz.



C04-130 ELOFF= 2.3' ELBEAM= 85.3'

C04-175 AZOFF= -3.3' AZBEAM= 87.0'

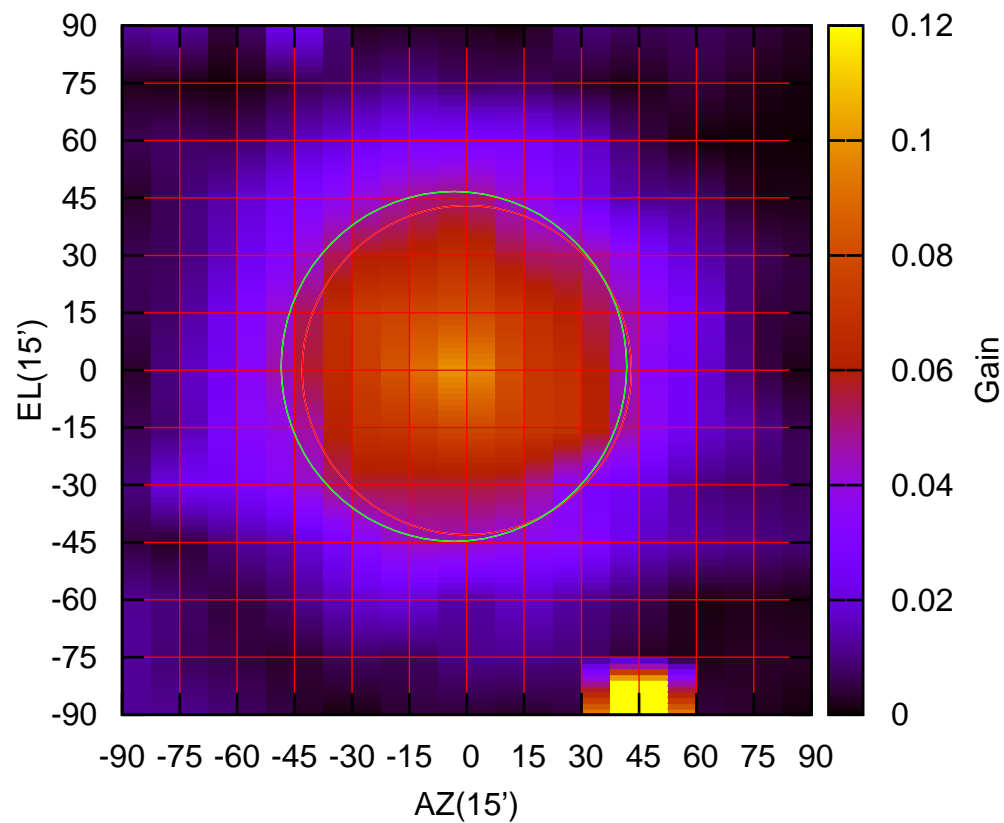
325 MHz.



C04-175 ELOFF= 3.3' ELBEAM= 85.0'

C05-130 AZOFF= -3.4' AZBEAM= 90.3'

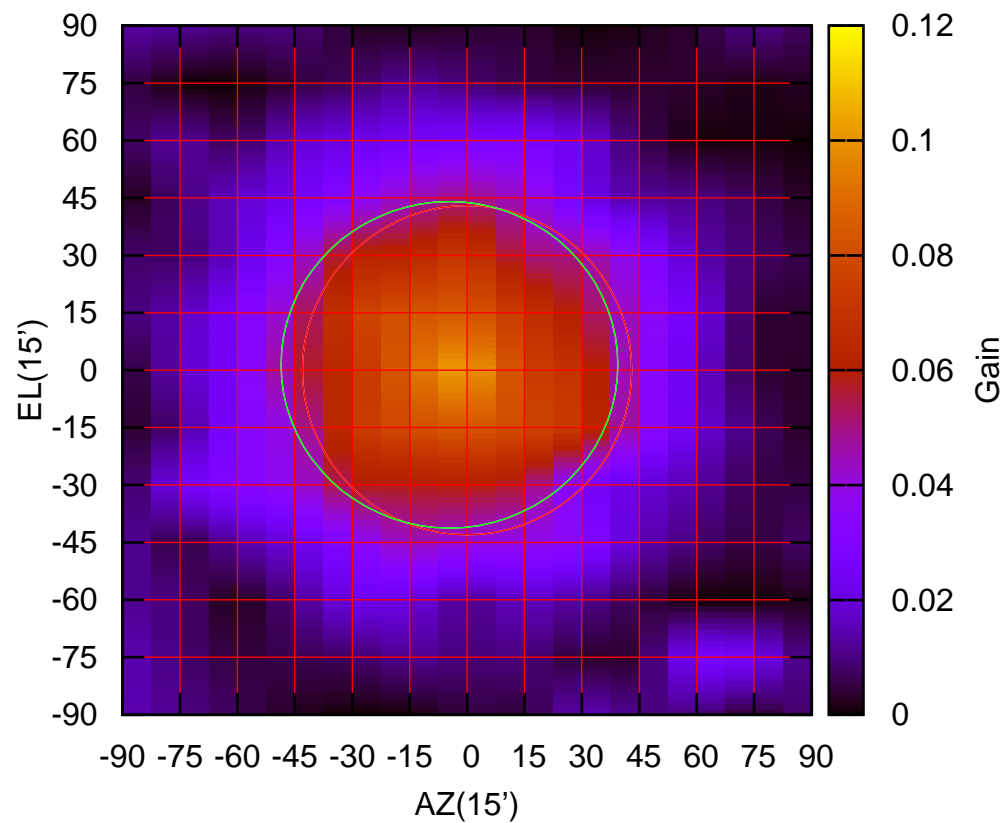
325 MHz.



C05-130 ELOFF= 1.0' ELBEAM= 91.4'

C05-175 AZOFF= -4.6' AZBEAM= 88.0'

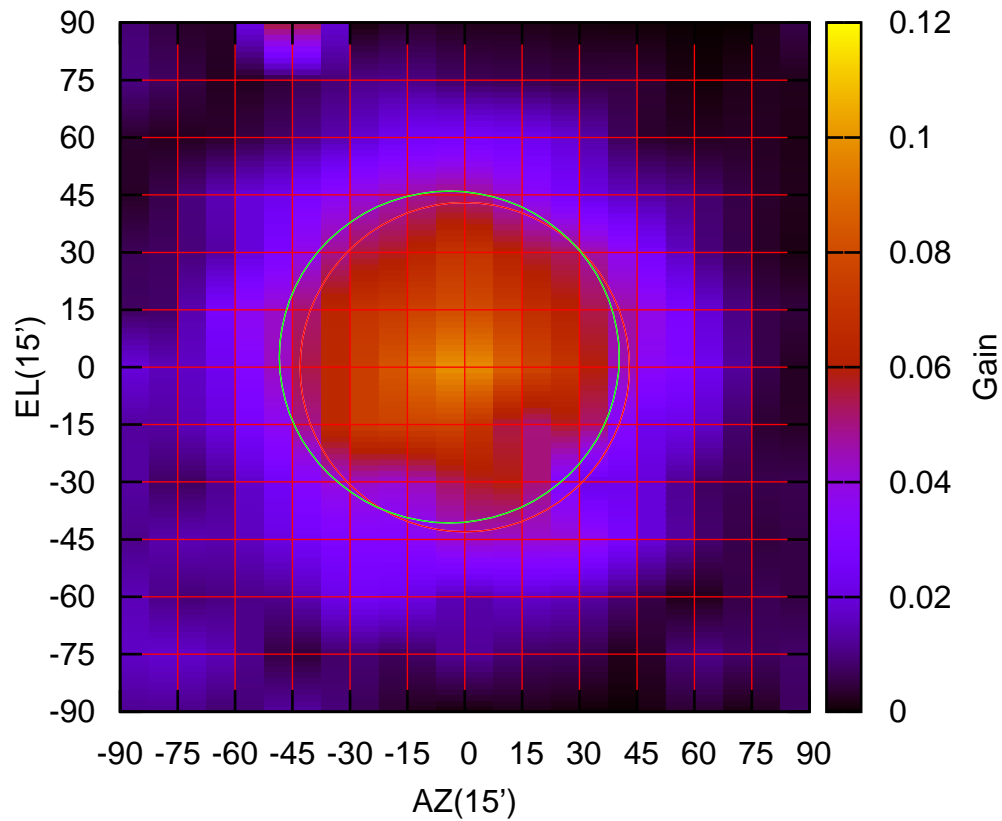
325 MHz.



C05-175 ELOFF= 1.4' ELBEAM= 85.3'

C06-130 AZOFF= -4.1' AZBEAM= 88.8'

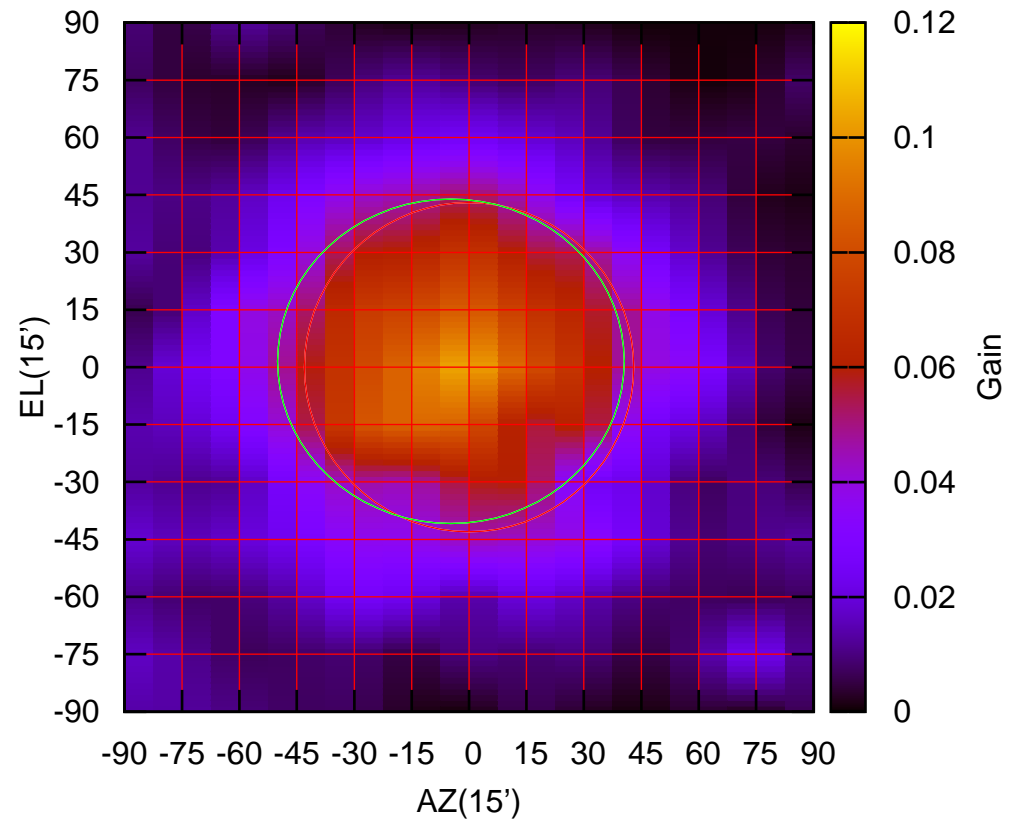
325 MHz.



C06-130 ELOFF= 2.7' ELBEAM= 86.7'

C06-175 AZOFF= -4.8' AZBEAM= 90.6'

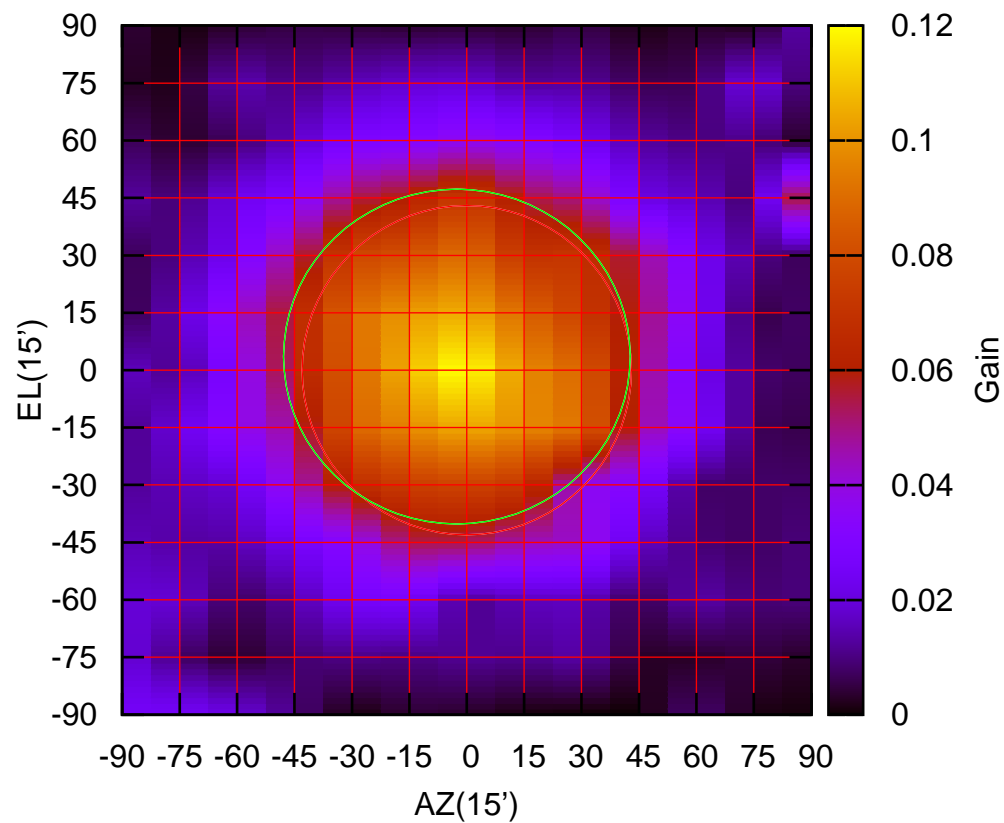
325 MHz.



C06-175 ELOFF= 1.6' ELBEAM= 84.8'

C08-130 AZOFF= -2.6' AZBEAM= 90.6'

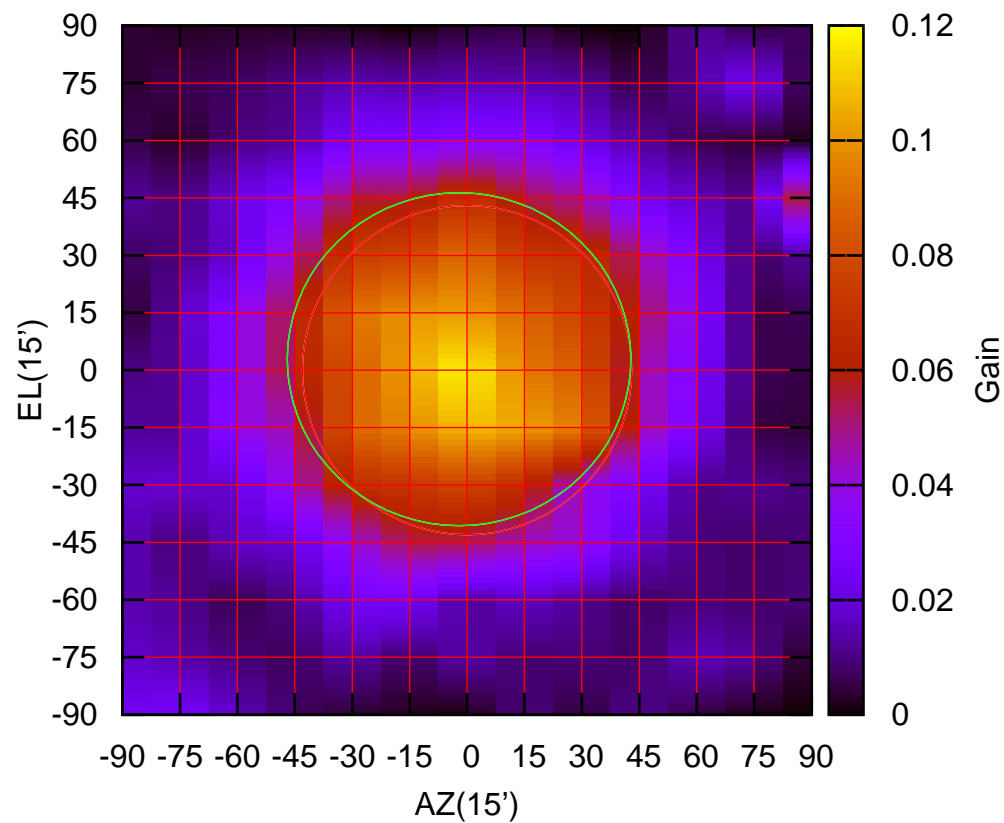
325 MHz.



C08-130 ELOFF= 3.6' ELBEAM= 87.5'

C08-175 AZOFF= -2.1' AZBEAM= 89.8'

325 MHz.

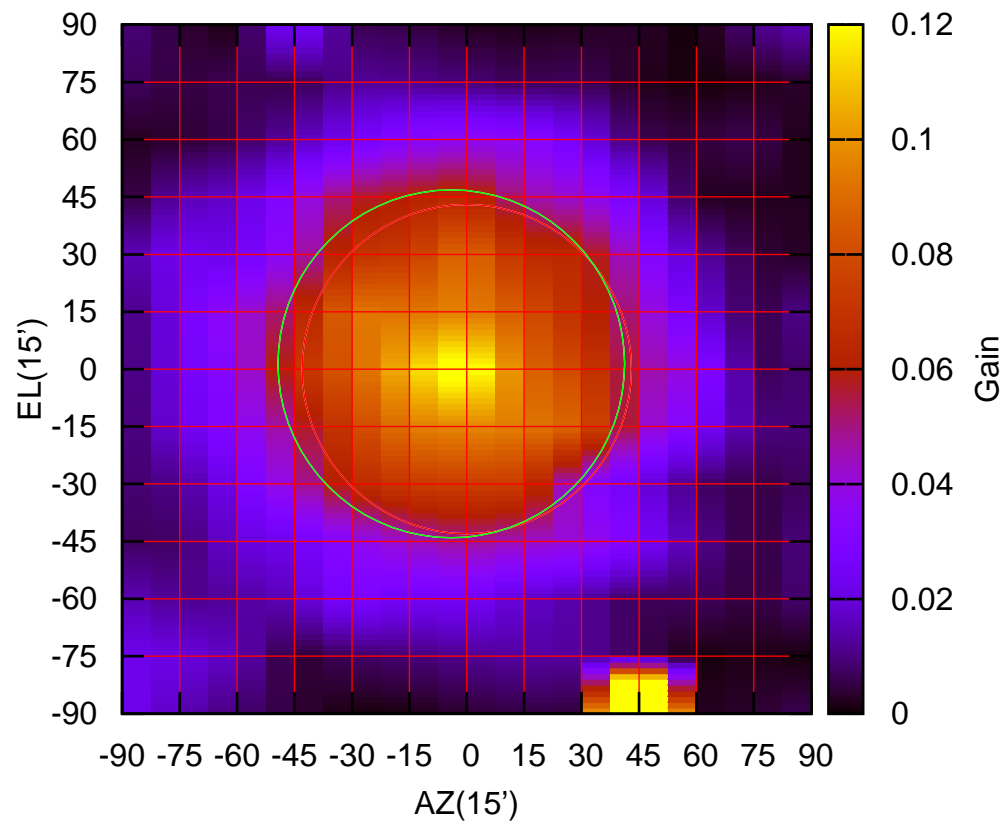


C08-175 ELOFF= 2.9' ELBEAM= 87.0'



C09-130 AZOFF= -4.1' AZBEAM= 90.6'

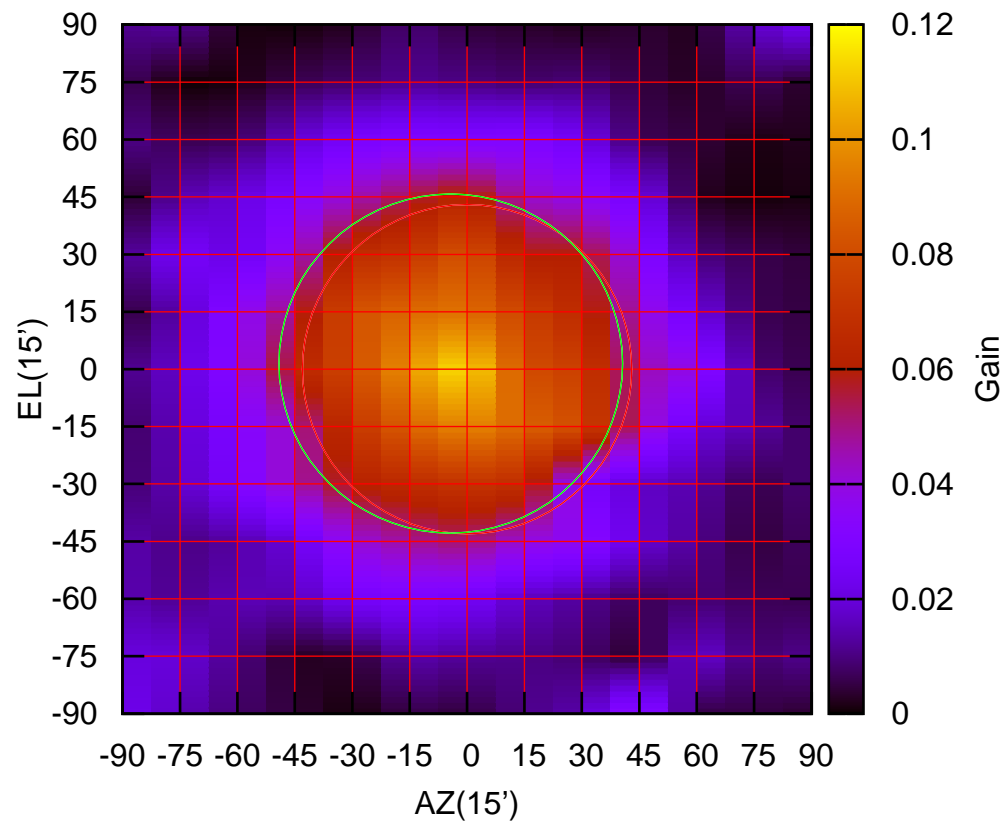
325 MHz.



C09-130 ELOFF= 1.4' ELBEAM= 90.9'

C09-175 AZOFF= -4.3' AZBEAM= 89.8'

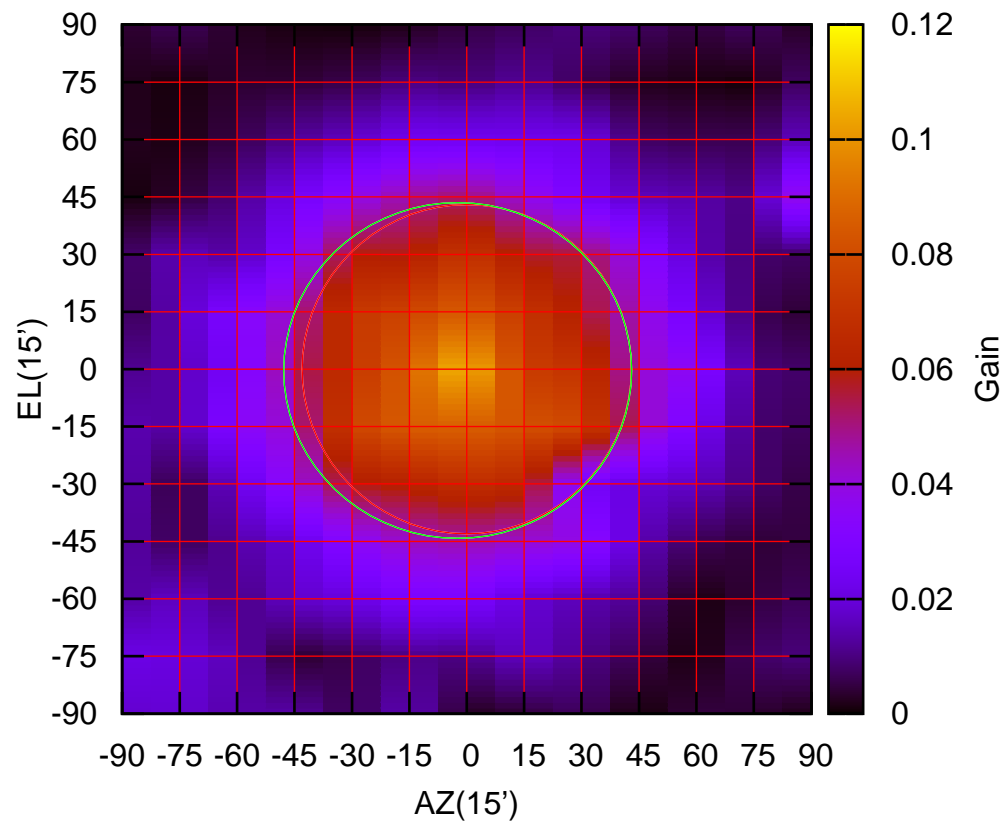
325 MHz.



C09-175 ELOFF= 1.5' ELBEAM= 88.6'

C10-130 AZOFF= -2.4' AZBEAM= 90.9'

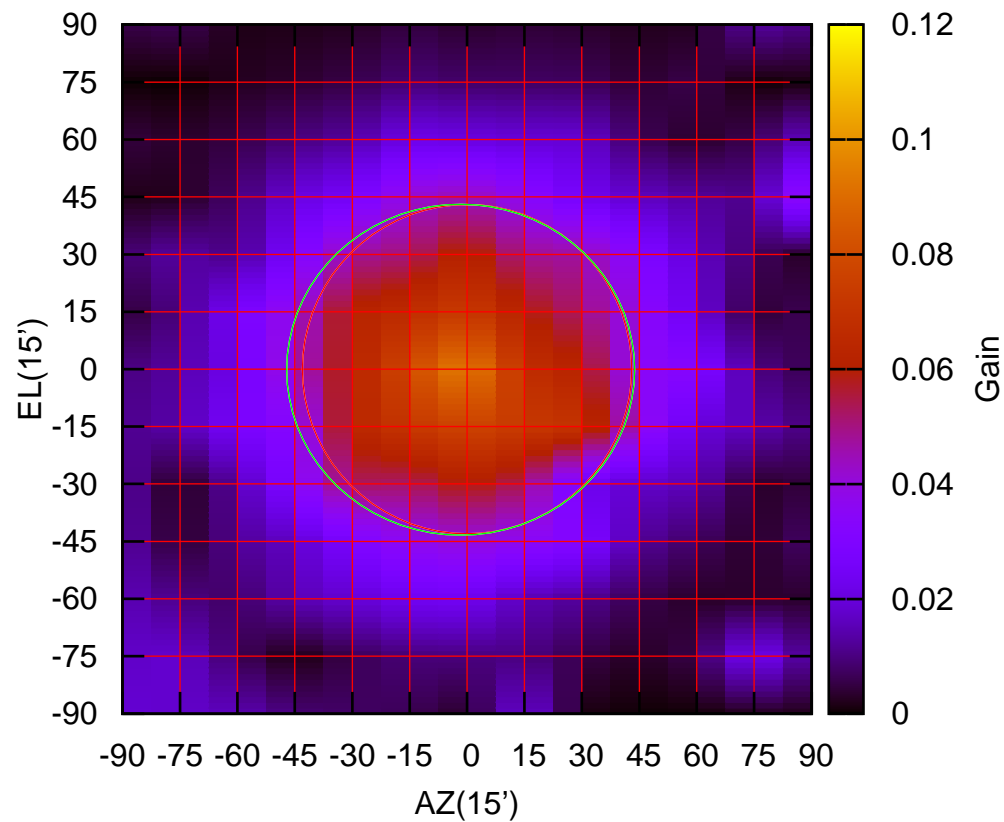
325 MHz.



C10-130 ELOFF= -0.4' ELBEAM= 87.7'

C10-175 AZOFF= -1.7' AZBEAM= 90.9'

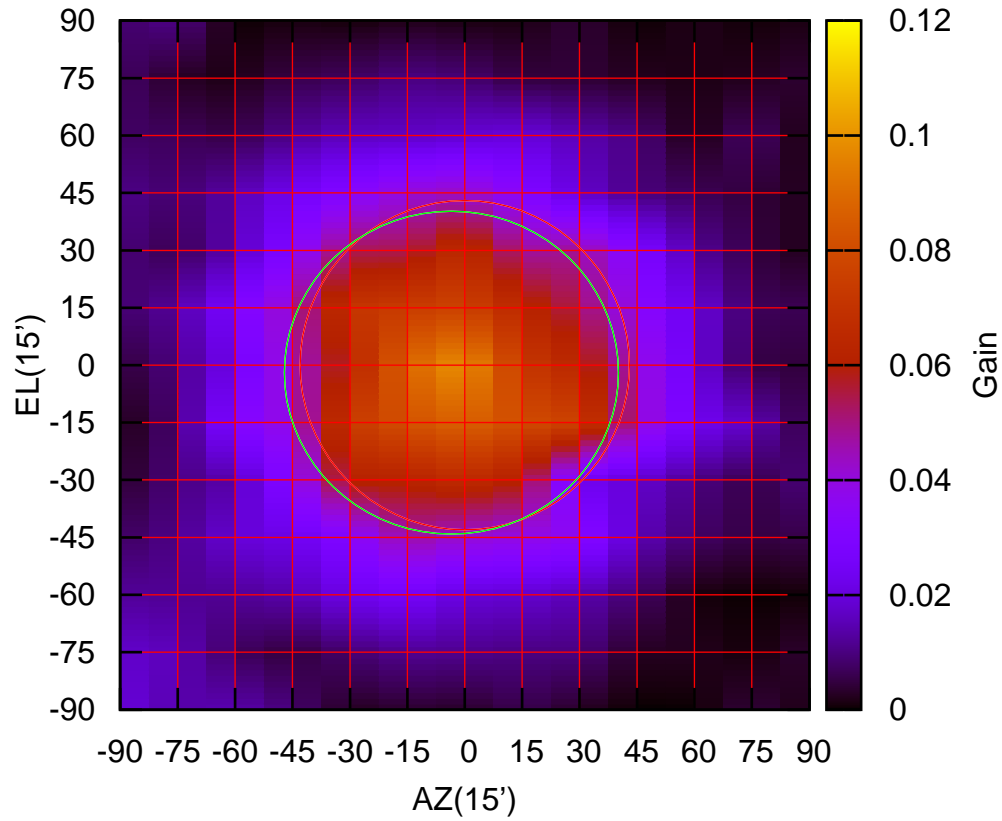
325 MHz.



C10-175 ELOFF= -0.2' ELBEAM= 86.5'

C11-130 AZOFF= -3.5' AZBEAM= 87.3'

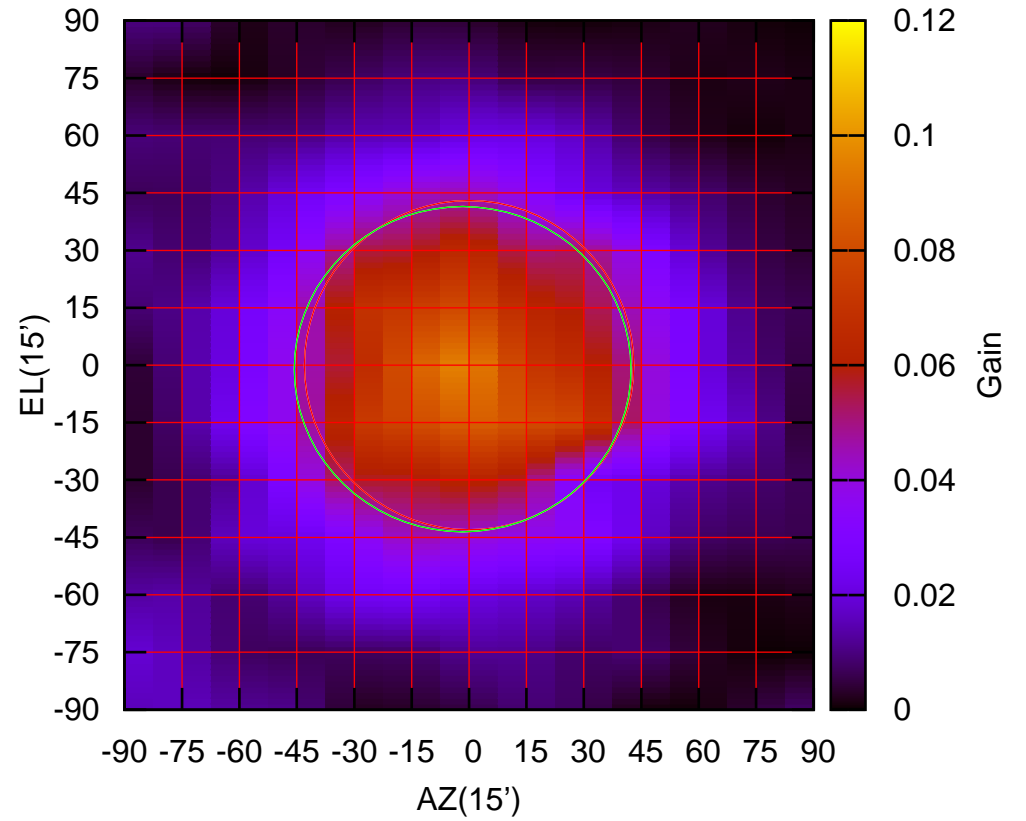
325 MHz.



C11-130 ELOFF= -2.0' ELBEAM= 84.4'

C11-175 AZOFF= -1.7' AZBEAM= 88.0'

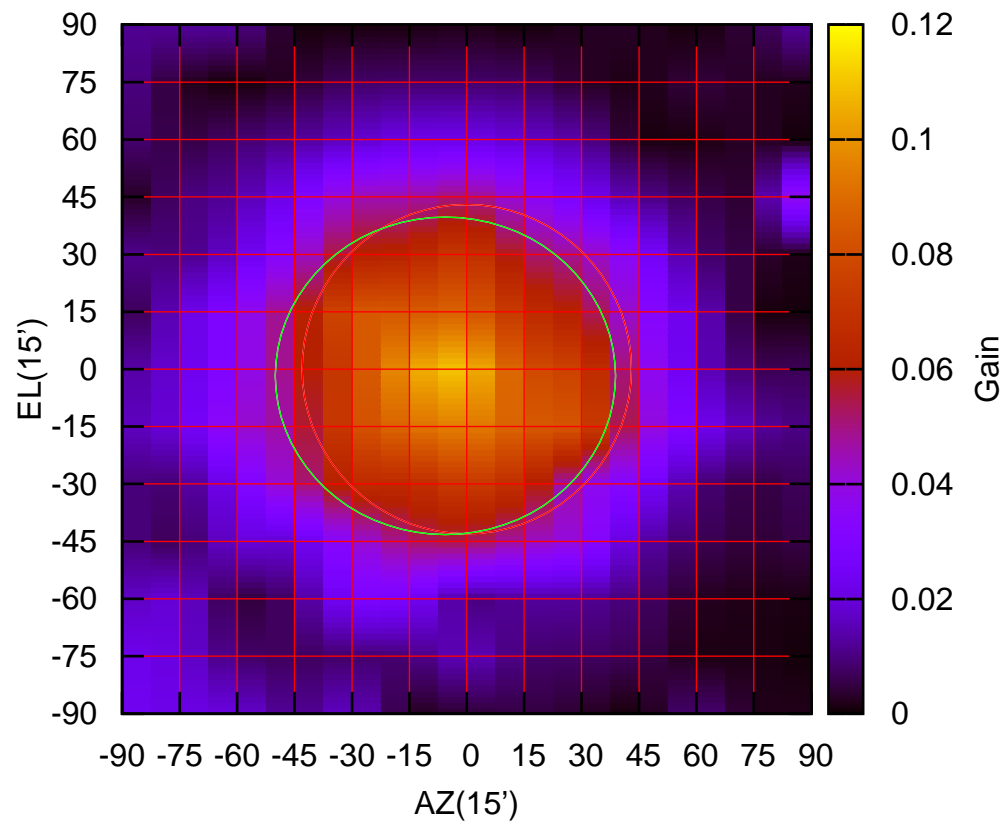
325 MHz.



C11-175 ELOFF= -1.1' ELBEAM= 85.0'

C12-130 AZOFF= -5.6' AZBEAM= 88.9'

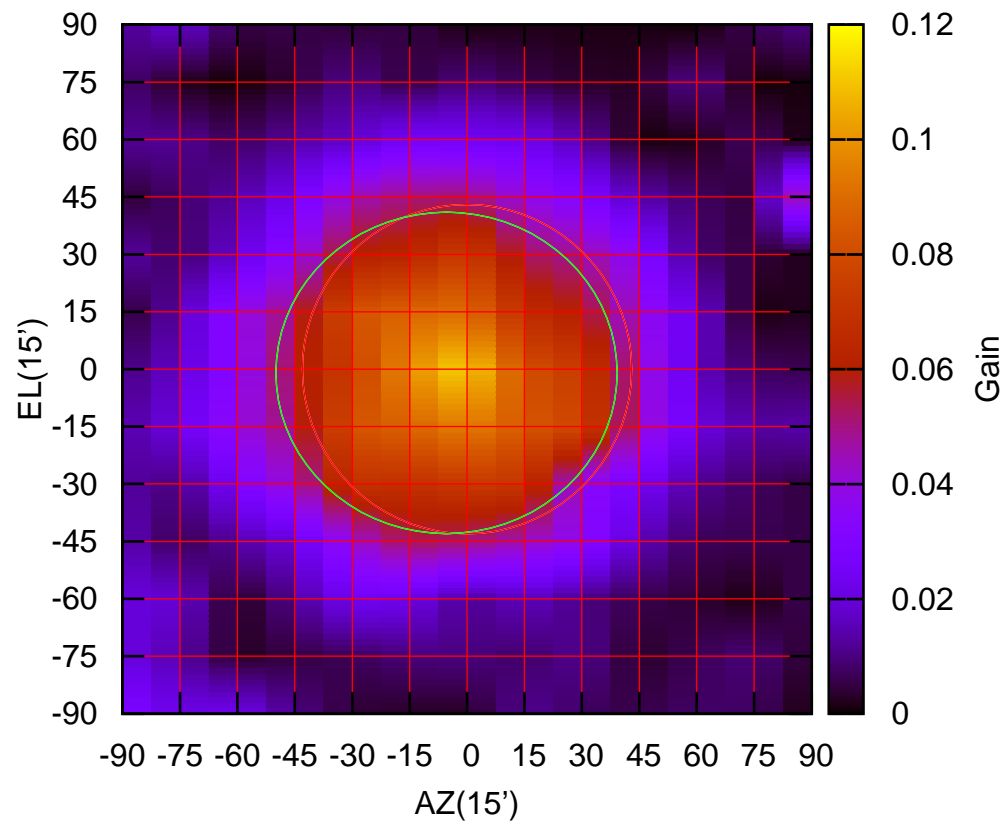
325 MHz.



C12-130 ELOFF= -1.8' ELBEAM= 83.0'

C12-175 AZOFF= -5.4' AZBEAM= 89.2'

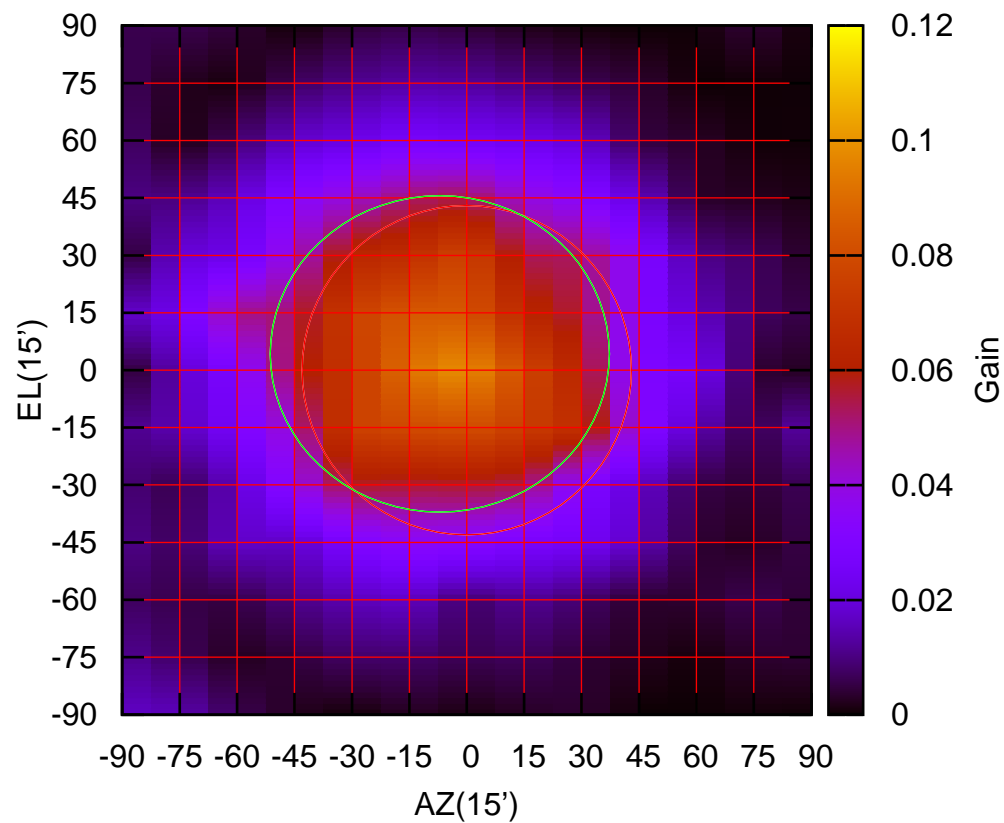
325 MHz.



C12-175 ELOFF= -1.0' ELBEAM= 84.0'

C13-130 AZOFF= -7.1' AZBEAM= 88.6'

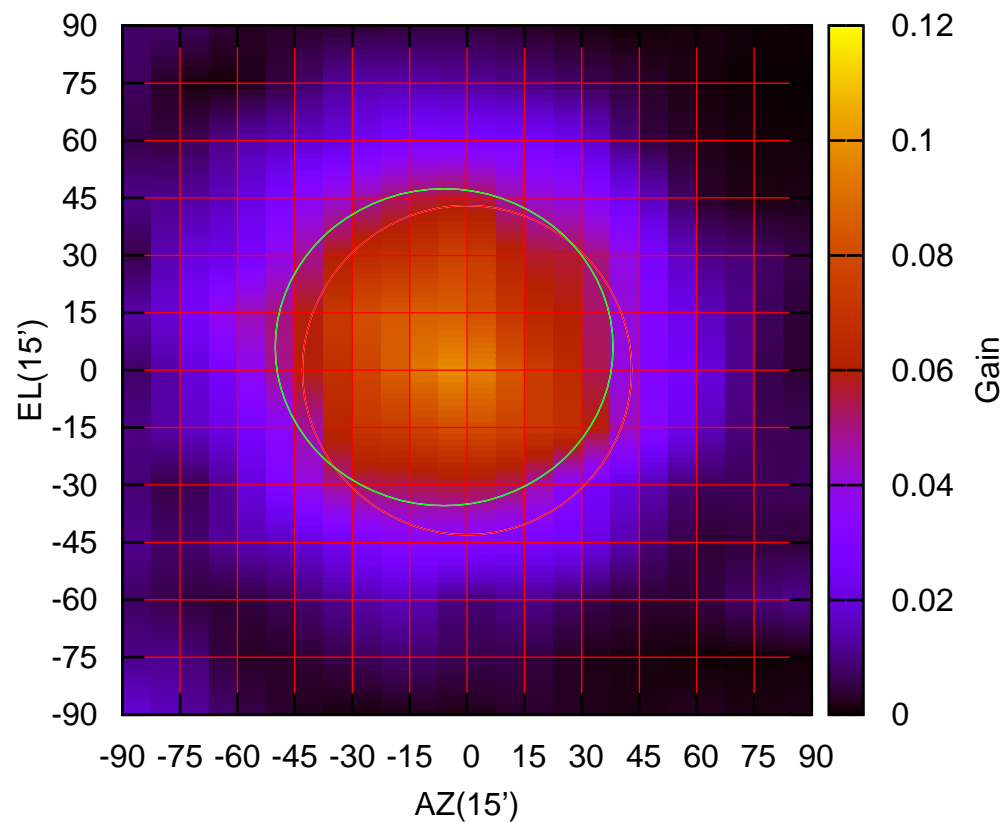
325 MHz.



C13-130 ELOFF= 4.3' ELBEAM= 82.7'

C13-175 AZOFF= -6.0' AZBEAM= 88.3'

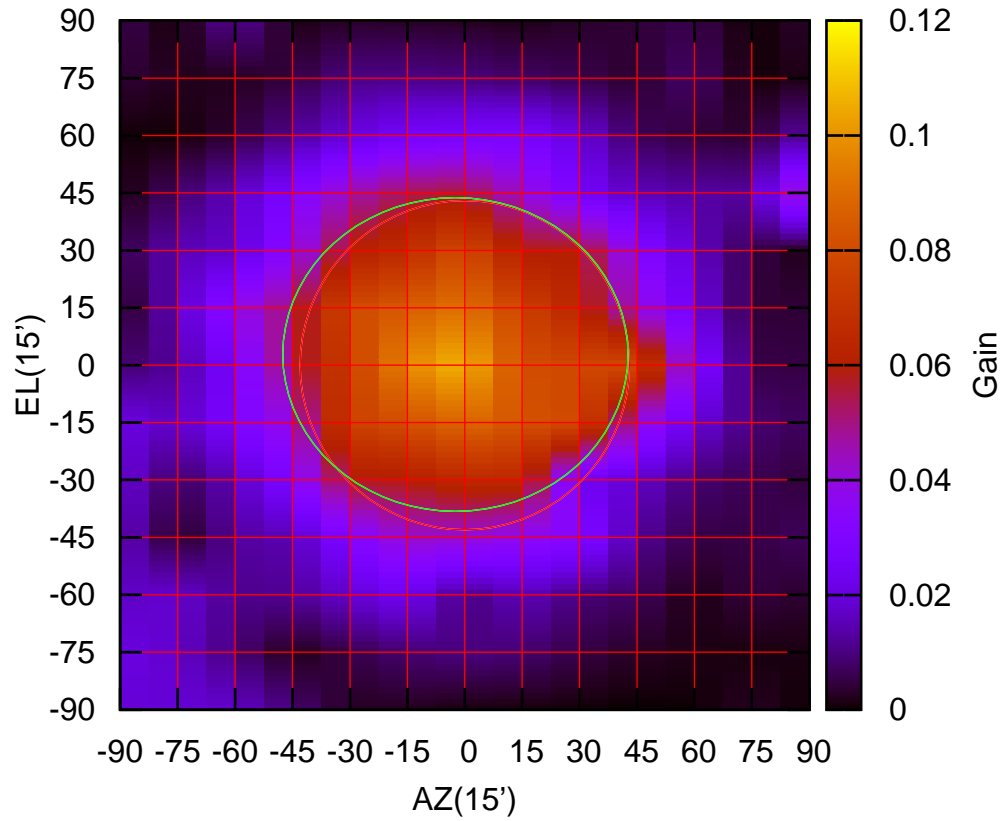
325 MHz.



C13-175 ELOFF= 6.0' ELBEAM= 82.8'

C14-130 AZOFF= -2.5' AZBEAM= 90.2'

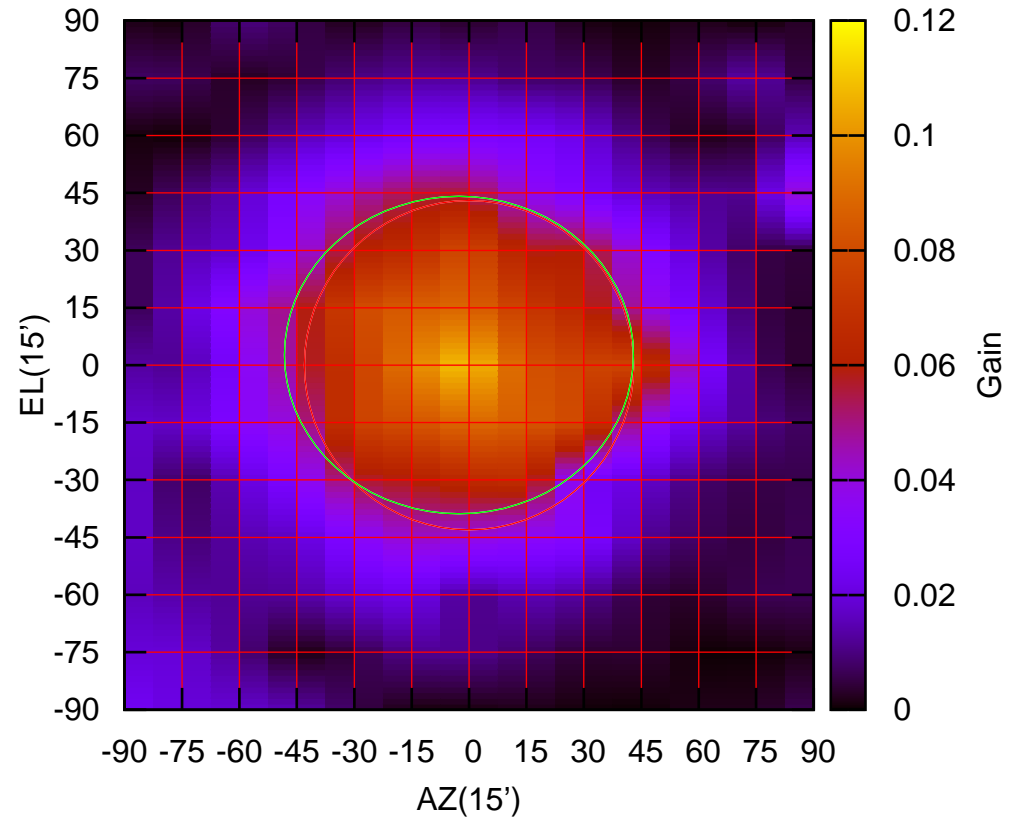
325 MHz.



C14-130 ELOFF= 2.8' ELBEAM= 82.0'

C14-175 AZOFF= -2.7' AZBEAM= 91.2'

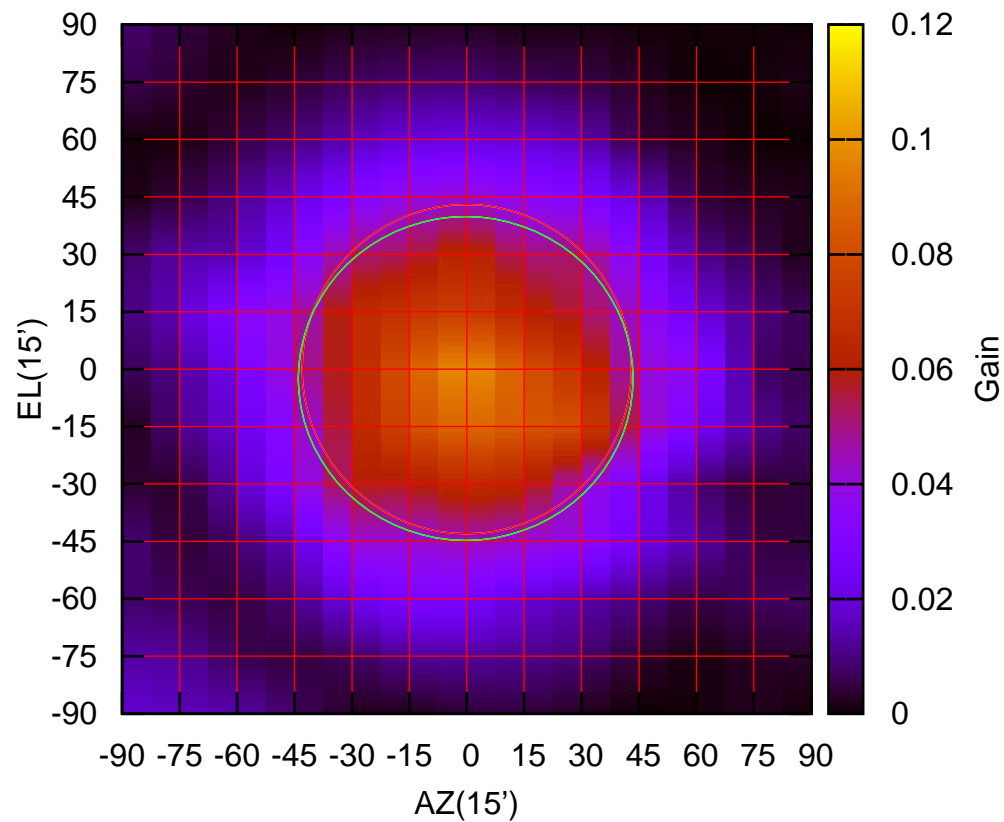
325 MHz.



C14-175 ELOFF= 2.7' ELBEAM= 83.0'

W01-130 AZOFF= -0.3' AZBEAM= 87.5'

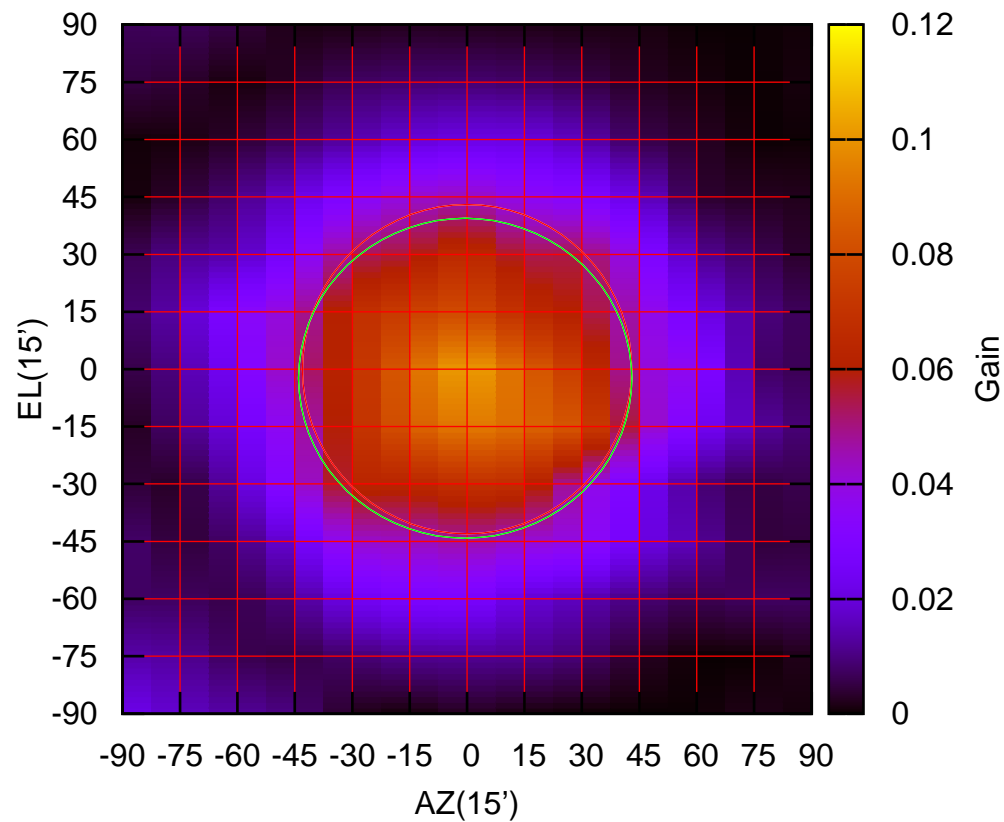
325 MHz.



W01-130 ELOFF= -2.5' ELBEAM= 84.6'

W01-175 AZOFF= -0.5' AZBEAM= 87.1'

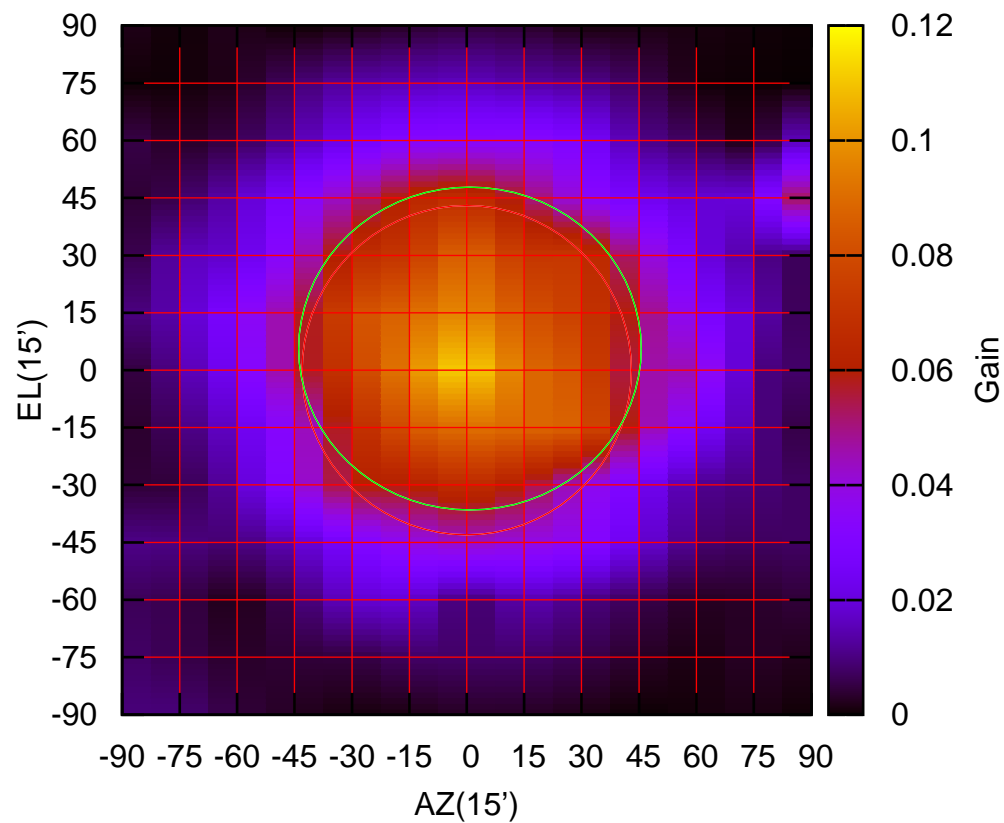
325 MHz.



W01-175 ELOFF= -2.4' ELBEAM= 83.6'

W02-130 AZOFF= 0.9' AZBEAM= 89.5'

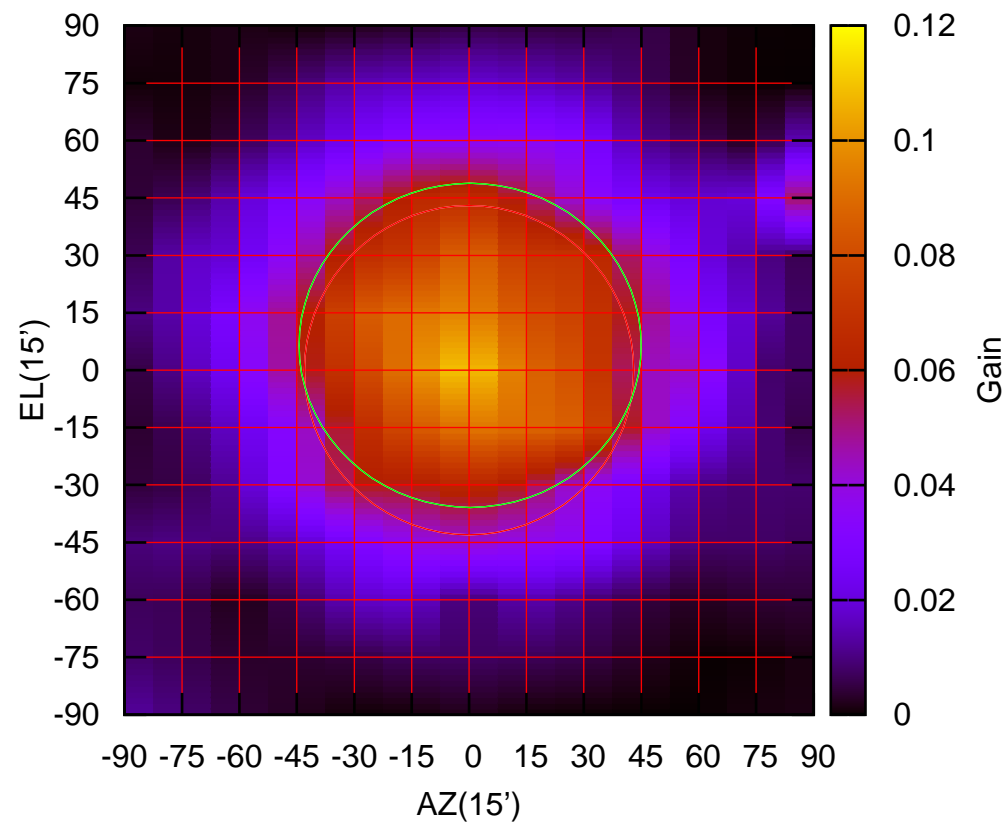
325 MHz.



W02-130 ELOFF= 5.7' ELBEAM= 84.4'

W02-175 AZOFF= 0.3' AZBEAM= 89.4'

325 MHz.

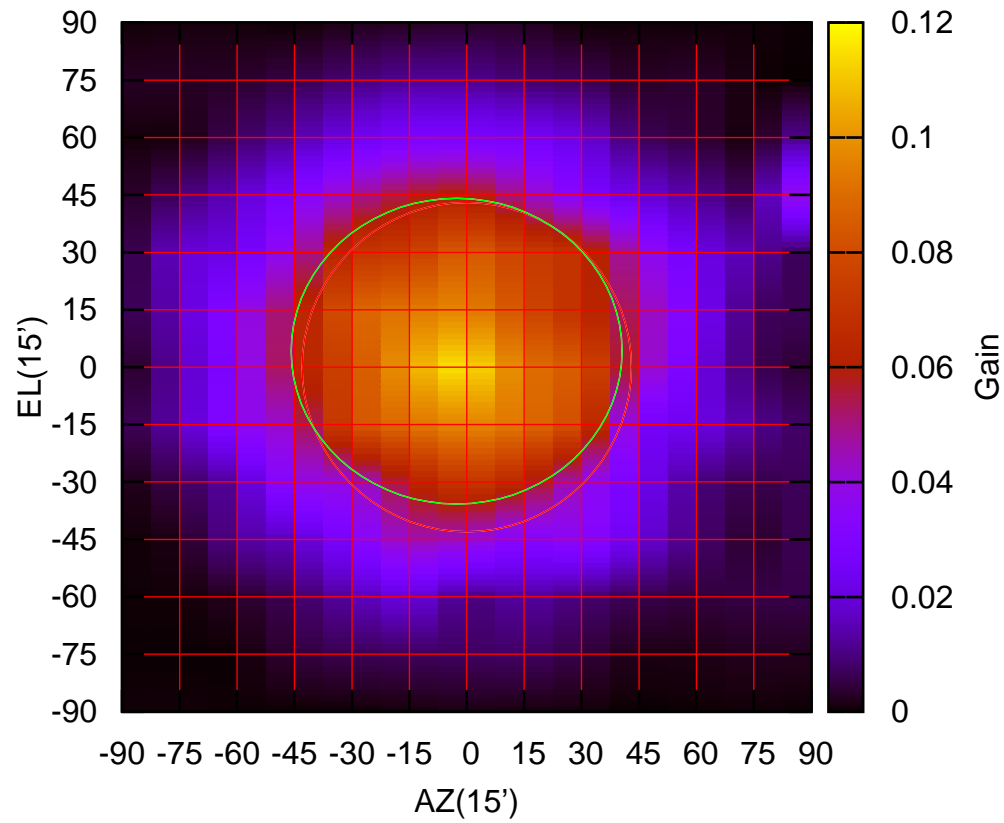


W02-175 ELOFF= 6.5' ELBEAM= 84.7'



W03-130 AZOFF= -2.7' AZBEAM= 86.5'

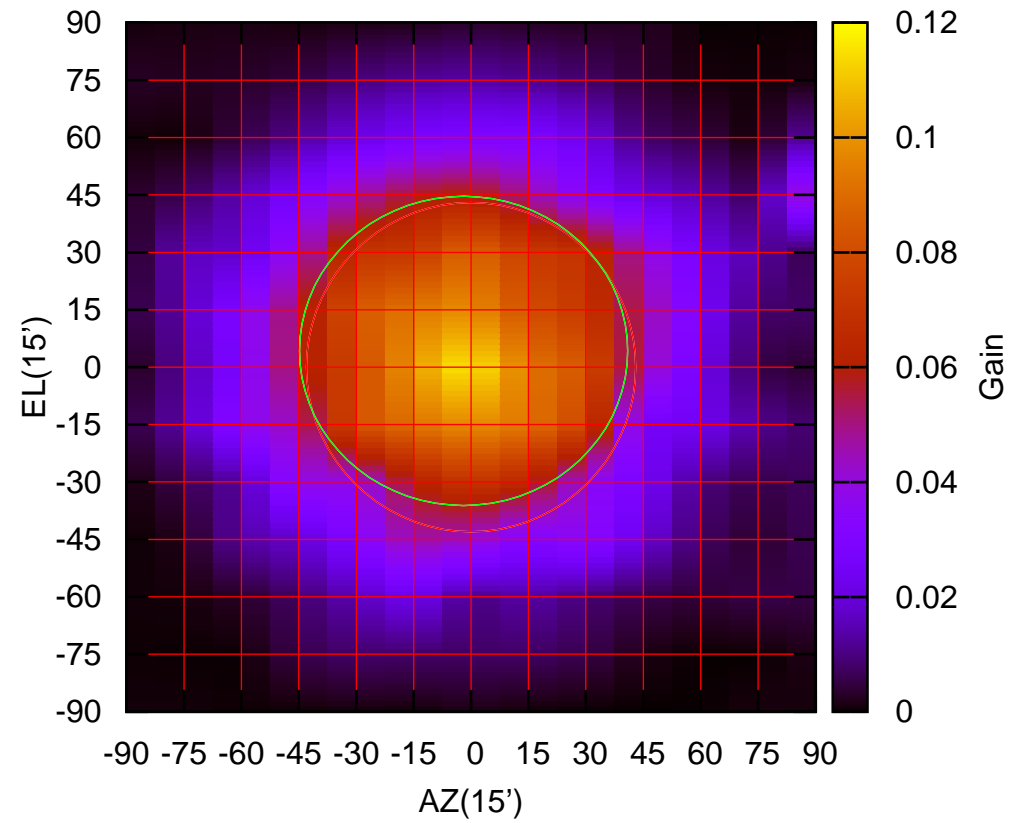
325 MHz.



W03-130 ELOFF= 4.2' ELBEAM= 79.9'

W03-175 AZOFF= -2.0' AZBEAM= 85.8'

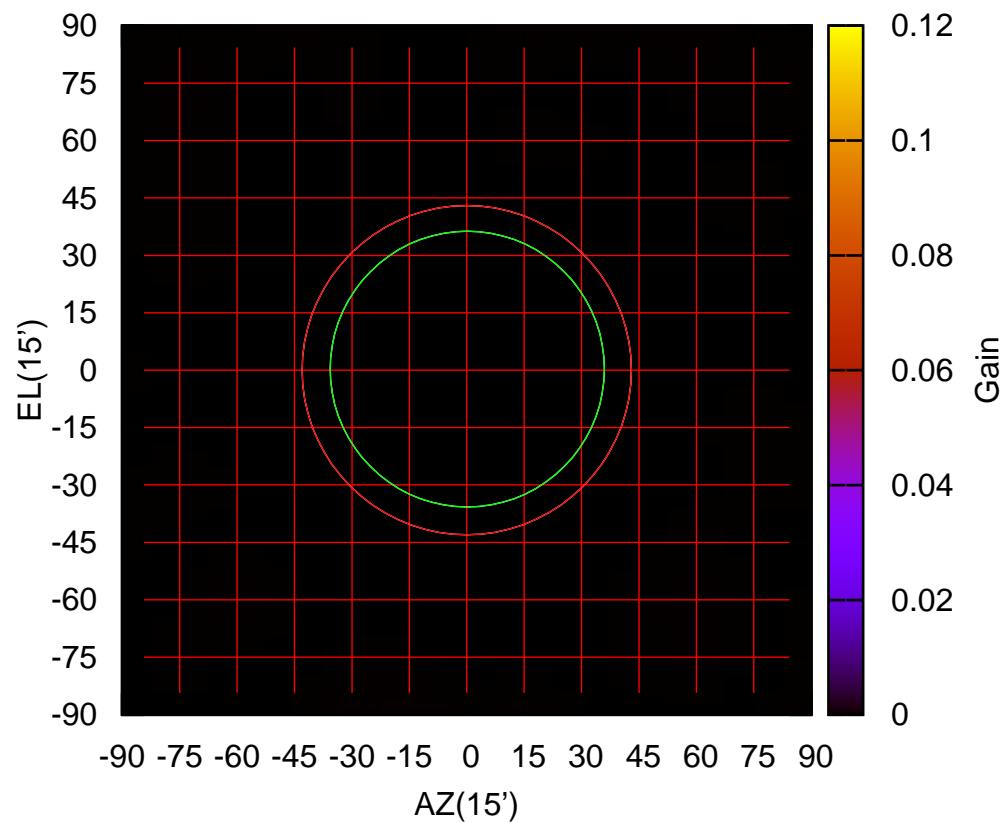
325 MHz.



W03-175 ELOFF= 4.3' ELBEAM= 80.8'

W04-130 AZOFF= 0.2' AZBEAM= 71.7'

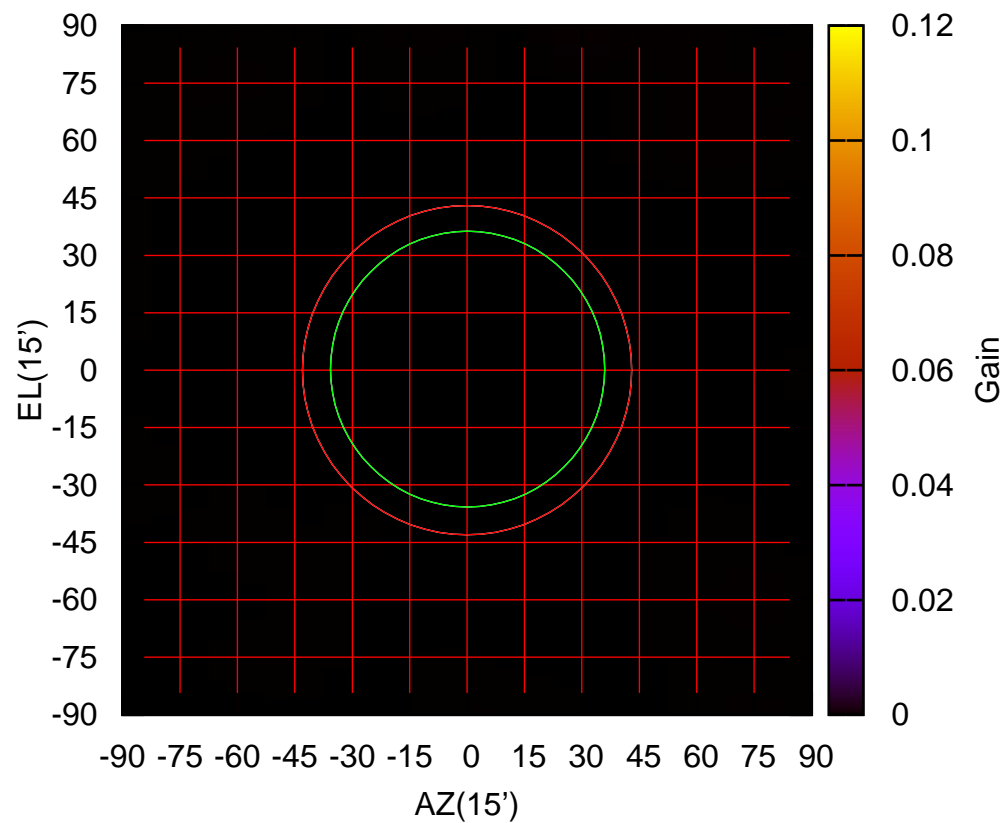
325 MHz.



W04-130 ELOFF= 0.3' ELBEAM= 72.1'

W04-175 AZOFF= 0.2' AZBEAM= 71.7'

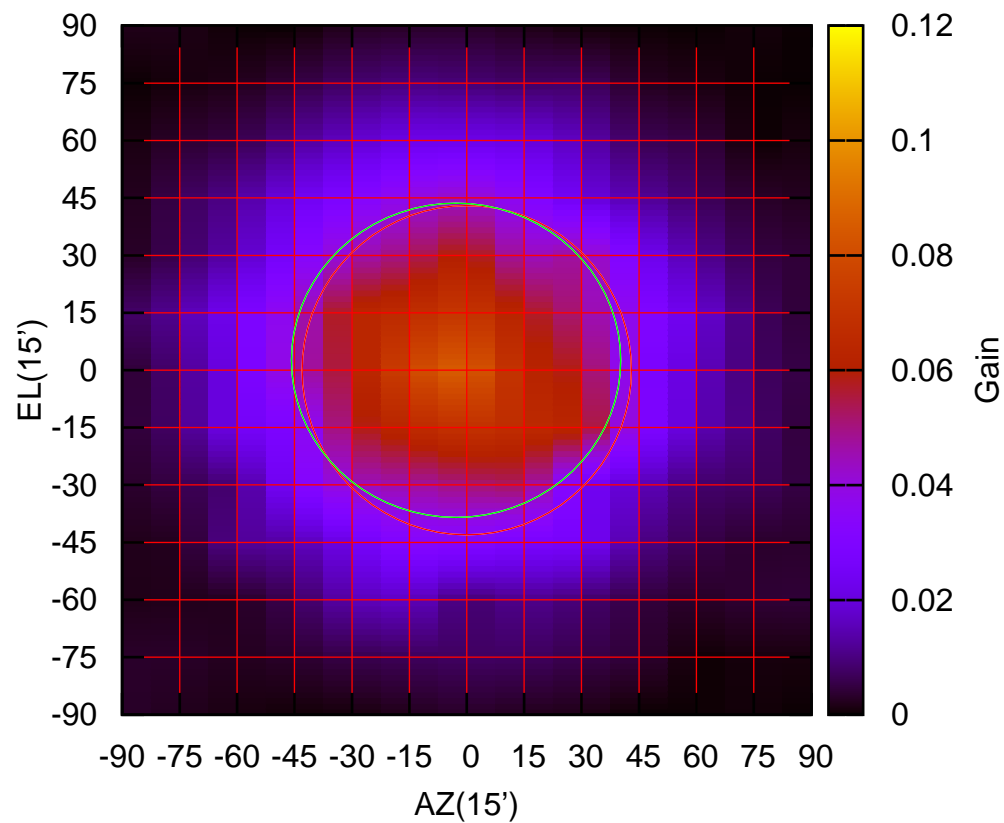
325 MHz.



W04-175 ELOFF= 0.3' ELBEAM= 72.1'

W05-130 AZOFF= -2.8' AZBEAM= 86.0'

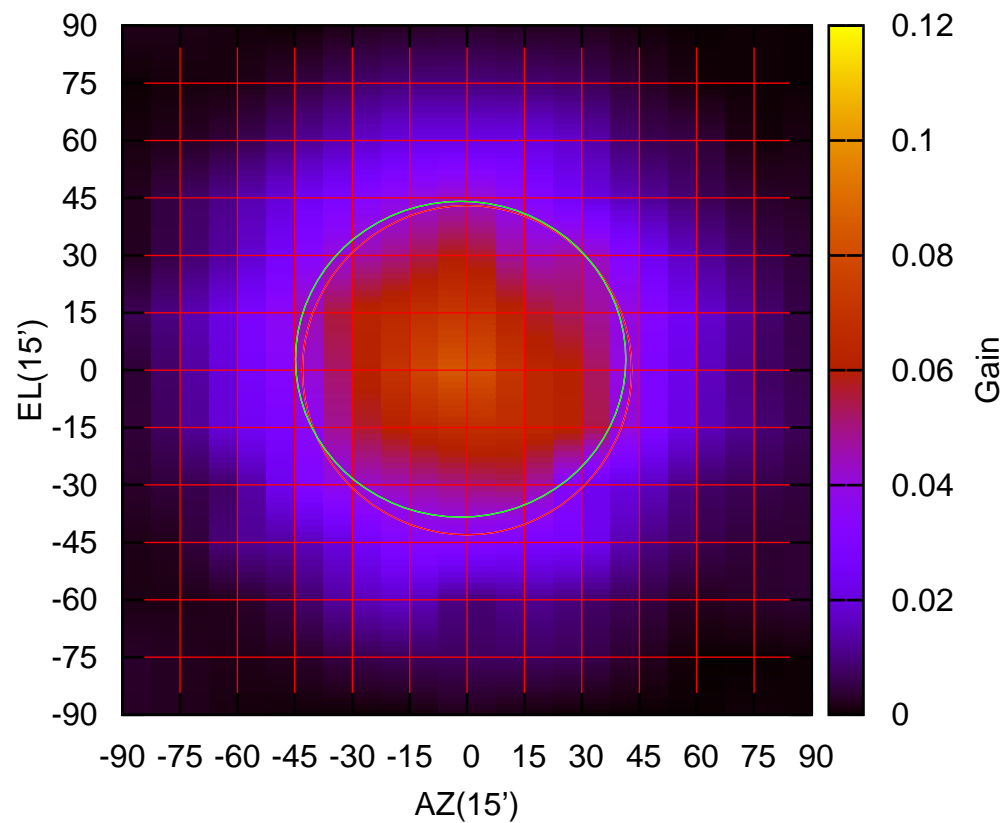
325 MHz.



W05-130 ELOFF= 2.6' ELBEAM= 82.1'

W05-175 AZOFF= -1.7' AZBEAM= 86.3'

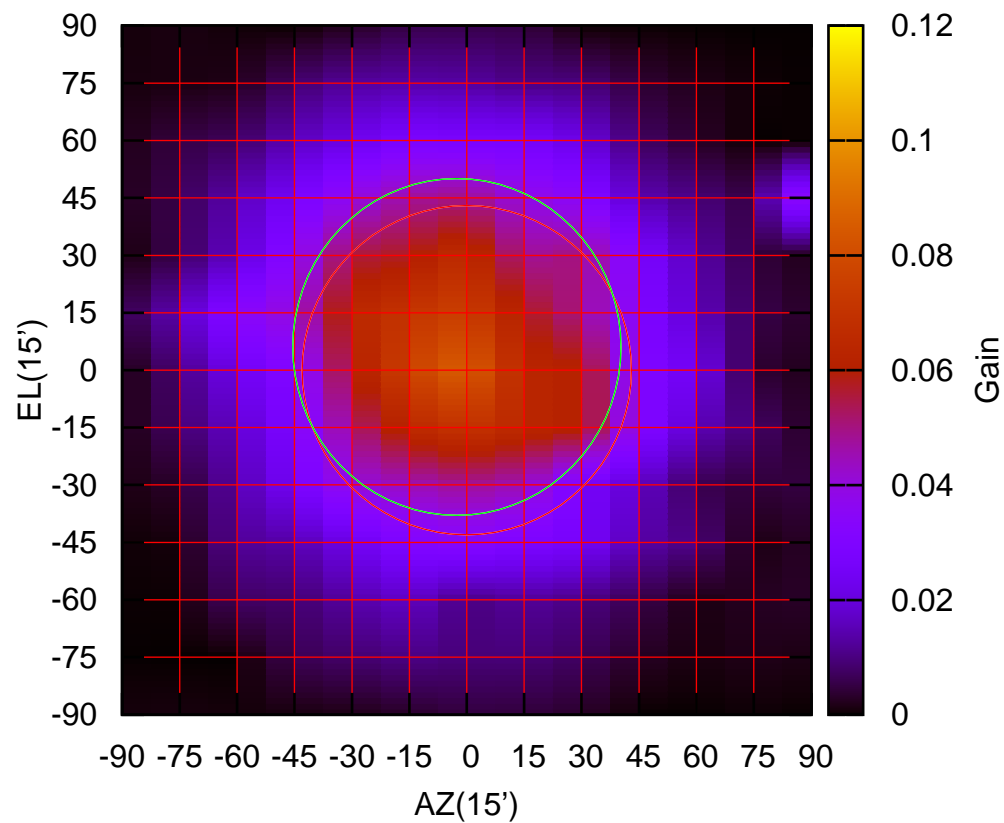
325 MHz.



W05-175 ELOFF= 2.9' ELBEAM= 82.6'

W06-130 AZOFF= -2.6' AZBEAM= 85.8'

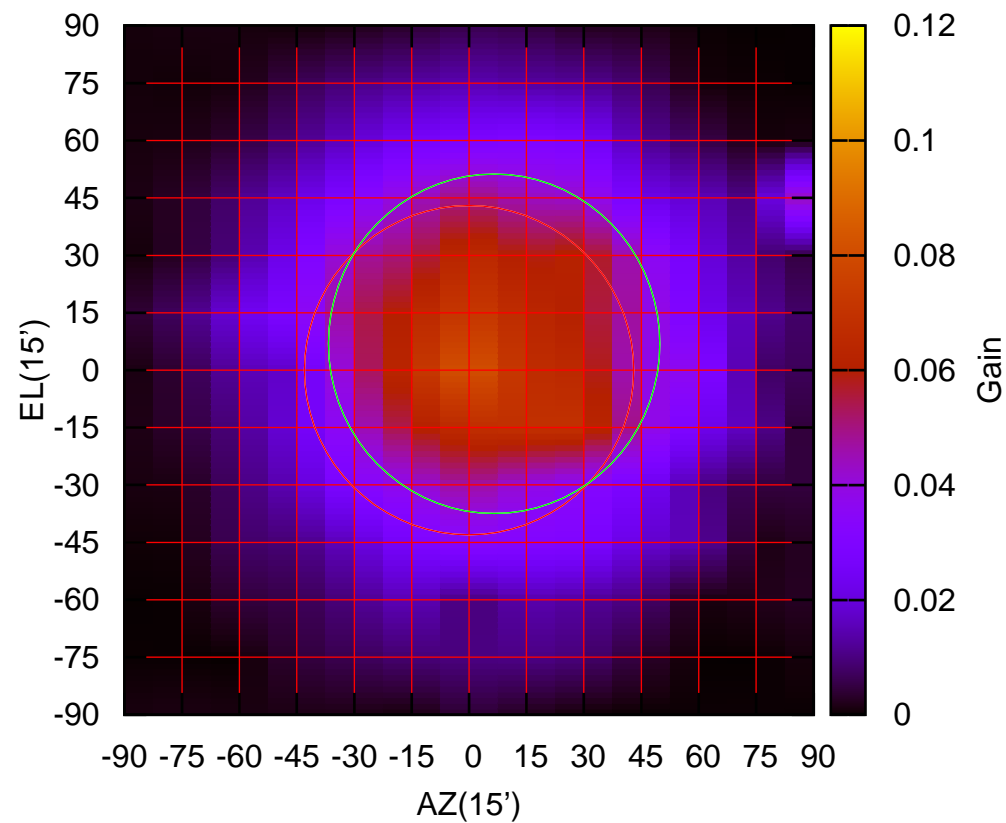
325 MHz.



W06-130 ELOFF= 6.1' ELBEAM= 88.0'

W06-175 AZOFF= 6.6' AZBEAM= 86.6'

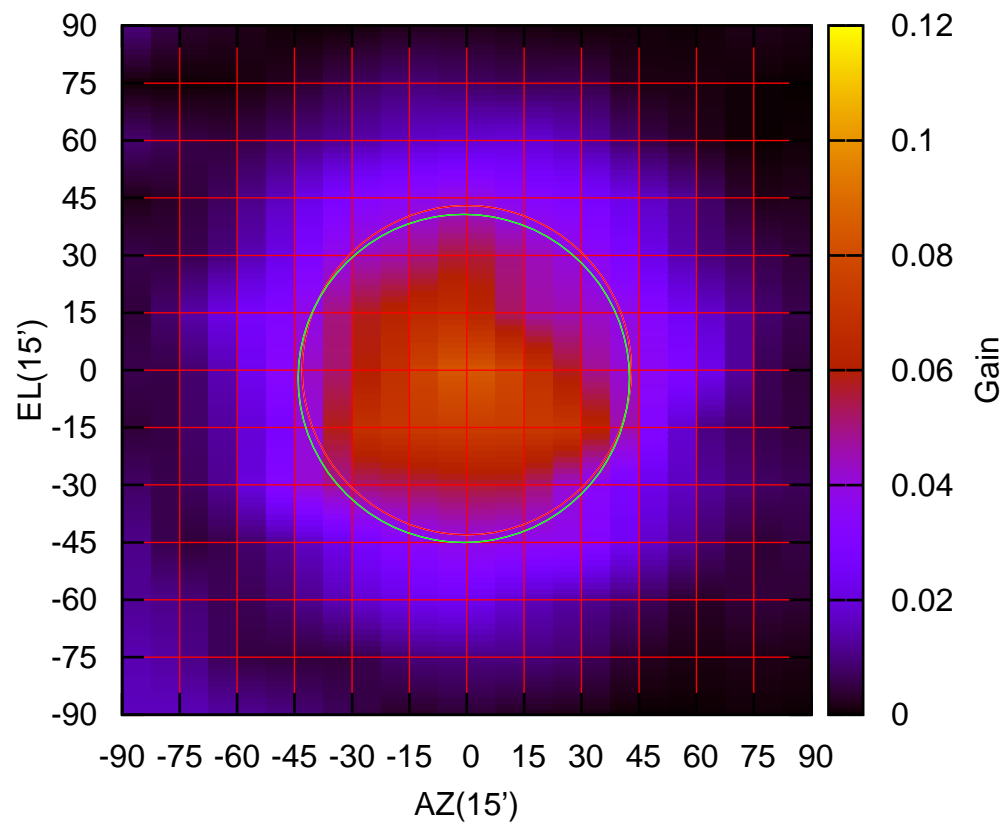
325 MHz.



W06-175 ELOFF= 6.9' ELBEAM= 88.7'

E02-130 AZOFF= -0.8' AZBEAM= 86.6'

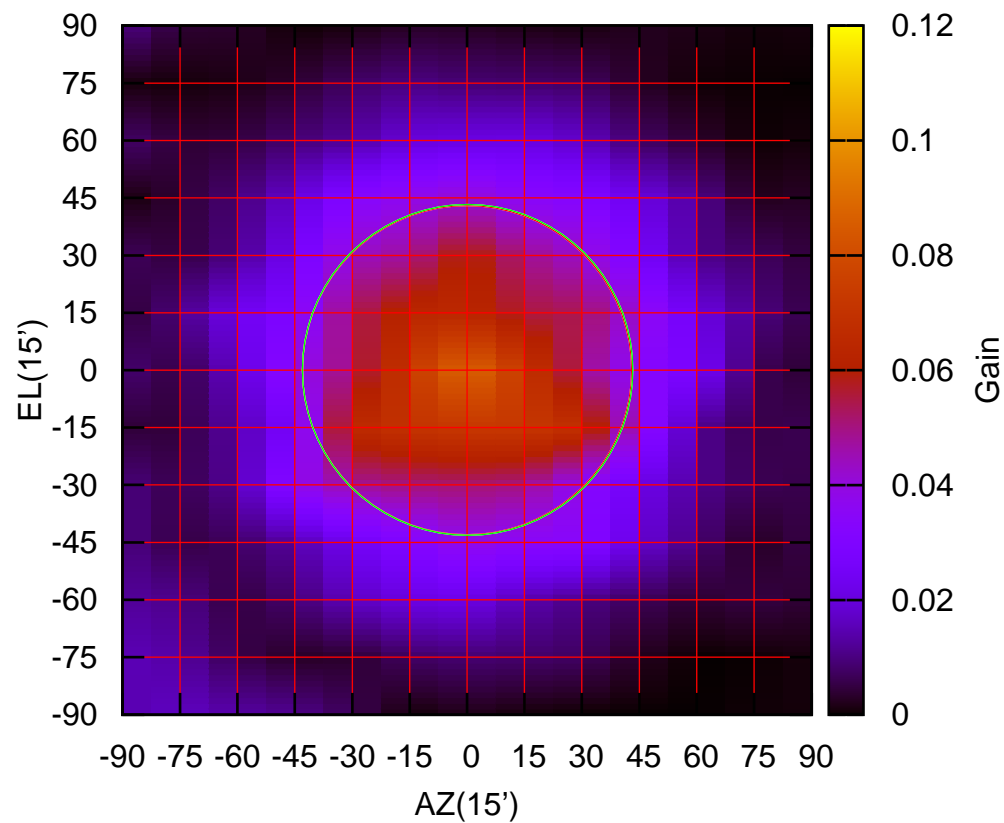
325 MHz.



E02-130 ELOFF= -2.2' ELBEAM= 85.8'

E02-175 AZOFF= 0.2' AZBEAM= 86.3'

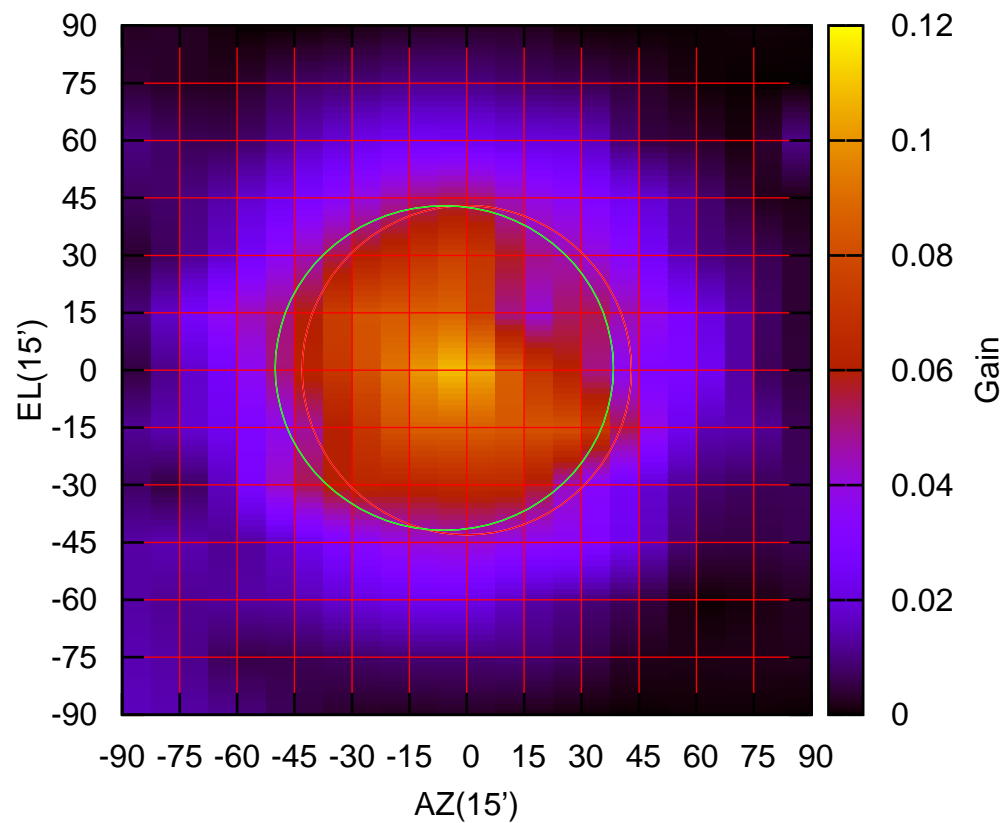
325 MHz.



E02-175 ELOFF= 0.1' ELBEAM= 86.5'

E03-130 AZOFF= -5.9' AZBEAM= 88.4'

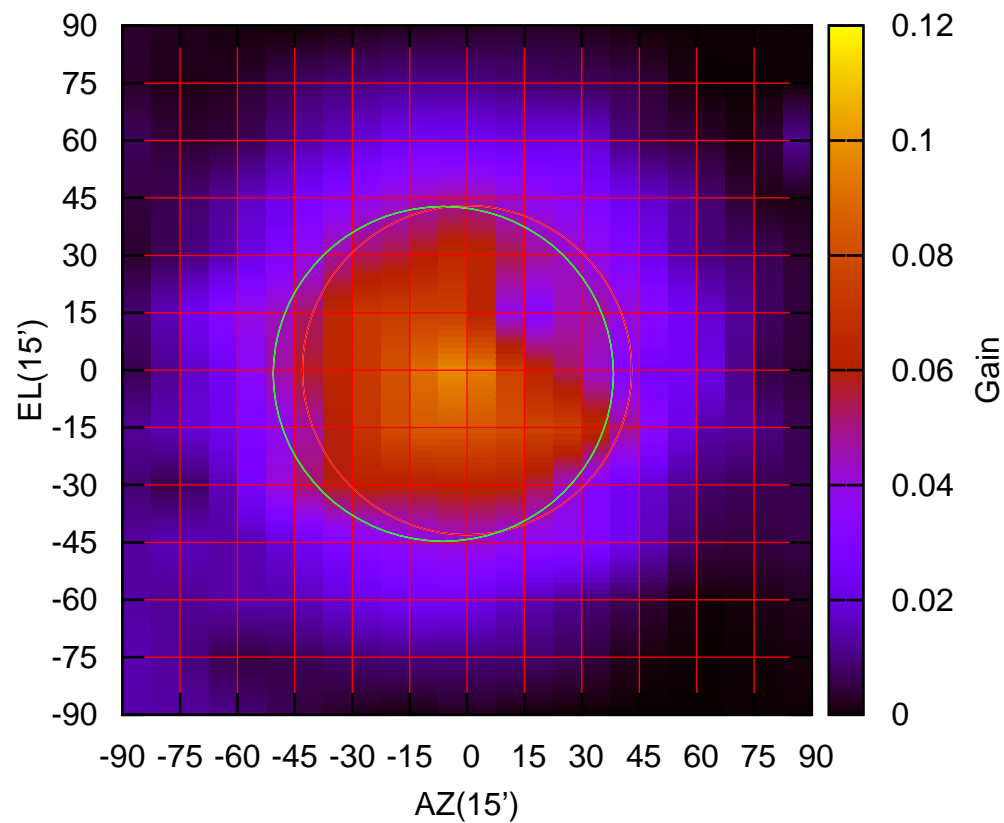
325 MHz.



E03-130 ELOFF= 0.6' ELBEAM= 84.8'

E03-175 AZOFF= -6.2' AZBEAM= 88.9'

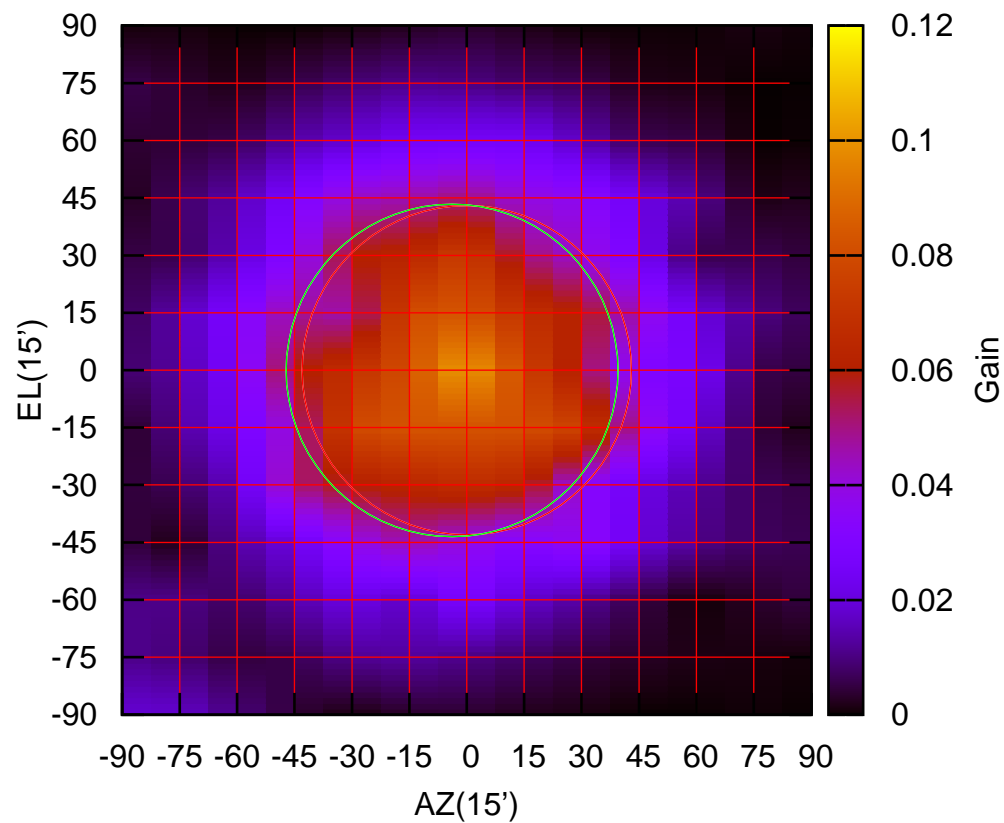
325 MHz.



E03-175 ELOFF= -1.0' ELBEAM= 87.5'

E04-130 AZOFF= -3.9' AZBEAM= 86.7'

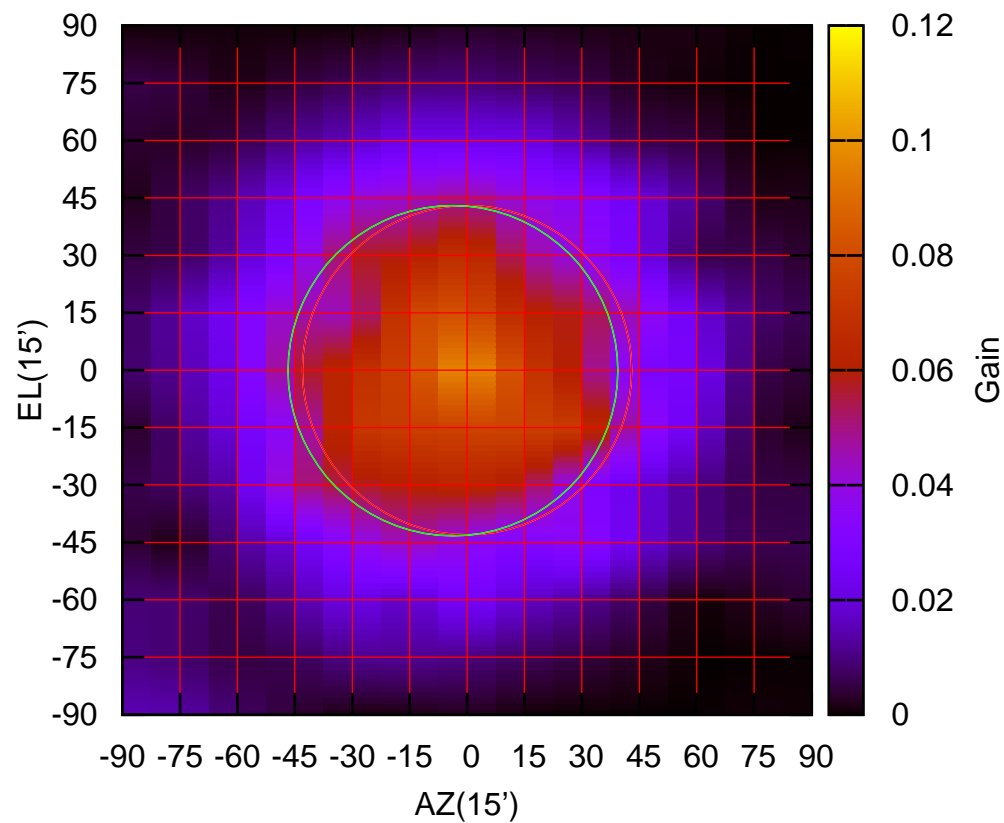
325 MHz.



E04-130 ELOFF= -0.1' ELBEAM= 86.9'

E04-175 AZOFF= -3.7' AZBEAM= 86.2'

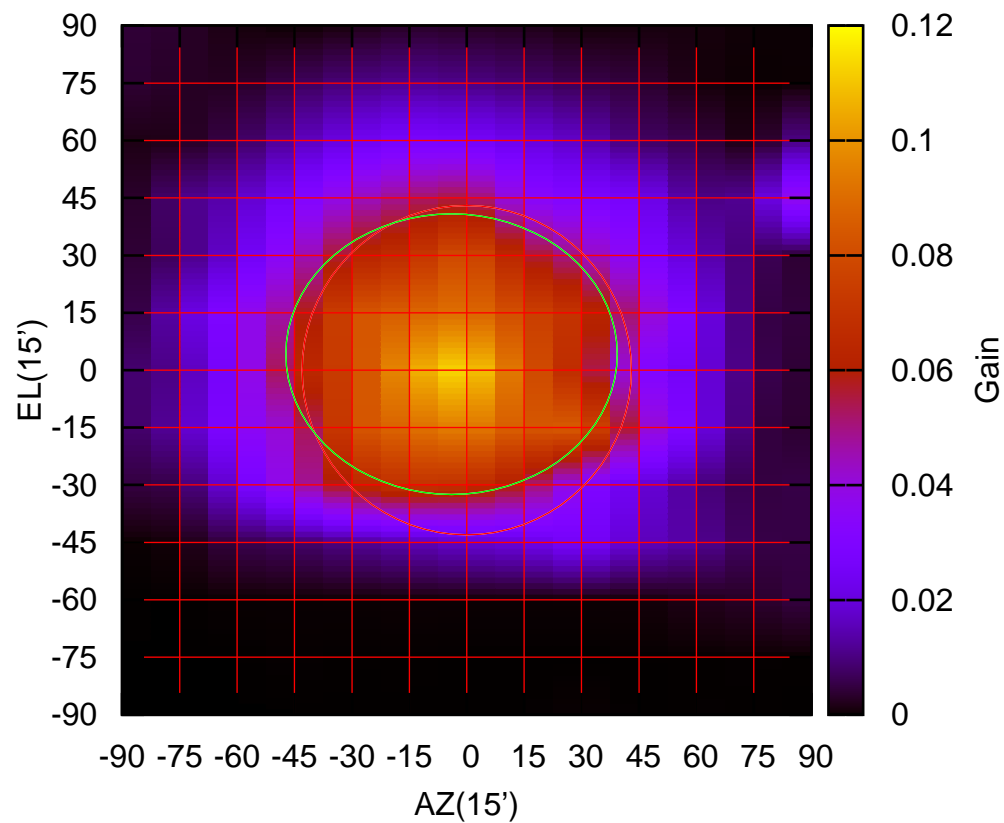
325 MHz.



E04-175 ELOFF= -0.2' ELBEAM= 86.3'

E05-130 AZOFF= -4.0' AZBEAM= 86.6'

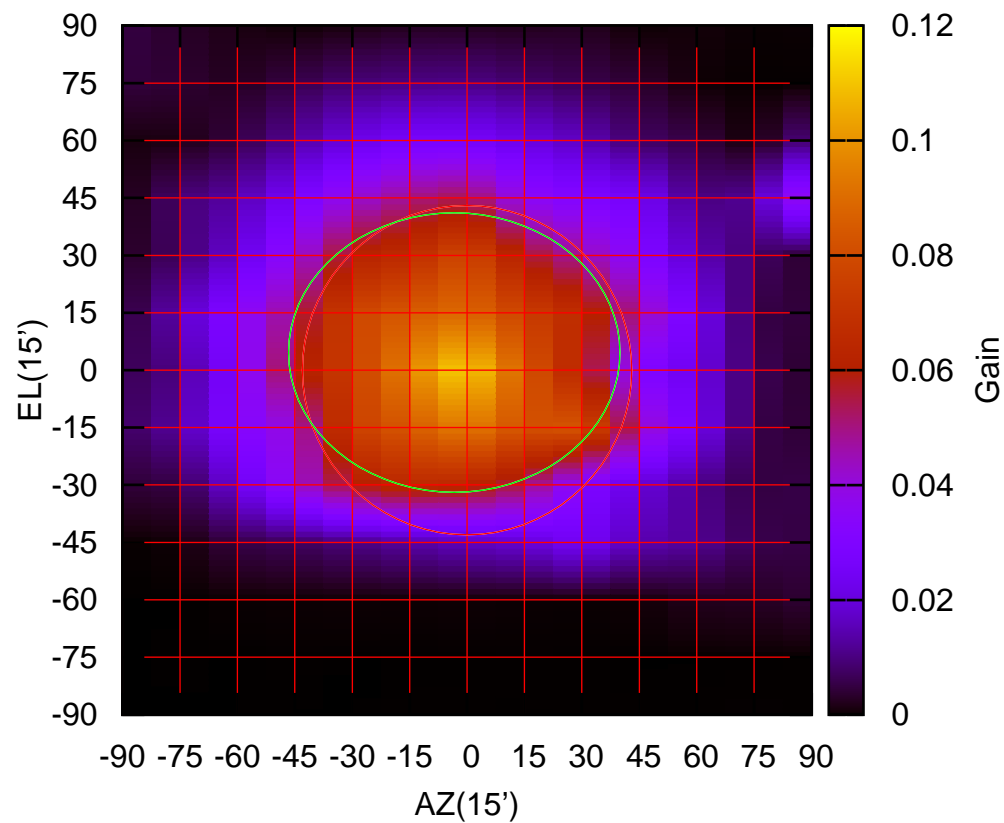
325 MHz.



E05-130 ELOFF= 4.2' ELBEAM= 73.3'

E05-175 AZOFF= -3.4' AZBEAM= 86.6'

325 MHz.

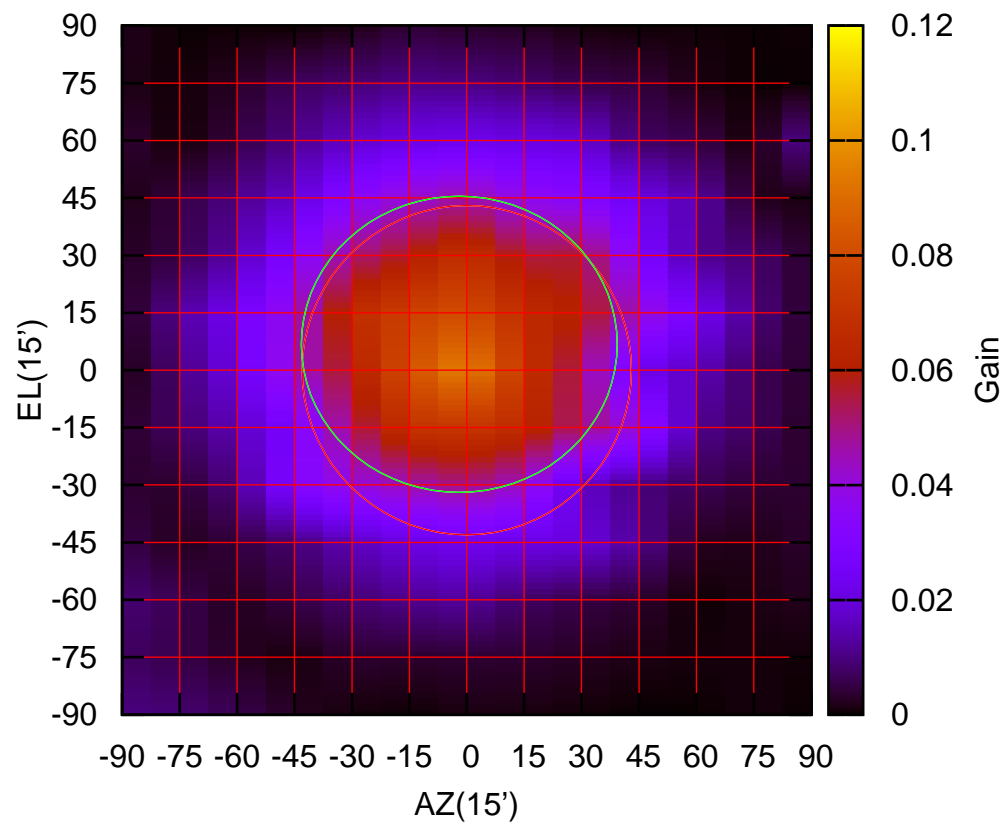


E05-175 ELOFF= 4.6' ELBEAM= 73.0'



E06-130 AZOFF= -2.0' AZBEAM= 82.6'

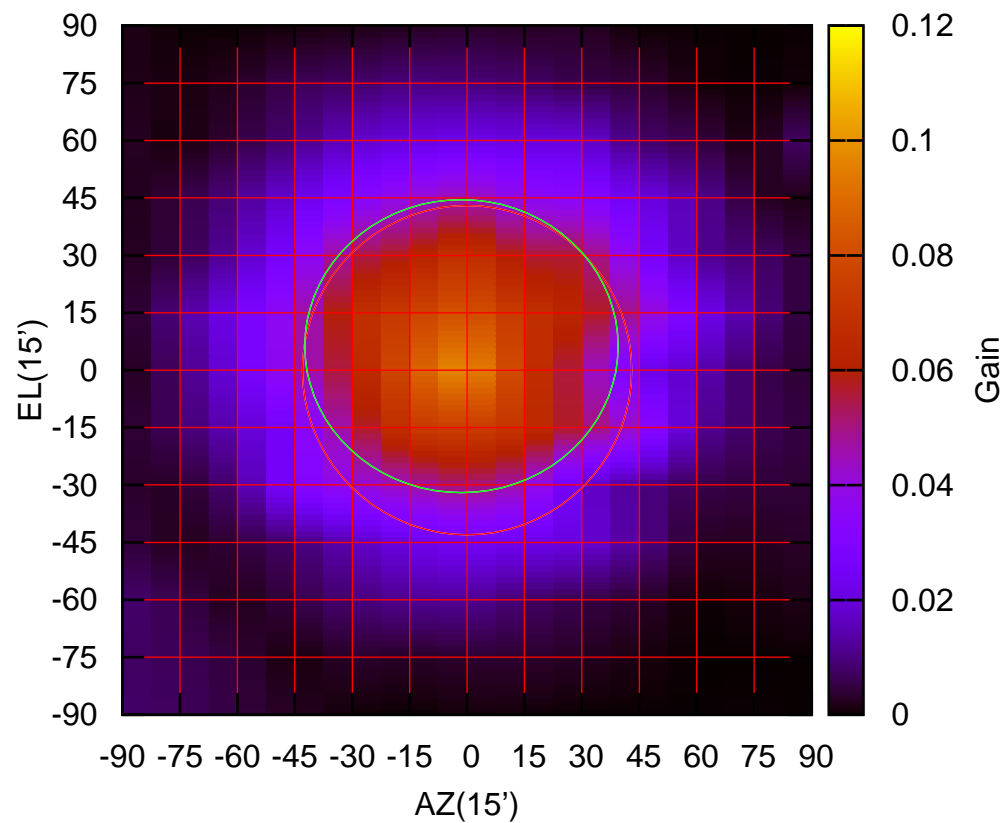
325 MHz.



E06-130 ELOFF= 6.8' ELBEAM= 77.4'

E06-175 AZOFF= -1.5' AZBEAM= 81.9'

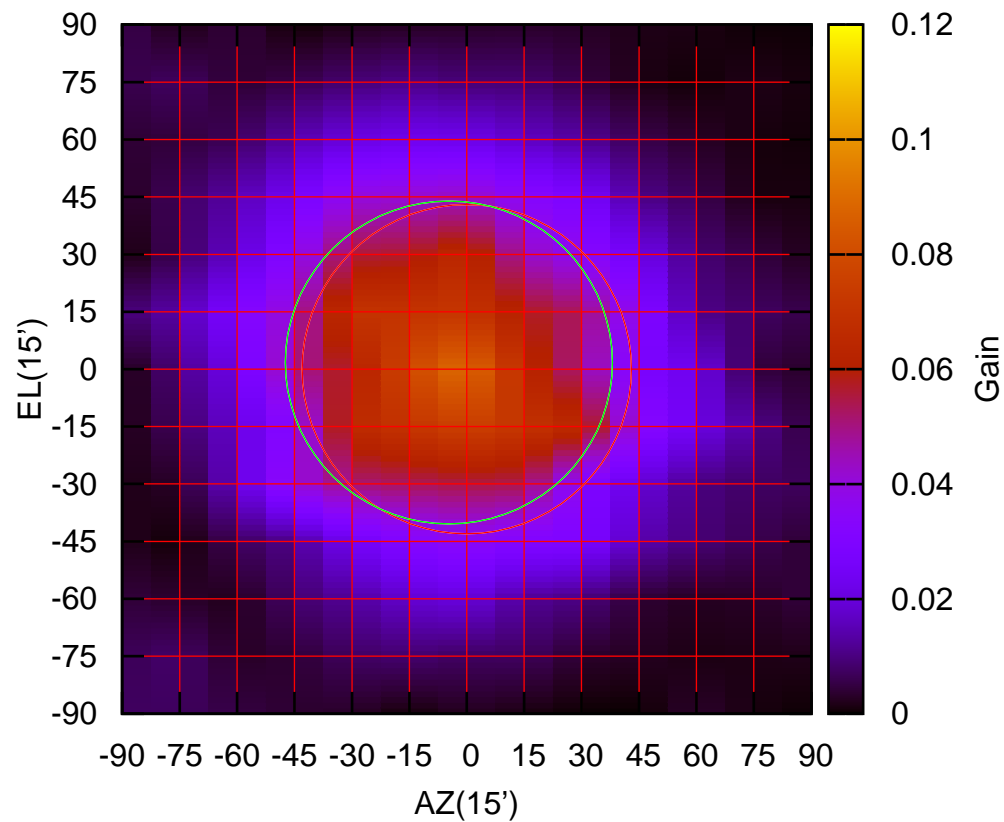
325 MHz.



E06-175 ELOFF= 6.3' ELBEAM= 76.6'

S01-130 AZOFF= -4.7' AZBEAM= 85.5'

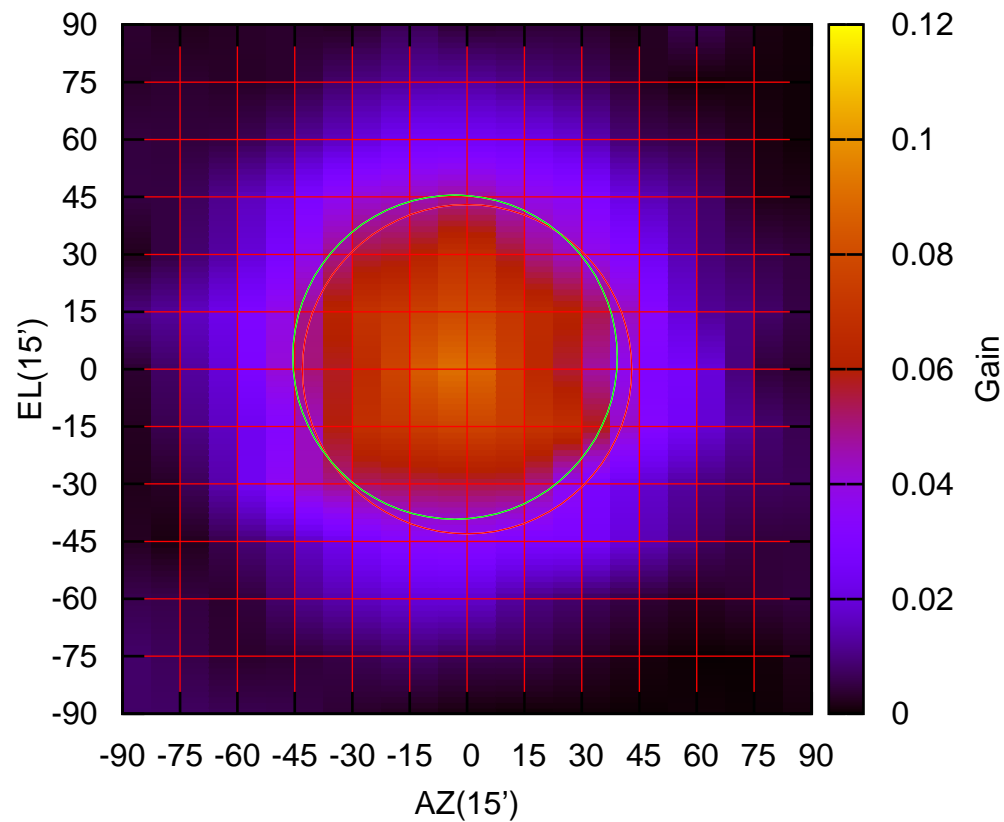
325 MHz.



S01-130 ELOFF= 1.8' ELBEAM= 84.4'

S01-175 AZOFF= -3.2' AZBEAM= 84.8'

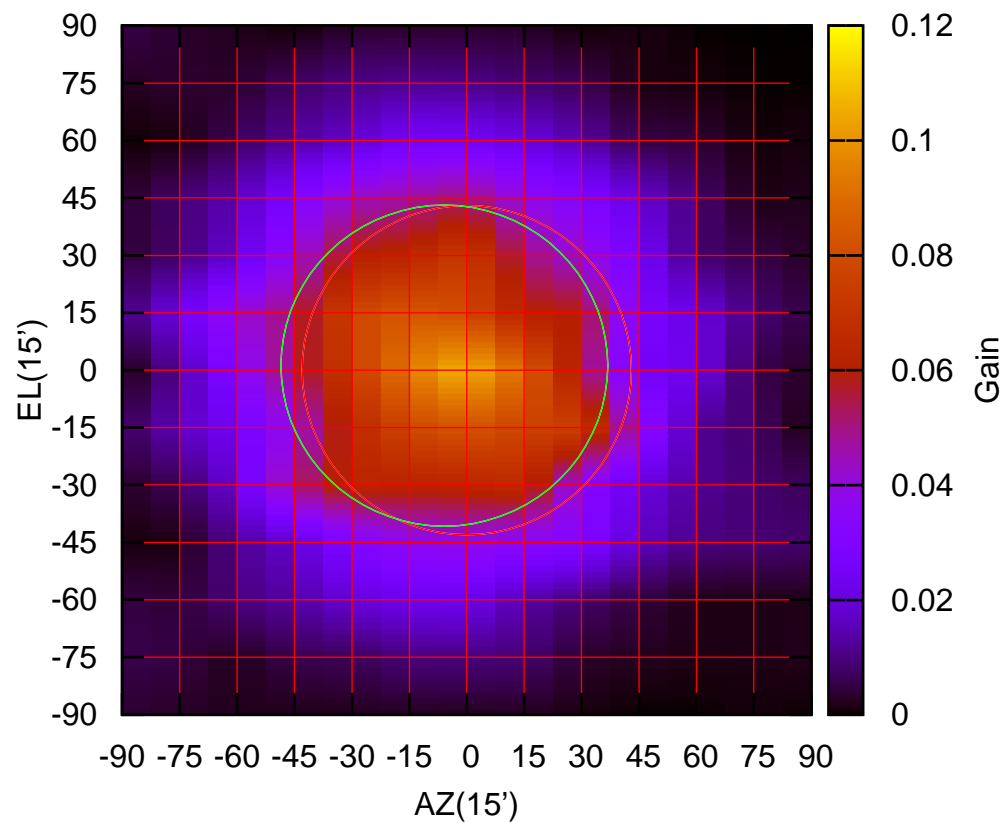
325 MHz.



S01-175 ELOFF= 3.2' ELBEAM= 84.7'

S02-130 AZOFF= -5.9' AZBEAM= 85.4'

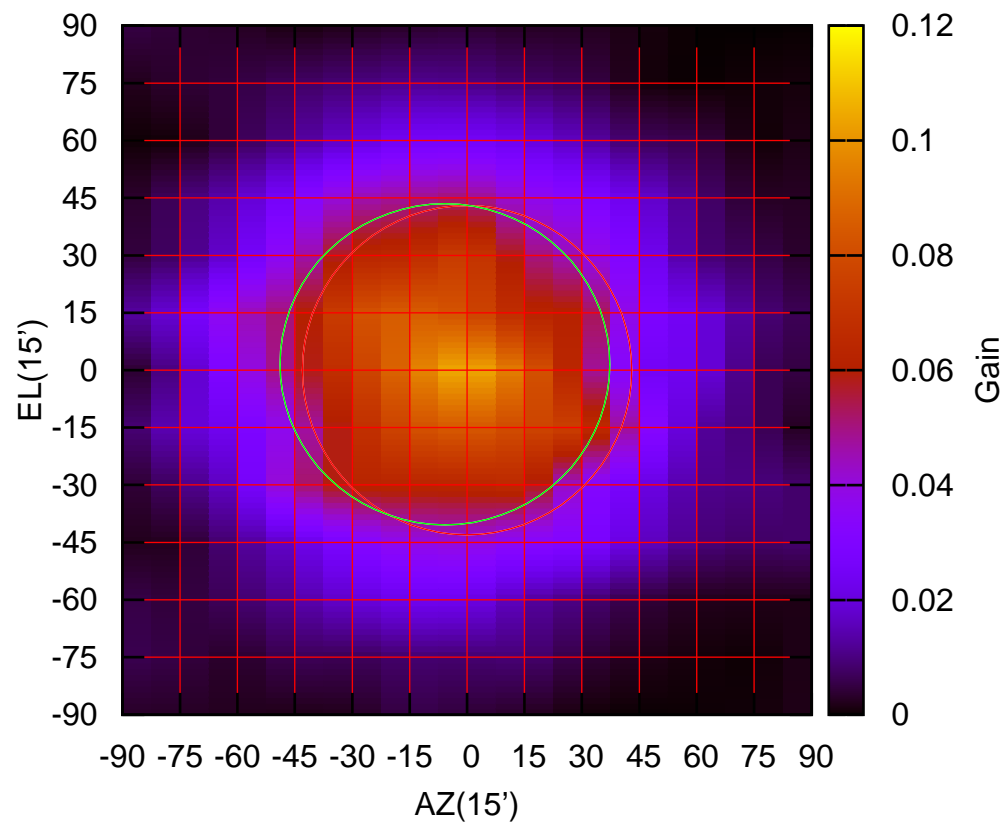
325 MHz.



S02-130 ELOFF= 1.2' ELBEAM= 83.9'

S02-175 AZOFF= -5.8' AZBEAM= 86.2'

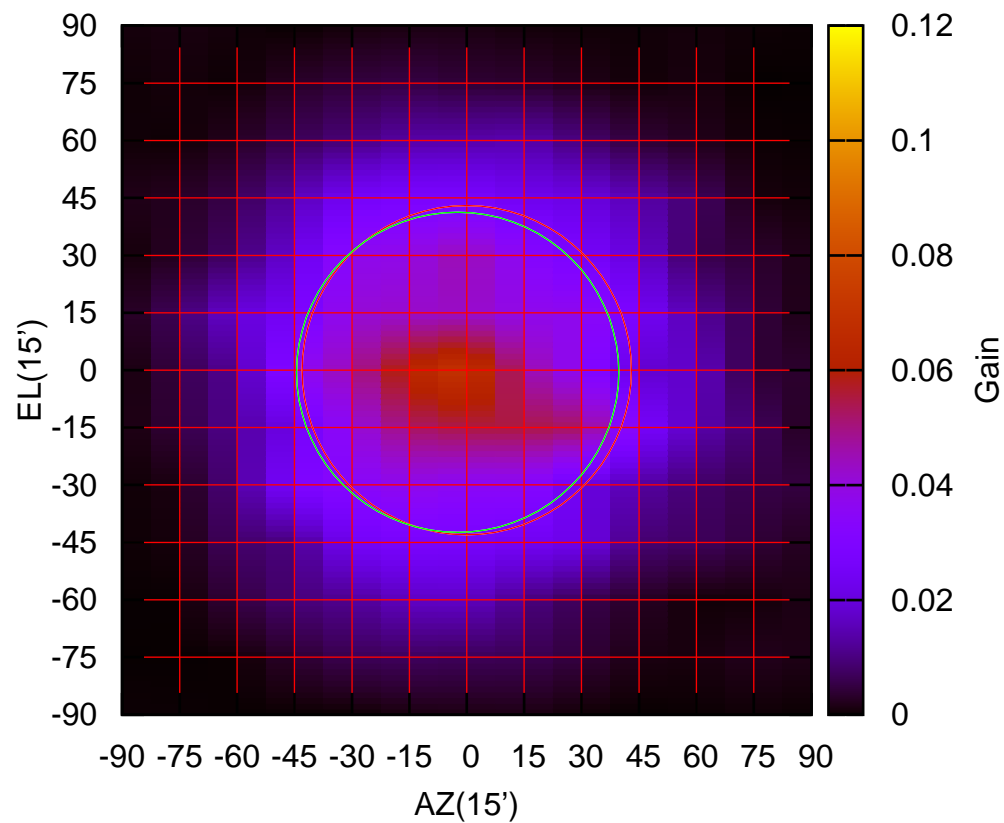
325 MHz.



S02-175 ELOFF= 1.6' ELBEAM= 83.9'

S03-130 AZOFF= -2.4' AZBEAM= 84.2'

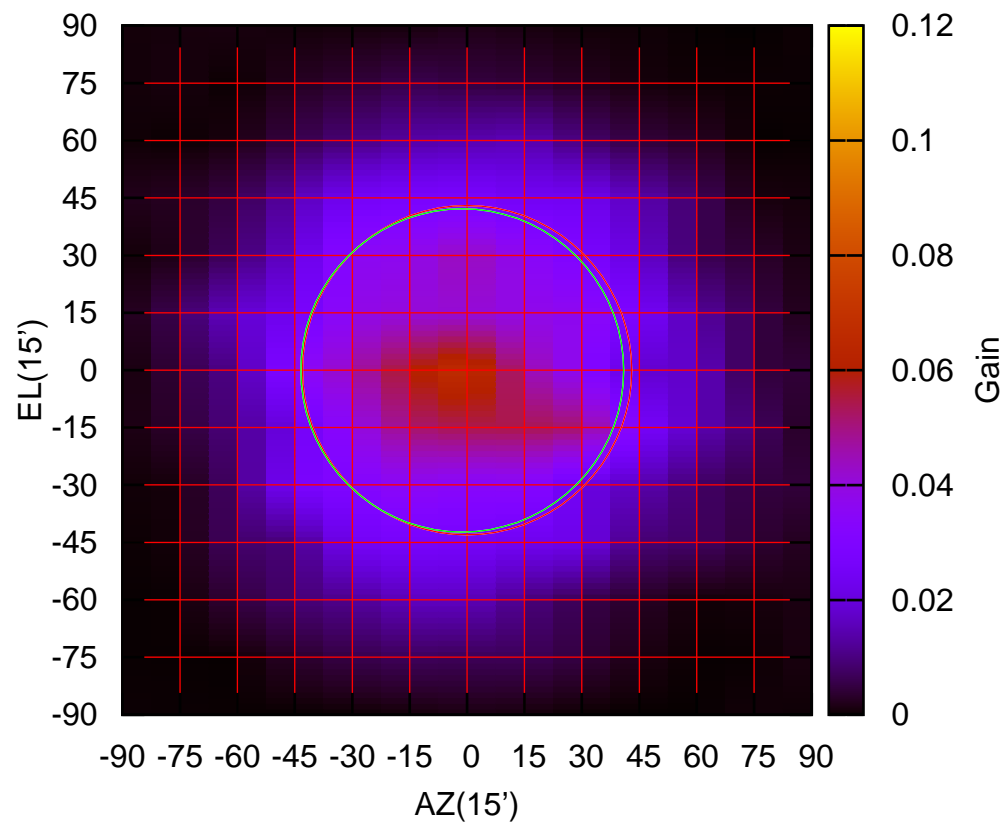
325 MHz.



S03-130 ELOFF= -0.6' ELBEAM= 83.7'

S03-175 AZOFF= -1.3' AZBEAM= 84.4'

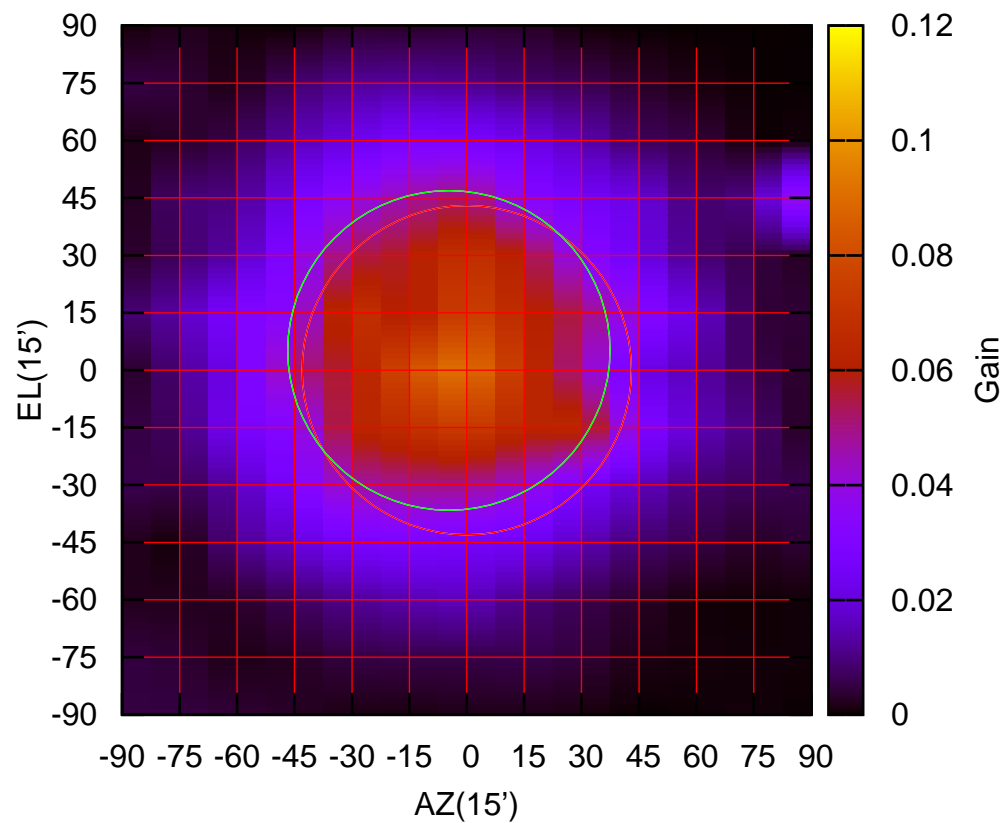
325 MHz.



S03-175 ELOFF= -0.1' ELBEAM= 84.5'

S04-130 AZOFF= -4.7' AZBEAM= 84.2'

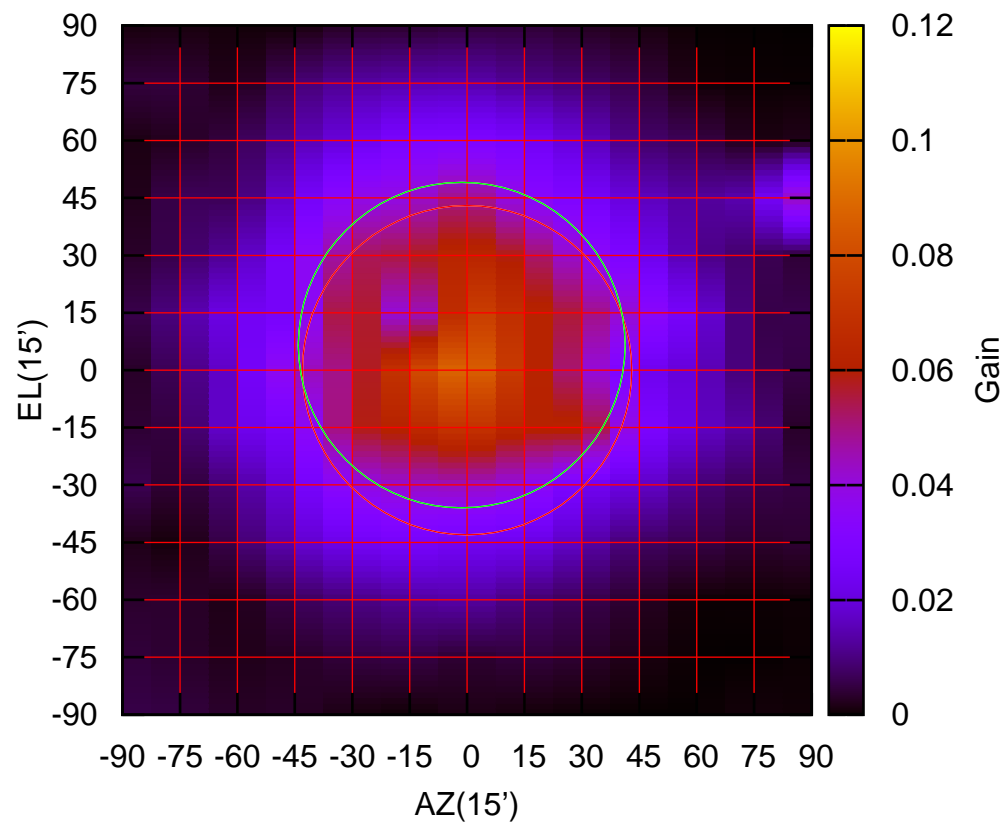
325 MHz.



S04-130 ELOFF= 5.2' ELBEAM= 83.5'

S04-175 AZOFF= -1.4' AZBEAM= 85.4'

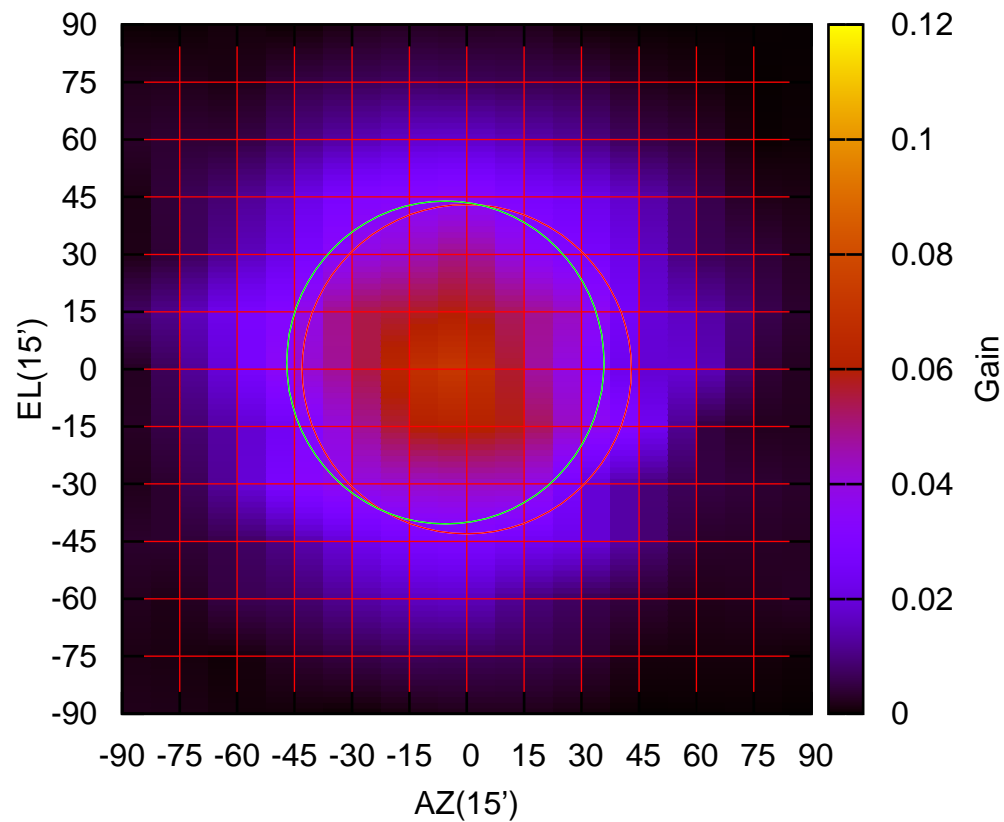
325 MHz.



S04-175 ELOFF= 6.6' ELBEAM= 85.1'

S06-130 AZOFF= -5.6' AZBEAM= 82.9'

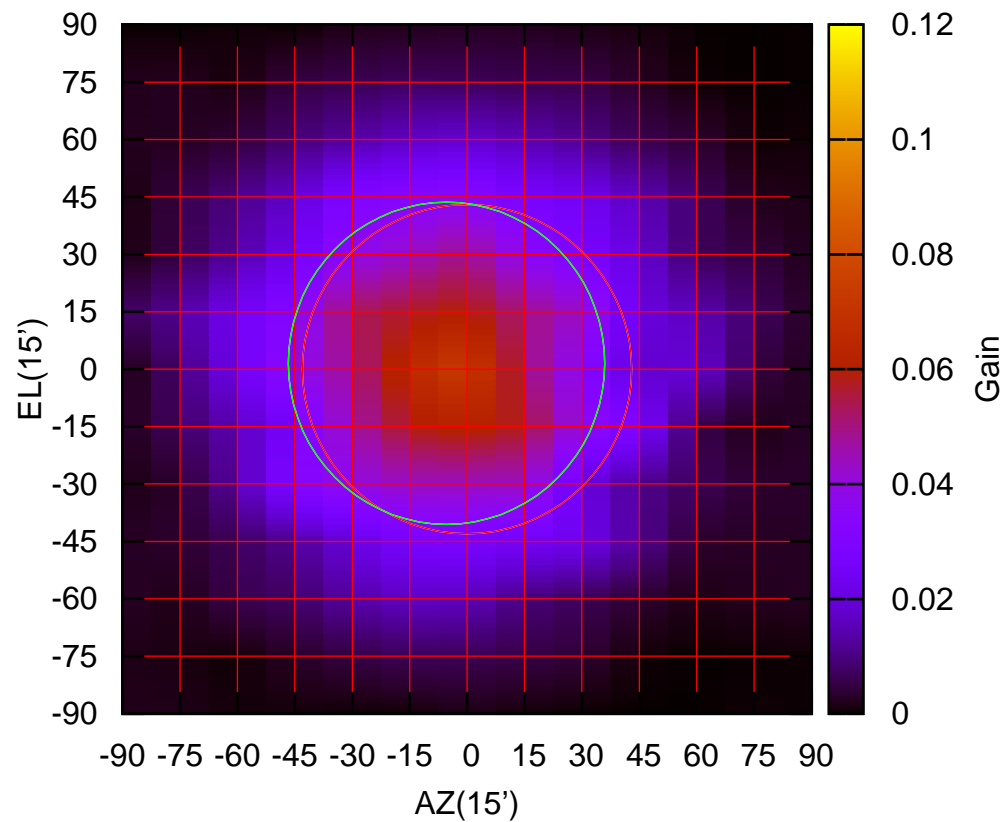
325 MHz.



S06-130 ELOFF= 1.8' ELBEAM= 84.4'

S06-175 AZOFF= -5.4' AZBEAM= 82.7'

325 MHz.



S06-175 ELOFF= 1.6' ELBEAM= 84.2'