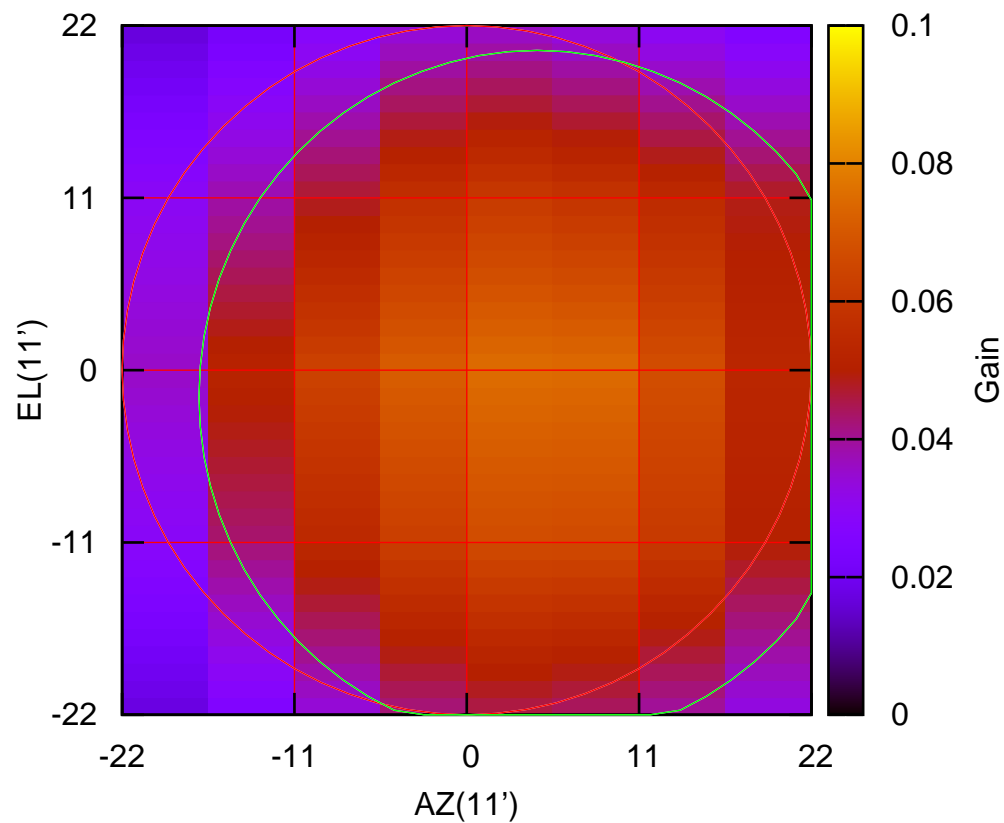


C00-130 AZOFF= 4.5' AZBEAM= 43.2'

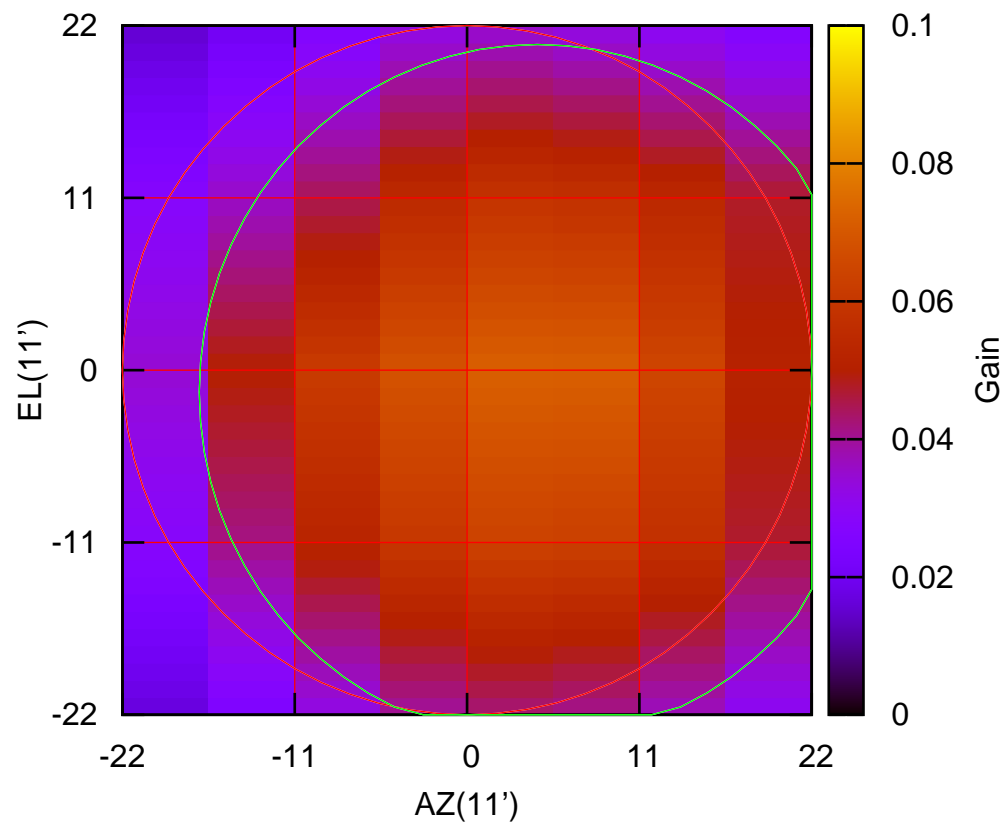
610 MHz.



C00-130 ELOFF= -1.7' ELBEAM= 44.2'

C00-175 AZOFF= 4.5' AZBEAM= 43.2'

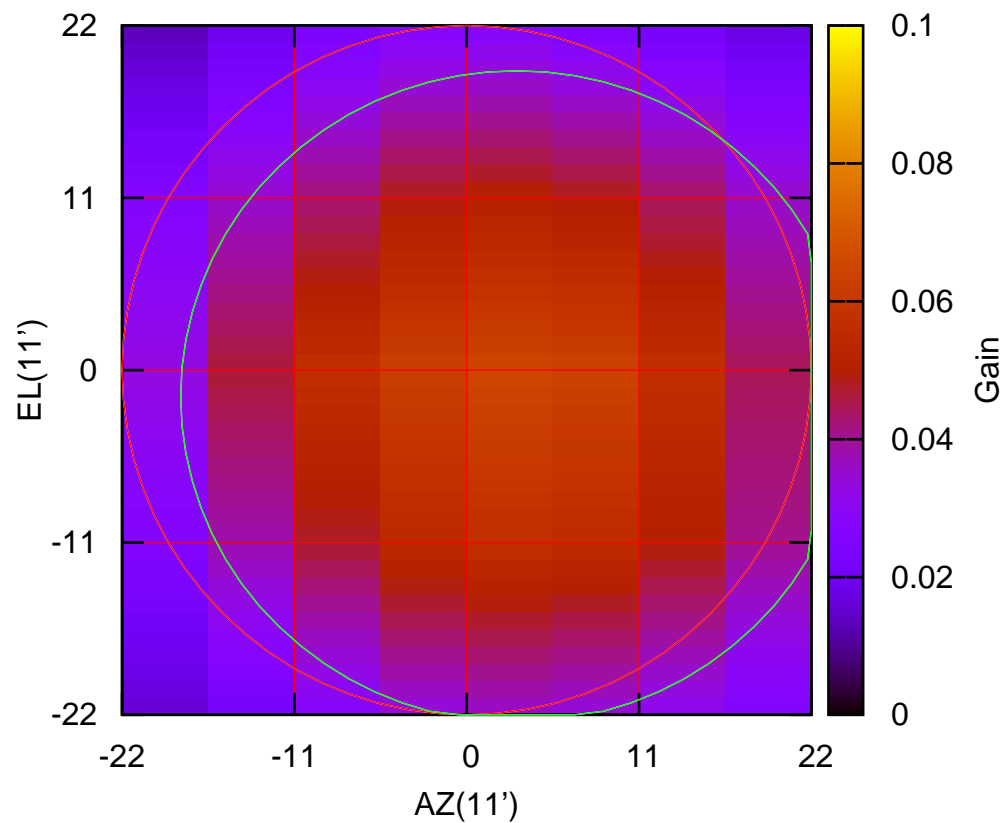
610 MHz.



C00-175 ELOFF= -1.4' ELBEAM= 44.4'

C01-130 AZOFF= 3.2' AZBEAM= 42.9'

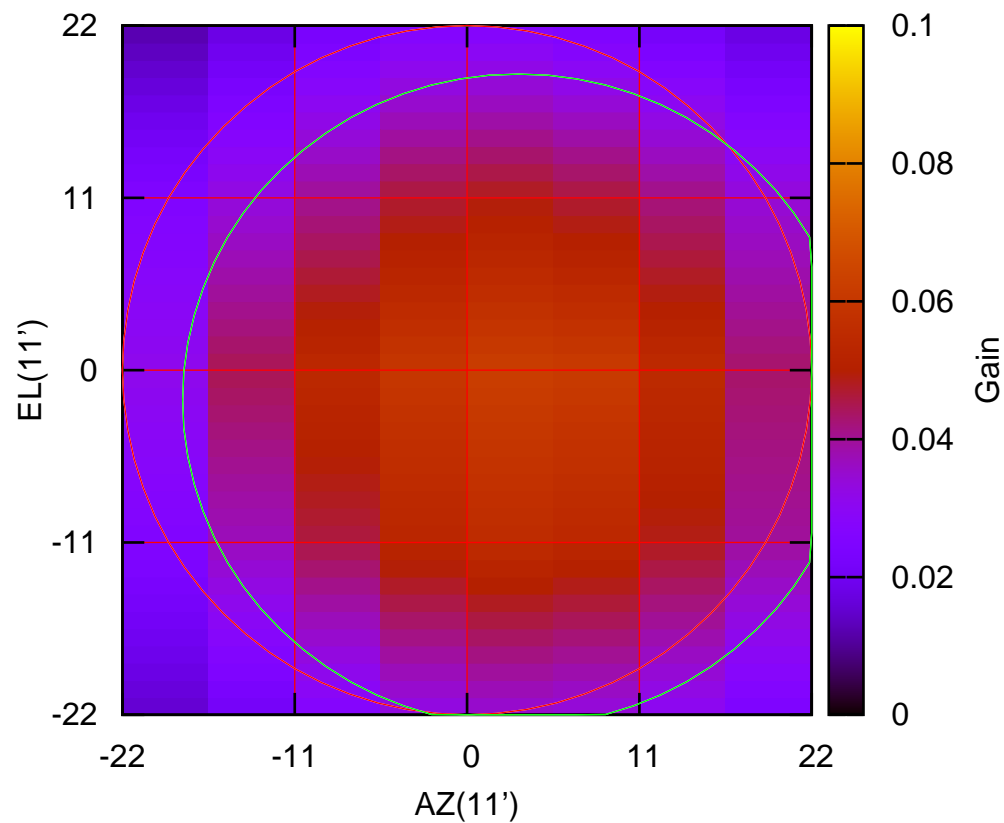
610 MHz.



C01-130 ELOFF= -1.7' ELBEAM= 41.6'

C01-175 AZOFF= 3.3' AZBEAM= 42.9'

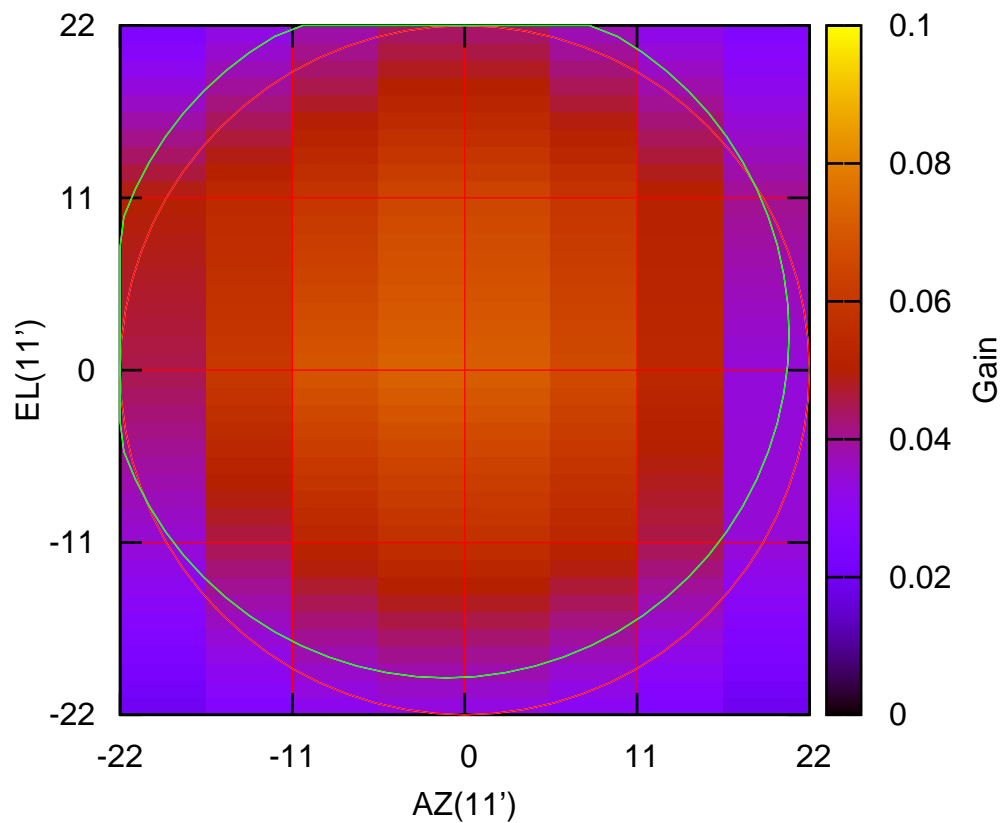
610 MHz.



C01-175 ELOFF= -1.9' ELBEAM= 41.6'

C02-130 AZOFF= -1.2' AZBEAM= 43.8'

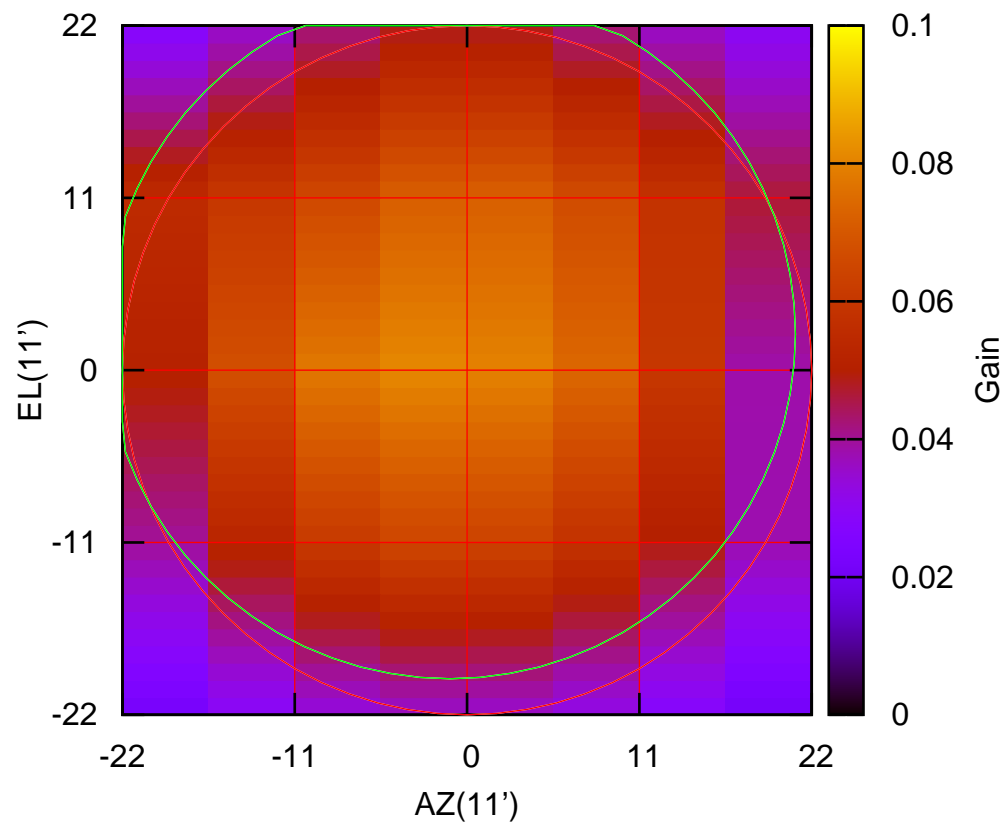
610 MHz.



C02-130 ELOFF= 2.3' ELBEAM= 43.9'

C02-175 AZOFF= -1.1' AZBEAM= 44.1'

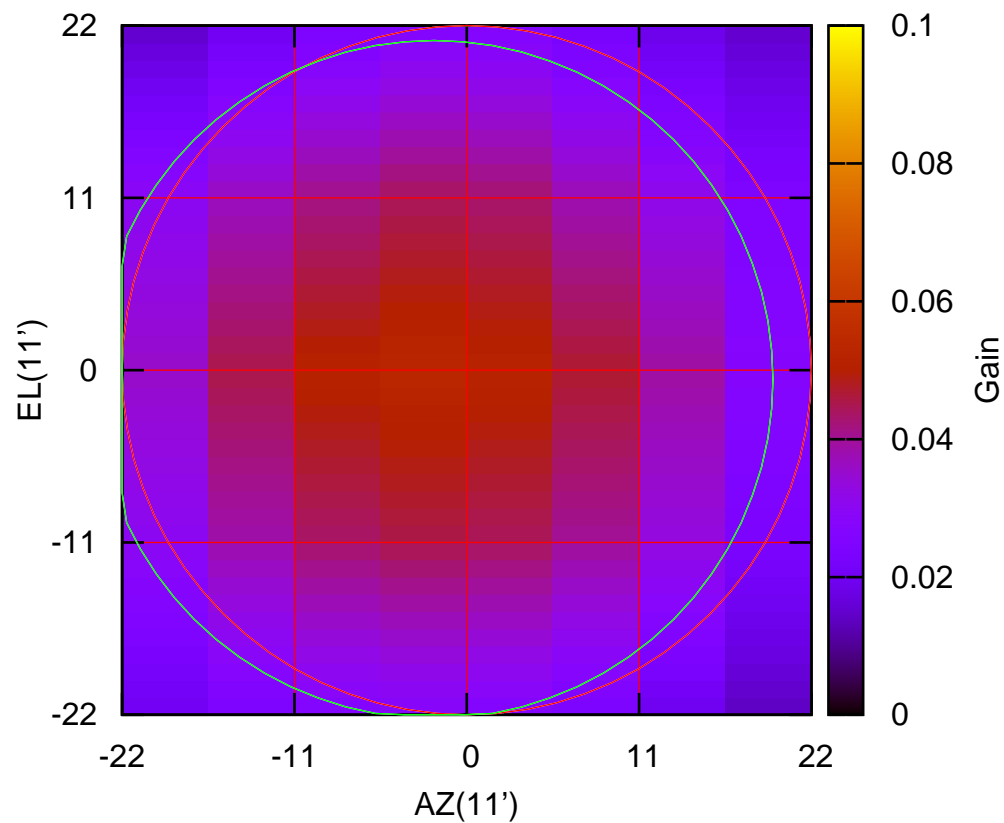
610 MHz.



C02-175 ELOFF= 2.3' ELBEAM= 44.0'

C03-130 AZOFF= -2.1' AZBEAM= 43.3'

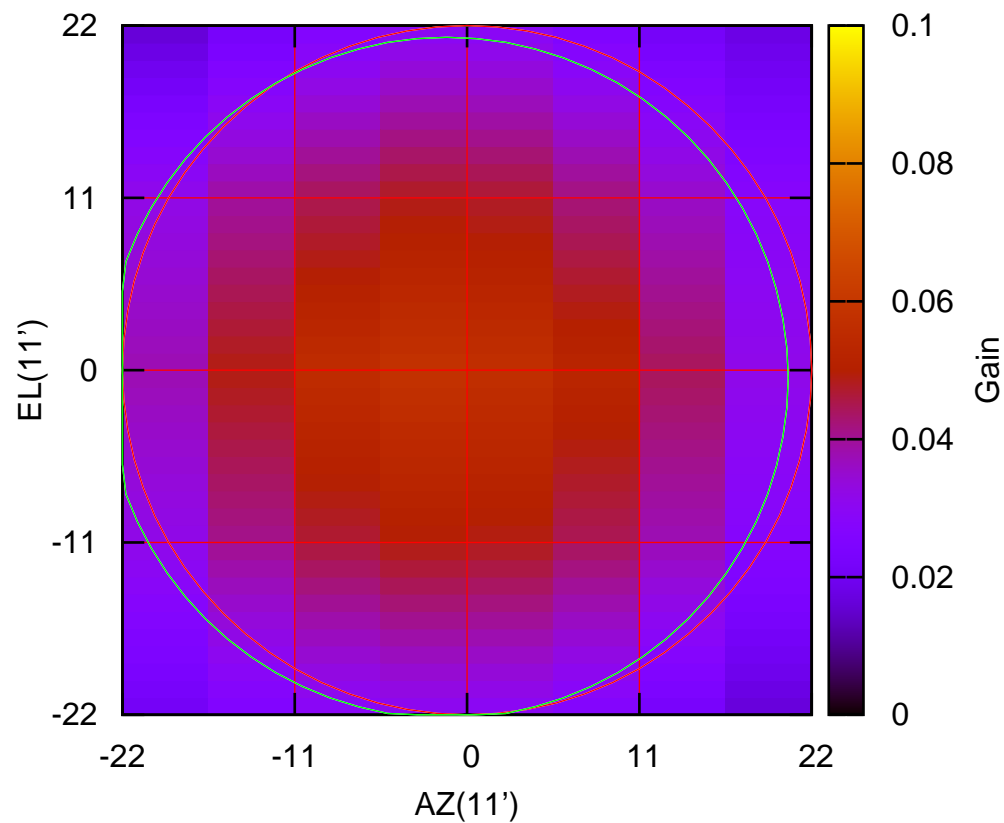
610 MHz.



C03-130 ELOFF= -0.6' ELBEAM= 43.3'

C03-175 AZOFF= -1.3' AZBEAM= 43.6'

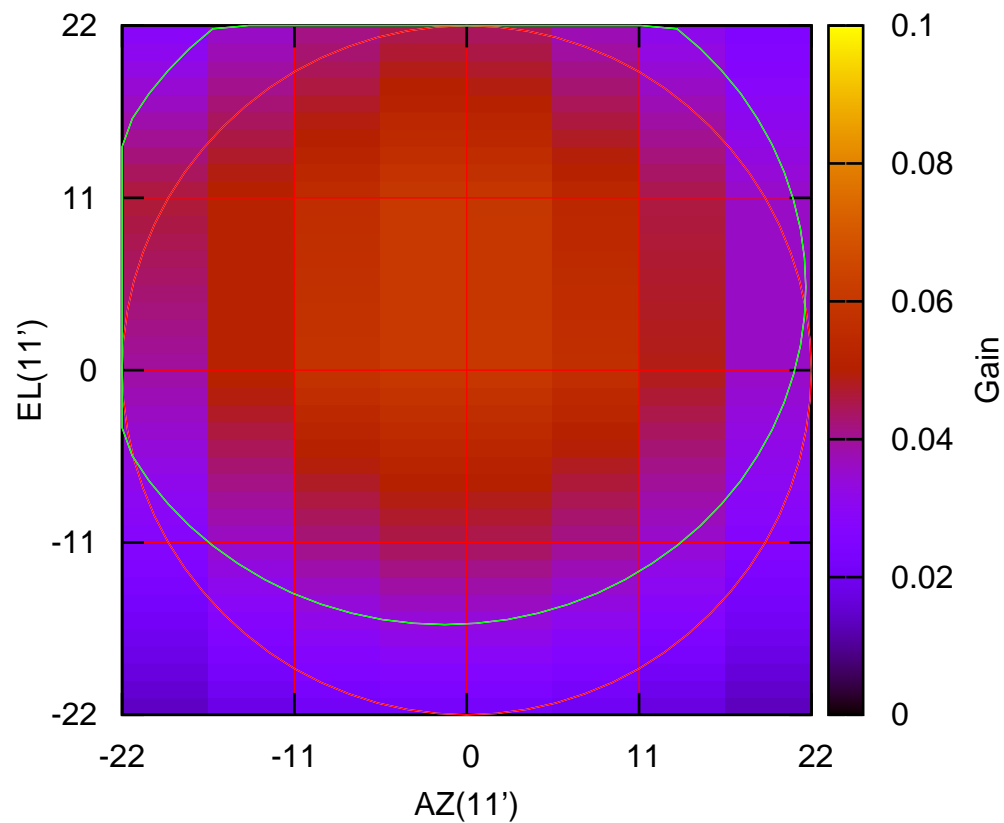
610 MHz.



C03-175 ELOFF= -0.5' ELBEAM= 43.5'

C04-130 AZOFF= -1.4' AZBEAM= 46.1'

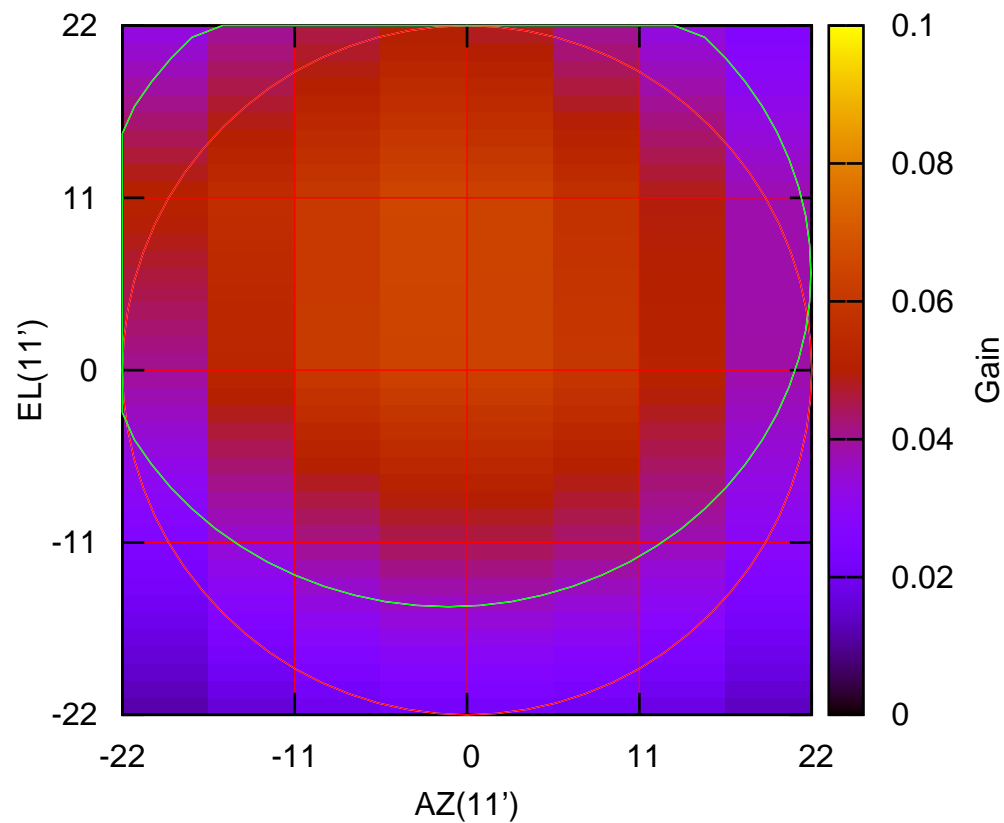
610 MHz.



C04-130 ELOFF= 5.3' ELBEAM= 43.1'

C04-175 AZOFF= -1.2' AZBEAM= 46.3'

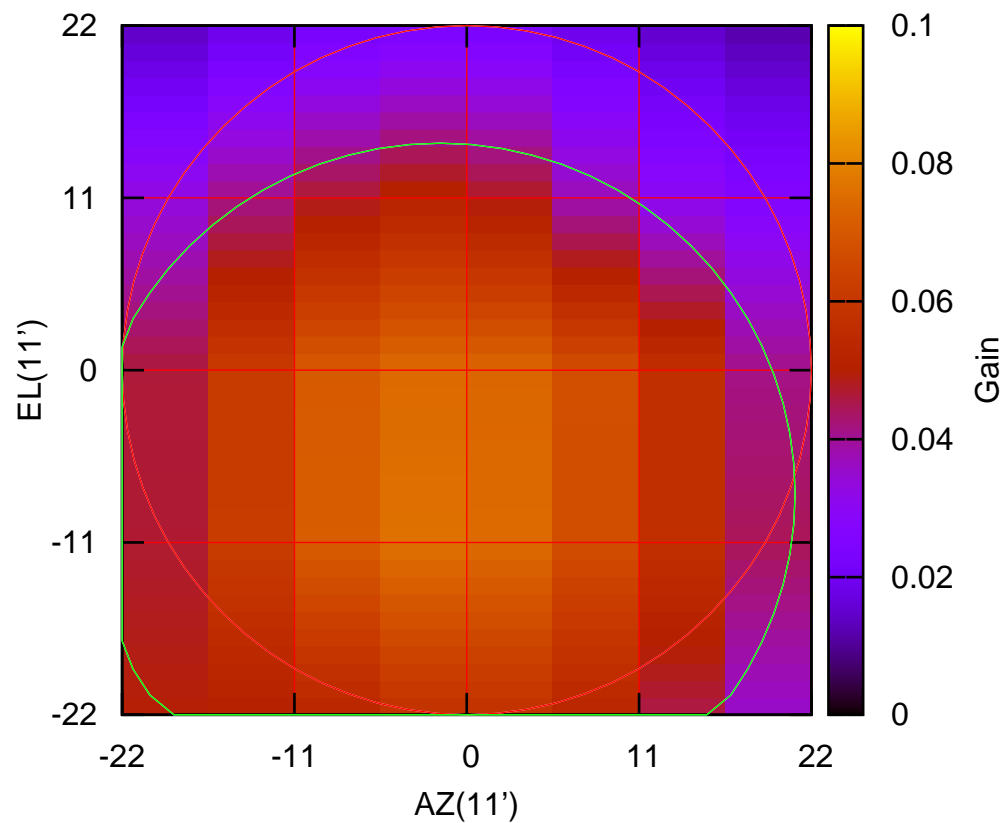
610 MHz.



C04-175 ELOFF= 6.2' ELBEAM= 42.6'

C05-130 AZOFF= -1.7' AZBEAM= 45.3'

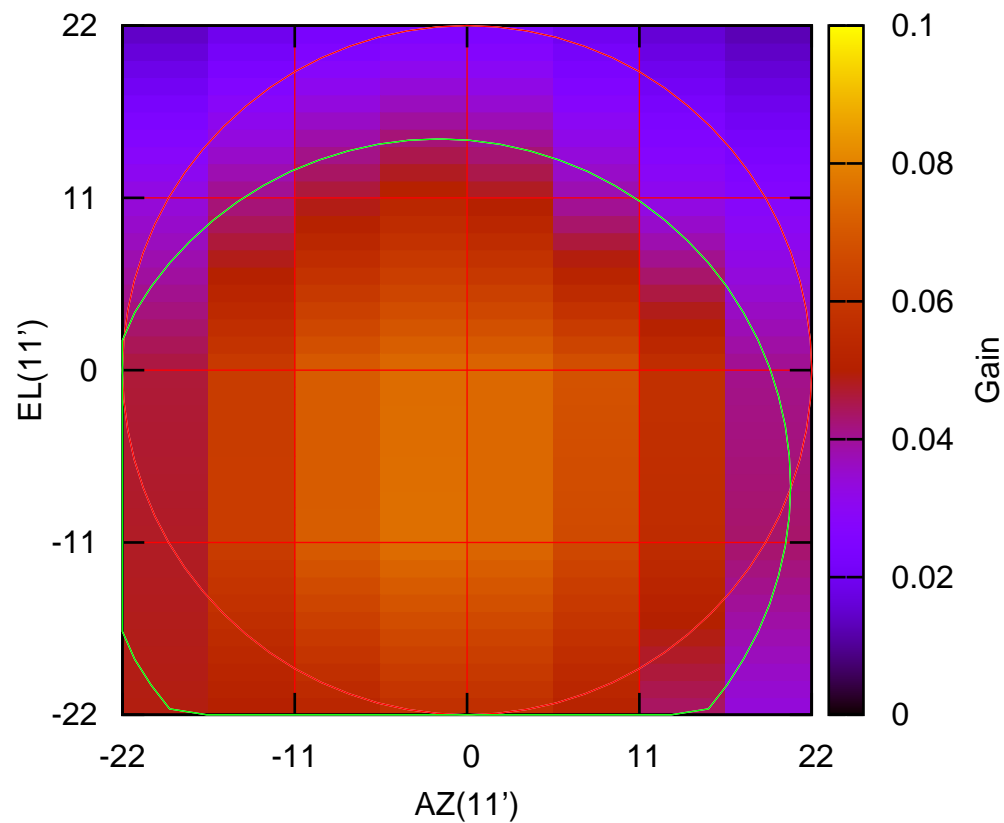
610 MHz.



C05-130 ELOFF= -7.9' ELBEAM= 44.8'

C05-175 AZOFF= -1.8' AZBEAM= 44.9'

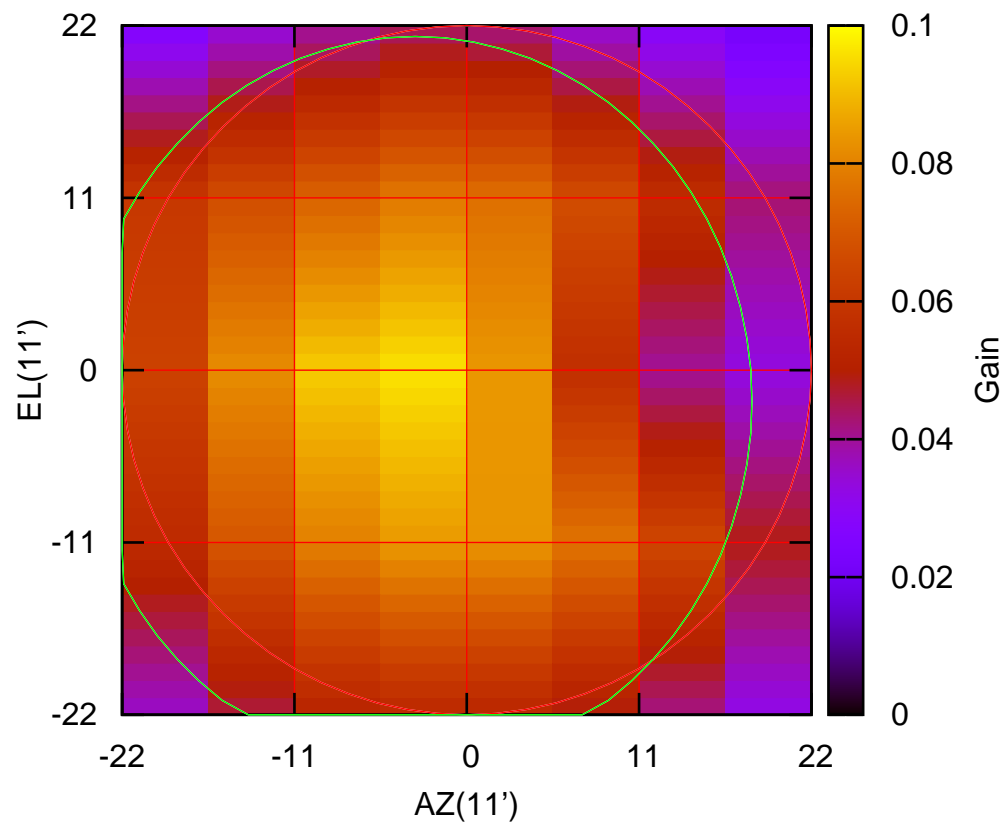
610 MHz.



C05-175 ELOFF= -7.4' ELBEAM= 44.3'

C06-130 AZOFF= -3.3' AZBEAM= 43.0'

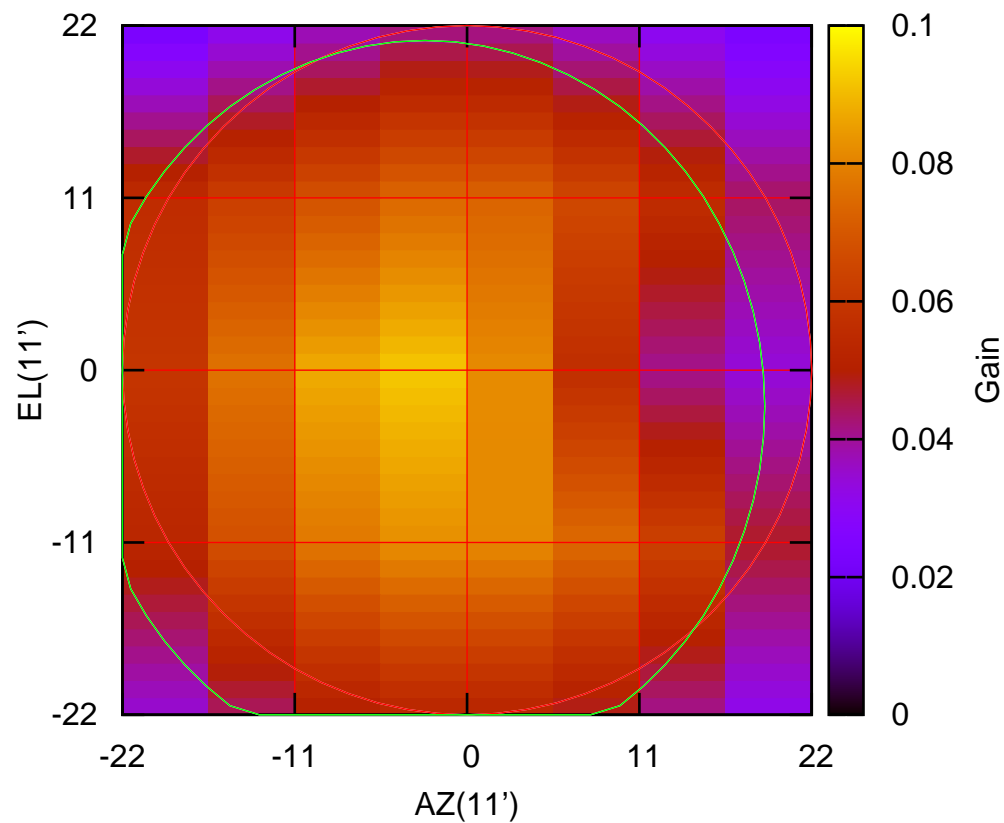
610 MHz.



C06-130 ELOFF= -2.0' ELBEAM= 46.6'

C06-175 AZOFF= -2.7' AZBEAM= 43.4'

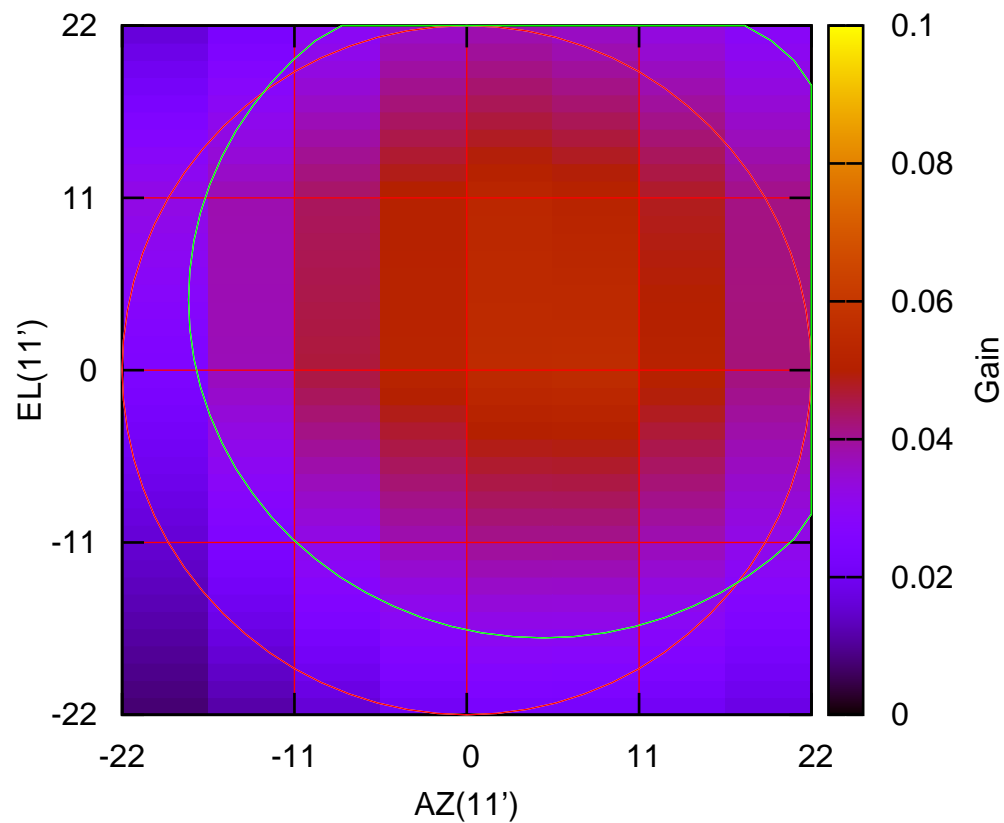
610 MHz.



C06-175 ELOFF= -2.3' ELBEAM= 46.7'

C08-130 AZOFF= 4.9' AZBEAM= 45.3'

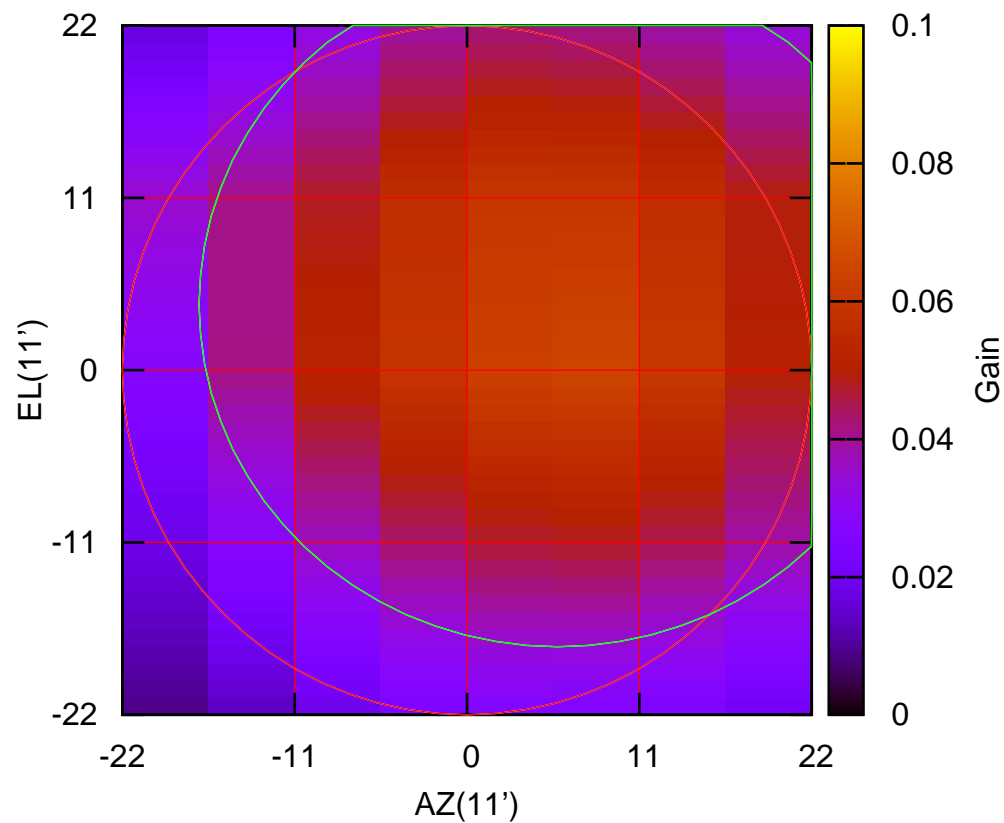
610 MHz.



C08-130 ELOFF= 4.5' ELBEAM= 43.2'

C08-175 AZOFF= 5.8' AZBEAM= 45.8'

610 MHz.

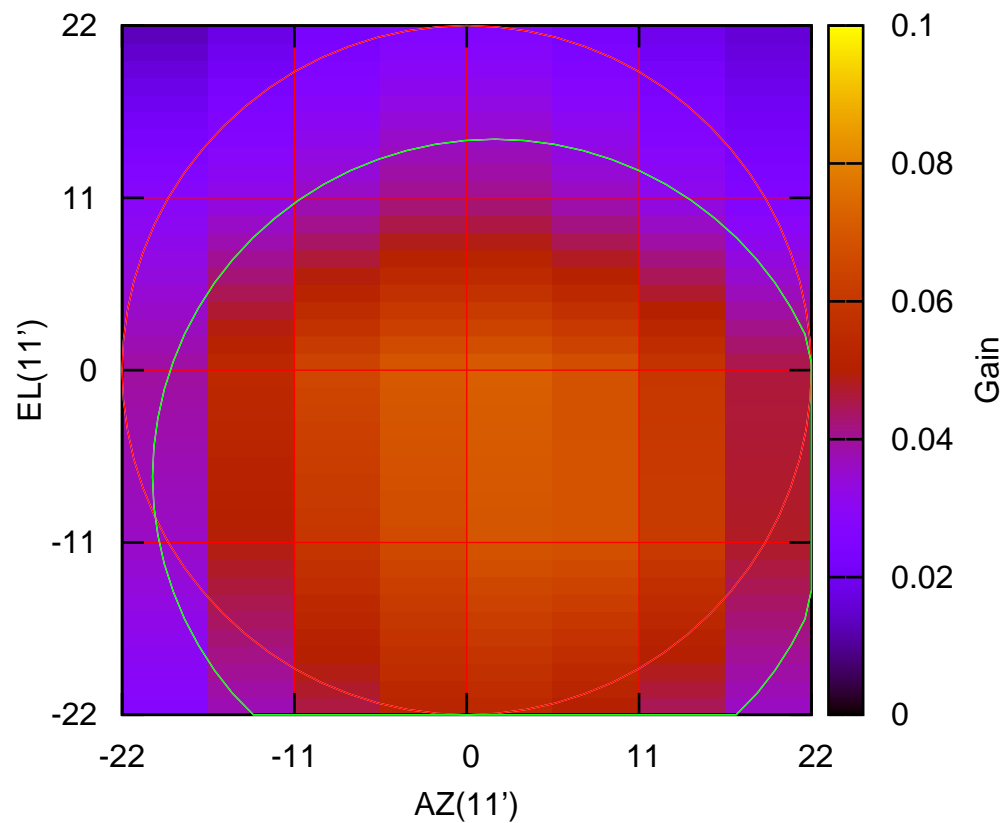


C08-175 ELOFF= 4.2' ELBEAM= 43.7'



C09-130 AZOFF= 1.8' AZBEAM= 43.7'

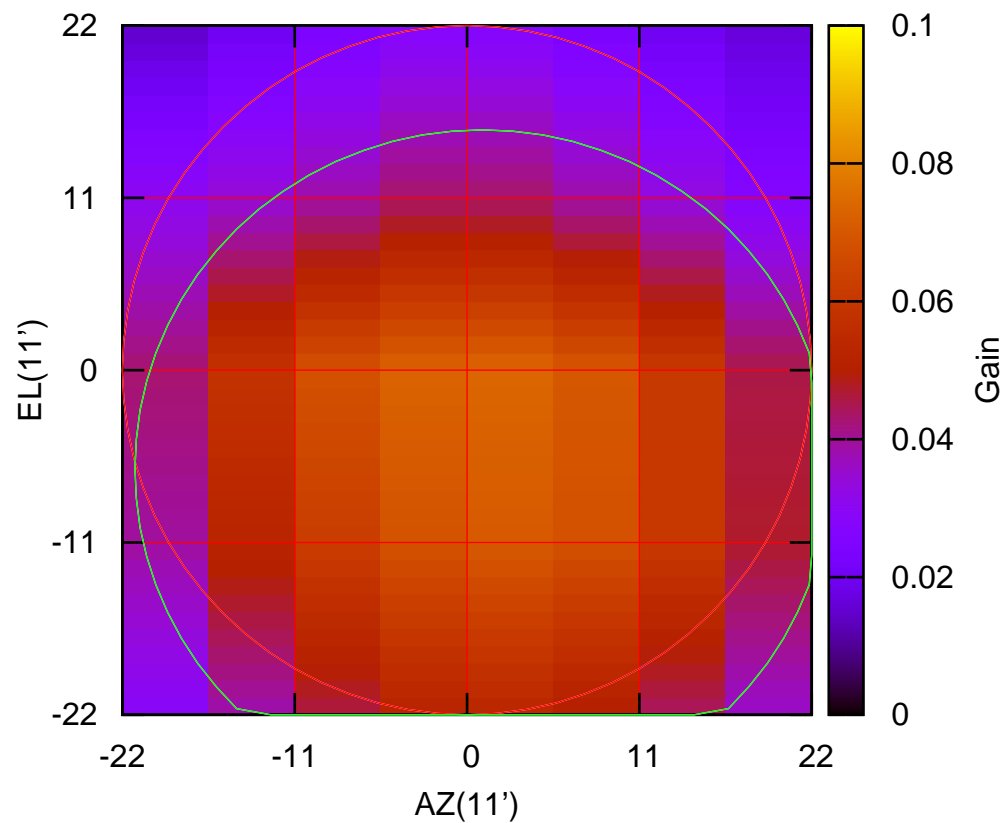
610 MHz.



C09-130 ELOFF= -6.8' ELBEAM= 43.1'

C09-175 AZOFF= 1.0' AZBEAM= 44.4'

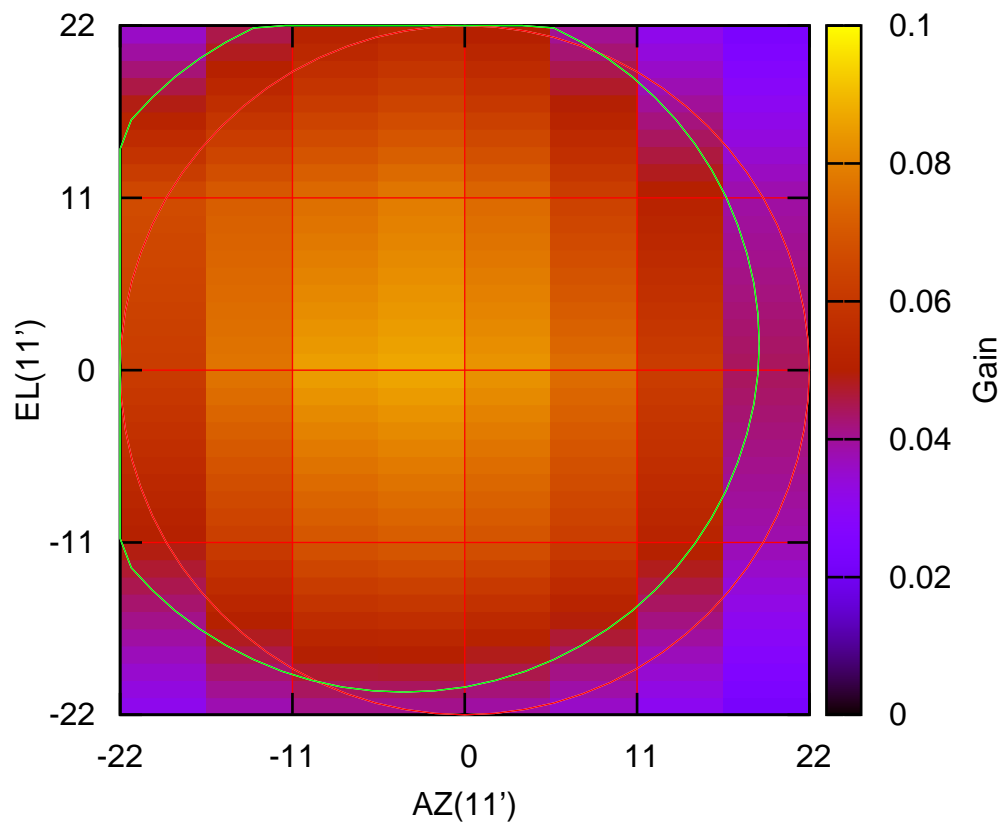
610 MHz.



C09-175 ELOFF= -6.3' ELBEAM= 43.3'

C10-130 AZOFF= -3.9' AZBEAM= 45.4'

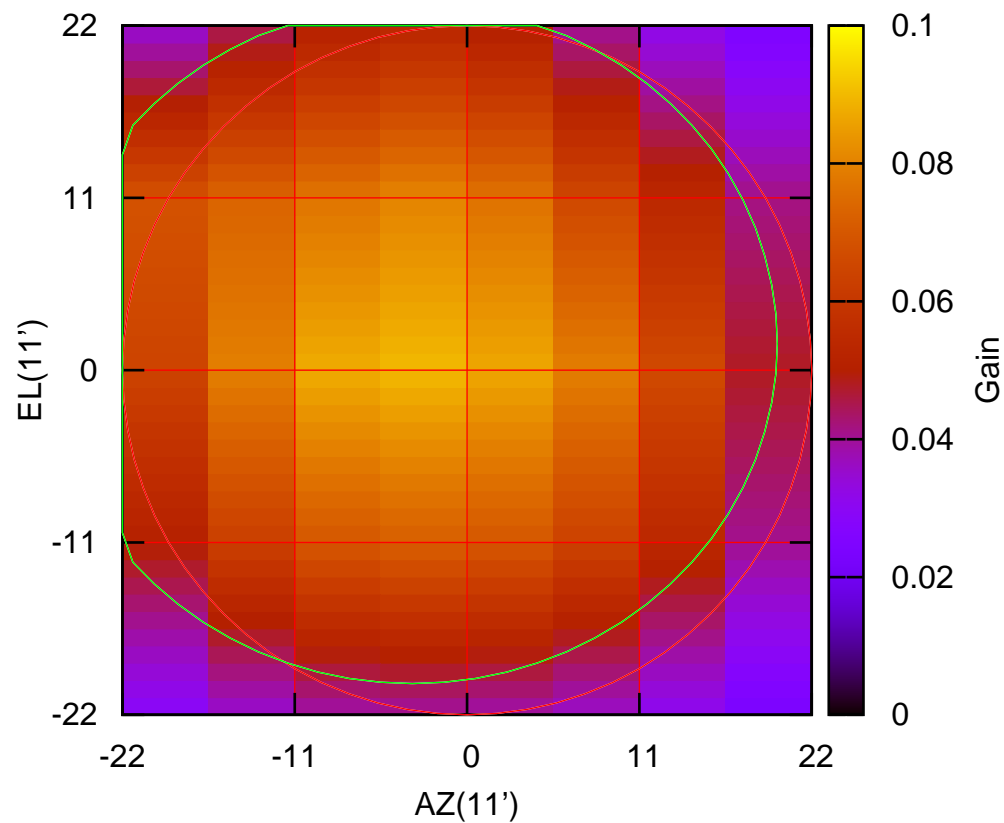
610 MHz.



C10-130 ELOFF= 1.7' ELBEAM= 44.5'

C10-175 AZOFF= -3.5' AZBEAM= 46.6'

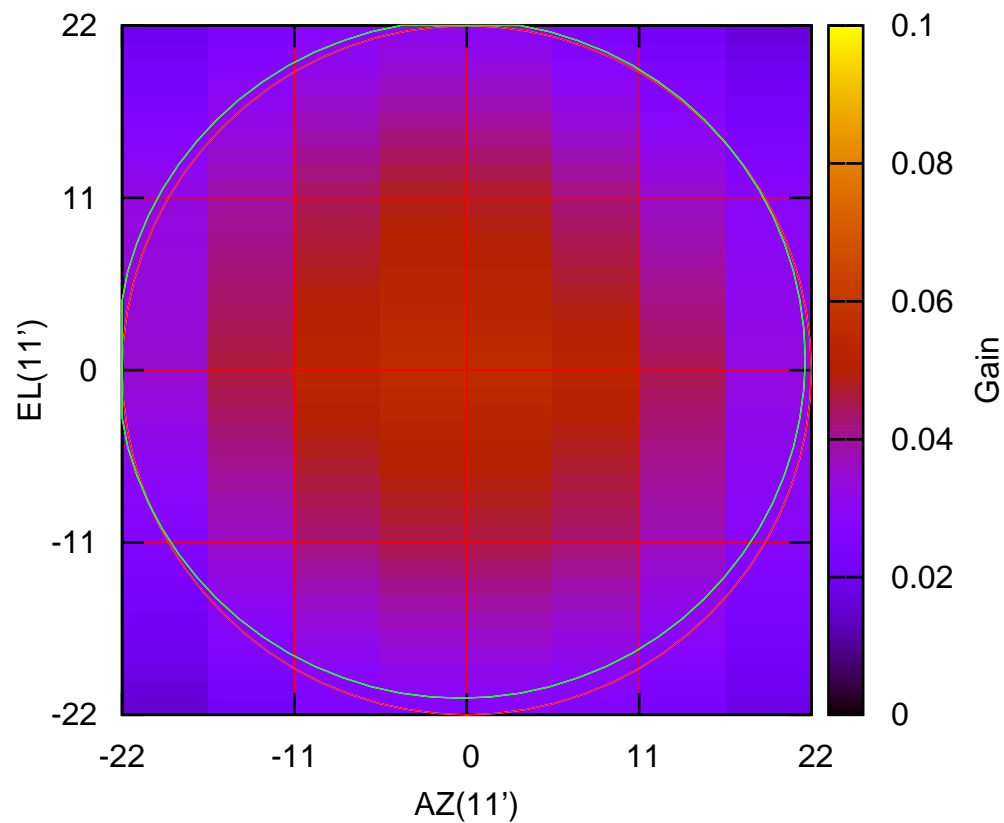
610 MHz.



C10-175 ELOFF= 1.7' ELBEAM= 43.4'

C11-130 AZOFF= -0.4' AZBEAM= 44.0'

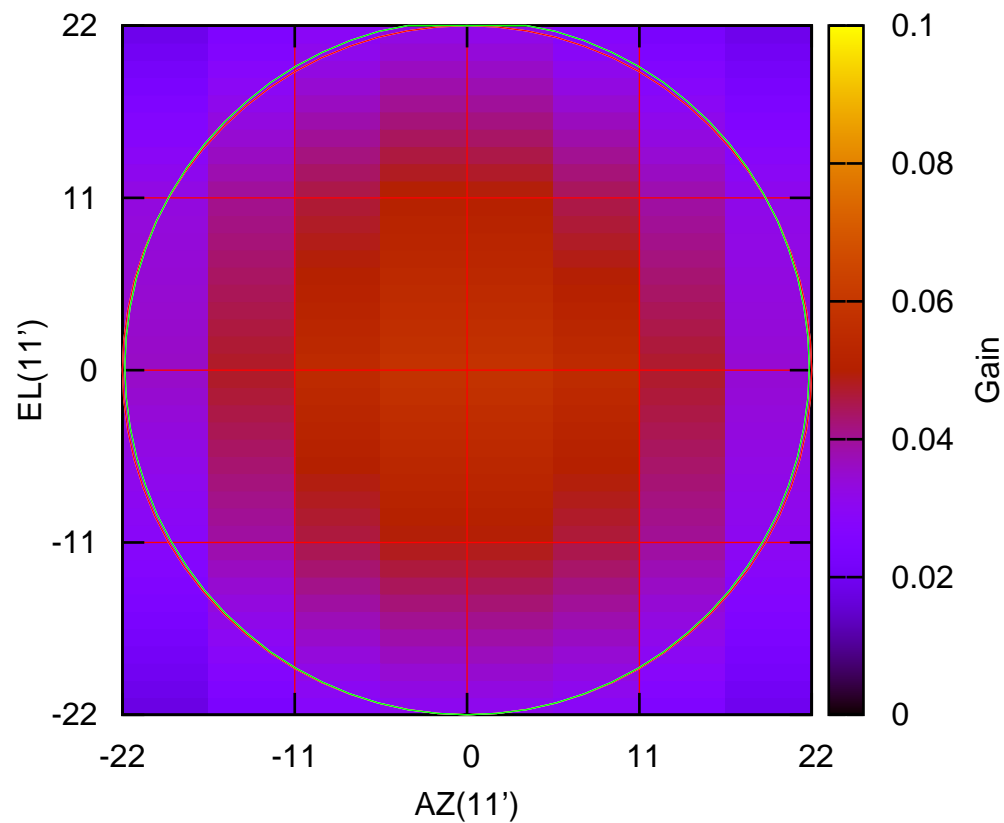
610 MHz.



C11-130 ELOFF= 0.7' ELBEAM= 43.3'

C11-175 AZOFF= -0.0' AZBEAM= 43.7'

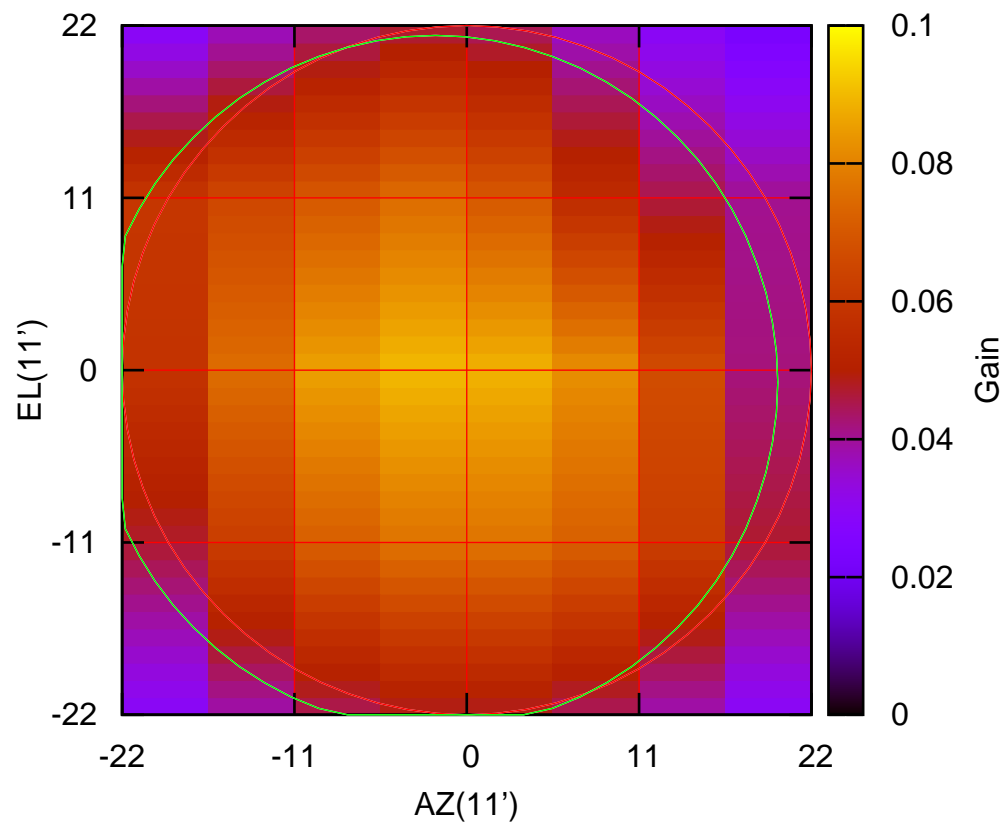
610 MHz.



C11-175 ELOFF= 0.2' ELBEAM= 44.4'

C12-130 AZOFF= -2.0' AZBEAM= 43.7'

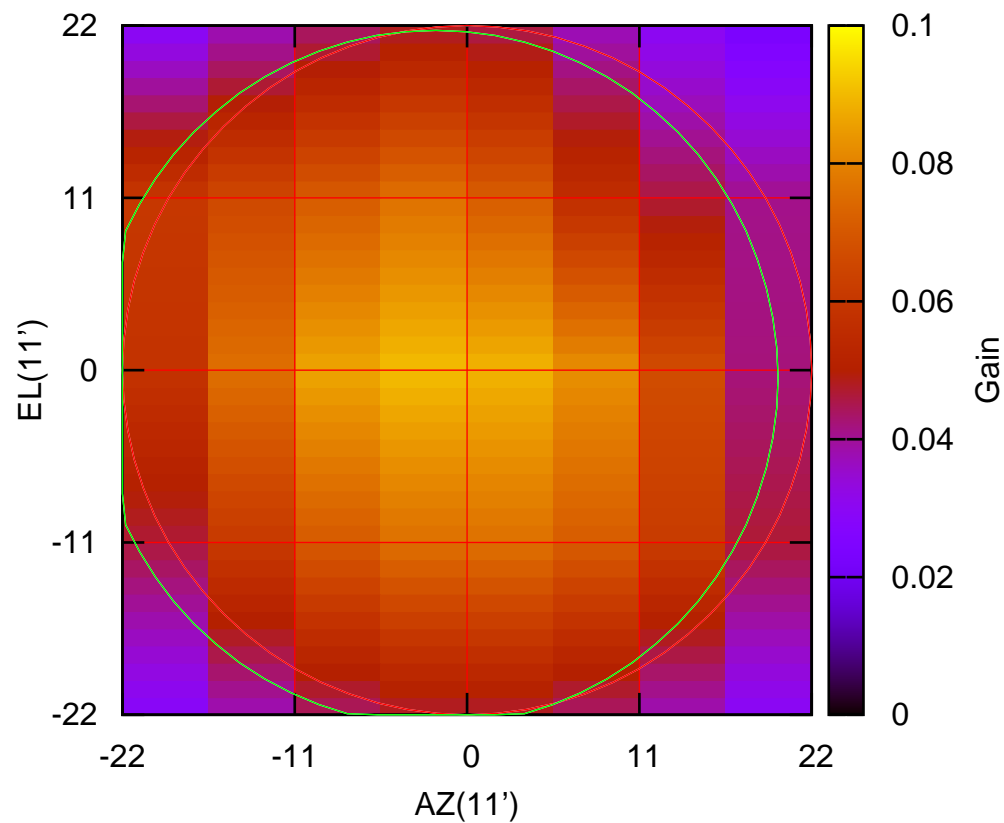
610 MHz.



C12-130 ELOFF= -0.8' ELBEAM= 44.3'

C12-175 AZOFF= -2.0' AZBEAM= 43.7'

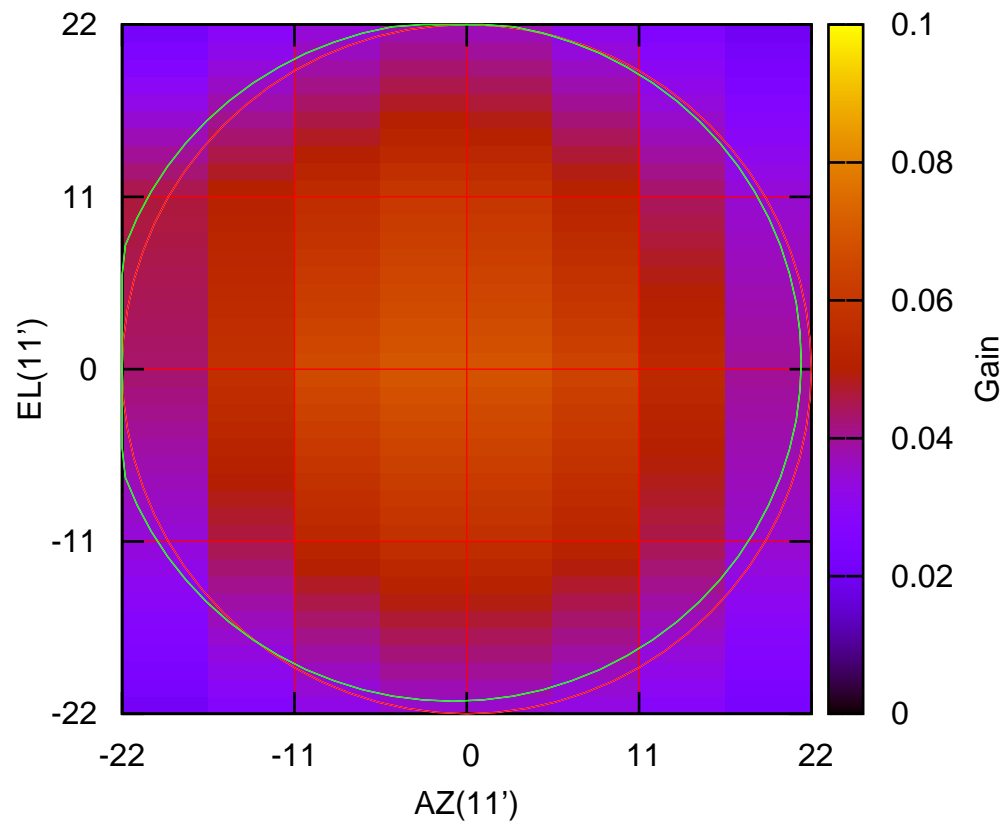
610 MHz.



C12-175 ELOFF= -0.5' ELBEAM= 44.4'

C13-130 AZOFF= -0.9' AZBEAM= 44.5'

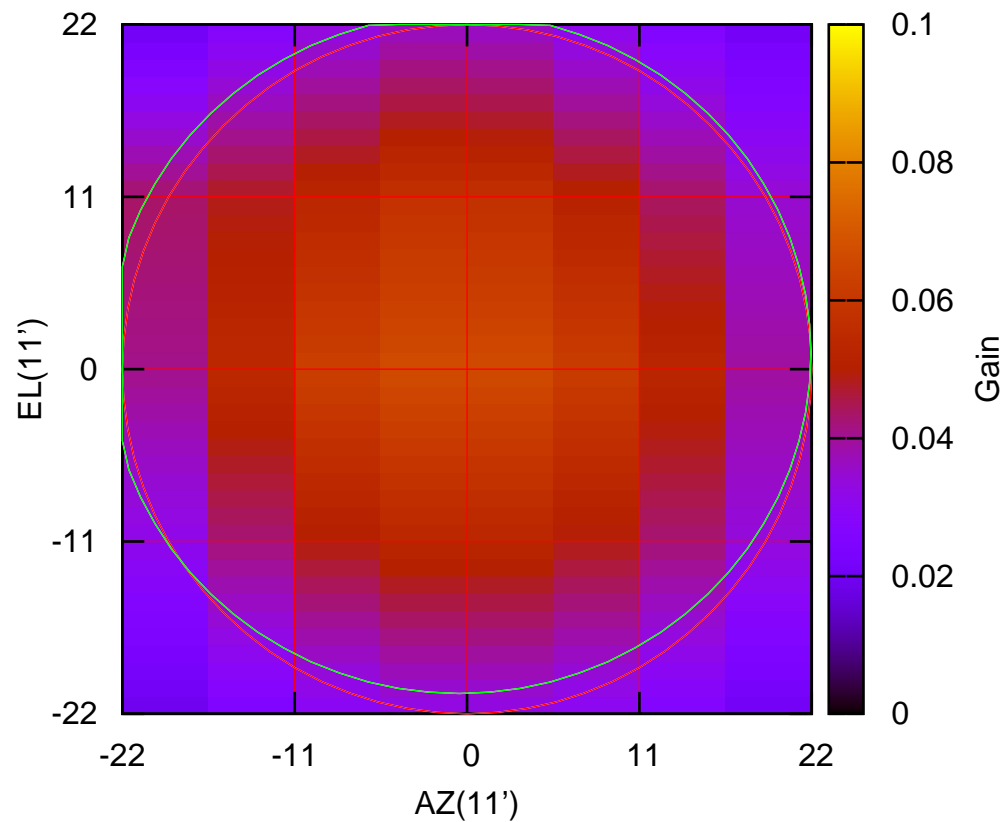
610 MHz.



C13-130 ELOFF= 0.5' ELBEAM= 43.4'

C13-175 AZOFF= -0.5' AZBEAM= 44.9'

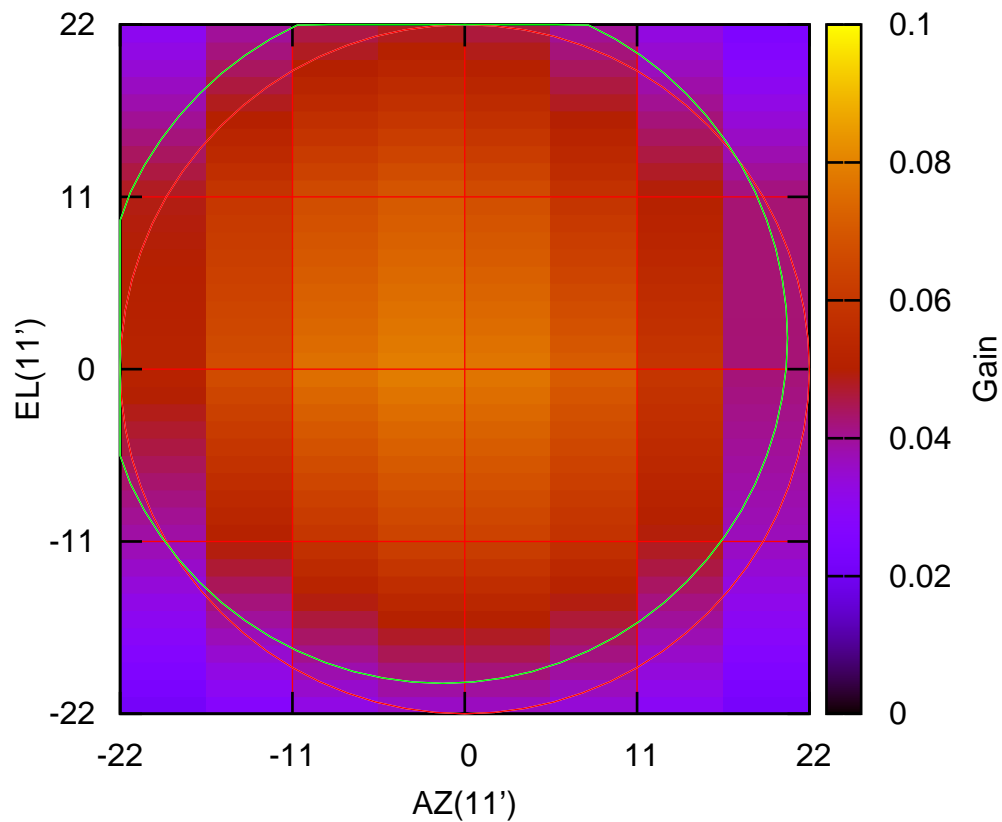
610 MHz.



C13-175 ELOFF= 1.0' ELBEAM= 43.4'

C14-130 AZOFF= -1.4' AZBEAM= 44.0'

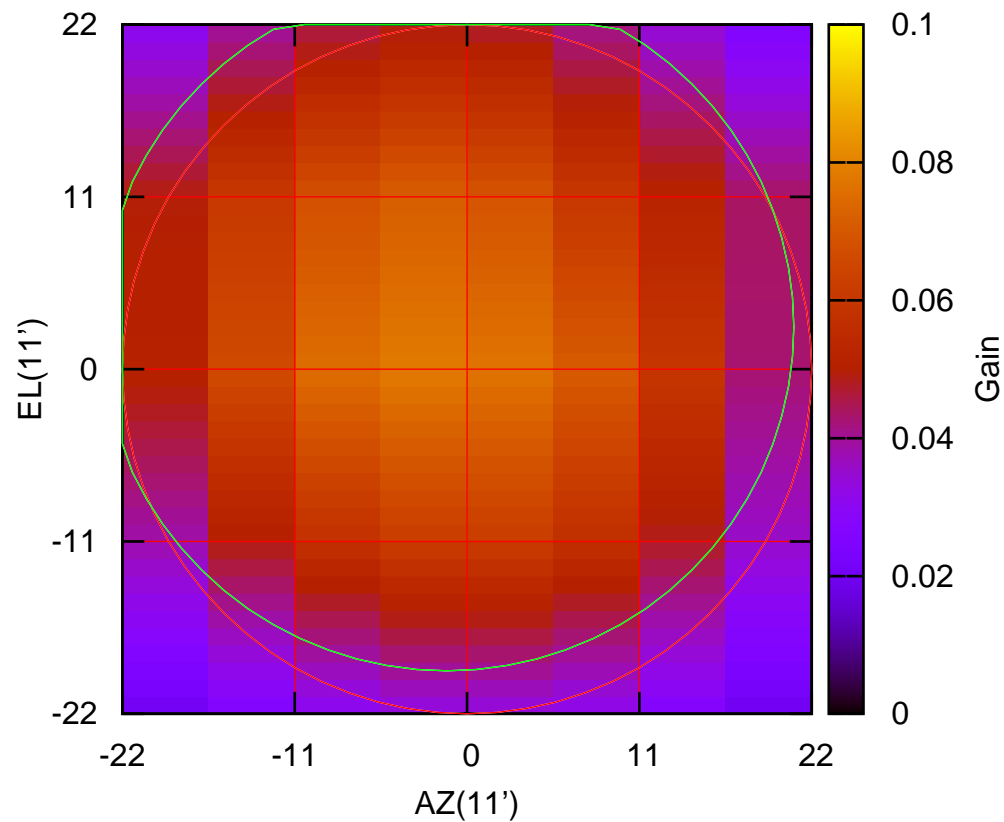
610 MHz.



C14-130 ELOFF= 2.0' ELBEAM= 44.1'

C14-175 AZOFF= -1.3' AZBEAM= 44.3'

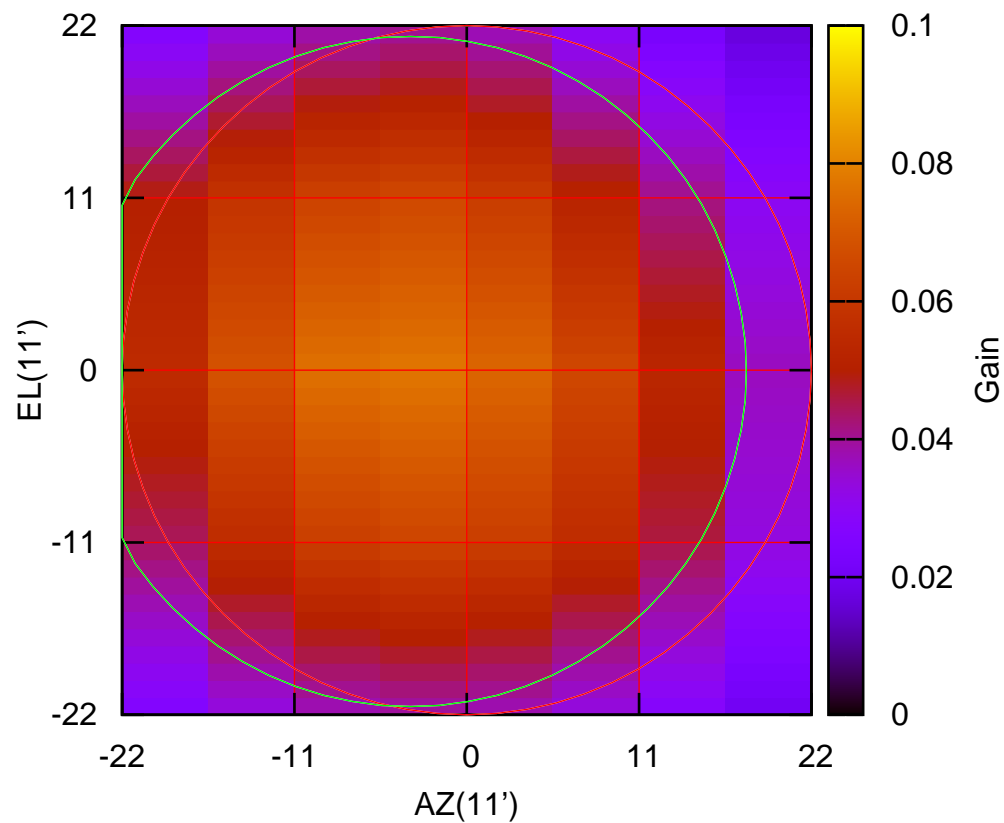
610 MHz.



C14-175 ELOFF= 2.7' ELBEAM= 43.9'

W01-130 AZOFF= -3.6' AZBEAM= 42.9'

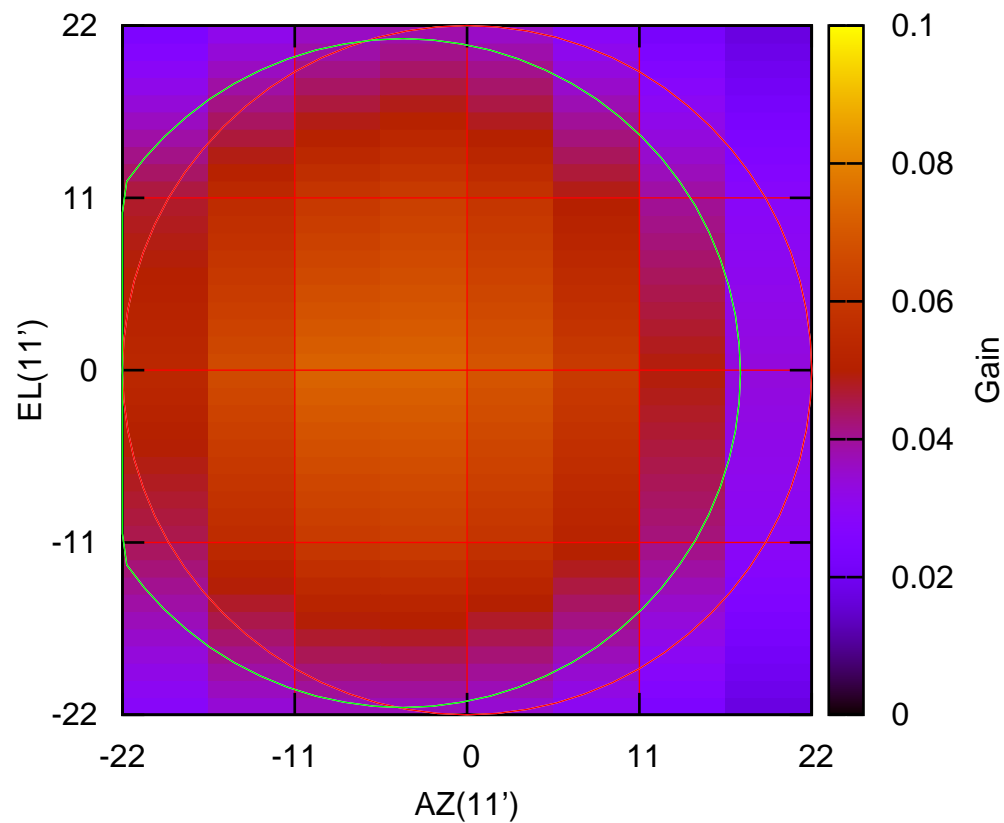
610 MHz.



W01-130 ELOFF= -0.1' ELBEAM= 42.8'

W01-175 AZOFF= -4.1' AZBEAM= 43.1'

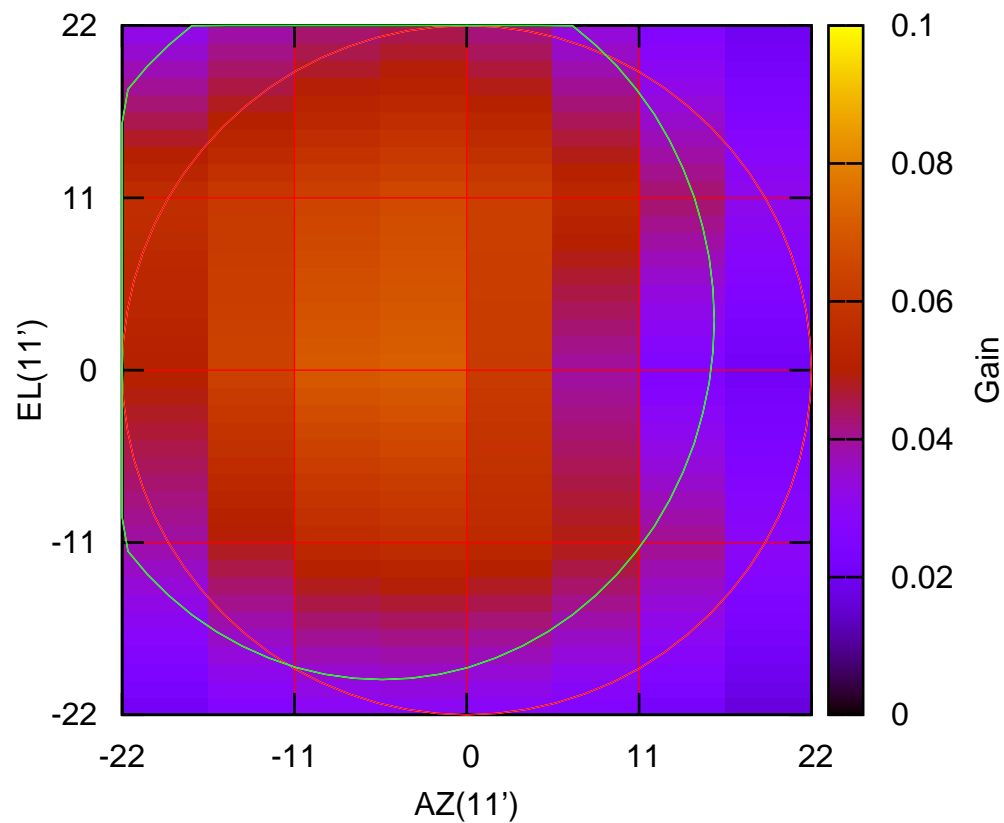
610 MHz.



W01-175 ELOFF= -0.2' ELBEAM= 42.7'

W02-130 AZOFF= -5.4' AZBEAM= 42.4'

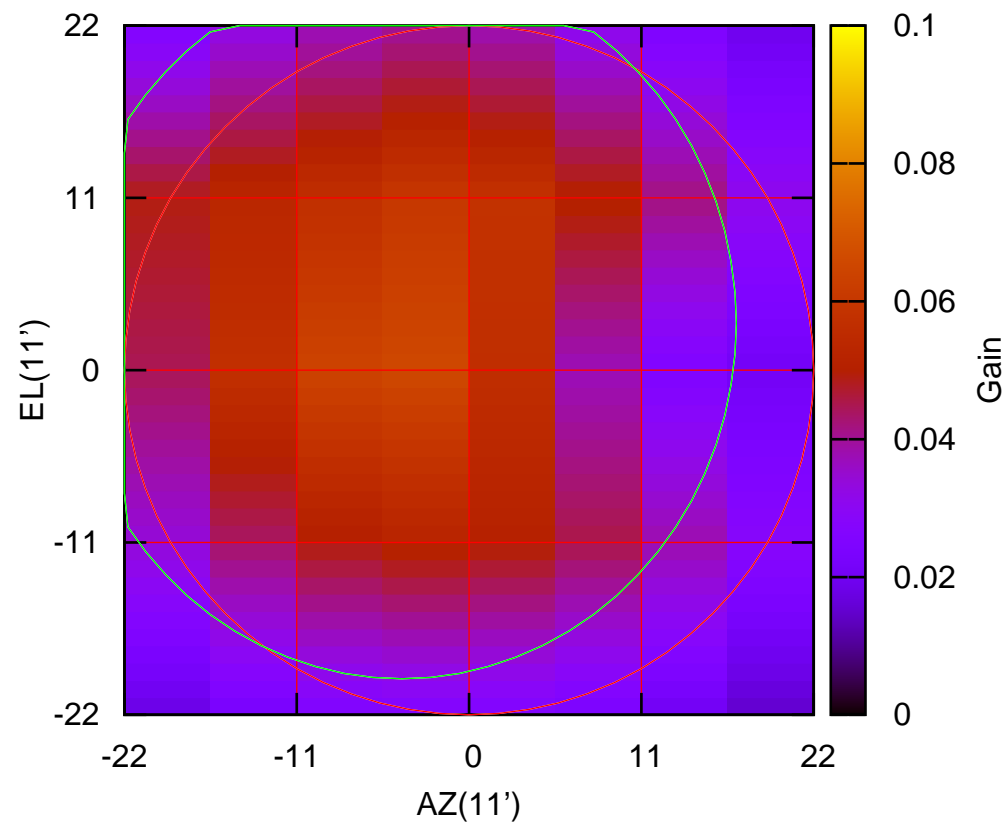
610 MHz.



W02-130 ELOFF= 3.2' ELBEAM= 45.9'

W02-175 AZOFF= -4.3' AZBEAM= 42.7'

610 MHz.

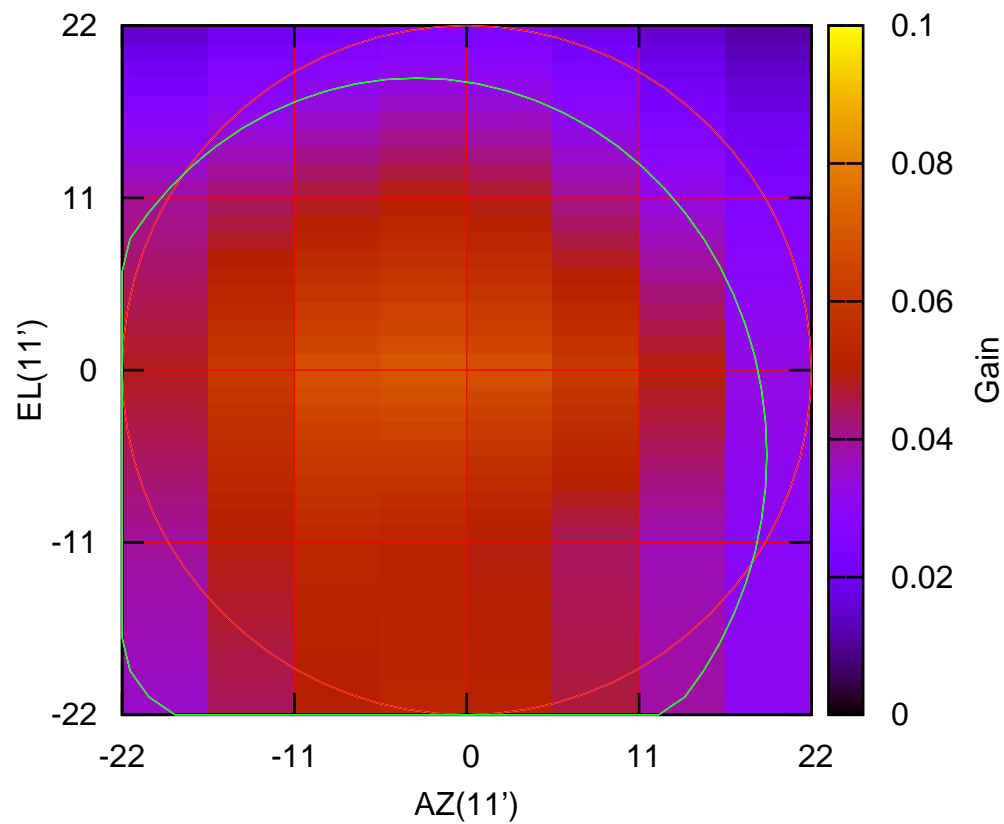


W02-175 ELOFF= 3.0' ELBEAM= 45.4'



W03-130 AZOFF= -3.2' AZBEAM= 44.7'

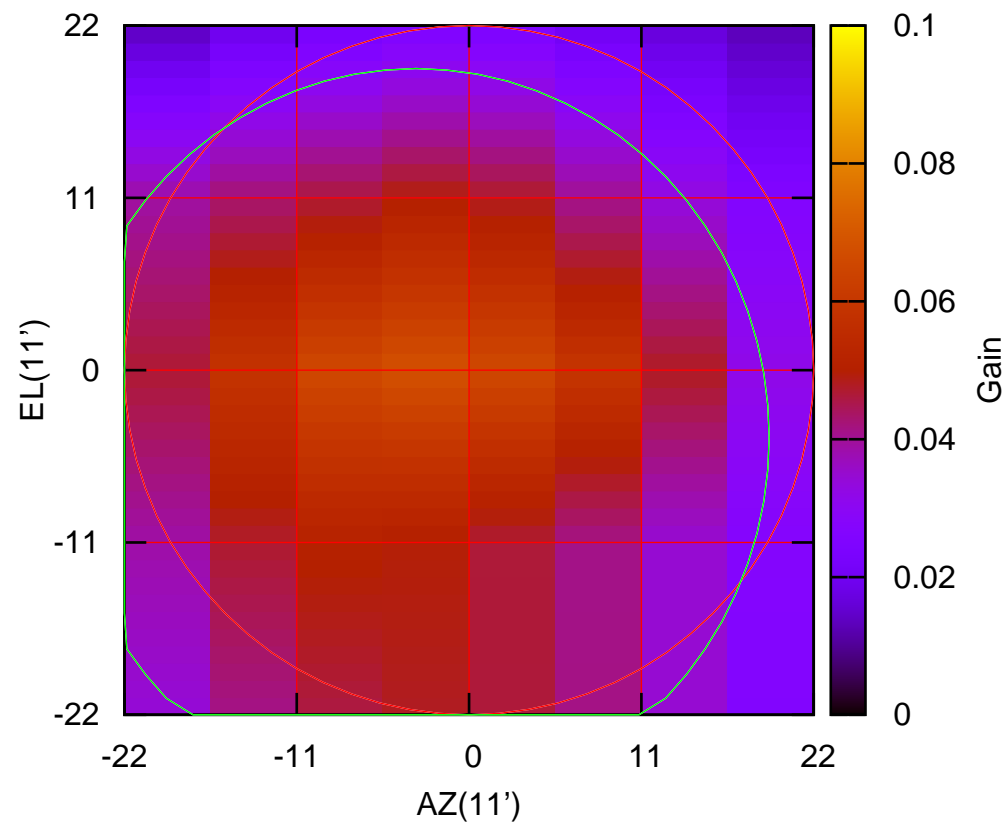
610 MHz.



W03-130 ELOFF= -5.4' ELBEAM= 48.1'

W03-175 AZOFF= -3.4' AZBEAM= 45.1'

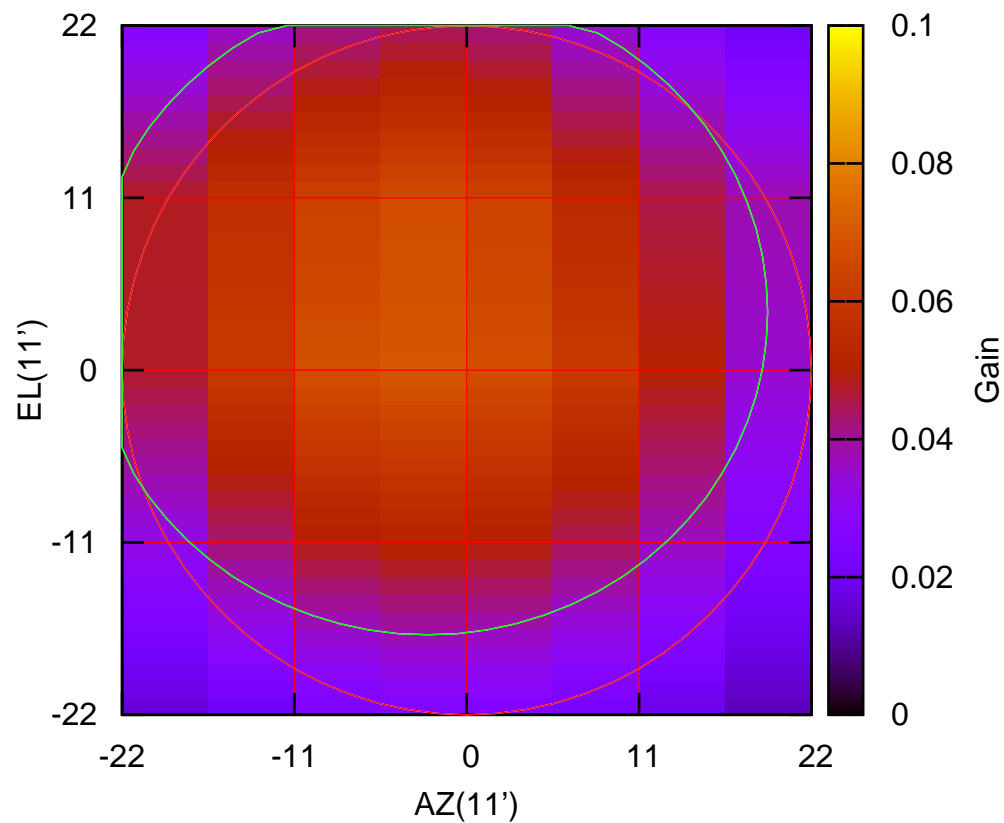
610 MHz.



W03-175 ELOFF= -4.3' ELBEAM= 47.1'

W04-130 AZOFF= -2.5' AZBEAM= 43.4'

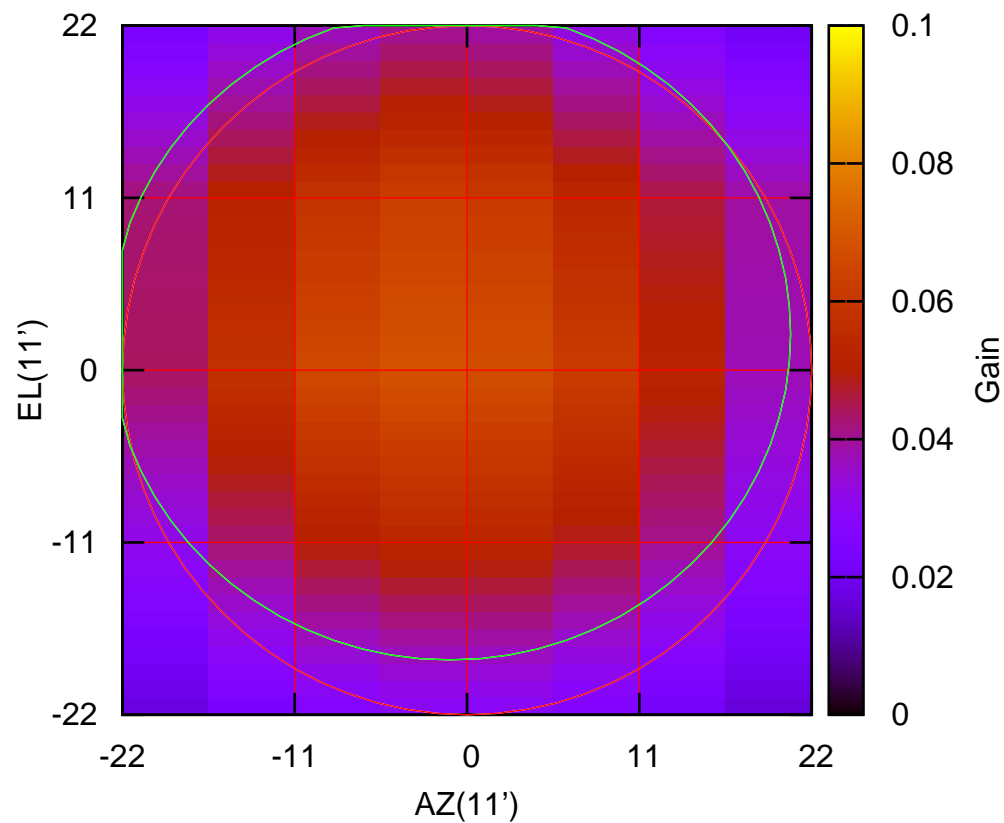
610 MHz.



W04-130 ELOFF= 3.7' ELBEAM= 41.2'

W04-175 AZOFF= -1.1' AZBEAM= 43.5'

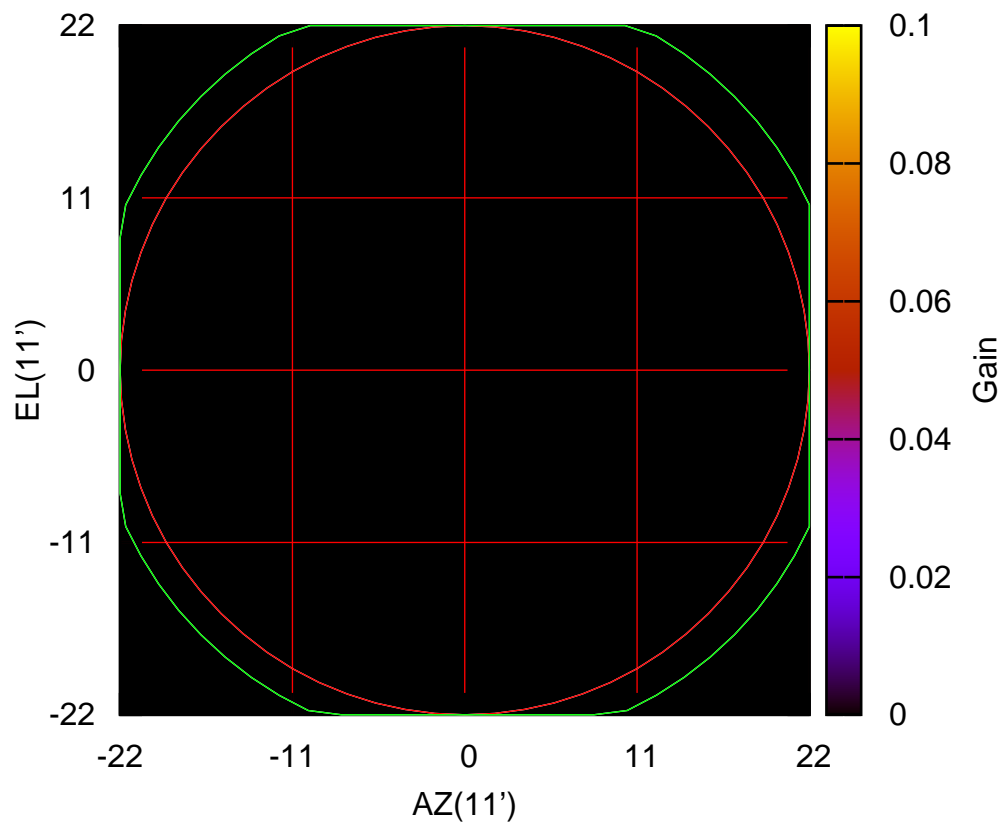
610 MHz.



W04-175 ELOFF= 2.3' ELBEAM= 41.6'

W05-130 AZOFF= 0.2' AZBEAM= 48.2'

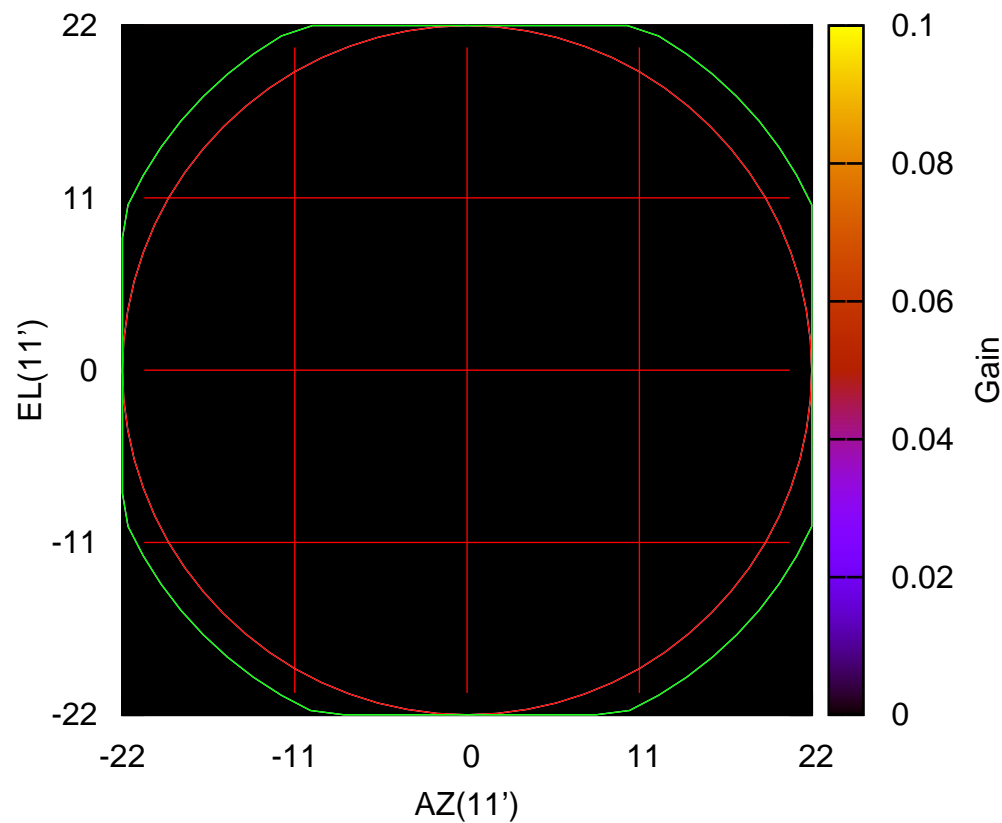
610 MHz.



W05-130 ELOFF= 0.3' ELBEAM= 48.6'

W05-175 AZOFF= 0.2' AZBEAM= 48.2'

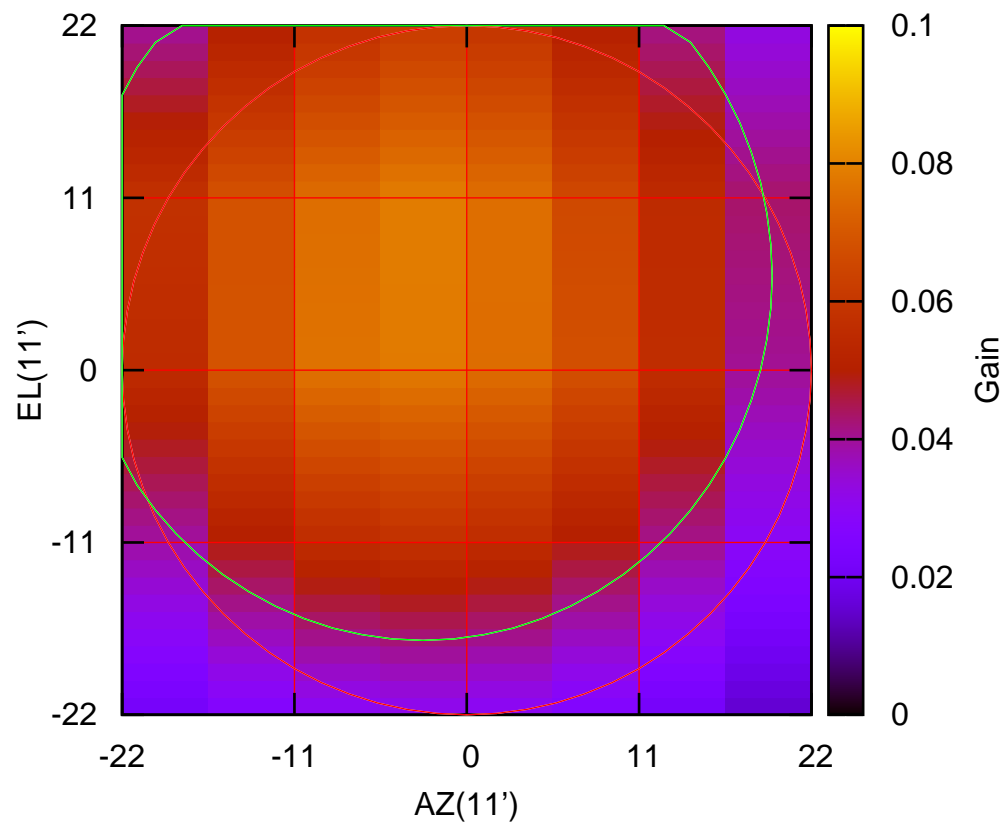
610 MHz.



W05-175 ELOFF= 0.3' ELBEAM= 48.6'

W06-130 AZOFF= -2.8' AZBEAM= 44.6'

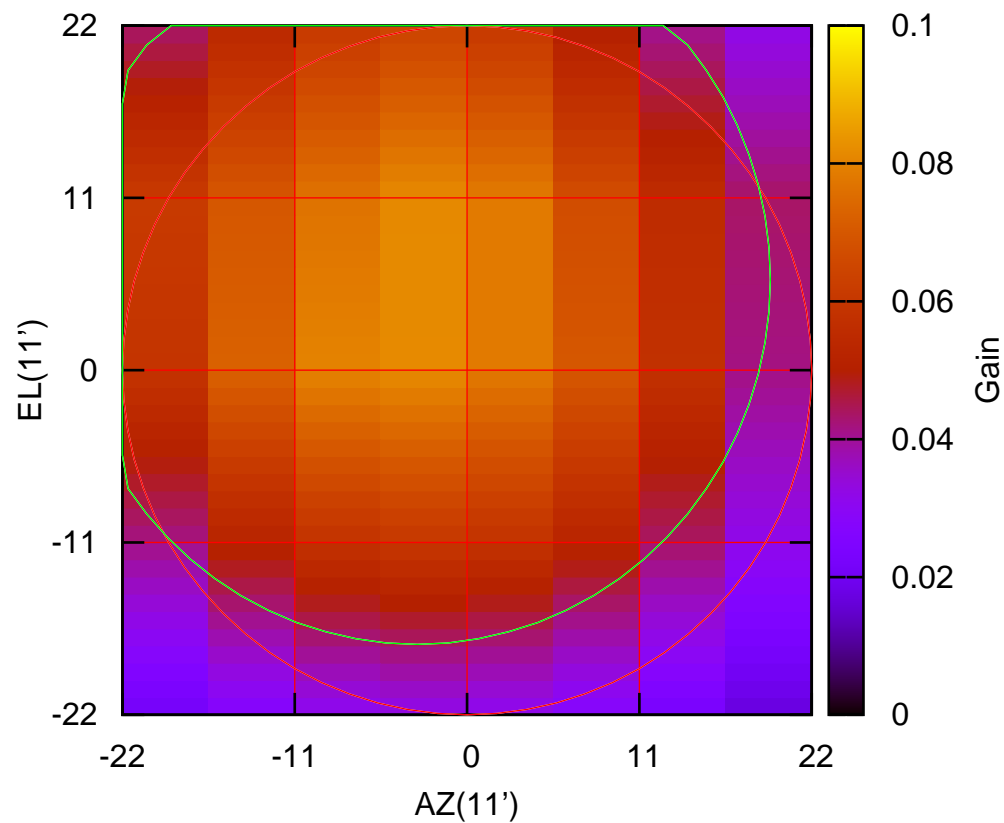
610 MHz.



W06-130 ELOFF= 6.0' ELBEAM= 46.5'

W06-175 AZOFF= -3.2' AZBEAM= 45.1'

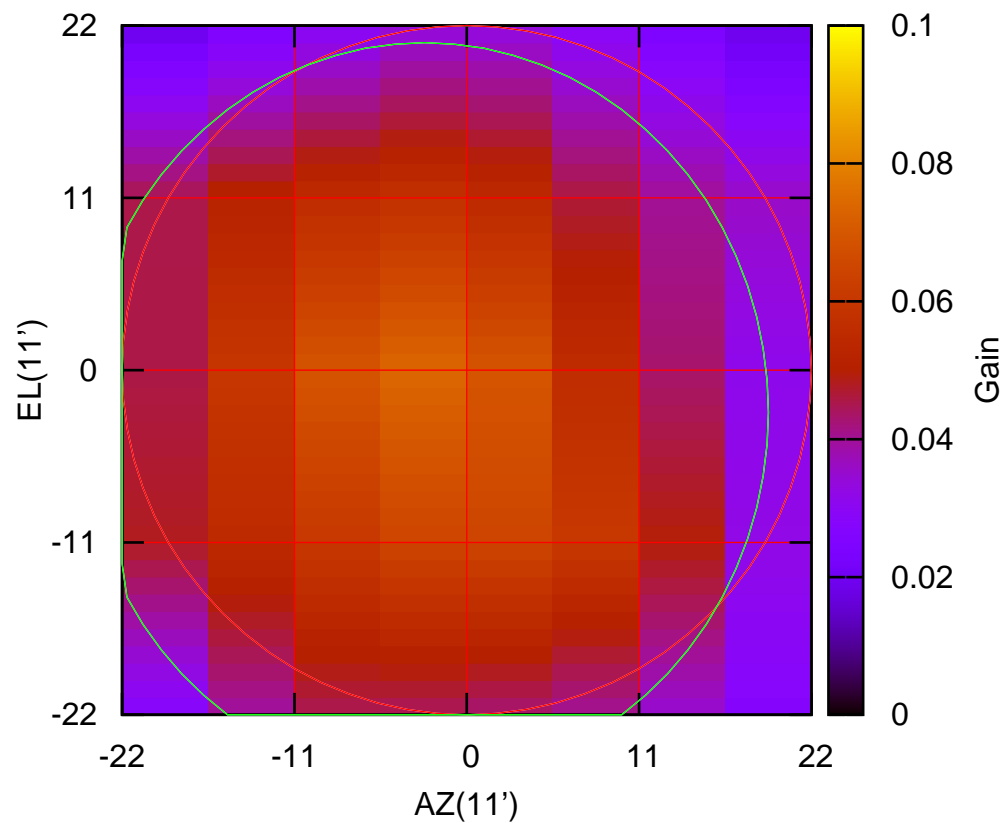
610 MHz.



W06-175 ELOFF= 5.8' ELBEAM= 46.6'

E02-130 AZOFF= -2.7' AZBEAM= 43.9'

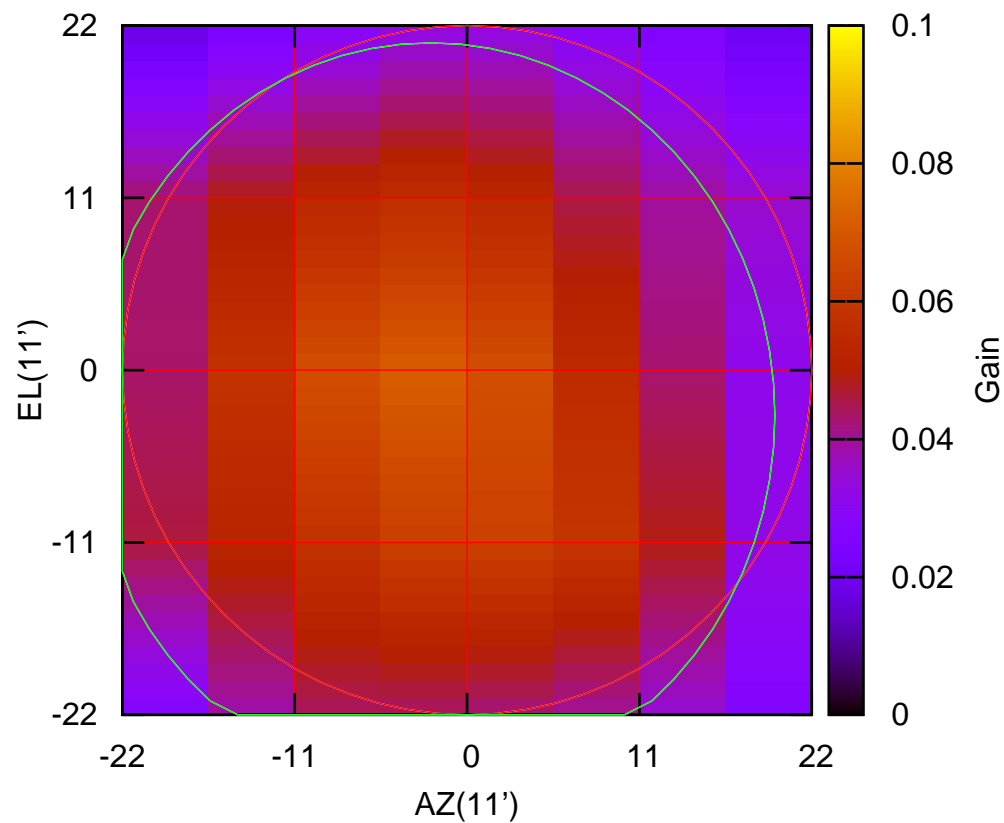
610 MHz.



E02-130 ELOFF= -2.7' ELBEAM= 47.2'

E02-175 AZOFF= -2.3' AZBEAM= 43.9'

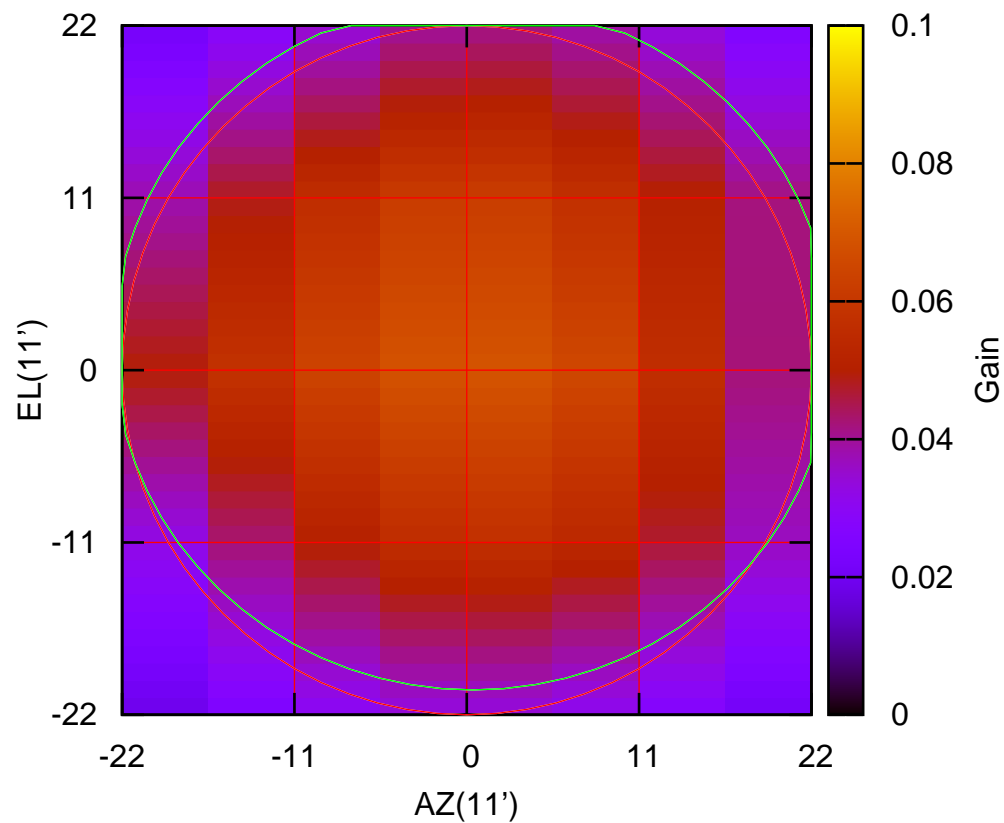
610 MHz.



E02-175 ELOFF= -2.9' ELBEAM= 47.6'

E03-130 AZOFF= 0.4' AZBEAM= 45.9'

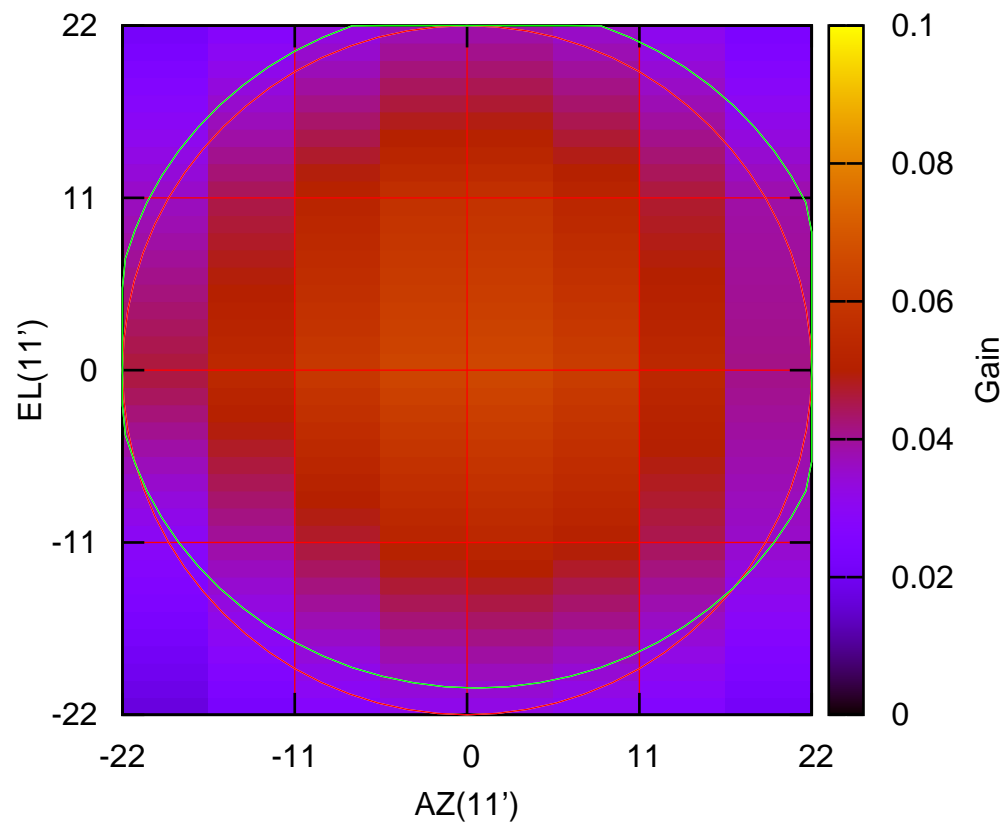
610 MHz.



E03-130 ELOFF= 1.6' ELBEAM= 44.0'

E03-175 AZOFF= 0.6' AZBEAM= 46.4'

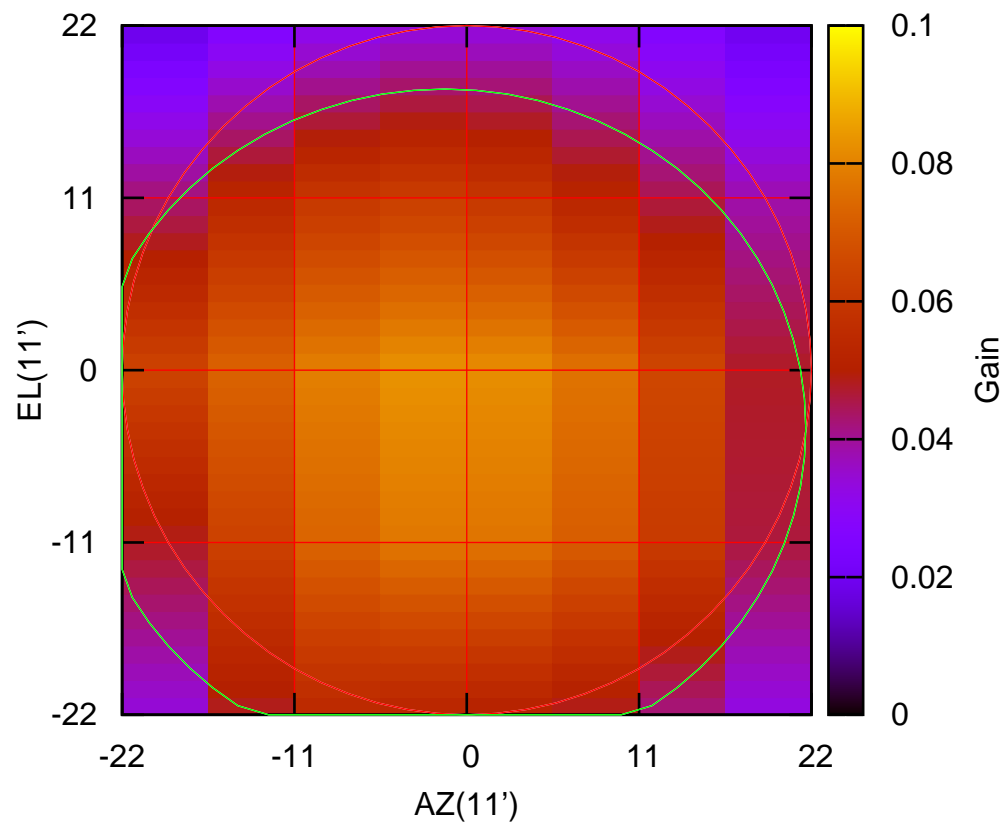
610 MHz.



E03-175 ELOFF= 1.5' ELBEAM= 43.6'

E04-130 AZOFF= -1.4' AZBEAM= 46.1'

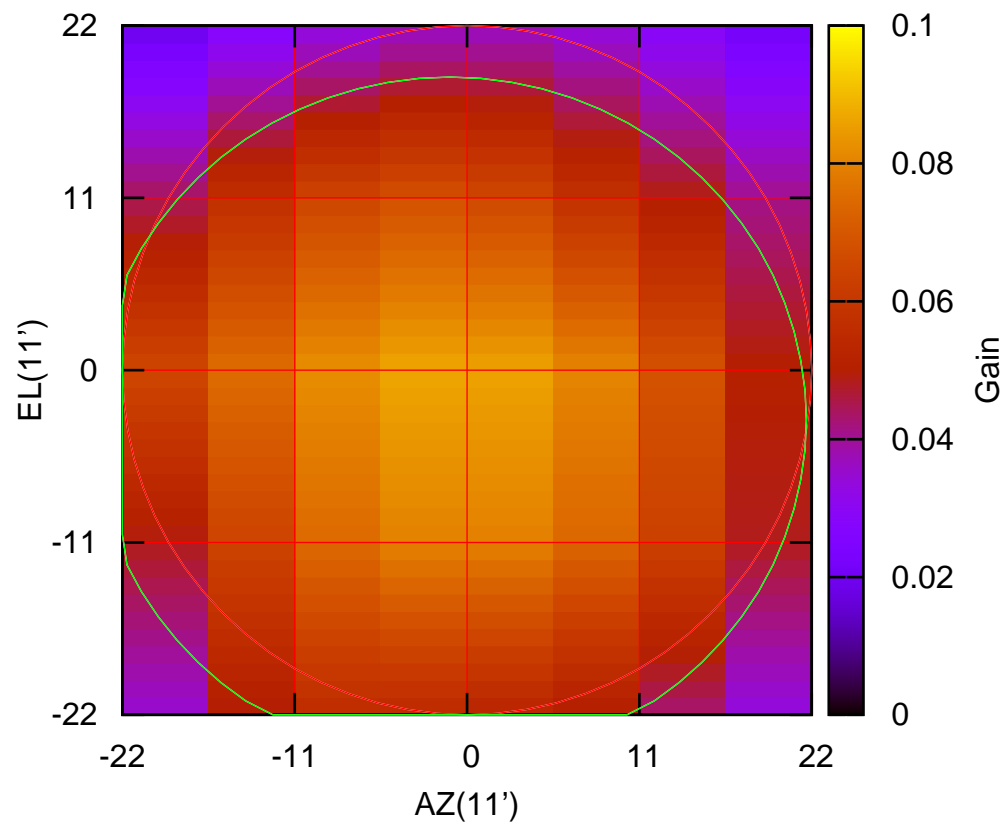
610 MHz.



E04-130 ELOFF= -3.7' ELBEAM= 43.3'

E04-175 AZOFF= -1.1' AZBEAM= 45.5'

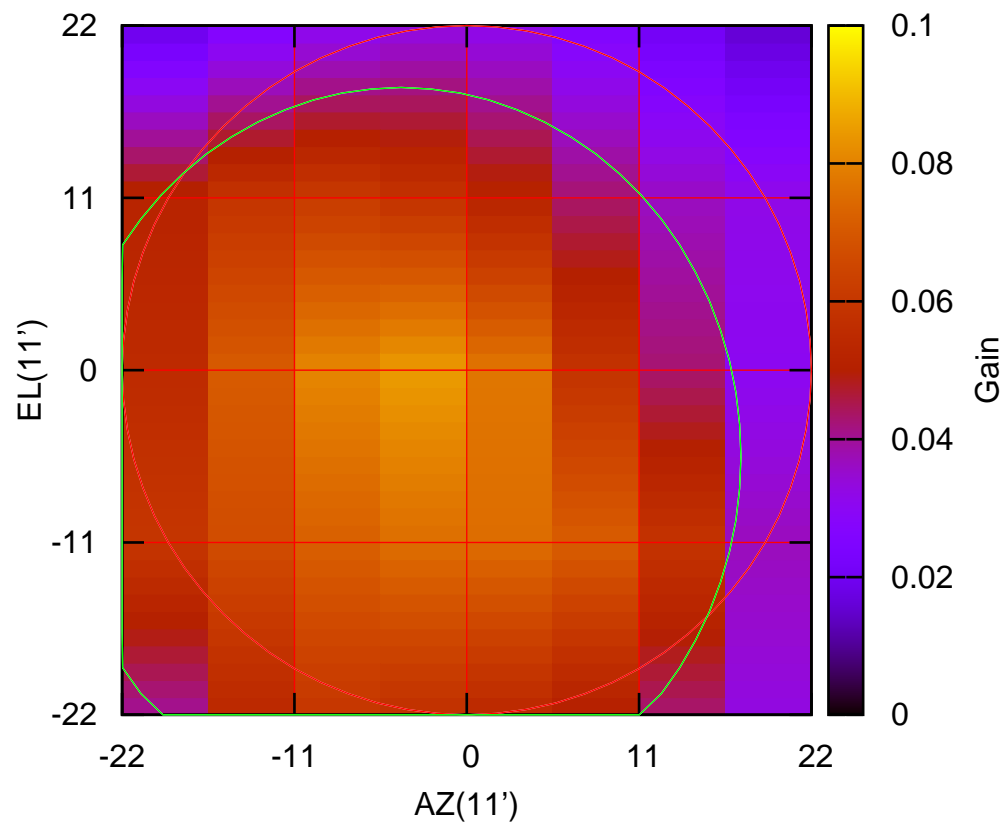
610 MHz.



E04-175 ELOFF= -3.2' ELBEAM= 43.8'

E05-130 AZOFF= -4.2' AZBEAM= 43.4'

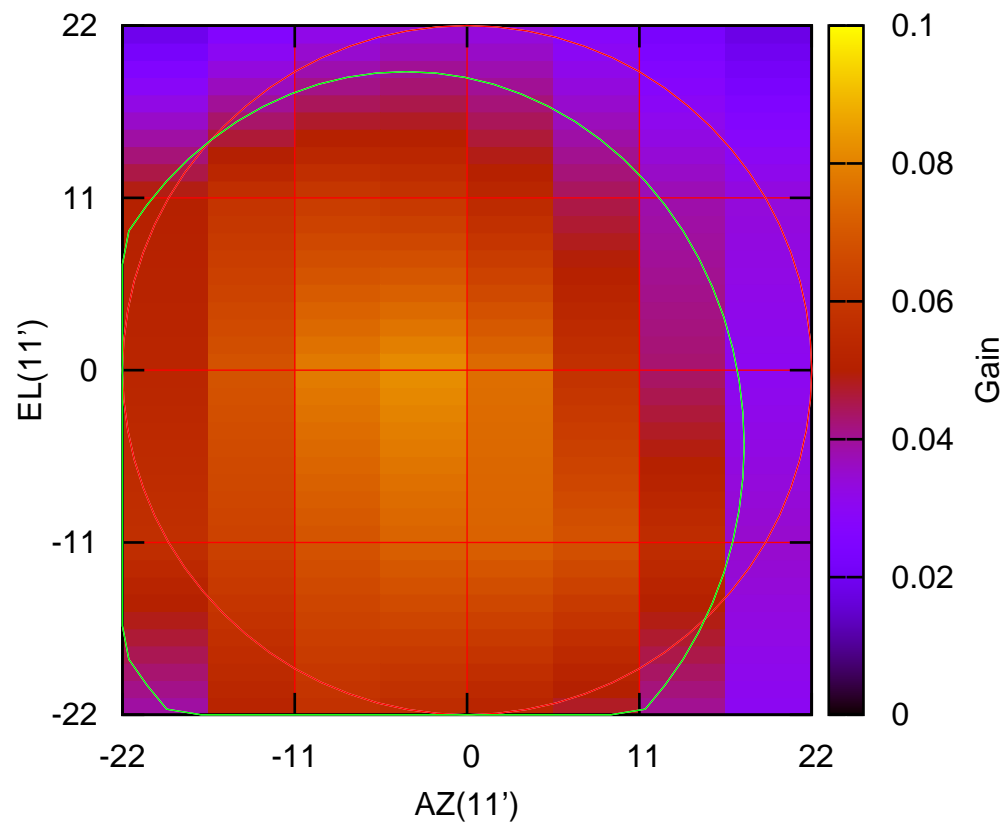
610 MHz.



E05-130 ELOFF= -5.5' ELBEAM= 47.1'

E05-175 AZOFF= -3.9' AZBEAM= 43.2'

610 MHz.

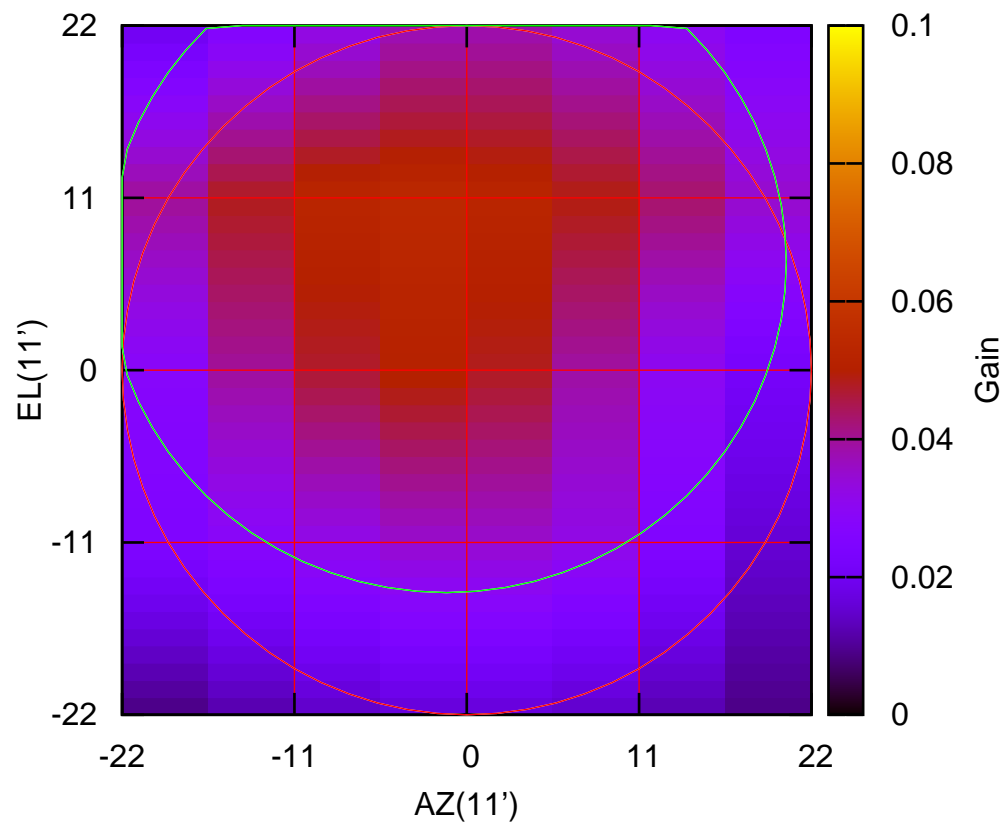


E05-175 ELOFF= -4.8' ELBEAM= 47.7'



E06-130 AZOFF= -1.3' AZBEAM= 43.4'

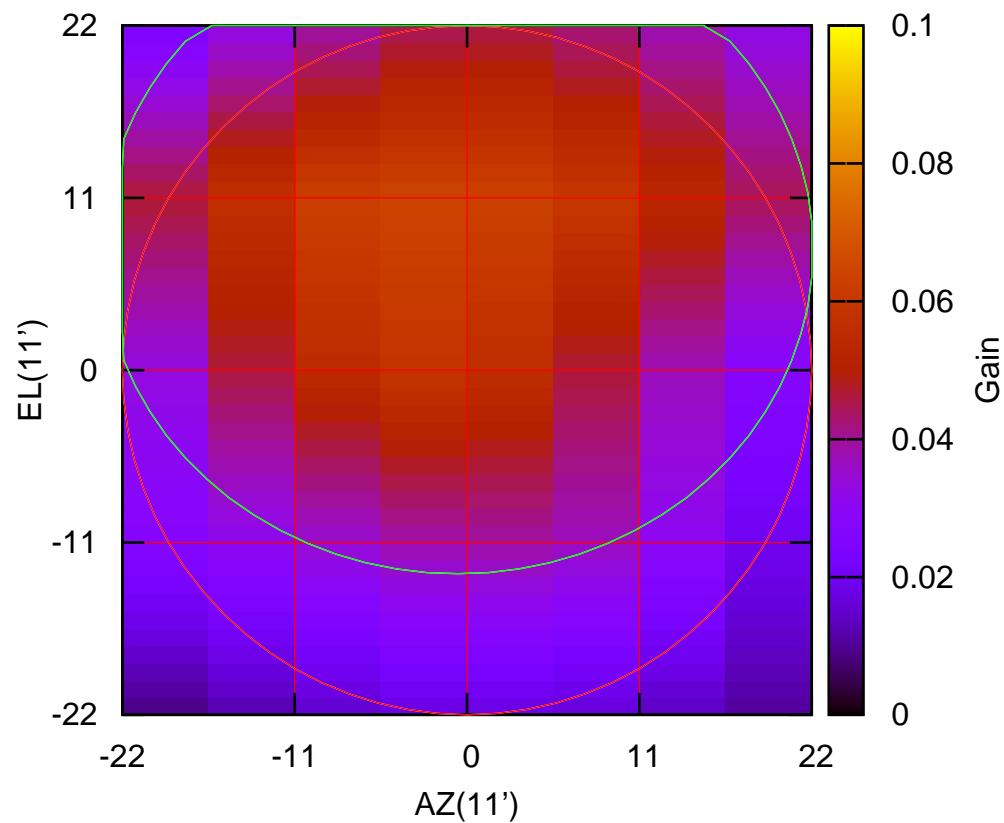
610 MHz.



E06-130 ELOFF= 6.9' ELBEAM= 42.2'

E06-175 AZOFF= -0.6' AZBEAM= 45.4'

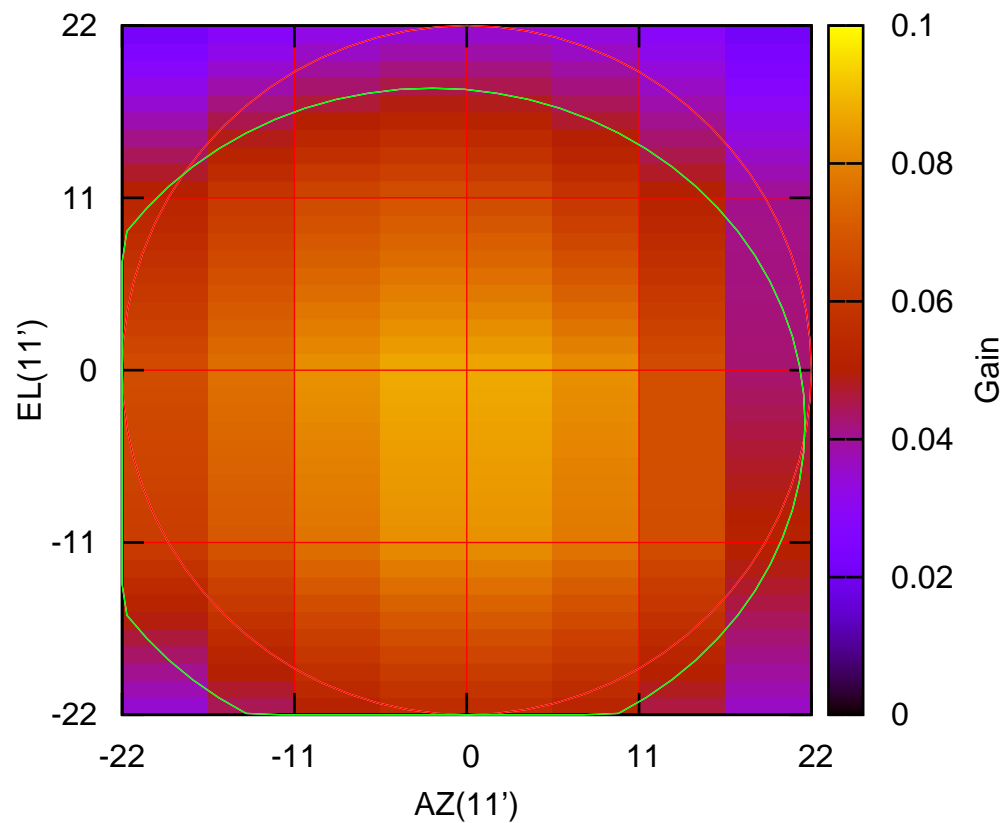
610 MHz.



E06-175 ELOFF= 7.7' ELBEAM= 41.4'

S01-130 AZOFF= -2.2' AZBEAM= 47.6'

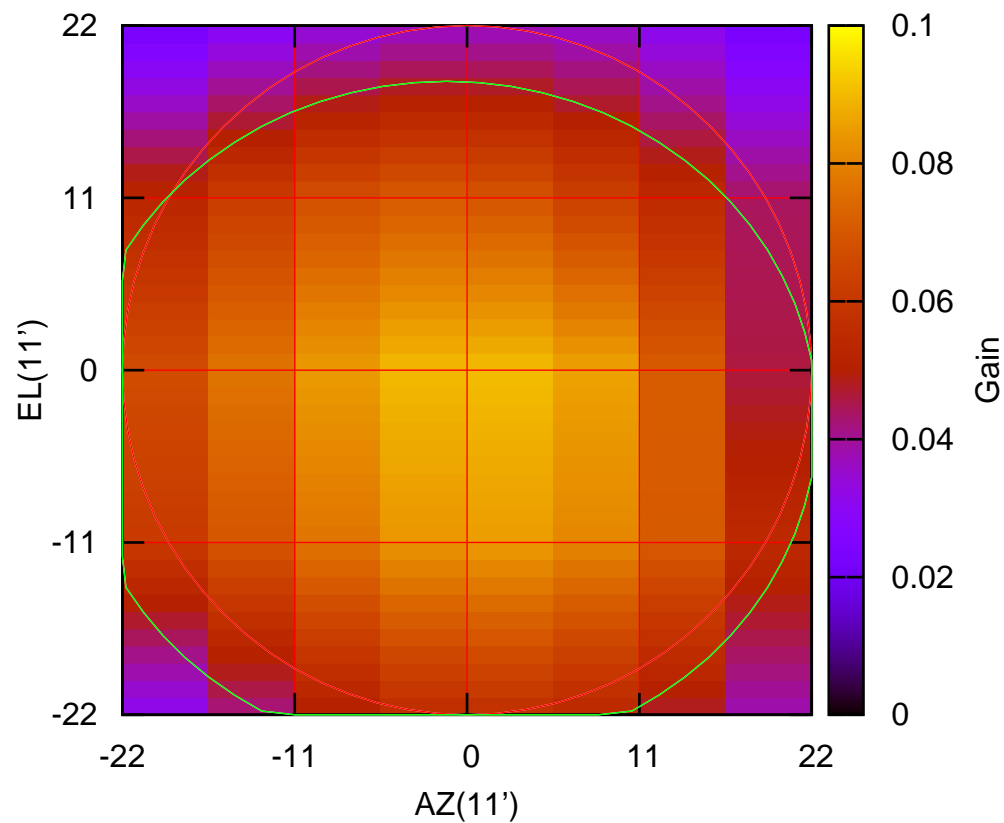
610 MHz.



S01-130 ELOFF= -3.4' ELBEAM= 42.8'

S01-175 AZOFF= -1.3' AZBEAM= 47.3'

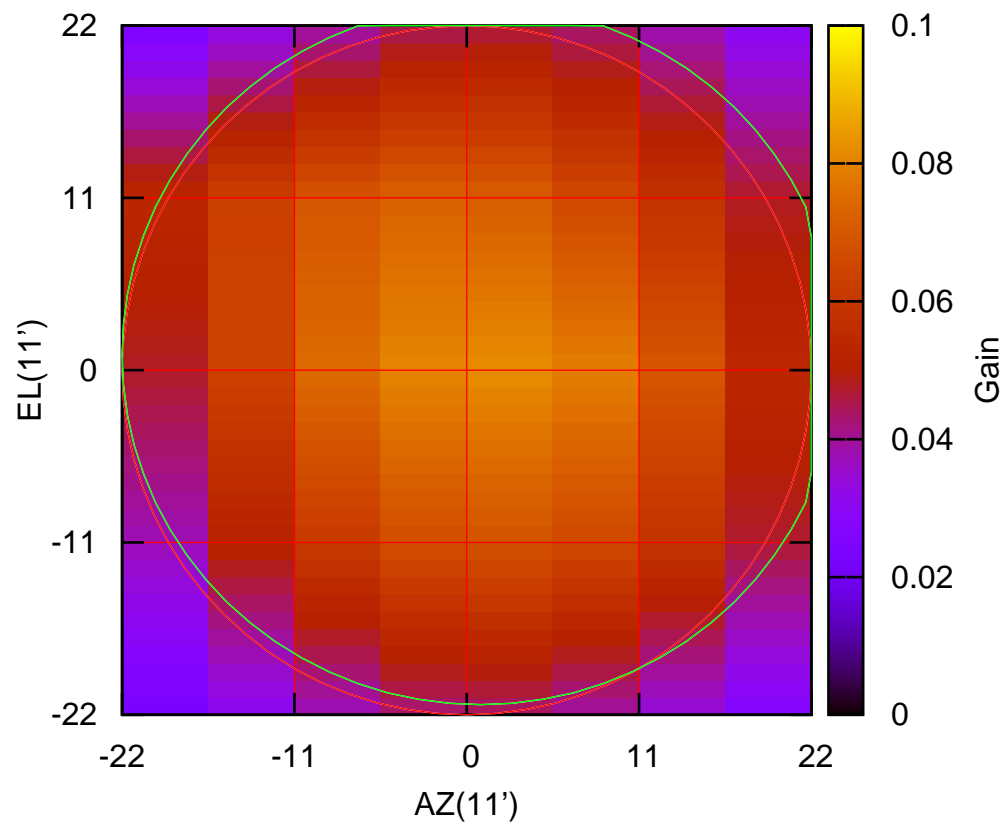
610 MHz.



S01-175 ELOFF= -3.1' ELBEAM= 43.1'

S02-130 AZOFF= 0.9' AZBEAM= 45.8'

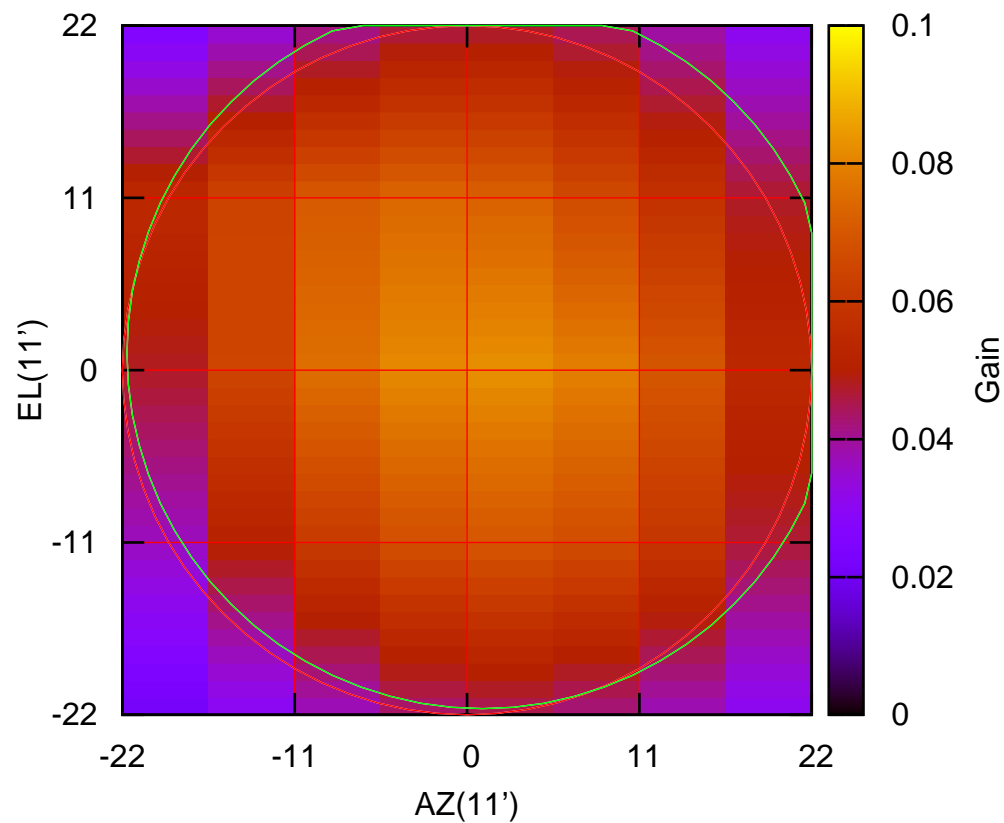
610 MHz.



S02-130 ELOFF= 1.0' ELBEAM= 44.7'

S02-175 AZOFF= 1.0' AZBEAM= 45.4'

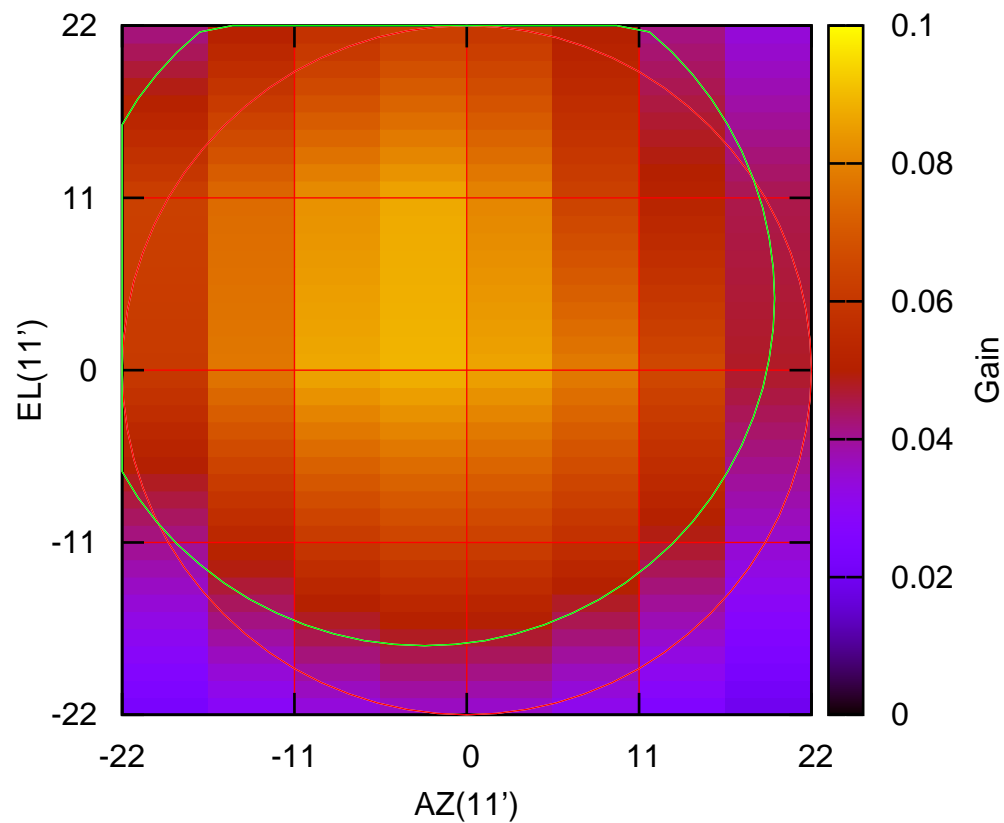
610 MHz.



S02-175 ELOFF= 1.1' ELBEAM= 45.4'

S03-130 AZOFF= -2.7' AZBEAM= 44.7'

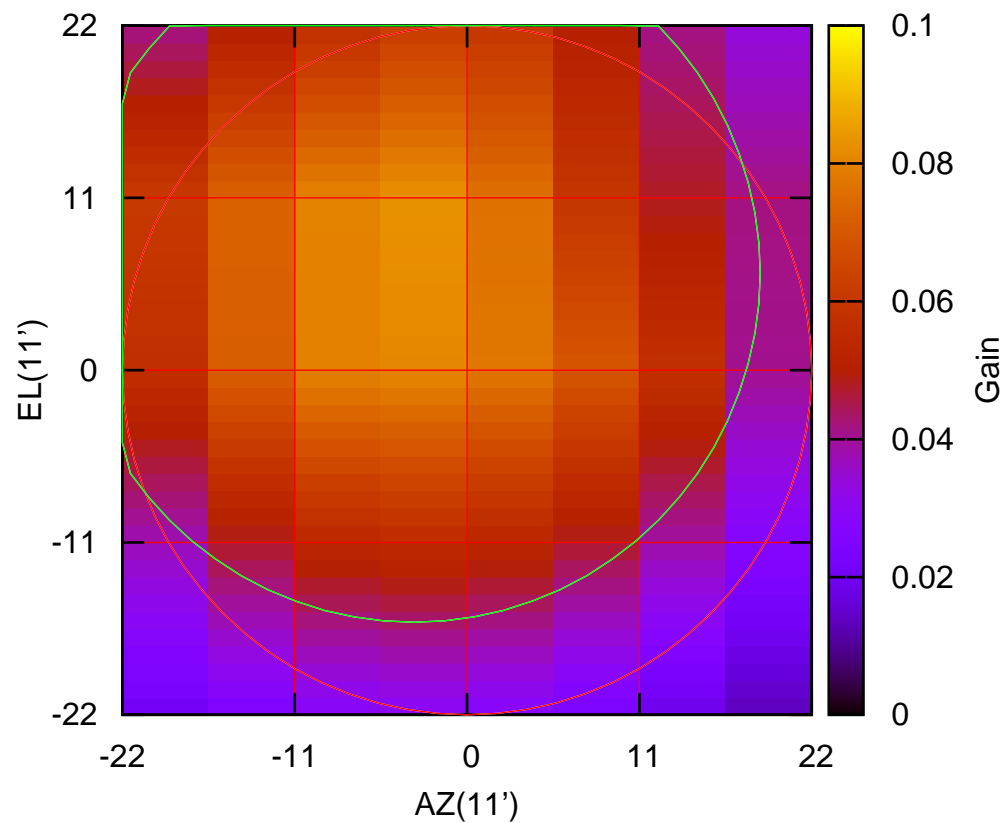
610 MHz.



S03-130 ELOFF= 4.6' ELBEAM= 44.4'

S03-175 AZOFF= -3.4' AZBEAM= 44.2'

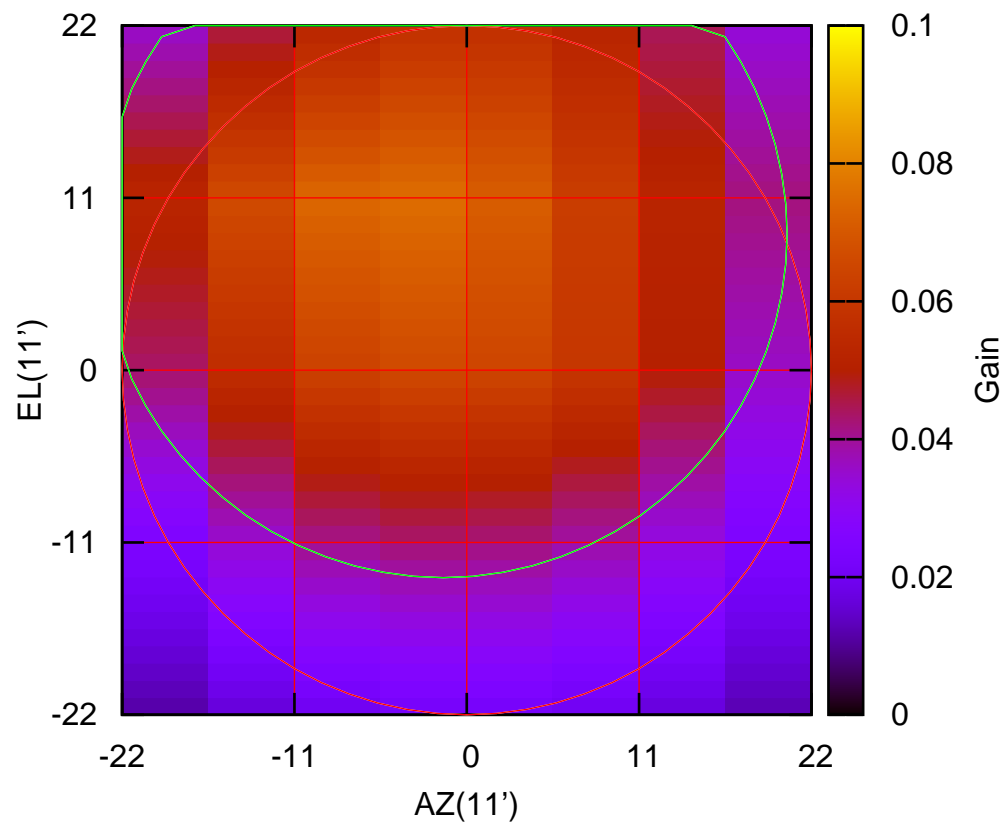
610 MHz.



S03-175 ELOFF= 6.2' ELBEAM= 44.6'

S04-130 AZOFF= -1.5' AZBEAM= 43.9'

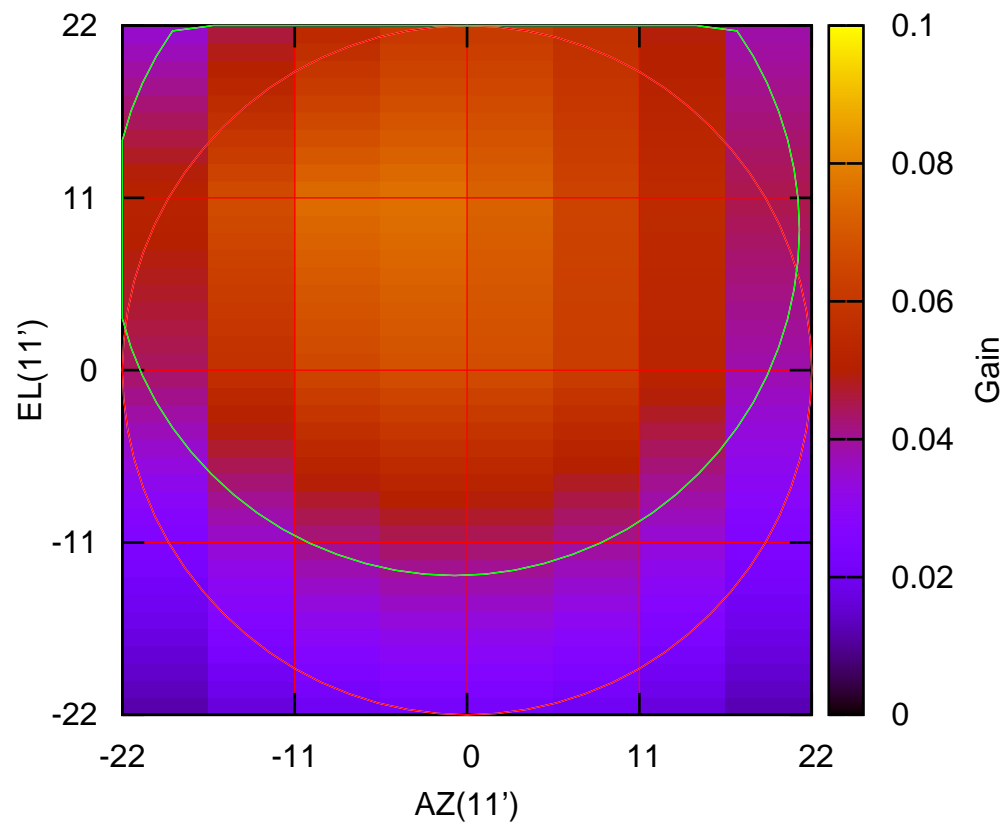
610 MHz.



S04-130 ELOFF= 8.7' ELBEAM= 43.9'

S04-175 AZOFF= -0.8' AZBEAM= 44.0'

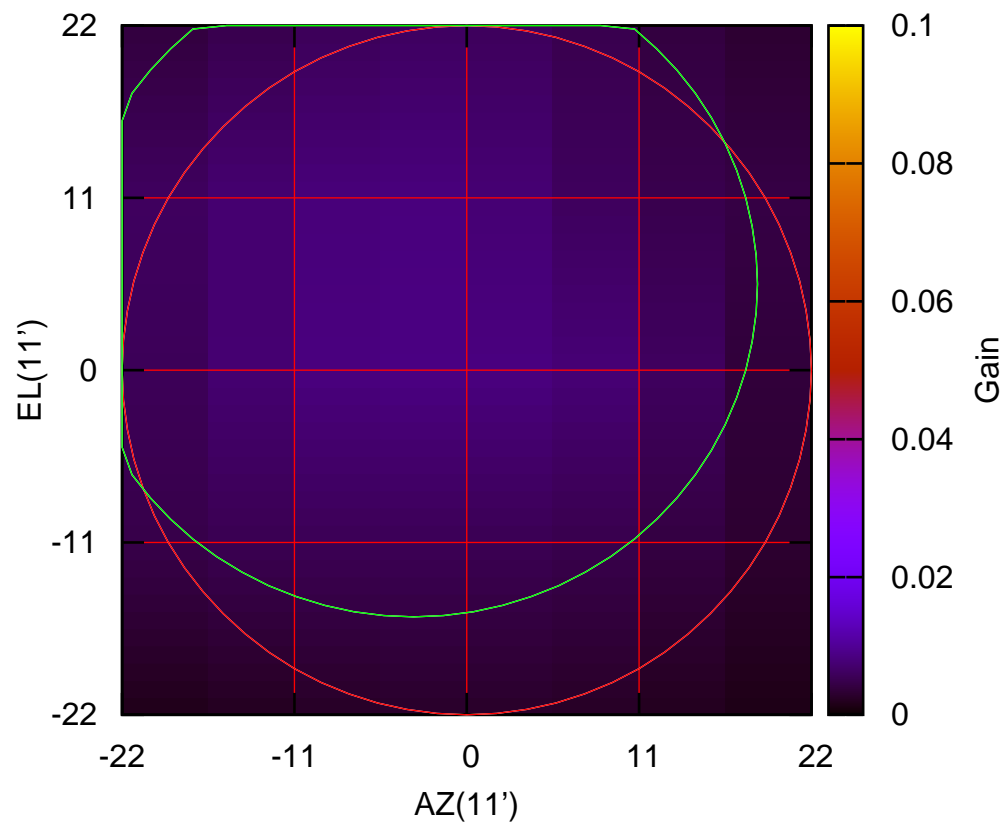
610 MHz.



S04-175 ELOFF= 9.0' ELBEAM= 44.2'

S06-130 AZOFF= -3.4' AZBEAM= 43.9'

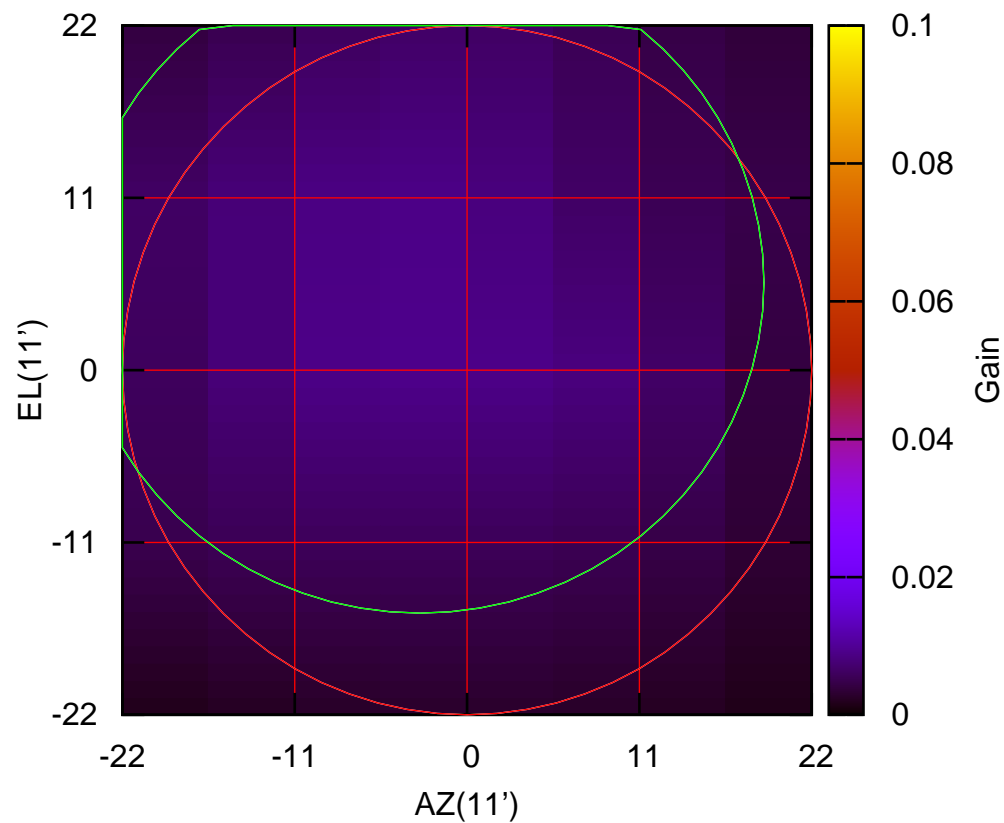
610 MHz.



S06-130 ELOFF= 5.5' ELBEAM= 42.5'

S06-175 AZOFF= -3.0' AZBEAM= 43.9'

610 MHz.



S06-175 ELOFF= 5.6' ELBEAM= 42.2'