

# Real-time Broadband RFI Excision for the Upgraded GMRT: Released Version

Ruta Kale, Kaushal D. Buch

GTAC User Document Version 8.0

April 23, 2026

## 1 Summary and Recommended Settings

The real-time RFI excision (filtering) system is released for the uGMRT users from GTAC Cycle-42. uGMRT band-3 and band-4 are released while band-2 continues to be in the shared-risk release mode. We do not recommend the usage of the filter in band-5. In this document, a summary of the released version of the real-time (online) broadband (BB) Radio Frequency Interference (RFI) filter for the Upgraded GMRT(uGMRT) users is provided. Users should note that when the real-time RFI filtering is chosen for GTAC observations, the unfiltered data cannot be recorded and thus the filtering once done is irreversible.

The currently recommended settings for the RFI filtering are  $4\sigma$  threshold with digital noise replacement for continuum observations and  $3\sigma$  threshold with digital noise replacement for pulsar observations. Also, the power equalization should be between 80-90 counts.

Please contact us at [onlinerfi@ncra.tifr.res.in](mailto:onlinerfi@ncra.tifr.res.in) well in advance to use the filter in GTAC observations or related queries. We request citing the paper referred to in the References section of this document for any publication resulting from uGMRT observations using the real-time RFI excision system.

Table 1: Broadband (BB) RFI filtering [1] for usage in GTAC observations. The first sector is for interferometric mode observations, and the second sector is for pulsar mode observations. “DNR” stands for Digital Noise Replacement.

Obs. Type	Band	Filter settings	Typical Fil. Frac.	Reference	Recommended Settings
Continuum	5	$3\sigma$ cutoff, DNR	$< 0.5\%$	Sec. 3	$4\sigma$ cutoff, DNR
Continuum	4	$3\sigma$ cutoff, DNR	$0.5 - 1.5\%$	Sec. 3	$4\sigma$ cutoff, DNR
Continuum	3	$3\sigma$ cutoff, DNR	$1 - 2\%$	Sec. 3	$4\sigma$ cutoff, DNR
Continuum	2	$3\sigma$ cutoff, DNR	$4 - 5\%$	Sec. 5	$4\sigma$ cutoff, DNR
Pulsar	3	$3\sigma$ cutoff, DNR		Sec. 4	$3\sigma$ cutoff, DNR

## 2 Broadband RFI Mitigation for the uGMRT: Method

The Median Absolute Deviation (MAD) is computed on Nyquist-sampled digitized time series for each polarization of each antenna using 16k samples. Further, a median of 16k such MAD values (median of MAD, MoM) is calculated. To meet the real-time requirements, these calculations are carried out on every fourth input sample arriving at a 1.25 ns sampling interval. Thus,  $(16384 \text{ samples} \times 16384 \text{ MAD values} \times 1.25 \times 10^{-9} \text{ seconds}) \times 4 = 1.34$  seconds worth of data goes into the real-time statistics for the RFI filtering

and is applied to the subsequent data. Values outside the threshold,  $\text{median} \pm n \times 1.4826 \times \text{MoM}$  are treated as RFI and can be replaced either by a constant value or digital noise ( $n = 3$ ,  $\sigma = 1.4826 \times \text{MoM}$ , Table 1). The typical percentage of samples that are affected by the filtering is also provided for the interferometric mode observations at bands 2, 3, 4 and 5.

An RFI counter can be enabled through the command file during the observation to keep a record of the number of detected RFI samples per antenna per polarization. The ratio of these counts to the total number of points provides the fraction of flagged samples during the observation. The observation settings generator <sup>1</sup> can be used by choosing the option of "RFI filter" to get the command file with additional commands for the counter. For the 100 and 200 MHz modes, the RFI counter is recorded every 671ms. There are scripts to average it and bring it to a coarser time resolution. For the 400MHz bandwidth mode, two options are provided for recording the counter: ON1 and ON2. In the case of the ON1 option, the RFI counter is recorded every 5 minutes. For the ON2 option, the RFI counter is recorded once for each scan duration.

### 3 Interferometric observations: Bands 3, 4 and 5

We have tested the online RFI filter with a  $3\sigma$  threshold and digital noise replacement (DNR) for bands 3, 4 and 5. The Indian polar mode and default continuum settings were used. The unfiltered signal from half the array was copied into the remaining half to obtain a simultaneous recording of filtered and unfiltered data (1:2 digital copy mode). At bands 3, 4 and 5 we found that any change in the recovery of calibrator flux densities was  $< 3\%$ . The flagging percentage is lower by 10 – 40% for central square antennas as compared to that in unfiltered data (see Fig. 1 for an example of a short baseline).

We carried out standard steps of flagging, calibration and imaging of the target source on simultaneous data with and without filtering using the CAPTURE pipeline<sup>2</sup>. The resulting images from filtered data have lower RMS value and better fidelity (Fig. 2).

### 4 Pulsar observations

We carried out pulsar observation for PSR B0329+54 in the incoherent array (IA) mode at band-3 (200 MHz bandwidth) to check the effect of RFI filtering on strong single pulses and averaged folded profiles. The observation was carried out with 14 antennas in the 1:2 digital copy mode and with RFI filtering at  $3\sigma$  threshold and replacement by digital noise. The setup used 4096 spectral channels and a time resolution of 327.68  $\mu\text{s}$ .

The de-dispersed time-series from a strong pulsar B0329+54 shows an improvement of signal-to-noise ratio (SNR) by a factor of 4 over the unfiltered version (Figs. 4 and 3). The SNR of unfiltered is 60 which increases to 240 after filtering. The strong single pulse from PSR B0329+54 are not clipped during filtering (Figs. 5 and 6).

### 5 Interferometric observations: Band 2

At band 2 the data in the frequency range 0.19 - 0.24 GHz were analysed to avoid the regions in the spectrum that were affected by the notch filter and dominant narrow band RFI. The calibrated data towards the primary calibrator are shown in Fig. 7. The trend of reduced standard deviation in the data at short baselines is seen at band 2. However, there are long baselines that show an increase in the standard deviation after filtering. This issue is being investigated.

<sup>1</sup><http://www.ncra.tifr.res.in/~secr-ops/cmd1.7/cmd.html>

<sup>2</sup>CASA Pipeline-cum-Toolkit for uGMRT Data Reduction, <https://github.com/ruta-k/uGMRT-pipeline>

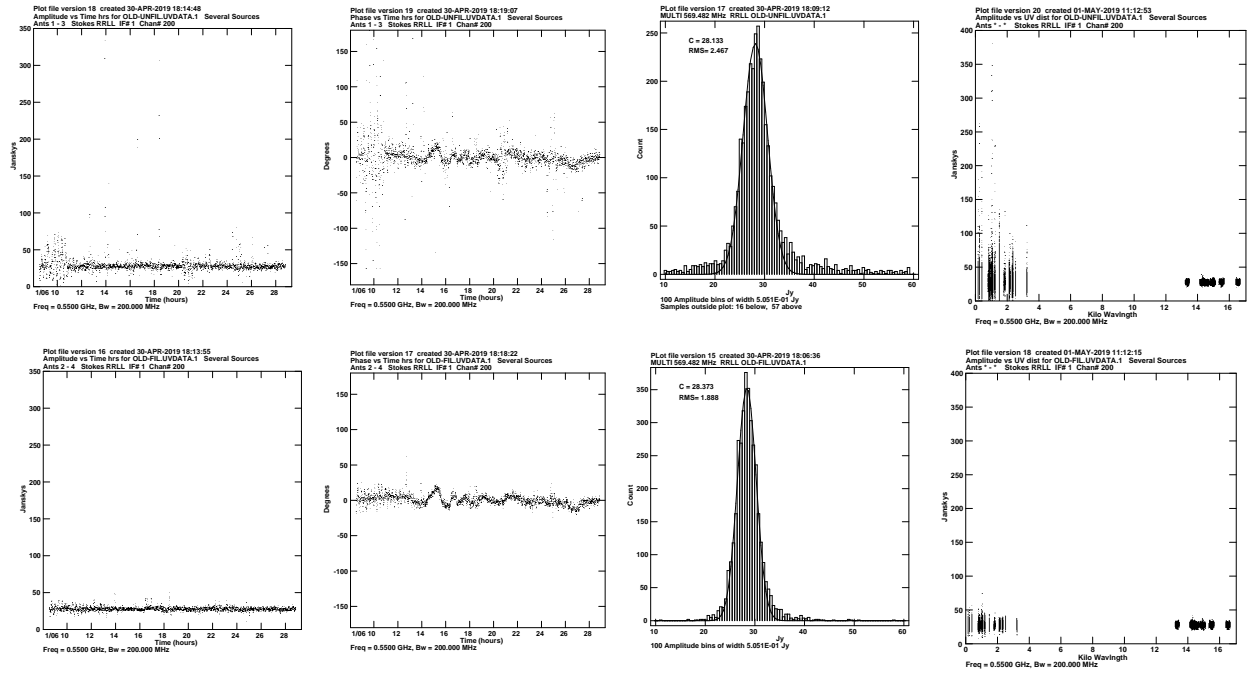


Figure 1: Top panels are for unfiltered data and bottom panels are the corresponding filtered data (Band 4, 14 June 2018). The calibrated data on baseline C00-C02 in unfiltered data (top) and the filtered copy C01-C03 (bottom) for channel 200 (0.550 GHz). The panels from left to right show Amplitude Vs time, Phase Vs Time, a histogram of amplitudes and Amplitude Vs uv-distance. The improvement by the online RFI filter is mainly at short baselines.

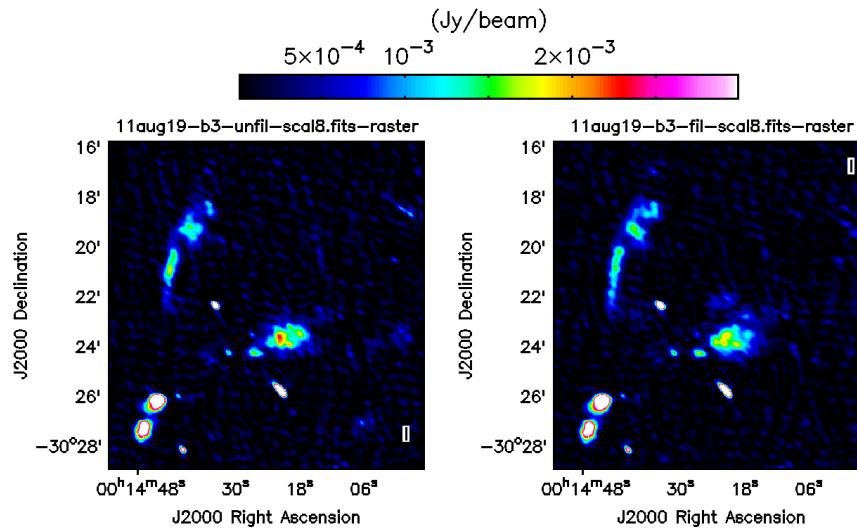


Figure 2: Band 3 images of A2744 field: unfiltered (left) and filtered (right). The rms in the unfiltered image is  $115 \mu\text{Jy beam}^{-1}$  and in the filtered image is  $107 \mu\text{Jy beam}^{-1}$ . The beam size is  $17.9'' \times 10.6''$  with a position angle  $53^\circ$ .

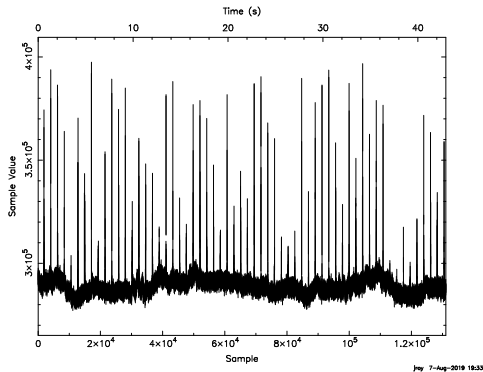


Figure 3: Unfiltered de-dispersed time-series from a strong pulsar B0329+54 : observation carried out in the digital copy (1:2) mode

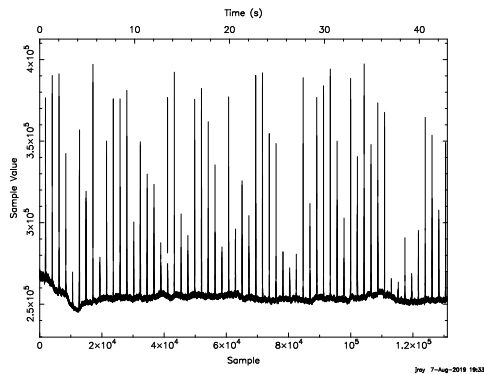


Figure 4: Filtered de-dispersed time-series from a strong pulsar B0329+54 : observation carried out in the digital copy (1:2) mode. SNR improvement by a factor of 4.

## 6 Current Usage Statistics for Real-time RFI Filtering

Real-time RFI filtering usage in the recent observing cycle (GTAC-48) is summarized in Table 2. The usage consists of continuum and pulsar observations.

Table 2: Real-time RFI filtering usage during GTAC observations in Cycle 48 (April 17, 2025-September 29, 2025) for uGMRT Band-2 (120-240 MHz), Band-3 (250-500 MHz), Band-4 (550-850 MHz), and Band-5 (1000-1450 MHz). The table shows approximate RFI filtering usage (in hours)

uGMRT Band	Filtering (Hrs.)
2	9
3	255
4	300
5	66
Total	630

## Acknowledgements

The authors would like to thank the GMRT Backend, Operations, and Control Room staff members for their help with the development, testing, and release of the online RFI filtering system. In particular, we would like to thank all the past team members who worked towards the development and testing of this system. We would like to thank Jayanta Roy and Bhaswati Bhattacharyya for the planning, observational support and data analysis for the pulsar observations described in this report. We would like to thank Divya Oberoi for the discussions on this topic and for his suggestions.

## References

- [1] K. D. Buch, K. Naik, S. Nalawade, S. Bhatporia, Y. Gupta, and B. Ajithkumar, “Real-time implementation of MAD-based RFI Excision on FPGA,” *Journal of Astronomical Instrumentation*, vol. 8, 2019.

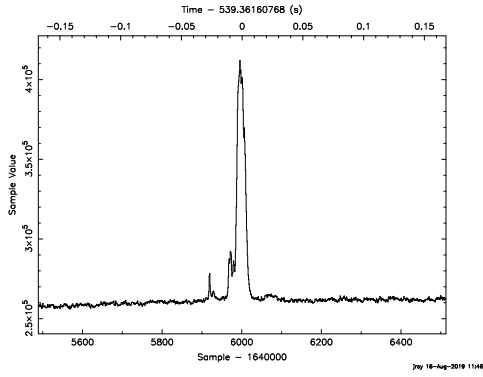


Figure 5: Single pulse (unfiltered) from a strong pulsar B0329+54

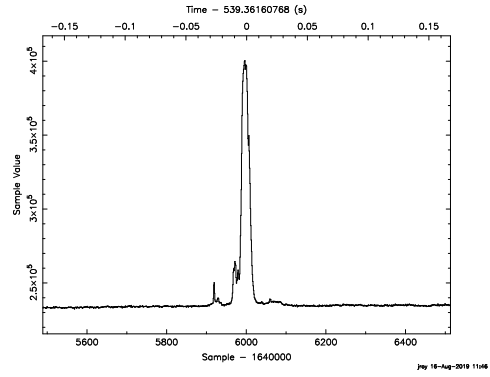


Figure 6: Single pulse (filtered) from a strong pulsar B0329+54

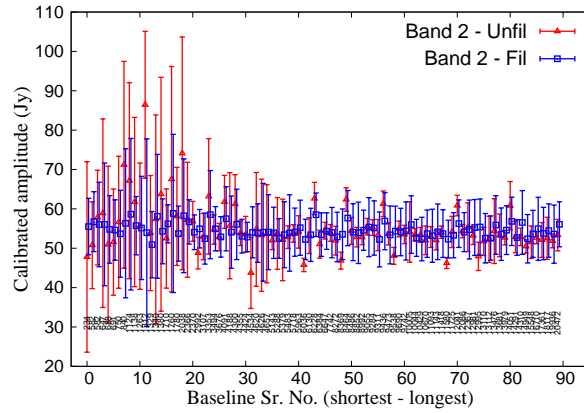


Figure 7: The band 2 calibrated flux density of a primary calibrator source for a single channel is plotted as a function of baseline numbers sorted according to their lengths. The integers in the plot indicate the length of the baseline in metres (234 - 20472 m). The unfiltered (red) and filtered (blue) points are offset on the x-axis for comparison.